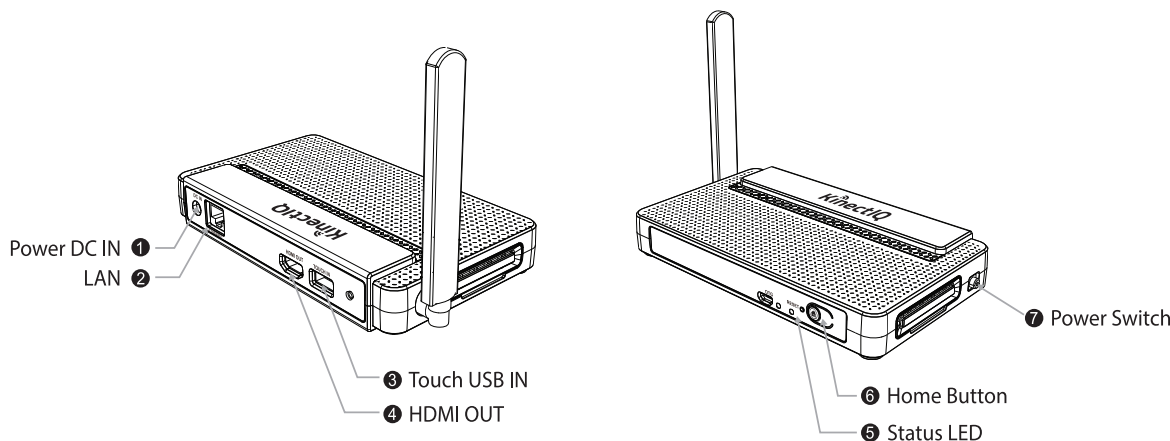


I3 SYNC TOUCH 3.0 RX Manual

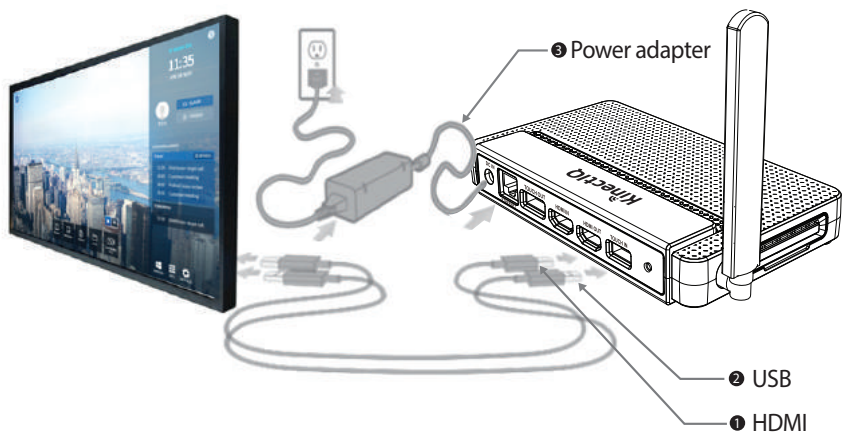


- ① Power DC : Insert Power Supply
- ② LAN Port : Connect Ethernet cable
- ③ HDMI OUT : Connect to display device
- ④ Touch USB IN Port : Connect to a touch display

- ⑤ Status LED
- ⑥ Home button : Return to Home screen
- ⑦ Power Switch : Turn Receiver ON/OFF

Installation

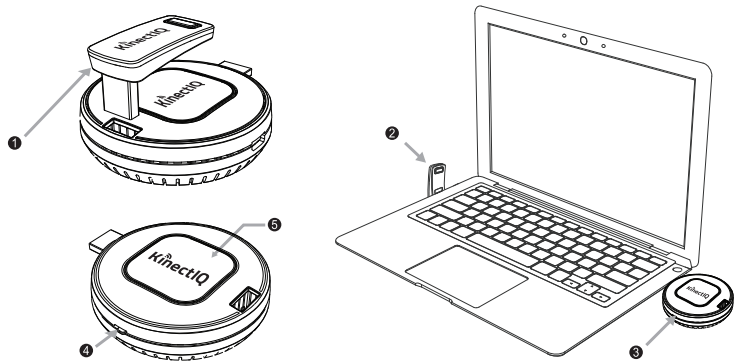
Step 1. Install Receiver



- ① Connect HDMI cable from touch display to the HDMI OUT port of the KinectIQ PRO Receiver.
- ② Connect USB cable from touch display to the Touch IN USB port of the Receiver.
- ③ Connect the Power Supply provided to the Power In port of the Receiver.
- ④ Turn Power Switch On.

Installation

Step 2. Install Transmitter



- ① Remove Touch USB Dongle from KinectIQ PRO Transmitter.
- ② Insert Touch USB Dongle into the USB IN port of your laptop or PC.
- ③ Plug KinectIQ PRO Transmitter in to the HDMI out port of laptop or PC. Use the HDMI extension cable provided if needed.
- ④ Slide the power switch to the left to turn power ON and the Status LED will light blue.
- ⑤ Click Transmit button and an image will appear on the display device of which the Receiver is installed.

• If multiple Transmitters are connected, the corresponding screen of the Transmitter that has just been clicked will appear, as part of the product's integrated switching function.

Pairing Receiver and Transmitters

1. Initial pairing



Pair the transmitter with the Receiver by entering Set Mode in the Settings.



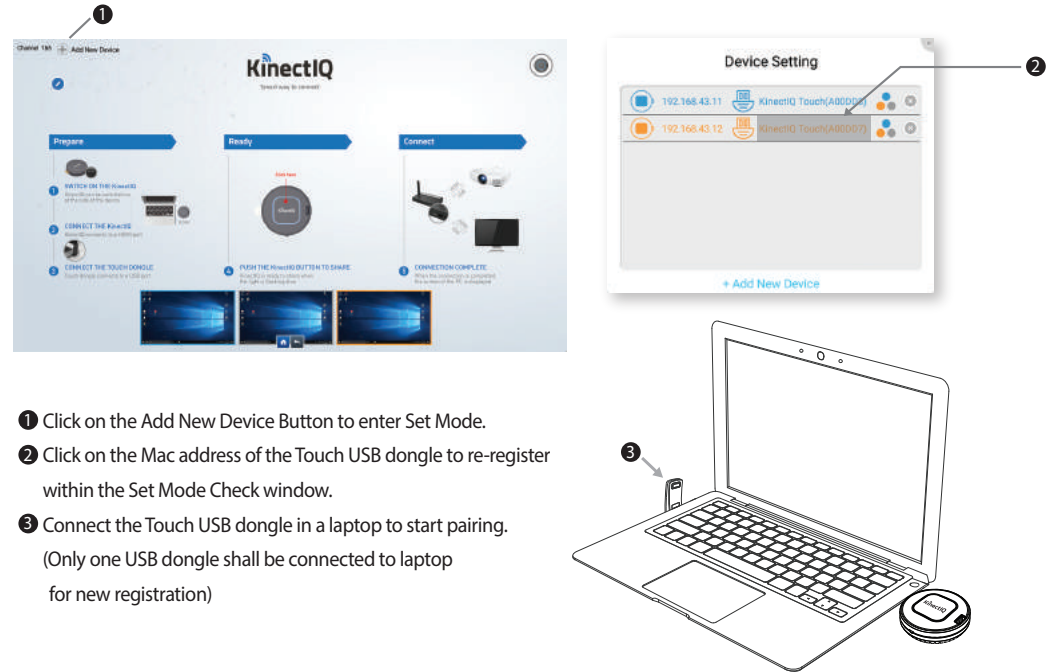
Pairing Receiver and Transmitters

2. Add/Remove Paired Transmitters

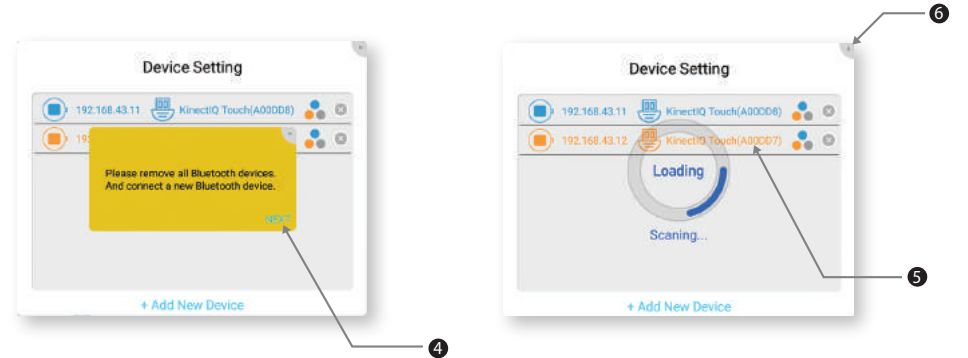


Pairing Receiver and Transmitters

3. Pair additional USB dongle



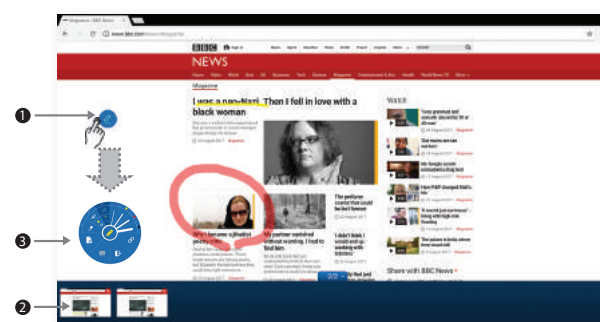
Pairing Receiver and Transmitters



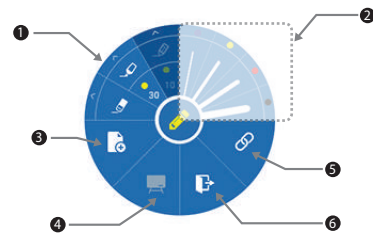
Notice

The distance available for wireless application may vary depending on the user environment.
The wireless device in use may be subjected to radio interference during operation.
The screen in part may not show if the aspect ratio of image being replayed does not match with that of the monitor.
Turn power OFF of the product and of the Transmitter when not in use.

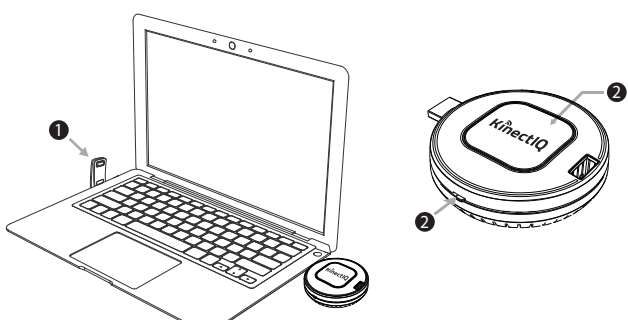
Overlay Annotation



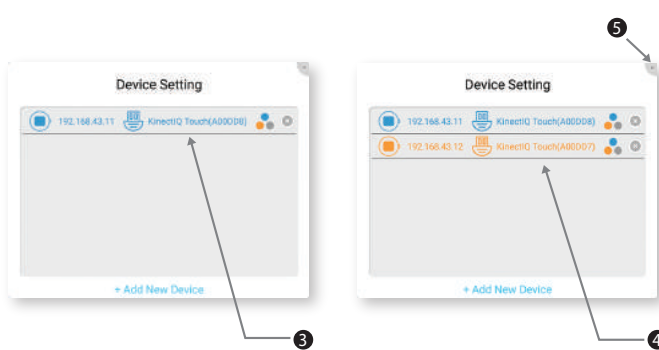
③ Overlay Annotation Tool -Tool Layout



Pairing Receiver and Transmitters

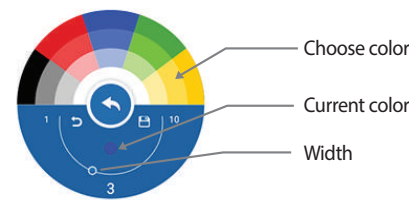


- ① Connect the Touch USB dongle to the USB port of laptop or PC.
- ② Press and hold the Transmit Button while switching the power switch to ON. Keep holding the Transmit Button for ~10 seconds until status LED starts flashing blue.

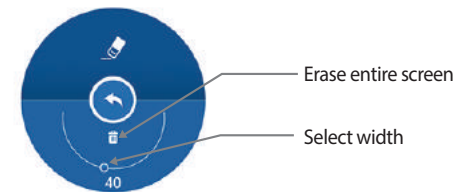


Overlay Annotation

- Pen Setting : ① Click ② Select pen color, width



- Eraser : ① Click



- Share : ⑤ Share via E-mail, QR-code Scan, Cloud



Notice

The distance available for wireless application may vary depending on the user environment.
The wireless device in use may be subjected to radio interference during operation.
The screen in part may not show if the aspect ratio of image being replayed does not match with that of the monitor.
Turn power OFF of the product and of the Transmitter when not in use.

Notice

The distance available for wireless application may vary depending on the user environment.

The wireless device in use may be subjected to radio interference during operation.

The screen in part may not show if the aspect ratio of image being replayed does not match with that of the monitor.

Turn power OFF of the product and of the Transmitter when not in use.

RF spec.

**I3 SYNC TOUCH.30 RX : 5180 – 5220 MHz, 5745 – 5825 MHz
2402 – 2480 MHz**

Hardware version

- I3 SYNC TOUCH.30 RX : 0.7

Software version

- I3 SYNC TOUCH.30 RX : 1.1.6

Operating Temperature

- I3 SYNC TOUCH.30 RX : 0 -40 Degree C

Power supply

- I3 SYNC TOUCH.30 RX : 5.0 Vd.c.

- This device complies with Industry Canada license-exempt RSS standard(s). Operation is subject to the following two conditions:

(1) this device may not cause interference, and

(2) this device must accept any interference, including interference that may cause undesired operation of the device.

- Le présent appareil est conforme aux CNR d'Industrie Canada applicables aux appareils radio exempts de licence. L'exploitation est autorisée aux deux conditions suivantes :

(1) l'appareil ne doit pas produire de brouillage, et

(2) l'utilisateur de l'appareil doit accepter tout brouillage radio électrique subi, même si le brouillage est susceptible d'en compromettre le fonctionnement.

- This equipment should be installed and operated with minimum 20 cm between the radiator and your body.

- Cet appareil doit être installé et utilisé avec un minimum de 20 cm entre le radiateur et votre corps.

- This device is restricted to indoor use only within the 5.15 ~ 5.25GHz Band.

- Cet appareil est restreint à l'utilisation à l'intérieur seulement dans la bande 5.15 ~ 5.25GHz.

FCC Caution

Class B Digital Device

Note : This equipment has been tested and found to comply with the limits for a Class B digital device, pursuant to part 15 of the FCC Rules. These limits are designed to provide reasonable protection against harmful interference in a residential installation. This equipment generates, uses and can radiate radio frequency energy and, if not installed and used in accordance with the instructions, may cause harmful interference to radio communications. However, there is no guarantee that interference will not occur in a particular installation. If this equipment does cause harmful interference to radio or television reception, which can be determined by turning the equipment off and on, the user is encouraged to try to correct the interference by one or more of the following measures:

- Reorient or relocate the receiving antenna.

- Increase the separation between the equipment and receiver.

- Connect the equipment into an outlet on a circuit different from that to which the receiver is connected.

- Consult the dealer or an experienced radio/TV technician for help.

Any changes or modifications in construction of this device which are not expressly approved by the party responsible for compliance could void the user's authority to operate the equipment.

Part 15C

This device complies with part 15 of the FCC Rules. Operation is subject to the following two conditions: (1) This device may not cause harmful interference, and (2) this device must accept any interference received. Including interference that may cause undesired operation.