

**12.2. System Check Plots**

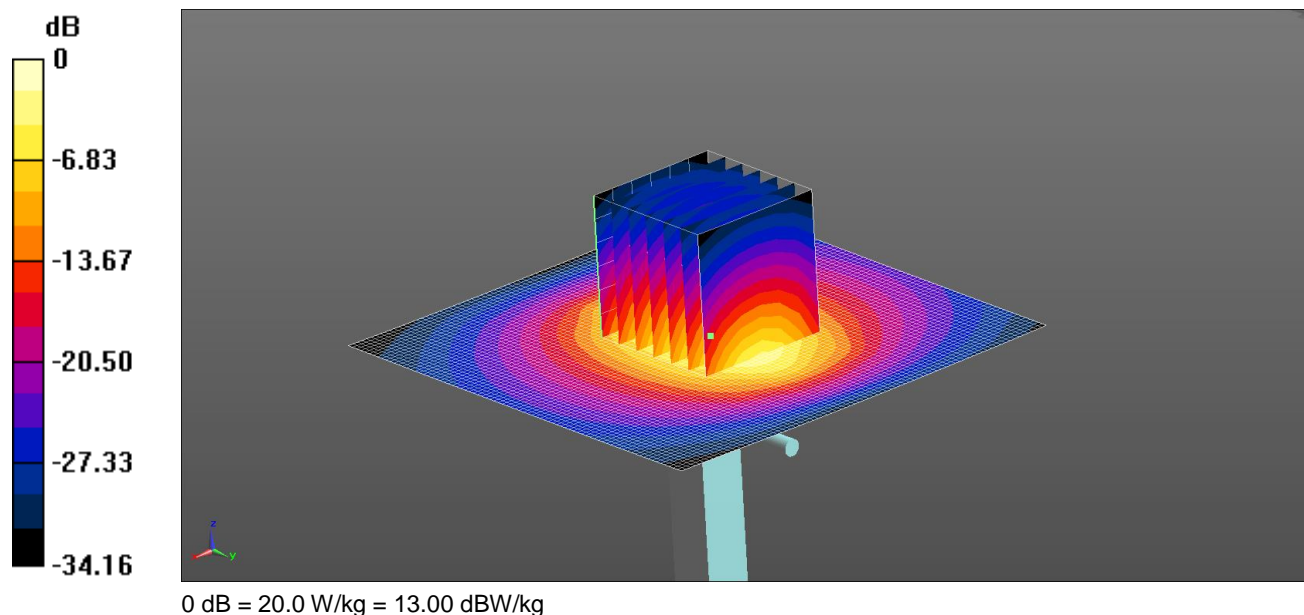
This appendix contains the following system validation distribution scans.

Scan Reference Number	Title
SYS/001	System Performance Check 2450MHz Body 03 04 2017

SYS/001: System Performance Check 2450MHz Body 03 04 2017

Date: 03/04/2017

DUT: Dipole 2450 MHz; SN725; Type: D2450V2; Serial: D2450V2 - SN:725



Communication System: UID 0, CW (0); Frequency: 2450 MHz; Duty Cycle: 1:1

Medium: 2450 MHz MSL Medium parameters used:  $f = 2450$  MHz;  $\sigma = 2.011$  S/m;  $\epsilon_r = 52.159$ ;  $\rho = 1000$  kg/m<sup>3</sup>

Phantom section: Flat Section

DASY4 Configuration:

- Probe: EX3DV4 - SN3814; ConvF(7.19, 7.19, 7.19); Calibrated: 30/09/2016;
- Sensor-Surface: 2mm (Mechanical Surface Detection)
- Electronics: DAE4 Sn450; Calibrated: 23/09/2016
- Phantom: ELI v5.0; Type: QDOVA002AA; Serial: TP:xxxx
- ; SEMCAD X Version 14.6.10 (7372)

**Configuration/d=10mm, Pin=250mW/Area Scan (81x81x1):** Interpolated grid: dx=1.200 mm, dy=1.200 mm

Maximum value of SAR (interpolated) = 20.0 W/kg

**Configuration/d=10mm, Pin=250mW/Zoom Scan (7x7x7) (7x7x7)/Cube 0:** Measurement grid: dx=5mm, dy=5mm, dz=5mm

Reference Value = 84.09 V/m; Power Drift = 0.05 dB

Peak SAR (extrapolated) = 27.6 W/kg

**SAR(1 g) = 12.9 W/kg; SAR(10 g) = 5.83 W/kg**

Maximum value of SAR (measured) = 20.2 W/kg

### **12.3. SAR Distribution Plots**

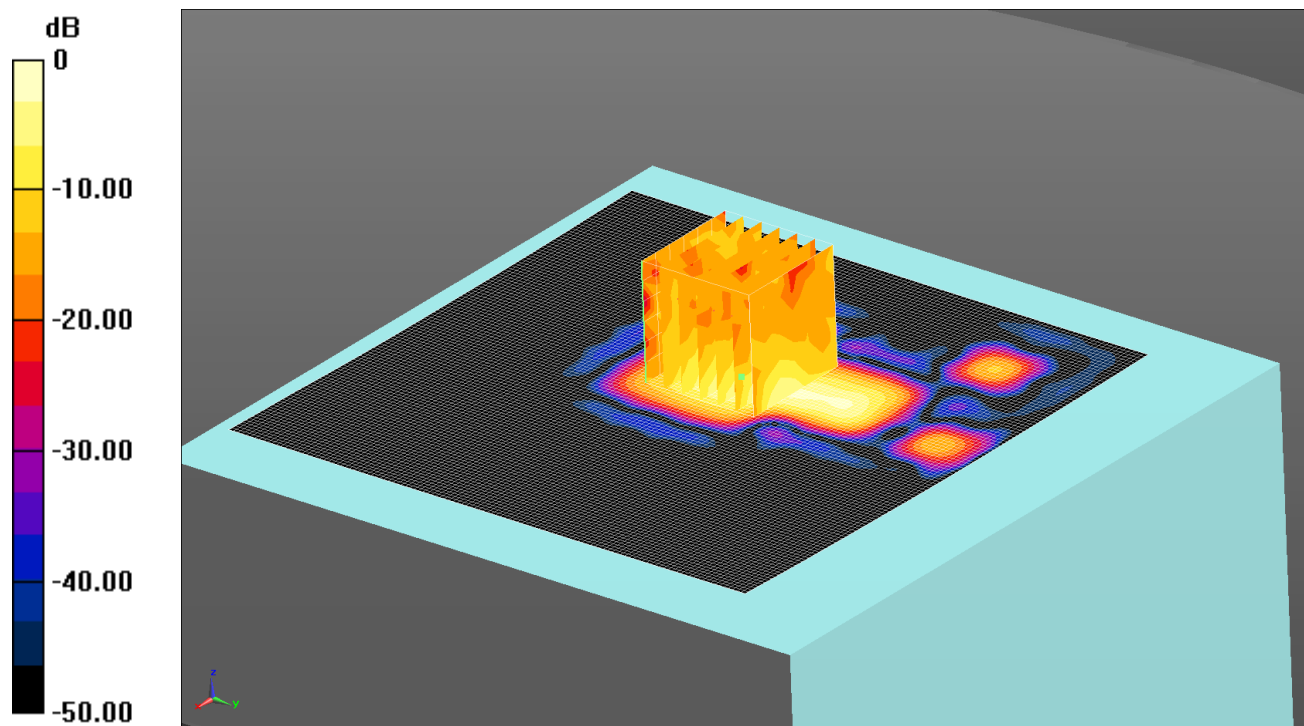
This appendix contains the following SAR distribution scans.

<b>Scan Reference Number</b>	<b>Title</b>
SAR/001	Position 1 0mm WLAN 2.4GHz 802.11g 6Mbps CH1
SAR/002	Position 2 0mm WLAN 2.4GHz 802.11g 6Mbps CH1
SAR/003	Position 3 0mm WLAN 2.4GHz 802.11g 6Mbps CH1
SAR/004	Position 4 0mm WLAN 2.4GHz 802.11g 6Mbps CH1
SAR/005	Position 3 0mm WLAN 2.4GHz 802.11g 6Mbps CH6
SAR/006	Position 3 0mm WLAN 2.4GHz 802.11g 6Mbps CH11

SAR/001: Position 1 0mm WLAN 2.4GHz 802.11g 6Mbps CH1

Date: 03/04/2017

DUT: Braster; Type: Braster; Serial: BRA-0030D5



0 dB = 0.0326 W/kg = -14.86 dBW/kg

Communication System: UID 0, WLAN 802.11 (0); Frequency: 2412 MHz; Duty Cycle: 1:1

Medium: 2450 MHz MSL Medium parameters used (interpolated):  $f = 2412$  MHz;  $\sigma = 1.967$  S/m;  $\epsilon_r = 52.265$ ;  $\rho = 1000$  kg/m<sup>3</sup>

Phantom section: Flat Section

DASY4 Configuration:

- Probe: EX3DV4 - SN3814; ConvF(7.19, 7.19, 7.19); Calibrated: 30/09/2016;
- Sensor-Surface: 2mm (Mechanical Surface Detection)
- Electronics: DAE4 Sn450; Calibrated: 23/09/2016
- Phantom: ELI v5.0; Type: QDOVA002AA; Serial: TP:xxxx
- ; SEMCAD X Version 14.6.10 (7372)

**Configuration/Position 1/Area Scan 2 (121x121x1):** Interpolated grid:  $dx=1.200$  mm,  $dy=1.200$  mm

Maximum value of SAR (interpolated) = 0.0326 W/kg

**Configuration/Position 1/Zoom Scan (7x7x7) (7x7x7)/Cube 0:** Measurement grid:  $dx=5$ mm,  $dy=5$ mm,  $dz=5$ mm

Reference Value = 2.230 V/m; Power Drift = 1.71 dB

Peak SAR (extrapolated) = 0.0430 W/kg

**SAR(1 g) = 0.017 W/kg; SAR(10 g) = 0.00539 W/kg**

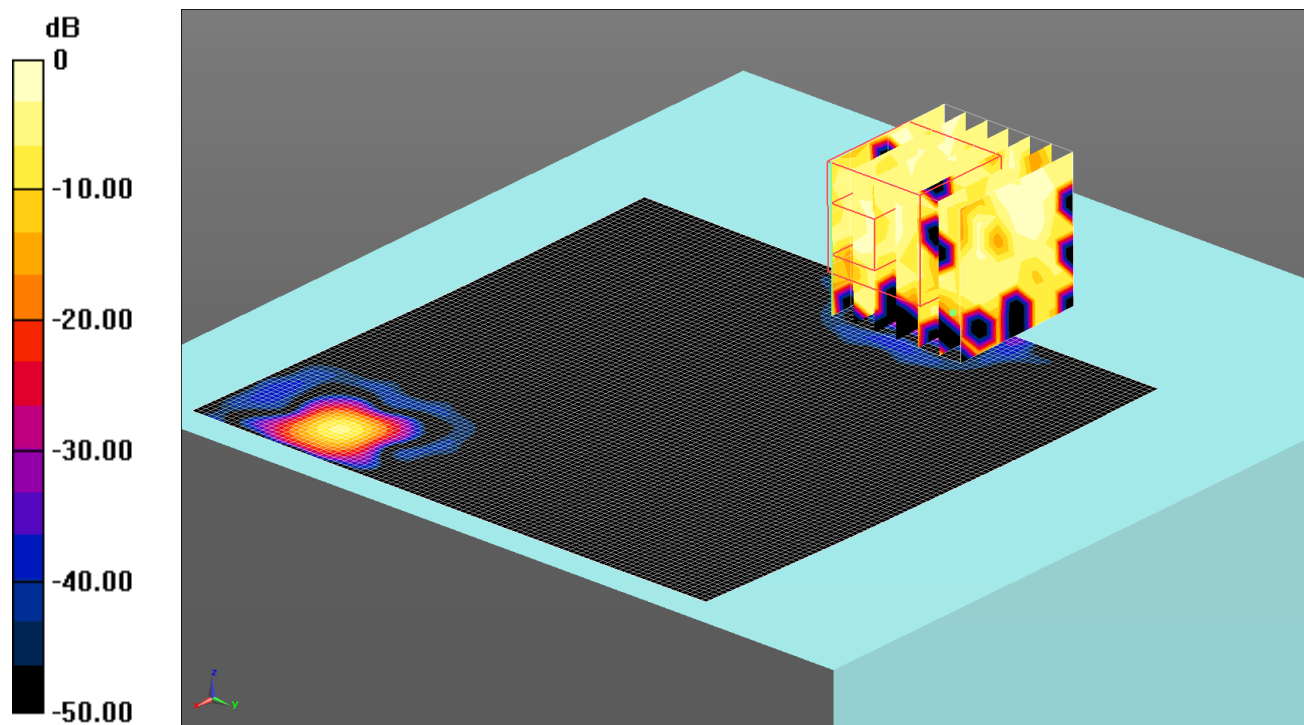
Maximum value of SAR (measured) = 0.0318 W/kg

Note: SAR level measured is very low as equivalent to noise floor

SAR/002: Position 2 0mm WLAN 2.4GHz 802.11g 6Mbps CH1

Date: 03/04/2017

DUT: Braster; Type: Braster; Serial: BRA-0030D5



0 dB = 0.00135 W/kg = -28.71 dBW/kg

Communication System: UID 0, WLAN 802.11 (0); Frequency: 2412 MHz; Duty Cycle: 1:1

Medium: 2450 MHz MSL Medium parameters used (interpolated):  $f = 2412$  MHz;  $\sigma = 1.967$  S/m;  $\epsilon_r = 52.265$ ;  $\rho = 1000$  kg/m<sup>3</sup>

Phantom section: Flat Section

DASY4 Configuration:

- Probe: EX3DV4 - SN3814; ConvF(7.19, 7.19, 7.19); Calibrated: 30/09/2016;
- Sensor-Surface: 2mm (Mechanical Surface Detection)
- Electronics: DAE4 Sn450; Calibrated: 23/09/2016
- Phantom: ELI v5.0; Type: QDOVA002AA; Serial: TP:xxxx
- ; SEMCAD X Version 14.6.10 (7372)

**Configuration/Position 2/Area Scan 2 (101x101x1):** Interpolated grid: dx=1.200 mm, dy=1.200 mm

Maximum value of SAR (interpolated) = 0.00135 W/kg

**Configuration/Position 2/Zoom Scan (7x7x7) (7x7x7)/Cube 0:** Measurement grid: dx=5mm, dy=5mm, dz=5mm

Reference Value = 0.1550 V/m; Power Drift = 13.18 dB

Peak SAR (extrapolated) = 0.00297 W/kg

**SAR(1 g) = 0.000127 W/kg; SAR(10 g) = 3.19e-005 W/kg**

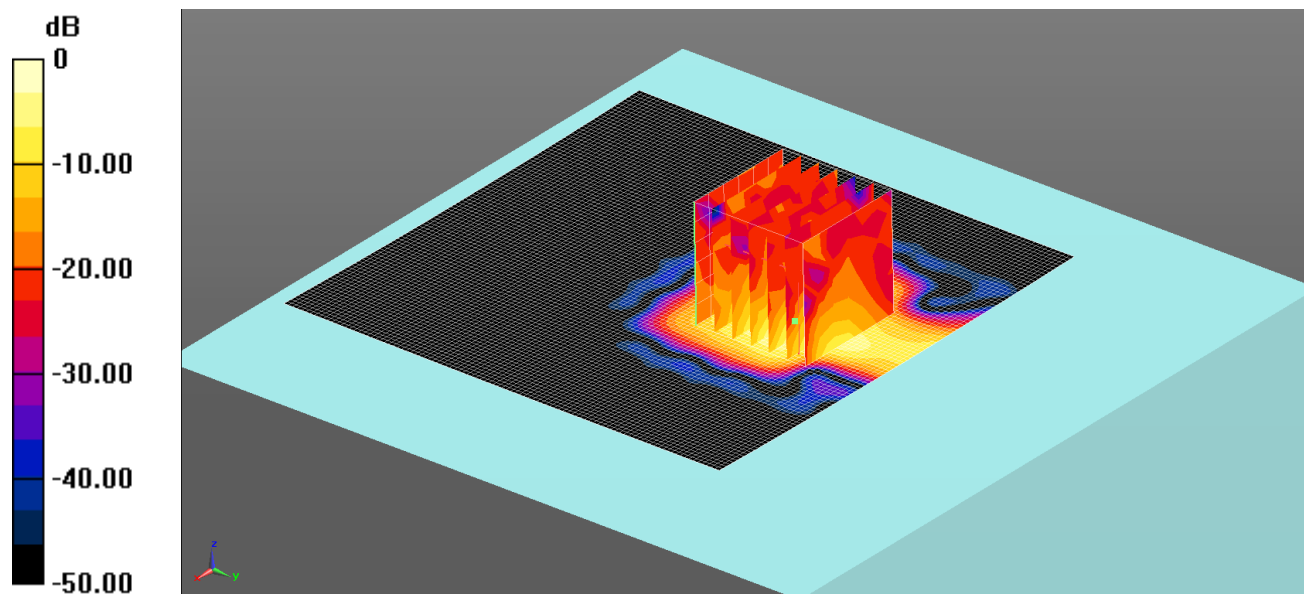
Maximum value of SAR (measured) = 0.00255 W/kg

Note: SAR level measured is very low as equivalent to noise floor

SAR/003: Position 3 0mm WLAN 2.4GHz 802.11g 6Mbps CH1

Date: 03/04/2017

DUT: Braster; Type: Braster; Serial: BRA-0030D5



0 dB = 0.0343 W/kg = -14.65 dBW/kg

Communication System: UID 0, WLAN 802.11 (0); Frequency: 2412 MHz; Duty Cycle: 1:1

Medium: 2450 MHz MSL Medium parameters used (interpolated):  $f = 2412$  MHz;  $\sigma = 1.967$  S/m;  $\epsilon_r = 52.265$ ;  $\rho = 1000$  kg/m<sup>3</sup>

Phantom section: Flat Section

DASY4 Configuration:

- Probe: EX3DV4 - SN3814; ConvF(7.19, 7.19, 7.19); Calibrated: 30/09/2016;
- Sensor-Surface: 2mm (Mechanical Surface Detection)
- Electronics: DAE4 Sn450; Calibrated: 23/09/2016
- Phantom: ELI v5.0; Type: QDOVA002AA; Serial: TP:xxxx
- ; SEMCAD X Version 14.6.10 (7372)

**Configuration/Position 1/Area Scan 2 (101x101x1):** Interpolated grid: dx=1.200 mm, dy=1.200 mm

Maximum value of SAR (interpolated) = 0.0343 W/kg

**Configuration/Position 1/Zoom Scan (7x7x7) (7x7x7)/Cube 0:** Measurement grid: dx=5mm, dy=5mm, dz=5mm

Reference Value = 1.731 V/m; Power Drift = 1.60 dB

Peak SAR (extrapolated) = 0.0410 W/kg

**SAR(1 g) = 0.019 W/kg; SAR(10 g) = 0.00599 W/kg**

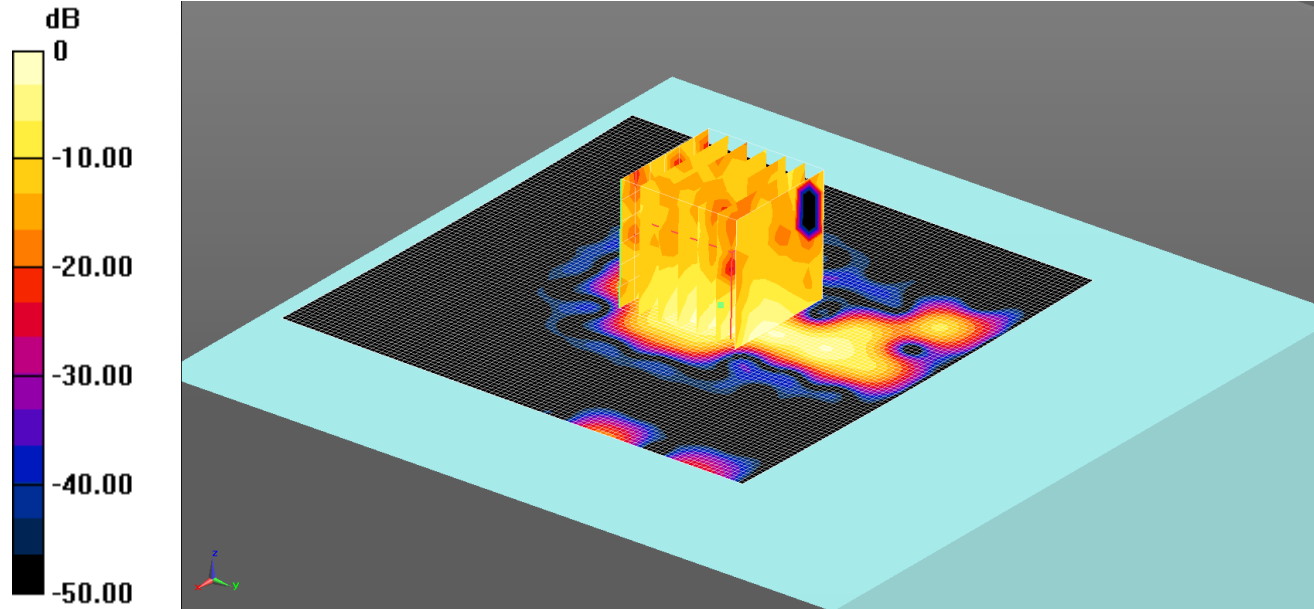
Maximum value of SAR (measured) = 0.0345 W/kg

Note: SAR level measured is very low as equivalent to noise floor

SAR/004: Position 4 0mm WLAN 2.4GHz 802.11g 6Mbps CH1

Date: 03/04/2017

DUT: Braster; Type: Braster; Serial: BRA-0030D5



0 dB = 0.0281 W/kg = -15.51 dBW/kg

Communication System: UID 0, WLAN 802.11 (0); Frequency: 2412 MHz; Duty Cycle: 1:1

Medium: 2450 MHz MSL Medium parameters used (interpolated):  $f = 2412$  MHz;  $\sigma = 1.967$  S/m;  $\epsilon_r = 52.265$ ;  $\rho = 1000$  kg/m<sup>3</sup>

Phantom section: Flat Section

DASY4 Configuration:

- Probe: EX3DV4 - SN3814; ConvF(7.19, 7.19, 7.19); Calibrated: 30/09/2016;
- Sensor-Surface: 2mm (Mechanical Surface Detection)
- Electronics: DAE4 Sn450; Calibrated: 23/09/2016
- Phantom: ELI v5.0; Type: QDOVA002AA; Serial: TP:xxxx
- ; SEMCAD X Version 14.6.10 (7372)

**Configuration/Position 4/Area Scan 2 (101x101x1):** Interpolated grid:  $dx=1.200$  mm,  $dy=1.200$  mm

Maximum value of SAR (interpolated) = 0.0281 W/kg

**Configuration/Position 4/Zoom Scan (7x7x7) (7x7x7)/Cube 0:** Measurement grid:  $dx=5$ mm,  $dy=5$ mm,  $dz=5$ mm

Reference Value = 2.716 V/m; Power Drift = -0.81 dB

Peak SAR (extrapolated) = 0.0240 W/kg

**SAR(1 g) = 0.011 W/kg; SAR(10 g) = 0.00375 W/kg**

Maximum value of SAR (measured) = 0.0177 W/kg

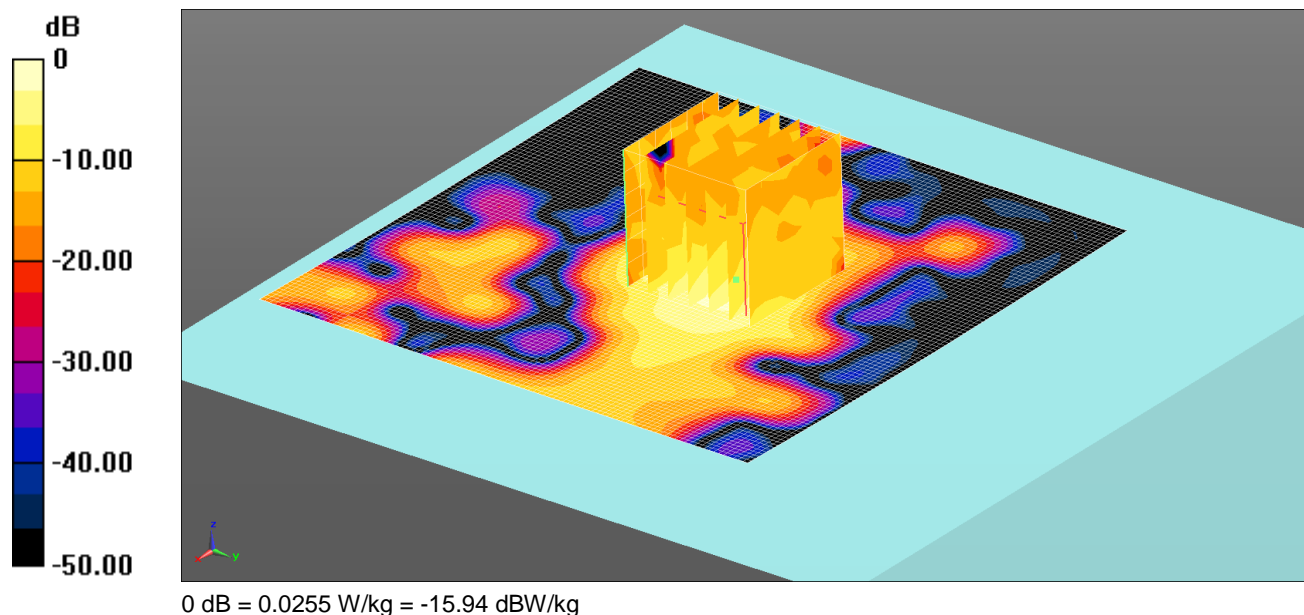
Note: SAR level measured is very low as equivalent to noise floor



SAR/005: Position 3 0mm WLAN 2.4GHz 802.11g 6Mbps CH6

Date: 04/04/2017

DUT: Braster; Type: Braster; Serial: BRA-0030D5



Communication System: UID 0, WLAN 802.11 (0); Frequency: 2437 MHz; Duty Cycle: 1:1

Medium: 2450 MHz MSL Medium parameters used (interpolated):  $f = 2437$  MHz;  $\sigma = 1.996$  S/m;  $\epsilon_r = 52.195$ ;  $\rho = 1000$  kg/m<sup>3</sup>

Phantom section: Flat Section

DASY4 Configuration:

- Probe: EX3DV4 - SN3814; ConvF(7.19, 7.19, 7.19); Calibrated: 30/09/2016;
- Sensor-Surface: 2mm (Mechanical Surface Detection)
- Electronics: DAE4 Sn450; Calibrated: 23/09/2016
- Phantom: ELI v5.0; Type: QDOVA002AA; Serial: TP:xxxx
- ; SEMCAD X Version 14.6.10 (7372)

**Configuration/Position 3/Area Scan 2 (101x101x1):** Interpolated grid: dx=1.200 mm, dy=1.200 mm

Maximum value of SAR (interpolated) = 0.0255 W/kg

**Configuration/Position 3/Zoom Scan (7x7x7) (7x7x7)/Cube 0:** Measurement grid: dx=5mm, dy=5mm, dz=5mm

Reference Value = 2.665 V/m; Power Drift = -1.22 dB

Peak SAR (extrapolated) = 0.0470 W/kg

**SAR(1 g) = 0.016 W/kg; SAR(10 g) = 0.0061 W/kg**

Maximum value of SAR (measured) = 0.0270 W/kg

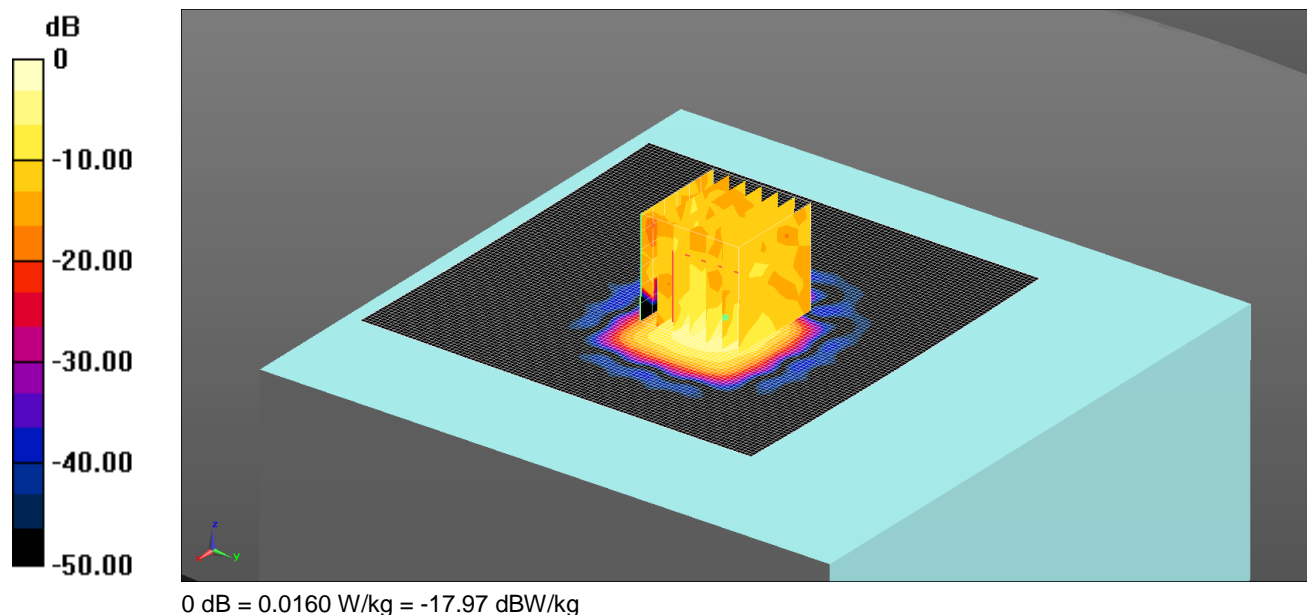
Note: SAR level measured is very low as equivalent to noise floor



SAR/006: Position 3 0mm WLAN 2.4GHz 802.11g 6Mbps CH11

Date: 04/04/2017

DUT: Braster; Type: Braster; Serial: BRA-0030D5



Communication System: UID 0, WLAN 802.11 (0); Frequency: 2462 MHz; Duty Cycle: 1:1

Medium: 2450 MHz MSL Medium parameters used (interpolated):  $f = 2462$  MHz;  $\sigma = 2.025$  S/m;  $\epsilon_r = 52.125$ ;  $\rho = 1000$  kg/m<sup>3</sup>

Phantom section: Flat Section

DASY4 Configuration:

- Probe: EX3DV4 - SN3814; ConvF(7.19, 7.19, 7.19); Calibrated: 30/09/2016;
- Sensor-Surface: 2mm (Mechanical Surface Detection)
- Electronics: DAE4 Sn450; Calibrated: 23/09/2016
- Phantom: ELI v5.0; Type: QDOVA002AA; Serial: TP:xxxx
- ; SEMCAD X Version 14.6.10 (7372)

**Configuration/Position 3/Area Scan 2 (101x101x1):** Interpolated grid: dx=1.200 mm, dy=1.200 mm

Maximum value of SAR (interpolated) = 0.0160 W/kg

**Configuration/Position 3/Zoom Scan (7x7x7) (7x7x7)/Cube 0:** Measurement grid: dx=5mm, dy=5mm, dz=5mm

Reference Value = 1.969 V/m; Power Drift = 0.65 dB

Peak SAR (extrapolated) = 0.0290 W/kg

**SAR(1 g) = 0.00894 W/kg; SAR(10 g) = 0.00313 W/kg**

Maximum value of SAR (measured) = 0.0176 W/kg

Note: SAR level measured is very low as equivalent to noise floor

#### **12.4. Calibration Certificate for E-Field Probe**

This sub-section contains Cal Certificates for E-Field Probes, and is not included in the total number of pages for this report.

A2077

**Calibration Laboratory of**  
**Schmid & Partner**  
**Engineering AG**  
 Zeughausstrasse 43, 8004 Zurich, Switzerland



**S** Schweizerischer Kalibrierdienst  
**C** Service suisse d'étalonnage  
**S** Servizio svizzero di taratura  
**S** Swiss Calibration Service

Accredited by the Swiss Accreditation Service (SAS)  
 The Swiss Accreditation Service is one of the signatories to the EA  
 Multilateral Agreement for the recognition of calibration certificates

Accreditation No.: **SCS 0108**

Client **UL RFI UK**

Certificate No: **EX3-3814\_Sep16**

## CALIBRATION CERTIFICATE

Object **EX3DV4 - SN:3814**

*Checked.*

Calibration procedure(s) **QA CAL-01.v9, QA CAL-14.v4, QA CAL-23.v5, QA CAL-25.v6**  
 Calibration procedure for dosimetric E-field probes

*M. Kauer*

*07/10/2016*

Calibration date: **September 30, 2016**

This calibration certificate documents the traceability to national standards, which realize the physical units of measurements (SI).  
 The measurements and the uncertainties with confidence probability are given on the following pages and are part of the certificate.

All calibrations have been conducted in the closed laboratory facility: environment temperature  $(22 \pm 3)^{\circ}\text{C}$  and humidity  $< 70\%$ .

Calibration Equipment used (M&TE critical for calibration)

Primary Standards	ID	Cal Date (Certificate No.)	Scheduled Calibration
Power meter NRP	SN: 104778	06-Apr-16 (No. 217-02288/02289)	Apr-17
Power sensor NRP-Z91	SN: 103244	06-Apr-16 (No. 217-02288)	Apr-17
Power sensor NRP-Z91	SN: 103245	06-Apr-16 (No. 217-02289)	Apr-17
Reference 20 dB Attenuator	SN: S5277 (20x)	05-Apr-16 (No. 217-02293)	Apr-17
Reference Probe ES3DV2	SN: 3013	31-Dec-15 (No. ES3-3013_Dec15)	Dec-16
DAE4	SN: 660	23-Dec-15 (No. DAE4-660_Dec15)	Dec-16
Secondary Standards	ID	Check Date (in house)	Scheduled Check
Power meter E4419B	SN: GB41293874	06-Apr-16 (in house check Jun-16)	In house check: Jun-18
Power sensor E4412A	SN: MY41498087	06-Apr-16 (in house check Jun-16)	In house check: Jun-18
Power sensor E4412A	SN: 000110210	06-Apr-16 (in house check Jun-16)	In house check: Jun-18
RF generator HP 8648C	SN: US3642U01700	04-Aug-99 (in house check Jun-16)	In house check: Jun-18
Network Analyzer HP 8753E	SN: US37390585	18-Oct-01 (in house check Oct-15)	In house check: Oct-16

Calibrated by:	Name Claudio Leubler	Function Laboratory Technician	Signature 
Approved by:	Katja Pokovic	Technical Manager	
This calibration certificate shall not be reproduced except in full without written approval of the laboratory.			Issued: October 3, 2016





Accredited by the Swiss Accreditation Service (SAS)  
 The Swiss Accreditation Service is one of the signatories to the EA  
 Multilateral Agreement for the recognition of calibration certificates

Accreditation No.: **SCS 0108**

### Glossary:

TSL	tissue simulating liquid
NORM <sub>x,y,z</sub>	sensitivity in free space
ConvF	sensitivity in TSL / NORM <sub>x,y,z</sub>
DCP	diode compression point
CF	crest factor (1/duty_cycle) of the RF signal
A, B, C, D	modulation dependent linearization parameters
Polarization $\varphi$	$\varphi$ rotation around probe axis
Polarization $\vartheta$	$\vartheta$ rotation around an axis that is in the plane normal to probe axis (at measurement center), i.e., $\vartheta = 0$ is normal to probe axis
Connector Angle	information used in DASY system to align probe sensor X to the robot coordinate system

### Calibration is Performed According to the Following Standards:

- IEEE Std 1528-2013, "IEEE Recommended Practice for Determining the Peak Spatial-Averaged Specific Absorption Rate (SAR) in the Human Head from Wireless Communications Devices: Measurement Techniques", June 2013
- IEC 62209-1, "Procedure to measure the Specific Absorption Rate (SAR) for hand-held devices used in close proximity to the ear (frequency range of 300 MHz to 3 GHz)", February 2005
- IEC 62209-2, "Procedure to determine the Specific Absorption Rate (SAR) for wireless communication devices used in close proximity to the human body (frequency range of 30 MHz to 6 GHz)", March 2010
- KDB 865664, "SAR Measurement Requirements for 100 MHz to 6 GHz"

### Methods Applied and Interpretation of Parameters:

- NORM<sub>x,y,z</sub>**: Assessed for E-field polarization  $\vartheta = 0$  ( $f \leq 900$  MHz in TEM-cell;  $f > 1800$  MHz: R22 waveguide). NORM<sub>x,y,z</sub> are only intermediate values, i.e., the uncertainties of NORM<sub>x,y,z</sub> does not affect the  $E^2$ -field uncertainty inside TSL (see below ConvF).
- NORM(f)<sub>x,y,z</sub>** = NORM<sub>x,y,z</sub> \* frequency\_response (see Frequency Response Chart). This linearization is implemented in DASY4 software versions later than 4.2. The uncertainty of the frequency response is included in the stated uncertainty of ConvF.
- DCP<sub>x,y,z</sub>**: DCP are numerical linearization parameters assessed based on the data of power sweep with CW signal (no uncertainty required). DCP does not depend on frequency nor media.
- PAR**: PAR is the Peak to Average Ratio that is not calibrated but determined based on the signal characteristics
- A<sub>x,y,z</sub>; B<sub>x,y,z</sub>; C<sub>x,y,z</sub>; D<sub>x,y,z</sub>; VR<sub>x,y,z</sub>**: A, B, C, D are numerical linearization parameters assessed based on the data of power sweep for specific modulation signal. The parameters do not depend on frequency nor media. VR is the maximum calibration range expressed in RMS voltage across the diode.
- ConvF and Boundary Effect Parameters**: Assessed in flat phantom using E-field (or Temperature Transfer Standard for  $f \leq 800$  MHz) and inside waveguide using analytical field distributions based on power measurements for  $f > 800$  MHz. The same setups are used for assessment of the parameters applied for boundary compensation (alpha, depth) of which typical uncertainty values are given. These parameters are used in DASY4 software to improve probe accuracy close to the boundary. The sensitivity in TSL corresponds to NORM<sub>x,y,z</sub> \* ConvF whereby the uncertainty corresponds to that given for ConvF. A frequency dependent ConvF is used in DASY version 4.4 and higher which allows extending the validity from  $\pm 50$  MHz to  $\pm 100$  MHz.
- Spherical isotropy (3D deviation from isotropy)**: in a field of low gradients realized using a flat phantom exposed by a patch antenna.
- Sensor Offset**: The sensor offset corresponds to the offset of virtual measurement center from the probe tip (on probe axis). No tolerance required.
- Connector Angle**: The angle is assessed using the information gained by determining the NORM<sub>x</sub> (no uncertainty required).

# Probe EX3DV4

## SN:3814

Manufactured:	September 2, 2011
Repaired:	September 27, 2016
Calibrated:	September 30, 2016

Calibrated for DASY/EASY Systems  
(Note: non-compatible with DASY2 system!)

## DASY/EASY - Parameters of Probe: EX3DV4 - SN:3814

### Basic Calibration Parameters

	Sensor X	Sensor Y	Sensor Z	Unc (k=2)
Norm ( $\mu\text{V}/(\text{V}/\text{m})^2$ ) <sup>A</sup>	0.47	0.51	0.51	$\pm 10.1 \%$
DCP (mV) <sup>B</sup>	100.1	99.2	100.5	

### Modulation Calibration Parameters

UID	Communication System Name		A dB	B dB/ $\mu\text{V}$	C	D dB	VR mV	Unc <sup>E</sup> (k=2)
0	CW	X	0.0	0.0	1.0	0.00	189.5	$\pm 3.0 \%$
		Y	0.0	0.0	1.0		182.4	
		Z	0.0	0.0	1.0		188.6	

Note: For details on UID parameters see Appendix.

### Sensor Model Parameters

	C1 fF	C2 fF	$\alpha$ $\text{V}^{-1}$	T1 $\text{ms} \cdot \text{V}^{-2}$	T2 $\text{ms} \cdot \text{V}^{-1}$	T3 ms	T4 $\text{V}^{-2}$	T5 $\text{V}^{-1}$	T6
X	46.28	349.7	36.44	13.95	0.951	4.992	0.582	0.404	1.006
Y	45.1	343	36.85	11.56	0.754	5.026	0.111	0.415	1.006
Z	42.92	328.6	37.39	7.804	0.802	5.034	0.147	0.47	1.007

The reported uncertainty of measurement is stated as the standard uncertainty of measurement multiplied by the coverage factor  $k=2$ , which for a normal distribution corresponds to a coverage probability of approximately 95%.

<sup>A</sup> The uncertainties of Norm X,Y,Z do not affect the  $E^2$ -field uncertainty inside TSL (see Pages 5 and 6).

<sup>B</sup> Numerical linearization parameter: uncertainty not required.

<sup>E</sup> Uncertainty is determined using the max. deviation from linear response applying rectangular distribution and is expressed for the square of the field value.

## DASY/EASY - Parameters of Probe: EX3DV4 - SN:3814

### Calibration Parameter Determined in Head Tissue Simulating Media

f (MHz) <sup>C</sup>	Relative Permittivity <sup>F</sup>	Conductivity (S/m) <sup>F</sup>	ConvF X	ConvF Y	ConvF Z	Alpha <sup>G</sup>	Depth (mm) <sup>G</sup>	Unc (k=2)
750	41.9	0.89	9.53	9.53	9.53	0.44	0.90	± 12.0 %
835	41.5	0.90	9.34	9.34	9.34	0.49	0.80	± 12.0 %
900	41.5	0.97	9.19	9.19	9.19	0.45	0.80	± 12.0 %
1450	40.5	1.20	7.99	7.99	7.99	0.35	0.80	± 12.0 %
1750	40.1	1.37	8.09	8.09	8.09	0.30	0.80	± 12.0 %
1900	40.0	1.40	7.81	7.81	7.81	0.33	0.80	± 12.0 %
2100	39.8	1.49	8.06	8.06	8.06	0.36	0.82	± 12.0 %
2300	39.5	1.67	7.49	7.49	7.49	0.35	0.80	± 12.0 %
2450	39.2	1.80	7.12	7.12	7.12	0.39	0.80	± 12.0 %
2600	39.0	1.96	6.95	6.95	6.95	0.30	0.94	± 12.0 %
3700	37.7	3.12	6.77	6.77	6.77	0.27	1.20	± 13.1 %
5250	35.9	4.71	5.09	5.09	5.09	0.35	1.80	± 13.1 %
5600	35.5	5.07	4.74	4.74	4.74	0.40	1.80	± 13.1 %
5750	35.4	5.22	4.77	4.77	4.77	0.45	1.80	± 13.1 %

<sup>C</sup> Frequency validity above 300 MHz of ± 100 MHz only applies for DASY v4.4 and higher (see Page 2), else it is restricted to ± 50 MHz. The uncertainty is the RSS of the ConvF uncertainty at calibration frequency and the uncertainty for the indicated frequency band. Frequency validity below 300 MHz is ± 10, 25, 40, 50 and 70 MHz for ConvF assessments at 30, 64, 128, 150 and 220 MHz respectively. Above 5 GHz frequency validity can be extended to ± 110 MHz.

<sup>F</sup> At frequencies below 3 GHz, the validity of tissue parameters ( $\epsilon$  and  $\sigma$ ) can be relaxed to ± 10% if liquid compensation formula is applied to measured SAR values. At frequencies above 3 GHz, the validity of tissue parameters ( $\epsilon$  and  $\sigma$ ) is restricted to ± 5%. The uncertainty is the RSS of the ConvF uncertainty for indicated target tissue parameters.

<sup>G</sup> Alpha/Depth are determined during calibration. SPEAG warrants that the remaining deviation due to the boundary effect after compensation is always less than ± 1% for frequencies below 3 GHz and below ± 2% for frequencies between 3-6 GHz at any distance larger than half the probe tip diameter from the boundary.



## DASY/EASY - Parameters of Probe: EX3DV4 - SN:3814

### Calibration Parameter Determined in Body Tissue Simulating Media

f (MHz) <sup>C</sup>	Relative Permittivity <sup>F</sup>	Conductivity (S/m) <sup>F</sup>	ConvF X	ConvF Y	ConvF Z	Alpha <sup>G</sup>	Depth <sup>G</sup> (mm)	Unc (k=2)
750	55.5	0.96	9.27	9.27	9.27	0.30	1.03	± 12.0 %
835	55.2	0.97	9.14	9.14	9.14	0.46	0.87	± 12.0 %
900	55.0	1.05	9.17	9.17	9.17	0.48	0.80	± 12.0 %
1450	54.0	1.30	8.10	8.10	8.10	0.27	0.80	± 12.0 %
1750	53.4	1.49	7.80	7.80	7.80	0.43	0.80	± 12.0 %
1900	53.3	1.52	7.53	7.53	7.53	0.29	1.01	± 12.0 %
2100	53.2	1.62	8.01	8.01	8.01	0.41	0.80	± 12.0 %
2300	52.9	1.81	7.43	7.43	7.43	0.42	0.80	± 12.0 %
2450	52.7	1.95	7.19	7.19	7.19	0.34	0.90	± 12.0 %
2600	52.5	2.16	7.00	7.00	7.00	0.36	0.90	± 12.0 %
3700	51.0	3.55	6.61	6.61	6.61	0.30	1.20	± 13.1 %
5250	48.9	5.36	4.36	4.36	4.36	0.50	1.90	± 13.1 %
5600	48.5	5.77	3.80	3.80	3.80	0.60	1.90	± 13.1 %
5750	48.3	5.94	4.03	4.03	4.03	0.60	1.90	± 13.1 %

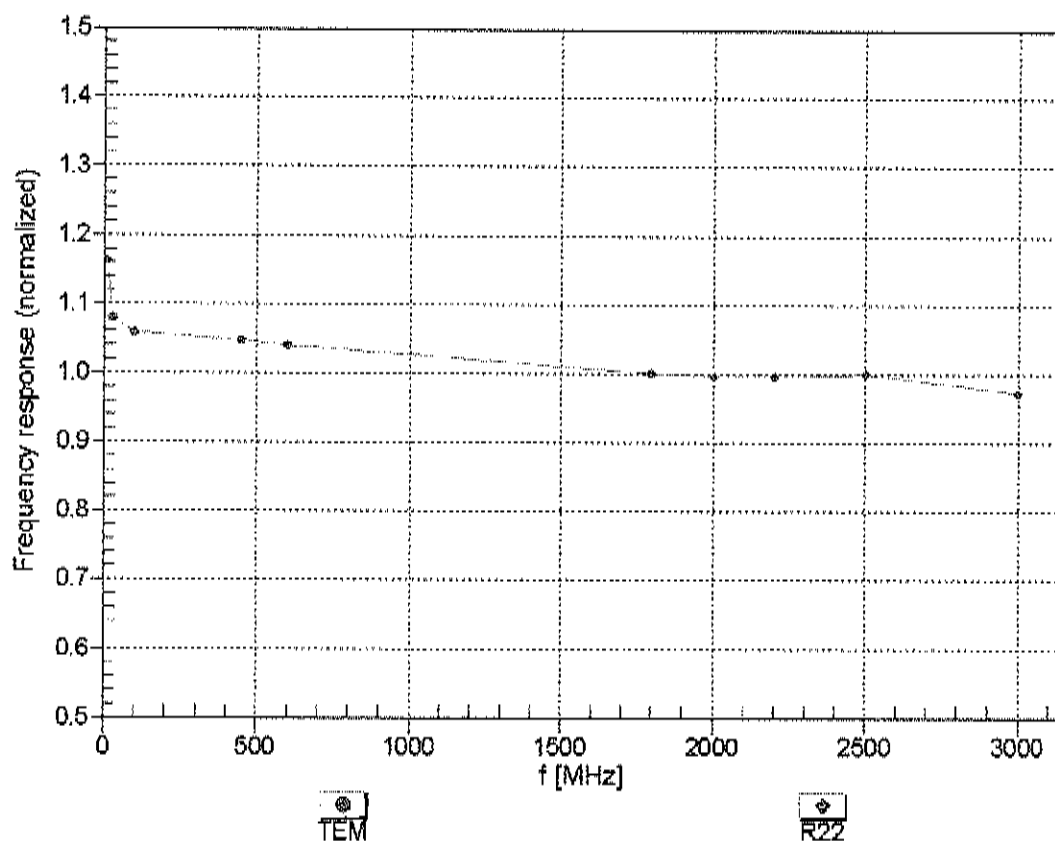
<sup>C</sup> Frequency validity above 300 MHz of ± 100 MHz only applies for DASY v4.4 and higher (see Page 2), else it is restricted to ± 50 MHz. The uncertainty is the RSS of the ConvF uncertainty at calibration frequency and the uncertainty for the indicated frequency band. Frequency validity below 300 MHz is ± 10, 25, 40, 50 and 70 MHz for ConvF assessments at 30, 54, 128, 150 and 220 MHz respectively. Above 5 GHz frequency validity can be extended to ± 110 MHz.

<sup>F</sup> At frequencies below 3 GHz, the validity of tissue parameters ( $\epsilon$  and  $\sigma$ ) can be relaxed to ± 10% if liquid compensation formula is applied to measured SAR values. At frequencies above 3 GHz, the validity of tissue parameters ( $\epsilon$  and  $\sigma$ ) is restricted to ± 5%. The uncertainty is the RSS of the ConvF uncertainty for indicated target tissue parameters.

<sup>G</sup> Alpha/Depth are determined during calibration. SPEAG warrants that the remaining deviation due to the boundary effect after compensation is always less than ± 1% for frequencies below 3 GHz and below ± 2% for frequencies between 3-6 GHz at any distance larger than half the probe tip diameter from the boundary.

## Frequency Response of E-Field

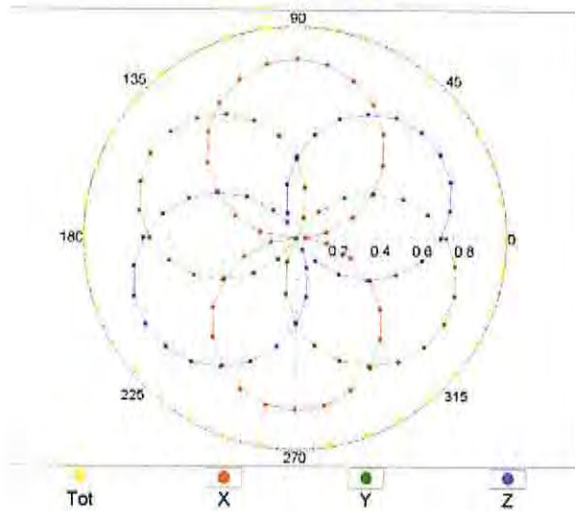
(TEM-Cell:ifi110 EXX, Waveguide: R22)



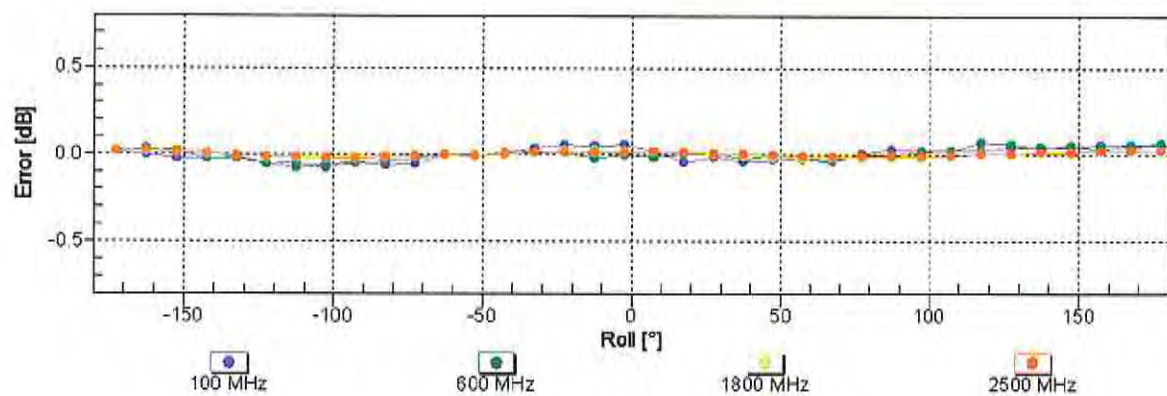
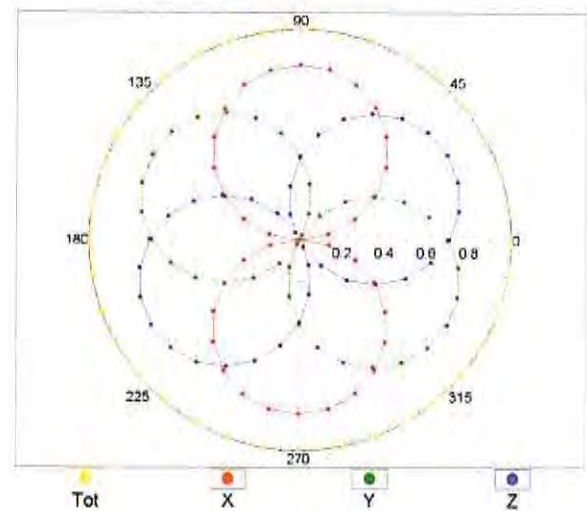
Uncertainty of Frequency Response of E-field:  $\pm 6.3\%$  ( $k=2$ )

## Receiving Pattern ( $\phi$ ), $\theta = 0^\circ$

f=600 MHz, TEM

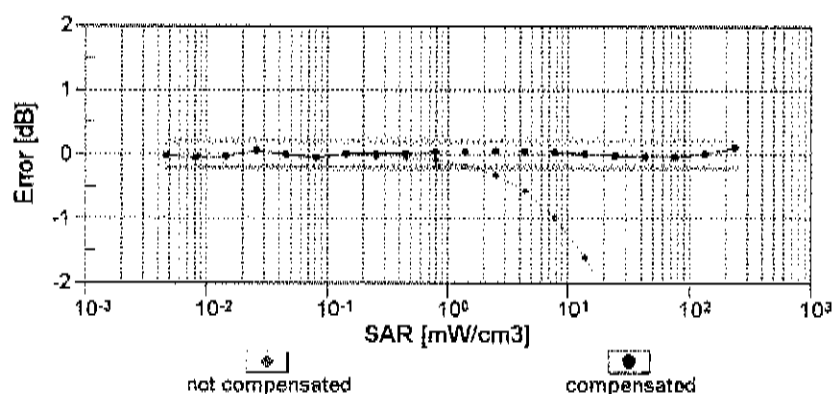
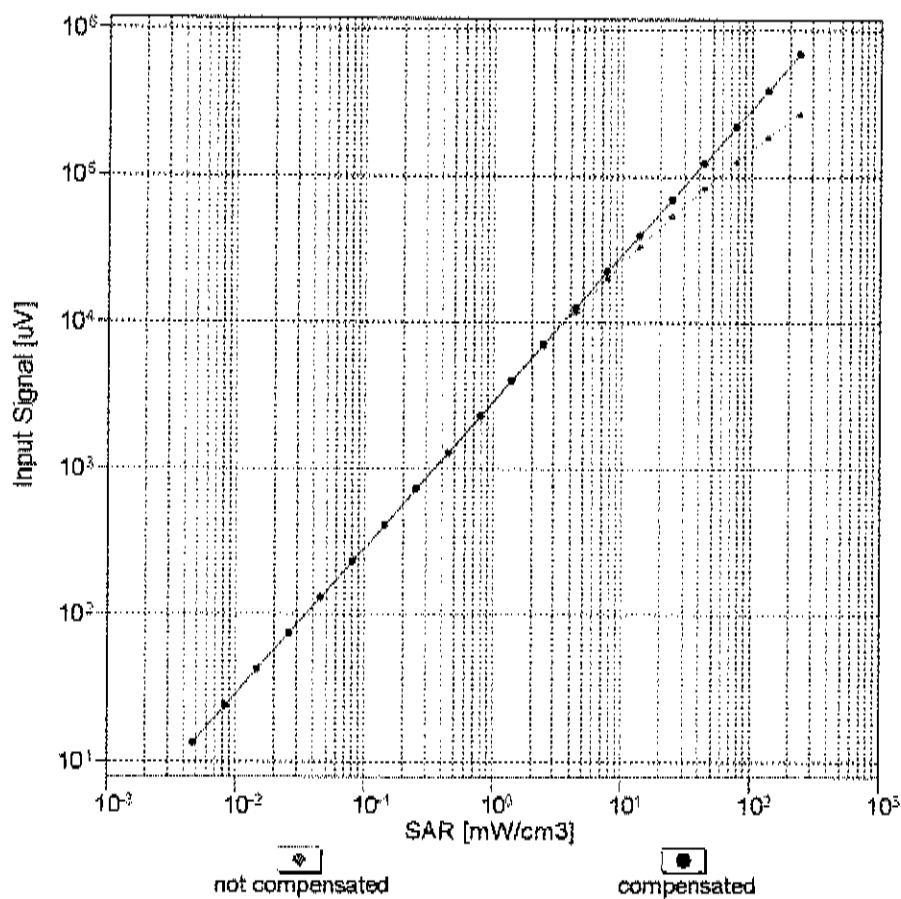


f=1800 MHz, R22



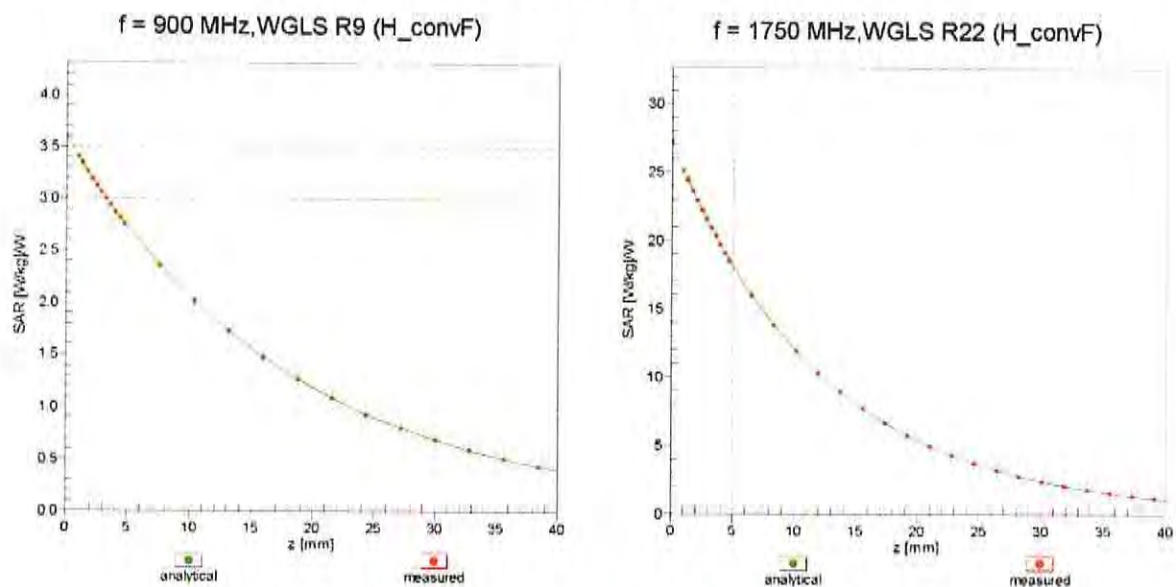
Uncertainty of Axial Isotropy Assessment:  $\pm 0.5\%$  ( $k=2$ )

# Dynamic Range $f(\text{SAR}_{\text{head}})$ (TEM cell, $f_{\text{eval}} = 1900 \text{ MHz}$ )



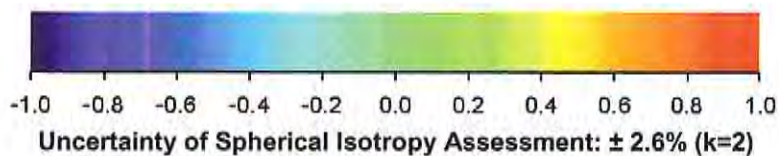
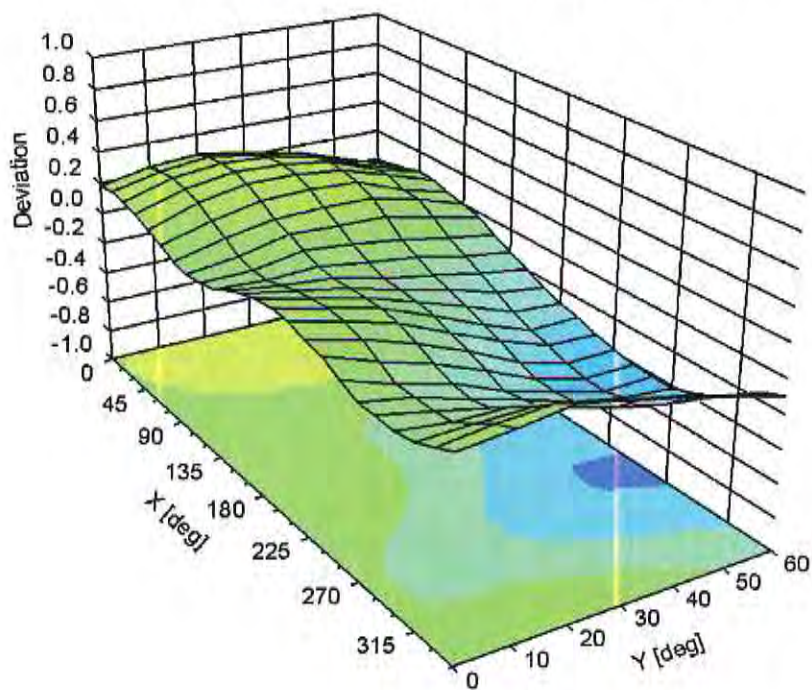
Uncertainty of Linearity Assessment:  $\pm 0.6\%$  ( $k=2$ )

## Conversion Factor Assessment



## Deviation from Isotropy in Liquid

Error ( $\phi, \theta$ ),  $f = 900 \text{ MHz}$



Uncertainty of Spherical Isotropy Assessment:  $\pm 2.6\%$  ( $k=2$ )

## DASY/EASY - Parameters of Probe: EX3DV4 - SN:3814

### Other Probe Parameters

Sensor Arrangement	Triangular
Connector Angle (°)	27.4
Mechanical Surface Detection Mode	enabled
Optical Surface Detection Mode	disabled
Probe Overall Length	337 mm
Probe Body Diameter	10 mm
Tip Length	9 mm
Tip Diameter	2.5 mm
Probe Tip to Sensor X Calibration Point	1 mm
Probe Tip to Sensor Y Calibration Point	1 mm
Probe Tip to Sensor Z Calibration Point	1 mm
Recommended Measurement Distance from Surface	1.4 mm

**Appendix: Modulation Calibration Parameters**

UID	Communication System Name		A dB	B dB $\sqrt{\mu V}$	C	D dB	VR mV	Max Unc <sup>E</sup> (k=2)
0	CW	X	0.00	0.00	1.00	0.00	189.5	$\pm 3.0 \%$
		Y	0.00	0.00	1.00		182.4	
		Z	0.00	0.00	1.00		186.6	
10010- CAA	SAR Validation (Square, 100ms, 10ms)	X	2.78	66.85	11.18	10.00	20.0	$\pm 9.6 \%$
		Y	3.24	69.14	12.27		20.0	
		Z	3.32	69.29	12.35		20.0	
10011- CAB	UMTS-FDD (WCDMA)	X	1.09	68.48	16.06	0.00	150.0	$\pm 9.6 \%$
		Y	1.13	69.00	16.37		150.0	
		Z	1.24	71.20	17.59		150.0	
10012- CAB	IEEE 802.11b WiFi 2.4 GHz (DSSS, 1 Mbps)	X	1.19	64.09	15.48	0.41	150.0	$\pm 9.6 \%$
		Y	1.20	64.18	15.65		150.0	
		Z	1.19	64.63	16.15		150.0	
10013- CAB	IEEE 802.11g WiFi 2.4 GHz (DSSS-OFDM, 6 Mbps)	X	4.85	66.58	17.01	1.46	150.0	$\pm 9.6 \%$
		Y	4.86	66.69	17.17		150.0	
		Z	4.84	66.81	17.30		150.0	
10021- DAB	GSM-FDD (TDMA, GMSK)	X	32.02	97.62	23.12	9.39	50.0	$\pm 9.6 \%$
		Y	100.00	113.74	27.46		50.0	
		Z	100.00	114.51	27.84		50.0	
10023- DAB	GPRS-FDD (TDMA, GMSK, TN 0)	X	19.30	91.13	21.33	9.57	50.0	$\pm 9.6 \%$
		Y	100.00	113.41	27.36		50.0	
		Z	100.00	114.04	27.69		50.0	
10024- DAB	GPRS-FDD (TDMA, GMSK, TN 0-1)	X	100.00	109.30	24.41	6.56	60.0	$\pm 9.6 \%$
		Y	100.00	113.34	26.12		60.0	
		Z	100.00	115.58	27.01		60.0	
10025- DAB	EDGE-FDD (TDMA, 8PSK, TN 0)	X	5.30	75.19	27.81	12.57	50.0	$\pm 9.6 \%$
		Y	11.86	102.27	40.78		50.0	
		Z	5.09	74.93	28.33		50.0	
10026- DAB	EDGE-FDD (TDMA, 8PSK, TN 0-1)	X	9.44	90.87	31.58	9.56	60.0	$\pm 9.6 \%$
		Y	10.56	96.01	34.45		60.0	
		Z	7.93	88.91	31.78		60.0	
10027- DAB	GPRS-FDD (TDMA, GMSK, TN 0-1-2)	X	100.00	108.84	23.46	4.80	80.0	$\pm 9.6 \%$
		Y	100.00	114.74	25.92		80.0	
		Z	100.00	118.80	27.49		80.0	
10028- DAB	GPRS-FDD (TDMA, GMSK, TN 0-1-2-3)	X	100.00	109.66	23.17	3.55	100.0	$\pm 9.6 \%$
		Y	100.00	117.62	26.45		100.0	
		Z	100.00	124.24	28.98		100.0	
10029- DAB	EDGE-FDD (TDMA, 8PSK, TN 0-1-2)	X	6.04	81.21	26.78	7.80	60.0	$\pm 9.6 \%$
		Y	5.98	82.48	28.06		80.0	
		Z	4.98	78.57	26.52		80.0	
10030- CAA	IEEE 802.15.1 Bluetooth (GFSK, DH1)	X	100.00	107.49	23.14	5.30	70.0	$\pm 9.6 \%$
		Y	100.00	112.16	25.09		70.0	
		Z	100.00	114.87	26.11		70.0	
10031- CAA	IEEE 802.15.1 Bluetooth (GFSK, DH3)	X	100.00	108.95	21.64	1.88	100.0	$\pm 9.6 \%$
		Y	100.00	119.63	25.86		100.0	
		Z	100.00	129.93	29.60		100.0	



10032-CAA	IEEE 802.15.1 Bluetooth (GFSK, DH5)	X	100.00	115.94	23.62	1.17	100.0	± 9.6 %
		Y	100.00	132.47	29.99		100.0	
		Z	100.00	156.26	38.59		100.0	
10033-CAA	IEEE 802.15.1 Bluetooth (PI/4-DQPSK, DH1)	X	7.05	84.43	21.46	5.30	70.0	± 9.6 %
		Y	12.51	95.35	25.61		70.0	
		Z	15.91	100.27	27.24		70.0	
10034-CAA	IEEE 802.15.1 Bluetooth (PI/4-DQPSK, DH3)	X	2.85	75.59	17.26	1.88	100.0	± 9.6 %
		Y	3.55	79.70	19.17		100.0	
		Z	5.03	85.68	21.30		100.0	
10035-CAA	IEEE 802.15.1 Bluetooth (PI/4-DQPSK, DH5)	X	2.10	72.94	16.12	1.17	100.0	± 9.6 %
		Y	2.38	75.43	17.38		100.0	
		Z	3.13	80.11	19.15		100.0	
10036-CAA	IEEE 802.15.1 Bluetooth (8-DPSK, DH1)	X	8.75	87.84	22.66	5.30	70.0	± 9.6 %
		Y	18.16	101.40	27.45		70.0	
		Z	27.30	109.10	29.75		70.0	
10037-CAA	IEEE 802.15.1 Bluetooth (8-DPSK, DH3)	X	2.66	74.77	16.91	1.88	100.0	± 9.6 %
		Y	3.24	78.58	18.74		100.0	
		Z	4.28	83.55	20.58		100.0	
10038-CAA	IEEE 802.15.1 Bluetooth (8-DPSK, DH5)	X	2.13	73.35	16.40	1.17	100.0	± 9.6 %
		Y	2.41	75.86	17.67		100.0	
		Z	3.20	80.81	19.54		100.0	
10039-CAB	CDMA2000 (1xRTT, RC1)	X	2.26	75.24	17.07	0.00	150.0	± 9.6 %
		Y	2.26	75.23	17.00		150.0	
		Z	3.66	82.12	19.33		150.0	
10042-CAB	IS-54 / IS-136 FDD (TDMA/FDM, PI/4-DQPSK, Halfrate)	X	25.57	93.07	20.45	7.78	50.0	± 9.6 %
		Y	100.00	110.50	25.14		50.0	
		Z	100.00	111.56	25.56		50.0	
10044-CAA	IS-91/EIA/TIA-553 FDD (FDMA, FM)	X	0.00	99.48	1.05	0.00	150.0	± 9.6 %
		Y	0.00	99.07	0.64		150.0	
		Z	0.00	107.28	0.38		150.0	
10048-CAA	DECT (TDD, TDMA/FDM, GFSK, Full Slot, 24)	X	8.40	77.72	18.41	13.80	25.0	± 9.6 %
		Y	19.08	89.08	22.17		25.0	
		Z	22.60	90.77	22.74		25.0	
10049-CAA	DECT (TDD, TDMA/FDM, GFSK, Double Slot, 12)	X	9.33	81.06	18.43	10.79	40.0	± 9.6 %
		Y	34.50	98.88	23.97		40.0	
		Z	63.49	106.94	26.17		40.0	
10056-CAA	UMTS-TDD (TD-SCDMA, 1.28 Mcps)	X	10.98	86.24	22.33	9.03	50.0	± 9.6 %
		Y	23.97	100.07	27.09		50.0	
		Z	28.09	102.68	27.83		50.0	
10058-DAB	EDGE-FDD (TDMA, 8PSK, TN 0-1-2-3)	X	4.67	76.39	24.09	6.55	100.0	± 9.6 %
		Y	4.50	76.65	24.82		100.0	
		Z	3.92	74.06	23.83		100.0	
10059-CAB	IEEE 802.11b WiFi 2.4 GHz (DSSS, 2 Mbps)	X	1.23	65.16	16.00	0.61	110.0	± 9.6 %
		Y	1.23	65.26	16.25		110.0	
		Z	1.22	65.72	16.77		110.0	
10060-CAB	IEEE 802.11b WiFi 2.4 GHz (DSSS, 5.5 Mbps)	X	11.17	103.56	27.20	1.30	110.0	± 9.6 %
		Y	38.07	125.79	33.67		110.0	
		Z	100.00	146.05	39.06		110.0	

10061-CAB	IEEE 802.11b WiFi 2.4 GHz (DSSS, 11 Mbps)	X	2.80	78.81	21.19	2.04	110.0	± 9.6 %
		Y	2.93	81.01	22.71		110.0	
		Z	2.84	82.05	23.60		110.0	
10062-CAB	IEEE 802.11a/h WiFi 5 GHz (OFDM, 6 Mbps)	X	4.67	66.65	16.54	0.49	100.0	± 9.6 %
		Y	4.67	66.72	16.64		100.0	
		Z	4.66	66.86	16.78		100.0	
10063-CAB	IEEE 802.11a/h WiFi 5 GHz (OFDM, 9 Mbps)	X	4.68	66.72	16.61	0.72	100.0	± 9.6 %
		Y	4.68	66.80	16.72		100.0	
		Z	4.67	66.94	16.87		100.0	
10064-CAB	IEEE 802.11a/h WiFi 5 GHz (OFDM, 12 Mbps)	X	4.96	66.96	16.82	0.86	100.0	± 9.6 %
		Y	4.96	67.05	16.94		100.0	
		Z	4.94	67.17	17.08		100.0	
10065-CAB	IEEE 802.11a/h WiFi 5 GHz (OFDM, 18 Mbps)	X	4.82	66.83	16.88	1.21	100.0	± 9.6 %
		Y	4.83	66.92	17.02		100.0	
		Z	4.80	67.03	17.16		100.0	
10066-CAB	IEEE 802.11a/h WiFi 5 GHz (OFDM, 24 Mbps)	X	4.83	66.83	17.02	1.46	100.0	± 9.6 %
		Y	4.84	66.94	17.18		100.0	
		Z	4.81	67.03	17.31		100.0	
10067-CAB	IEEE 802.11a/h WiFi 5 GHz (OFDM, 36 Mbps)	X	5.12	66.97	17.42	2.04	100.0	± 9.6 %
		Y	5.13	67.11	17.61		100.0	
		Z	5.10	67.20	17.73		100.0	
10068-CAB	IEEE 802.11a/h WiFi 5 GHz (OFDM, 48 Mbps)	X	5.16	66.99	17.60	2.55	100.0	± 9.6 %
		Y	5.17	67.13	17.82		100.0	
		Z	5.13	67.18	17.91		100.0	
10069-CAB	IEEE 802.11a/h WiFi 5 GHz (OFDM, 54 Mbps)	X	5.24	67.00	17.79	2.67	100.0	± 9.6 %
		Y	5.25	67.15	18.02		100.0	
		Z	5.21	67.19	18.10		100.0	
10071-CAB	IEEE 802.11g WiFi 2.4 GHz (DSSS/OFDM, 9 Mbps)	X	4.94	66.63	17.27	1.99	100.0	± 9.6 %
		Y	4.95	66.76	17.46		100.0	
		Z	4.93	66.86	17.58		100.0	
10072-CAB	IEEE 802.11g WiFi 2.4 GHz (DSSS/OFDM, 12 Mbps)	X	4.91	66.93	17.46	2.30	100.0	± 9.6 %
		Y	4.93	67.07	17.66		100.0	
		Z	4.90	67.15	17.78		100.0	
10073-CAB	IEEE 802.11g WiFi 2.4 GHz (DSSS/OFDM, 18 Mbps)	X	4.97	67.07	17.74	2.83	100.0	± 9.6 %
		Y	4.99	67.23	17.98		100.0	
		Z	4.96	67.29	18.09		100.0	
10074-CAB	IEEE 802.11g WiFi 2.4 GHz (DSSS/OFDM, 24 Mbps)	X	4.96	66.96	17.87	3.30	100.0	± 9.6 %
		Y	4.97	67.12	18.12		100.0	
		Z	4.94	67.17	18.22		100.0	
10075-CAB	IEEE 802.11g WiFi 2.4 GHz (DSSS/OFDM, 36 Mbps)	X	5.00	67.08	18.16	3.82	90.0	± 9.6 %
		Y	5.01	67.23	18.42		90.0	
		Z	4.97	67.24	18.49		90.0	
10076-CAB	IEEE 802.11g WiFi 2.4 GHz (DSSS/OFDM, 48 Mbps)	X	5.02	66.88	18.27	4.15	90.0	± 9.6 %
		Y	5.03	67.03	18.55		90.0	
		Z	4.99	67.05	18.62		90.0	
10077-CAB	IEEE 802.11g WiFi 2.4 GHz (DSSS/OFDM, 54 Mbps)	X	5.04	66.95	18.36	4.30	90.0	± 9.6 %
		Y	5.05	67.11	18.65		90.0	
		Z	5.02	67.12	18.72		90.0	

10081-CAB	CDMA2000 (1xRTT, RC3)	X	0.93	67.59	13.44	0.00	150.0	± 9.6 %
		Y	0.95	67.87	13.53		150.0	
		Z	1.13	70.73	14.65		150.0	
10082-CAB	IS-54 / IS-136 FDD (TDMA/FDM, PI/4-DQPSK, Fullrate)	X	0.82	60.00	4.81	4.77	80.0	± 9.6 %
		Y	0.75	60.00	4.75		80.0	
		Z	0.67	60.00	4.59		80.0	
10090-DAB	GPRS-FDD (TDMA, GMSK, TN 0-4)	X	100.00	109.32	24.44	6.56	60.0	± 9.6 %
		Y	100.00	113.35	26.14		60.0	
		Z	100.00	115.59	27.04		60.0	
10097-CAB	UMTS-FDD (HSDPA)	X	1.90	68.46	16.20	0.00	150.0	± 9.6 %
		Y	1.92	68.62	16.29		150.0	
		Z	2.03	69.99	17.04		150.0	
10098-CAB	UMTS-FDD (HSUPA, Subtest 2)	X	1.86	68.42	16.18	0.00	150.0	± 9.6 %
		Y	1.88	68.59	16.27		150.0	
		Z	1.99	69.97	17.03		150.0	
10099-DAB	EDGE-FDD (TDMA, 8PSK, TN 0-4)	X	9.49	90.95	31.59	9.56	60.0	± 9.6 %
		Y	10.64	96.15	34.49		60.0	
		Z	7.98	89.03	31.82		60.0	
10100-CAB	LTE-FDD (SC-FDMA, 100% RB, 20 MHz, QPSK)	X	3.21	70.83	17.09	0.00	150.0	± 9.6 %
		Y	3.22	70.88	17.16		150.0	
		Z	3.32	71.70	17.67		150.0	
10101-CAB	LTE-FDD (SC-FDMA, 100% RB, 20 MHz, 16-QAM)	X	3.27	67.73	16.16	0.00	150.0	± 9.6 %
		Y	3.28	67.75	16.22		150.0	
		Z	3.30	68.09	16.49		150.0	
10102-CAB	LTE-FDD (SC-FDMA, 100% RB, 20 MHz, 64-QAM)	X	3.38	67.70	16.25	0.00	150.0	± 9.6 %
		Y	3.38	67.69	16.29		150.0	
		Z	3.40	68.04	16.57		150.0	
10103-CAB	LTE-TDD (SC-FDMA, 100% RB, 20 MHz, QPSK)	X	6.00	74.28	19.64	3.98	65.0	± 9.6 %
		Y	5.98	74.91	20.25		65.0	
		Z	5.75	74.82	20.42		65.0	
10104-CAB	LTE-TDD (SC-FDMA, 100% RB, 20 MHz, 16-QAM)	X	6.28	73.29	20.03	3.98	65.0	± 9.6 %
		Y	6.15	73.51	20.45		65.0	
		Z	5.78	72.77	20.27		65.0	
10105-CAB	LTE-TDD (SC-FDMA, 100% RB, 20 MHz, 64-QAM)	X	5.72	71.37	19.47	3.98	65.0	± 9.6 %
		Y	5.58	71.42	19.79		65.0	
		Z	5.32	70.89	19.69		65.0	
10108-CAC	LTE-FDD (SC-FDMA, 100% RB, 10 MHz, QPSK)	X	2.80	70.09	16.94	0.00	150.0	± 9.6 %
		Y	2.81	70.17	17.02		150.0	
		Z	2.89	71.06	17.57		150.0	
10109-CAC	LTE-FDD (SC-FDMA, 100% RB, 10 MHz, 16-QAM)	X	2.93	67.66	16.10	0.00	150.0	± 9.6 %
		Y	2.93	67.68	16.15		150.0	
		Z	2.96	68.15	16.48		150.0	
10110-CAC	LTE-FDD (SC-FDMA, 100% RB, 5 MHz, QPSK)	X	2.28	69.28	16.58	0.00	150.0	± 9.6 %
		Y	2.29	69.42	16.69		150.0	
		Z	2.37	70.49	17.31		150.0	
10111-CAC	LTE-FDD (SC-FDMA, 100% RB, 5 MHz, 16-QAM)	X	2.68	68.78	16.53	0.00	150.0	± 9.6 %
		Y	2.67	68.73	16.50		150.0	
		Z	2.75	69.72	17.06		150.0	

10112-CAC	LTE-FDD (SC-FDMA, 100% RB, 10 MHz, 64-QAM)	X	3.06	67.65	16.15	0.00	150.0	± 9.6 %
		Y	3.05	67.66	16.19		150.0	
		Z	3.08	68.12	16.52		150.0	
10113-CAC	LTE-FDD (SC-FDMA, 100% RB, 5 MHz, 64-QAM)	X	2.83	68.92	16.65	0.00	150.0	± 9.6 %
		Y	2.82	68.85	16.61		150.0	
		Z	2.90	69.81	17.16		150.0	
10114-CAB	IEEE 802.11n (HT Greenfield, 13.5 Mbps, BPSK)	X	5.15	67.30	16.58	0.00	150.0	± 9.6 %
		Y	5.15	67.30	16.63		150.0	
		Z	5.14	67.42	16.77		150.0	
10115-CAB	IEEE 802.11n (HT Greenfield, 81 Mbps, 16-QAM)	X	5.43	67.39	16.64	0.00	150.0	± 9.6 %
		Y	5.42	67.38	16.67		150.0	
		Z	5.40	67.47	16.80		150.0	
10116-CAB	IEEE 802.11n (HT Greenfield, 135 Mbps, 64-QAM)	X	5.24	67.48	16.60	0.00	150.0	± 9.6 %
		Y	5.24	67.48	16.64		150.0	
		Z	5.23	67.61	16.79		150.0	
10117-CAB	IEEE 802.11n (HT Mixed, 13.5 Mbps, BPSK)	X	5.11	67.13	16.52	0.00	150.0	± 9.6 %
		Y	5.11	67.14	16.56		150.0	
		Z	5.10	67.27	16.71		150.0	
10118-CAB	IEEE 802.11n (HT Mixed, 81 Mbps, 16-QAM)	X	5.51	67.61	16.75	0.00	150.0	± 9.6 %
		Y	5.50	67.59	16.78		150.0	
		Z	5.49	67.70	16.92		150.0	
10119-CAB	IEEE 802.11n (HT Mixed, 135 Mbps, 64-QAM)	X	5.22	67.43	16.59	0.00	150.0	± 9.6 %
		Y	5.22	67.44	16.64		150.0	
		Z	5.22	67.58	16.79		150.0	
10140-CAB	LTE-FDD (SC-FDMA, 100% RB, 15 MHz, 16-QAM)	X	3.41	67.69	16.16	0.00	150.0	± 9.6 %
		Y	3.41	67.71	16.21		150.0	
		Z	3.43	68.04	16.48		150.0	
10141-CAB	LTE-FDD (SC-FDMA, 100% RB, 15 MHz, 64-QAM)	X	3.54	67.80	16.34	0.00	150.0	± 9.6 %
		Y	3.53	67.79	16.37		150.0	
		Z	3.55	68.14	16.65		150.0	
10142-CAC	LTE-FDD (SC-FDMA, 100% RB, 3 MHz, QPSK)	X	2.07	69.48	16.32	0.00	150.0	± 9.6 %
		Y	2.08	69.63	16.40		150.0	
		Z	2.19	71.09	17.14		150.0	
10143-CAC	LTE-FDD (SC-FDMA, 100% RB, 3 MHz, 16-QAM)	X	2.59	69.85	16.34	0.00	150.0	± 9.6 %
		Y	2.56	69.73	16.26		150.0	
		Z	2.72	71.22	16.95		150.0	
10144-CAC	LTE-FDD (SC-FDMA, 100% RB, 3 MHz, 64-QAM)	X	2.28	67.06	14.48	0.00	150.0	± 9.6 %
		Y	2.28	67.11	14.48		150.0	
		Z	2.30	67.71	14.73		150.0	
10145-CAC	LTE-FDD (SC-FDMA, 100% RB, 1.4 MHz, QPSK)	X	1.27	65.80	12.14	0.00	150.0	± 9.6 %
		Y	1.24	65.55	11.92		150.0	
		Z	1.23	65.86	11.82		150.0	
10146-CAC	LTE-FDD (SC-FDMA, 100% RB, 1.4 MHz, 16-QAM)	X	1.88	66.06	11.48	0.00	150.0	± 9.6 %
		Y	1.67	64.97	10.86		150.0	
		Z	1.67	65.12	10.74		150.0	
10147-CAC	LTE-FDD (SC-FDMA, 100% RB, 1.4 MHz, 64-QAM)	X	2.26	68.28	12.67	0.00	150.0	± 9.6 %
		Y	1.93	66.66	11.83		150.0	
		Z	1.99	67.15	11.85		150.0	

10149-CAB	LTE-FDD (SC-FDMA, 50% RB, 20 MHz, 16-QAM)	X	2.94	67.72	16.15	0.00	150.0	± 9.6 %
		Y	2.94	67.74	16.19		150.0	
		Z	2.97	68.23	16.54		150.0	
10150-CAB	LTE-FDD (SC-FDMA, 50% RB, 20 MHz, 64-QAM)	X	3.06	67.71	16.20	0.00	150.0	± 9.6 %
		Y	3.06	67.71	16.23		150.0	
		Z	3.09	68.19	16.57		150.0	
10151-CAB	LTE-TDD (SC-FDMA, 50% RB, 20 MHz, QPSK)	X	6.50	77.16	20.86	3.98	65.0	± 9.6 %
		Y	6.55	78.17	21.66		65.0	
		Z	6.19	77.92	21.79		65.0	
10152-CAB	LTE-TDD (SC-FDMA, 50% RB, 20 MHz, 16-QAM)	X	5.79	73.13	19.64	3.98	65.0	± 9.6 %
		Y	5.69	73.50	20.13		65.0	
		Z	5.32	72.77	19.95		65.0	
10153-CAB	LTE-TDD (SC-FDMA, 50% RB, 20 MHz, 64-QAM)	X	6.18	74.17	20.46	3.98	65.0	± 9.6 %
		Y	6.05	74.42	20.89		65.0	
		Z	5.69	73.80	20.77		65.0	
10154-CAC	LTE-FDD (SC-FDMA, 50% RB, 10 MHz, QPSK)	X	2.34	69.77	16.87	0.00	150.0	± 9.6 %
		Y	2.34	69.84	16.94		150.0	
		Z	2.43	71.03	17.62		150.0	
10155-CAC	LTE-FDD (SC-FDMA, 50% RB, 10 MHz, 16-QAM)	X	2.68	68.80	16.54	0.00	150.0	± 9.6 %
		Y	2.67	68.76	16.52		150.0	
		Z	2.75	69.75	17.08		150.0	
10156-CAC	LTE-FDD (SC-FDMA, 50% RB, 5 MHz, QPSK)	X	1.93	69.76	16.18	0.00	150.0	± 9.6 %
		Y	1.94	69.87	16.23		150.0	
		Z	2.09	71.66	17.07		150.0	
10157-CAC	LTE-FDD (SC-FDMA, 50% RB, 5 MHz, 16-QAM)	X	2.14	67.84	14.60	0.00	150.0	± 9.6 %
		Y	2.14	67.85	14.57		150.0	
		Z	2.20	68.75	14.93		150.0	
10158-CAC	LTE-FDD (SC-FDMA, 50% RB, 10 MHz, 64-QAM)	X	2.84	68.99	16.70	0.00	150.0	± 9.6 %
		Y	2.82	68.92	16.66		150.0	
		Z	2.91	69.91	17.22		150.0	
10159-CAC	LTE-FDD (SC-FDMA, 50% RB, 5 MHz, 64-QAM)	X	2.27	68.38	14.92	0.00	150.0	± 9.6 %
		Y	2.25	68.31	14.84		150.0	
		Z	2.33	69.32	15.25		150.0	
10160-CAB	LTE-FDD (SC-FDMA, 50% RB, 15 MHz, QPSK)	X	2.81	69.14	16.68	0.00	150.0	± 9.6 %
		Y	2.82	69.26	16.78		150.0	
		Z	2.90	70.09	17.29		150.0	
10161-CAB	LTE-FDD (SC-FDMA, 50% RB, 15 MHz, 16-QAM)	X	2.96	67.68	16.14	0.00	150.0	± 9.6 %
		Y	2.96	67.69	16.16		150.0	
		Z	2.99	68.21	16.51		150.0	
10162-CAB	LTE-FDD (SC-FDMA, 50% RB, 15 MHz, 64-QAM)	X	3.07	67.84	16.25	0.00	150.0	± 9.6 %
		Y	3.07	67.84	16.27		150.0	
		Z	3.10	68.38	16.63		150.0	
10166-CAC	LTE-FDD (SC-FDMA, 50% RB, 1.4 MHz, QPSK)	X	3.55	69.57	19.24	3.01	150.0	± 9.6 %
		Y	3.42	69.08	19.08		150.0	
		Z	3.49	69.78	19.56		150.0	
10167-CAC	LTE-FDD (SC-FDMA, 50% RB, 1.4 MHz, 16-QAM)	X	4.35	72.56	19.73	3.01	150.0	± 9.6 %
		Y	4.05	71.65	19.43		150.0	
		Z	4.22	72.68	20.00		150.0	

10168-CAC	LTE-FDD (SC-FDMA, 50% RB, 1.4 MHz, 64-QAM)	X	4.91	75.25	21.27	3.01	150.0	± 9.6 %
		Y	4.47	73.83	20.75		150.0	
		Z	4.79	75.48	21.61		150.0	
10169-CAB	LTE-FDD (SC-FDMA, 1 RB, 20 MHz, QPSK)	X	2.92	68.85	18.96	3.01	150.0	± 9.6 %
		Y	2.73	67.79	18.55		150.0	
		Z	2.83	68.54	19.06		150.0	
10170-CAB	LTE-FDD (SC-FDMA, 1 RB, 20 MHz, 16-QAM)	X	4.06	75.33	21.58	3.01	150.0	± 9.6 %
		Y	3.46	72.72	20.60		150.0	
		Z	3.80	74.50	21.53		150.0	
10171-AAB	LTE-FDD (SC-FDMA, 1 RB, 20 MHz, 64-QAM)	X	3.26	70.67	18.53	3.01	150.0	± 9.6 %
		Y	2.94	69.29	18.08		150.0	
		Z	3.11	70.17	18.59		150.0	
10172-CAB	LTE-TDD (SC-FDMA, 1 RB, 20 MHz, QPSK)	X	5.95	83.50	25.23	6.02	65.0	± 9.6 %
		Y	5.65	84.20	26.22		65.0	
		Z	5.12	82.81	25.98		65.0	
10173-CAB	LTE-TDD (SC-FDMA, 1 RB, 20 MHz, 16-QAM)	X	11.62	92.06	26.25	6.02	65.0	± 9.6 %
		Y	11.01	93.45	27.47		65.0	
		Z	11.06	94.39	28.11		65.0	
10174-CAB	LTE-TDD (SC-FDMA, 1 RB, 20 MHz, 64-QAM)	X	7.57	84.01	23.07	6.02	65.0	± 9.6 %
		Y	7.52	85.77	24.36		65.0	
		Z	7.91	87.38	25.23		65.0	
10175-CAC	LTE-FDD (SC-FDMA, 1 RB, 10 MHz, QPSK)	X	2.88	68.52	18.69	3.01	150.0	± 9.6 %
		Y	2.70	67.54	18.33		150.0	
		Z	2.80	68.23	18.80		150.0	
10176-CAC	LTE-FDD (SC-FDMA, 1 RB, 10 MHz, 16-QAM)	X	4.07	75.35	21.59	3.01	150.0	± 9.6 %
		Y	3.47	72.75	20.61		150.0	
		Z	3.80	74.52	21.55		150.0	
10177-CAE	LTE-FDD (SC-FDMA, 1 RB, 5 MHz, QPSK)	X	2.91	68.68	18.79	3.01	150.0	± 9.6 %
		Y	2.72	67.66	18.41		150.0	
		Z	2.82	68.37	18.90		150.0	
10178-CAC	LTE-FDD (SC-FDMA, 1 RB, 5 MHz, 16-QAM)	X	4.02	75.10	21.46	3.01	150.0	± 9.6 %
		Y	3.44	72.58	20.52		150.0	
		Z	3.77	74.31	21.43		150.0	
10179-CAC	LTE-FDD (SC-FDMA, 1 RB, 10 MHz, 64-QAM)	X	3.62	72.84	19.91	3.01	150.0	± 9.6 %
		Y	3.18	70.96	19.24		150.0	
		Z	3.42	72.23	19.93		150.0	
10180-CAC	LTE-FDD (SC-FDMA, 1 RB, 5 MHz, 64-QAM)	X	3.25	70.60	18.48	3.01	150.0	± 9.6 %
		Y	2.93	69.24	18.05		150.0	
		Z	3.10	70.11	18.54		150.0	
10181-CAB	LTE-FDD (SC-FDMA, 1 RB, 15 MHz, QPSK)	X	2.90	68.66	18.78	3.01	150.0	± 9.6 %
		Y	2.72	67.65	18.41		150.0	
		Z	2.82	68.36	18.89		150.0	
10182-CAB	LTE-FDD (SC-FDMA, 1 RB, 15 MHz, 16-QAM)	X	4.01	75.07	21.45	3.01	150.0	± 9.6 %
		Y	3.44	72.56	20.51		150.0	
		Z	3.76	74.29	21.42		150.0	
10183-AAA	LTE-FDD (SC-FDMA, 1 RB, 15 MHz, 64-QAM)	X	3.25	70.57	18.47	3.01	150.0	± 9.6 %
		Y	2.93	69.22	18.04		150.0	
		Z	3.10	70.09	18.53		150.0	

10184-CAC	LTE-FDD (SC-FDMA, 1 RB, 3 MHz, QPSK)	X	2.91	68.71	18.81	3.01	150.0	± 9.6 %
		Y	2.73	67.69	18.43		150.0	
		Z	2.83	68.40	18.91		150.0	
10185-CAC	LTE-FDD (SC-FDMA, 1 RB, 3 MHz, 16-QAM)	X	4.03	75.16	21.49	3.01	150.0	± 9.6 %
		Y	3.45	72.63	20.54		150.0	
		Z	3.78	74.36	21.46		150.0	
10186-AAC	LTE-FDD (SC-FDMA, 1 RB, 3 MHz, 64-QAM)	X	3.26	70.64	18.50	3.01	150.0	± 9.6 %
		Y	2.94	69.28	18.07		150.0	
		Z	3.11	70.16	18.56		150.0	
10187-CAC	LTE-FDD (SC-FDMA, 1 RB, 1.4 MHz, QPSK)	X	2.92	68.76	18.87	3.01	150.0	± 9.6 %
		Y	2.74	67.73	18.49		150.0	
		Z	2.84	68.46	18.98		150.0	
10188-CAC	LTE-FDD (SC-FDMA, 1 RB, 1.4 MHz, 16-QAM)	X	4.18	75.92	21.92	3.01	150.0	± 9.6 %
		Y	3.54	73.16	20.87		150.0	
		Z	3.90	75.05	21.85		150.0	
10189-AAC	LTE-FDD (SC-FDMA, 1 RB, 1.4 MHz, 64-QAM)	X	3.34	71.10	18.80	3.01	150.0	± 9.6 %
		Y	3.00	69.64	18.32		150.0	
		Z	3.18	70.58	18.85		150.0	
10193-CAB	IEEE 802.11n (HT Greenfield, 6.5 Mbps, BPSK)	X	4.54	66.72	16.28	0.00	150.0	± 9.6 %
		Y	4.53	66.73	16.31		150.0	
		Z	4.52	66.90	16.47		150.0	
10194-CAB	IEEE 802.11n (HT Greenfield, 39 Mbps, 16-QAM)	X	4.70	67.02	16.41	0.00	150.0	± 9.6 %
		Y	4.70	67.03	16.44		150.0	
		Z	4.68	67.19	16.60		150.0	
10195-CAB	IEEE 802.11n (HT Greenfield, 65 Mbps, 64-QAM)	X	4.75	67.05	16.42	0.00	150.0	± 9.6 %
		Y	4.74	67.06	16.46		150.0	
		Z	4.72	67.21	16.61		150.0	
10196-CAB	IEEE 802.11n (HT Mixed, 6.5 Mbps, BPSK)	X	4.54	66.78	16.30	0.00	150.0	± 9.6 %
		Y	4.53	66.78	16.33		150.0	
		Z	4.52	66.94	16.48		150.0	
10197-CAB	IEEE 802.11n (HT Mixed, 39 Mbps, 16-QAM)	X	4.72	67.04	16.42	0.00	150.0	± 9.6 %
		Y	4.71	67.05	16.45		150.0	
		Z	4.69	67.20	16.61		150.0	
10198-CAB	IEEE 802.11n (HT Mixed, 65 Mbps, 64-QAM)	X	4.75	67.07	16.43	0.00	150.0	± 9.6 %
		Y	4.74	67.08	16.47		150.0	
		Z	4.72	67.23	16.62		150.0	
10219-CAB	IEEE 802.11n (HT Mixed, 7.2 Mbps, BPSK)	X	4.49	66.80	16.26	0.00	150.0	± 9.6 %
		Y	4.48	66.80	16.29		150.0	
		Z	4.47	66.97	16.45		150.0	
10220-CAB	IEEE 802.11n (HT Mixed, 43.3 Mbps, 16-QAM)	X	4.71	67.01	16.41	0.00	150.0	± 9.6 %
		Y	4.70	67.01	16.44		150.0	
		Z	4.69	67.17	16.59		150.0	
10221-CAB	IEEE 802.11n (HT Mixed, 72.2 Mbps, 64-QAM)	X	4.75	67.00	16.42	0.00	150.0	± 9.6 %
		Y	4.75	67.00	16.45		150.0	
		Z	4.73	67.15	16.60		150.0	
10222-CAB	IEEE 802.11n (HT Mixed, 15 Mbps, BPSK)	X	5.09	67.14	16.52	0.00	150.0	± 9.6 %
		Y	5.08	67.14	16.56		150.0	
		Z	5.08	67.27	16.70		150.0	



10223-CAB	IEEE 802.11n (HT Mixed, 90 Mbps, 16-QAM)	X	5.39	67.38	16.65	0.00	150.0	± 9.6 %
		Y	5.40	67.41	16.71		150.0	
		Z	5.38	67.51	16.84		150.0	
10224-CAB	IEEE 802.11n (HT Mixed, 150 Mbps, 64-QAM)	X	5.13	67.26	16.50	0.00	150.0	± 9.6 %
		Y	5.13	67.26	16.54		150.0	
		Z	5.12	67.38	16.69		150.0	
10225-CAB	UMTS-FDD (HSPA+)	X	2.82	66.39	15.53	0.00	150.0	± 9.6 %
		Y	2.82	66.41	15.53		150.0	
		Z	2.83	66.83	15.79		150.0	
10226-CAA	LTE-TDD (SC-FDMA, 1 RB, 1.4 MHz, 16-QAM)	X	12.49	93.43	26.78	6.02	65.0	± 9.6 %
		Y	11.71	94.68	27.95		65.0	
		Z	11.90	95.87	28.68		65.0	
10227-CAA	LTE-TDD (SC-FDMA, 1 RB, 1.4 MHz, 64-QAM)	X	11.53	90.72	25.29	6.02	65.0	± 9.6 %
		Y	11.27	92.54	26.61		65.0	
		Z	11.90	94.43	27.56		65.0	
10228-CAA	LTE-TDD (SC-FDMA, 1 RB, 1.4 MHz, QPSK)	X	8.42	90.34	27.70	6.02	65.0	± 9.6 %
		Y	7.81	90.91	28.68		65.0	
		Z	6.96	89.44	28.50		65.0	
10229-CAB	LTE-TDD (SC-FDMA, 1 RB, 3 MHz, 16-QAM)	X	11.71	92.18	26.29	6.02	65.0	± 9.6 %
		Y	11.09	93.54	27.50		65.0	
		Z	11.14	94.50	28.15		65.0	
10230-CAB	LTE-TDD (SC-FDMA, 1 RB, 3 MHz, 64-QAM)	X	10.81	89.56	24.84	6.02	65.0	± 9.6 %
		Y	10.61	91.43	26.18		65.0	
		Z	11.06	93.05	27.04		65.0	
10231-CAB	LTE-TDD (SC-FDMA, 1 RB, 3 MHz, QPSK)	X	8.03	89.35	27.28	6.02	65.0	± 9.6 %
		Y	7.50	90.03	28.30		65.0	
		Z	6.67	88.48	28.08		65.0	
10232-CAB	LTE-TDD (SC-FDMA, 1 RB, 5 MHz, 16-QAM)	X	11.69	92.16	26.29	6.02	65.0	± 9.6 %
		Y	11.07	93.53	27.50		65.0	
		Z	11.12	94.48	28.15		65.0	
10233-CAB	LTE-TDD (SC-FDMA, 1 RB, 5 MHz, 64-QAM)	X	10.78	89.54	24.84	6.02	65.0	± 9.6 %
		Y	10.59	91.41	26.17		65.0	
		Z	11.02	93.02	27.03		65.0	
10234-CAB	LTE-TDD (SC-FDMA, 1 RB, 5 MHz, QPSK)	X	7.71	88.43	26.85	6.02	65.0	± 9.6 %
		Y	7.25	89.24	27.91		65.0	
		Z	6.44	87.67	27.67		65.0	
10235-CAB	LTE-TDD (SC-FDMA, 1 RB, 10 MHz, 16-QAM)	X	11.70	92.19	26.30	6.02	65.0	± 9.6 %
		Y	11.08	93.57	27.51		65.0	
		Z	11.13	94.52	28.16		65.0	
10236-CAB	LTE-TDD (SC-FDMA, 1 RB, 10 MHz, 64-QAM)	X	10.89	89.67	24.87	6.02	65.0	± 9.6 %
		Y	10.72	91.59	26.22		65.0	
		Z	11.17	93.20	27.09		65.0	
10237-CAB	LTE-TDD (SC-FDMA, 1 RB, 10 MHz, QPSK)	X	8.04	89.41	27.30	6.02	65.0	± 9.6 %
		Y	7.51	90.10	28.33		65.0	
		Z	6.67	88.54	28.10		65.0	
10238-CAB	LTE-TDD (SC-FDMA, 1 RB, 15 MHz, 16-QAM)	X	11.66	92.13	26.28	6.02	65.0	± 9.6 %
		Y	11.04	93.51	27.49		65.0	
		Z	11.09	94.46	28.14		65.0	

10239-CAB	LTE-TDD (SC-FDMA, 1 RB, 15 MHz, 64-QAM)	X	10.75	89.50	24.83	6.02	65.0	± 9.6 %
		Y	10.55	91.38	26.16		65.0	
		Z	10.98	92.98	27.02		65.0	
10240-CAB	LTE-TDD (SC-FDMA, 1 RB, 15 MHz, QPSK)	X	8.01	89.36	27.28	6.02	65.0	± 9.6 %
		Y	7.49	90.05	28.31		65.0	
		Z	6.65	88.49	28.09		65.0	
10241-CAA	LTE-TDD (SC-FDMA, 50% RB, 1.4 MHz, 16-QAM)	X	7.90	80.25	24.70	6.98	65.0	± 9.6 %
		Y	7.54	80.27	25.14		65.0	
		Z	7.32	80.00	25.13		65.0	
10242-CAA	LTE-TDD (SC-FDMA, 50% RB, 1.4 MHz, 64-QAM)	X	6.79	77.13	23.31	6.98	65.0	± 9.6 %
		Y	6.61	77.45	23.86		65.0	
		Z	6.47	77.37	23.92		65.0	
10243-CAA	LTE-TDD (SC-FDMA, 50% RB, 1.4 MHz, QPSK)	X	5.57	73.90	22.78	6.98	65.0	± 9.6 %
		Y	5.47	74.26	23.34		65.0	
		Z	5.29	73.86	23.25		65.0	
10244-CAB	LTE-TDD (SC-FDMA, 50% RB, 3 MHz, 16-QAM)	X	5.21	73.03	16.87	3.98	65.0	± 9.6 %
		Y	5.09	73.51	17.30		65.0	
		Z	5.03	73.92	17.50		65.0	
10245-CAB	LTE-TDD (SC-FDMA, 50% RB, 3 MHz, 64-QAM)	X	5.11	72.49	16.59	3.98	65.0	± 9.6 %
		Y	4.96	72.88	16.98		65.0	
		Z	4.87	73.13	17.10		65.0	
10246-CAB	LTE-TDD (SC-FDMA, 50% RB, 3 MHz, QPSK)	X	4.91	75.48	18.15	3.98	65.0	± 9.6 %
		Y	5.27	77.64	19.36		65.0	
		Z	5.10	77.97	19.55		65.0	
10247-CAB	LTE-TDD (SC-FDMA, 50% RB, 5 MHz, 16-QAM)	X	4.83	72.50	17.62	3.98	65.0	± 9.6 %
		Y	4.81	73.23	18.21		65.0	
		Z	4.54	72.95	18.13		65.0	
10248-CAB	LTE-TDD (SC-FDMA, 50% RB, 5 MHz, 64-QAM)	X	4.83	72.02	17.40	3.98	65.0	± 9.6 %
		Y	4.80	72.67	17.95		65.0	
		Z	4.50	72.24	17.79		65.0	
10249-CAB	LTE-TDD (SC-FDMA, 50% RB, 5 MHz, QPSK)	X	6.13	79.13	20.55	3.98	65.0	± 9.6 %
		Y	6.59	81.48	21.84		65.0	
		Z	6.42	82.04	22.21		65.0	
10250-CAB	LTE-TDD (SC-FDMA, 50% RB, 10 MHz, 16-QAM)	X	5.84	75.38	20.54	3.98	65.0	± 9.6 %
		Y	5.73	75.80	21.05		65.0	
		Z	5.41	75.46	21.07		65.0	
10251-CAB	LTE-TDD (SC-FDMA, 50% RB, 10 MHz, 64-QAM)	X	5.56	73.33	19.31	3.98	65.0	± 9.6 %
		Y	5.48	73.81	19.83		65.0	
		Z	5.13	73.20	19.67		65.0	
10252-CAB	LTE-TDD (SC-FDMA, 50% RB, 10 MHz, QPSK)	X	6.58	79.52	21.71	3.98	65.0	± 9.6 %
		Y	6.77	81.11	22.75		65.0	
		Z	6.42	81.09	22.98		65.0	
10253-CAB	LTE-TDD (SC-FDMA, 50% RB, 15 MHz, 16-QAM)	X	5.68	72.66	19.41	3.98	65.0	± 9.6 %
		Y	5.58	72.99	19.88		65.0	
		Z	5.23	72.31	19.69		65.0	
10254-CAB	LTE-TDD (SC-FDMA, 50% RB, 15 MHz, 64-QAM)	X	6.04	73.60	20.14	3.98	65.0	± 9.6 %
		Y	5.91	73.85	20.56		65.0	
		Z	5.56	73.24	20.42		65.0	

10255-CAB	LTE-TDD (SC-FDMA, 50% RB, 15 MHz, QPSK)	X	6.23	76.59	20.84	3.98	65.0	± 9.6 %
		Y	6.24	77.48	21.59		65.0	
		Z	5.87	77.13	21.66		65.0	
10256-CAA	LTE-TDD (SC-FDMA, 100% RB, 1.4 MHz, 16-QAM)	X	3.95	68.92	13.98	3.98	65.0	± 9.6 %
		Y	3.82	69.23	14.29		65.0	
		Z	3.62	68.96	14.12		65.0	
10257-CAA	LTE-TDD (SC-FDMA, 100% RB, 1.4 MHz, 64-QAM)	X	3.87	68.34	13.61	3.98	65.0	± 9.6 %
		Y	3.72	68.54	13.87		65.0	
		Z	3.50	68.15	13.62		65.0	
10258-CAA	LTE-TDD (SC-FDMA, 100% RB, 1.4 MHz, QPSK)	X	3.64	70.79	15.29	3.98	65.0	± 9.6 %
		Y	3.77	72.19	16.18		65.0	
		Z	3.49	71.75	15.95		65.0	
10259-CAB	LTE-TDD (SC-FDMA, 100% RB, 3 MHz, 16-QAM)	X	5.23	73.61	18.69	3.98	65.0	± 9.6 %
		Y	5.19	74.27	19.27		65.0	
		Z	4.91	74.00	19.24		65.0	
10260-CAB	LTE-TDD (SC-FDMA, 100% RB, 3 MHz, 64-QAM)	X	5.26	73.37	18.60	3.98	65.0	± 9.6 %
		Y	5.21	73.96	19.14		65.0	
		Z	4.92	73.65	19.08		65.0	
10261-CAB	LTE-TDD (SC-FDMA, 100% RB, 3 MHz, QPSK)	X	6.03	78.54	20.75	3.98	65.0	± 9.6 %
		Y	6.30	80.40	21.88		65.0	
		Z	6.03	80.58	22.14		65.0	
10262-CAB	LTE-TDD (SC-FDMA, 100% RB, 5 MHz, 16-QAM)	X	5.82	75.32	20.49	3.98	65.0	± 9.6 %
		Y	5.71	75.75	21.01		65.0	
		Z	5.40	75.40	21.02		65.0	
10263-CAB	LTE-TDD (SC-FDMA, 100% RB, 5 MHz, 64-QAM)	X	5.55	73.31	19.30	3.98	65.0	± 9.6 %
		Y	5.47	73.78	19.82		65.0	
		Z	5.12	73.17	19.66		65.0	
10264-CAB	LTE-TDD (SC-FDMA, 100% RB, 5 MHz, QPSK)	X	6.52	79.33	21.61	3.98	65.0	± 9.6 %
		Y	6.71	80.91	22.65		65.0	
		Z	6.35	80.86	22.87		65.0	
10265-CAB	LTE-TDD (SC-FDMA, 100% RB, 10 MHz, 16-QAM)	X	5.79	73.14	19.64	3.98	65.0	± 9.6 %
		Y	5.69	73.51	20.14		65.0	
		Z	5.32	72.78	19.95		65.0	
10266-CAB	LTE-TDD (SC-FDMA, 100% RB, 10 MHz, 64-QAM)	X	6.18	74.15	20.45	3.98	65.0	± 9.6 %
		Y	6.05	74.41	20.88		65.0	
		Z	5.69	73.79	20.76		65.0	
10267-CAB	LTE-TDD (SC-FDMA, 100% RB, 10 MHz, QPSK)	X	6.49	77.12	20.84	3.98	65.0	± 9.6 %
		Y	6.54	78.13	21.64		65.0	
		Z	6.18	77.88	21.77		65.0	
10268-CAB	LTE-TDD (SC-FDMA, 100% RB, 15 MHz, 16-QAM)	X	6.44	73.19	20.11	3.98	65.0	± 9.6 %
		Y	6.30	73.36	20.48		65.0	
		Z	5.93	72.66	20.31		65.0	
10269-CAB	LTE-TDD (SC-FDMA, 100% RB, 15 MHz, 64-QAM)	X	6.42	72.82	20.00	3.98	65.0	± 9.6 %
		Y	6.28	72.95	20.36		65.0	
		Z	5.92	72.25	20.17		65.0	
10270-CAB	LTE-TDD (SC-FDMA, 100% RB, 15 MHz, QPSK)	X	6.44	74.85	20.10	3.98	65.0	± 9.6 %
		Y	6.37	75.35	20.65		65.0	
		Z	6.04	74.97	20.69		65.0	

10274-CAB	UMTS-FDD (HSUPA, Subtest 5, 3GPP Rel8.10)	X	2.62	66.84	15.50	0.00	150.0	± 9.6 %
		Y	2.63	66.93	15.55		150.0	
		Z	2.67	67.49	15.87		150.0	
10275-CAB	UMTS-FDD (HSUPA, Subtest 5, 3GPP Rel8.4)	X	1.68	68.72	16.12	0.00	150.0	± 9.6 %
		Y	1.71	69.00	16.29		150.0	
		Z	1.81	70.46	17.10		150.0	
10277-CAA	PHS (QPSK)	X	2.43	61.92	7.59	9.03	50.0	± 9.6 %
		Y	2.33	61.95	7.56		50.0	
		Z	2.26	61.71	7.35		50.0	
10278-CAA	PHS (QPSK, BW 884MHz, Rolloff 0.5)	X	4.24	69.71	14.12	9.03	50.0	± 9.6 %
		Y	4.66	71.76	15.19		50.0	
		Z	4.46	71.07	14.77		50.0	
10279-CAA	PHS (QPSK, BW 884MHz, Rolloff 0.38)	X	4.35	69.97	14.29	9.03	50.0	± 9.6 %
		Y	4.80	72.06	15.37		50.0	
		Z	4.58	71.36	14.95		50.0	
10290-AAB	CDMA2000, RC1, SO55, Full Rate	X	1.60	70.39	14.75	0.00	150.0	± 9.6 %
		Y	1.61	70.49	14.74		150.0	
		Z	1.93	73.32	15.74		150.0	
10291-AAB	CDMA2000, RC3, SO55, Full Rate	X	0.91	67.29	13.28	0.00	150.0	± 9.6 %
		Y	0.92	67.56	13.36		150.0	
		Z	1.08	70.23	14.41		150.0	
10292-AAB	CDMA2000, RC3, SO32, Full Rate	X	1.42	74.36	16.84	0.00	150.0	± 9.6 %
		Y	1.48	74.91	17.00		150.0	
		Z	3.55	87.27	21.16		150.0	
10293-AAB	CDMA2000, RC3, SO3, Full Rate	X	3.62	88.12	22.29	0.00	150.0	± 9.6 %
		Y	3.58	87.83	22.13		150.0	
		Z	100.00	135.26	33.90		150.0	
10295-AAB	CDMA2000, RC1, SO3, 1/8th Rate 25 fr.	X	8.20	81.18	21.75	9.03	50.0	± 9.6 %
		Y	10.64	86.73	24.13		50.0	
		Z	12.84	89.68	24.96		50.0	
10297-AAA	LTE-FDD (SC-FDMA, 50% RB, 20 MHz, QPSK)	X	2.82	70.21	17.01	0.00	150.0	± 9.6 %
		Y	2.82	70.27	17.09		150.0	
		Z	2.91	71.19	17.66		150.0	
10298-AAB	LTE-FDD (SC-FDMA, 50% RB, 3 MHz, QPSK)	X	1.65	68.70	14.63	0.00	150.0	± 9.6 %
		Y	1.64	68.66	14.56		150.0	
		Z	1.76	70.23	15.17		150.0	
10299-AAB	LTE-FDD (SC-FDMA, 50% RB, 3 MHz, 16-QAM)	X	2.68	70.13	14.45	0.00	150.0	± 9.6 %
		Y	2.37	68.79	13.81		150.0	
		Z	2.65	70.42	14.42		150.0	
10300-AAB	LTE-FDD (SC-FDMA, 50% RB, 3 MHz, 64-QAM)	X	1.90	64.95	11.24	0.00	150.0	± 9.6 %
		Y	1.75	64.29	10.86		150.0	
		Z	1.76	64.50	10.83		150.0	
10301-AAA	IEEE 802.16e WiMAX (29:18, 5ms, 10MHz, QPSK, PUSC)	X	4.84	65.14	17.34	4.17	50.0	± 9.6 %
		Y	4.73	65.58	17.60		50.0	
		Z	4.89	65.68	17.65		50.0	
10302-AAA	IEEE 802.16e WiMAX (29:18, 5ms, 10MHz, QPSK, PUSC, 3 CTRL symbols)	X	5.17	65.96	18.16	4.96	50.0	± 9.6 %
		Y	5.23	66.31	18.39		50.0	
		Z	5.17	66.24	18.33		50.0	

10303-AAA	IEEE 802.16e WiMAX (31:15, 5ms, 10MHz, 64QAM, PUSC)	X	4.92	65.61	17.99	4.96	50.0	± 9.6 %
		Y	4.98	65.95	18.22		50.0	
		Z	4.92	65.88	18.15		50.0	
10304-AAA	IEEE 802.16e WiMAX (29:18, 5ms, 10MHz, 64QAM, PUSC)	X	4.73	65.49	17.50	4.17	50.0	± 9.6 %
		Y	4.78	65.79	17.69		50.0	
		Z	4.73	65.79	17.68		50.0	
10305-AAA	IEEE 802.16e WiMAX (31:15, 10ms, 10MHz, 64QAM, PUSC, 15 symbols)	X	4.47	67.82	19.70	6.02	35.0	± 9.6 %
		Y	4.53	68.38	20.07		35.0	
		Z	4.52	68.50	19.97		35.0	
10306-AAA	IEEE 802.16e WiMAX (29:18, 10ms, 10MHz, 64QAM, PUSC, 18 symbols)	X	4.73	66.58	19.19	6.02	35.0	± 9.6 %
		Y	4.78	67.05	19.51		35.0	
		Z	4.76	67.13	19.45		35.0	
10307-AAA	IEEE 802.16e WiMAX (29:18, 10ms, 10MHz, QPSK, PUSC, 18 symbols)	X	4.64	66.81	19.18	6.02	35.0	± 9.6 %
		Y	4.69	67.25	19.50		35.0	
		Z	4.66	67.32	19.43		35.0	
10308-AAA	IEEE 802.16e WiMAX (29:18, 10ms, 10MHz, 16QAM, PUSC)	X	4.62	67.03	19.33	6.02	35.0	± 9.6 %
		Y	4.67	67.50	19.67		35.0	
		Z	4.65	67.57	19.60		35.0	
10309-AAA	IEEE 802.16e WiMAX (29:18, 10ms, 10MHz, 16QAM, AMC 2x3, 18 symbols)	X	4.78	66.78	19.32	6.02	35.0	± 9.6 %
		Y	4.83	67.26	19.66		35.0	
		Z	4.80	67.31	19.58		35.0	
10310-AAA	IEEE 802.16e WiMAX (29:18, 10ms, 10MHz, QPSK, AMC 2x3, 18 symbols)	X	4.68	66.68	19.18	6.02	35.0	± 9.6 %
		Y	4.73	67.14	19.51		35.0	
		Z	4.71	67.23	19.45		35.0	
10311-AAA	LTE-FDD (SC-FDMA, 100% RB, 15 MHz, QPSK)	X	3.19	69.45	16.63	0.00	150.0	± 9.6 %
		Y	3.19	69.47	16.68		150.0	
		Z	3.28	70.27	17.19		150.0	
10313-AAA	iDEN 1:3	X	3.39	71.53	15.33	6.99	70.0	± 9.6 %
		Y	3.84	74.67	17.07		70.0	
		Z	3.68	75.32	17.59		70.0	
10314-AAA	iDEN 1:6	X	4.74	77.93	20.58	10.00	30.0	± 9.6 %
		Y	5.68	82.49	22.80		30.0	
		Z	7.59	87.95	24.84		30.0	
10315-AAB	IEEE 802.11b WiFi 2.4 GHz (DSSS, 1 Mbps, 96pc duty cycle)	X	1.10	64.08	15.50	0.17	150.0	± 9.6 %
		Y	1.11	64.14	15.63		150.0	
		Z	1.11	64.76	16.23		150.0	
10316-AAB	IEEE 802.11g WiFi 2.4 GHz (ERP-OFDM, 6 Mbps, 96pc duty cycle)	X	4.57	66.68	16.34	0.17	150.0	± 9.6 %
		Y	4.58	66.73	16.42		150.0	
		Z	4.56	66.88	16.57		150.0	
10317-AAB	IEEE 802.11a WiFi 5 GHz (OFDM, 6 Mbps, 96pc duty cycle)	X	4.57	66.68	16.34	0.17	150.0	± 9.6 %
		Y	4.58	66.73	16.42		150.0	
		Z	4.56	66.88	16.57		150.0	
10400-AAC	IEEE 802.11ac WiFi (20MHz, 64-QAM, 99pc duty cycle)	X	4.69	67.07	16.39	0.00	150.0	± 9.6 %
		Y	4.69	67.09	16.44		150.0	
		Z	4.66	67.23	16.59		150.0	
10401-AAC	IEEE 802.11ac WiFi (40MHz, 64-QAM, 99pc duty cycle)	X	5.41	67.27	16.57	0.00	150.0	± 9.6 %
		Y	5.42	67.32	16.64		150.0	
		Z	5.42	67.46	16.78		150.0	

10402-AAC	IEEE 802.11ac WiFi (80MHz, 64-QAM, 99pc duty cycle)	X	5.65	67.51	16.55	0.00	150.0	± 9.6 %
		Y	5.65	67.50	16.58		150.0	
		Z	5.64	67.58	16.71		150.0	
10403-AAB	CDMA2000 (1xEV-DO, Rev. 0)	X	1.60	70.39	14.75	0.00	115.0	± 9.6 %
		Y	1.61	70.49	14.74		115.0	
		Z	1.93	73.32	15.74		115.0	
10404-AAB	CDMA2000 (1xEV-DO, Rev. A)	X	1.60	70.39	14.75	0.00	115.0	± 9.6 %
		Y	1.61	70.49	14.74		115.0	
		Z	1.93	73.32	15.74		115.0	
10406-AAB	CDMA2000, RC3, SO32, SCH0, Full Rate	X	100.00	123.00	30.86	0.00	100.0	± 9.6 %
		Y	77.31	122.16	31.13		100.0	
		Z	100.00	125.97	32.12		100.0	
10410-AAA	LTE-TDD (SC-FDMA, 1 RB, 10 MHz, QPSK, UL Subframe=2,3,4,7,8,9)	X	26.89	103.16	25.36	3.23	80.0	± 9.6 %
		Y	65.26	118.95	30.06		80.0	
		Z	100.00	128.22	32.85		80.0	
10415-AAA	IEEE 802.11b WiFi 2.4 GHz (DSSS, 1 Mbps, 99pc duty cycle)	X	1.03	63.36	15.05	0.00	150.0	± 9.6 %
		Y	1.04	63.45	15.15		150.0	
		Z	1.05	64.09	15.75		150.0	
10416-AAA	IEEE 802.11g WiFi 2.4 GHz (ERP-OFDM, 6 Mbps, 99pc duty cycle)	X	4.54	66.76	16.35	0.00	150.0	± 9.6 %
		Y	4.53	66.77	16.39		150.0	
		Z	4.52	66.93	16.54		150.0	
10417-AAA	IEEE 802.11a/h WiFi 5 GHz (OFDM, 6 Mbps, 99pc duty cycle)	X	4.54	66.76	16.35	0.00	150.0	± 9.6 %
		Y	4.53	66.77	16.39		150.0	
		Z	4.52	66.93	16.54		150.0	
10418-AAA	IEEE 802.11g WiFi 2.4 GHz (DSSS-OFDM, 6 Mbps, 99pc duty cycle, Long preamble)	X	4.53	66.93	16.38	0.00	150.0	± 9.6 %
		Y	4.53	66.94	16.42		150.0	
		Z	4.52	67.12	16.59		150.0	
10419-AAA	IEEE 802.11g WiFi 2.4 GHz (DSSS-OFDM, 6 Mbps, 99pc duty cycle, Short preamble)	X	4.55	66.87	16.38	0.00	150.0	± 9.6 %
		Y	4.55	66.88	16.41		150.0	
		Z	4.53	67.06	16.58		150.0	
10422-AAA	IEEE 802.11n (HT Greenfield, 7.2 Mbps, BPSK)	X	4.66	66.86	16.38	0.00	150.0	± 9.6 %
		Y	4.66	66.87	16.42		150.0	
		Z	4.64	67.03	16.58		150.0	
10423-AAA	IEEE 802.11n (HT Greenfield, 43.3 Mbps, 16-QAM)	X	4.82	67.16	16.49	0.00	150.0	± 9.6 %
		Y	4.81	67.17	16.53		150.0	
		Z	4.79	67.32	16.68		150.0	
10424-AAA	IEEE 802.11n (HT Greenfield, 72.2 Mbps, 64-QAM)	X	4.75	67.12	16.47	0.00	150.0	± 9.6 %
		Y	4.74	67.13	16.51		150.0	
		Z	4.72	67.28	16.66		150.0	
10425-AAA	IEEE 802.11n (HT Greenfield, 15 Mbps, BPSK)	X	5.35	67.40	16.64	0.00	150.0	± 9.6 %
		Y	5.35	67.39	16.67		150.0	
		Z	5.34	67.51	16.82		150.0	
10426-AAA	IEEE 802.11n (HT Greenfield, 90 Mbps, 16-QAM)	X	5.37	67.46	16.66	0.00	150.0	± 9.6 %
		Y	5.37	67.48	16.72		150.0	
		Z	5.37	67.63	16.87		150.0	

10427-AAA	IEEE 802.11n (HT Greenfield, 150 Mbps, 64-QAM)	X	5.37	67.41	16.64	0.00	150.0	± 9.6 %
		Y	5.37	67.41	16.68		150.0	
		Z	5.36	67.51	16.81		150.0	
10430-AAA	LTE-FDD (OFDMA, 5 MHz, E-TM 3.1)	X	4.40	71.78	18.71	0.00	150.0	± 9.6 %
		Y	4.28	71.24	18.39		150.0	
		Z	4.51	72.71	19.15		150.0	
10431-AAA	LTE-FDD (OFDMA, 10 MHz, E-TM 3.1)	X	4.21	67.36	16.36	0.00	150.0	± 9.6 %
		Y	4.20	67.38	16.38		150.0	
		Z	4.19	67.63	16.57		150.0	
10432-AAA	LTE-FDD (OFDMA, 15 MHz, E-TM 3.1)	X	4.51	67.19	16.42	0.00	150.0	± 9.6 %
		Y	4.51	67.21	16.46		150.0	
		Z	4.49	67.40	16.63		150.0	
10433-AAA	LTE-FDD (OFDMA, 20 MHz, E-TM 3.1)	X	4.76	67.15	16.49	0.00	150.0	± 9.6 %
		Y	4.75	67.16	16.53		150.0	
		Z	4.74	67.31	16.68		150.0	
10434-AAA	W-CDMA (BS Test Model 1, 64 DPCH)	X	4.57	72.88	18.75	0.00	150.0	± 9.6 %
		Y	4.41	72.21	18.37		150.0	
		Z	4.74	74.03	19.23		150.0	
10435-AAA	LTE-TDD (SC-FDMA, 1 RB, 20 MHz, QPSK, UL Subframe=2,3,4,7,8,9)	X	23.98	101.49	24.88	3.23	80.0	± 9.6 %
		Y	57.01	116.87	29.52		80.0	
		Z	100.00	127.95	32.72		80.0	
10447-AAA	LTE-FDD (OFDMA, 5 MHz, E-TM 3.1, Clipping 44%)	X	3.51	67.45	15.67	0.00	150.0	± 9.6 %
		Y	3.50	67.46	15.66		150.0	
		Z	3.50	67.83	15.84		150.0	
10448-AAA	LTE-FDD (OFDMA, 10 MHz, E-TM 3.1, Clipping 44%)	X	4.06	67.15	16.22	0.00	150.0	± 9.6 %
		Y	4.05	67.16	16.25		150.0	
		Z	4.04	67.42	16.44		150.0	
10449-AAA	LTE-FDD (OFDMA, 15 MHz, E-TM 3.1, Clipping 44%)	X	4.33	67.03	16.33	0.00	150.0	± 9.6 %
		Y	4.33	67.04	16.36		150.0	
		Z	4.32	67.24	16.54		150.0	
10450-AAA	LTE-FDD (OFDMA, 20 MHz, E-TM 3.1, Clipping 44%)	X	4.53	66.93	16.35	0.00	150.0	± 9.6 %
		Y	4.53	66.93	16.39		150.0	
		Z	4.51	67.10	16.55		150.0	
10451-AAA	W-CDMA (BS Test Model 1, 64 DPCH, Clipping 44%)	X	3.40	67.62	15.26	0.00	150.0	± 9.6 %
		Y	3.38	67.60	15.22		150.0	
		Z	3.37	67.97	15.37		150.0	
10456-AAA	IEEE 802.11ac WiFi (160MHz, 64-QAM, 99pc duty cycle)	X	6.23	67.93	16.78	0.00	150.0	± 9.6 %
		Y	6.24	67.95	16.83		150.0	
		Z	6.26	68.10	16.98		150.0	
10457-AAA	UMTS-FDD (DC-HSDPA)	X	3.80	65.40	16.06	0.00	150.0	± 9.6 %
		Y	3.81	65.41	16.10		150.0	
		Z	3.81	65.58	16.26		150.0	
10458-AAA	CDMA2000 (1xEV-DO, Rev. B, 2 carriers)	X	3.20	66.84	14.56	0.00	150.0	± 9.6 %
		Y	3.18	66.85	14.53		150.0	
		Z	3.14	67.02	14.51		150.0	
10459-AAA	CDMA2000 (1xEV-DO, Rev. B, 3 carriers)	X	4.34	65.37	15.67	0.00	150.0	± 9.6 %
		Y	4.35	65.51	15.73		150.0	
		Z	4.29	65.59	15.73		150.0	



10460-AAA	UMTS-FDD (WCDMA, AMR)	X	0.97	69.65	17.12	0.00	150.0	± 9.6 %
		Y	1.01	70.19	17.44		150.0	
		Z	1.16	73.58	19.25		150.0	
10461-AAA	LTE-TDD (SC-FDMA, 1 RB, 1.4 MHz, QPSK, UL Subframe=2,3,4,7,8,9)	X	13.01	96.24	24.46	3.29	80.0	± 9.6 %
		Y	25.30	108.79	28.60		80.0	
		Z	100.00	132.41	34.87		80.0	
10462-AAA	LTE-TDD (SC-FDMA, 1 RB, 1.4 MHz, 16-QAM, UL Subframe=2,3,4,7,8,9)	X	1.27	62.76	9.64	3.23	80.0	± 9.6 %
		Y	1.56	65.80	11.40		80.0	
		Z	3.78	75.24	15.16		80.0	
10463-AAA	LTE-TDD (SC-FDMA, 1 RB, 1.4 MHz, 64-QAM, UL Subframe=2,3,4,7,8,9)	X	0.98	60.10	7.84	3.23	80.0	± 9.6 %
		Y	1.03	61.37	8.81		80.0	
		Z	1.26	63.57	10.06		80.0	
10464-AAA	LTE-TDD (SC-FDMA, 1 RB, 3 MHz, QPSK, UL Subframe=2,3,4,7,8,9)	X	8.77	89.81	21.97	3.23	80.0	± 9.6 %
		Y	21.26	104.54	26.77		80.0	
		Z	100.00	129.51	33.34		80.0	
10465-AAA	LTE-TDD (SC-FDMA, 1 RB, 3 MHz, 16-QAM, UL Subframe=2,3,4,7,8,9)	X	1.19	62.09	9.26	3.23	80.0	± 9.6 %
		Y	1.37	64.51	10.77		80.0	
		Z	2.42	70.65	13.49		80.0	
10466-AAA	LTE-TDD (SC-FDMA, 1 RB, 3 MHz, 64-QAM, UL Subframe=2,3,4,7,8,9)	X	0.97	60.00	7.74	3.23	80.0	± 9.6 %
		Y	0.98	60.87	8.50		80.0	
		Z	1.14	62.59	9.55		80.0	
10467-AAA	LTE-TDD (SC-FDMA, 1 RB, 5 MHz, QPSK, UL Subframe=2,3,4,7,8,9)	X	10.05	91.68	22.54	3.23	80.0	± 9.6 %
		Y	25.94	107.42	27.53		80.0	
		Z	100.00	129.89	33.51		80.0	
10468-AAA	LTE-TDD (SC-FDMA, 1 RB, 5 MHz, 16-QAM, UL Subframe=2,3,4,7,8,9)	X	1.20	62.26	9.36	3.23	80.0	± 9.6 %
		Y	1.42	64.84	10.94		80.0	
		Z	2.69	71.75	13.91		80.0	
10469-AAA	LTE-TDD (SC-FDMA, 1 RB, 5 MHz, 64-QAM, UL Subframe=2,3,4,7,8,9)	X	0.97	60.00	7.74	3.23	80.0	± 9.6 %
		Y	0.98	60.88	8.51		80.0	
		Z	1.14	62.63	9.57		80.0	
10470-AAA	LTE-TDD (SC-FDMA, 1 RB, 10 MHz, QPSK, UL Subframe=2,3,4,7,8,9)	X	10.09	91.74	22.55	3.23	80.0	± 9.6 %
		Y	26.36	107.67	27.59		80.0	
		Z	100.00	129.94	33.52		80.0	
10471-AAA	LTE-TDD (SC-FDMA, 1 RB, 10 MHz, 16-QAM, UL Subframe=2,3,4,7,8,9)	X	1.20	62.21	9.33	3.23	80.0	± 9.6 %
		Y	1.41	64.78	10.89		80.0	
		Z	2.65	71.59	13.84		80.0	
10472-AAA	LTE-TDD (SC-FDMA, 1 RB, 10 MHz, 64-QAM, UL Subframe=2,3,4,7,8,9)	X	0.97	60.00	7.72	3.23	80.0	± 9.6 %
		Y	0.97	60.85	8.48		80.0	
		Z	1.13	62.57	9.53		80.0	
10473-AAA	LTE-TDD (SC-FDMA, 1 RB, 15 MHz, QPSK, UL Subframe=2,3,4,7,8,9)	X	10.03	91.65	22.52	3.23	80.0	± 9.6 %
		Y	26.26	107.59	27.56		80.0	
		Z	100.00	129.89	33.50		80.0	
10474-AAA	LTE-TDD (SC-FDMA, 1 RB, 15 MHz, 16-QAM, UL Subframe=2,3,4,7,8,9)	X	1.19	62.19	9.31	3.23	80.0	± 9.6 %
		Y	1.40	64.74	10.88		80.0	
		Z	2.62	71.49	13.80		80.0	
10475-AAA	LTE-TDD (SC-FDMA, 1 RB, 15 MHz, 64-QAM, UL Subframe=2,3,4,7,8,9)	X	0.97	60.00	7.72	3.23	80.0	± 9.6 %
		Y	0.97	60.83	8.47		80.0	
		Z	1.13	62.55	9.52		80.0	

10477-AAA	LTE-TDD (SC-FDMA, 1 RB, 20 MHz, 16-QAM, UL Subframe=2,3,4,7,8,9)	X	1.18	62.04	9.22	3.23	80.0	± 9.6 %
		Y	1.36	64.46	10.73		80.0	
		Z	2.42	70.64	13.46		80.0	
10478-AAA	LTE-TDD (SC-FDMA, 1 RB, 20 MHz, 64-QAM, UL Subframe=2,3,4,7,8,9)	X	0.97	60.00	7.71	3.23	80.0	± 9.6 %
		Y	0.97	60.79	8.44		80.0	
		Z	1.12	62.48	9.47		80.0	
10479-AAA	LTE-TDD (SC-FDMA, 50% RB, 1.4 MHz, QPSK, UL Subframe=2,3,4,7,8,9)	X	5.79	81.61	21.14	3.23	80.0	± 9.6 %
		Y	6.43	84.35	22.44		80.0	
		Z	16.50	99.91	27.42		80.0	
10480-AAA	LTE-TDD (SC-FDMA, 50% RB, 1.4 MHz, 16-QAM, UL Subframe=2,3,4,7,8,9)	X	4.79	74.80	16.89	3.23	80.0	± 9.6 %
		Y	5.51	77.56	18.15		80.0	
		Z	13.07	89.27	21.96		80.0	
10481-AAA	LTE-TDD (SC-FDMA, 50% RB, 1.4 MHz, 64-QAM, UL Subframe=2,3,4,7,8,9)	X	3.83	71.49	15.26	3.23	80.0	± 9.6 %
		Y	4.32	73.83	16.40		80.0	
		Z	7.99	81.95	19.25		80.0	
10482-AAA	LTE-TDD (SC-FDMA, 50% RB, 3 MHz, QPSK, UL Subframe=2,3,4,7,8,9)	X	2.47	69.00	15.16	2.23	80.0	± 9.6 %
		Y	2.80	71.35	16.40		80.0	
		Z	3.21	74.01	17.48		80.0	
10483-AAA	LTE-TDD (SC-FDMA, 50% RB, 3 MHz, 16-QAM, UL Subframe=2,3,4,7,8,9)	X	3.29	69.29	14.76	2.23	80.0	± 9.6 %
		Y	3.39	70.23	15.29		80.0	
		Z	4.28	73.73	16.66		80.0	
10484-AAA	LTE-TDD (SC-FDMA, 50% RB, 3 MHz, 64-QAM, UL Subframe=2,3,4,7,8,9)	X	3.15	68.51	14.43	2.23	80.0	± 9.6 %
		Y	3.21	69.27	14.89		80.0	
		Z	3.83	72.02	15.99		80.0	
10485-AAA	LTE-TDD (SC-FDMA, 50% RB, 5 MHz, QPSK, UL Subframe=2,3,4,7,8,9)	X	2.94	71.17	17.10	2.23	80.0	± 9.6 %
		Y	3.21	73.22	18.25		80.0	
		Z	3.59	75.77	19.41		80.0	
10486-AAA	LTE-TDD (SC-FDMA, 50% RB, 5 MHz, 16-QAM, UL Subframe=2,3,4,7,8,9)	X	2.90	67.79	15.13	2.23	80.0	± 9.6 %
		Y	3.04	68.91	15.82		80.0	
		Z	3.16	70.10	16.36		80.0	
10487-AAA	LTE-TDD (SC-FDMA, 50% RB, 5 MHz, 64-QAM, UL Subframe=2,3,4,7,8,9)	X	2.91	67.46	14.97	2.23	80.0	± 9.6 %
		Y	3.03	68.48	15.61		80.0	
		Z	3.12	69.51	16.08		80.0	
10488-AAA	LTE-TDD (SC-FDMA, 50% RB, 10 MHz, QPSK, UL Subframe=2,3,4,7,8,9)	X	3.33	71.07	17.85	2.23	80.0	± 9.6 %
		Y	3.47	72.31	18.69		80.0	
		Z	3.56	73.52	19.42		80.0	
10489-AAA	LTE-TDD (SC-FDMA, 50% RB, 10 MHz, 16-QAM, UL Subframe=2,3,4,7,8,9)	X	3.34	68.19	16.65	2.23	80.0	± 9.6 %
		Y	3.37	68.78	17.15		80.0	
		Z	3.38	69.44	17.59		80.0	
10490-AAA	LTE-TDD (SC-FDMA, 50% RB, 10 MHz, 64-QAM, UL Subframe=2,3,4,7,8,9)	X	3.43	68.08	16.62	2.23	80.0	± 9.6 %
		Y	3.46	68.63	17.09		80.0	
		Z	3.46	69.22	17.49		80.0	
10491-AAA	LTE-TDD (SC-FDMA, 50% RB, 15 MHz, QPSK, UL Subframe=2,3,4,7,8,9)	X	3.62	69.97	17.57	2.23	80.0	± 9.6 %
		Y	3.69	70.77	18.19		80.0	
		Z	3.69	71.42	18.69		80.0	
10492-AAA	LTE-TDD (SC-FDMA, 50% RB, 15 MHz, 16-QAM, UL Subframe=2,3,4,7,8,9)	X	3.72	67.69	16.79	2.23	80.0	± 9.6 %
		Y	3.72	68.05	17.17		80.0	
		Z	3.67	68.35	17.46		80.0	

10493-AAA	LTE-TDD (SC-FDMA, 50% RB, 15 MHz, 64-QAM, UL Subframe=2,3,4,7,8,9)	X	3.78	67.60	16.76	2.23	80.0	± 9.6 %
		Y	3.78	67.93	17.12		80.0	
		Z	3.73	68.20	17.39		80.0	
10494-AAA	LTE-TDD (SC-FDMA, 50% RB, 20 MHz, QPSK, UL Subframe=2,3,4,7,8,9)	X	3.87	71.24	17.95	2.23	80.0	± 9.6 %
		Y	3.99	72.22	18.65		80.0	
		Z	4.03	73.07	19.24		80.0	
10495-AAA	LTE-TDD (SC-FDMA, 50% RB, 20 MHz, 16-QAM, UL Subframe=2,3,4,7,8,9)	X	3.74	68.03	16.97	2.23	80.0	± 9.6 %
		Y	3.74	68.39	17.36		80.0	
		Z	3.70	68.69	17.67		80.0	
10496-AAA	LTE-TDD (SC-FDMA, 50% RB, 20 MHz, 64-QAM, UL Subframe=2,3,4,7,8,9)	X	3.83	67.82	16.92	2.23	80.0	± 9.6 %
		Y	3.82	68.14	17.28		80.0	
		Z	3.77	68.40	17.57		80.0	
10497-AAA	LTE-TDD (SC-FDMA, 100% RB, 1.4 MHz, QPSK, UL Subframe=2,3,4,7,8,9)	X	1.73	64.57	12.13	2.23	80.0	± 9.6 %
		Y	1.89	66.21	13.07		80.0	
		Z	1.94	67.06	13.33		80.0	
10498-AAA	LTE-TDD (SC-FDMA, 100% RB, 1.4 MHz, 16-QAM, UL Subframe=2,3,4,7,8,9)	X	1.45	60.47	9.01	2.23	80.0	± 9.6 %
		Y	1.44	60.77	9.25		80.0	
		Z	1.30	60.18	8.72		80.0	
10499-AAA	LTE-TDD (SC-FDMA, 100% RB, 1.4 MHz, 64-QAM, UL Subframe=2,3,4,7,8,9)	X	1.42	60.06	8.65	2.23	80.0	± 9.6 %
		Y	1.40	60.27	8.83		80.0	
		Z	1.30	60.00	8.46		80.0	
10500-AAA	LTE-TDD (SC-FDMA, 100% RB, 3 MHz, QPSK, UL Subframe=2,3,4,7,8,9)	X	3.07	70.94	17.34	2.23	80.0	± 9.6 %
		Y	3.27	72.59	18.34		80.0	
		Z	3.49	74.45	19.27		80.0	
10501-AAA	LTE-TDD (SC-FDMA, 100% RB, 3 MHz, 16-QAM, UL Subframe=2,3,4,7,8,9)	X	3.11	68.08	15.77	2.23	80.0	± 9.6 %
		Y	3.21	69.00	16.39		80.0	
		Z	3.29	70.01	16.91		80.0	
10502-AAA	LTE-TDD (SC-FDMA, 100% RB, 3 MHz, 64-QAM, UL Subframe=2,3,4,7,8,9)	X	3.17	67.96	15.66	2.23	80.0	± 9.6 %
		Y	3.26	68.84	16.25		80.0	
		Z	3.33	69.79	16.73		80.0	
10503-AAA	LTE-TDD (SC-FDMA, 100% RB, 5 MHz, QPSK, UL Subframe=2,3,4,7,8,9)	X	3.29	70.88	17.75	2.23	80.0	± 9.6 %
		Y	3.43	72.12	18.59		80.0	
		Z	3.51	73.29	19.30		80.0	
10504-AAA	LTE-TDD (SC-FDMA, 100% RB, 5 MHz, 16-QAM, UL Subframe=2,3,4,7,8,9)	X	3.32	68.10	16.59	2.23	80.0	± 9.6 %
		Y	3.36	68.70	17.09		80.0	
		Z	3.36	69.33	17.52		80.0	
10505-AAA	LTE-TDD (SC-FDMA, 100% RB, 5 MHz, 64-QAM, UL Subframe=2,3,4,7,8,9)	X	3.41	67.99	16.56	2.23	80.0	± 9.6 %
		Y	3.44	68.54	17.03		80.0	
		Z	3.44	69.11	17.43		80.0	
10506-AAA	LTE-TDD (SC-FDMA, 100% RB, 10 MHz, QPSK, UL Subframe=2,3,4,7,8,9)	X	3.84	71.10	17.88	2.23	80.0	± 9.6 %
		Y	3.96	72.09	18.58		80.0	
		Z	4.00	72.91	19.15		80.0	
10507-AAA	LTE-TDD (SC-FDMA, 100% RB, 10 MHz, 16-QAM, UL Subframe=2,3,4,7,8,9)	X	3.73	67.96	16.93	2.23	80.0	± 9.6 %
		Y	3.73	68.33	17.33		80.0	
		Z	3.69	68.63	17.63		80.0	

10508-AAA	LTE-TDD (SC-FDMA, 100% RB, 10 MHz, 64-QAM, UL Subframe=2,3,4,7,8,9)	X	3.81	67.75	16.88	2.23	80.0	± 9.6 %
		Y	3.81	68.07	17.24		80.0	
		Z	3.76	68.32	17.52		80.0	
10509-AAA	LTE-TDD (SC-FDMA, 100% RB, 15 MHz, QPSK, UL Subframe=2,3,4,7,8,9)	X	4.23	70.18	17.53	2.23	80.0	± 9.6 %
		Y	4.29	70.82	18.06		80.0	
		Z	4.28	71.32	18.48		80.0	
10510-AAA	LTE-TDD (SC-FDMA, 100% RB, 15 MHz, 16-QAM, UL Subframe=2,3,4,7,8,9)	X	4.22	67.83	17.01	2.23	80.0	± 9.6 %
		Y	4.21	68.06	17.32		80.0	
		Z	4.14	68.17	17.53		80.0	
10511-AAA	LTE-TDD (SC-FDMA, 100% RB, 15 MHz, 64-QAM, UL Subframe=2,3,4,7,8,9)	X	4.29	67.62	16.96	2.23	80.0	± 9.6 %
		Y	4.27	67.83	17.26		80.0	
		Z	4.19	67.92	17.45		80.0	
10512-AAA	LTE-TDD (SC-FDMA, 100% RB, 20 MHz, QPSK, UL Subframe=2,3,4,7,8,9)	X	4.35	71.44	17.89	2.23	80.0	± 9.6 %
		Y	4.47	72.32	18.53		80.0	
		Z	4.51	73.01	19.04		80.0	
10513-AAA	LTE-TDD (SC-FDMA, 100% RB, 20 MHz, 16-QAM, UL Subframe=2,3,4,7,8,9)	X	4.10	68.03	17.08	2.23	80.0	± 9.6 %
		Y	4.10	68.29	17.42		80.0	
		Z	4.03	68.42	17.65		80.0	
10514-AAA	LTE-TDD (SC-FDMA, 100% RB, 20 MHz, 64-QAM, UL Subframe=2,3,4,7,8,9)	X	4.14	67.68	16.99	2.23	80.0	± 9.6 %
		Y	4.12	67.89	17.30		80.0	
		Z	4.05	67.99	17.51		80.0	
10515-AAA	IEEE 802.11b WiFi 2.4 GHz (DSSS, 2 Mbps, 99pc duty cycle)	X	0.99	63.57	15.14	0.00	150.0	± 9.6 %
		Y	1.00	63.68	15.25		150.0	
		Z	1.01	64.39	15.89		150.0	
10516-AAA	IEEE 802.11b WiFi 2.4 GHz (DSSS, 5.5 Mbps, 99pc duty cycle)	X	0.69	73.01	18.96	0.00	150.0	± 9.6 %
		Y	0.76	74.60	19.76		150.0	
		Z	1.14	83.38	23.78		150.0	
10517-AAA	IEEE 802.11b WiFi 2.4 GHz (DSSS, 11 Mbps, 99pc duty cycle)	X	0.85	65.81	15.99	0.00	150.0	± 9.6 %
		Y	0.87	66.06	16.18		150.0	
		Z	0.91	67.57	17.27		150.0	
10518-AAA	IEEE 802.11a/h WiFi 5 GHz (OFDM, 9 Mbps, 99pc duty cycle)	X	4.53	66.84	16.33	0.00	150.0	± 9.6 %
		Y	4.53	66.85	16.37		150.0	
		Z	4.51	67.02	16.53		150.0	
10519-AAA	IEEE 802.11a/h WiFi 5 GHz (OFDM, 12 Mbps, 99pc duty cycle)	X	4.71	67.05	16.44	0.00	150.0	± 9.6 %
		Y	4.70	67.06	16.48		150.0	
		Z	4.68	67.22	16.63		150.0	
10520-AAA	IEEE 802.11a/h WiFi 5 GHz (OFDM, 18 Mbps, 99pc duty cycle)	X	4.56	67.02	16.37	0.00	150.0	± 9.6 %
		Y	4.55	67.02	16.40		150.0	
		Z	4.54	67.18	16.56		150.0	
10521-AAA	IEEE 802.11a/h WiFi 5 GHz (OFDM, 24 Mbps, 99pc duty cycle)	X	4.50	67.01	16.36	0.00	150.0	± 9.6 %
		Y	4.49	67.01	16.39		150.0	
		Z	4.47	67.17	16.55		150.0	
10522-AAA	IEEE 802.11a/h WiFi 5 GHz (OFDM, 36 Mbps, 99pc duty cycle)	X	4.56	67.12	16.45	0.00	150.0	± 9.6 %
		Y	4.55	67.13	16.49		150.0	
		Z	4.53	67.31	16.65		150.0	

10523-AAA	IEEE 802.11a/h WiFi 5 GHz (OFDM, 48 Mbps, 99pc duty cycle)	X	4.44	67.00	16.31	0.00	150.0	± 9.6 %
		Y	4.44	67.02	16.35		150.0	
		Z	4.43	67.22	16.53		150.0	
10524-AAA	IEEE 802.11a/h WiFi 5 GHz (OFDM, 54 Mbps, 99pc duty cycle)	X	4.50	67.04	16.42	0.00	150.0	± 9.6 %
		Y	4.49	67.05	16.45		150.0	
		Z	4.48	67.23	16.62		150.0	
10525-AAA	IEEE 802.11ac WiFi (20MHz, MCS0, 99pc duty cycle)	X	4.50	66.10	16.02	0.00	150.0	± 9.6 %
		Y	4.49	66.11	16.05		150.0	
		Z	4.49	66.30	16.23		150.0	
10526-AAA	IEEE 802.11ac WiFi (20MHz, MCS1, 99pc duty cycle)	X	4.66	66.45	16.15	0.00	150.0	± 9.6 %
		Y	4.65	66.46	16.19		150.0	
		Z	4.64	66.63	16.36		150.0	
10527-AAA	IEEE 802.11ac WiFi (20MHz, MCS2, 99pc duty cycle)	X	4.58	66.42	16.10	0.00	150.0	± 9.6 %
		Y	4.57	66.42	16.13		150.0	
		Z	4.56	66.61	16.30		150.0	
10528-AAA	IEEE 802.11ac WiFi (20MHz, MCS3, 99pc duty cycle)	X	4.60	66.43	16.13	0.00	150.0	± 9.6 %
		Y	4.59	66.43	16.16		150.0	
		Z	4.58	66.62	16.33		150.0	
10529-AAA	IEEE 802.11ac WiFi (20MHz, MCS4, 99pc duty cycle)	X	4.60	66.43	16.13	0.00	150.0	± 9.6 %
		Y	4.59	66.43	16.16		150.0	
		Z	4.58	66.62	16.33		150.0	
10531-AAA	IEEE 802.11ac WiFi (20MHz, MCS6, 99pc duty cycle)	X	4.58	66.52	16.14	0.00	150.0	± 9.6 %
		Y	4.57	66.52	16.17		150.0	
		Z	4.56	66.70	16.34		150.0	
10532-AAA	IEEE 802.11ac WiFi (20MHz, MCS7, 99pc duty cycle)	X	4.45	66.38	16.07	0.00	150.0	± 9.6 %
		Y	4.44	66.38	16.10		150.0	
		Z	4.43	66.56	16.28		150.0	
10533-AAA	IEEE 802.11ac WiFi (20MHz, MCS8, 99pc duty cycle)	X	4.61	66.49	16.12	0.00	150.0	± 9.6 %
		Y	4.60	66.50	16.16		150.0	
		Z	4.59	66.69	16.34		150.0	
10534-AAA	IEEE 802.11ac WiFi (40MHz, MCS0, 99pc duty cycle)	X	5.13	66.49	16.17	0.00	150.0	± 9.6 %
		Y	5.13	66.48	16.20		150.0	
		Z	5.12	66.61	16.35		150.0	
10535-AAA	IEEE 802.11ac WiFi (40MHz, MCS1, 99pc duty cycle)	X	5.20	66.68	16.26	0.00	150.0	± 9.6 %
		Y	5.20	66.68	16.30		150.0	
		Z	5.19	66.81	16.45		150.0	
10536-AAA	IEEE 802.11ac WiFi (40MHz, MCS2, 99pc duty cycle)	X	5.07	66.63	16.21	0.00	150.0	± 9.6 %
		Y	5.07	66.63	16.25		150.0	
		Z	5.07	66.78	16.41		150.0	
10537-AAA	IEEE 802.11ac WiFi (40MHz, MCS3, 99pc duty cycle)	X	5.13	66.59	16.20	0.00	150.0	± 9.6 %
		Y	5.12	66.59	16.23		150.0	
		Z	5.12	66.73	16.39		150.0	
10538-AAA	IEEE 802.11ac WiFi (40MHz, MCS4, 99pc duty cycle)	X	5.21	66.60	16.24	0.00	150.0	± 9.6 %
		Y	5.21	66.59	16.27		150.0	
		Z	5.20	66.72	16.42		150.0	
10540-AAA	IEEE 802.11ac WiFi (40MHz, MCS6, 99pc duty cycle)	X	5.15	66.62	16.26	0.00	150.0	± 9.6 %
		Y	5.14	66.60	16.29		150.0	
		Z	5.13	66.71	16.44		150.0	

10541-AAA	IEEE 802.11ac WiFi (40MHz, MCS7, 99pc duty cycle)	X	5.12	66.49	16.19	0.00	150.0	± 9.6 %
		Y	5.12	66.48	16.22		150.0	
		Z	5.11	66.59	16.36		150.0	
10542-AAA	IEEE 802.11ac WiFi (40MHz, MCS8, 99pc duty cycle)	X	5.27	66.56	16.24	0.00	150.0	± 9.6 %
		Y	5.27	66.55	16.27		150.0	
		Z	5.26	66.67	16.42		150.0	
10543-AAA	IEEE 802.11ac WiFi (40MHz, MCS9, 99pc duty cycle)	X	5.34	66.58	16.27	0.00	150.0	± 9.6 %
		Y	5.34	66.57	16.30		150.0	
		Z	5.32	66.68	16.44		150.0	
10544-AAA	IEEE 802.11ac WiFi (80MHz, MCS0, 99pc duty cycle)	X	5.45	66.59	16.16	0.00	150.0	± 9.6 %
		Y	5.45	66.58	16.19		150.0	
		Z	5.45	66.68	16.33		150.0	
10545-AAA	IEEE 802.11ac WiFi (80MHz, MCS1, 99pc duty cycle)	X	5.65	67.02	16.32	0.00	150.0	± 9.6 %
		Y	5.65	67.03	16.37		150.0	
		Z	5.65	67.16	16.52		150.0	
10546-AAA	IEEE 802.11ac WiFi (80MHz, MCS2, 99pc duty cycle)	X	5.51	66.78	16.22	0.00	150.0	± 9.6 %
		Y	5.51	66.76	16.25		150.0	
		Z	5.50	66.85	16.38		150.0	
10547-AAA	IEEE 802.11ac WiFi (80MHz, MCS3, 99pc duty cycle)	X	5.58	66.83	16.23	0.00	150.0	± 9.6 %
		Y	5.58	66.82	16.27		150.0	
		Z	5.58	66.92	16.41		150.0	
10548-AAA	IEEE 802.11ac WiFi (80MHz, MCS4, 99pc duty cycle)	X	5.82	67.72	16.65	0.00	150.0	± 9.6 %
		Y	5.82	67.73	16.70		150.0	
		Z	5.82	67.86	16.84		150.0	
10550-AAA	IEEE 802.11ac WiFi (80MHz, MCS6, 99pc duty cycle)	X	5.54	66.83	16.25	0.00	150.0	± 9.6 %
		Y	5.55	66.84	16.30		150.0	
		Z	5.55	66.98	16.45		150.0	
10551-AAA	IEEE 802.11ac WiFi (80MHz, MCS7, 99pc duty cycle)	X	5.54	66.85	16.23	0.00	150.0	± 9.6 %
		Y	5.54	66.83	16.26		150.0	
		Z	5.53	66.91	16.38		150.0	
10552-AAA	IEEE 802.11ac WiFi (80MHz, MCS8, 99pc duty cycle)	X	5.46	66.66	16.14	0.00	150.0	± 9.6 %
		Y	5.46	66.65	16.17		150.0	
		Z	5.46	66.76	16.31		150.0	
10553-AAA	IEEE 802.11ac WiFi (80MHz, MCS9, 99pc duty cycle)	X	5.54	66.68	16.18	0.00	150.0	± 9.6 %
		Y	5.54	66.66	16.21		150.0	
		Z	5.53	66.75	16.33		150.0	
10554-AAA	IEEE 802.11ac WiFi (160MHz, MCS0, 99pc duty cycle)	X	5.86	66.95	16.24	0.00	150.0	± 9.6 %
		Y	5.87	66.94	16.27		150.0	
		Z	5.87	67.02	16.40		150.0	
10555-AAA	IEEE 1602.11ac WiFi (160MHz, MCS1, 99pc duty cycle)	X	5.99	67.24	16.37	0.00	150.0	± 9.6 %
		Y	5.99	67.24	16.41		150.0	
		Z	6.00	67.33	16.53		150.0	
10556-AAA	IEEE 1602.11ac WiFi (160MHz, MCS2, 99pc duty cycle)	X	6.01	67.30	16.39	0.00	150.0	± 9.6 %
		Y	6.02	67.29	16.43		150.0	
		Z	6.02	67.39	16.56		150.0	
10557-AAA	IEEE 1602.11ac WiFi (160MHz, MCS3, 99pc duty cycle)	X	5.97	67.18	16.35	0.00	150.0	± 9.6 %
		Y	5.97	67.17	16.38		150.0	
		Z	5.97	67.25	16.50		150.0	



10558-AAA	IEEE 1602.11ac WiFi (160MHz, MCS4, 99pc duty cycle)	X	6.02	67.34	16.44	0.00	150.0	± 9.6 %
		Y	6.02	67.33	16.48		150.0	
		Z	6.02	67.41	16.60		150.0	
10560-AAA	IEEE 1602.11ac WiFi (160MHz, MCS6, 99pc duty cycle)	X	6.01	67.19	16.40	0.00	150.0	± 9.6 %
		Y	6.01	67.17	16.44		150.0	
		Z	6.01	67.25	16.56		150.0	
10561-AAA	IEEE 1602.11ac WiFi (160MHz, MCS7, 99pc duty cycle)	X	5.94	67.17	16.43	0.00	150.0	± 9.6 %
		Y	5.94	67.16	16.47		150.0	
		Z	5.94	67.25	16.59		150.0	
10562-AAA	IEEE 1602.11ac WiFi (160MHz, MCS8, 99pc duty cycle)	X	6.05	67.50	16.60	0.00	150.0	± 9.6 %
		Y	6.04	67.48	16.63		150.0	
		Z	6.03	67.53	16.73		150.0	
10563-AAA	IEEE 1602.11ac WiFi (160MHz, MCS9, 99pc duty cycle)	X	6.18	67.54	16.57	0.00	150.0	± 9.6 %
		Y	6.16	67.46	16.58		150.0	
		Z	6.13	67.46	16.66		150.0	
10564-AAA	IEEE 802.11g WiFi 2.4 GHz (DSSS-OFDM, 9 Mbps, 99pc duty cycle)	X	4.85	66.86	16.45	0.46	150.0	± 9.6 %
		Y	4.85	66.90	16.51		150.0	
		Z	4.83	67.01	16.63		150.0	
10565-AAA	IEEE 802.11g WiFi 2.4 GHz (DSSS-OFDM, 12 Mbps, 99pc duty cycle)	X	5.07	67.31	16.78	0.46	150.0	± 9.6 %
		Y	5.07	67.32	16.82		150.0	
		Z	5.04	67.46	16.96		150.0	
10566-AAA	IEEE 802.11g WiFi 2.4 GHz (DSSS-OFDM, 18 Mbps, 99pc duty cycle)	X	4.91	67.14	16.58	0.46	150.0	± 9.6 %
		Y	4.90	67.16	16.63		150.0	
		Z	4.88	67.28	16.77		150.0	
10567-AAA	IEEE 802.11g WiFi 2.4 GHz (DSSS-OFDM, 24 Mbps, 99pc duty cycle)	X	4.94	67.56	16.96	0.46	150.0	± 9.6 %
		Y	4.93	67.55	16.99		150.0	
		Z	4.92	67.73	17.17		150.0	
10568-AAA	IEEE 802.11g WiFi 2.4 GHz (DSSS-OFDM, 36 Mbps, 99pc duty cycle)	X	4.81	66.90	16.33	0.46	150.0	± 9.6 %
		Y	4.81	66.96	16.42		150.0	
		Z	4.78	67.05	16.52		150.0	
10569-AAA	IEEE 802.11g WiFi 2.4 GHz (DSSS-OFDM, 48 Mbps, 99pc duty cycle)	X	4.90	67.67	17.03	0.46	150.0	± 9.6 %
		Y	4.89	67.66	17.06		150.0	
		Z	4.89	67.89	17.27		150.0	
10570-AAA	IEEE 802.11g WiFi 2.4 GHz (DSSS-OFDM, 54 Mbps, 99pc duty cycle)	X	4.93	67.52	16.97	0.46	150.0	± 9.6 %
		Y	4.92	67.51	16.99		150.0	
		Z	4.91	67.69	17.17		150.0	
10571-AAA	IEEE 802.11b WiFi 2.4 GHz (DSSS, 1 Mbps, 90pc duty cycle)	X	1.18	64.49	15.64	0.46	130.0	± 9.6 %
		Y	1.18	64.58	15.85		130.0	
		Z	1.17	65.05	16.37		130.0	
10572-AAA	IEEE 802.11b WiFi 2.4 GHz (DSSS, 2 Mbps, 90pc duty cycle)	X	1.19	65.08	16.01	0.46	130.0	± 9.6 %
		Y	1.19	65.16	16.21		130.0	
		Z	1.19	65.73	16.80		130.0	
10573-AAA	IEEE 802.11b WiFi 2.4 GHz (DSSS, 5.5 Mbps, 90pc duty cycle)	X	2.04	85.68	23.36	0.46	130.0	± 9.6 %
		Y	2.40	89.44	25.12		130.0	
		Z	5.21	105.54	30.78		130.0	
10574-AAA	IEEE 802.11b WiFi 2.4 GHz (DSSS, 11 Mbps, 90pc duty cycle)	X	1.32	71.14	19.11	0.46	130.0	± 9.6 %
		Y	1.31	71.08	19.29		130.0	
		Z	1.39	73.35	20.74		130.0	

10575-AAA	IEEE 802.11g WiFi 2.4 GHz (DSSS-OFDM, 6 Mbps, 90pc duty cycle)	X	4.62	66.58	16.43	0.46	130.0	± 9.6 %
		Y	4.62	66.64	16.52		130.0	
		Z	4.60	66.77	16.65		130.0	
10576-AAA	IEEE 802.11g WiFi 2.4 GHz (DSSS-OFDM, 9 Mbps, 90pc duty cycle)	X	4.65	66.76	16.50	0.46	130.0	± 9.6 %
		Y	4.65	66.82	16.59		130.0	
		Z	4.63	66.97	16.74		130.0	
10577-AAA	IEEE 802.11g WiFi 2.4 GHz (DSSS-OFDM, 12 Mbps, 90pc duty cycle)	X	4.84	67.04	16.67	0.46	130.0	± 9.6 %
		Y	4.84	67.09	16.75		130.0	
		Z	4.82	67.24	16.90		130.0	
10578-AAA	IEEE 802.11g WiFi 2.4 GHz (DSSS-OFDM, 18 Mbps, 90pc duty cycle)	X	4.74	67.21	16.78	0.46	130.0	± 9.6 %
		Y	4.74	67.23	16.84		130.0	
		Z	4.72	67.41	17.02		130.0	
10579-AAA	IEEE 802.11g WiFi 2.4 GHz (DSSS-OFDM, 24 Mbps, 90pc duty cycle)	X	4.49	66.42	16.04	0.46	130.0	± 9.6 %
		Y	4.50	66.52	16.16		130.0	
		Z	4.47	66.59	16.26		130.0	
10580-AAA	IEEE 802.11g WiFi 2.4 GHz (DSSS-OFDM, 36 Mbps, 90pc duty cycle)	X	4.54	66.47	16.06	0.46	130.0	± 9.6 %
		Y	4.55	66.58	16.19		130.0	
		Z	4.52	66.65	16.29		130.0	
10581-AAA	IEEE 802.11g WiFi 2.4 GHz (DSSS-OFDM, 48 Mbps, 90pc duty cycle)	X	4.64	67.25	16.72	0.46	130.0	± 9.6 %
		Y	4.64	67.27	16.79		130.0	
		Z	4.62	67.46	16.97		130.0	
10582-AAA	IEEE 802.11g WiFi 2.4 GHz (DSSS-OFDM, 54 Mbps, 90pc duty cycle)	X	4.43	66.17	15.82	0.46	130.0	± 9.6 %
		Y	4.44	66.30	15.96		130.0	
		Z	4.40	66.34	16.03		130.0	
10583-AAA	IEEE 802.11a/h WiFi 5 GHz (OFDM, 6 Mbps, 90pc duty cycle)	X	4.62	66.58	16.43	0.46	130.0	± 9.6 %
		Y	4.62	66.64	16.52		130.0	
		Z	4.60	66.77	16.65		130.0	
10584-AAA	IEEE 802.11a/h WiFi 5 GHz (OFDM, 9 Mbps, 90pc duty cycle)	X	4.65	66.76	16.50	0.46	130.0	± 9.6 %
		Y	4.65	66.82	16.59		130.0	
		Z	4.63	66.97	16.74		130.0	
10585-AAA	IEEE 802.11a/h WiFi 5 GHz (OFDM, 12 Mbps, 90pc duty cycle)	X	4.84	67.04	16.67	0.46	130.0	± 9.6 %
		Y	4.84	67.09	16.75		130.0	
		Z	4.82	67.24	16.90		130.0	
10586-AAA	IEEE 802.11a/h WiFi 5 GHz (OFDM, 18 Mbps, 90pc duty cycle)	X	4.74	67.21	16.78	0.46	130.0	± 9.6 %
		Y	4.74	67.23	16.84		130.0	
		Z	4.72	67.41	17.02		130.0	
10587-AAA	IEEE 802.11a/h WiFi 5 GHz (OFDM, 24 Mbps, 90pc duty cycle)	X	4.49	66.42	16.04	0.46	130.0	± 9.6 %
		Y	4.50	66.52	16.16		130.0	
		Z	4.47	66.59	16.26		130.0	
10588-AAA	IEEE 802.11a/h WiFi 5 GHz (OFDM, 36 Mbps, 90pc duty cycle)	X	4.54	66.47	16.06	0.46	130.0	± 9.6 %
		Y	4.55	66.58	16.19		130.0	
		Z	4.52	66.65	16.29		130.0	
10589-AAA	IEEE 802.11a/h WiFi 5 GHz (OFDM, 48 Mbps, 90pc duty cycle)	X	4.64	67.25	16.72	0.46	130.0	± 9.6 %
		Y	4.64	67.27	16.79		130.0	
		Z	4.62	67.46	16.97		130.0	
10590-AAA	IEEE 802.11a/h WiFi 5 GHz (OFDM, 54 Mbps, 90pc duty cycle)	X	4.43	66.17	15.82	0.46	130.0	± 9.6 %
		Y	4.44	66.30	15.96		130.0	
		Z	4.40	66.34	16.03		130.0	

10591-AAA	IEEE 802.11n (HT Mixed, 20MHz, MCS0, 90pc duty cycle)	X	4.77	66.65	16.54	0.46	130.0	± 9.6 %
		Y	4.77	66.70	16.62		130.0	
		Z	4.76	66.84	16.76		130.0	
10592-AAA	IEEE 802.11n (HT Mixed, 20MHz, MCS1, 90pc duty cycle)	X	4.92	66.98	16.67	0.46	130.0	± 9.6 %
		Y	4.92	67.03	16.75		130.0	
		Z	4.90	67.16	16.89		130.0	
10593-AAA	IEEE 802.11n (HT Mixed, 20MHz, MCS2, 90pc duty cycle)	X	4.84	66.87	16.54	0.46	130.0	± 9.6 %
		Y	4.84	66.93	16.62		130.0	
		Z	4.81	67.05	16.76		130.0	
10594-AAA	IEEE 802.11n (HT Mixed, 20MHz, MCS3, 90pc duty cycle)	X	4.89	67.05	16.70	0.46	130.0	± 9.6 %
		Y	4.89	67.09	16.78		130.0	
		Z	4.87	67.23	16.93		130.0	
10595-AAA	IEEE 802.11n (HT Mixed, 20MHz, MCS4, 90pc duty cycle)	X	4.86	67.00	16.59	0.46	130.0	± 9.6 %
		Y	4.86	67.06	16.68		130.0	
		Z	4.84	67.19	16.82		130.0	
10596-AAA	IEEE 802.11n (HT Mixed, 20MHz, MCS5, 90pc duty cycle)	X	4.79	66.99	16.59	0.46	130.0	± 9.6 %
		Y	4.79	67.05	16.68		130.0	
		Z	4.77	67.18	16.82		130.0	
10597-AAA	IEEE 802.11n (HT Mixed, 20MHz, MCS6, 90pc duty cycle)	X	4.74	66.88	16.46	0.46	130.0	± 9.6 %
		Y	4.74	66.94	16.56		130.0	
		Z	4.72	67.06	16.69		130.0	
10598-AAA	IEEE 802.11n (HT Mixed, 20MHz, MCS7, 90pc duty cycle)	X	4.73	67.13	16.74	0.46	130.0	± 9.6 %
		Y	4.73	67.16	16.81		130.0	
		Z	4.71	67.31	16.97		130.0	
10599-AAA	IEEE 802.11n (HT Mixed, 40MHz, MCS0, 90pc duty cycle)	X	5.44	67.16	16.74	0.46	130.0	± 9.6 %
		Y	5.45	67.22	16.84		130.0	
		Z	5.44	67.34	16.97		130.0	
10600-AAA	IEEE 802.11n (HT Mixed, 40MHz, MCS1, 90pc duty cycle)	X	5.58	67.60	16.93	0.46	130.0	± 9.6 %
		Y	5.59	67.67	17.03		130.0	
		Z	5.59	67.82	17.19		130.0	
10601-AAA	IEEE 802.11n (HT Mixed, 40MHz, MCS2, 90pc duty cycle)	X	5.46	67.34	16.82	0.46	130.0	± 9.6 %
		Y	5.47	67.40	16.91		130.0	
		Z	5.46	67.52	17.06		130.0	
10602-AAA	IEEE 802.11n (HT Mixed, 40MHz, MCS3, 90pc duty cycle)	X	5.57	67.41	16.77	0.46	130.0	± 9.6 %
		Y	5.59	67.51	16.89		130.0	
		Z	5.59	67.66	17.04		130.0	
10603-AAA	IEEE 802.11n (HT Mixed, 40MHz, MCS4, 90pc duty cycle)	X	5.64	67.69	17.04	0.46	130.0	± 9.6 %
		Y	5.65	67.76	17.15		130.0	
		Z	5.66	67.94	17.32		130.0	
10604-AAA	IEEE 802.11n (HT Mixed, 40MHz, MCS5, 90pc duty cycle)	X	5.48	67.25	16.81	0.46	130.0	± 9.6 %
		Y	5.51	67.36	16.93		130.0	
		Z	5.53	67.59	17.13		130.0	
10605-AAA	IEEE 802.11n (HT Mixed, 40MHz, MCS6, 90pc duty cycle)	X	5.57	67.50	16.93	0.46	130.0	± 9.6 %
		Y	5.58	67.59	17.04		130.0	
		Z	5.58	67.71	17.18		130.0	
10606-AAA	IEEE 802.11n (HT Mixed, 40MHz, MCS7, 90pc duty cycle)	X	5.29	66.76	16.41	0.46	130.0	± 9.6 %
		Y	5.30	66.83	16.52		130.0	
		Z	5.29	66.93	16.65		130.0	

10607-AAA	IEEE 802.11ac WiFi (20MHz, MCS0, 90pc duty cycle)	X	4.61	65.98	16.17	0.46	130.0	± 9.6 %
		Y	4.62	66.04	16.25		130.0	
		Z	4.61	66.21	16.42		130.0	
10608-AAA	IEEE 802.11ac WiFi (20MHz, MCS1, 90pc duty cycle)	X	4.79	66.37	16.33	0.46	130.0	± 9.6 %
		Y	4.79	66.43	16.41		130.0	
		Z	4.78	66.59	16.58		130.0	
10609-AAA	IEEE 802.11ac WiFi (20MHz, MCS2, 90pc duty cycle)	X	4.68	66.21	16.16	0.46	130.0	± 9.6 %
		Y	4.68	66.27	16.25		130.0	
		Z	4.67	66.43	16.40		130.0	
10610-AAA	IEEE 802.11ac WiFi (20MHz, MCS3, 90pc duty cycle)	X	4.73	66.37	16.33	0.46	130.0	± 9.6 %
		Y	4.73	66.43	16.41		130.0	
		Z	4.72	66.60	16.58		130.0	
10611-AAA	IEEE 802.11ac WiFi (20MHz, MCS4, 90pc duty cycle)	X	4.64	66.17	16.17	0.46	130.0	± 9.6 %
		Y	4.65	66.23	16.26		130.0	
		Z	4.63	66.39	16.42		130.0	
10612-AAA	IEEE 802.11ac WiFi (20MHz, MCS5, 90pc duty cycle)	X	4.65	66.32	16.21	0.46	130.0	± 9.6 %
		Y	4.65	66.39	16.31		130.0	
		Z	4.63	66.55	16.46		130.0	
10613-AAA	IEEE 802.11ac WiFi (20MHz, MCS6, 90pc duty cycle)	X	4.65	66.18	16.08	0.46	130.0	± 9.6 %
		Y	4.65	66.25	16.18		130.0	
		Z	4.63	66.38	16.32		130.0	
10614-AAA	IEEE 802.11ac WiFi (20MHz, MCS7, 90pc duty cycle)	X	4.60	66.40	16.33	0.46	130.0	± 9.6 %
		Y	4.60	66.44	16.41		130.0	
		Z	4.59	66.62	16.59		130.0	
10615-AAA	IEEE 802.11ac WiFi (20MHz, MCS8, 90pc duty cycle)	X	4.64	65.98	15.93	0.46	130.0	± 9.6 %
		Y	4.65	66.08	16.04		130.0	
		Z	4.62	66.20	16.17		130.0	
10616-AAA	IEEE 802.11ac WiFi (40MHz, MCS0, 90pc duty cycle)	X	5.26	66.43	16.36	0.46	130.0	± 9.6 %
		Y	5.27	66.47	16.44		130.0	
		Z	5.26	66.58	16.58		130.0	
10617-AAA	IEEE 802.11ac WiFi (40MHz, MCS1, 90pc duty cycle)	X	5.33	66.62	16.43	0.46	130.0	± 9.6 %
		Y	5.34	66.68	16.52		130.0	
		Z	5.34	66.82	16.67		130.0	
10618-AAA	IEEE 802.11ac WiFi (40MHz, MCS2, 90pc duty cycle)	X	5.22	66.63	16.45	0.46	130.0	± 9.6 %
		Y	5.23	66.68	16.53		130.0	
		Z	5.23	66.84	16.70		130.0	
10619-AAA	IEEE 802.11ac WiFi (40MHz, MCS3, 90pc duty cycle)	X	5.23	66.41	16.27	0.46	130.0	± 9.6 %
		Y	5.24	66.47	16.37		130.0	
		Z	5.23	66.59	16.51		130.0	
10620-AAA	IEEE 802.11ac WiFi (40MHz, MCS4, 90pc duty cycle)	X	5.32	66.44	16.34	0.46	130.0	± 9.6 %
		Y	5.32	66.50	16.43		130.0	
		Z	5.31	66.61	16.57		130.0	
10621-AAA	IEEE 802.11ac WiFi (40MHz, MCS5, 90pc duty cycle)	X	5.33	66.61	16.54	0.46	130.0	± 9.6 %
		Y	5.33	66.63	16.61		130.0	
		Z	5.33	66.77	16.77		130.0	
10622-AAA	IEEE 802.11ac WiFi (40MHz, MCS6, 90pc duty cycle)	X	5.34	66.76	16.61	0.46	130.0	± 9.6 %
		Y	5.34	66.80	16.69		130.0	
		Z	5.35	66.98	16.87		130.0	

10623-AAA	IEEE 802.11ac WiFi (40MHz, MCS7, 90pc duty cycle)	X	5.21	66.27	16.23	0.46	130.0	± 9.6 %
		Y	5.22	66.33	16.33		130.0	
		Z	5.20	66.41	16.45		130.0	
10624-AAA	IEEE 802.11ac WiFi (40MHz, MCS8, 90pc duty cycle)	X	5.40	66.47	16.40	0.46	130.0	± 9.6 %
		Y	5.41	66.52	16.49		130.0	
		Z	5.40	66.63	16.62		130.0	
10625-AAA	IEEE 802.11ac WiFi (40MHz, MCS9, 90pc duty cycle)	X	5.72	67.33	16.88	0.46	130.0	± 9.6 %
		Y	5.71	67.32	16.94		130.0	
		Z	5.65	67.29	17.01		130.0	
10626-AAA	IEEE 802.11ac WiFi (80MHz, MCS0, 90pc duty cycle)	X	5.57	66.48	16.32	0.46	130.0	± 9.6 %
		Y	5.58	66.52	16.39		130.0	
		Z	5.58	66.62	16.53		130.0	
10627-AAA	IEEE 802.11ac WiFi (80MHz, MCS1, 90pc duty cycle)	X	5.81	67.07	16.57	0.46	130.0	± 9.6 %
		Y	5.83	67.14	16.67		130.0	
		Z	5.84	67.29	16.83		130.0	
10628-AAA	IEEE 802.11ac WiFi (80MHz, MCS2, 90pc duty cycle)	X	5.59	66.54	16.24	0.46	130.0	± 9.6 %
		Y	5.60	66.58	16.33		130.0	
		Z	5.59	66.64	16.44		130.0	
10629-AAA	IEEE 802.11ac WiFi (80MHz, MCS3, 90pc duty cycle)	X	5.66	66.59	16.26	0.46	130.0	± 9.6 %
		Y	5.68	66.66	16.36		130.0	
		Z	5.68	66.76	16.49		130.0	
10630-AAA	IEEE 802.11ac WiFi (80MHz, MCS4, 90pc duty cycle)	X	6.07	68.02	16.97	0.46	130.0	± 9.6 %
		Y	6.09	68.11	17.08		130.0	
		Z	6.09	68.21	17.21		130.0	
10631-AAA	IEEE 802.11ac WiFi (80MHz, MCS5, 90pc duty cycle)	X	5.98	67.87	17.10	0.46	130.0	± 9.6 %
		Y	5.98	67.86	17.14		130.0	
		Z	5.98	67.98	17.30		130.0	
10632-AAA	IEEE 802.11ac WiFi (80MHz, MCS6, 90pc duty cycle)	X	5.78	67.15	16.76	0.46	130.0	± 9.6 %
		Y	5.79	67.19	16.83		130.0	
		Z	5.81	67.39	17.02		130.0	
10633-AAA	IEEE 802.11ac WiFi (80MHz, MCS7, 90pc duty cycle)	X	5.65	66.72	16.36	0.46	130.0	± 9.6 %
		Y	5.66	66.75	16.44		130.0	
		Z	5.66	66.85	16.58		130.0	
10634-AAA	IEEE 802.11ac WiFi (80MHz, MCS8, 90pc duty cycle)	X	5.64	66.75	16.44	0.46	130.0	± 9.6 %
		Y	5.64	66.77	16.50		130.0	
		Z	5.64	66.87	16.64		130.0	
10635-AAA	IEEE 802.11ac WiFi (80MHz, MCS9, 90pc duty cycle)	X	5.51	66.04	15.80	0.46	130.0	± 9.6 %
		Y	5.52	66.11	15.92		130.0	
		Z	5.50	66.12	15.99		130.0	
10636-AAA	IEEE 1602.11ac WiFi (160MHz, MCS0, 90pc duty cycle)	X	5.98	66.84	16.40	0.46	130.0	± 9.6 %
		Y	6.00	66.88	16.48		130.0	
		Z	6.01	66.98	16.61		130.0	
10637-AAA	IEEE 1602.11ac WiFi (160MHz, MCS1, 90pc duty cycle)	X	6.14	67.23	16.58	0.46	130.0	± 9.6 %
		Y	6.16	67.29	16.67		130.0	
		Z	6.17	67.39	16.80		130.0	
10638-AAA	IEEE 1602.11ac WiFi (160MHz, MCS2, 90pc duty cycle)	X	6.14	67.19	16.53	0.46	130.0	± 9.6 %
		Y	6.15	67.25	16.62		130.0	
		Z	6.16	67.35	16.75		130.0	

10639-AAA	IEEE 1602.11ac WiFi (160MHz, MCS3, 90pc duty cycle)	X	6.11	67.13	16.55	0.46	130.0	± 9.6 %
		Y	6.12	67.17	16.63		130.0	
		Z	6.12	67.25	16.75		130.0	
10640-AAA	IEEE 1602.11ac WiFi (160MHz, MCS4, 90pc duty cycle)	X	6.11	67.13	16.49	0.46	130.0	± 9.6 %
		Y	6.13	67.18	16.58		130.0	
		Z	6.12	67.25	16.69		130.0	
10641-AAA	IEEE 1602.11ac WiFi (160MHz, MCS5, 90pc duty cycle)	X	6.17	67.07	16.48	0.46	130.0	± 9.6 %
		Y	6.19	67.15	16.58		130.0	
		Z	6.20	67.24	16.70		130.0	
10642-AAA	IEEE 1602.11ac WiFi (160MHz, MCS6, 90pc duty cycle)	X	6.20	67.32	16.77	0.46	130.0	± 9.6 %
		Y	6.21	67.33	16.84		130.0	
		Z	6.22	67.44	16.97		130.0	
10643-AAA	IEEE 1602.11ac WiFi (160MHz, MCS7, 90pc duty cycle)	X	6.04	66.99	16.50	0.46	130.0	± 9.6 %
		Y	6.06	67.06	16.60		130.0	
		Z	6.06	67.15	16.72		130.0	
10644-AAA	IEEE 1602.11ac WiFi (160MHz, MCS8, 90pc duty cycle)	X	6.18	67.41	16.73	0.46	130.0	± 9.6 %
		Y	6.18	67.45	16.81		130.0	
		Z	6.17	67.47	16.90		130.0	
10645-AAA	IEEE 1602.11ac WiFi (160MHz, MCS9, 90pc duty cycle)	X	6.37	67.64	16.81	0.46	130.0	± 9.6 %
		Y	6.35	67.59	16.85		130.0	
		Z	6.32	67.58	16.92		130.0	
10646-AAB	LTE-TDD (SC-FDMA, 1 RB, 5 MHz, QPSK, UL Subframe=2,7)	X	14.22	101.24	33.75	9.30	60.0	± 9.6 %
		Y	18.00	109.63	37.45		60.0	
		Z	12.76	102.15	35.22		60.0	
10647-AAA	LTE-TDD (SC-FDMA, 1 RB, 20 MHz, QPSK, UL Subframe=2,7)	X	12.74	99.52	33.33	9.30	60.0	± 9.6 %
		Y	15.51	106.93	36.77		60.0	
		Z	11.10	99.62	34.55		60.0	
10648-AAA	CDMA2000 (1x Advanced)	X	0.71	64.23	11.16	0.00	150.0	± 9.6 %
		Y	0.71	64.30	11.16		150.0	
		Z	0.73	65.24	11.45		150.0	

<sup>E</sup> Uncertainty is determined using the max. deviation from linear response applying rectangular distribution and is expressed for the square of the field value.



### **12.5. Calibration Certificate for Dipole**

This sub-section contains Cal Certificates for Dipoles, and is not included in the total number of pages for this report.

A1322

**Calibration Laboratory of**  
**Schmid & Partner**  
**Engineering AG**  
 Zeughausstrasse 43, 8004 Zurich, Switzerland



**S** Schweizerischer Kalibrierdienst  
**C** Service suisse d'étalonnage  
**S** Servizio svizzero di taratura  
**S** Swiss Calibration Service

Accredited by the Swiss Accreditation Service (SAS)  
 The Swiss Accreditation Service is one of the signatories to the EA  
 Multilateral Agreement for the recognition of calibration certificates

Accreditation No.: **SCS 0108**

Client **UL RFI UK**

Certificate No: **D2450V2-725\_Sep16**

## CALIBRATION CERTIFICATE

Object **D2450V2 - SN:725**

Calibration procedure(s) **QA CAL-05.v9**  
**Calibration procedure for dipole validation kits above 700 MHz**

Calibration date: **September 29, 2016**

This calibration certificate documents the traceability to national standards, which realize the physical units of measurements (SI).  
 The measurements and the uncertainties with confidence probability are given on the following pages and are part of the certificate.

All calibrations have been conducted in the closed laboratory facility: environment temperature ( $22 \pm 3$ )°C and humidity < 70%.

Calibration Equipment used (M&TE critical for calibration)

Primary Standards	ID #	Cal Date (Certificate No.)	Scheduled Calibration
Power meter NRP	SN: 104778	06-Apr-16 (No. 217-02288/02289)	Apr-17
Power sensor NRP-Z91	SN: 103244	06-Apr-16 (No. 217-02288)	Apr-17
Power sensor NRP-Z91	SN: 103245	06-Apr-16 (No. 217-02289)	Apr-17
Reference 20 dB Attenuator	SN: 5058 (20k)	05-Apr-16 (No. 217-02292)	Apr-17
Type-N mismatch combination	SN: 5047.2 / 06327	05-Apr-16 (No. 217-02295)	Apr-17
Reference Probe EX3DV4	SN: 7349	15-Jun-16 (No. EX3-7349_Jun16)	Jun-17
DAE4	SN: 601	30-Dec-15 (No. DAE4-601_Dec15)	Dec-16

Secondary Standards	ID #	Check Date (in house)	Scheduled Check
Power meter EPM-442A	SN: GB37480704	07-Oct-15 (No. 217-02222)	In house check: Oct-16
Power sensor HP 8481A	SN: US37292783	07-Oct-15 (No. 217-02222)	In house check: Oct-16
Power sensor HP 8481A	SN: MY41092317	07-Oct-15 (No. 217-02223)	In house check: Oct-16
RF generator R&S SMT-06	SN: 100972	15-Jun-15 (in house check Jun-15)	In house check: Oct-16
Network Analyzer HP 8753E	SN: US37390585	18-Oct-01 (in house check Oct-15)	In house check: Oct-16

Calibrated by: **Johannes Kurikka** **Laboratory Technician**

Approved by: **Katja Pokovic** **Technical Manager**

Signature

*[Signature]*

*[Signature]*

Issued: September 29, 2016

This calibration certificate shall not be reproduced except in full without written approval of the laboratory.





Accredited by the Swiss Accreditation Service (SAS)  
The Swiss Accreditation Service is one of the signatories to the EA  
Multilateral Agreement for the recognition of calibration certificates

Accreditation No.: **SCS 0108**

### Glossary:

TSL	tissue simulating liquid
ConvF	sensitivity in TSL / NORM x,y,z
N/A	not applicable or not measured

### Calibration is Performed According to the Following Standards:

- IEEE Std 1528-2013, "IEEE Recommended Practice for Determining the Peak Spatial-Averaged Specific Absorption Rate (SAR) in the Human Head from Wireless Communications Devices: Measurement Techniques", June 2013
- IEC 62209-1, "Procedure to measure the Specific Absorption Rate (SAR) for hand-held devices used in close proximity to the ear (frequency range of 300 MHz to 3 GHz)", February 2005
- IEC 62209-2, "Procedure to determine the Specific Absorption Rate (SAR) for wireless communication devices used in close proximity to the human body (frequency range of 30 MHz to 6 GHz)", March 2010
- KDB 865664, "SAR Measurement Requirements for 100 MHz to 6 GHz"

### Additional Documentation:

- DASY4/5 System Handbook

### Methods Applied and Interpretation of Parameters:

- Measurement Conditions:** Further details are available from the Validation Report at the end of the certificate. All figures stated in the certificate are valid at the frequency indicated.
- Antenna Parameters with TSL:** The dipole is mounted with the spacer to position its feed point exactly below the center marking of the flat phantom section, with the arms oriented parallel to the body axis.
- Feed Point Impedance and Return Loss:** These parameters are measured with the dipole positioned under the liquid filled phantom. The impedance stated is transformed from the measurement at the SMA connector to the feed point. The Return Loss ensures low reflected power. No uncertainty required.
- Electrical Delay:** One-way delay between the SMA connector and the antenna feed point. No uncertainty required.
- SAR measured:** SAR measured at the stated antenna input power.
- SAR normalized:** SAR as measured, normalized to an input power of 1 W at the antenna connector.
- SAR for nominal TSL parameters:** The measured TSL parameters are used to calculate the nominal SAR result.

The reported uncertainty of measurement is stated as the standard uncertainty of measurement multiplied by the coverage factor  $k=2$ , which for a normal distribution corresponds to a coverage probability of approximately 95%.

## Measurement Conditions

DASY system configuration, as far as not given on page 1.

DASY Version	DASY5	V52.8.8
Extrapolation	Advanced Extrapolation	
Phantom	Modular Flat Phantom	
Distance Dipole Center - TSL	10 mm	with Spacer
Zoom Scan Resolution	dx, dy, dz = 5 mm	
Frequency	2450 MHz $\pm$ 1 MHz	

## Head TSL parameters

The following parameters and calculations were applied.

	Temperature	Permittivity	Conductivity
Nominal Head TSL parameters	22.0 °C	39.2	1.80 mho/m
Measured Head TSL parameters	(22.0 $\pm$ 0.2) °C	37.9 $\pm$ 6 %	1.88 mho/m $\pm$ 6 %
Head TSL temperature change during test	< 0.5 °C	----	----

## SAR result with Head TSL

<b>SAR averaged over 1 cm<sup>3</sup> (1 g) of Head TSL</b>	Condition	
SAR measured	250 mW input power	13.4 W/kg
SAR for nominal Head TSL parameters	normalized to 1W	<b>52.1 W/kg <math>\pm</math> 17.0 % (k=2)</b>

<b>SAR averaged over 10 cm<sup>3</sup> (10 g) of Head TSL</b>	condition	
SAR measured	250 mW input power	6.21 W/kg
SAR for nominal Head TSL parameters	normalized to 1W	<b>24.4 W/kg <math>\pm</math> 16.5 % (k=2)</b>

## Body TSL parameters

The following parameters and calculations were applied.

	Temperature	Permittivity	Conductivity
Nominal Body TSL parameters	22.0 °C	52.7	1.95 mho/m
Measured Body TSL parameters	(22.0 $\pm$ 0.2) °C	51.6 $\pm$ 6 %	2.04 mho/m $\pm$ 6 %
Body TSL temperature change during test	< 0.5 °C	----	----

## SAR result with Body TSL

<b>SAR averaged over 1 cm<sup>3</sup> (1 g) of Body TSL</b>	Condition	
SAR measured	250 mW input power	12.9 W/kg
SAR for nominal Body TSL parameters	normalized to 1W	<b>50.3 W/kg <math>\pm</math> 17.0 % (k=2)</b>

<b>SAR averaged over 10 cm<sup>3</sup> (10 g) of Body TSL</b>	condition	
SAR measured	250 mW input power	6.03 W/kg
SAR for nominal Body TSL parameters	normalized to 1W	<b>23.8 W/kg <math>\pm</math> 16.5 % (k=2)</b>

## Appendix (Additional assessments outside the scope of SCS 0108)

### Antenna Parameters with Head TSL

Impedance, transformed to feed point	$51.9 \Omega + 9.8 j\Omega$
Return Loss	- 20.2 dB

### Antenna Parameters with Body TSL

Impedance, transformed to feed point	$48.8 \Omega + 11.4 j\Omega$
Return Loss	- 18.8 dB

### General Antenna Parameters and Design

Electrical Delay (one direction)	1.126 ns
----------------------------------	----------

After long term use with 100W radiated power, only a slight warming of the dipole near the feedpoint can be measured.

The dipole is made of standard semirigid coaxial cable. The center conductor of the feeding line is directly connected to the second arm of the dipole. The antenna is therefore short-circuited for DC-signals. On some of the dipoles, small end caps are added to the dipole arms in order to improve matching when loaded according to the position as explained in the "Measurement Conditions" paragraph. The SAR data are not affected by this change. The overall dipole length is still according to the Standard.

No excessive force must be applied to the dipole arms, because they might bend or the soldered connections near the feedpoint may be damaged.

### Additional EUT Data

Manufactured by	SPEAG
Manufactured on	October 16, 2002



## DASY5 Validation Report for Head TSL

Date: 29.09.2016

Test Laboratory: SPEAG, Zurich, Switzerland

**DUT: Dipole 2450 MHz; Type: D2450V2; Serial: D2450V2 - SN:725**

Communication System: UID 0 - CW; Frequency: 2450 MHz

Medium parameters used:  $f = 2450$  MHz;  $\sigma = 1.88$  S/m;  $\epsilon_r = 37.9$ ;  $\rho = 1000$  kg/m<sup>3</sup>

Phantom section: Flat Section

Measurement Standard: DASY5 (IEEE/IEC/ANSI C63.19-2011)

DASY52 Configuration:

- Probe: EX3DV4 - SN7349; ConvF(7.72, 7.72, 7.72); Calibrated: 15.06.2016;
- Sensor-Surface: 1.4mm (Mechanical Surface Detection)
- Electronics: DAE4 Sn601; Calibrated: 30.12.2015
- Phantom: Flat Phantom 5.0 (front); Type: QD000P50AA; Serial: 1001
- DASY52 52.8.8(1258); SEMCAD X 14.6.10(7372)

### Dipole Calibration for Head Tissue/Pin=250 mW, d=10mm/Zoom Scan (7x7x7)/Cube 0:

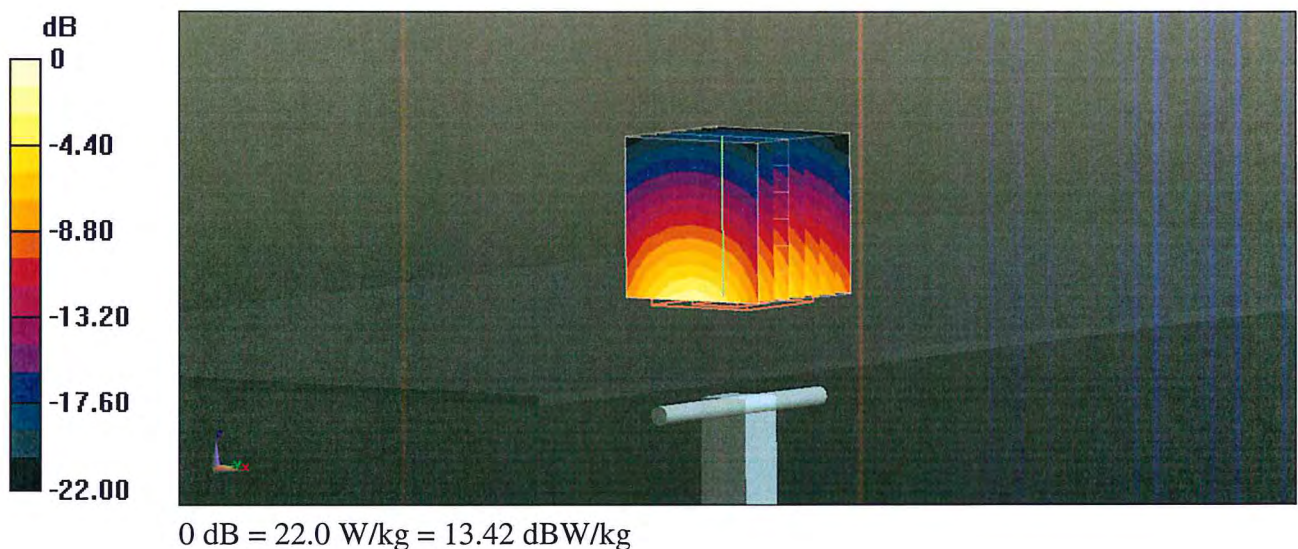
Measurement grid: dx=5mm, dy=5mm, dz=5mm

Reference Value = 113.7 V/m; Power Drift = -0.01 dB

Peak SAR (extrapolated) = 27.2 W/kg

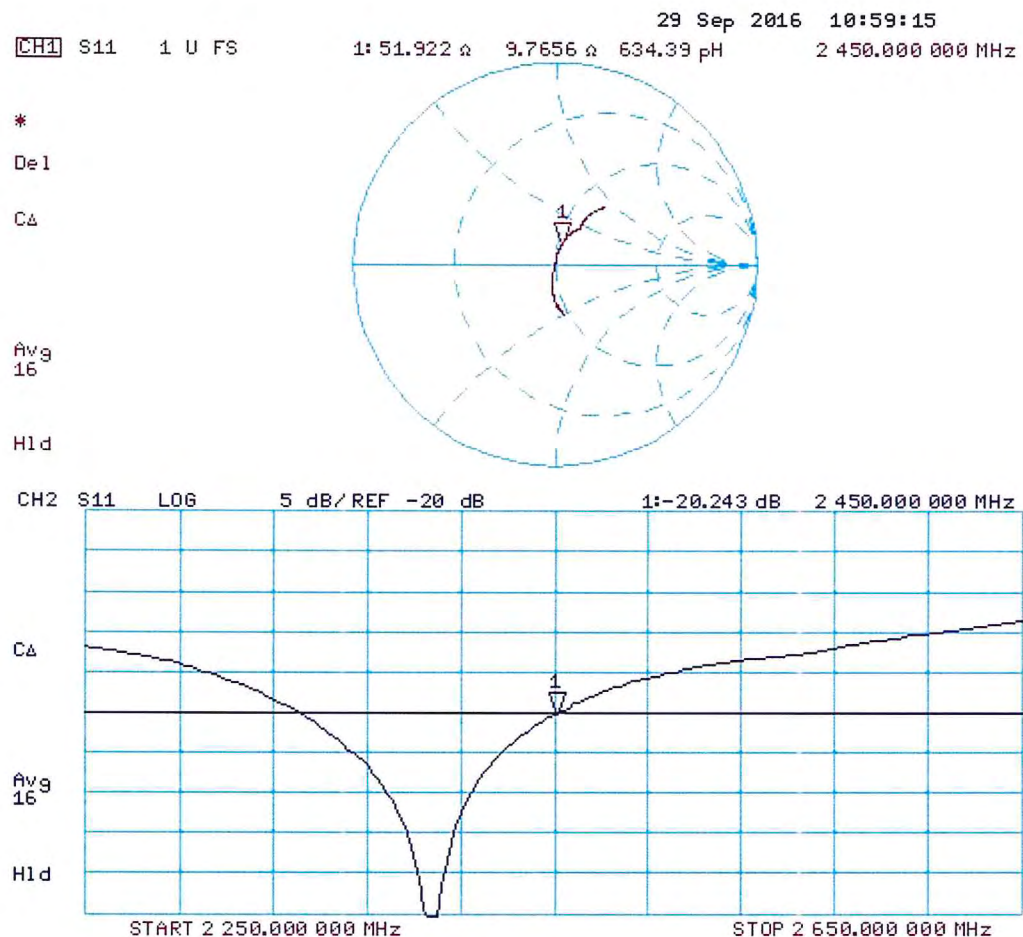
**SAR(1 g) = 13.4 W/kg; SAR(10 g) = 6.21 W/kg**

Maximum value of SAR (measured) = 22.0 W/kg





## Impedance Measurement Plot for Head TSL



## DASY5 Validation Report for Body TSL

Date: 29.09.2016

Test Laboratory: SPEAG, Zurich, Switzerland

**DUT: Dipole 2450 MHz; Type: D2450V2; Serial: D2450V2 - SN:725**

Communication System: UID 0 - CW; Frequency: 2450 MHz

Medium parameters used:  $f = 2450$  MHz;  $\sigma = 2.04$  S/m;  $\epsilon_r = 51.6$ ;  $\rho = 1000$  kg/m<sup>3</sup>

Phantom section: Flat Section

Measurement Standard: DASY5 (IEEE/IEC/ANSI C63.19-2011)

DASY52 Configuration:

- Probe: EX3DV4 - SN7349; ConvF(7.79, 7.79, 7.79); Calibrated: 15.06.2016;
- Sensor-Surface: 1.4mm (Mechanical Surface Detection)
- Electronics: DAE4 Sn601; Calibrated: 30.12.2015
- Phantom: Flat Phantom 5.0 (back); Type: QD000P50AA; Serial: 1002
- DASY52 52.8.8(1258); SEMCAD X 14.6.10(7372)

**Dipole Calibration for Body Tissue/Pin=250 mW, d=10mm/Zoom Scan (7x7x7)/Cube 0:**

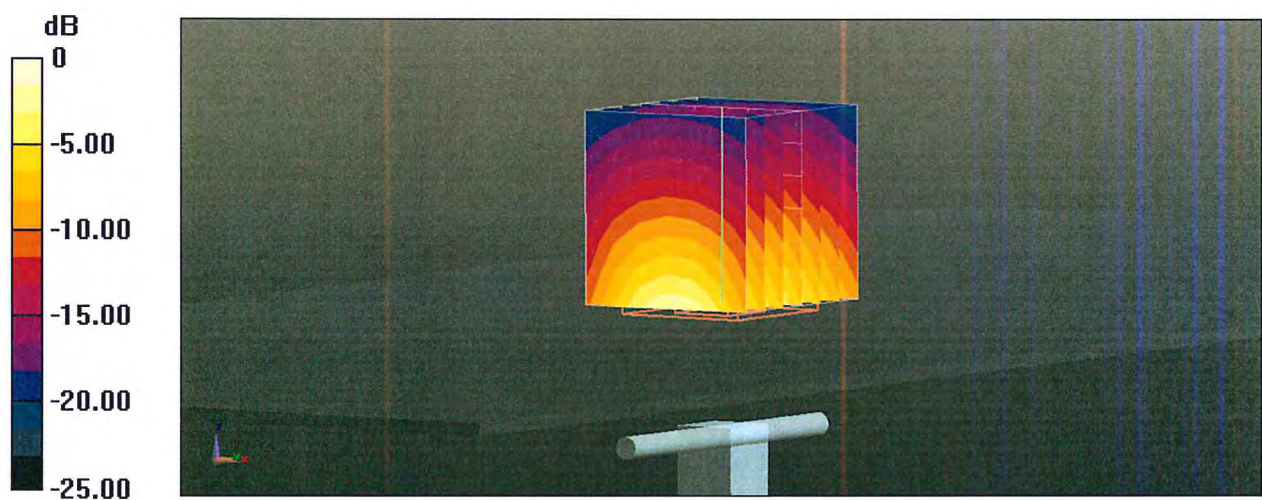
Measurement grid: dx=5mm, dy=5mm, dz=5mm

Reference Value = 105.2 V/m; Power Drift = -0.06 dB

Peak SAR (extrapolated) = 25.7 W/kg

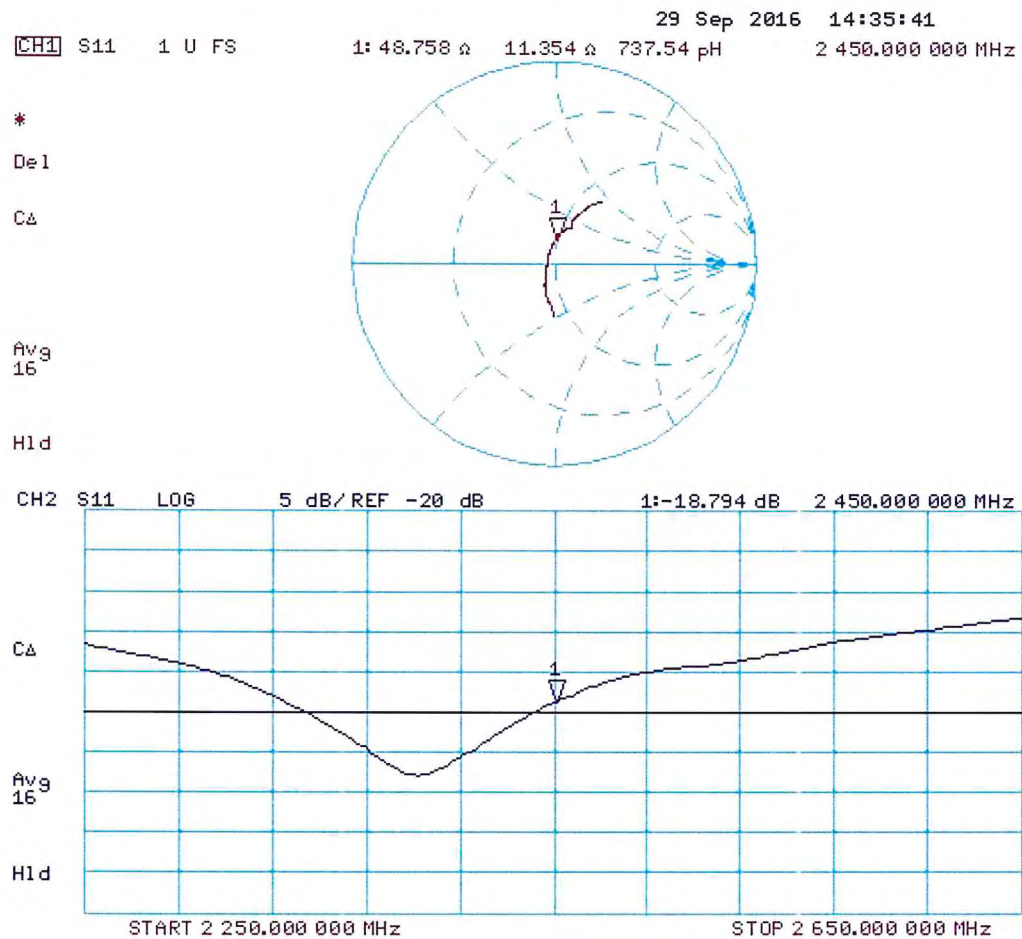
**SAR(1 g) = 12.9 W/kg; SAR(10 g) = 6.03 W/kg**

Maximum value of SAR (measured) = 20.7 W/kg



0 dB = 20.7 W/kg = 13.16 dBW/kg

## Impedance Measurement Plot for Body TSL



**12.6. Tissues-Equivalent Media Recipes**

The SPEAG Broadband Tissue Simulation Liquid HBBL600-6000V6 has been used for Head and Body testing. The composition of this fluid is undisclosed and proprietary to SPEAG.

Visual inspection is made to ensure air bubbles are not trapped during the mixing process. The mixture is calibrated to obtain proper dielectric constant (permittivity) and conductivity of the tissue.