

## Internal photos of the Braster device, model BRA-1.0

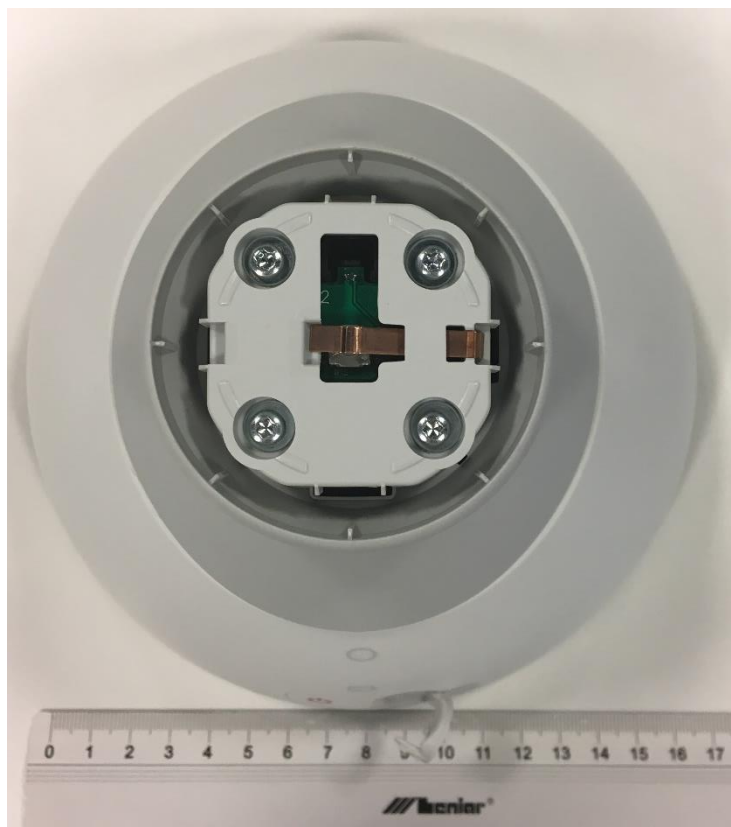


Fig. 1 – View of BRA-1.0 without the Deco Cup

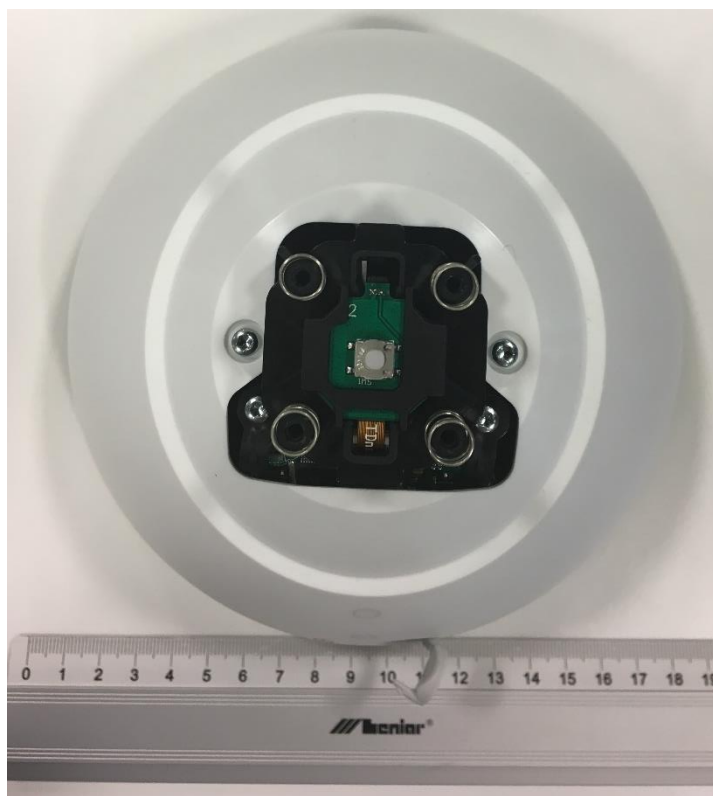


Fig. 2 – View of BRA-1.0 without Hand Grip

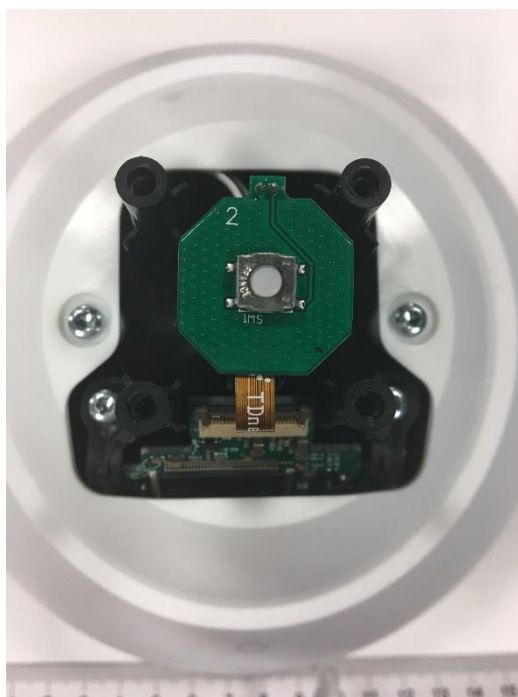


Fig. 3 – View of Top PCB (Top view)

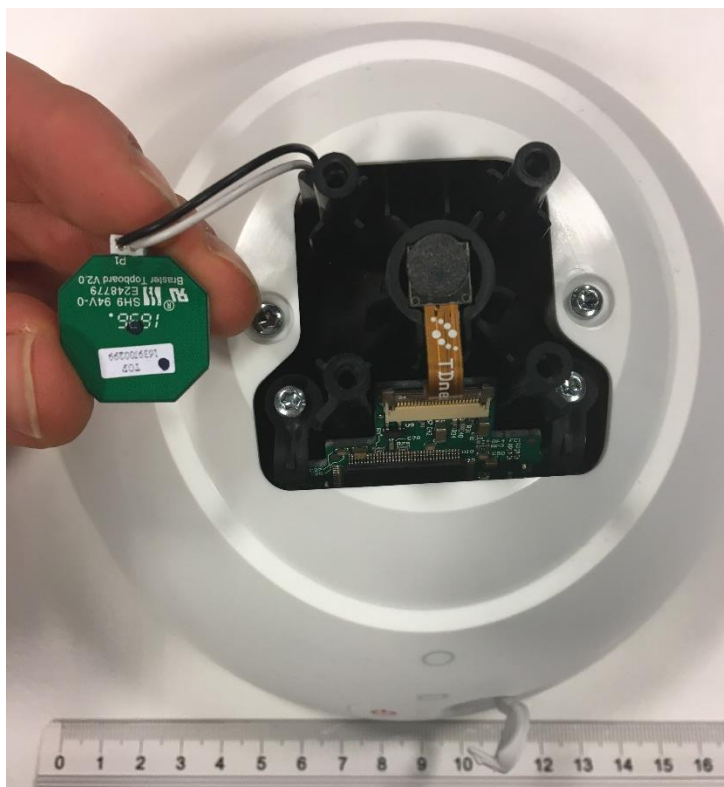


Fig. 4 - View of Top PCB (Bottom view)

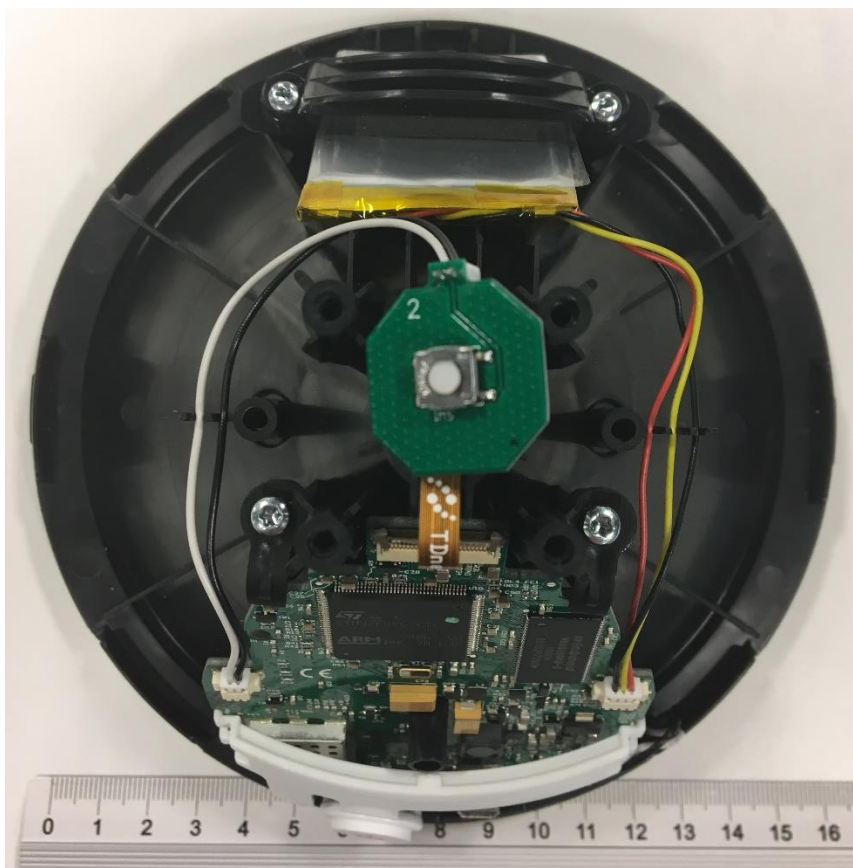


Fig. 5 View of BRA-1.0 without housing



Fig. 6 View of BRA-1.0 without housing



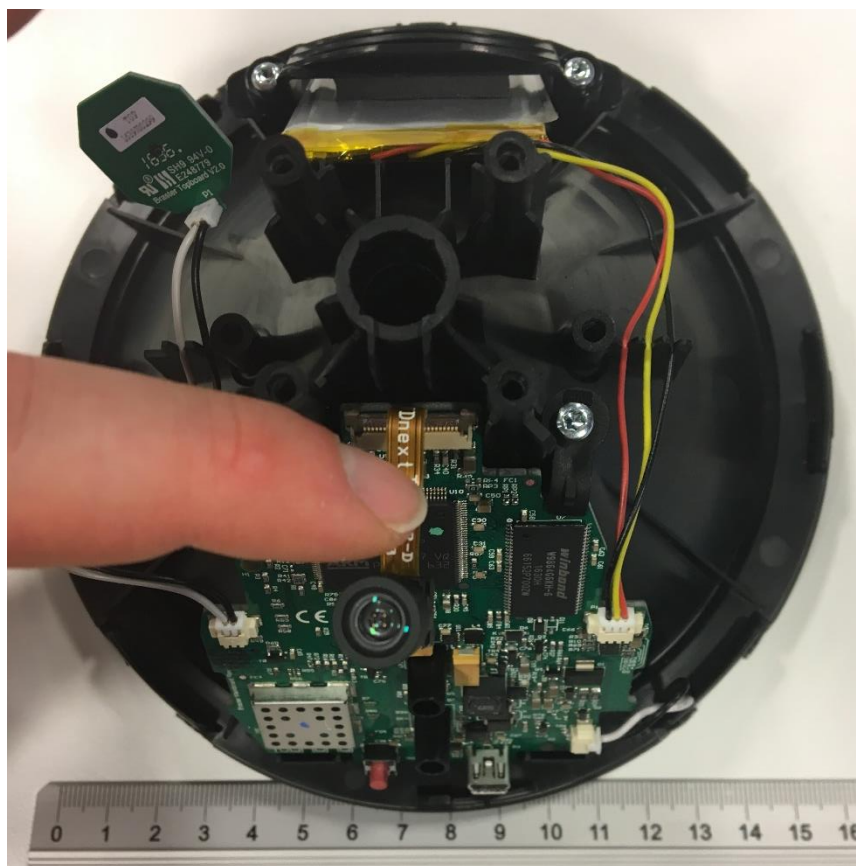


Fig. 7 View of BRA-1.0 without housing

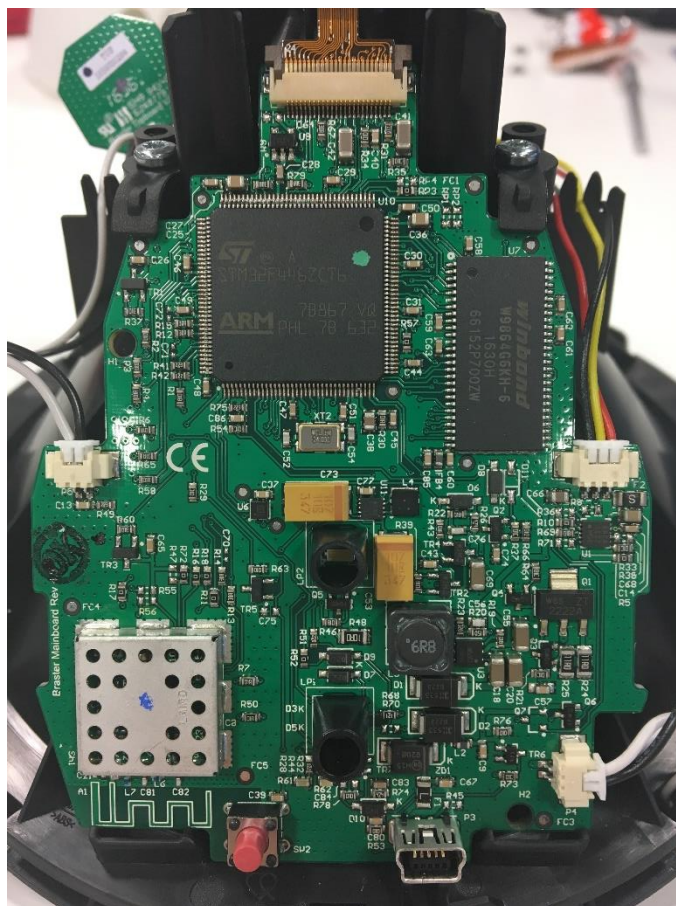


Fig. 8 – View of Main Board PCB fixed on the lighting chamber

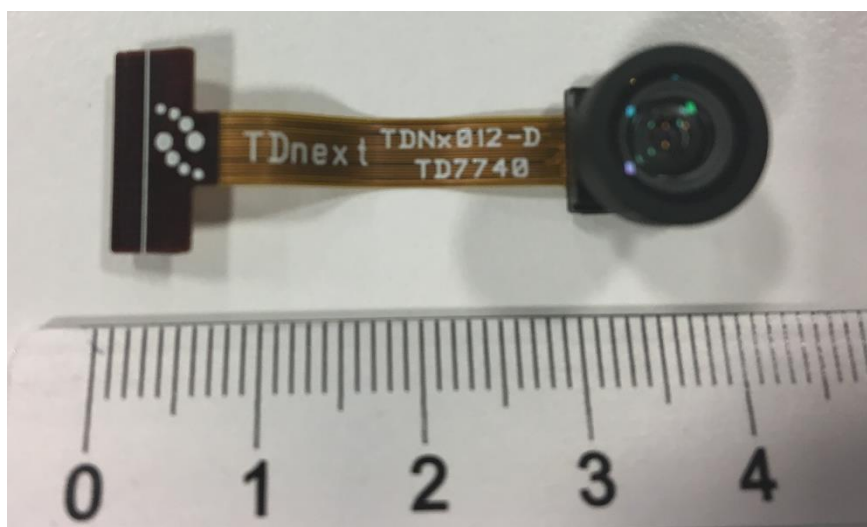


Fig. 9 – Top view of camera

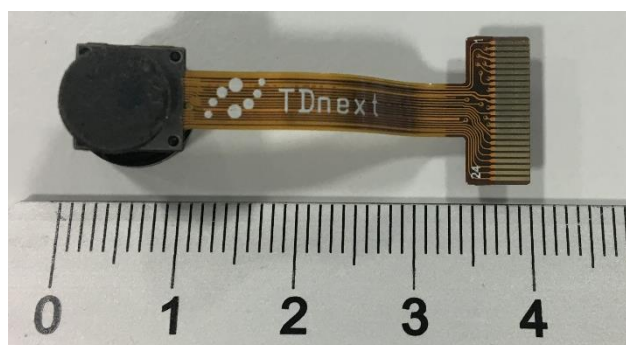


Fig. 10 – Bottom view of camera

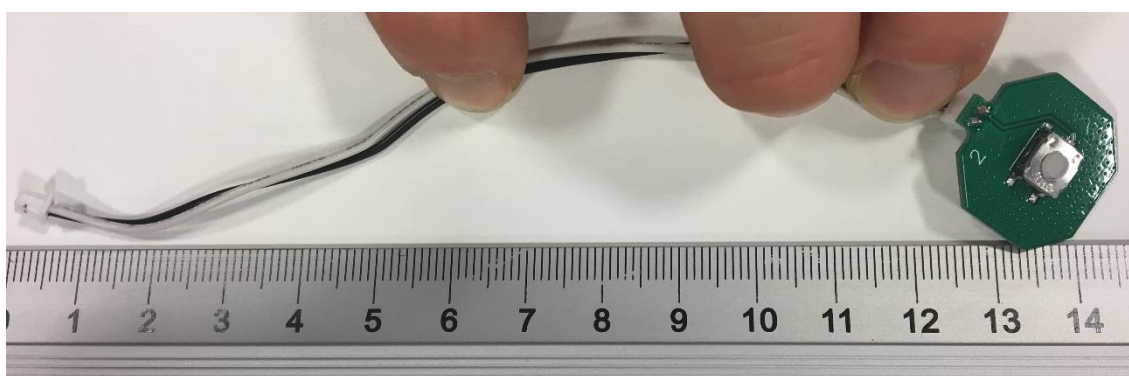


Fig. 11 – Top view of Top PCB



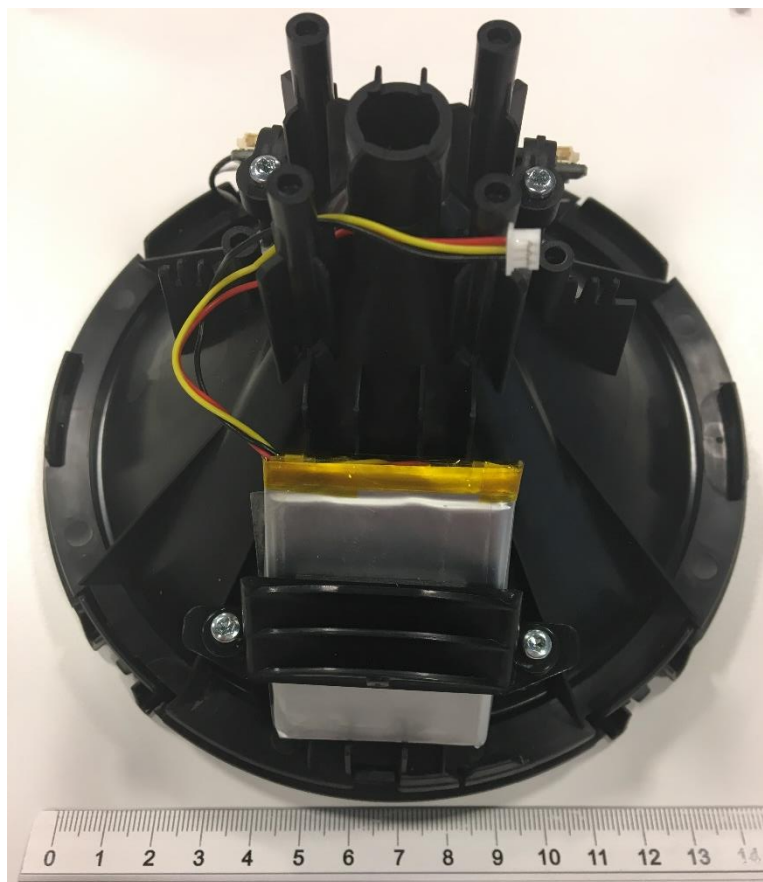


Fig. 12 – The battery fixed on the lighting chamber

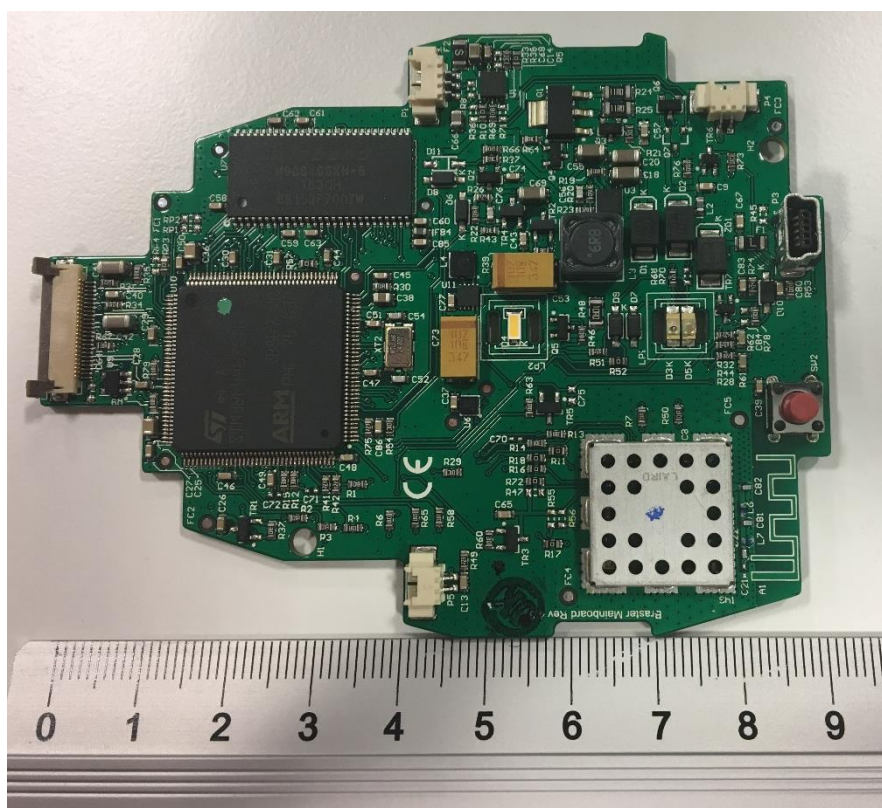


Fig. 13 – Top view of Main Board PCB (With RF shield)

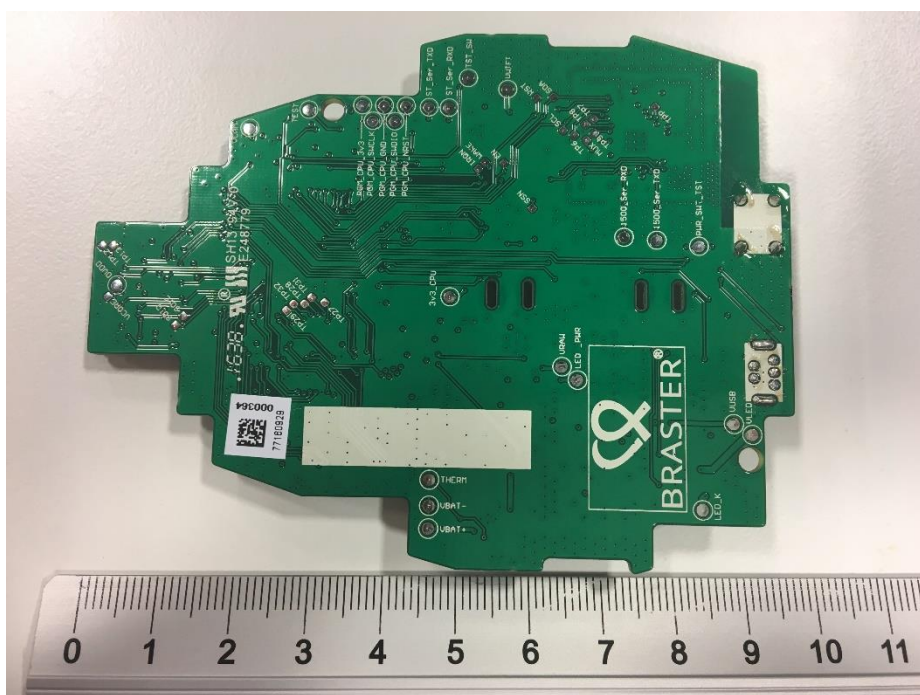


Fig. 14 – Bottom view of Main Board PCB



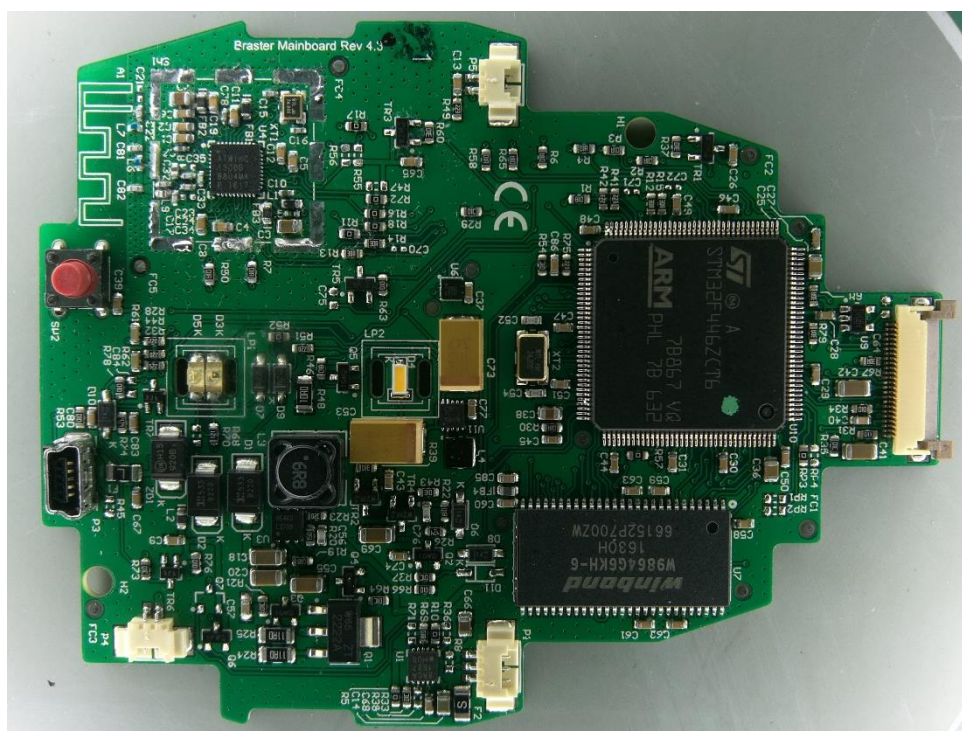


Fig. 15 – Top view of the Main Board PCB (without RF shield)

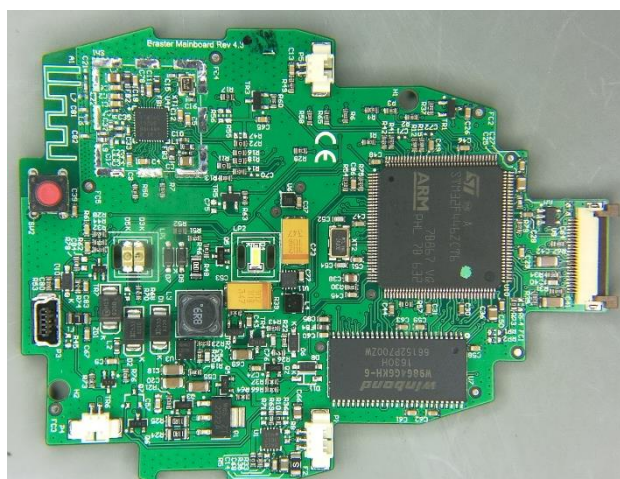


Fig. 16 – Top view of the Main Board PCB (without RF shield)

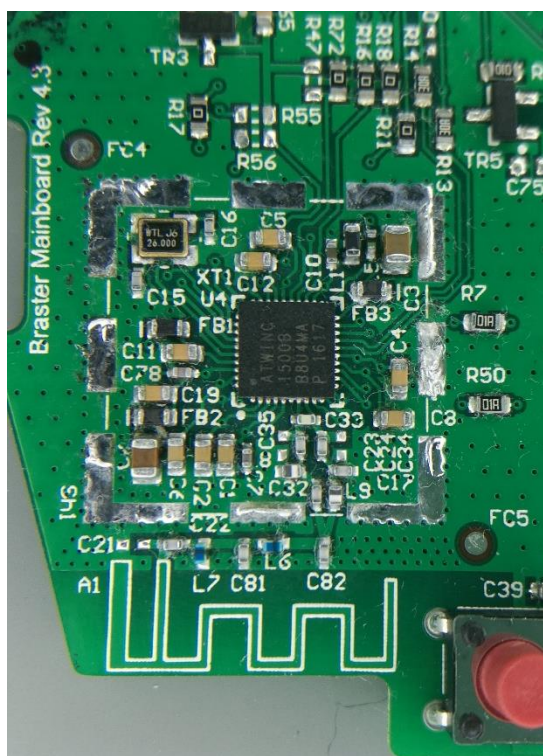


Fig. 17 – View of RF part.



Fig. 18 – Top view of the LED Strip



Fig. 19 – Bottom view of the LED Strip



Fig. 20 – View of LED Strip fixed in the Light Shield



Fig. 21 – View of LED Strip fixed in the Light Shield



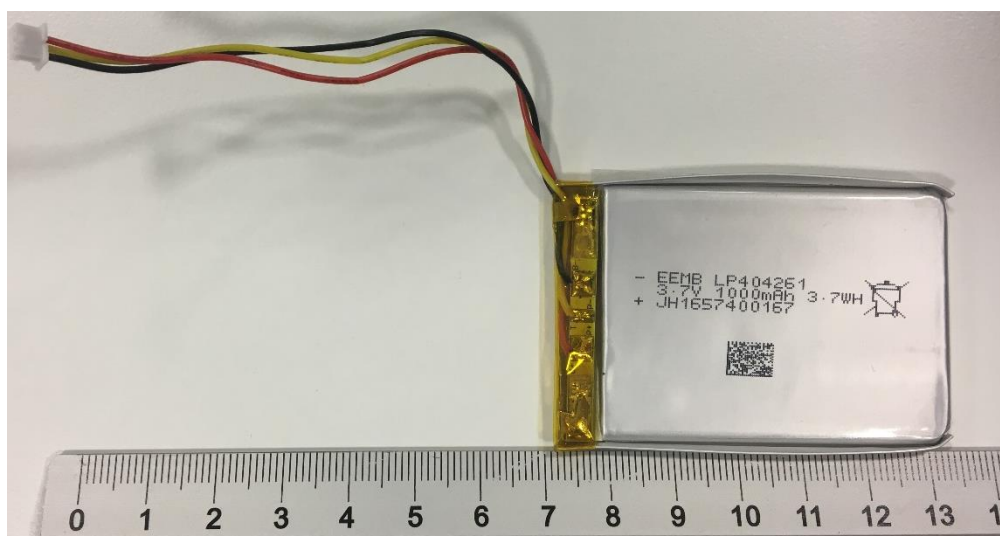


Fig. 22 – View of the top view of battery

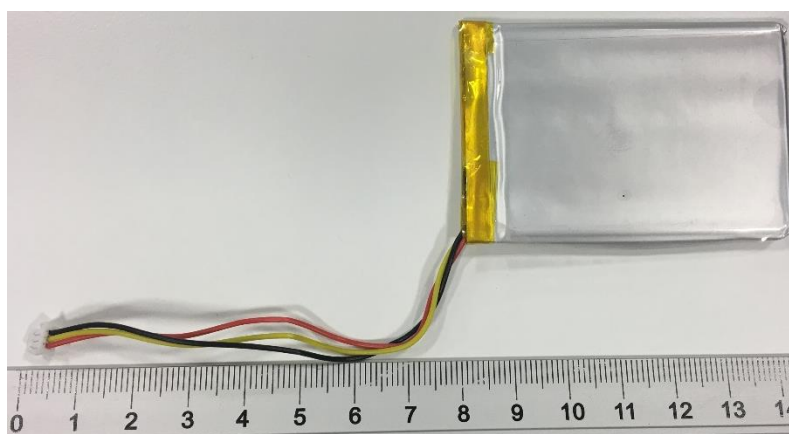


Fig. 23 – View of the bottom view of battery



Fig. 24 – Top view of the lighting chamber



Fig. 25 – Bottom view of the lighting chamber