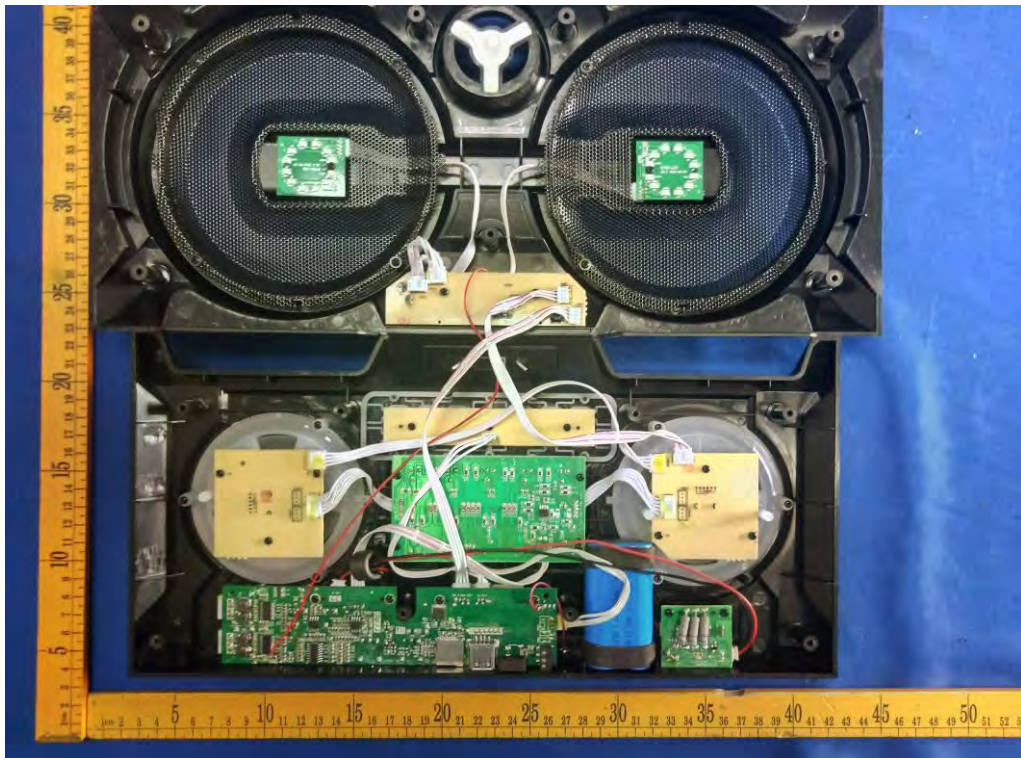
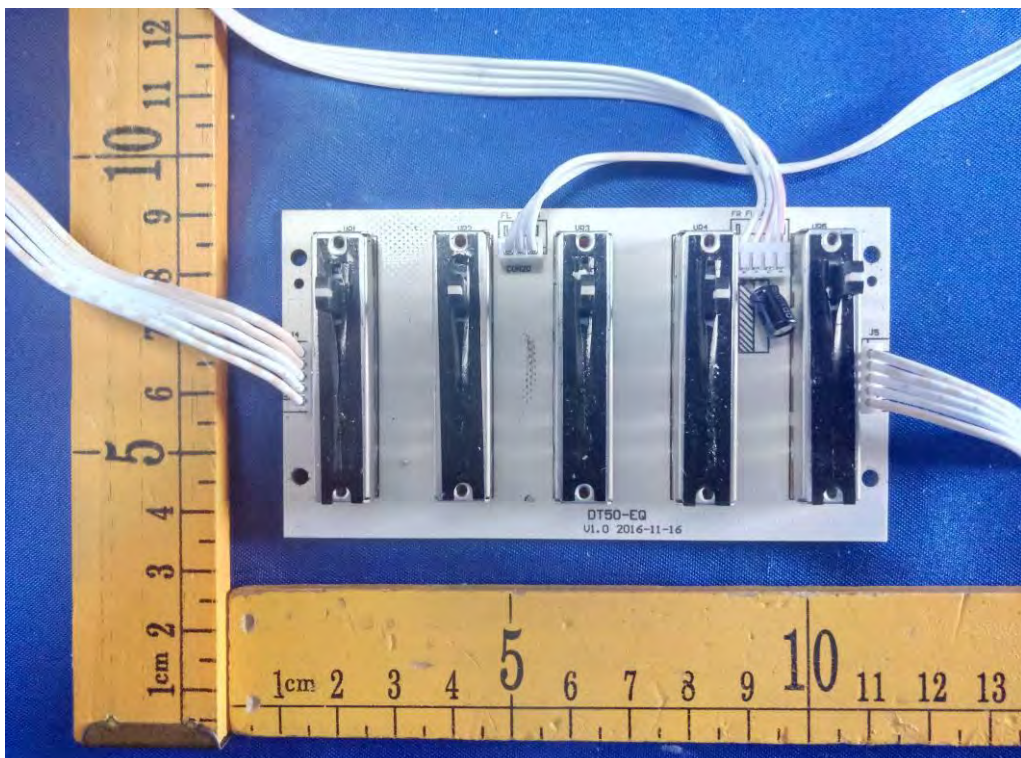


Internal Photos

OPEN VIEW OF EUT



INTERNAL VIEW OF EUT-1

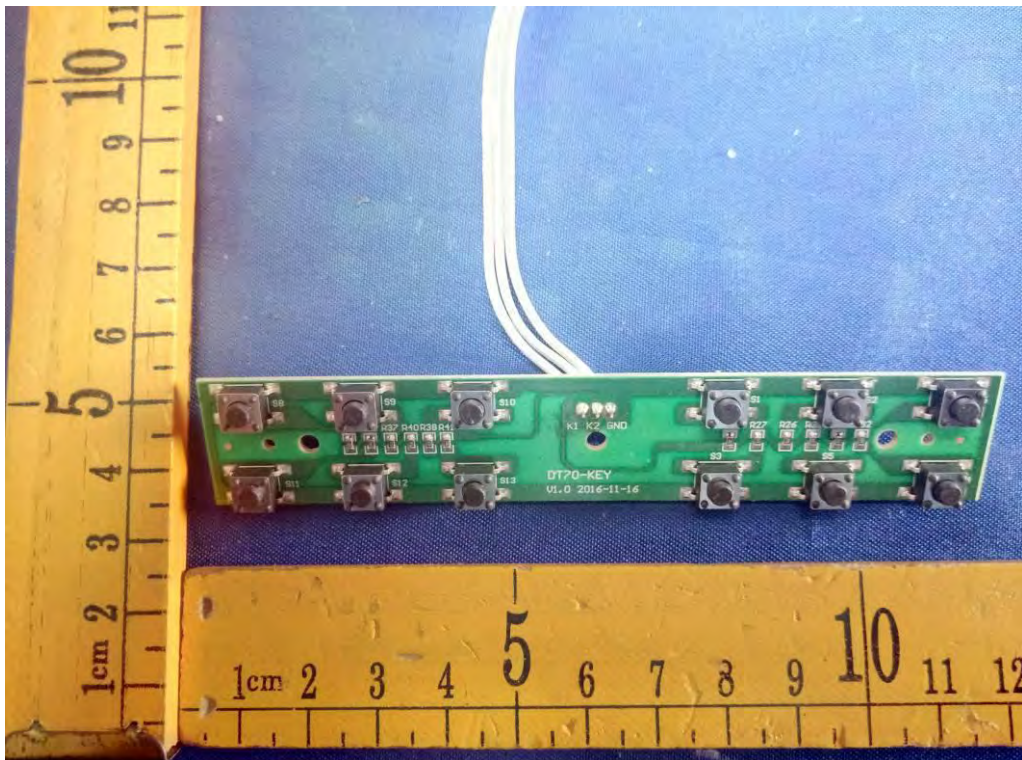


The image shows a green PCB populated with various electronic components. Key components include:

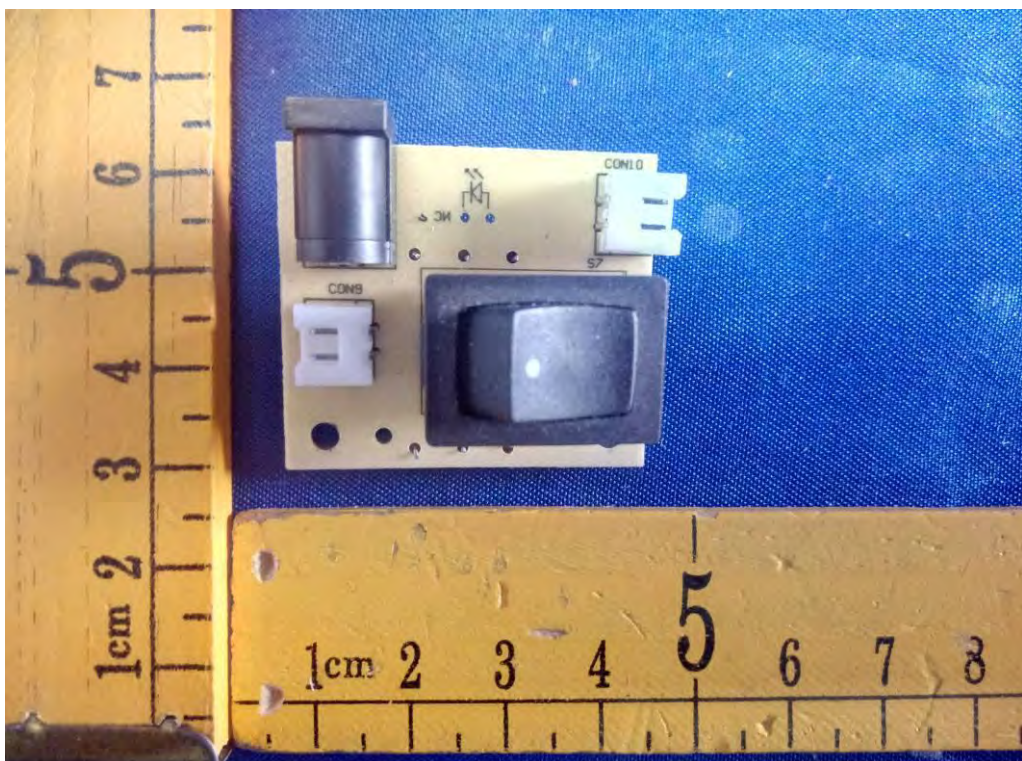
- Integrated Circuits (ICs):** A large IC labeled 'U6' is centrally located. Other ICs include 'U5', 'U7', 'U8', 'U9', 'U10', 'U11', 'U12', 'U13', 'U14', 'U15', 'U16', 'U17', 'U18', 'U19', 'U20', 'U21', 'U22', 'U23', 'U24', 'U25', 'U26', 'U27', 'U28', 'U29', 'U30', 'U31', 'U32', 'U33', 'U34', 'U35', 'U36', 'U37', 'U38', 'U39', 'U40', 'U41', 'U42', 'U43', 'U44', 'U45', 'U46', 'U47', 'U48', 'U49', 'U50', 'U51', 'U52', 'U53', 'U54', 'U55', 'U56', 'U57', 'U58', 'U59', 'U60', 'U61', 'U62', 'U63', 'U64', 'U65', 'U66', 'U67', 'U68', 'U69', 'U70', 'U71', 'U72', 'U73', 'U74', 'U75', 'U76', 'U77', 'U78', 'U79', 'U80', 'U81', 'U82', 'U83', 'U84', 'U85', 'U86', 'U87', 'U88', 'U89', 'U90', 'U91', 'U92', 'U93', 'U94', 'U95', 'U96', 'U97', 'U98', 'U99', 'U100'.
- Resistors:** Numerous resistors are visible, labeled with values such as 'R1', 'R2', 'R3', 'R4', 'R5', 'R6', 'R7', 'R8', 'R9', 'R10', 'R11', 'R12', 'R13', 'R14', 'R15', 'R16', 'R17', 'R18', 'R19', 'R20', 'R21', 'R22', 'R23', 'R24', 'R25', 'R26', 'R27', 'R28', 'R29', 'R30', 'R31', 'R32', 'R33', 'R34', 'R35', 'R36', 'R37', 'R38', 'R39', 'R40', 'R41', 'R42', 'R43', 'R44', 'R45', 'R46', 'R47', 'R48', 'R49', 'R50', 'R51', 'R52', 'R53', 'R54', 'R55', 'R56', 'R57', 'R58', 'R59', 'R60', 'R61', 'R62', 'R63', 'R64', 'R65', 'R66', 'R67', 'R68', 'R69', 'R70', 'R71', 'R72', 'R73', 'R74', 'R75', 'R76', 'R77', 'R78', 'R79', 'R80', 'R81', 'R82', 'R83', 'R84', 'R85', 'R86', 'R87', 'R88', 'R89', 'R90', 'R91', 'R92', 'R93', 'R94', 'R95', 'R96', 'R97', 'R98', 'R99', 'R100'.
- Capacitors:** Several capacitors are present, labeled 'C1', 'C2', 'C3', 'C4', 'C5', 'C6', 'C7', 'C8', 'C9', 'C10', 'C11', 'C12', 'C13', 'C14', 'C15', 'C16', 'C17', 'C18', 'C19', 'C20', 'C21', 'C22', 'C23', 'C24', 'C25', 'C26', 'C27', 'C28', 'C29', 'C30', 'C31', 'C32', 'C33', 'C34', 'C35', 'C36', 'C37', 'C38', 'C39', 'C40', 'C41', 'C42', 'C43', 'C44', 'C45', 'C46', 'C47', 'C48', 'C49', 'C50', 'C51', 'C52', 'C53', 'C54', 'C55', 'C56', 'C57', 'C58', 'C59', 'C60', 'C61', 'C62', 'C63', 'C64', 'C65', 'C66', 'C67', 'C68', 'C69', 'C70', 'C71', 'C72', 'C73', 'C74', 'C75', 'C76', 'C77', 'C78', 'C79', 'C80', 'C81', 'C82', 'C83', 'C84', 'C85', 'C86', 'C87', 'C88', 'C89', 'C90', 'C91', 'C92', 'C93', 'C94', 'C95', 'C96', 'C97', 'C98', 'C99', 'C100'.
- Diodes:** Diodes are labeled 'D1', 'D2', 'D3', 'D4', 'D5', 'D6', 'D7', 'D8', 'D9', 'D10', 'D11', 'D12', 'D13', 'D14', 'D15', 'D16', 'D17', 'D18', 'D19', 'D20', 'D21', 'D22', 'D23', 'D24', 'D25', 'D26', 'D27', 'D28', 'D29', 'D30', 'D31', 'D32', 'D33', 'D34', 'D35', 'D36', 'D37', 'D38', 'D39', 'D40', 'D41', 'D42', 'D43', 'D44', 'D45', 'D46', 'D47', 'D48', 'D49', 'D50', 'D51', 'D52', 'D53', 'D54', 'D55', 'D56', 'D57', 'D58', 'D59', 'D60', 'D61', 'D62', 'D63', 'D64', 'D65', 'D66', 'D67', 'D68', 'D69', 'D70', 'D71', 'D72', 'D73', 'D74', 'D75', 'D76', 'D77', 'D78', 'D79', 'D80', 'D81', 'D82', 'D83', 'D84', 'D85', 'D86', 'D87', 'D88', 'D89', 'D90', 'D91', 'D92', 'D93', 'D94', 'D95', 'D96', 'D97', 'D98', 'D99', 'D100'.

The board is populated with numerous other components, including transistors, op-amps, and various passive components. The components are arranged in a dense, organized manner, typical of a custom PCB design. The board is placed on a blue surface, and a yellow ruler is visible on the left and bottom edges for scale. White ribbon cables are connected to the board's edges.

INTERNAL VIEW OF EUT-4



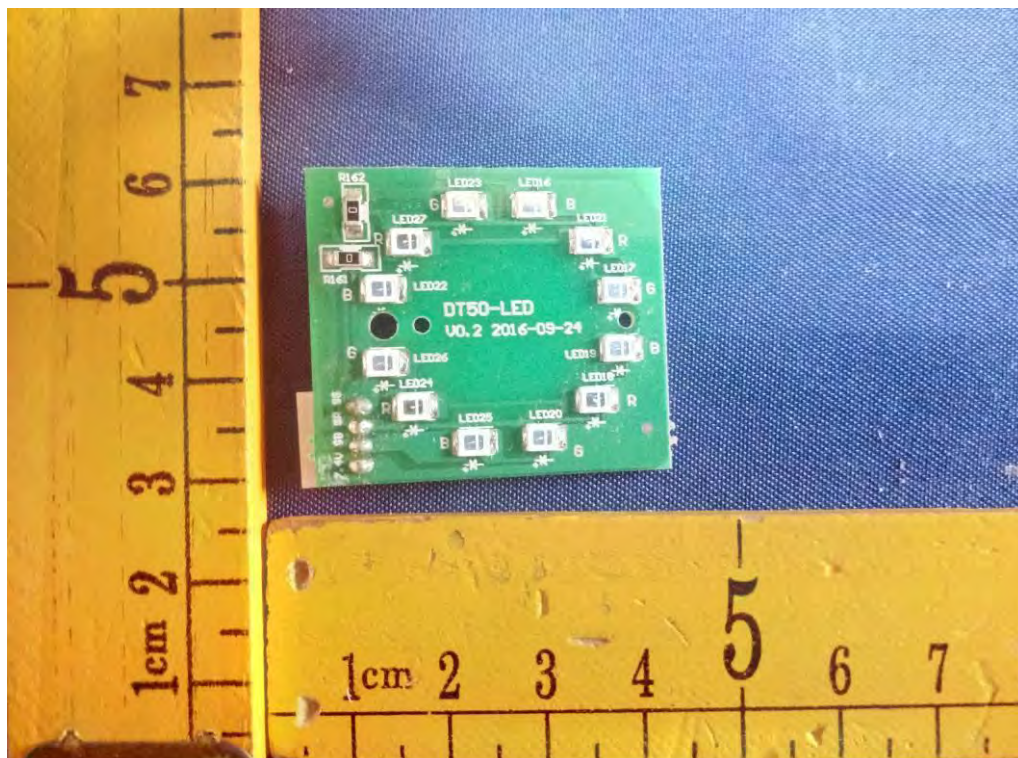
INTERNAL VIEW OF EUT-5



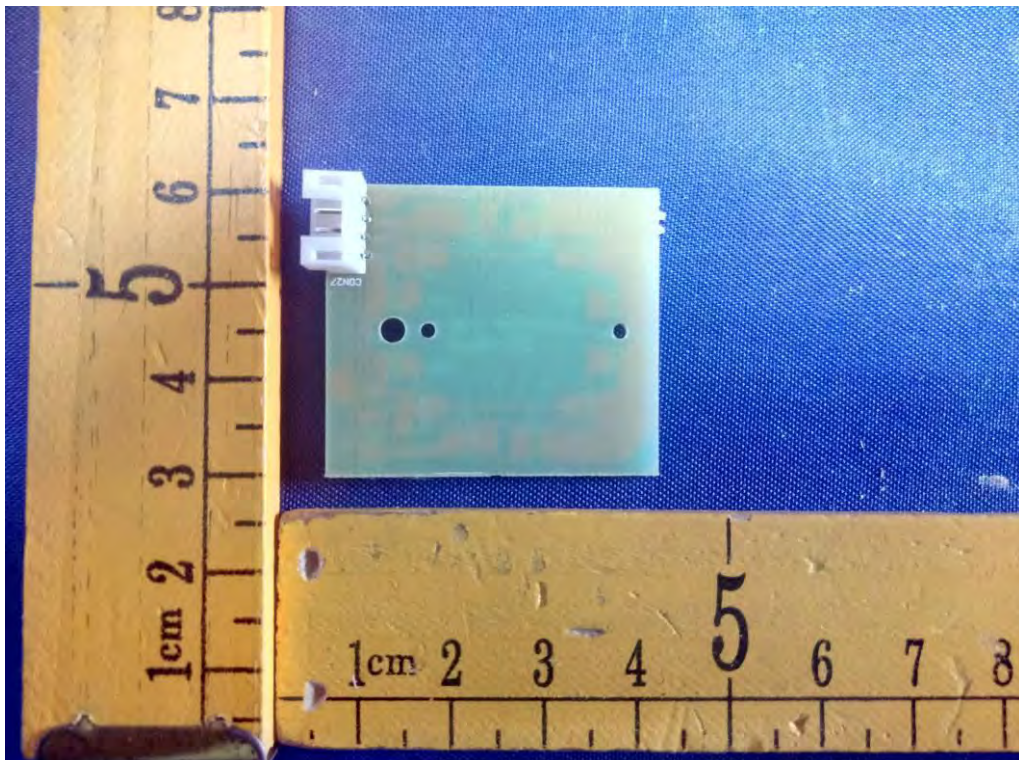
INTERNAL VIEW OF EUT-6



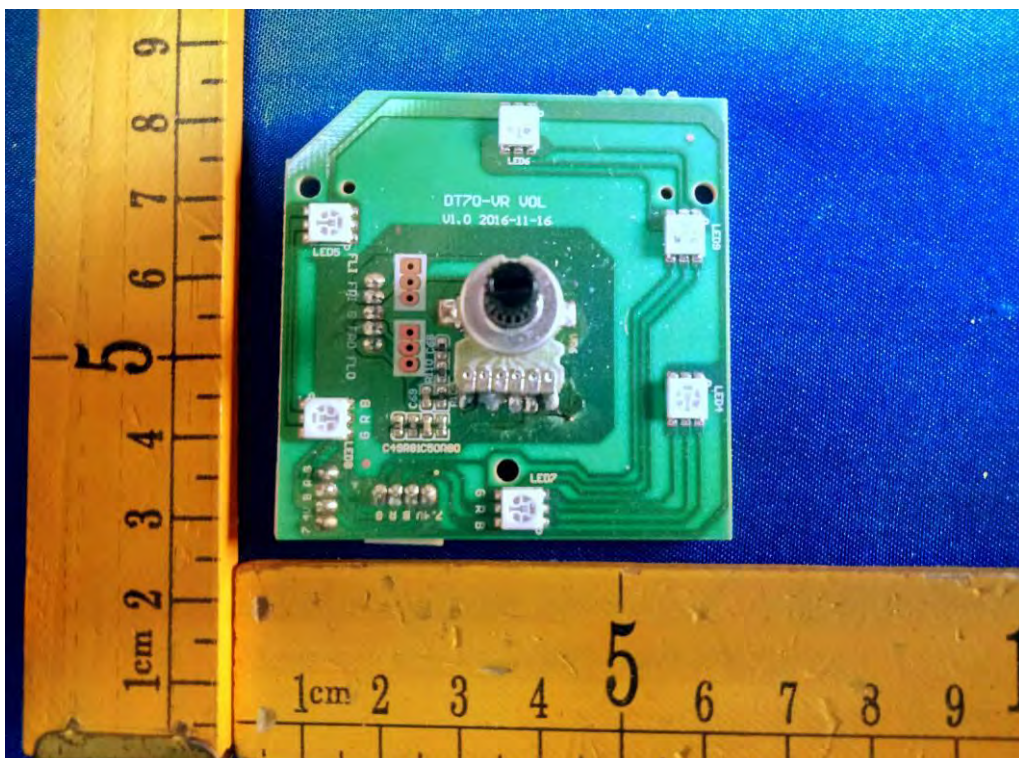
INTERNAL VIEW OF EUT-7



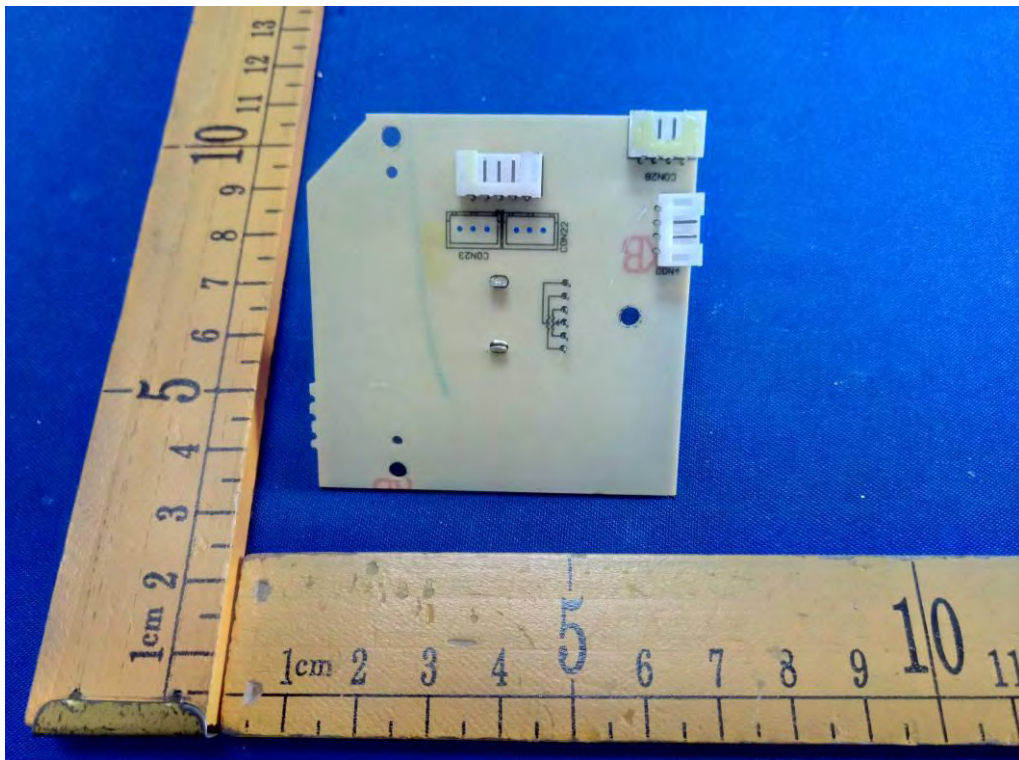
INTERNAL VIEW OF EUT-8



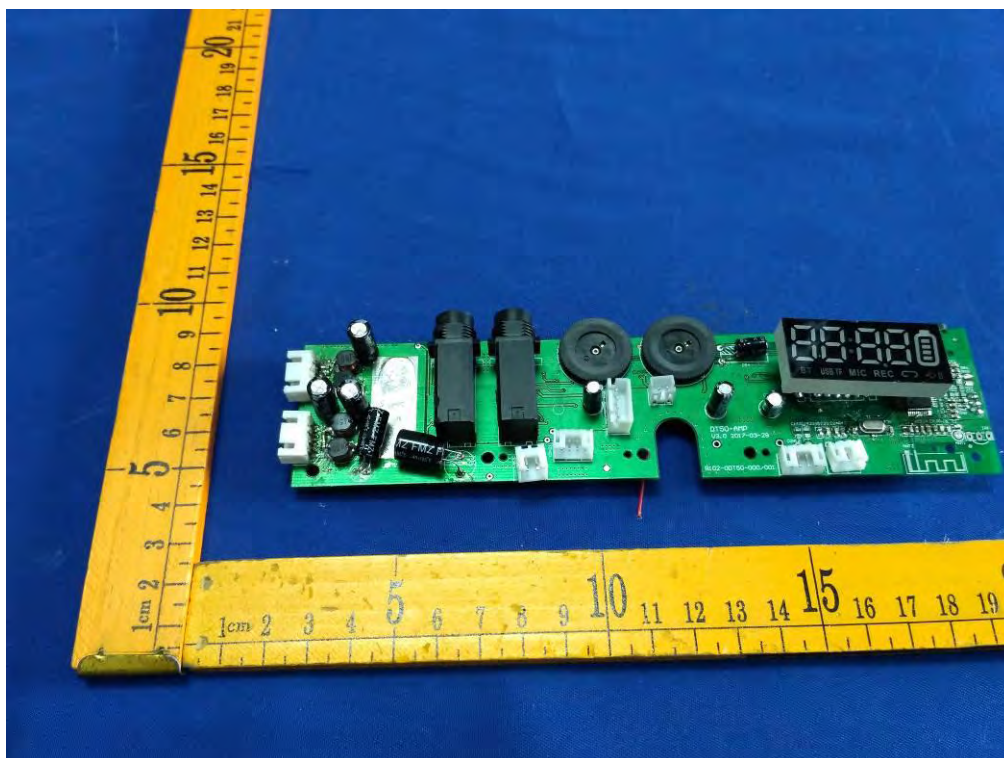
INTERNAL VIEW OF EUT-9



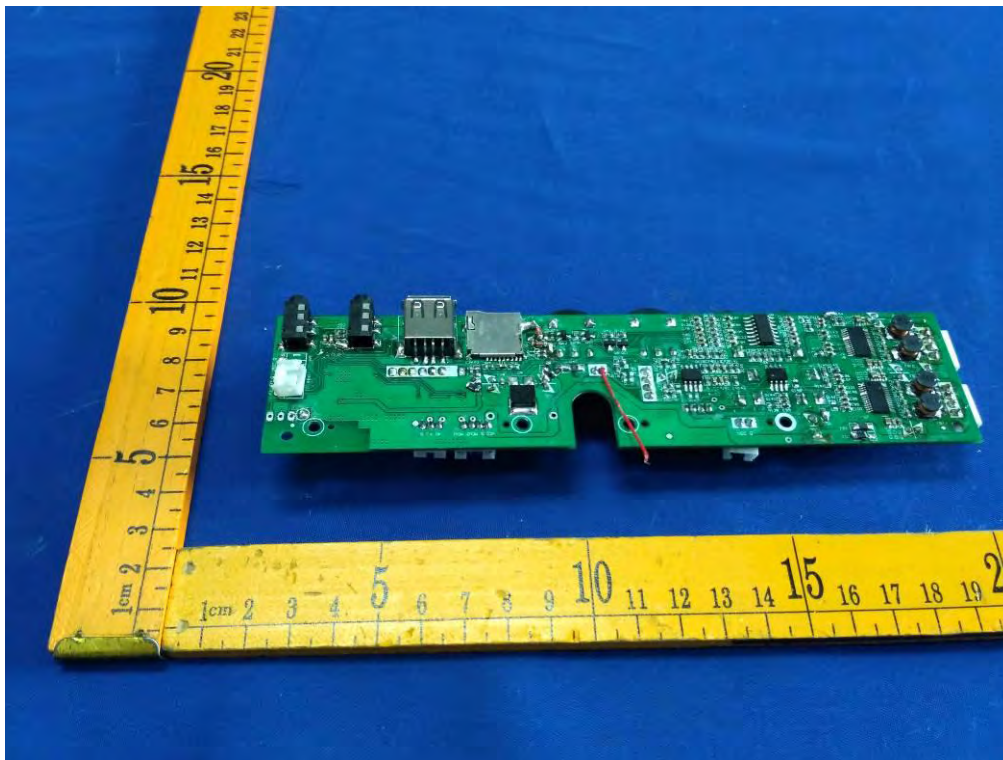
INTERNAL VIEW OF EUT-10



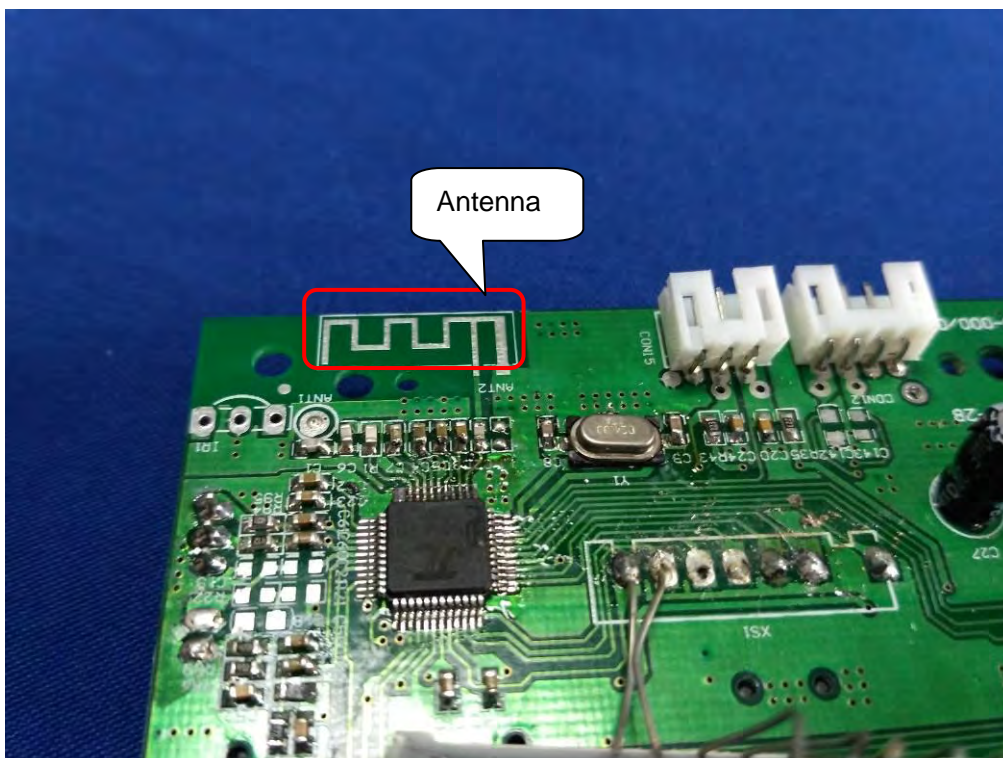
INTERNAL VIEW OF EUT-11



INTERNAL VIEW OF EUT-12



INTERNAL VIEW OF EUT-13



VIEW OF ADAPTER-1



VIEW OF ADAPTER-2

