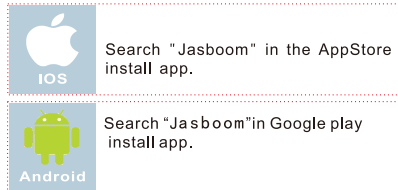


# Quick Guide for Watching

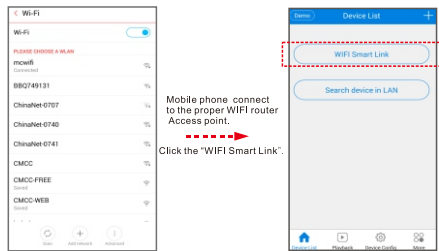
## 1. Software installation & download and install APP for smart phones



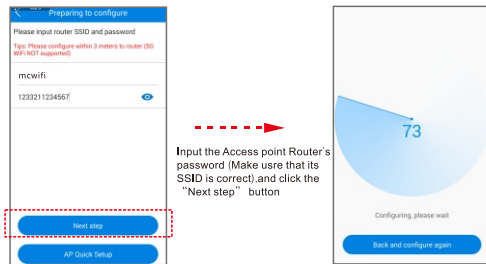
## 2. Add & watch

### Mode 1: WIFI smart link

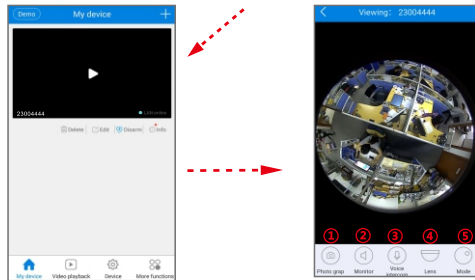
The VR Camera default Mode is: WIFI Smart Link, pressing the VR Camera "Reset" button for 7 seconds will restore the default setting into the "WIFI Smart Link".



1



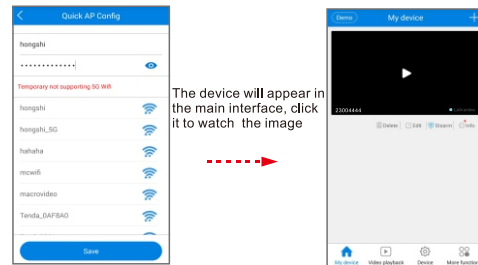
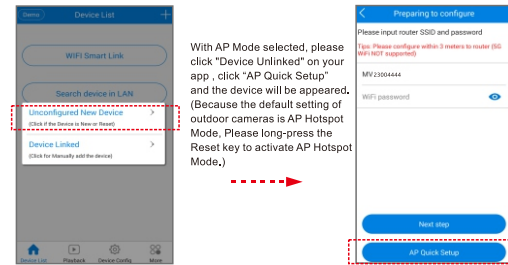
After you doing that, the VR Camera will try to connect the Access Point Router with the SSID and password you have inputted, The process will take 30~60 seconds, after the VR Camera connecting the WIFI Access Point router successfully, the VR Camera ID will be added to the device list. Last, you can click the item on the device list, then you can see the live video.



1 Screenshot 2 Sound 3 Voice Intercom 4 Lens 5 Mode

2

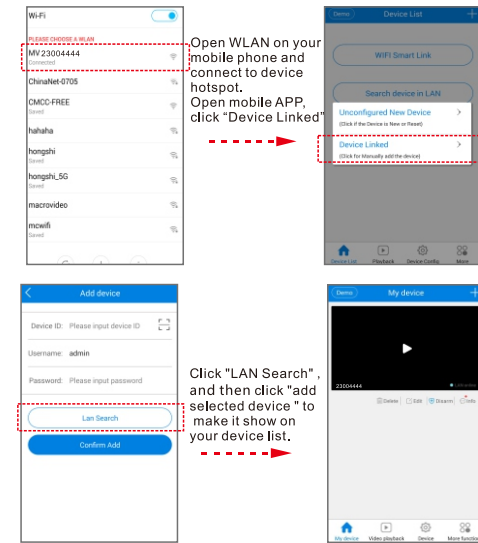
Mode 2 : Quick AP config (this mode can not be supported by iPhone, iPhone user has to connect the camera AP mode manually)



3

### Mode 3: AP Hotspot Mode

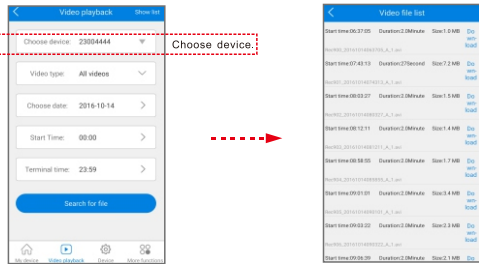
Pressing the VR Camera "Reset" button for 7 seconds will restore the default setting into the "WIFI Smart Link"; and then pressing the "Reset" button on the camera for 1-2 seconds enters "AP hotspot mode".



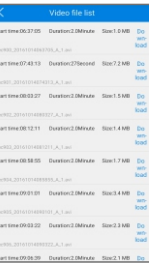
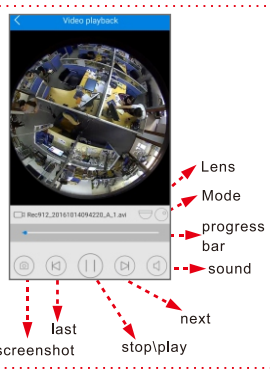
click "device configuration" - "network Settings", tick "AP hot mode", choose the WIFI router, and fill in the router WIFI password, and save, routing connection done" configuration is completed.

4

### 3.Video playback



Search the record files



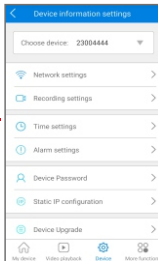
The record files



record playback

### 4.Device settings

After choosing device, you can configure it. The introduction to various functions is as follows.



#### ①Network Setting:

AP mode and station mode can be interchanged;

**AP mode** : Set the VR Camera work as a independent Access Point (Hotpot), (The VR Camera work as a WIFI Access Point, the prefix is "MV", ex, "MV31000000")

**Station mode** : Set the Camera work as wifi station, the camera will connect the wifi router you selected, and you can access your camera by internet

#### ②Record Setting:

**automatic record** : continuous recording;

**record-on-alarm** : record with alarm event;

**audio record** : record the sound;

**record resolution** : standard-definition(VGA), high-definition(960P) (choose high-definition record, with big record files and short storage time in memory card)

#### ③Alarm settings:

**disarm switch** : Close or Open the alarm;

**voice master switch** : master switch for all voice prompts;

**alarm voice prompts** : switch for movement alarm voice;

**voice language** : enable the voice prompts

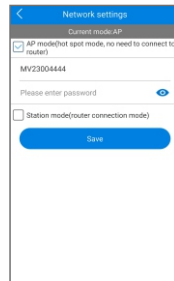
#### ④Date & Time

be able to adjust the time of device ;

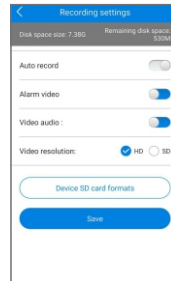
⑤ **Device Password** : able to modify the username and password of camera ;

⑥ **Static IP configuration**: Equipment can be static IP is set to manual configuration or automatic configuration;

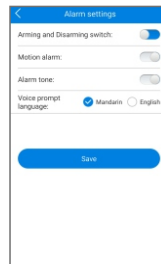
⑦ **Version information** : able to obtain information of device system and hardware ;



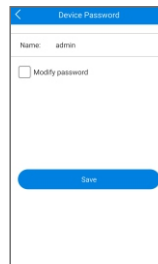
①Network Setting



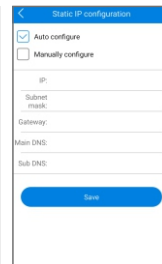
②Record Setting



③Alarm settings

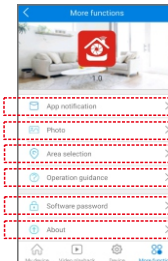


⑤ Device Password



⑥ Static IP Configuration

### 5.More functions



Mobile phone alarm notification setting

View, share and delete pictures or videos

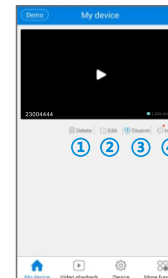
Server Area Selection

Check device configuration instruction and FAQs

Set the APP gesture password

Check the latest version of the APP and update online

### 6.Modify and delete



① **Delete** : Be able to delete one device entry individually

② **Edit** : Be able to modify ID number, username and password of the device (if you enter error username and password, you can modify it here directly, rather than add another device entry)

③ **Disarm**: Arming and disarming of equipment

④ **info** : Can view the snap pictures

## **FCC Caution:**

Any Changes or modifications not expressly approved by the party responsible for compliance could void the user's authority to operate the equipment.

This device complies with part 15 of the FCC Rules. Operation is subject to the following two conditions: (1) This device may not cause harmful interference, and (2) this device must accept any interference received, including interference that may cause undesired operation.

Note: This equipment has been tested and found to comply with the limits for a Class B digital device, pursuant to part 15 of the FCC Rules. These limits are designed to provide reasonable protection against harmful interference in a residential installation. This equipment generates, uses and can radiate radio frequency energy and, if not installed and used in accordance with the instructions, may cause harmful interference to radio communications. However, there is no guarantee that interference will not occur in a particular installation. If this equipment does cause harmful interference to radio or television reception, which can be determined by turning the equipment off and on, the user is encouraged to try to correct the interference by one or more of the following measures:

- Reorient or relocate the receiving antenna.
- Increase the separation between the equipment and receiver.
- Connect the equipment into an outlet on a circuit different from that to which the receiver is connected.
- Consult the dealer or an experienced radio/TV technician for help.

## **FCC Radiation Exposure Statement:**

This equipment complies with FCC radiation exposure limits set forth for an uncontrolled environment .This equipment should be installed and operated with minimum distance 20cm between the radiator& your body.

## ISED WARNING

The device is compliance with RF exposure guidelines, users can obtain Canadian information on RF This device complies with Innovation, Science, and Economic Development Canada licence-exempt RSS standard(s). Operation is subject to the following two conditions:

- (1) this device may not cause interference, and
- (2) this device must accept any interference, including interference that may cause undesired operation of the device.

Le présent appareil est conforme aux CNR d' Innovation, Sciences et Développement économique Canada applicables aux appareils radio exempts de licence. L'exploitation est autorisée aux deux conditions suivantes :

- (1) l'appareil nedit pas produire de brouillage, et
- (2) l'utilisateur de l'appareil doit accepter tout brouillage radioélectrique subi, même si le brouillage est susceptible d'en compromettre le fonctionnement.

Radio apparatus containing digital circuitry which can function separately from the operation of a transmitter or an associated transmitter, shall comply with ICES-003. In such cases, the labeling requirements of the applicable RSS apply, rather than the labelling requirements in ICES-003.

This Class B digital apparatus complies with Canadian ICES-003.

Cet appareil numérique de la classe B est conforme à la norme NMB-003 du Canada.

The device is compliance with RF exposure guidelines, users can obtain Canadian information on RF exposure and compliance.

The minimum distance from body to use the device is 20cm.

Le présent appareil est conforme

Après examen de ce matériel aux conformité ou aux limites d'intensité de champ RF, les utilisateurs peuvent sur l'exposition aux radiofréquences et la conformité and compliance d'acquérir les informations correspondantes.

La distance minimale du corps à utiliser le dispositif est de 20cm.