

# Smart Sweeping Robot

HXS-G1

## Table of Contents

1	Important Safety Instructions.....	1
2	Product Components.....	2
2.1	The main machine and accessories.....	2
2.2	The main machine.....	3
2.3	Charging station.....	3
2.4	Dustbin.....	4
2.5	Water tank.....	4
2.6	Side brush.....	4
2.7	Remote control.....	4
3	Product Operations.....	6
3.1	Quick start guide.....	6
3.2	Start/Pause/Standby mode.....	7
3.3	Plan mode.....	7
3.4	Cleaning mode.....	8
3.5	Water tank and mop operation.....	9
4	Product Maintenances.....	11
4.1	Cleaning of side brush.....	11
4.2	Cleaning of dustbin and filter.....	11
4.3	Cleaning of sensors and charging poles.....	12
4.4	Cleaning of main brush.....	12
4.5	Water tank maintenance.....	13
4.6	Battery replacement.....	13
5	Troubles Shooting.....	14
6	Product Parameters.....	15

# 1 Important Safety Instructions

Please read the following safety instructions before using this product to avoid damage.



**Warning!** Violation of safety instructions may cause severe personal casualty and property loss.

Do not put weight on the power cord or bend the power cord, otherwise may cause electric shock or fire.

Always use the original charger with this product, otherwise may cause product damage, electric shock or fire.

Do not touch the power cord with wet hand, otherwise may cause electric shock.

Keep the product away from heat or inflammables.

Do not touch wheels and brushes when the product is working and keep your clothes and hair away from the product when it is working.

Do not attempt to disassemble or revise the main machine, otherwise may cause fire, electric shock or personal injury.



**Attention!** Violation of safety instructions may cause personal injury and product damage.

Make sure the charger plugged in the socket tightly, otherwise may cause electric shock, short-circuit, smoke or fire.

Do not use the product to vacuum stone, big waste paper, burning cigarette ends or metals.

Do not stand or sit on the product, otherwise may cause product damage or personal injury.

Do not use the product on an easy falling place such as table or chair to avoid product damage.

Clear up all fragile, braided fabrics, glasses or bottles before use it, otherwise may cause damage.

Do not use the product to vacuum water or other liquids, otherwise may cause product damage.

Please take careful of children when use the product to avoid scaring or injury.

This product is intended to be an indoor appliance. Never use it outdoor.

Please switch the product off when you will not use it for a long time.

Do not use it in public commercial places.

When people with disabilities (body perception and thinking ability defects) and children using, need to be operated under the guardian to accompany with product use and get the related instructions.

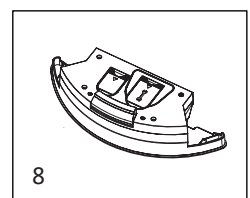
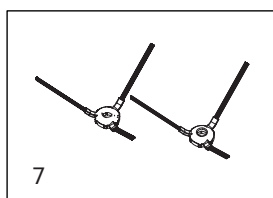
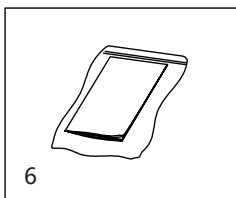
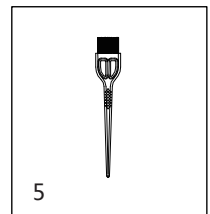
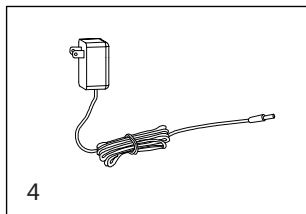
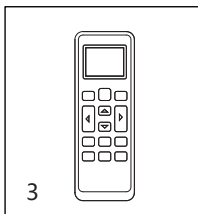
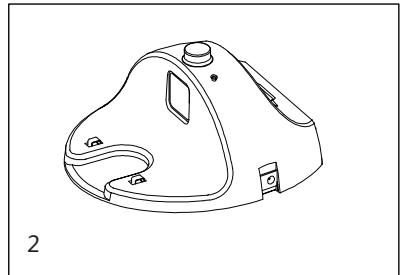
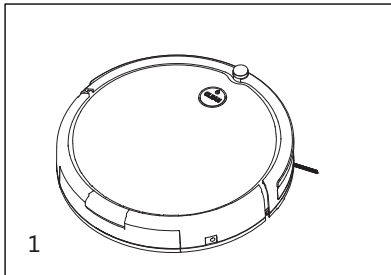
## 2 Product Components

### 2.1 The main machine and accessories

No.	Name	Quantity
1	Main machine	1pc
2	Charging station	1pc
3	Remote control	1pc
4	Adapter	1pc
5	Cleaning brush	1pc
6	Insturction manual	1pc
7	Side brush	2pcs
8	Water tank	1pc

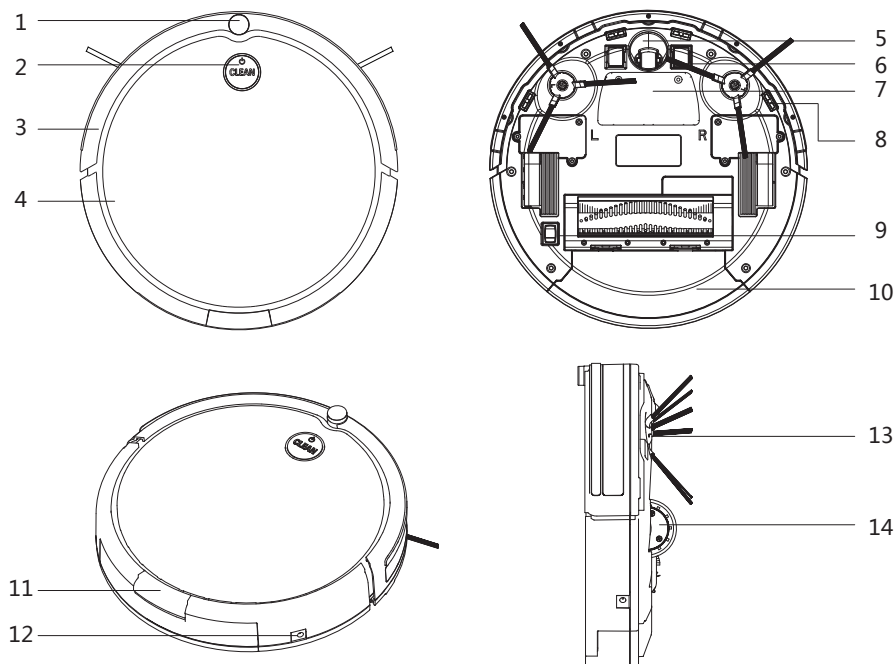
#### Attention:

Please take actual product shall prevail on the basis of not less than the above accessories.



## 2 Product Components

### 2.2 Main machine



1. Signal receiving sensor

2. Clean button

3. Bumper

4. Panel

5. Universal wheel

6. Charging poles

7. Battery cover

8. Stair detection sensor

9. Main brush

10. Dustbin

11. Dustbin cover button

12. Charging socket

13. Side brush

14. Driving wheel

### 2.3 Charging station

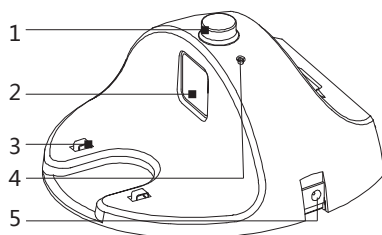
1. Signal receiver

2. Signal projector

3. Charging poles

4. Indication light

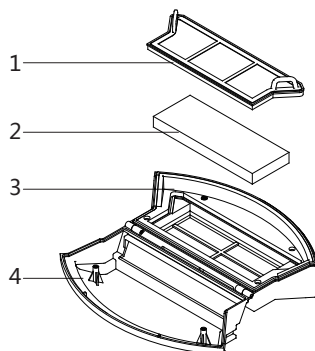
5. Adapter socket



## 2 Product Components

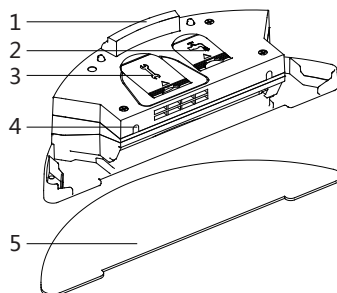
### 2.4 Dustbin

- 1.Primary filter
- 2.High efficiency filter
- 3.Dusbin upper cover
4. Dusbin botton cover



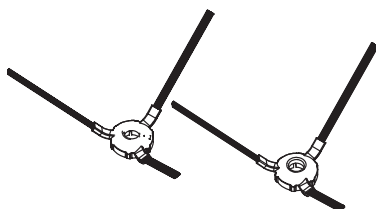
### 2.5 Water tank

1. Water tank button
2. Water inlet cap
- 3.Air valves
4. Water leakage hole
5. Mop



### 2.6 Side brush

Please install the side brush according to the color of the socket of the side brush. Left brush is green color, and right brush is red color.



### 2.7 Remote control

#### 1

The robot is in standby or cleaning mode, press this button to start auto recharging.

#### 2

1 Press this button to change standby mode from sleep mode (power switch is on).

2 In standby mode, press this button to start cleaning.

## 2 Product Components

3 In cleaning mode, press this button to stop cleaning.

4 In plan mode, press this button to confirm the schedule setting.

5 Press this button to start cleaning when the robot is recharging on charging station.

### 3 ►||

Press this button to start random cleaning mode. The process is zigzag cleaning mode, fixed cleaning mode, and cleaning mode in edgewise.

### 4 ▲ ▼ ◀ ▶

Press direction button to adjust the robot moving direction.

### 5 ⌚

Press this button for 3 seconds to start time setting, press again to confirm time setting.

### 6 🔁

In cleaning mode press this button to start strong suction power cleaning.

### 7 🕒

Long press this button to start schedule setting, press On/Off button to confirm setting. In the process of setting, press schedule button to unset. (Before reschedule cleaning, set current clock time to confirm that the remote control aims at the machine).

### 8 ↻

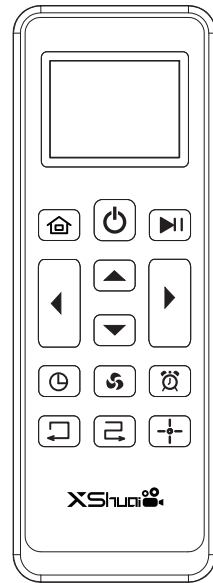
In standby or cleaning mode, press this button to start edgewise cleaning mode.

### 9 ➡

In standby or cleaning mode, press this button to start advanced zigzag cleaning mode.

### 10 +

In standby or cleaning mode, press this button to start spot cleaning mode. The robot start Zigzag cleaning mode automatically after spot cleaning finished.



### Attention:

1 Please install 2 AAA/R03(No.7) battery.

2 Please take out battery when you do not use for a long time.

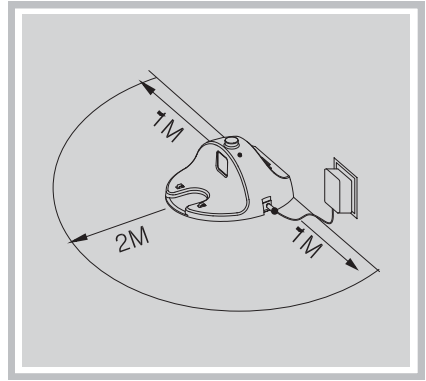
3 Remote control will be in standby mode in a few seconds after use, please press any key to wake up it.

## 3 Product operations

### 3.1 Quick start guide

#### 1.Place charge

Place charger, connect the adapter and power, and the power light on the charger will stay lit. Position the charger against the wall, and remove all obstacles about 1 or 2 meters ahead of the charger.



#### 2. Power Switch

Open the power switch at the bottom of the machine, host keypad led is lit, the machine enters standby mode..

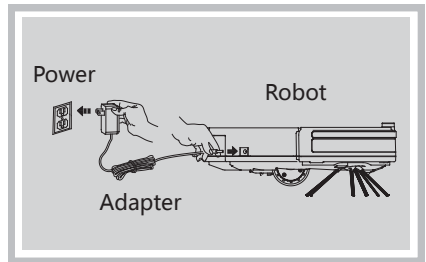
#### 3. Main machine sweep button

Turn on the power switch of the product, and press directly the sweep button on the panel, it will begin with a zigzag path cleaning.

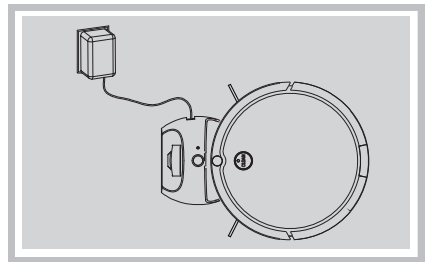
#### 4.Product charging

There are two methods of charging.

1 Plug the power adapter directly to the machine and the other end is plugged in the power.



2 When the charge is lower than 20%, the machine will automatically start looking for recharge stand, or press the recharge button on the remote control to return the automatic charger. Automatic recharge-sensing distance as in the charging a RADIUS 4m, please ensure that the charger is powered and obstacle location as little as possible, otherwise it could not find the charger.



#### Attention:

1 When charging, make sure the power switch is on.

2 using the charger stand will interrupt the charging and start the cleaning, so please do not make this operation when using the direct charge.

## 3 Product operations

3 Charging the machine 6 hours for the first time.

4 When charging, the cleaning button blinks, and when fully charged, the cleaning button stops blinking, and lit permanently.

5 Please switch the main machine off when long time no use.

### 3.2 Pause/Standby mode

1. This model operation process: sleep mode>Standby mode>Cleaning mode

1 Sleep mode: power switch is on, CLEAN button light is off, the robot does not work.

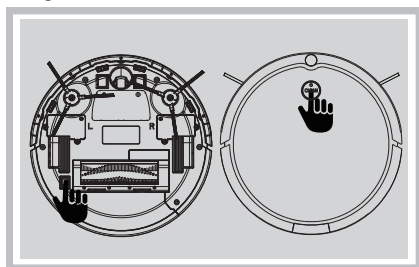
2 Standby mode: power switch is on, CLEAN button light is on, the robot does not work.

3 Cleaning mode: the robot is cleaning, CLEAN button light is off.

#### 2.Start

1 Please turn on the switch at the bottom of the machine.

2 Press sweep button on the machine or on the remote control to automatically start the machine to work.



#### Attention:

When the robot is in sleep mode, press CLEAN button on the main machine to wake it up, press again to start cleaning.

#### 3.Standby mode

Standby mode refers to the machine switching from working status to static status. Press the sweep button on the machine or switch button on the remote control to operate.

#### 4.Sleep mode

In standby mode without any operation the machine will enter into standby mode after 2 minutes, and the machine is in static status and the button indicator light is off.

### 3.3 Plan mode

Under the plan mode, the machine can work at a preset time.

#### 1.Set the remote controller clock time

1 Long press the clock button in the remote controller for 3 seconds, and set a specific time according to "up, down, left and right" direction button.

2 Press the clock button once again to save the setting.

#### 2.Set the pre-scheduled cleaning time

1 Point the remote controller at the machine (the machine is in standby status).



## 3 Product operations

2 Long press the "plan" button in the remote controller for 3 seconds into the plan mode, and set a specific time according to "up, down, left and right" direction button.

3 Press the on/off button to save the settings, and to cancel the plan, press the "plan" button again (During the operation, the machine is always on the standby status.)

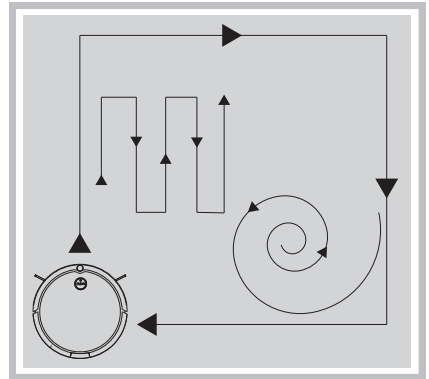
### Attention:

- 1 Set clock for your remote control before cleaning, the time settings are using real time.
- 2 Replace the remote control batteries, reset the appointment.
- 3 This machine uses real time for an appointment. If power is off, you will need to make an appointment.
- 4 Make an appointment for each half hour, clock settings are in minutes.

### 3.4 Clean mode

#### 1. Automatic clean

- 1 Press the clean button on the machine directly into the zigzag cleaning mode, if not switching, the operating mode remains unchanged.
- 2 Press automatic button on the remote controller for random cleaning, and the process is the zigzag cleaning mode, fixed cleaning mode and edgewise cleaning model.



### Attention:

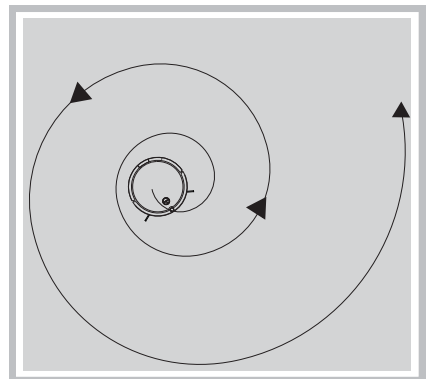
Machine in any cleaning mode, press the remote control "on/off" button or sweep button on the machine to stop working.

#### 2. Spot cleaning

- 1 Place machine in clean area, press the remote control's "SPOT " button on the machine to start with the placement point spiral sweep.

### Attention:

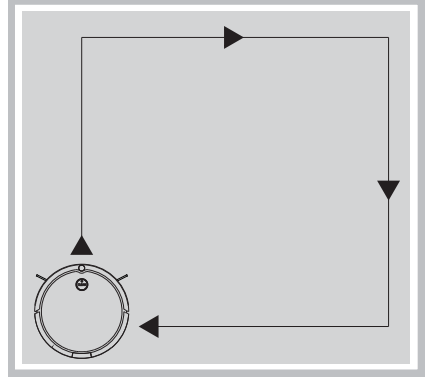
- 2 After the spot cleaning is completed, the machine will automatically enter zigzag cleaning mode.
- 3 Remote control on the machine's instructions is required to point at the machine in order to operate successfully.



## 3 Product operations

### 3.Edge cleaning

- 1 Press edge cleaning button on remote control to start edge cleaning mode, the robot will start edge cleaning.
- 2 In auto cleaning mode, the robot also may start edge cleaning.

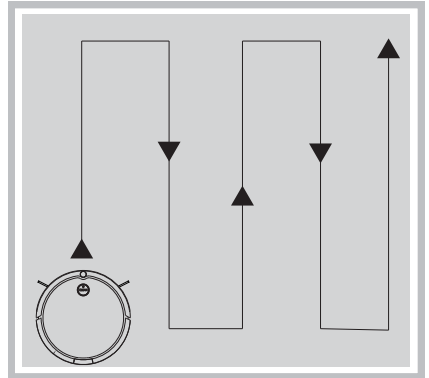


### 4.Advanced zigzag cleaning

- Press zigzag cleaning button on remote control to start advanced zigzag cleaning.

#### Attention:

- In any mode, press this button to start strong suction power cleaning.

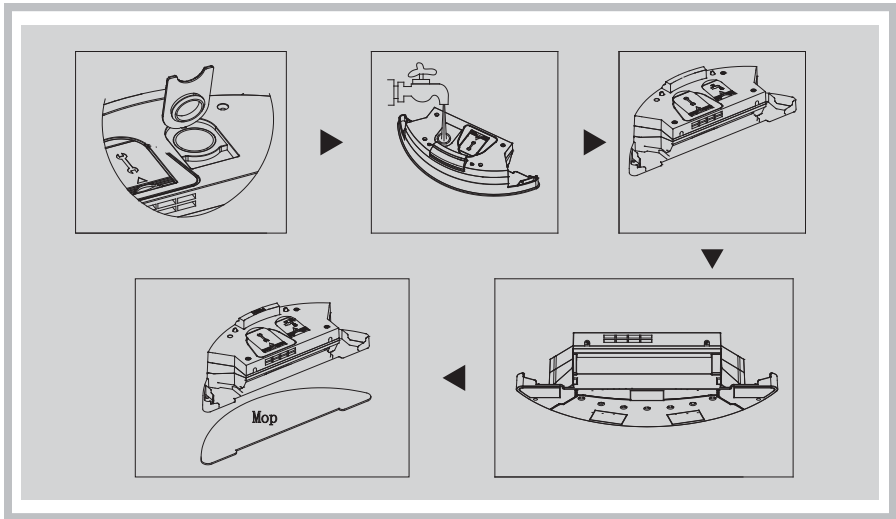


## 3.5 Water tank and mop operation

### 1.Filling water into water tank

- 1 Open water inlet cap.
- 2 Fill in water and cover the cap. Water tank capacity is 260ml(appr.).
- 3 Check whether the tank bottom outlet wool column drops (not drops is normal).
- 4 After the check, MOP stick firmly on the water bottom, put the blue Flannel into the machine facing the ground.
- 5 Put the tank into the machine, start the machine, and water enters into the mop through wool column, water stopped dripping out of the tank when the machine stops. Pour water out if the machine stops working for a long time.

### 3 Product operations

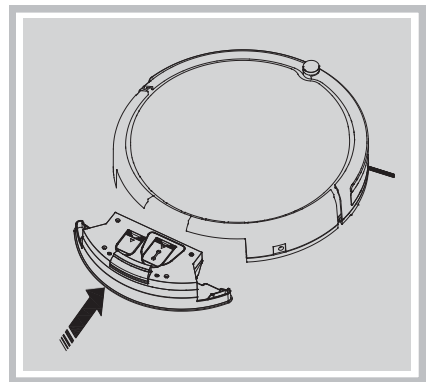


### 2 Installation of water tank

MOP chassis is mounted on the machine, and when installed, please aim at the tanks fixed jacks.

#### Attention

- 1 Please remove the water tank when injecting water, and do not inject with complete machine.
- 2 Please remove water drops when installation of water tank.
- 3 Mop shall not be too wet, and wring to prevent tire slippage.



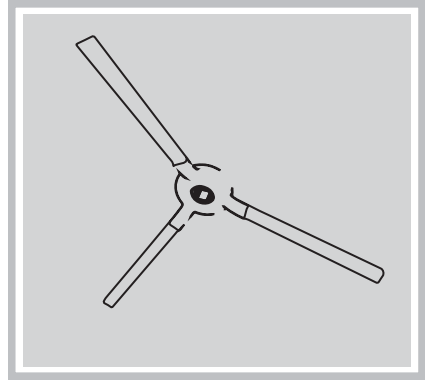
## 4 Product Maintenances

### 4.1 Cleaning of side brush

Side brush can be removed and clean by water.  
Please dry them completely before second use.  
If side brushes damaged, please replace them.

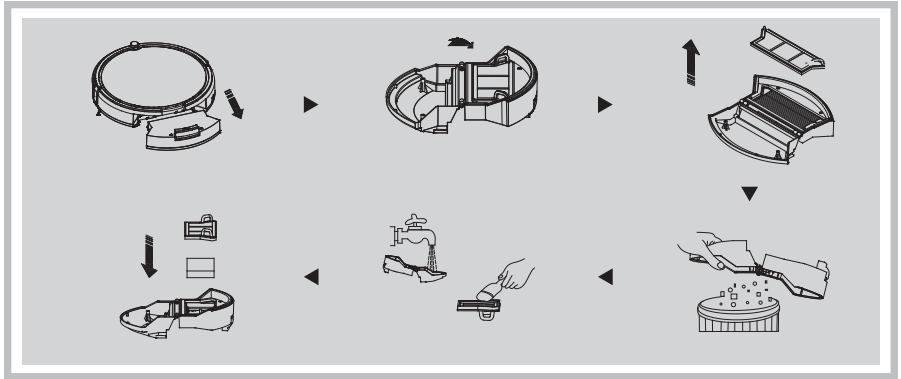
#### Attention:

When replace side brush, please pay attention to the L and R position and color.



### 4.2 Cleaning of dustbin and filter

- 1 Press PUSH button on dustbin, remove the dustbin.
- 2 Open dustbin bottom cover.
- 3 Hold primary filter and pull out, then pull out high efficiency filter.
- 4 Pour out trash into trash bin.
- 5 Clean dustbin, high efficiency filter and primary filter completely. High efficiency filter lifetime is 6 months.
- 6 Please install them correctly before second use.



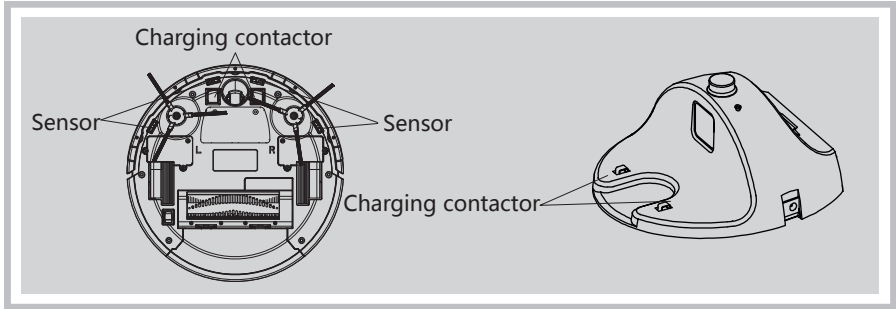
#### Attention

- 1 Please clean the dustbin after each use.
- 2 Parts washed by water, do not expose to sun. Please install them after drying completely.
- 3 Please do not use the robot when primary filter and high efficiency filter are damaged to avoid motor damage. Please replace new filters before use.
- 4 High efficiency filter cannot be washed by water.

## 4 Product Maintenances

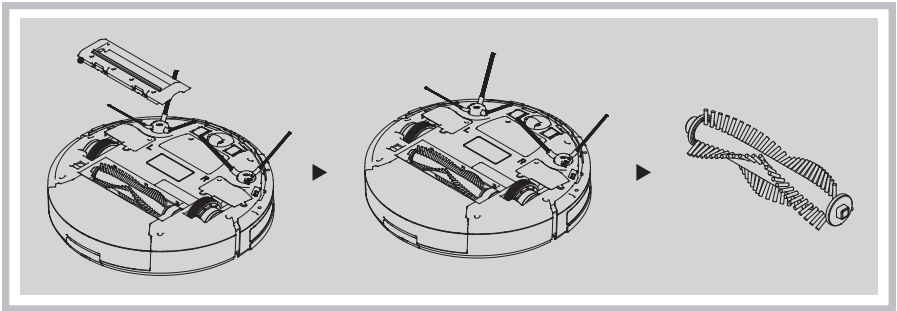
### 4.3 Cleaning of sensors and charging poles

- 1 Clean sensors and charging poles on robot bottom by using soft cloth.
- 2 Clean charging poles on charging station by using soft cloth.



### 4.4 Cleaning of main brush

- 1 Press the locker, open main brush cover.
- 2 Hold one end of main brush, take out. Install another end of main brush first when installation after cleaning.
- 3 Clean the hair and dirt by using a cleaning brush. Please make sure that do not lose the rubber.
- 4 Install the main brush and cover after cleaning.



### Attention

All maintenance must be done after dustbin removed.

## 4 Product Maintenances

### 4.5 Water tank maintenance

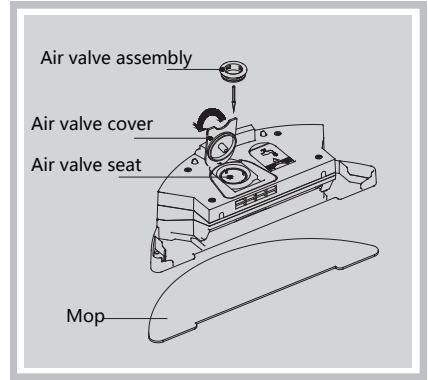
1 When the mop need to be cleaned, remove the mop first, clean dirt first then wash by water.

2 Air valve do not need to be maintained when normal use. Clean it when water leakage is abnormal (the power switch is off).

3 Take out air valve components, check and clean, then install correctly.

Attention: Air valve components include: air valve frame air valve(rubber).

Do not miss or damage when maintenance.



### 4.6 Battery replacement

1 Open the battery cover by using a screw driver.

2 Hold the insulation cloth and pull out the battery.

3 Detach the battery from the main machine.

4 Install new battery. Make sure the side with words up.

5 Connect the battery with main machine.

6 Lock the battery cover.

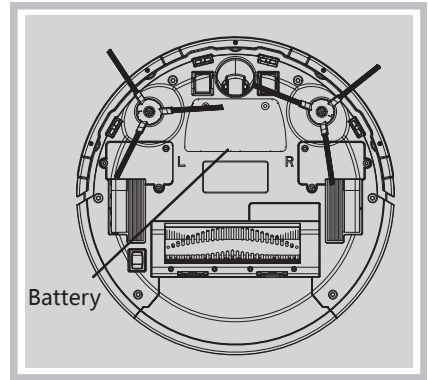
7 Turn on the robot to check.

Attention:

1 Do not use unapproved battery to avoid damage.

2 Please charge for 6 hour after new battery changed.

3 Keep the old battery for recycling.



## 5 Trouble shooting

---

No.	Problems	Solution
1	The robot keeps moving backwards	1 Avoid working in high light intensity environments. 2 Avoid working on deep dark carpets. 3 Clean the stair detection sensors by using a soft cloth. 4 Check the bumper and clean.
2	The robot do not work	1 Turn on the power switch button. 2 Check the battery capacity, and charge the robot. Check again after full charging.
3	The robot do not recharge automatically	1 Make sure the indication light on charging station is on. 2 Check if there are obstacles between robot and charging station. 3 When low battery, please charge the robot by using adapter.
4	The robot cannot be recharged	1 Please use approved adapter and make sure adapter plugged. 2 When the robot is damaged, please do not use. Contact after sales.
5	Remote control do not work	1 Check the remote control battery; Check the signal sensor on the robot clean it.

## 6 Product Parameters

Size	320*320*85mm
Net Weight	3.2kg
Working voltage	14.8V ---
Input voltage	19V ---
Input current	1.0A
Dustbin capacity	400mL
One time charging time	4-6h
One time cleaning time	90-120min

This equipment has been tested and found to comply with the limits for a Class B digital device, pursuant to part 15 of the FCC Rules. These limits are designed to provide reasonable protection against harmful interference in a residential installation. This equipment generates, uses and can radiate radio frequency energy and, if not installed and used in accordance with the instructions, may cause harmful interference to radio communications. However, there is no guarantee that interference will not occur in a particular installation. If this equipment does cause harmful interference to radio or television reception, which can be determined by turning the equipment off and on, the user is encouraged to try to correct the interference by one or more of the following measures:

- o Reorient or relocate the receiving antenna.
- o Increase the separation between the equipment and receiver.
- o Connect the equipment into an outlet on a circuit different from that to which the receiver is connected.
- o Consult the dealer or an experienced radio/TV technician for help.

**Caution:** Any changes or modifications to this device not explicitly approved by manufacturer could void your authority to operate this equipment.

This device complies with part 15 of the FCC Rules. Operation is subject to the following two conditions: (1) This device may not cause harmful interference, and (2) this device must accept any interference received, including interference that may cause undesired operation.

To comply with FCC RF exposure compliance requirements, this grant is applicable to only mobile configurations. The antennas used for this transmitter must be installed to provide a separation distance of at least 20 cm from all persons and must not be co-located or operating in conjunction with any other antenna or transmitter.