

WM-N-BM-11/ BM-14

Antenna Application Note

Project Name : WM-N-BM-11-APP01

Subject : Design Guideline for Module Antenna

Date : 2013-06-07

Contents

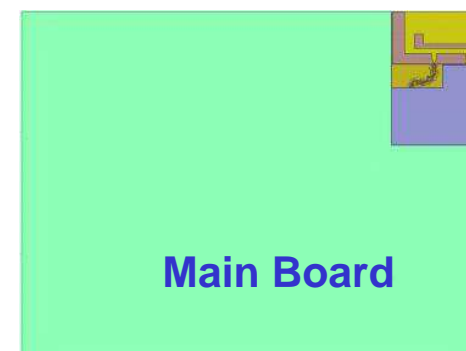
- 1. Module Location Recommendation**
- 2. Module Layout Guideline**
- 3. Antenna Simulation Result**
- 4. Antenna Measurement Setup**
- 5. Antenna Measurement Results**

1. Module Location Recommendation

To get better antenna performance, the following two module locations are advised.

- Location 1:

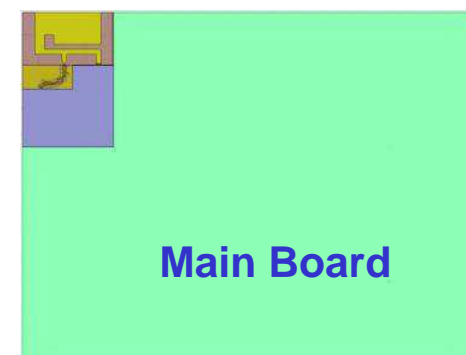
Module is recommended to be on the upper right corner of main board.



Location 1

- Location 2:

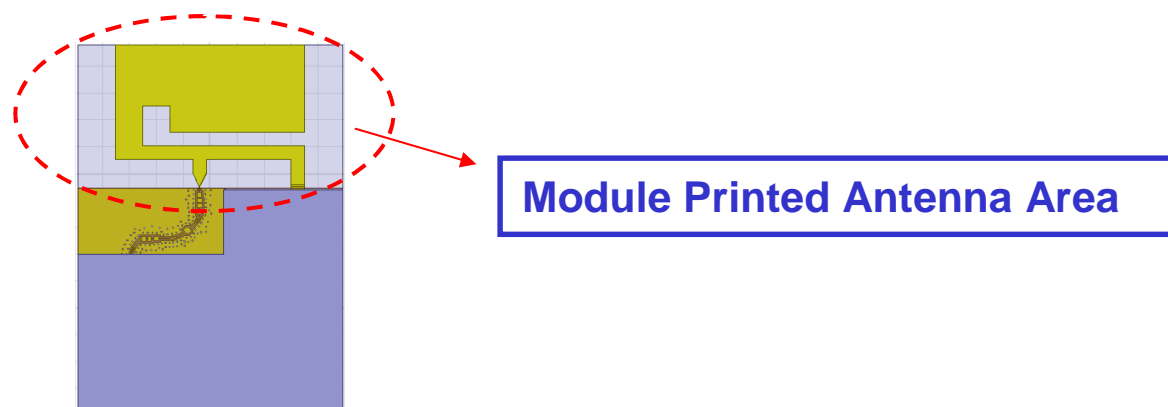
Module is recommended to be on the upper left corner of main board.



Location 2

2. Module Layout Guideline

- Main board antenna area under module printed antenna should be clear or empty.
- No signals, GND or power traces can be routed in antenna area for each layers of main board.
- Any metal lid, power trace or metal components should be placed far away from antenna area on main board.
- Keep GND plane as large as you can on main board.



3. Antenna Simulation Results



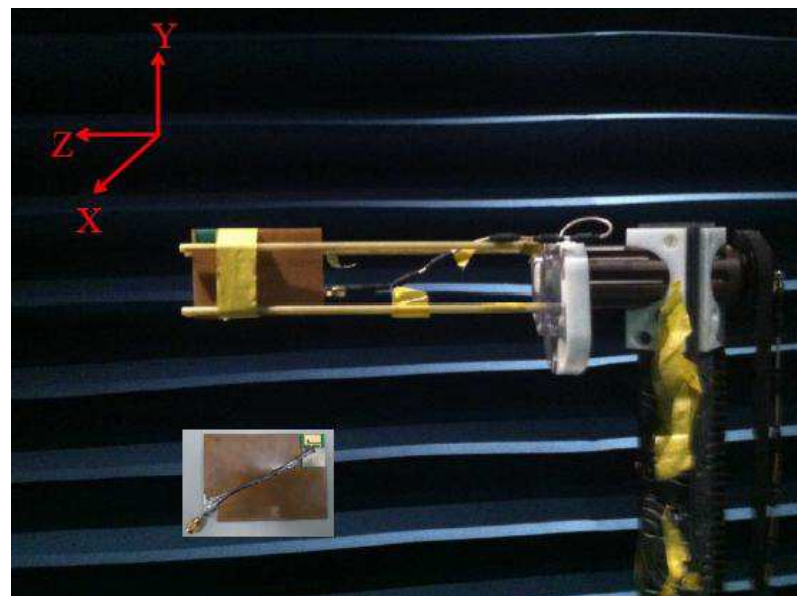
	Ant. on right-up corner	Ant. on left-up corner
Configuration		
S11		
Gain		
3D Pattern		

4. Antenna Measurement Setup

- Module is on the upper right corner of main board for performance measurement.

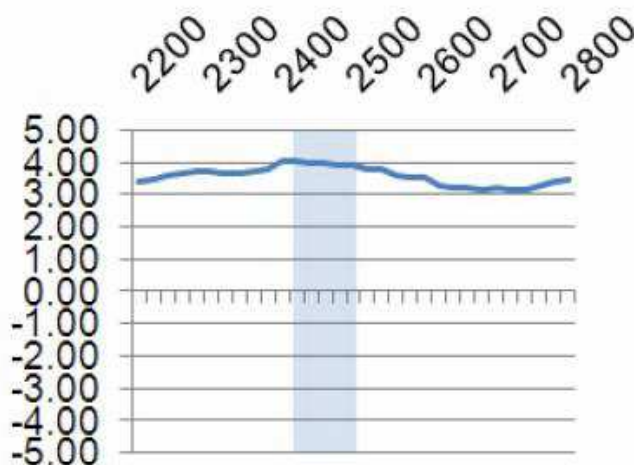
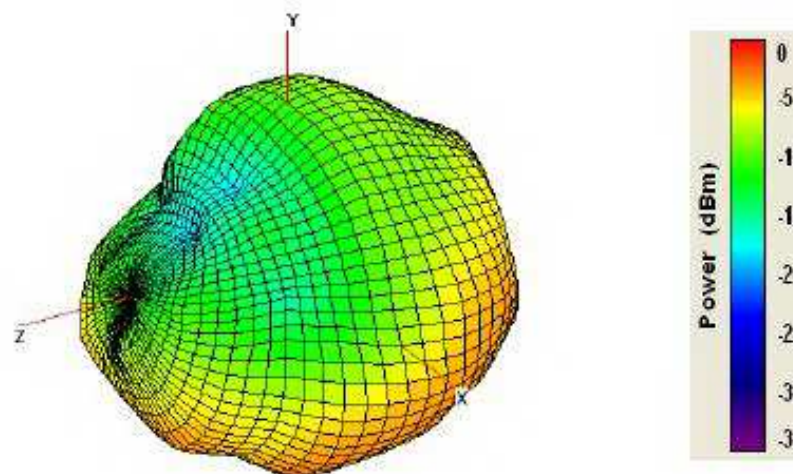


- Antenna measurement setup as the figure.

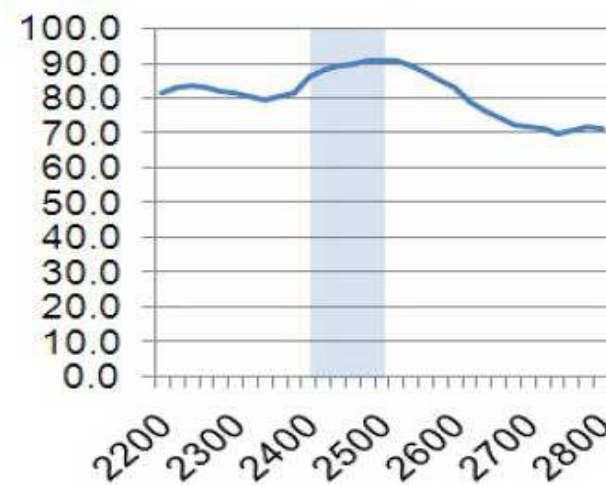


5. Antenna Measurement Result

Antenna Pattern



Antenna Gain (dBi)



Antenna Efficiency (%)



Realizing IDEAS Together

Innovation

Delivery

Effectiveness

Speed

Accountability