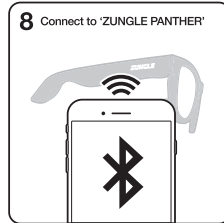
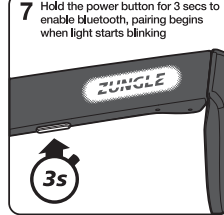
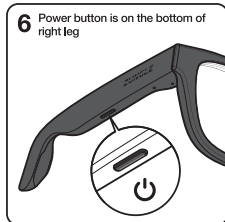
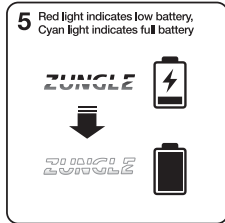
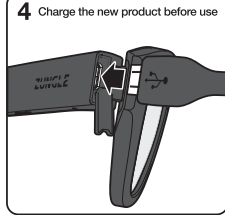
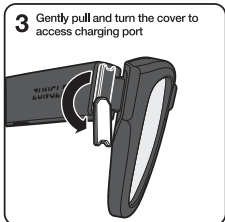
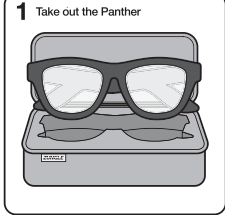




User Manual



LENS REPLACING INSTRUCTIONS

*NOTE: PLEASE VISIT OUR YOUTUBE ZUNGLE CHANNEL FOR DETAILED INSTRUCTIONS.

*NOTE: THE CORNER OF THE LENS WITH ACUTE/SHARP ANGLE IS TOWARD THE CENTER OF THE GLASSES.

WARNING: To replace lenses, the size of the lenses must be identical to the default lenses of the Product(s). Failure to comply may damage the Product(s).



TO REMOVE LENSES

- (1) Gently hold the frame with your fingers on outside, and your thumbs on inside of the lens.
- (2) Gently press the lens outward while holding the frame with your fingers.

TO INSERT LENSES

- (3) Determine the right lens and the left lens. Failure to do so may damage the Product(s). (See diagram above)
- (4) Insert the lens from the front of the frame.
- (5) Place the bottom edge of the lens into the lower groove of the frame, and gently press on the center of the lens.
- (6) Continue pressing around the edge of the lens until the lens is completely inserted.

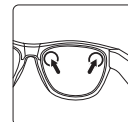


Fig 1), 2)

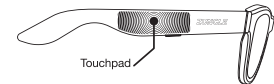


Fig 3), 4), 5), 6)

TOUCHPAD INSTRUCTIONS

*NOTE: PLEASE VISIT OUR YOUTUBE ZUNGLE CHANNEL FOR DETAILED INSTRUCTIONS.

*NOTE: THE TOUCHPAD IS LOCATED IN THE MIDSECTION OF THE RIGHT TEMPLE. USERS MAY PRACTICE THE TOUCHPAD WHILST IN USAGE FOR OPTIMAL PERFORMANCE. (Every user may take different amounts of time to be fully accustomed to the touchpad)



GESTURES

- 1) Tap once to play or pause the music. (or to answer phone calls)
- 2) Swipe forward to skip to the next song. (or to reject calls)
- 3) Swipe backward to skip to the previous song. (or to reject calls)
- 4) Double-tap to operate voice commands. (Siri, S Voice and etc.)



Fig 1)



Fig 2)



Fig 3)



Fig 4)

WARNING

SAFETY GUIDELINES

Please read the Safety Guidelines below prior to using the Product(s). Failure to follow (or violating) these instructions may be dangerous, and shall void ZUNGLE Warranty.

WARNING!

(1) PRODUCT(S) STORAGE AND MAINTENANCE Please read the Product(s) storage and maintenance guidelines carefully. The Product(s) may present a risk of fire, chemical burn, or explosion if mistreated.

DAMAGE

- DO NOT impact the Product(s). This may cause damage to the Product(s) that could result in malfunctioning. Such examples include, but are not limited to:
 - DO NOT scratch or stab the Product(s) with sharp objects.
 - DO NOT drop the Product(s).
 - DO NOT apply unusual stress to the speaker(s).

REPLACEMENT/MODIFICATION

- DO NOT attempt to replace or modify the Product(s). This may cause short circuits that could result in a fire, or electric shock. Such examples include, but are not limited to:
 - DO NOT attempt to replace the built-in-battery.
 - DO NOT attempt to repair/disassemble the Product(s).

MOISTURE/TEMPERATURE

- DO NOT expose the Product(s) under extreme conditions. Such examples include, but are not limited to:
 - Keep the Product(s) between 0°C ~ 45°C (32°F ~ 113°F). The Product(s) may not work temporarily in hot or cold environment even when the battery is fully charged.
 - Keep the Product(s) away from extreme heat such as, microwave, stove, etc.
 - DO NOT keep the Product(s) under direct sunlight.
 - DO NOT keep the Product(s) in motor vehicles or enclosed areas under extreme temperatures.
- DO NOT keep/use/submerge the Product(s) in water. Such examples include, but are not limited to:
 - Keep the Product(s) away from rain, moisture, or other liquid. The Product(s) are sweat resistant, but are not waterproof.
 - DO NOT keep or use the Product(s) in humid areas.
 - DO NOT keep or use the Products(s) while swimming or taking a shower.

BATTERY/CHARGING

- Recommend using a micro 5pin USB cable provided with the Product(s) and a 5V-1A charger.
- The Product(s) must be charged under supervision.
- If the Product(s) are left unused for a long period, please recharge fully before using the Product(s) again.
- DO NOT charge the Product(s) IMMEDIATELY after physical activities. Sweat inside the charging port may cause circuits burning while charging. Keep the charging port dry before connecting to the charger.
- DO NOT touch the Product(s) with wet hands while charging.

GENERAL

- Clean the Product(s) only with a soft dry cloth.
- Dispose the Product(s) according to local standards and regulations.
- Keep the Product(s) out of reach from children/pets. The Product(s) contain the parts that may be hazardous to children/pets.

(2) PRODUCT(S) USAGE

Please read the Product(s) usage guidelines carefully. Inappropriate usage of the Product(s) may cause personal injury or damage to the Product(s).

ATTENTION

- Usage of the Product(s) will impair your ability to fully hear, or see. Be cautious while engaging in any activity that requires your full attention. Such examples include, but are not limited to:
 - DO NOT wear while driving if the Product(s) impair peripheral vision.
 - Usage of colored lenses at night may be inappropriate.

HEALTH

- DO NOT use sharpened/destroyed/damaged parts or the Product(s) as it may present a danger. Please contact ZUNGLE for support.
- Listening with the Product(s) at high volume may affect your hearing, which may result in permanent damage to your hearing without any noticeable discomfort.
- DO NOT use the Product(s) for direct viewing of the sun or for protection against artificial light sources as it may affect your vision.
- If you experience discomfort, headache, dizziness, or ringing in your ears, IMMEDIATELY discontinue using the Product(s).
- Under any medical conditions, please consult your doctor prior to usage. Such examples include, but are not limited to:
 - Patients with any electrical medical devices such as pacemaker and hearing aid.
 - Patients with cupulolithiasis.

GENERAL

- If the Product(s) overheats, IMMEDIATELY discontinue using the Product(s).
- DO NOT use The Product(s) for protective purpose. The Product(s) are not designed to protect wearer from all injury in the event of impact with hard objects. Such examples include, but are not limited to:
 - DO NOT use the Product(s) to protect eyes.
 - DO NOT use the Product(s) for industrial protection equipment.
 - DO NOT use the Product(s) improperly other than its original purpose. Such examples include, but are not limited to:
 - DO NOT poke eyes, ears, or nose with the Product(s).
 - DO NOT put the Product(s) in mouth.
 - The Product(s) are not intended for any use as industrial equipment.
- Observe all signs and instructions that require an electrical device or RF radio product to be switched off in designated areas such as hospitals, explosive atmospheres, or airplanes.
- DO NOT let children/pets to use the Product(s). The Product(s) contain the parts that may be hazardous to children/pets.

VISIT OUR YOUTUBE CHANNEL



Search 'ZUNGLE' on Youtube for instructional videos.

CERTIFICATION

Currently, we only communicate electronically. Please visit www.zungleinc.com/support For Return, Refund, Exchange and any help Requests.

FCC notice to users and product statements

THIS DEVICE COMPLIES WITH PART15 OF THE FCC RULES. Operation is subject to the following two conditions; (1) this device may not cause harmful interference, and (2) this device must accept any interference received, including interference that may cause undesired operation. **CAUTION:** Changes or modification not expressly approved by the party responsible for compliance could void the user's authority to operate the equipment.

שולחן ערוך
אורח חיים