

Only using the AS-100RX information
for the certification

User Manual

6.TROUBLE SHOOTING AND MAINTENANCE

TROUBLE	TROUBLE CAUSE	REMEDY
Unit does not power up	No voltage of battery	Replace new batteries
	Battery direction reversed	Change the direction of the battery
Transmitter alarm LED does not light	No or low input power	Apply proper input voltage
	No signal	Correct wiring polarity
Receiver alarm LED does not light	No wireless signal	Signal line connection reverse
	The wire to the "V-" power input was disconnected, the "V+" is still connected.	Disconnect wire from the " + " power input.

7.NOTES

- The product shall be installed indoor and do not use it under the following conditions.
 - In the place where it is likely to be exposed to dust, high humidity, high temperatures, or rain.
 - In the place where it is closed to magnetic field.
 - In the place where vibration or shock is directly transmitted to the product.
- In order to ensure the normal operation of the product
 - Please power off before cleaning the product.
 - Do not use chemical detergents to clean the product.
- Never disassemble, repair and modify the product.
- The product comply with the FCC Standard and requirements of RoHS.
- Specifications and design are subject to change without prior notice.

8. Caution



AIN TECHNOLOGY(SHENZHEN)CO.,LTD

C6 Building 301A Heng Feng Industrial City, He Zhou, Xi Xiang Street, Bao An Qu, Shenzhen, China.

Tel. : +86-755 - 3321 0588

Fax.: +86-755-3321 0600

E-mail: sales@ain-cn.com

Http : // www . ain-cn.com

AINEXT LLC

4700 Aircenter Circle, Reno Nevada, 89502 USA

Tel. : +1-775-827-8000

Fax.: +1-775-827-8044

E-mail: info@aleph-usa.com

Http : // www.aleph-usa.com



Wireless Transmission Module

AS-100

Thank you for selecting ALEPH product.

Please read the manual carefully before operating the product.

AS-100TX



AS-100RX



The AS-100 is a digital receiver with an isolated relay output for use with transmitters. The receiver can be used in a variety of remote control applications. When the receiver detects signal from a transmitter, the relay output activates.

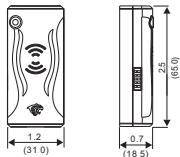
- Get rid of wire, keep your house clean and safe
- Easy installation, with adhesive pad or screws
- Compact and consumes very little power
- Micro-based signal activates
- Transmitter and Receiver Relay kit
- Compatible with various wired detectors

1. SPECIFICATIONS

Power Supply	Transmitter	1.5V AAA LR03 x2
	Receiver	12 - 24V DC
Temperature		-20 °C ~ +60 °C
Working Frequency		433.92 MHz
Wireless Distance		≥ 100m (Open field)
Transmitter Input		Dual N. O. (Contact without power)
Receiver Relay Output		N. C. /N. O. DC 24V, 2A Max.
Battery Life		3 Years (Normal Mode)
Using Environments		Indoor
Dimension		2.5"Hx1.2"Wx0.7"D(65.0x31.0x18.5 mm)
Product Certificates		FCC CE ROHS

2.DIMENSIONS

UNIT: inch(mm)



3.SYSTEM PARING

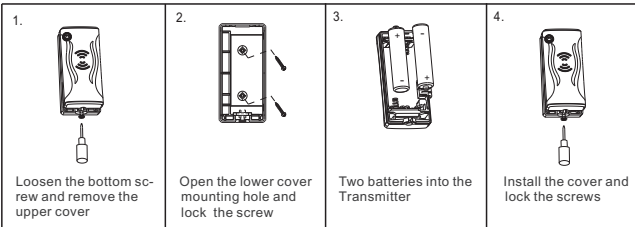
To paring the receiver to the transmitter, required to trigger the detector(connected with transmitter) in 5 seconds when receiver power on, the Receiver's LED will flash 6 times when paring successes.

NOTE:

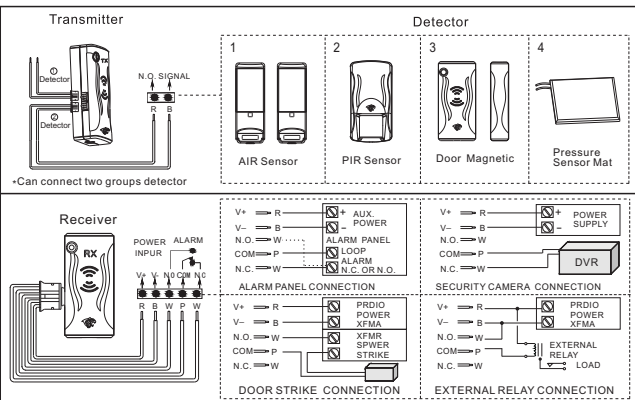
Every Receiver can only paring one Transmitter, the previous Transmitter will invalid automatically when Receiver is success to paring with new one

*Specifications and design are subject to change without prior notice.

4. INSTALLATION



5. CONNECTION MODE



FCC Caution:

Any Changes or modifications not expressly approved by the party responsible for compliance could void the user's authority to operate the equipment.

This device complies with part 15 of the FCC Rules. Operation is subject to the following two conditions: (1) This device may not cause harmful interference, and (2) this device must accept any interference received, including interference that may cause undesired operation.

IMPORTANT NOTE:

Note: This equipment has been tested and found to comply with the limits for a Class B digital device, pursuant to part 15 of the FCC Rules. These limits are designed to provide reasonable protection against harmful interference in a residential installation. This equipment generates, uses and can radiate radio frequency energy and, if not installed and used in accordance with the instructions, may cause harmful interference to radio communications. However, there is no guarantee that interference will not occur in a particular installation. If this equipment does cause harmful interference to radio or television reception, which can be determined by turning the equipment off and on, the user is encouraged to try to correct the interference by one or more of the following measures:

- Reorient or relocate the receiving antenna.
- Increase the separation between the equipment and receiver.
- Connect the equipment into an outlet on a circuit different from that to which the receiver is connected.
- Consult the dealer or an experienced radio/TV technician for help.