

TEST REPORT

FCC ID: 2ALNA-ICF53

Product: FM transmitter

Model No.: IC-F53

Additional Model No.: IC-F58, IC-F62, IC-F63, IC-F64

Trade Mark: iClever

Report No.: TCT170717E038

Issued Date: Aug. 03, 2017

Issued for:

**Shenzhen Thousandshores Technology Co., Ltd.
5th Floor, Chuangxin Building, Seven-star Creative Square, No.2 North Alley,
Chuangye 2nd Road, 28th Bao'an District, Shenzhen, China**

Issued By:

**Shenzhen Tongce Testing Lab.
1B/F., Building 1, Yibaolai Industrial Park, Qiaotou, Fuyong, Baoan District,
Shenzhen, Guangdong, China
TEL: +86-755-27673339
FAX: +86-755-27673332**

Note: This report shall not be reproduced except in full, without the written approval of Shenzhen Tongce Testing Lab.

This document may be altered or revised by Shenzhen Tongce Testing Lab. personnel only, and shall be noted in the revision section of the document. The test results in the report only apply to the tested sample.

TABLE OF CONTENTS

1. Test Certification	3
2. Test Result Summary	4
3. EUT Description.....	5
4. Genera Information.....	6
4.1. Test Environment and Mode.....	6
4.2. Description of Support Units.....	6
5. Facilities and Accreditations	7
5.1. Facilities	7
5.2. Location	7
5.3. Measurement Uncertainty.....	7
6. Test Results and Measurement Data	8
6.1. Antenna Requirement	8
6.2. Conducted Emission.....	9
6.3. Radiated Emission Measurement	10
6.4. Occupied Bandwidth.....	16

Appendix A: Photographs of Test Setup

Appendix B: Photographs of EUT

1. Test Certification

Product:	FM transmitter
Model No.:	IC-F53
Additional Model No.:	IC-F58, IC-F62, IC-F63, IC-F64
Trade Mark:	iClever
Applicant:	Shenzhen Thousandshores Technology Co., Ltd.
Address:	5th Floor, Chuangxin Building, Seven-star Creative Square, No.2 North Alley, Chuangye 2nd Road, 28th Bao'an District, Shenzhen, China
Manufacturer:	Shenzhen James Audio Technology CO.,Ltd
Address:	4th Floor, A- building, No.2 Guiyuan Road, Guihua Community, Guanlan Town, Longhua New District, Shenzhen, China
Date of Test:	Jul. 03 –Jul. 10, 2017
Applicable Standards:	FCC CFR Title 47 Part 15 Subpart C Section 15.239

The above equipment has been tested by Shenzhen Tongce Testing Lab. and found compliance with the requirements set forth in the technical standards mentioned above. The results of testing in this report apply only to the product/system, which was tested. Other similar equipment will not necessarily produce the same results due to production tolerance and measurement uncertainties.

Tested By:



Jin Wang

Date:

Jul. 10, 2017

Reviewed By:



Joe Zhou

Date:

Aug. 03, 2017

Approved By:



Tomsin

Date:

Aug. 03, 2017

2. Test Result Summary

Requirement	CFR 47 Section IC Paragraph	Result
Antenna requirement	§15.203	PASS
AC Power Line Conducted Emission	§15.207	N/A
Field strength of the fundamental signal	§15.239 (b)	PASS
Spurious emissions	§15.239 (b) (c)/ §15.209	PASS
Occupied Bandwidth	§15.215 (c)	PASS

Note:

1. PASS: Test item meets the requirement.
2. Fail: Test item does not meet the requirement.
3. N/A: Test case does not apply to the test object.
4. The test result judgment is decided by the limit of test standard.

3. EUT Description

Product Name:	FM transmitter
Model :	IC-F53
Additional Model:	IC-F58, IC-F62, IC-F63, IC-F64
Trade Mark:	iClever
Operation Frequency:	88.1MHz – 107.9MHz
Channel Separation:	100 kHz
Number of Channel:	199CH
Modulation Technology:	FM
Antenna Type:	Internal Antenna
Antenna Gain:	-0.5 dBi
Remark:	All models above are identical in interior structure, electrical circuits and components, and just model names are different for the marketing requirement.

Operation Frequency Each of Channel

Channel	Frequency	Channel	Frequency	Channel	Frequency
1	88.1 MHz	99	97.9 MHz	197	107.7 MHz
2	88.2 MHz	100	98.0 MHz	198	107.8 MHz
3	88.3 MHz	101	98.1 MHz	199	107.9 MHz
--	--	--	--		

Note:

In section 15.31(m), regards to the operating frequency range over 10 MHz, the Lowest frequency, the middle frequency, and the highest frequency of channel were selected to perform the test, and the selected channel see below:

Channel	Frequency
The lowest channel	88.1 MHz
The middle channel	98.0 MHz
The Highest channel	107.9 MHz

4. Genera Information

4.1. Test Environment and Mode

Operating Environment:	
Temperature:	24.0 °C
Humidity:	54 % RH
Atmospheric Pressure:	1010 mbar
Test Mode:	
Operation mode:	Keep the EUT in continuous transmitting with modulation
<p>The sample was placed (0.8m below 1GHz, 1.5m above 1GHz) above the ground plane of 3m chamber. Measurements in both horizontal and vertical polarities were performed. During the test, each emission was maximized by: having the EUT continuously working, investigated all operating modes, rotated about all 3 axis (X, Y & Z) and considered typical configuration to obtain worst position, manipulating interconnecting cables, rotating the turntable, varying antenna height from 1m to 4m in both horizontal and vertical polarizations. The emissions worst-case are shown in Test Results of the following pages.</p>	

4.2. Description of Support Units

The EUT has been tested as an independent unit together with other necessary accessories or support units. The following support units or accessories were used to form a representative test configuration during the tests.

Equipment	Model No.	Serial No.	FCC ID/DOC	Trade Name
/	/	/	/	/

Note:

1. All the equipment/cables were placed in the worst-case configuration to maximize the emission during the test.
2. Grounding was established in accordance with the manufacturer's requirements and conditions for the intended use.

5. Facilities and Accreditations

5.1. Facilities

The test facility is recognized, certified, or accredited by the following organizations:

- FCC - Registration No.: 645098

Shenzhen Tongce Testing Lab

The 3m Semi-anechoic chamber has been registered and fully described in a report with the (FCC) Federal Communications Commission. The acceptance letter from the FCC is maintained in our files.

- IC - Registration No.: 10668A-1

The 3m Semi-anechoic chamber of Shenzhen TCT Testing Technology Co., Ltd. has been registered by Certification and Engineering Bureau of Industry Canada for radio equipment testing

5.2. Location

Shenzhen Tongce Testing Lab

Address: 1B/F., Building 1, Yibaolai Industrial Park, Qiaotou, Fuyong, Baoan District, Shenzhen, Guangdong, China

Tel: 86-755-27673339

5.3. Measurement Uncertainty

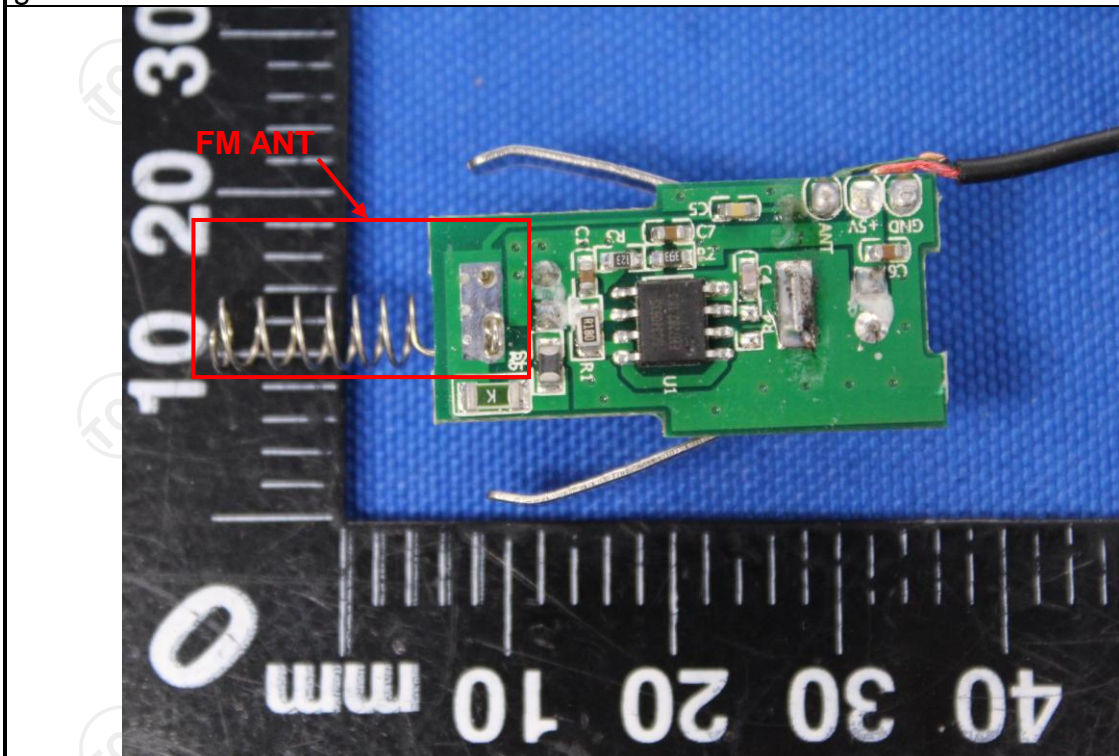
The reported uncertainty of measurement $y \pm U$, where expended uncertainty U is based on a standard uncertainty multiplied by a coverage factor of $k=2$, providing a level of confidence of approximately 95 %.

No.	Item	MU
1	Conducted Emission	$\pm 2.56\text{dB}$
2	RF power, conducted	$\pm 0.12\text{dB}$
3	Spurious emissions, conducted	$\pm 0.11\text{dB}$
4	All emissions, radiated(<1G)	$\pm 3.92\text{dB}$
5	All emissions, radiated(>1G)	$\pm 4.28\text{dB}$
6	Temperature	$\pm 0.1^{\circ}\text{C}$
7	Humidity	$\pm 1.0\%$

6. Test Results and Measurement Data

6.1. Antenna Requirement

Standard requirement:	FCC Part15 C Section 15.203 /247(c)
<p>15.203 requirement: An intentional radiator shall be designed to ensure that no antenna other than that furnished by the responsible party shall be used with the device. The use of a permanently attached antenna or of an antenna that uses a unique coupling to the intentional radiator, the manufacturer may design the unit so that a broken antenna can be replaced by the user, but the use of a standard antenna jack or electrical connector is prohibited.</p> <p>15.247(c) (1)(i) requirement: (i) Systems operating in the 2400-2483.5 MHz band that is used exclusively for fixed. Point-to-point operations may employ transmitting antennas with directional gain greater than 6dBi provided the maximum conducted output power of the intentional radiator is reduced by 1 dB for every 3 dB that the directional gain of the antenna exceeds 6dBi.</p>	
E.U.T Antenna:	
<p>The FM antenna is internal antenna which permanently attached, and the best case gain of the antenna is -0.5 dBi.</p>	



6.2. Conducted Emission

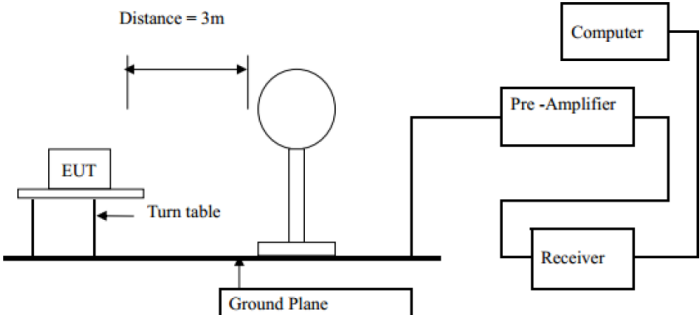
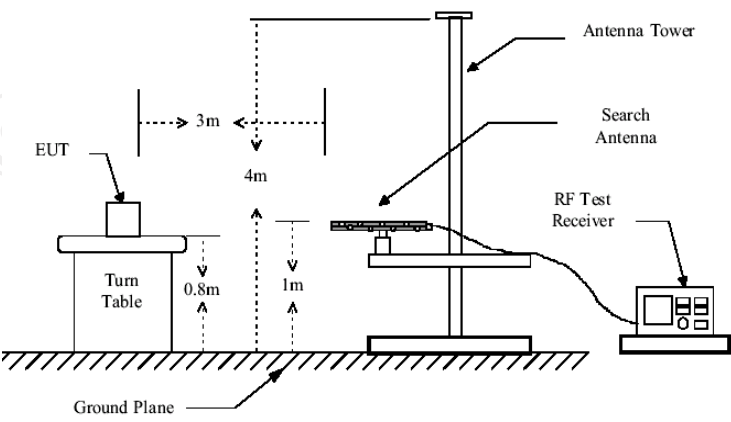
6.2.1. Test Specification

Test Requirement:	FCC Part15 C Section 15.207																
Test Method:	ANSI C63.10:2013																
Frequency Range:	150 kHz to 30 MHz																
Receiver setup:	RBW=9 kHz, VBW=30 kHz, Sweep time=auto																
Limits:	<table><tr><th rowspan="2">Frequency range (MHz)</th><th colspan="2">Limit (dBuV)</th></tr><tr><th>Quasi-peak</th><th>Average</th></tr><tr><td>0.15-0.5</td><td>66 to 56*</td><td>56 to 46*</td></tr><tr><td>0.5-5</td><td>56</td><td>46</td></tr><tr><td>5-30</td><td>60</td><td>50</td></tr></table>			Frequency range (MHz)	Limit (dBuV)		Quasi-peak	Average	0.15-0.5	66 to 56*	56 to 46*	0.5-5	56	46	5-30	60	50
Frequency range (MHz)	Limit (dBuV)																
	Quasi-peak	Average															
0.15-0.5	66 to 56*	56 to 46*															
0.5-5	56	46															
5-30	60	50															
Test Setup:	<div><div><div>Reference Plane</div><div><div>LISN</div><div>AUX Equipment</div><div>E.U.T</div></div><div>40cm</div><div>80cm</div><div>Test table/Insulation plane</div></div><div><div>LISN</div><div>Filter</div><div>AC power</div><div>EMI Receiver</div></div></div> <div><div>Remark</div><div>E.U.T: Equipment Under Test</div><div>LISN: Line Impedance Stabilization Network</div><div>Test table height=0.8m</div></div>																
Test Mode:	Refer to section 4.1 for details																
Test Procedure:	<div><div>1. The E.U.T is connected to the main power through a line impedance stabilization network (L.I.S.N.). This provides a 50ohm/50uH coupling impedance for the measuring equipment.</div><div>2. The peripheral devices are also connected to the main power through a LISN that provides a 50ohm/50uH coupling impedance with 50ohm termination. (Please refer to the block diagram of the test setup and photographs).</div><div>3. Both sides of A.C. line are checked for maximum conducted interference. In order to find the maximum emission, the relative positions of equipment and all of the interface cables must be changed according to ANSI C63.10:2013 on conducted measurement.</div></div>																
Test Result:	The EUT is powered by car's power DC 12V, So not applicable.																

6.3. Radiated Emission Measurement

6.3.1. Test Specification

Test Requirement:	FCC Part15 C Section 15.209				
Test Method:	ANSI C63.10: 2013				
Frequency Range:	9 kHz to 1 GHz				
Measurement Distance:	3 m				
Antenna Polarization:	Horizontal & Vertical				
Receiver Setup:	Frequency	Detector	RBW	VBW	Remark
	9kHz- 150kHz	Quasi-peak	200Hz	1kHz	Quasi-peak Value
	150kHz- 30MHz	Quasi-peak	9kHz	30kHz	Quasi-peak Value
	30MHz-1GHz	Quasi-peak	100KHz	300KHz	Quasi-peak Value
Limit(Field strength of the fundamental signal):	Frequency		Limit (dBuV/m @3m)		Remark
	88-108MHz		48		Average Value
			68		Peak Value
	Note: Fcc part15.239 (b) The field strength of any emissions within the permitted 200 kHz band shall not exceed 250 microvolts/meter at 3 meters. The emission limit in this paragraph is based on measurement instrumentation employing an average detector. The provisions in Section 15.35 for limiting peak emissions apply.				
Limit(Spurious Emissions):	Frequency		Limit (dBuV/m @3m)		Remark
	30MHz-88MHz		40.0		Quasi-peak Value
	88MHz-216MHz		43.5		Quasi-peak Value
	216MHz-960MHz		46.0		Quasi-peak Value
	960MHz-1GHz		54.0		Quasi-peak Value
Limit (band edge) :	Emissions radiated outside of the specified frequency bands, except for harmonics, shall be attenuated by at least 50 dB below the level of the fundamental or to the general radiated emission limits in Section 15.209, whichever is the lesser attenuation.				
Test Procedure:	<div>1. The EUT was placed on the top of a rotating table 0.8 meters above the ground at a 3 meter camber in below 1GHz, 1.5m above the ground in above 1GHz. The table was rotated 360 degrees to determine the position of the highest radiation.</div> <div>2. The EUT was set 3 meters away from the interference-receiving antenna, which was mounted on the top of a variable-height antenna tower.</div> <div>3. The antenna height is varied from one meter to four meters above the ground to determine the maximum value of the field strength. Both horizontal and</div>				

	<p>vertical polarizations of the antenna are set to make the measurement.</p> <ol style="list-style-type: none"> For each suspected emission, the EUT was arranged to its worst case and then the antenna was tuned to heights from 1 meter to 4 meters and the rotatable table was turned from 0 degrees to 360 degrees to find the maximum reading. The test-receiver system was set to Peak Detect Function and Specified Bandwidth with Maximum Hold Mode. If the emission level of the EUT in peak mode was 10dB lower than the limit specified, then testing could be stopped and the peak values of the EUT would be reported. Otherwise the emissions that did not have 10dB margin would be re-tested one by one using peak, quasi-peak or average method as specified and then reported in a data sheet.
<p>Test setup:</p>	<p>For radiated emissions below 30MHz</p>  <p>30MHz to 1GHz</p> 
<p>Test Mode:</p>	<p>Refer to section 4.1 for details</p>
<p>Test results:</p>	<p>PASS</p>

6.3.2. Test Instruments

Radiated Emission Test Site (966)				
Name of Equipment	Manufacturer	Model	Serial Number	Calibration Due
Test Receiver	ROHDE&SCHW ARZ	ESVD	100008	Oct. 13, 2017
Spectrum Analyzer	ROHDE&SCHW ARZ	FSQ	200061	Oct. 13, 2017
Pre-amplifier	EM Electronics Corporation CO.,LTD	EM30265	07032613	Oct. 13, 2017
Pre-amplifier	HP	8447D	2727A05017	Oct. 13, 2017
Loop antenna	ZHINAN	ZN30900A	12024	Oct. 13, 2017
Broadband Antenna	Schwarzbeck	VULB9163	340	Oct. 13, 2017
Horn Antenna	Schwarzbeck	BBHA 9120D	631	Oct. 13, 2017
Antenna Mast	Keleto	CC-A-4M	N/A	N/A
Coax cable (9KHz-1GHz)	TCT	RE-low-01	N/A	Oct. 13, 2017
Coax cable (9KHz-40GHz)	TCT	RE-high-02	N/A	Oct. 13, 2017
Coax cable (9KHz-1GHz)	TCT	RE-low-03	N/A	Oct. 13, 2017
Coax cable (9KHz-40GHz)	TCT	RE-high-04	N/A	Oct. 13, 2017
EMI Test Software	Shurple Technology	EZ-EMC	N/A	N/A

Note: The calibration interval of the above test instruments is 12 months and the calibrations are traceable to international system unit (SI).

6.3.3. Test Data

Field Strength of Fundamental

Frequency (MHz)	Emission PK/AV (dBuV/m)	Horizontal /Vertical	Limits PK/AV (dBuV/m)	Margin (dB)
88.1	40.51(AV)	H	48	-7.49
88.1	43.96(PK)	H	68	-24.04
88.1	44.65(AV)	V	48	-3.35
88.1	47.62(PK)	V	68	-20.38

Frequency (MHz)	Emission PK/AV (dBuV/m)	Horizontal /Vertical	Limits PK/AV (dBuV/m)	Margin (dB)
98.0	40.26(AV)	H	48	-7.74
98.0	42.87(PK)	H	68	-25.13
98.0	43.26(AV)	V	48	-4.74
98.0	45.17(PK)	V	68	-22.83

Frequency (MHz)	Emission PK/AV (dBuV/m)	Horizontal /Vertical	Limits PK/AV (dBuV/m)	Margin (dB)
107.9	41.58(AV)	H	48	-6.42
107.9	44.34(PK)	H	68	-23.66
107.9	45.27(AV)	V	48	-2.73
107.9	48.41(PK)	V	68	-19.59

Spurious Emissions

Frequency Range (9 kHz-30MHz)

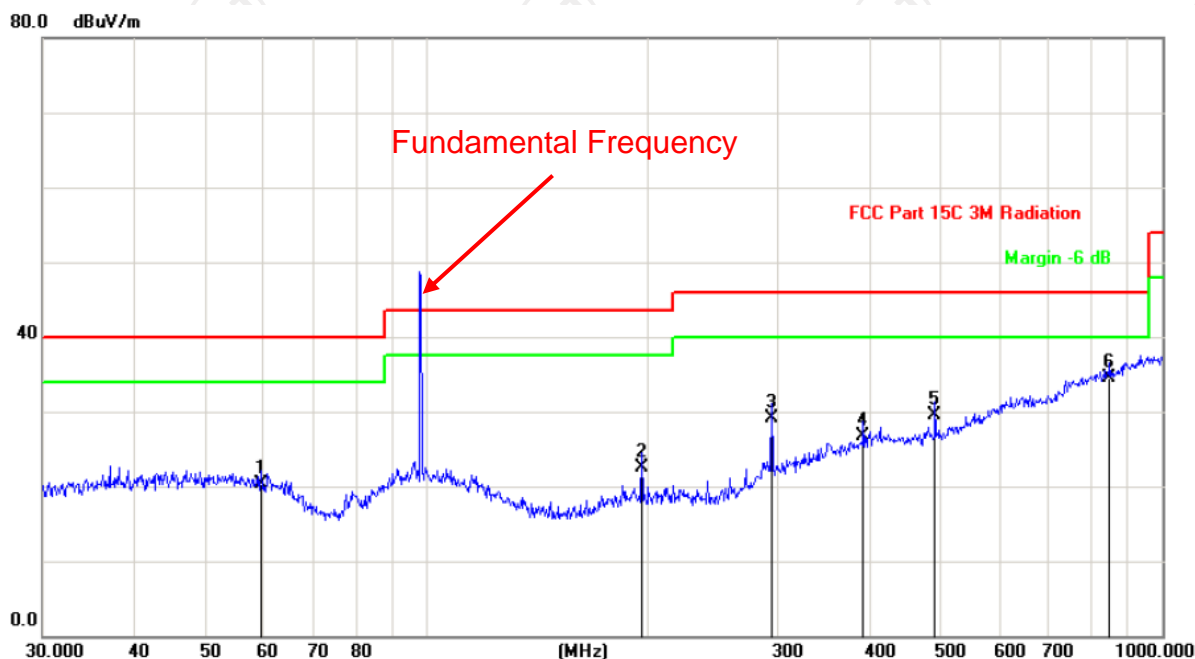
Frequency (MHz)	Level@3m (dBμV/m)	Limit@3m (dBμV/m)
--	--	--
--	--	--
--	--	--
--	--	--

Note: 1. Emission Level=Reading+ Cable loss-Antenna factor-Amp factor

2. The emission levels are 20 dB below the limit value, which are not reported. It is deemed to comply with the requirement

Frequency Range (30MHz-1GHz)

Horizontal:



Site

Polarization: **Horizontal**

Temperature: 25

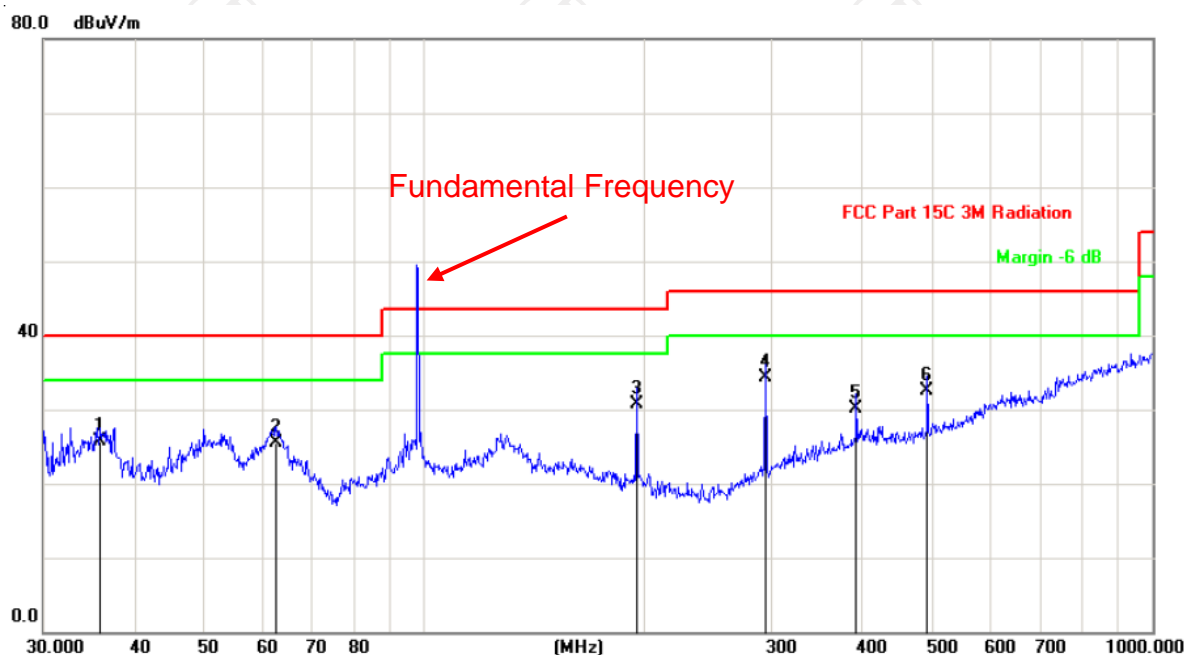
Limit: FCC Part 15C 3M Radiation

Power: DC 12V

Humidity: 55 %

No.	Mk.	Freq.	Reading Level	Correct Factor	Measurement	Limit	Over	Antenna Height	Table Degree	
		MHz	dBuV	dB	dBuV/m	dB/m	dB	Detector	cm	degree
1		59.4405	27.70	-7.40	20.30	40.00	-19.70	QP		
2		195.8220	31.86	-9.26	22.60	43.50	-20.90	QP		
3		294.1136	34.88	-5.68	29.20	46.00	-16.80	QP		
4		392.0951	28.47	-1.77	26.70	46.00	-19.30	QP		
5		490.7447	30.84	-1.24	29.60	46.00	-16.40	QP		
6	*	848.0562	27.66	6.84	34.50	46.00	-11.50	QP		

Vertical:



Site

Polarization: **Vertical**

Temperature: 25

Limit: FCC Part 15C 3M Radiation

Power: DC 12V

Humidity: 55 %

No.	Mk.	Freq. MHz	Reading Level dBuV	Correct Factor dB	Measure- ment dBuV/m	Limit dB/m	Over dB	Antenna Height cm	Table Degree degree	Comment
1		35.8746	33.14	-7.44	25.70	40.00	-14.30	QP		
2		62.6507	34.01	-8.41	25.60	40.00	-14.40	QP		
3		195.8220	40.06	-9.26	30.80	43.50	-12.70	QP		
4	*	294.1136	39.98	-5.68	34.30	46.00	-11.70	QP		
5		392.0951	31.87	-1.77	30.10	46.00	-15.90	QP		
6		490.7447	33.74	-1.24	32.50	46.00	-13.50	QP		

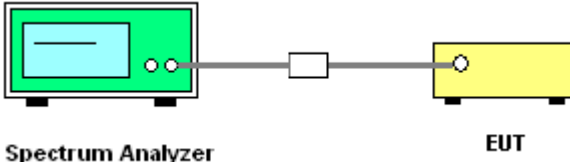
Note : 1) QP= Quasi-peak

2) Emission Level = Reading Level + Antenna Factor + Cable Loss.

3) Measurements were conducted in all three channels (high, middle, low) and the worst case Mode (Middle channel) was submitted only.

6.4. Occupied Bandwidth

6.4.1. Test Specification

Test Requirement:	FCC Part15 C Section 15.215(c)
Test Method:	ANSI C63.10: 2013
Limit:	200kHz
Test Procedure:	<ol style="list-style-type: none"> 1. According to the follow Test-setup, keep the relative position between the artificial antenna and the EUT. 2. Set to the maximum power setting and enable the EUT transmit continuously. 3. Use the following spectrum analyzer settings for 20dB Bandwidth measurement. Span = approximately 2 to 3 times the 20 dB bandwidth, centered on a hopping channel; $RBW \geq 1\%$ of the 20 dB bandwidth; $VBW \geq RBW$; Sweep = auto; Detector function = peak; Trace = max hold. 4. Measure and record the results in the test report.
Test setup:	 <p>The diagram illustrates the test setup. On the left is a green Spectrum Analyzer. A cable connects it to a small white rectangular component, which is then connected to a yellow rectangular component labeled 'EUT' (Equipment Under Test).</p>
Test Mode:	Refer to section 4.1 for details
Test results:	PASS

6.4.2. Test Instruments

RF Test Room				
Equipment	Manufacturer	Model	Serial Number	Calibration Due
Spectrum Analyzer	R&S	FSU	200054	Oct. 13, 2017

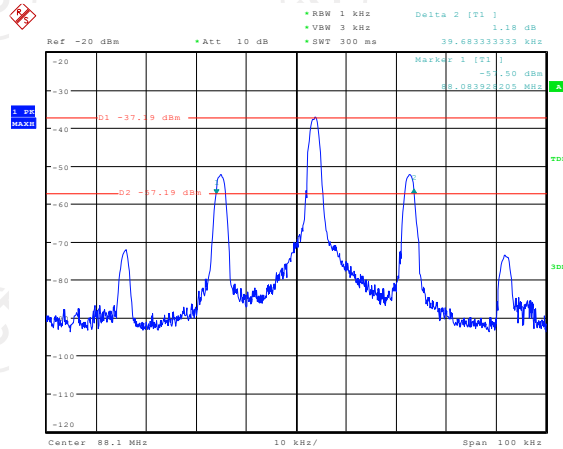
Note: The calibration interval of the above test instruments is 12 months and the calibrations are traceable to international system unit (SI).

6.4.3. Test data

Test Channel	20dB Occupy Bandwidth (kHz)	Limit (kHz)	Conclusion
Lowest	39.68	200	PASS
Middle	39.58	200	PASS
Highest	39.58	200	PASS

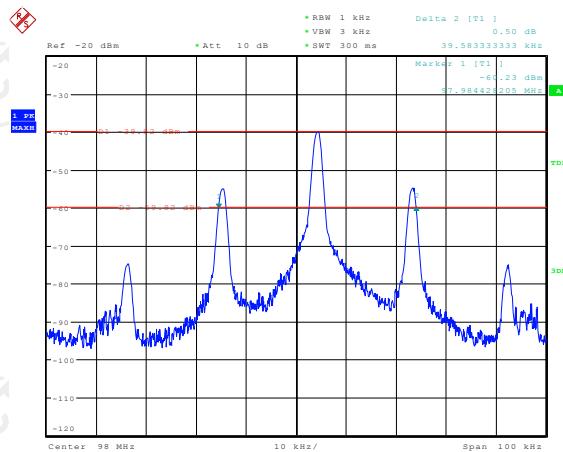
Test plots as follows:

Lowest channel



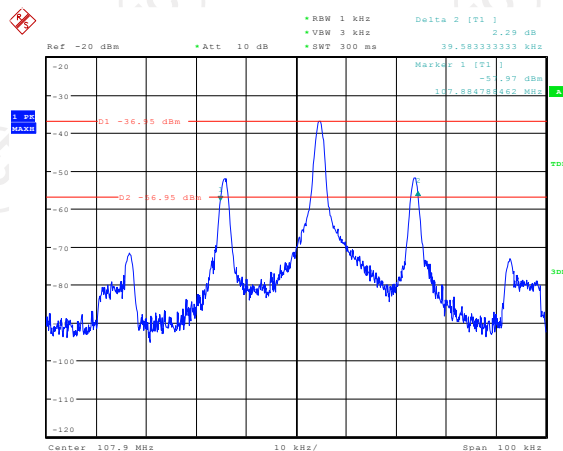
Date: 10.JUL.2017 13:52:03

Middle channel



Date: 10.JUL.2017 13:56:03

Highest channel



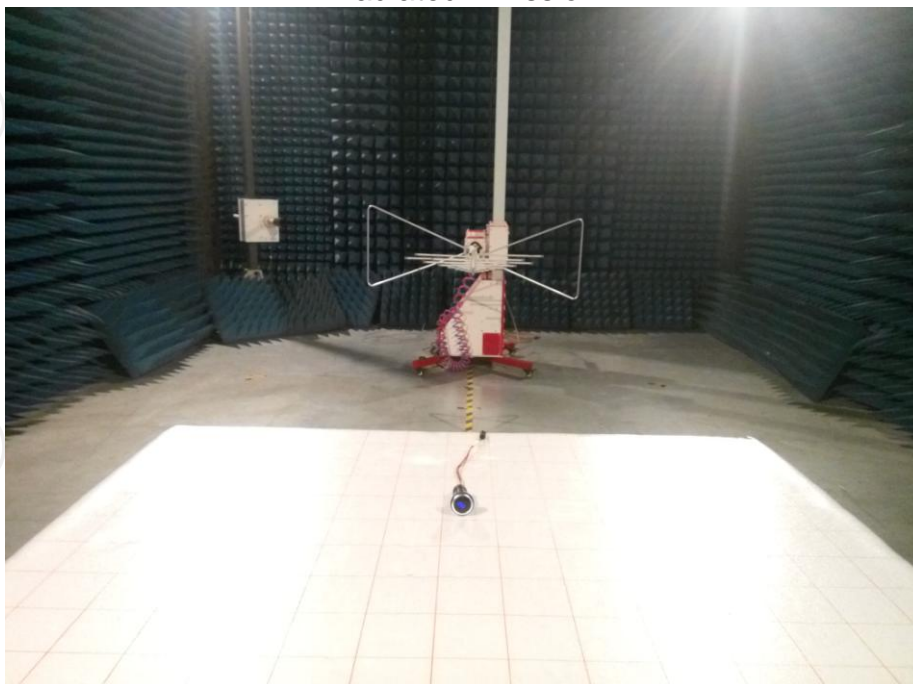
Date: 10.JUL.2017 13:53:50

Appendix A: Photographs of Test Setup

Product: FM transmitter

Model: IC-F53

Radiated Emission



Appendix A: Photographs of Test Setup

Refer to test report TCT170717E037

Appendix B: Photographs of EUT

Refer to test report TCT170717E037

*******END OF REPORT*******