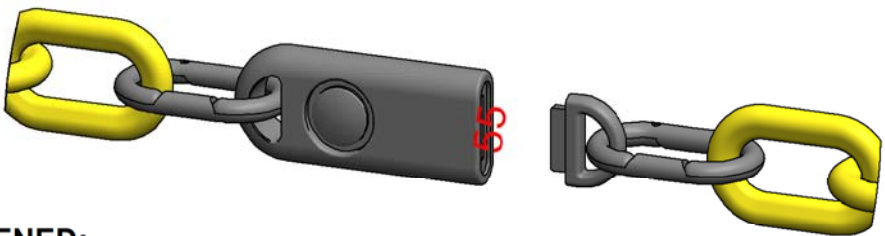


DEVICE CLOSED:

- SHOWN WITH RECOMMENDED MOUNTING METHOD

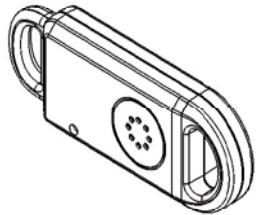


DEVICE OPENED:

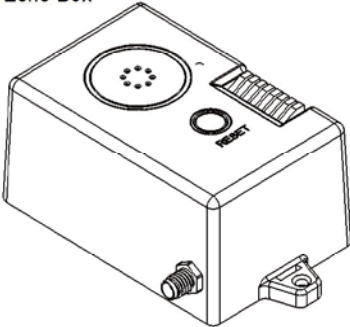
- WHEN OPENED, 95dB ALARM WILL SOUND
- THIS WILL CONTINUE UNTIL DEVICE IS CLOSED, OR AUTO SHUT OFF AFTER 3 MINUTES
- COMPATIBLE WITH SONR ECHO BOX, SEE SHEET 2 FOR DETAILS

ECHO BOX OPERATIONS

Lane Alarm



Echo Box



MODES

The echo box has A and B selector switch located in the front.

Operation modes Audio Beep and Alarm

B Mode

Not recommended for the use with the breakaway lane alarm. B Mode will disable use of the auxillary bank outputs.

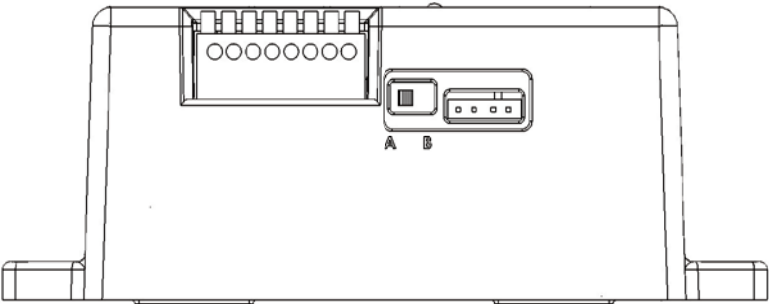
A Mode

During the lane alarm active alarm period, the echo box outputs an audible 5 seconds on and 5 seconds off alarm cycle. This continues until the lane alarm is closed, or the 3 minute lane alarm cycle has completed.

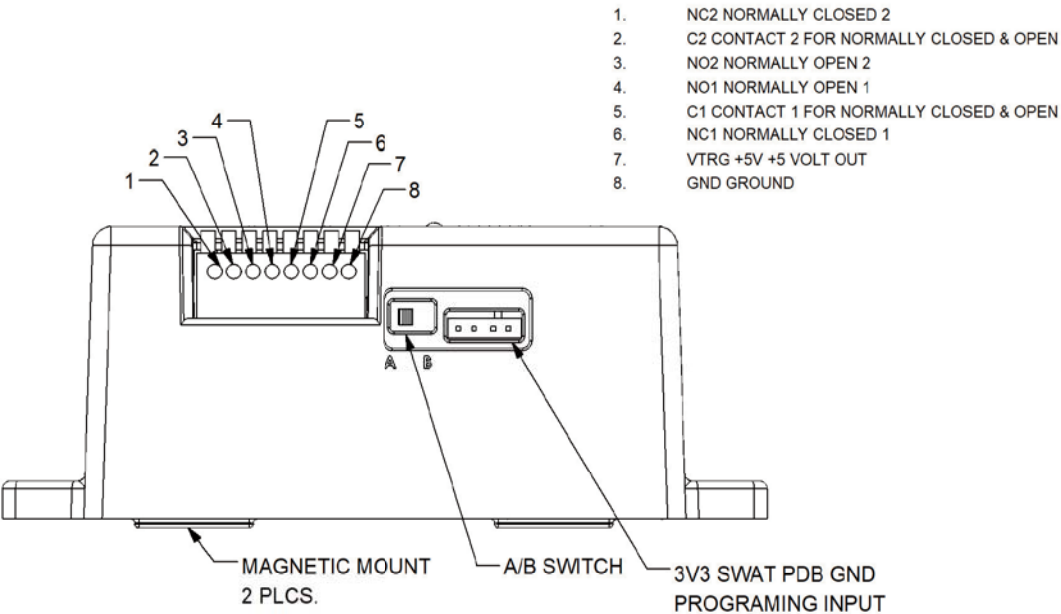
The echo box will need to be set in the A mode to correspond with the lane alarm remotely. The echo box has a reset button on the top to temporarily turn off the audio, in alarm mode, but the lane alarm will continue to alarm for up to 3 minutes.

The echo box audio in A mode will remain active during the lane alarm activation. The output terminals will also activate during the alarm sequence.

Echo Box



Illustrated above is showing a receiver with and without wire terminals. Both the hook and reciever run on batteries, which are included. Hook uses a CR2430 and the reciever uses 3AAA batteries



FCC Statement

This equipment has been tested and found to comply with the limits for a Class B digital device, pursuant to part 15 of the FCC rules. These limits are designed to provide reasonable protection against harmful interference in a residential installation. This equipment generates, uses and can radiate radio frequency energy and, if not installed and used in accordance with the instructions, may cause harmful interference to radio communications.

However, there is no guarantee that interference will not occur in a particular installation. If this equipment does cause harmful interference to radio or television reception, which can be determined by turning the equipment off and on, the user is encouraged to try to correct the interference by one or more of the following measures:

- Reorient or relocate the receiving antenna.
- Increase the separation between the equipment and receiver.
- Connect the equipment into an outlet on a circuit different from that to which the receiver is connected.
- Consult the dealer or an experienced radio/TV technician for help.

To assure continued compliance, any changes or modifications not expressly approved by the party.

Responsible for compliance could void the user's authority to operate this equipment. (Example– use only shielded interface cables when connecting to computer or peripheral devices).

This equipment complies with Part 15 of the FCC Rules. Operation is subject to the following two conditions:

- (1) This device may not cause harmful interference, and
- (2) This device must accept any interference received, including interference that may cause undesired operation.

FCC Radiation Exposure Statement:

The equipment complies with FCC Radiation exposure limits set forth for uncontrolled environment. This equipment should be installed and operated with minimum distance 20cm between the radiator and your body.