

Internal Photos

Photo 6 Internal of EUT



Photo 7 Internal of EUT



Photo 8 Appearance of PCB

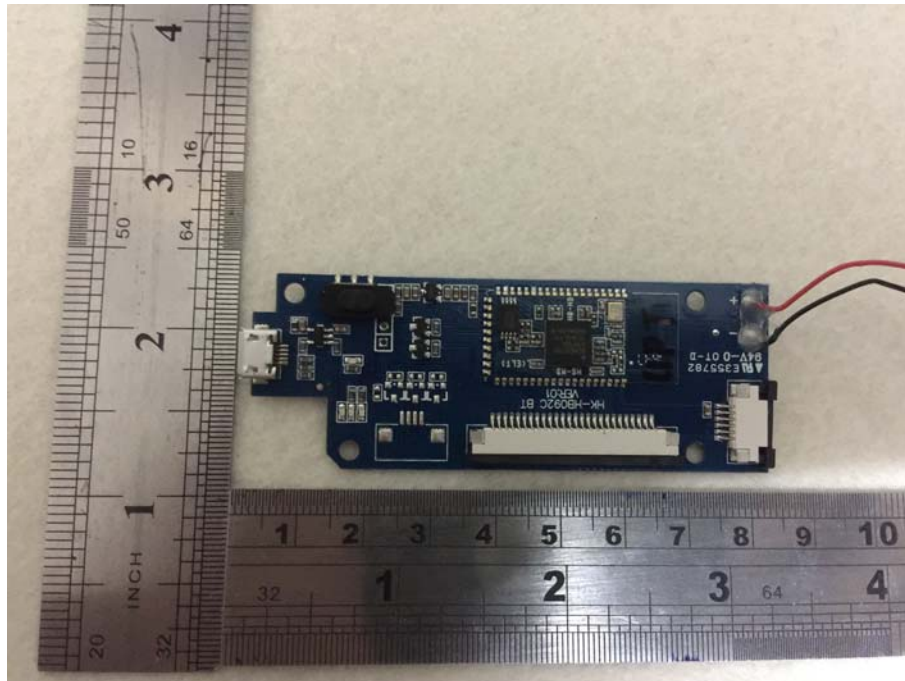
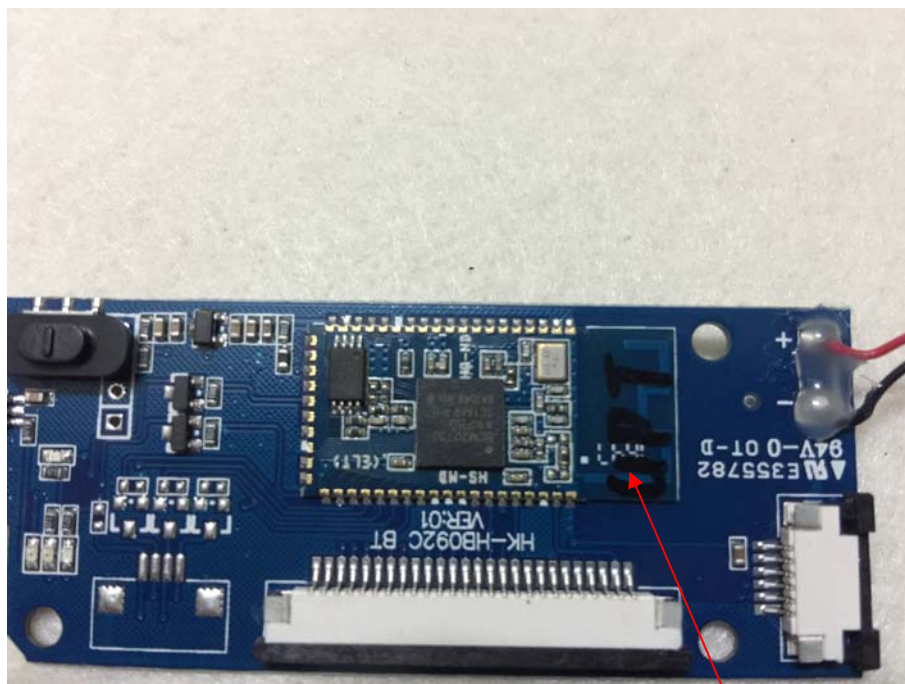


Photo 9 Appearance of PCB



BT PCB Antenna

A photograph of a custom PCB, likely for a sensor or actuator, placed next to a ruler for scale. The PCB is dark blue with various components including a central square chip, several circular pads, and a row of small holes. The ruler shows inches and centimeters, indicating the PCB is approximately 4 inches long.

A photograph of a disassembled mobile phone, showing the internal components. The phone is placed on a white surface with a ruler for scale. The ruler shows inches (0 to 4) and centimeters (0 to 16). The phone's internal components are visible, including the battery, logic board, camera module, and various connectors. The battery is a large, rectangular, silver-colored component with a black label that reads "H8092-TP", "HK-8248 ZC", "VER:01", and "E123995". The logic board is a green printed circuit board (PCB) with various components, including a camera module, a microphone, and a speaker. The camera module is a small, rectangular component with a lens and a flash. The microphone is a small, circular component. The speaker is a small, rectangular component. The phone's frame is made of a dark material, possibly plastic or metal. The phone is shown from the back, with the internal components exposed.

Photo 12 Appearance of Battery

