

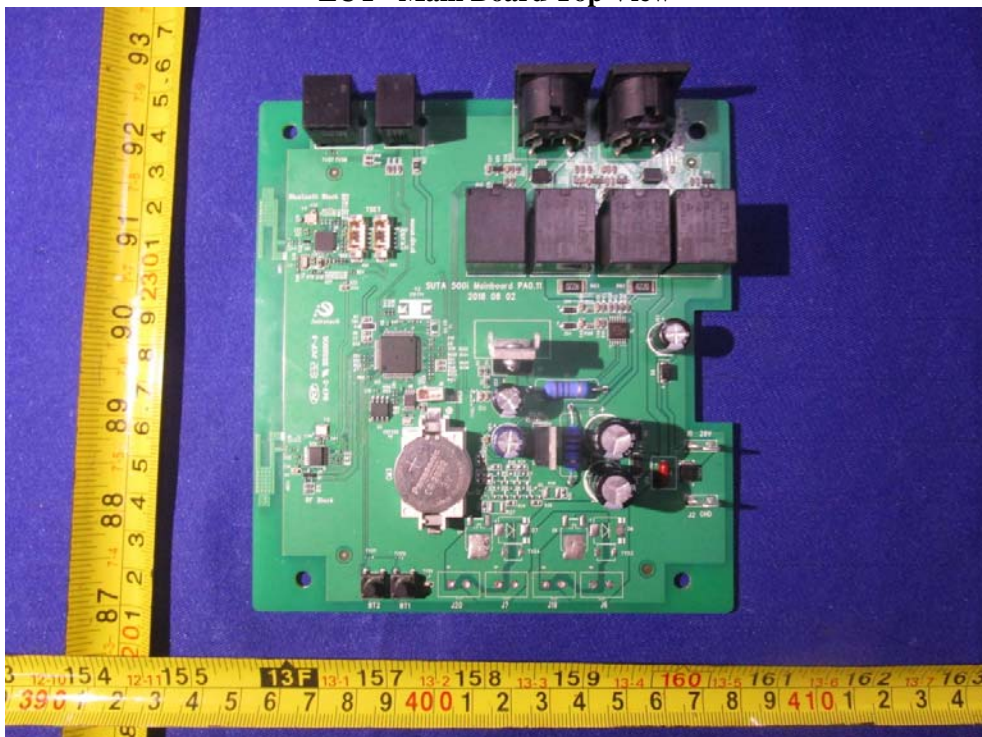
EXHIBIT C - EUT INTERNAL PHOTOGRAPHS

200i receiver:

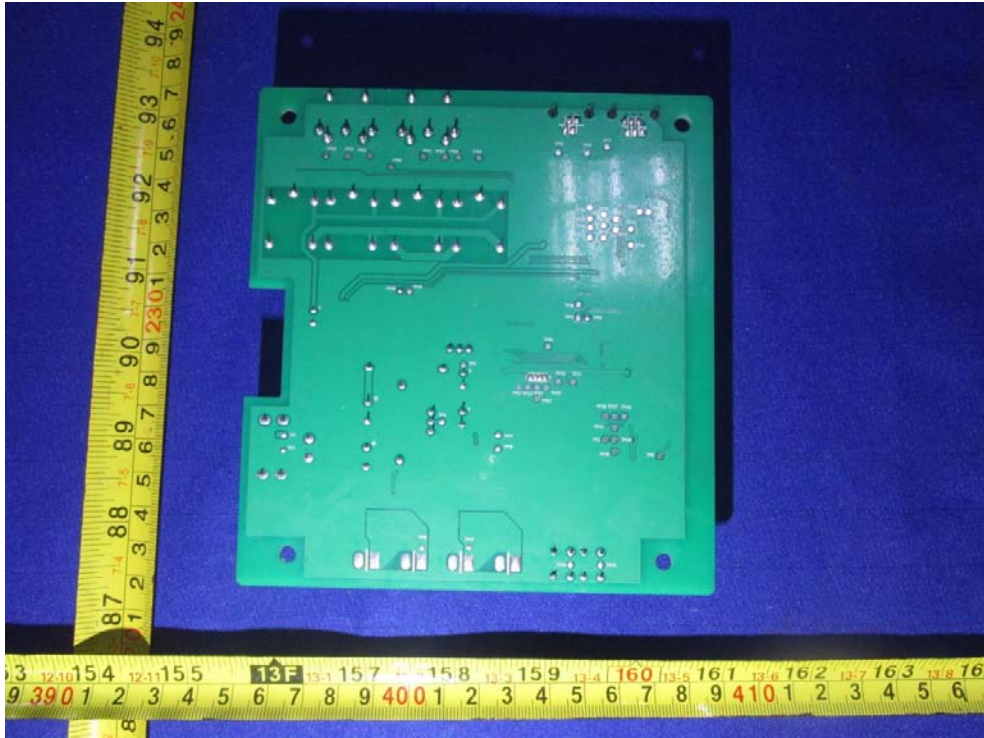
EUT – Uncover View



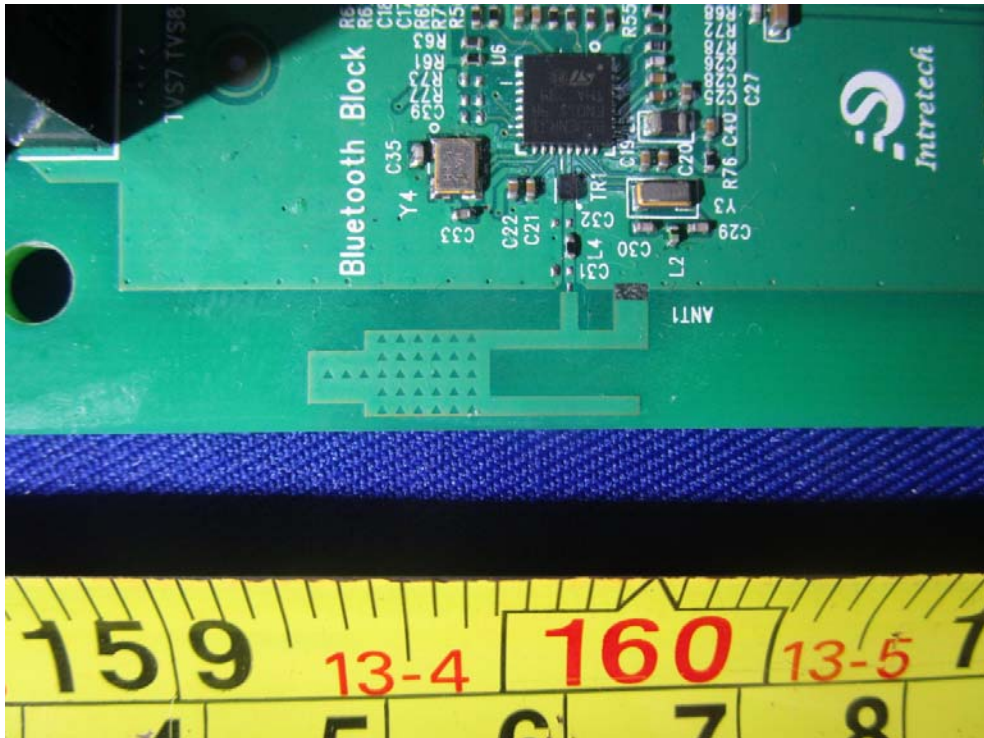
EUT –Main Board Top View



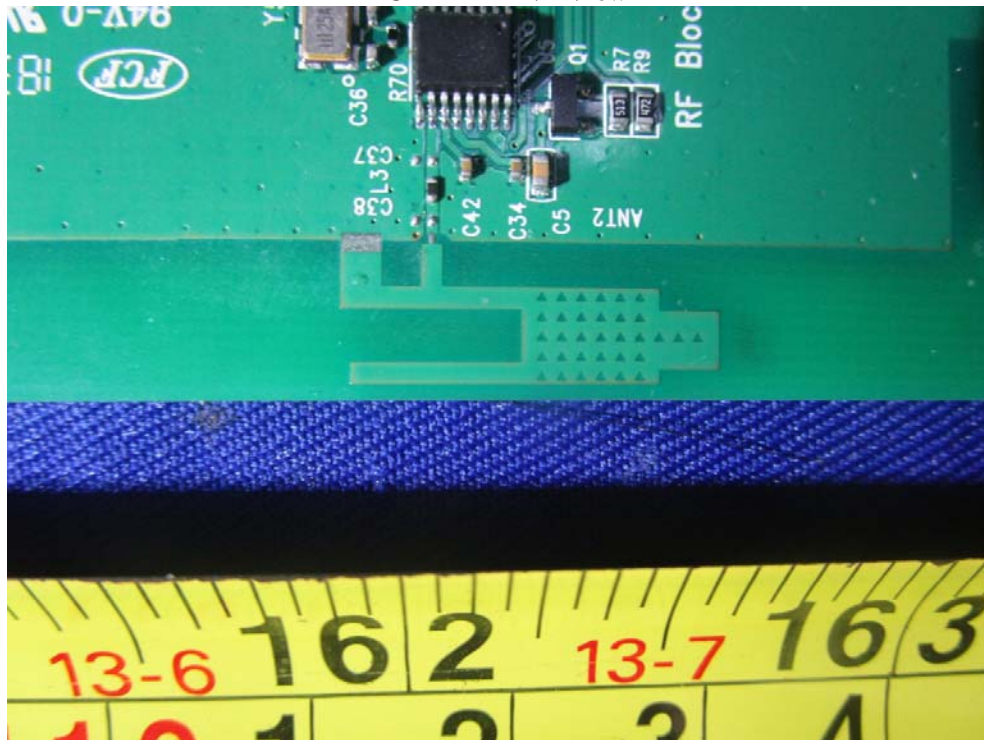
EUT – Main Board Bottom View



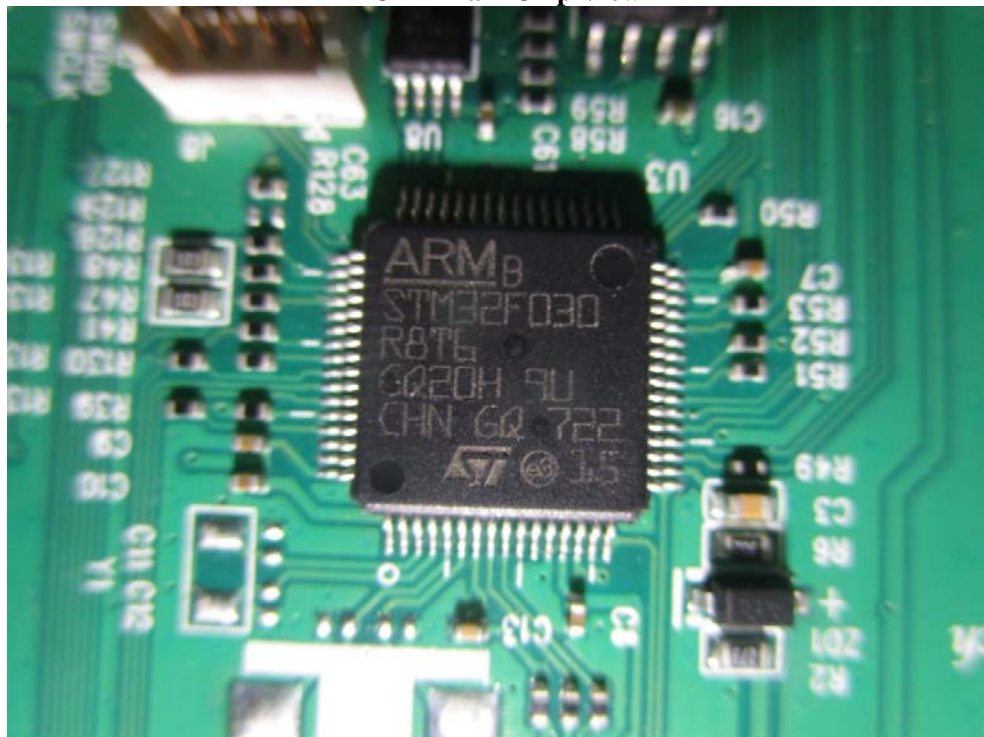
EUT – BT ANT View



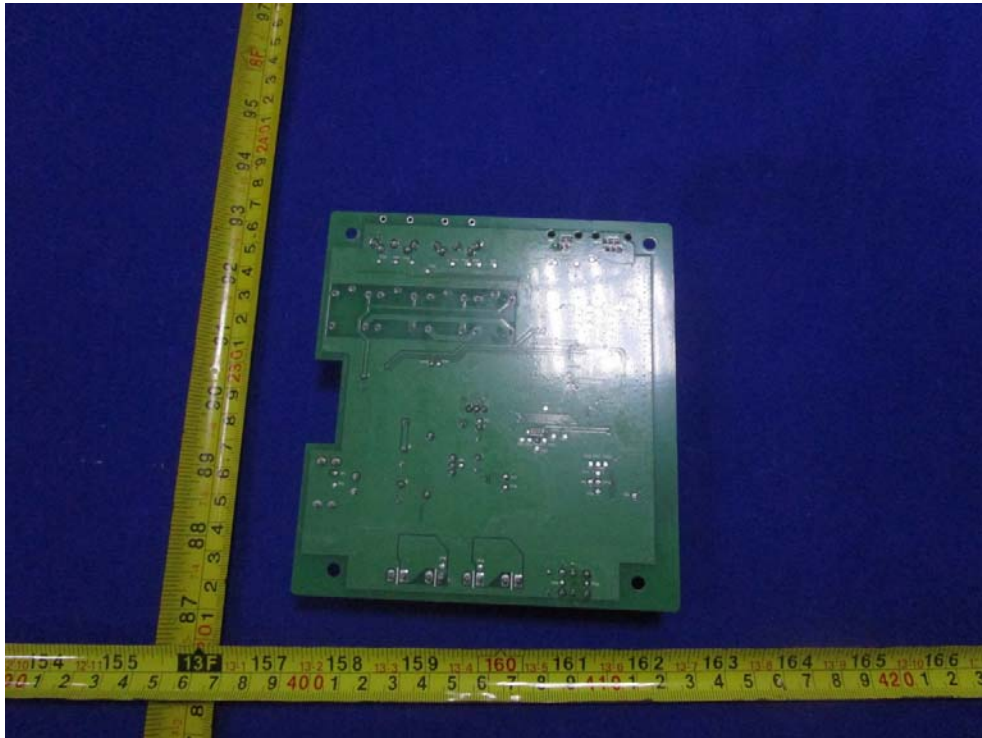
EUT – RF ANT View



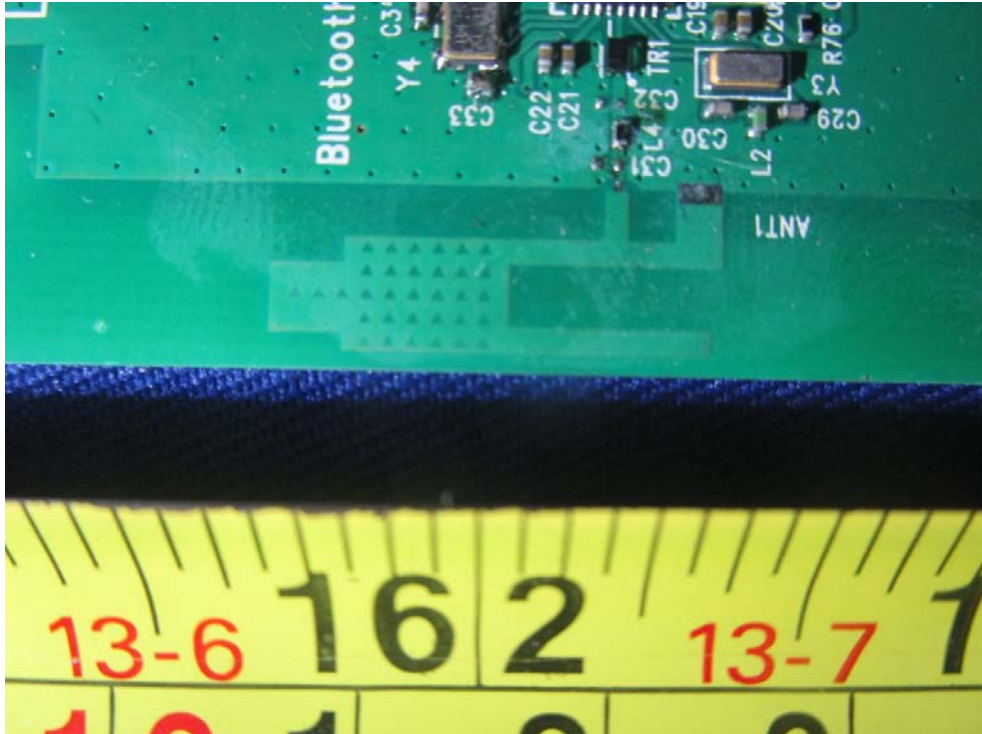
EUT – Main Chip View



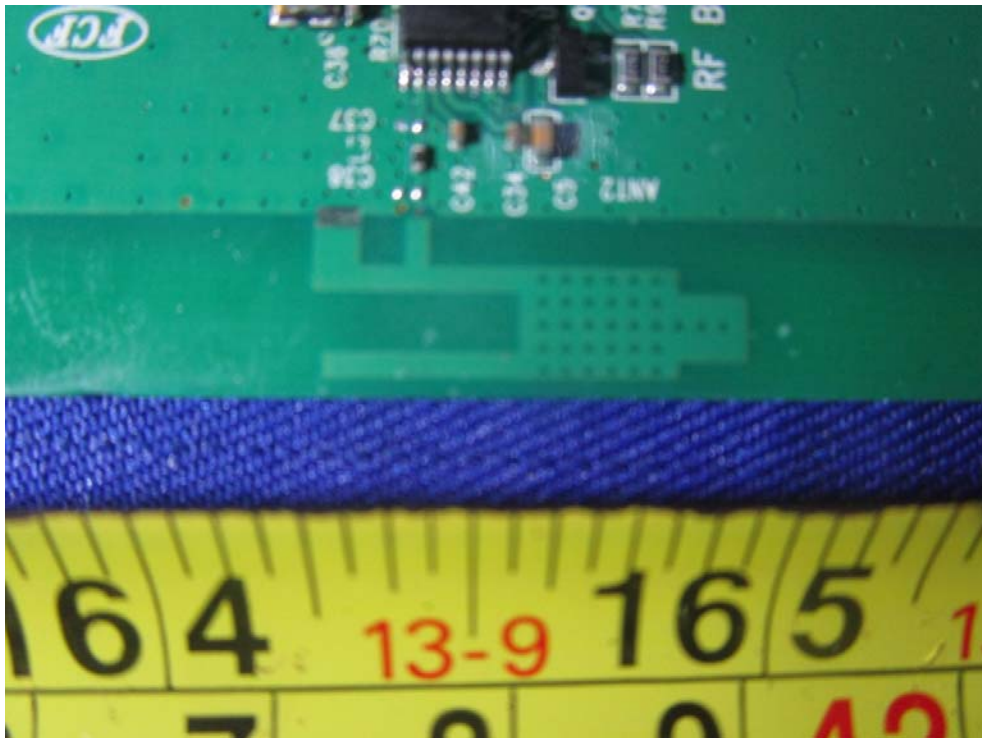
EUT – Main Board Bottom View



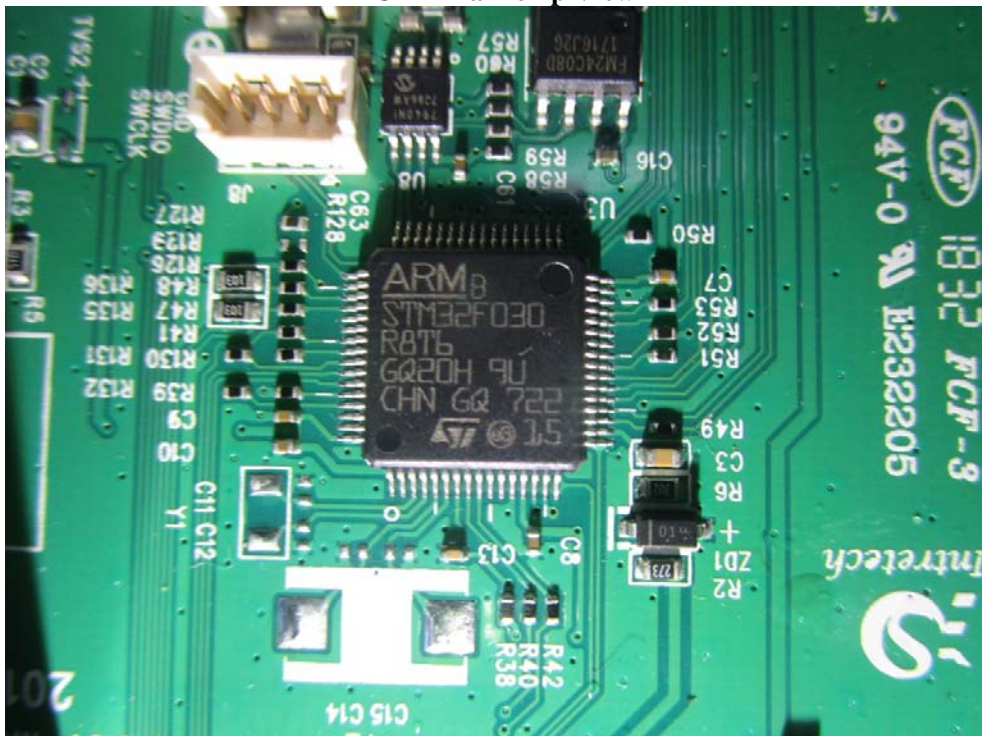
EUT – BT ANT View



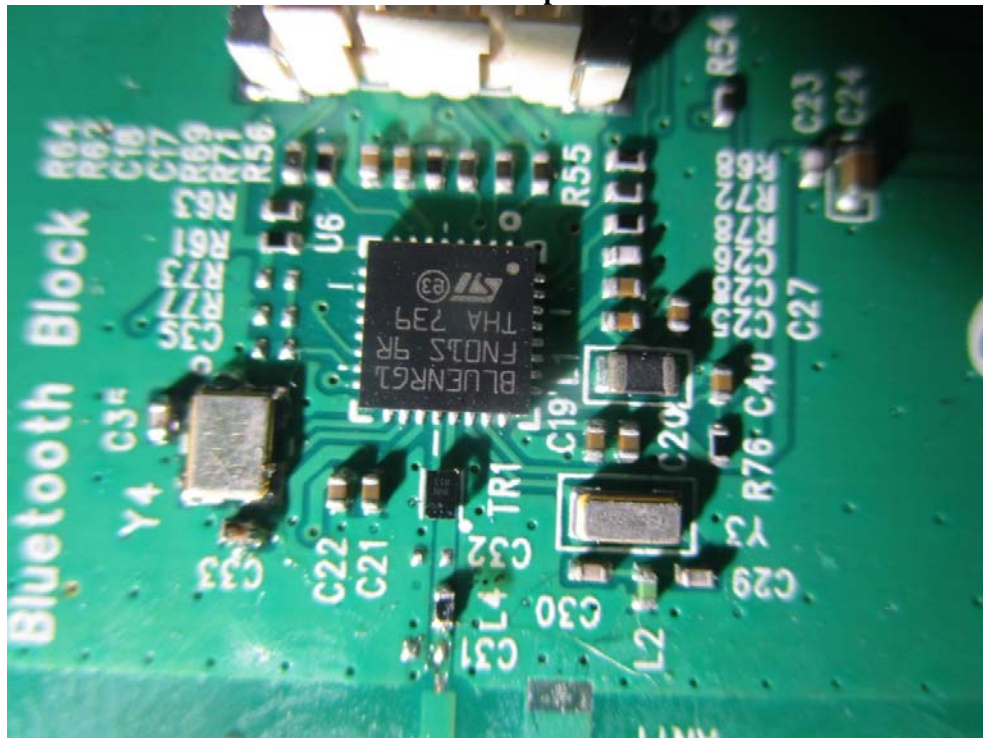
EUT – RF ANT View



EUT – Main chip View

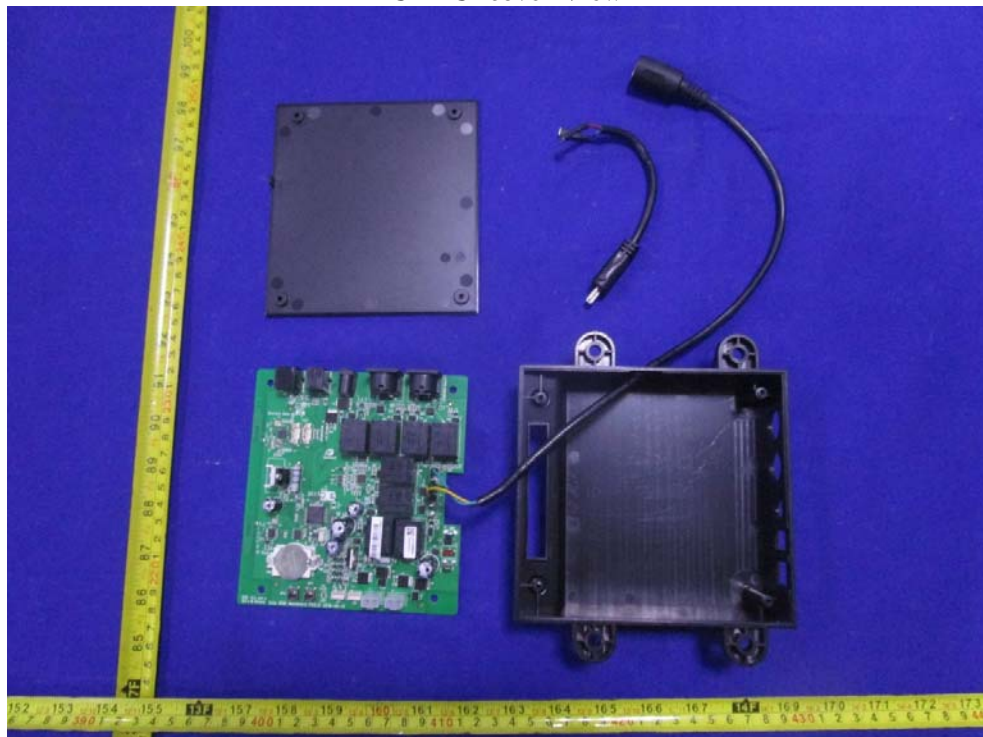


EUT – BT Chip View

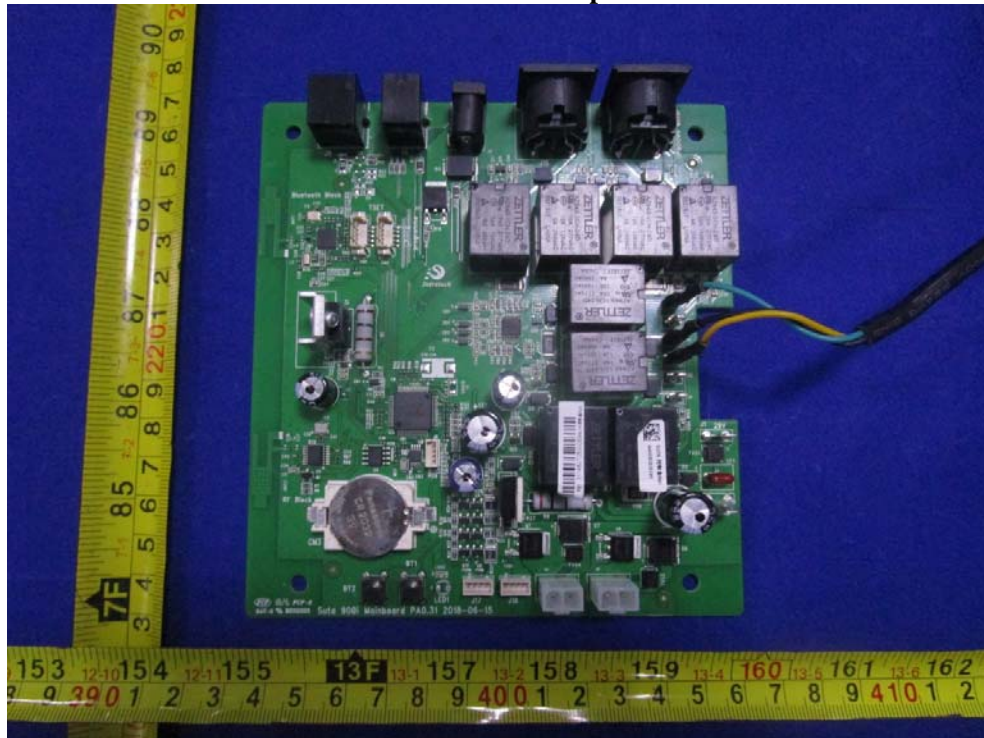


800i-L receiver:

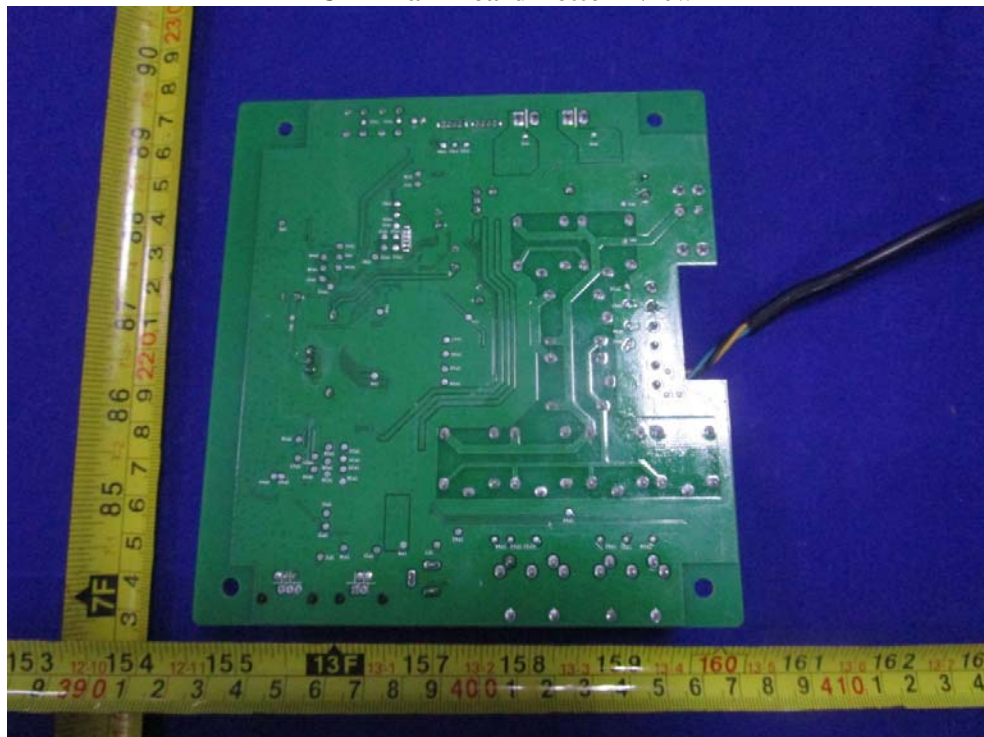
EUT –Uncover View



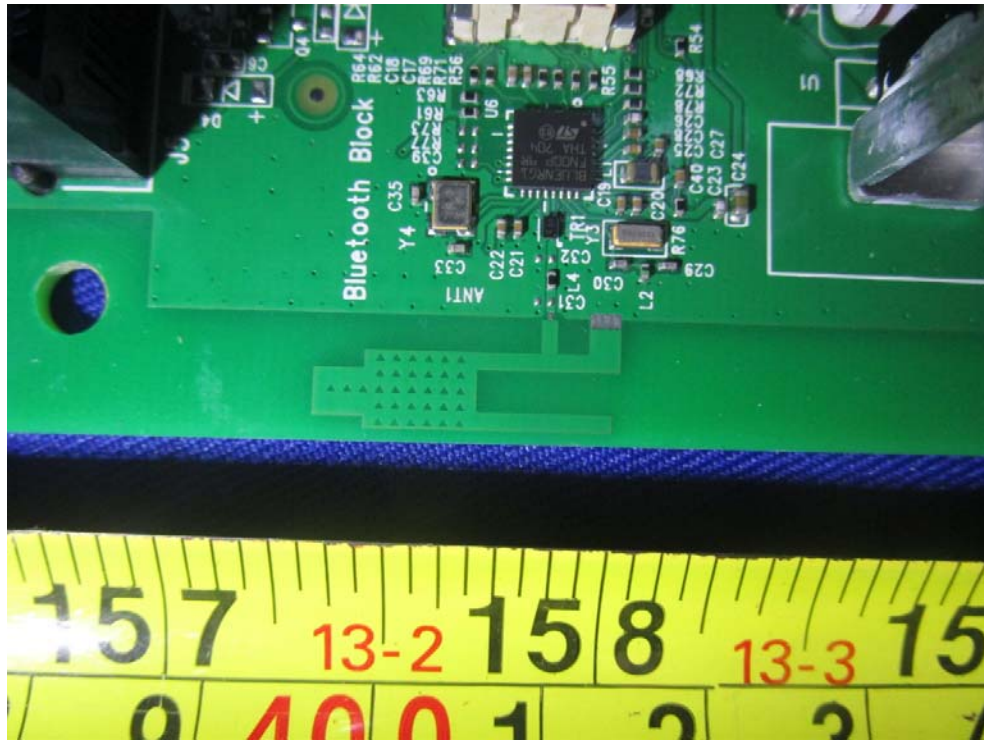
EUT –Main Board Top View



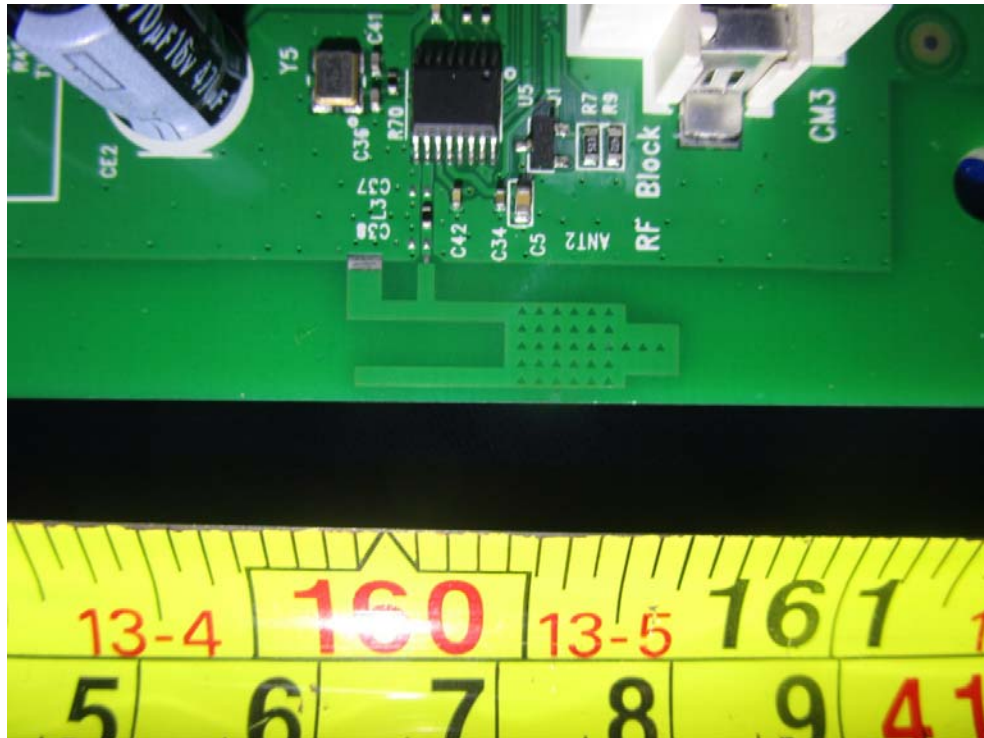
EUT –Main Board Bottom View



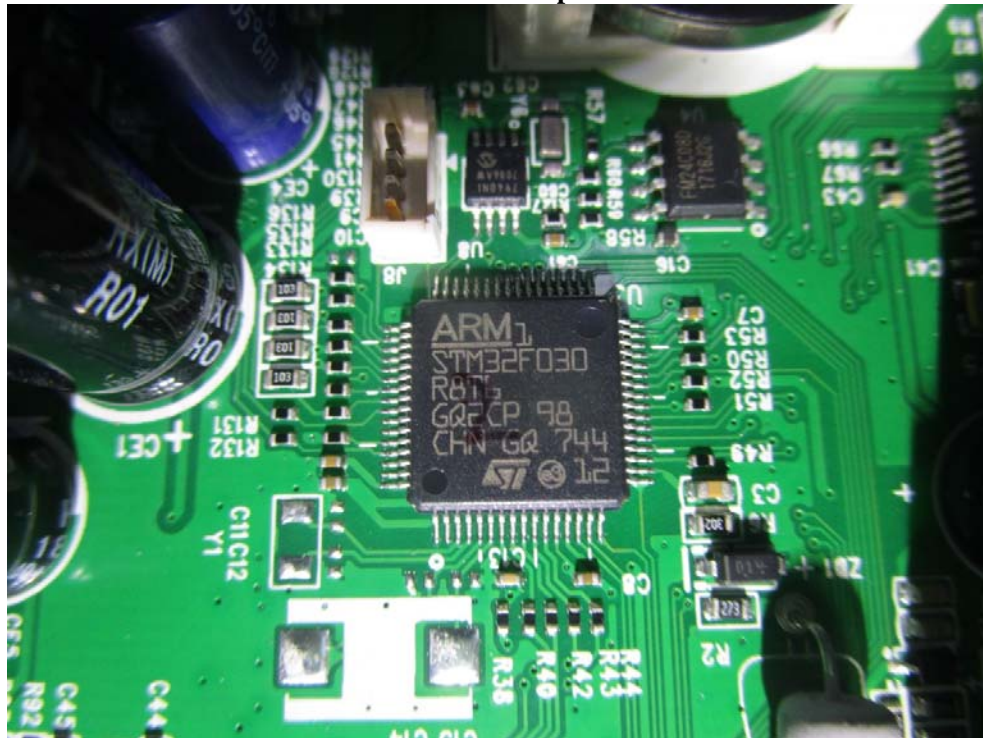
EUT – BT ANT View



EUT – RF ANT View



EUT – Main Chip View



EUT – BT Chip View

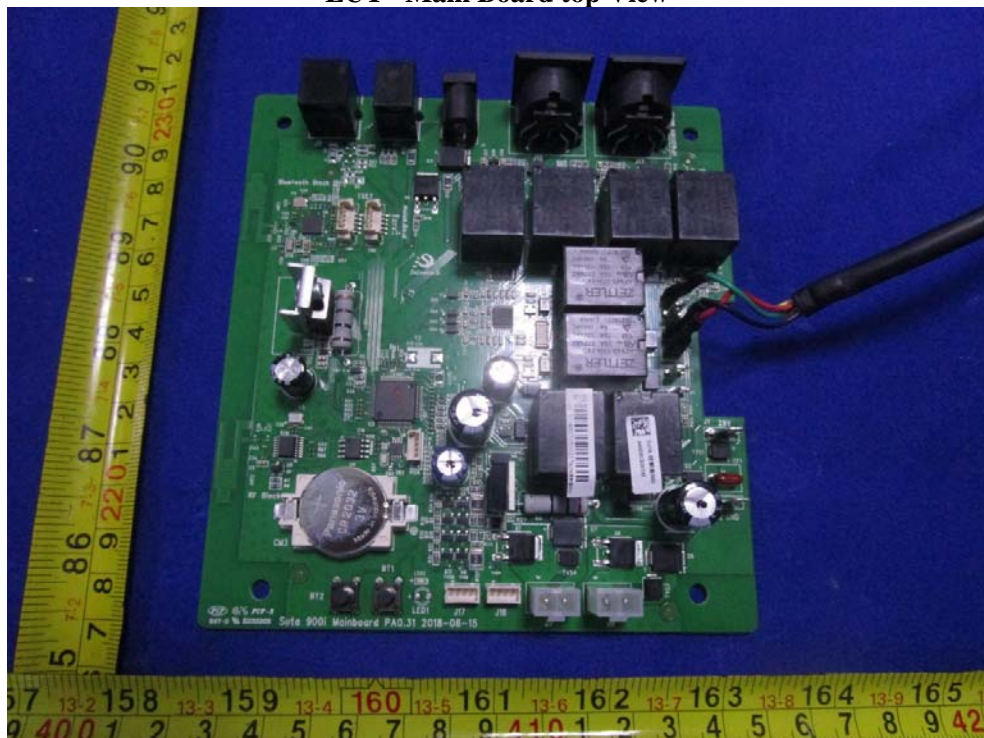


800i-H receiver:

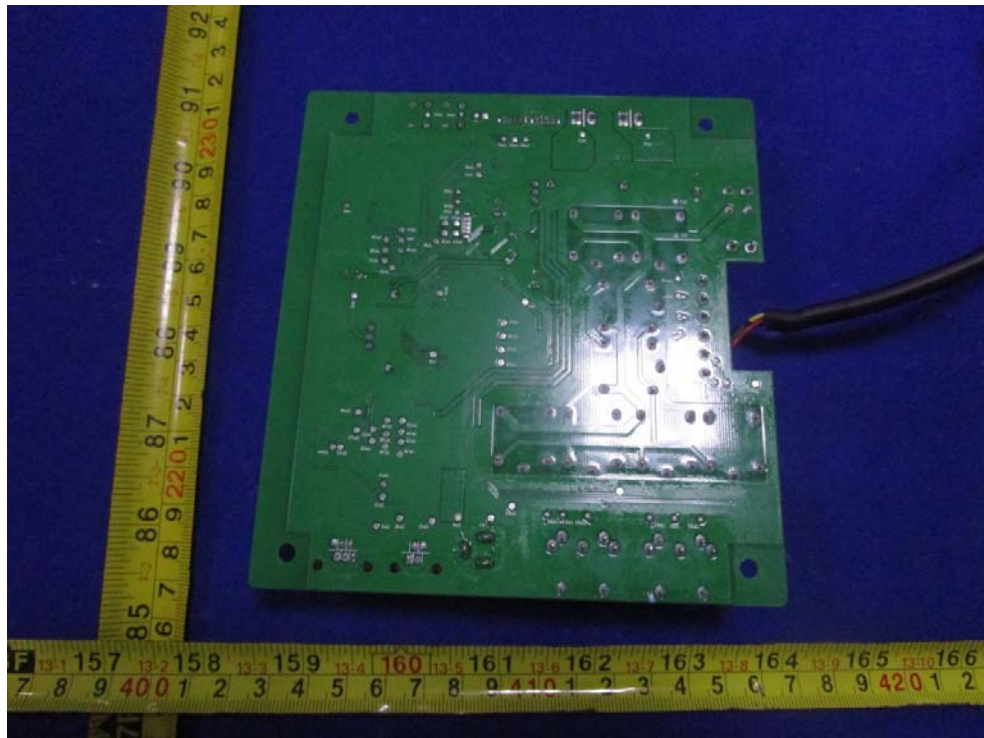
EUT –Uncover View



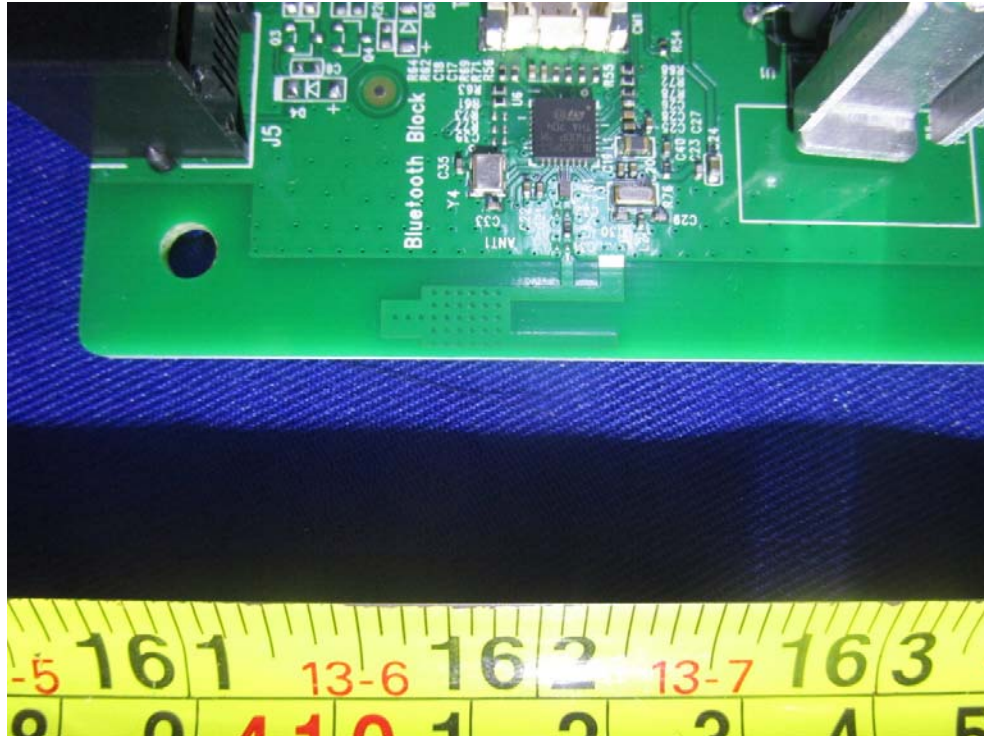
EUT –Main Board top View



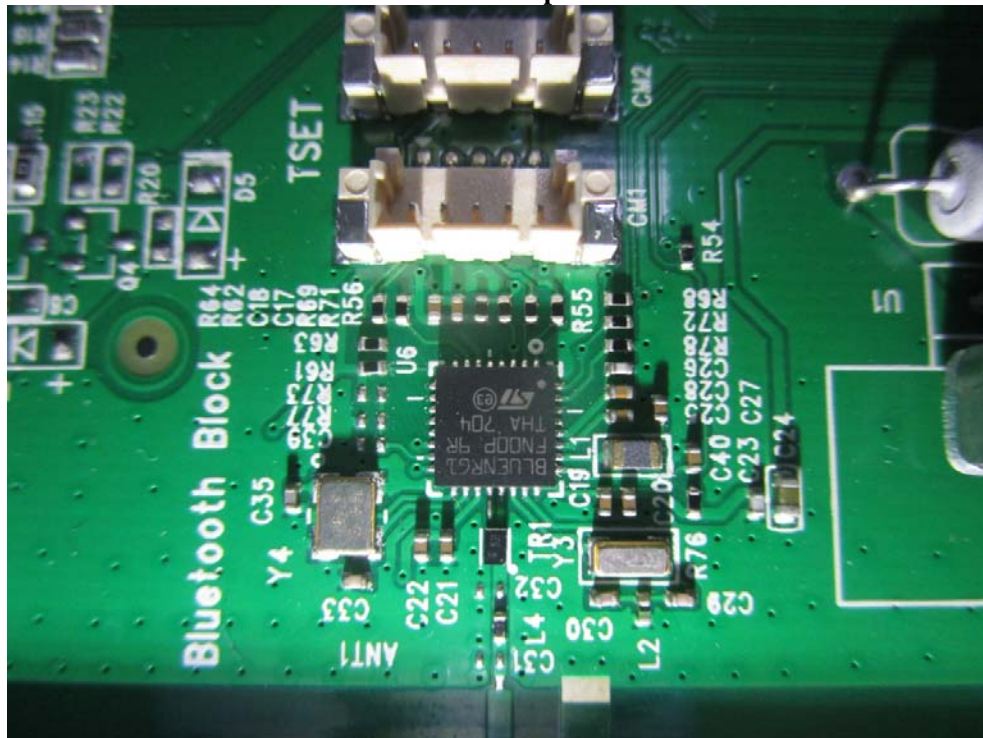
EUT –Main Board Bottom View



EUT – BT ANT View



EUT – BT Chip View

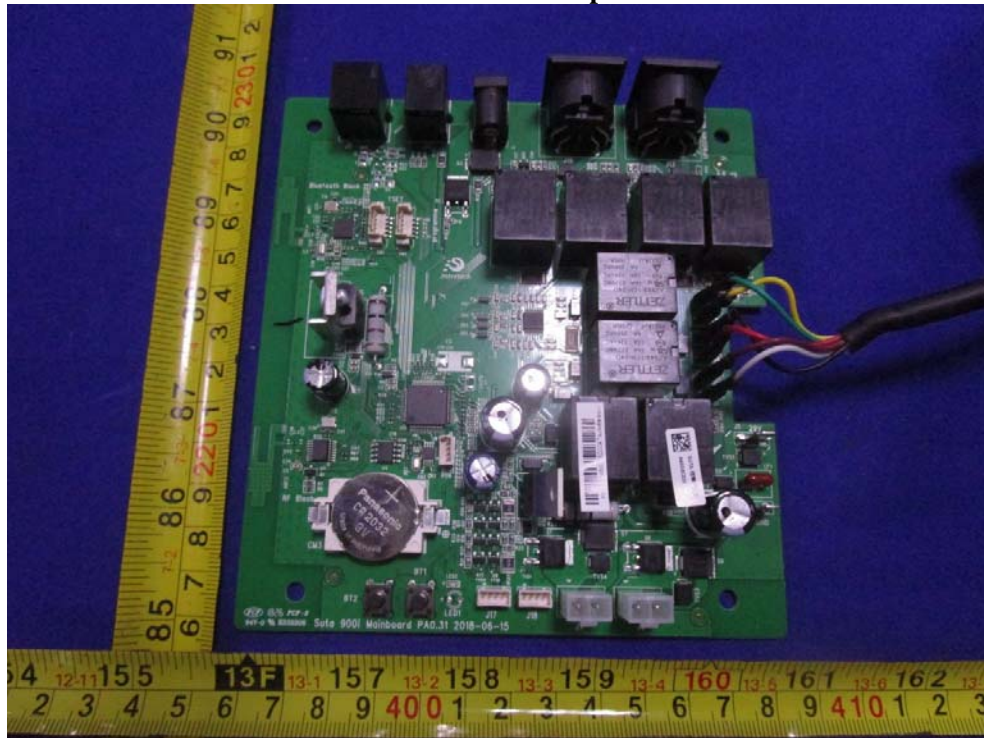


900i receiver:

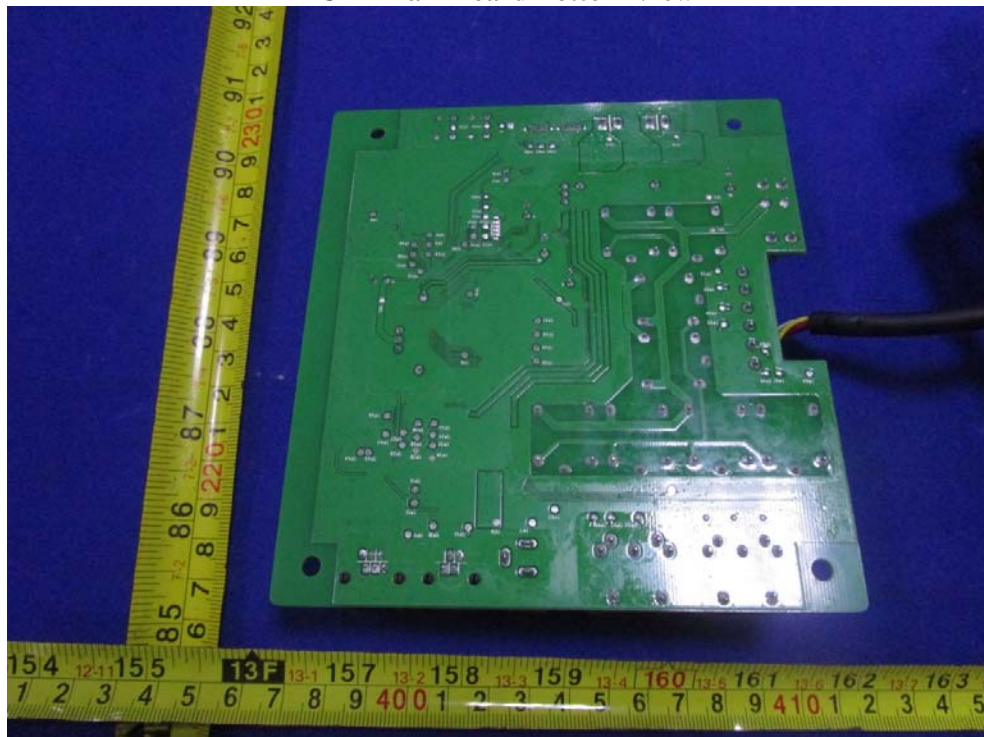
EUT –Uncover View



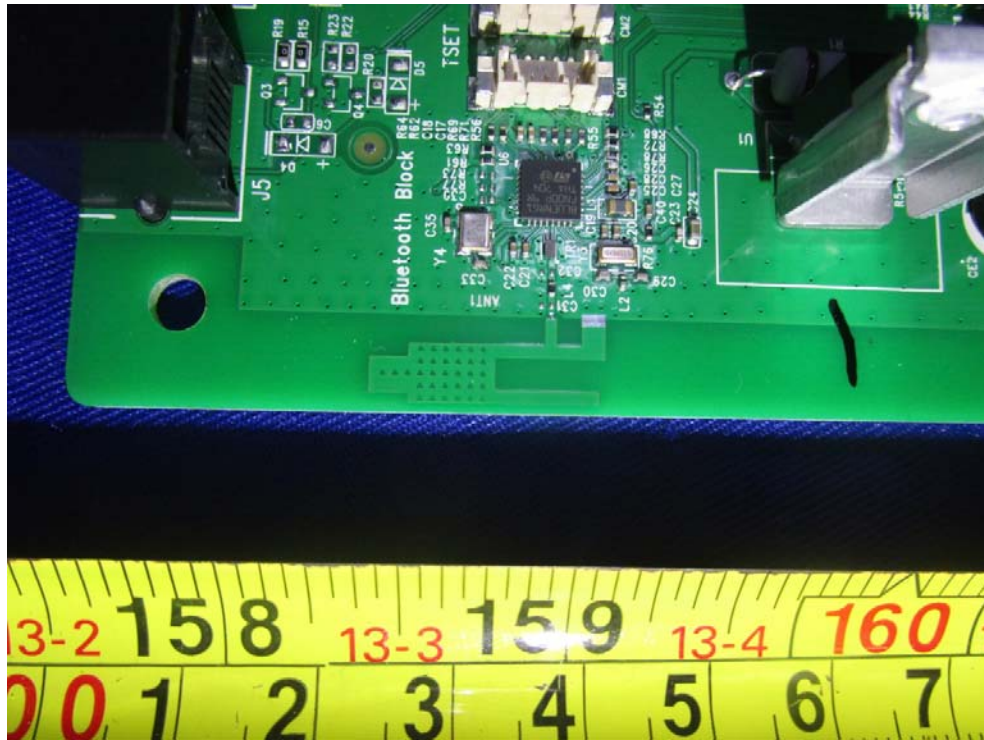
EUT –Main Board Top View



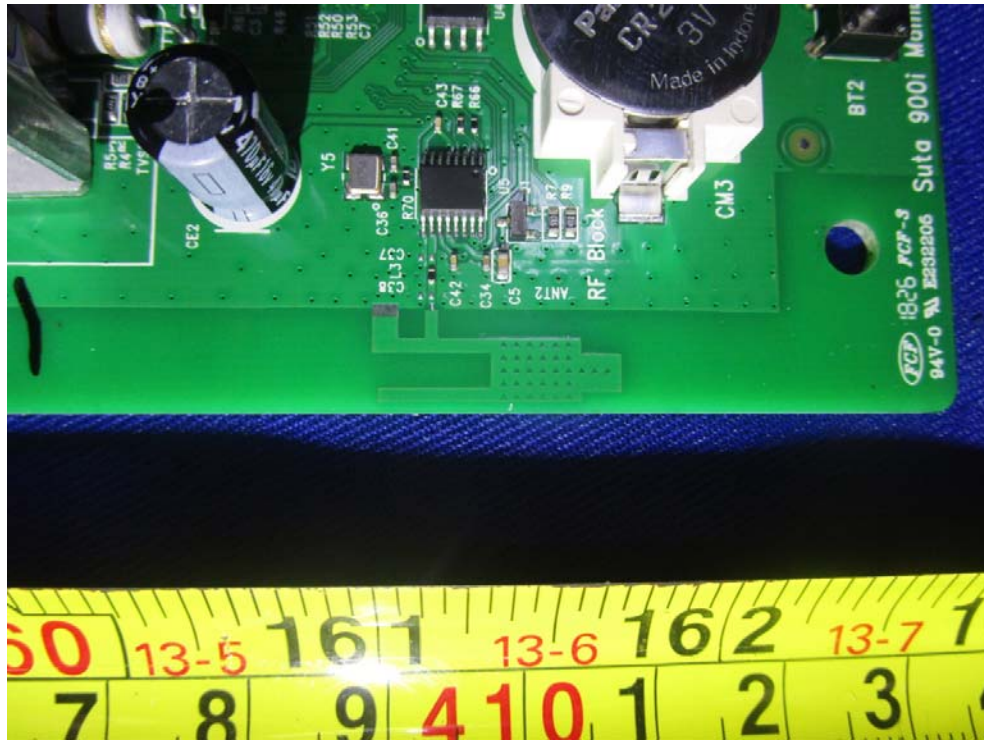
EUT –Main Board Bottom View



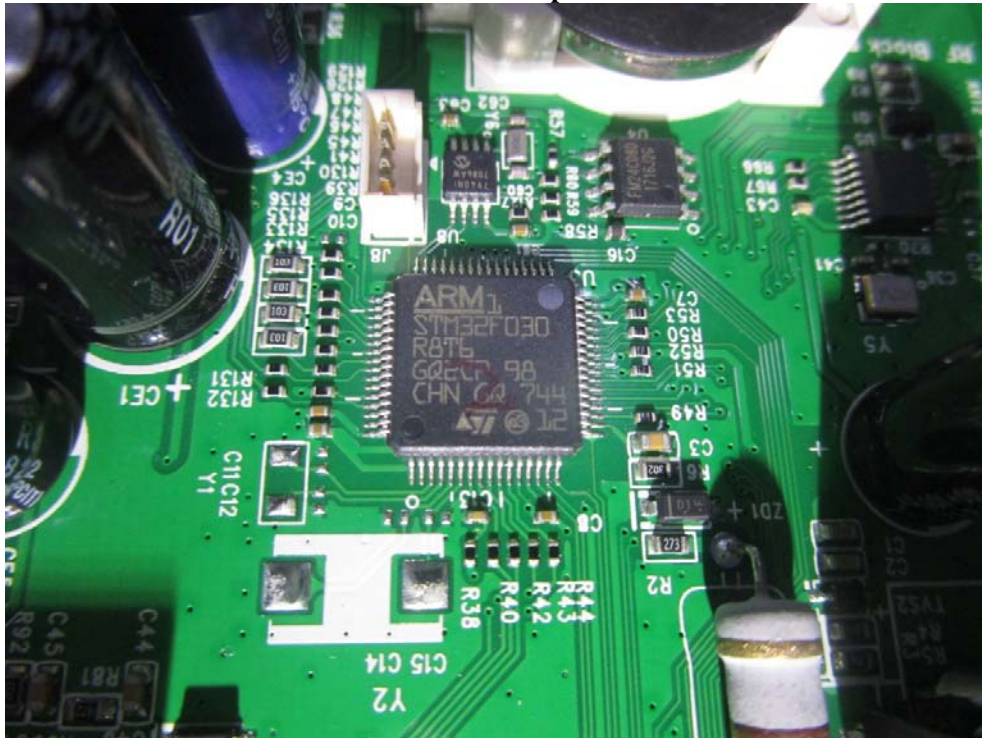
EUT – BT ANT View



EUT – RF ANT View



EUT – Main chip View



EUT – BT Chip View

