

WEKOME®

## Wireless Earphone



Model  
**VC02**

### FCC Warning Statement

Changes or modifications not expressly approved by the party responsible for compliance could void the user's authority to operate the equipment. This equipment has been tested and found to comply with the limits for a Class B digital device, pursuant to Part 15 of the FCC Rules. These limits are designed to provide reasonable protection against harmful interference in a residential installation. This equipment generates uses and can radiate radio frequency energy and, if not installed and used in accordance with the instructions, may cause harmful interference to radio communications. However, there is no guarantee that interference will not occur in a particular installation. If this equipment does cause harmful interference to radio or television reception, which can be determined by turning the equipment off and on, the user is encouraged to try to correct the interference by one or more of the following measures:

- Reorient or relocate the receiving antenna.
- Increase the separation between the equipment and receiver.
- Connect the equipment into an outlet on a circuit different from that to which the receiver is connected.
- Consult the dealer or an experienced radio/TV technician for help.

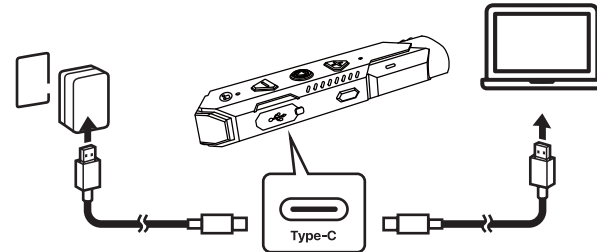
This device complies with part 15 of the FCC Rules. Operation is subject to the following two conditions:  
(1) This device may not cause harmful interference, and  
(2) This device must accept any interference received, including interference that may cause undesired operation.

The device has been evaluated to meet general RF exposure requirement. The device can be used in portable exposure condition without restriction.

CE FC RoHS  
© 2023 WEKOME. All rights reserved  
Supervised by Ramine Industrial(Asia) Co., Ltd.  
Shenzhen WK Technology Co., Ltd Reserves  
All Legal Rights

www.wekome.hk

### Charging the Earphone



Battery display: The phone status bar can display the power of the earphone (only when the mobile phone supports this function).

Charging indicator: During charging, the orange light stays on, and the green light stays on when it is fully charged.

Low battery alert: When the earphone is in a low battery, there will be a prompt tone "Dududu" every 4s and the orange light will flash double-flash. Please charge the earphone in time. (It is recommended to charge the earphone with a standard charger and the included charging cable.)

### Indicators

1. Power on: The green light flashes 3 times, followed by the green and orange lights flashing alternately. 2. Power off: The orange light flashes 3 times. 3. Wait for pairing: green and orange lights flash alternately. 4. Pairing succeeded: the green light flashes once every 5s. 5. Original mode: the green light flashes once every 5s. 6. Vocal mode: the green light flashes once every 5s. 7. Bass Mode: the green light flashes once every 5s. 8. Low battery alert: double-flash orange light every 4s. 9. Low battery shutdown: the orange light flashes 3 times. 10. Charging: orange light stays on. 11. Charging completed: the green light stays on.

### Frequently Asked Questions

1. The earphone cannot be paired with the phone? Check if the earphone is in pairing or reconnection mode, and check the phone's BT search function.  
2. The earphone won't turn on? Please check whether the power of the earphone is sufficient, and charge it for 30 minutes before turning it on.  
3. Can the battery be replaced? No, this earphone uses a non-removable battery.  
4. Can I use this earphone while driving? You can use this earphone while driving, but it is not recommended to use a BT headset while driving, and please turn down the volume while driving.  
5. The earphone disconnects from the phone? The effective range of this earphone is 10 meters indoors. If the distance between the mobile phone and the earphone exceeds 10 meters or there are multiple obstacles between them, the earphone will disconnect from the mobile phone. Please keep the earphone and the phone within the effective range.  
6. Why do I hear strange sounds after the earphone is connected to the computer or mobile phone? The BT wireless connection is sensitive to objects between the earphone and the connected device, so please check whether there is metal or other objects that affect the connection in the range.  
7. After the earphone is connected to the phone, can I control the apps on the phone through the earphone? As the settings of the application may vary, some functions cannot be controlled by the earphone.

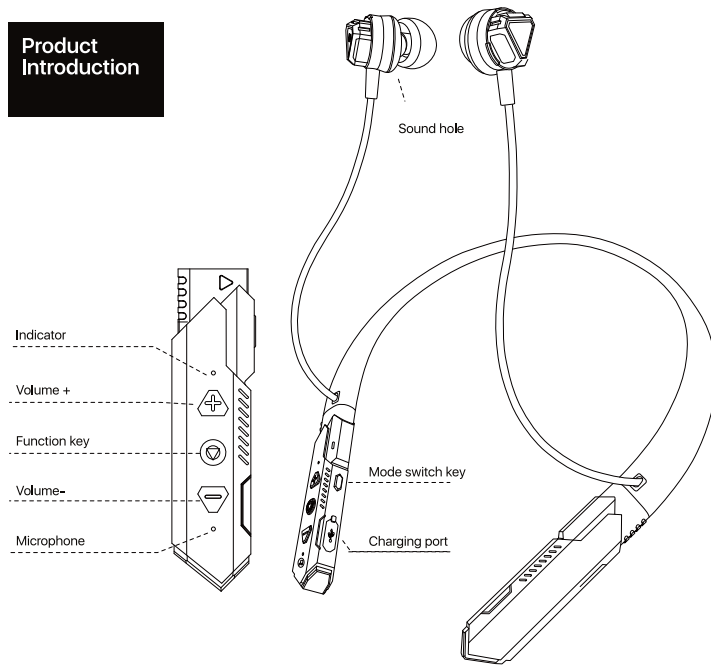
### DEAR CUSTOMERS

Thank you for choosing our product.  
Please read this manual carefully before use and keep it properly for future reference.  
Before using it for the first time, please make sure that the earphone is fully charged, and please use the charger to charge the product when the battery is low.

### Product Parameters

Product model: VC02 • Wireless version: V5.2 • Transmission distance:  $\geq 10\text{m}$  • Frequency: 20Hz-20KHz  
Impedance: 32 $\Omega$  • Rated power: 6mW • Driver unit: 10mm • Battery capacity: 250mAh • Input: DC5V/700mA  
Play time: about 60h • Standby time: 500 days • Charging time: 30 minutes • Product net weight: 43g  
Product color: yellow

### Product Introduction



### Wireless Connection Operation

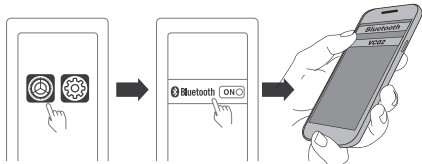
BT pairing: Press and hold the Function key for 5s, and the earphone will turn on and enter the pairing state with a prompt tone "Power On Pairing", and the indicator light flashes. Find the pairing name "VC02" on the phone and click to connect with the earphone. (If you can't find the BT pairing name, turn off and then turn on the phone BT to try again.)

Connection succeeded: with a prompt tone "Connected".

Re-connection: After the first successful connection, the earphone will reconnect with the last paired device once turned on. (Tip: for some mobile phones users need to enter the pairing password "0000".)

Other functions: Timed out and not connected. If the earphone is not successfully connected to a device within 2 minutes while it is in the pairing state, it will automatically turn off.

BT disconnects: After the connection is successful, if the BT of the mobile phone is turned off or the distance between the phone and the earphone exceeds the effective range (10m in open environment), the earphone will be disconnected, and enter pairing state; if it is not connected in 2 minutes, the earphone will shut down automatically.



### Power on/off

Power on: In the shutdown state, press and hold the Function key for 2s to turn on the earphone with a prompt tone "Power On" (It will automatically enter the pairing mode in 1-5s with a prompt tone "Power On Pairing").

Power off: When powered on, press and hold the Function key for 3s, and the earphone will disconnect from the device and shut down with a prompt tone "Power Off".

### Music mode

1. Play/pause music: Press the Function key once; Previous song: Press and hold the Volume - key for 2s; Next song: Press and hold the Volume + key for 2s; Volume-: Press Volume- key once; Volume+: Press Volume+ key once; 2. Call mode: Answer/end calls: Press the Function key once; Reject a call: Press and hold the Function key for 1s; 3. Voice assistant: Enable the voice assistant: Press the Function key 3 times; 4. Mode switching: Original Mode; Bass (heavy bass)/Low Latency; Vocal: press the mode switch key once

### Low latency mode

When powered on, the default sound effect is Original, press the Mode Switch Key once to switch among Original, Bass and Vocal mode. (When it is on Bass EQ, the low latency mode (game mode) is enabled.)

### Reset

When the earphone is mistakenly connected with other mobile phones, press and hold the Volume + and Volume - keys for 5s when powered on, and there will be a prompt tone "Du+ Pairing", the earphone will reset and disconnect from the misconnected phone, at which time users can try to connect the earphone with the correct phone.

### Warranty

This product is covered under warranty for a period of one year from the date of sale limited to normal use and maintenance of the machine parts, materials and functions. Problems and failures verified upon further identification will be provided free repair and replacement parts.

This warranty does not apply

(A) to a product that is out of warranty

(B) to damage caused by operating the product outside the permitted or intended uses described by WK

(C) to a product that has been disassembled, repaired or modified without the authorization of WK

(D) if warranty card and proof of purchase cannot be presented

(E) to damage caused by earthquake, fire or other external causes, natural disasters, etc/因自然

Note: The warranty does not include product transport costs and does not provide on-site maintenance services.

WEKOME reserves all rights to clarify this warranty interpretation.



### Warranty Feedback Form (Tick Off)

☐ A. No sound ☐ B. Sound quality deteriorates  
☐ C. Buttons cannot be operated ☐ D. Unable to pair with other devices  
☐ E. Can not recharge ☐ F. Others

Time Of Purchasing

When Did The Problem Occur

Dealers Of Sale

User's Contact Info