
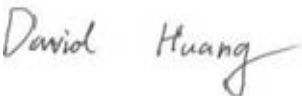



EMC TEST REPORT



Report No.: 17070023-FCC-E

Supersede Report No: N/A

Applicant	Anda Technologies S.A.C	
Product Name	Anda Watch	
Model No.	W010R1	
Serial No.	N/A	
Test Standard	FCC Part 15 Subpart B Class B:2016, ANSI C63.4: 2014	
Test Date	January 13 to February 05, 2017	
Issue Date	February 06, 2017	
Test Result	<input checked="" type="checkbox"/> Pass <input type="checkbox"/> Fail	
Equipment complied with the specification <input checked="" type="checkbox"/>		
Equipment did not comply with the specification <input type="checkbox"/>		
		
Loren Luo Test Engineer	David Huang Checked By	
This test report may be reproduced in full only Test result presented in this test report is applicable to the tested sample only		

Issued by:

SIEMIC (SHENZHEN-CHINA) LABORATORIES

Zone A, Floor 1, Building 2 Wan Ye Long Technology Park

South Side of Zhoushi Road, Bao' an District, Shenzhen, Guangdong China 518108

Phone: +86 0755 2601 4629801 Email: China@siemic.com.cn

Laboratories Introduction

SIEMIC, headquartered in the heart of Silicon Valley, with superior facilities in US and Asia, is one of the leading independent testing and certification facilities providing customers with one-stop shop services for Compliance Testing and Global Certifications.



In addition to testing and certification, SIEMIC provides initial design reviews and compliance management throughout a project. Our extensive experience with China, Asia Pacific, North America, European, and International compliance requirements, assures the fastest, most cost effective way to attain regulatory compliance for the global markets.

Accreditations for Conformity Assessment

Country/Region	Scope
USA	EMC, RF/Wireless, SAR, Telecom
Canada	EMC, RF/Wireless, SAR, Telecom
Taiwan	EMC, RF, Telecom, SAR, Safety
Hong Kong	RF/Wireless, SAR, Telecom
Australia	EMC, RF, Telecom, SAR, Safety
Korea	EMI, EMS, RF, SAR, Telecom, Safety
Japan	EMI, RF/Wireless, SAR, Telecom
Singapore	EMC, RF, SAR, Telecom
Europe	EMC, RF, SAR, Telecom, Safety

Test Report	17070023-FCC-E
Page	3 of 36

This page has been left blank intentionally.

CONTENTS

1. REPORT REVISION HISTORY	5
2. CUSTOMER INFORMATION	5
3. TEST SITE INFORMATION	5
4. EQUIPMENT UNDER TEST (EUT) INFORMATION	6
5. TEST SUMMARY	8
6. MEASUREMENTS, EXAMINATION AND DERIVED RESULTS	9
6.1 AC POWER LINE CONDUCTED EMISSIONS.....	9
6.2 RADIATED EMISSIONS	15
ANNEX A. TEST INSTRUMENT	20
ANNEX B. EUT AND TEST SETUP PHOTOGRAPHS	21
ANNEX C. TEST SETUP AND SUPPORTING EQUIPMENT	32
ANNEX D. USER MANUAL / BLOCK DIAGRAM / SCHEMATICS / PARTLIST	35
ANNEX E. DECLARATION OF SIMILARITY.....	36

1. Report Revision History

Report No.	Report Version	Description	Issue Date
17070023-FCC-E	NONE	Original	February 06, 2017

2. Customer information

Applicant Name	Anda Technologies S.A.C
Applicant Add	Avenida Santa Cruz No. 888, Piso 4, Miraflores, Lima, Peru
Manufacturer	Borqs Beijing Ltd.
Manufacturer Add	Tower A, Building B23, Universal Business Park, No. 10 Jiuxianqiao Road, Chaoyang District Beijing, 100015 China

3. Test site information

Lab performing tests	SIEMIC (Shenzhen-China) LABORATORIES
Lab Address	Zone A, Floor 1, Building 2 Wan Ye Long Technology Park South Side of Zhoushi Road, Bao' an District, Shenzhen, Guangdong China 518108
FCC Test Site No.	718246
IC Test Site No.	4842E-1
Test Software of Radiated Emission	Radiated Emission Program-To Shenzhen v2.0
Test Software of Conducted Emission	EZ-EMC(ver.lcp-03A1)

4. Equipment under Test (EUT) Information

Description of EUT:	Anda Watch
Main Model:	W010R1
Serial Model:	N/A
Antenna Gain:	GSM850: -5.00dBi PCS1900: 1.4dBi UMTS-FDD Band V: -5.00dBi UMTS-FDD Band IV: 0.84dBi UMTS-FDD Band II: 1.4dBi LTE Band II: 1.41dBi LTE Band IV: 0.84dBi WIFI: -1.5dBi Bluetooth/BLE: -1.5dBi GPS: 0.48dBi
Antenna Type:	PIFA antenna
Input Power:	Adapter: Model: ASUC37a-050100 Input: AC100-240V~50/60Hz,0.3A Output: DC 5.0V,1.0A Battery: Spec: 4.35V,400mAh
Equipment Category :	JBP
Type of Modulation:	GSM / GPRS: GMSK EGPRS: GMSK,8PSK UMTS-FDD: QPSK LTE Band: QPSK, 16QAM 802.11b/g/n: DSSS, OFDM Bluetooth: GFSK, π /4DQPSK, 8DPSK BLE: GFSK GPS: BPSK

RF Operating Frequency (ies):	<p>GSM850 TX: 824.2 ~ 848.8 MHz; RX: 869.2 ~ 893.8 MHz</p> <p>PCS1900 TX: 1850.2 ~ 1909.8 MHz; RX: 1930.2 ~ 1989.8 MHz</p> <p>UMTS-FDD Band V TX: 826.4 ~ 846.6 MHz; RX: 871.4 ~ 891.6 MHz</p> <p>UMTS-FDD Band IV TX: 1712.4 ~ 1752.6 MHz; RX : 2112.4 ~ 2152.6 MHz</p> <p>UMTS-FDD Band II TX: 1852.4 ~ 1907.6 MHz; RX: 1932.4 ~ 1987.6 MHz</p> <p>LTE Band II TX: 1850.7 ~ 1909.3 MHz; RX : 1930.7 ~ 1989.3 MHz</p> <p>LTE Band IV TX: 1710.7 ~ 1754.3 MHz; RX : 2110.7 ~ 2154.3 MHz</p> <p>WIFI: 802.11b/g/n(20M): 2412-2462 MHz</p> <p>Bluetooth& BLE: 2402-2480 MHz</p> <p>GPS: 1575.42 MHz</p>
Number of Channels:	<p>GSM 850: 124CH</p> <p>PCS1900: 299CH</p> <p>UMTS-FDD Band V: 102CH</p> <p>UMTS-FDD Band IV: 202CH</p> <p>UMTS-FDD Band II: 277CH</p> <p>WIFI :802.11b/g/n(20M): 11CH</p> <p>Bluetooth: 79CH</p> <p>BLE: 40CH</p> <p>GPS: 1CH</p>
Port:	Data and charging Port
Trade Name :	Anda Watch
FCC ID:	2ALJB-W010R1
Date EUT received:	January 12, 2017
Test Date(s):	January 13 to February 05, 2017

5. Test Summary

The product was tested in accordance with the following specifications.

All testing has been performed according to below product classification:

FCC Rules	Description of Test	Result
§15.107; ANSI C63.4: 2014	AC Power Line Conducted Emissions	Compliance
§15.109; ANSI C63.4: 2014	Radiated Emissions	Compliance

Measurement Uncertainty


Emissions		
Test Item	Description	Uncertainty
AC Power Line Conducted Emissions and Radiated Emissions	Confidence level of approximately 95% (in the case where distributions are normal), with a coverage factor of 2 (for EUTs < 0.5m X 0.5m X 0.5m)	+5.6dB/-4.5dB
-	-	-

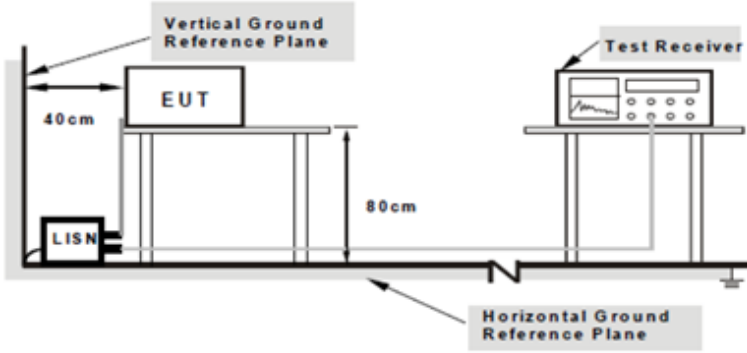
6. Measurements, Examination And Derived Results

6.1 AC Power Line Conducted Emissions

Temperature	22 °C
Relative Humidity	55%
Atmospheric Pressure	1013mbar
Test date :	January 13, 2017
Tested By :	Loren Luo

Requirement(s):

Spec	Item	Requirement	Applicable														
47CFR§15.107	a)	For Low-power radio-frequency devices that is designed to be connected to the public utility (AC) power line, the radio frequency voltage that is conducted back onto the AC power line on any frequency or frequencies, within the band 150 kHz to 30 MHz, shall not exceed the limits in the following table, as measured using a 50 [mu] H/50 ohms line impedance stabilization network (LISN). The lower limit applies at the boundary between the frequencies ranges.															
		<table><tr><th rowspan="2">Frequency ranges (MHz)</th><th colspan="2">Limit (dBµV)</th></tr><tr><th>QP</th><th>Average</th></tr><tr><td>0.15 ~ 0.5</td><td>66 – 56</td><td>56 – 46</td></tr><tr><td>0.5 ~ 5</td><td>56</td><td>46</td></tr><tr><td>5 ~ 30</td><td>60</td><td>50</td></tr></table>	Frequency ranges (MHz)	Limit (dBµV)		QP	Average	0.15 ~ 0.5	66 – 56	56 – 46	0.5 ~ 5	56	46	5 ~ 30	60	50	
Frequency ranges (MHz)	Limit (dBµV)																
	QP	Average															
0.15 ~ 0.5	66 – 56	56 – 46															
0.5 ~ 5	56	46															
5 ~ 30	60	50															

Test Setup	 <p>Note: 1.Support units were connected to second LISN. 2.Both of LISNs (AMN) are 80cm from EUT and at least 80cm from other units and other metal planes support units.</p>
------------	---

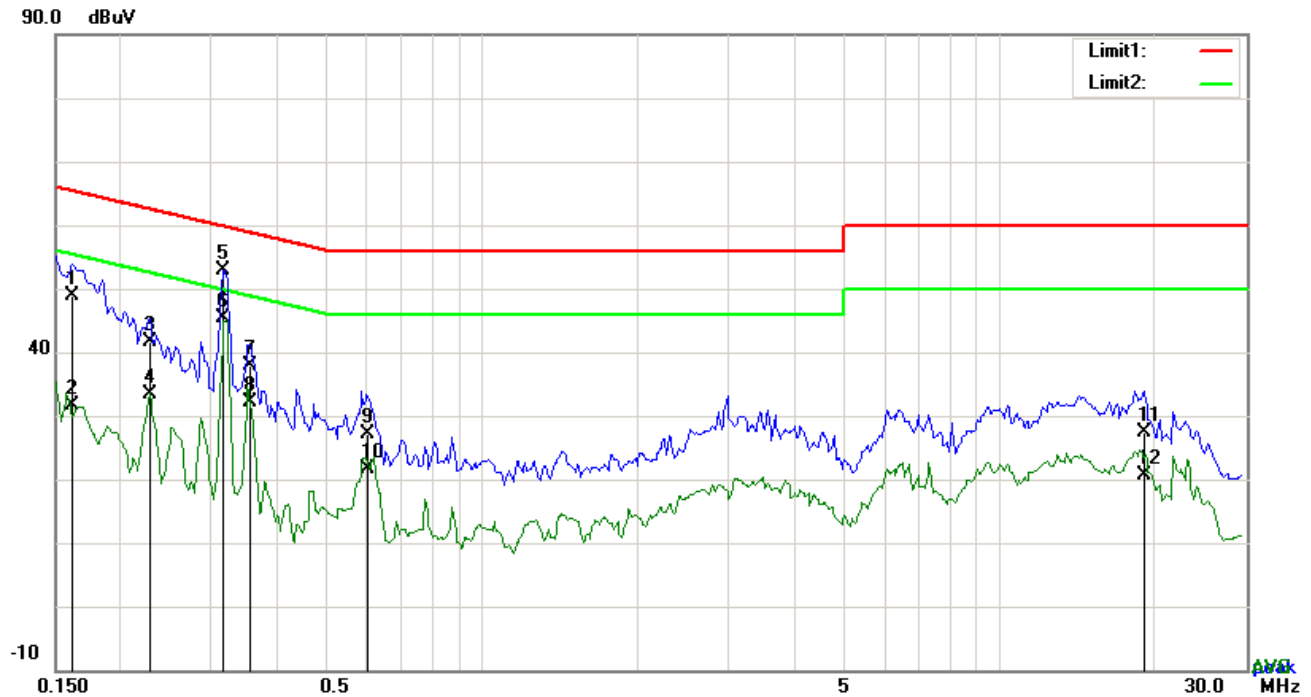
Procedure	<ol style="list-style-type: none"> The EUT and supporting equipment were set up in accordance with the requirements of the standard on top of a 1.5m x 1m x 0.8m high, non-metallic table. The power supply for the EUT was fed through a 50Ω /50mH EUT LISN, connected to filtered mains.
-----------	--

	<p>3. The RF OUT of the EUT LISN was connected to the EMI test receiver via a low-loss coaxial cable.</p> <p>4. All other supporting equipment were powered separately from another main supply.</p> <p>5. The EUT was switched on and allowed to warm up to its normal operating condition.</p> <p>6. A scan was made on the NEUTRAL line (for AC mains) or Earth line (for DC power) over the required frequency range using an EMI test receiver.</p> <p>7. High peaks, relative to the limit line, The EMI test receiver was then tuned to the selected frequencies and the necessary measurements made with a receiver bandwidth setting of 10 kHz.</p> <p>8. Step 7 was then repeated for the LIVE line (for AC mains) or DC line (for DC power).</p>
Remark	
Result	<input checked="" type="checkbox"/> Pass <input type="checkbox"/> Fail

Test Data ☒ Yes ☐ N/A

Test Plot ☒ Yes (See below) ☐ N/A

Test Mode : USB Mode

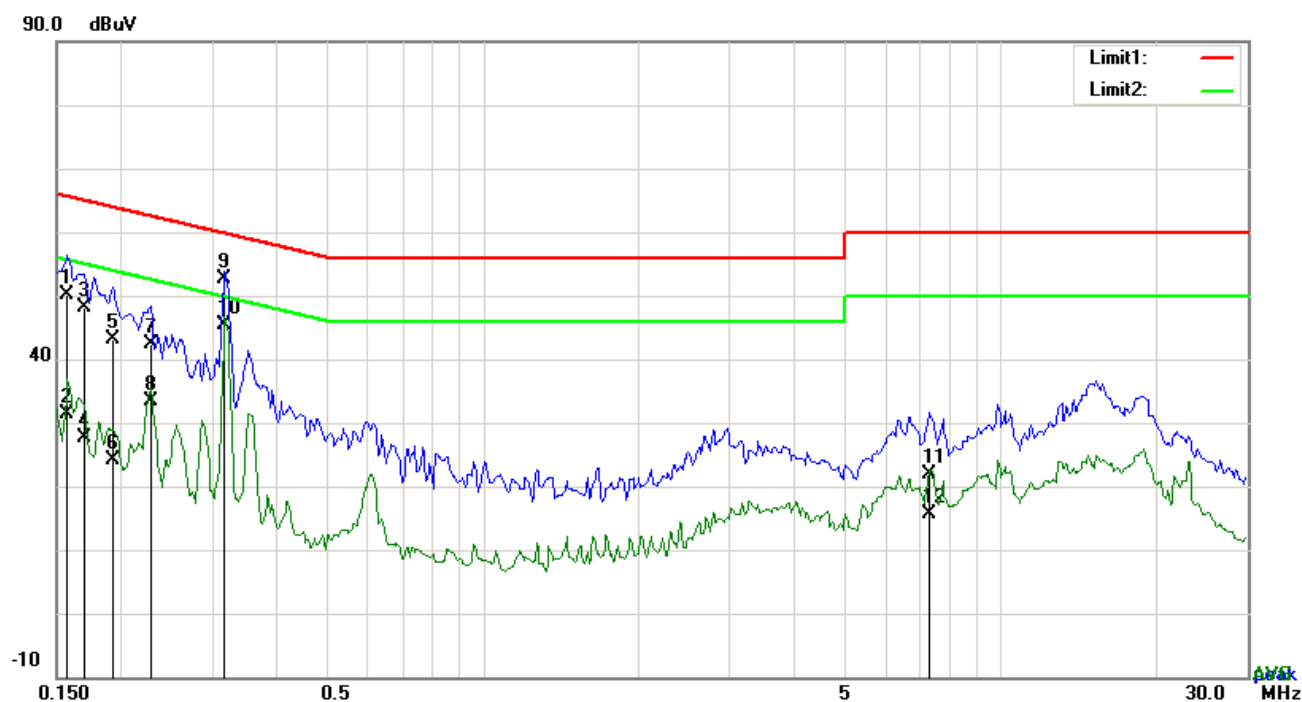


Test Data

Phase Line Plot at 120Vac, 60Hz

No.	P/L	Frequency	Reading	Detector	Corrected	Result	Limit	Margin
		(MHz)	(dBuV)		(dB)	(dBuV)	(dBuV)	(dB)
1	L1	0.1617	38.80	QP	10.03	48.83	65.38	-16.55
2	L1	0.1617	21.56	AVG	10.03	31.59	55.38	-23.79
3	L1	0.2280	31.54	QP	10.03	41.57	62.52	-20.95
4	L1	0.2280	23.43	AVG	10.03	33.46	52.52	-19.06
5	L1	0.3177	42.81	QP	10.03	52.84	59.77	-6.93
6	L1	0.3177	35.37	AVG	10.03	45.40	49.77	-4.37
7	L1	0.3567	27.86	QP	10.03	37.89	58.80	-20.91
8	L1	0.3567	22.01	AVG	10.03	32.04	48.80	-16.76
9	L1	0.6011	17.21	QP	10.03	27.24	56.00	-28.76
10	L1	0.6011	11.53	AVG	10.03	21.56	46.00	-24.44
11	L1	19.0368	17.17	QP	10.29	27.46	60.00	-32.54
12	L1	19.0368	10.40	AVG	10.29	20.69	50.00	-29.31

Test Mode : USB Mode

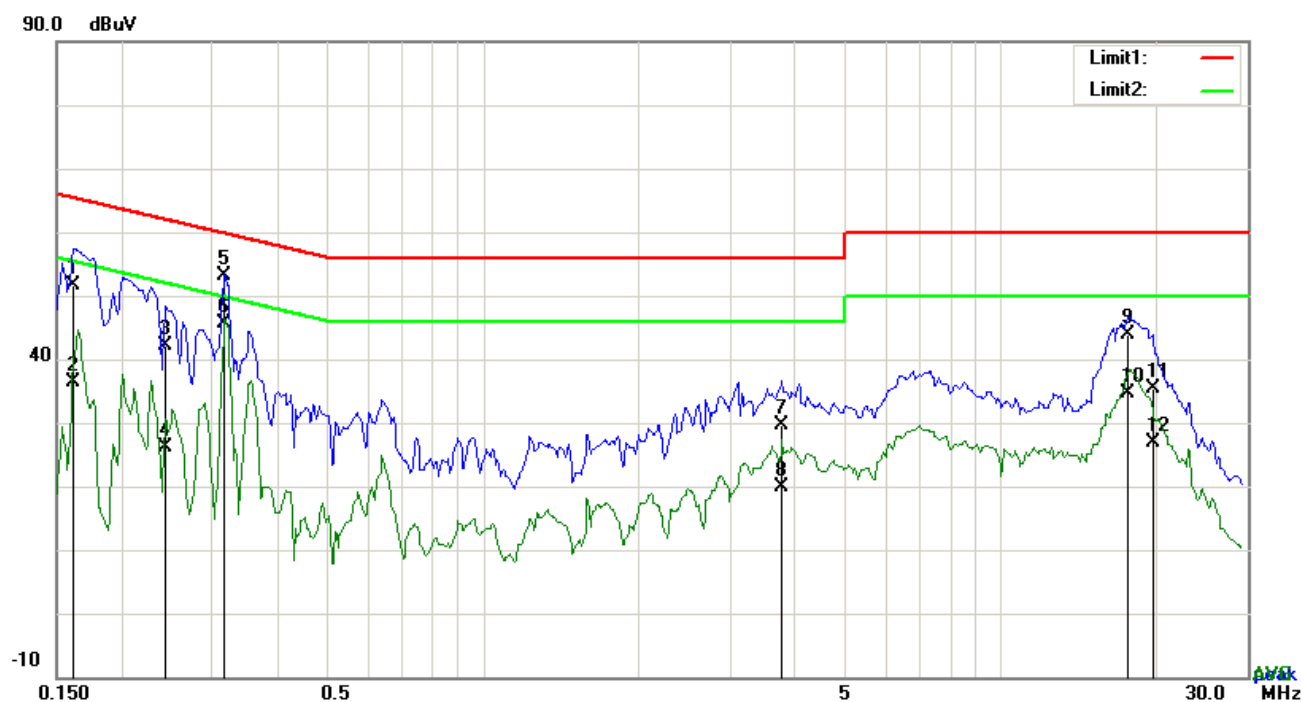


Test Data

Phase Neutral Plot at 120Vac, 60Hz

No.	P/L	Frequency	Reading	Detector	Corrected	Result	Limit	Margin
		(MHz)	(dBuV)		(dB)	(dBuV)	(dBuV)	(dB)
1	N	0.1578	40.22	QP	10.02	50.24	65.58	-15.34
2	N	0.1578	21.32	AVG	10.02	31.34	55.58	-24.24
3	N	0.1695	38.10	QP	10.02	48.12	64.98	-16.86
4	N	0.1695	17.52	AVG	10.02	27.54	54.98	-27.44
5	N	0.1929	33.19	QP	10.02	43.21	63.91	-20.70
6	N	0.1929	14.17	AVG	10.02	24.19	53.91	-29.72
7	N	0.2280	32.25	QP	10.02	42.27	62.52	-20.25
8	N	0.2280	23.44	AVG	10.02	33.46	52.52	-19.06
9	N	0.3177	42.70	QP	10.02	52.72	59.77	-7.05
10	N	0.3177	35.31	AVG	10.02	45.33	49.77	-4.44
11	N	7.2744	11.81	QP	10.10	21.91	60.00	-38.09
12	N	7.2744	5.53	AVG	10.10	15.63	50.00	-34.37

Test Mode : USB Mode

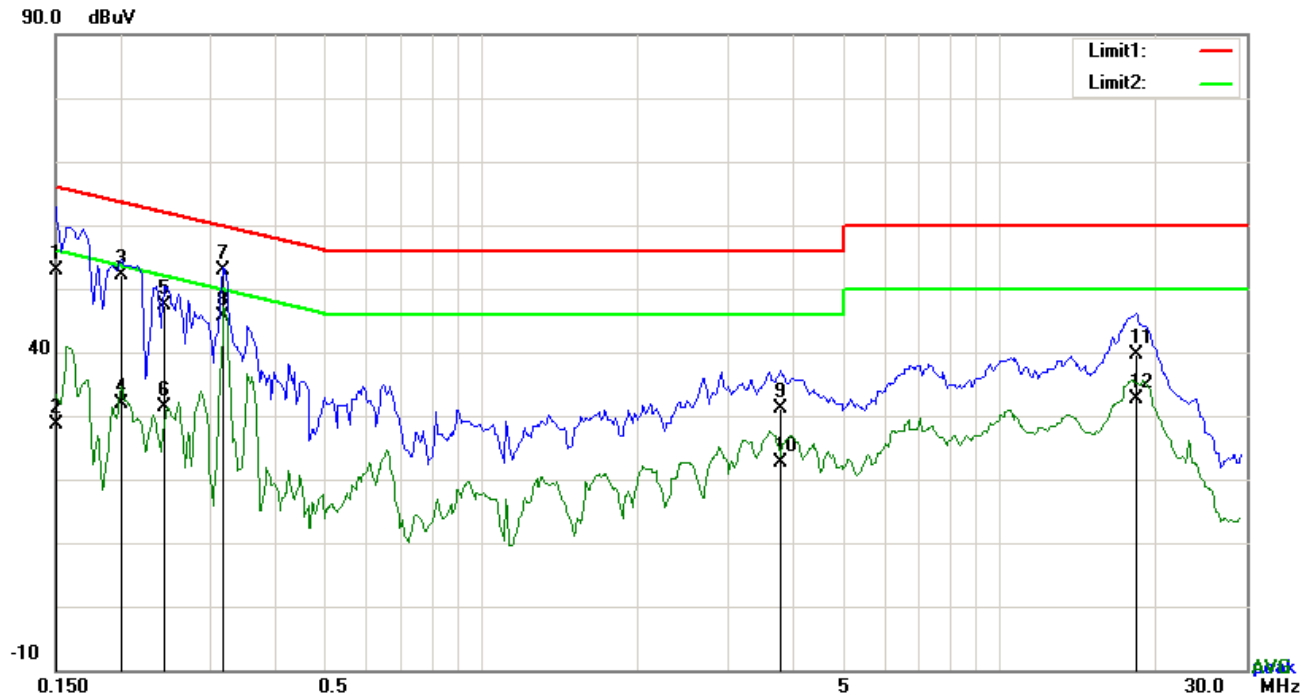


Test Data

Phase Line Plot at 240Vac, 60Hz

No.	P/L	Frequency	Reading	Detector	Corrected	Result	Limit	Margin
		(MHz)	(dBuV)		(dB)	(dBuV)	(dBuV)	(dB)
1	L1	0.1617	41.50	QP	10.03	51.53	65.38	-13.85
2	L1	0.1617	26.38	AVG	10.03	36.41	55.38	-18.97
3	L1	0.2436	32.09	QP	10.03	42.12	61.97	-19.85
4	L1	0.2436	16.13	AVG	10.03	26.16	51.97	-25.81
5	L1	0.3177	43.02	QP	10.03	53.05	59.77	-6.72
6	L1	0.3177	35.68	AVG	10.03	45.71	49.77	-4.06
7	L1	3.7800	19.53	QP	10.06	29.59	56.00	-26.41
8	L1	3.7800	9.80	AVG	10.06	19.86	46.00	-26.14
9	L1	17.6094	33.55	QP	10.26	43.81	60.00	-16.19
10	L1	17.6094	24.47	AVG	10.26	34.73	50.00	-15.27
11	L1	19.6881	25.15	QP	10.30	35.45	60.00	-24.55
12	L1	19.6881	16.63	AVG	10.30	26.93	50.00	-23.07

Test Mode : USB Mode



Test Data


Phase Neutral Plot at 240Vac, 60Hz

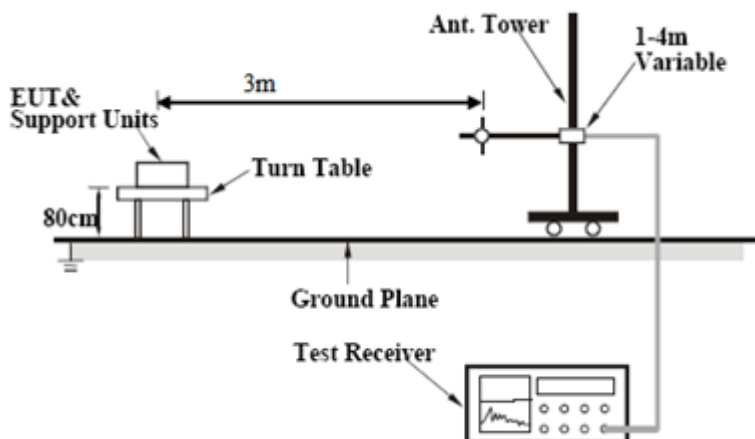
No.	P/L	Frequency	Reading	Detector	Corrected	Result	Limit	Margin
		(MHz)	(dBuV)		(dB)	(dBuV)	(dBuV)	(dB)
1	N	0.1500	42.78	QP	10.02	52.80	66.00	-13.20
2	N	0.1500	18.69	AVG	10.02	28.71	56.00	-27.29
3	N	0.2007	42.12	QP	10.02	52.14	63.58	-11.44
4	N	0.2007	21.76	AVG	10.02	31.78	53.58	-21.80
5	N	0.2436	37.46	QP	10.02	47.48	61.97	-14.49
6	N	0.2436	21.35	AVG	10.02	31.37	51.97	-20.60
7	N	0.3177	42.92	QP	10.02	52.94	59.77	-6.83
8	N	0.3177	35.61	AVG	10.02	45.63	49.77	-4.14
9	N	3.7800	21.14	QP	10.06	31.20	56.00	-24.80
10	N	3.7800	12.60	AVG	10.06	22.66	46.00	-23.34
11	N	18.3855	29.32	QP	10.24	39.56	60.00	-20.44
12	N	18.3855	22.37	AVG	10.24	32.61	50.00	-17.39

6.2 Radiated Emissions

Temperature	22 °C
Relative Humidity	55%
Atmospheric Pressure	1013mbar
Test date :	January 13, 2017
Tested By :	Loren Luo

Requirement(s):

Spec	Item	Requirement	Applicable	
47CFR§15.109(d)	a)	Except higher limit as specified elsewhere in other section, the emissions from the low-power radio-frequency devices shall not exceed the field strength levels specified in the following table and the level of any unwanted emissions shall not exceed the level of the fundamental emission. The tighter limit applies at the band edges		
		Frequency range (MHz)		Field Strength (µV/m)
		30 – 88		100
		88 – 216		150
		216 960		200
		Above 960		500

Test Setup	
------------	--

Procedure	<ol style="list-style-type: none"> The EUT was switched on and allowed to warm up to its normal operating condition. The test was carried out at the selected frequency points obtained from the EUT characterization. Maximization of the emissions, was carried out by rotating the EUT, changing the antenna polarization, and adjusting the antenna height in the following manner: <ol style="list-style-type: none"> Vertical or horizontal polarization (whichever gave the higher emission level
-----------	--

	<p>over a full rotation of the EUT) was chosen.</p> <p>b. The EUT was then rotated to the direction that gave the maximum emission.</p> <p>c. Finally, the antenna height was adjusted to the height that gave the maximum emission.</p> <p>3. The resolution bandwidth and video bandwidth of test receiver/spectrum analyzer is 120 kHz for Quasi Peak detection at frequency below 1GHz.</p> <p>4. The resolution bandwidth of test receiver/spectrum analyzer is 1MHz and video bandwidth is 3MHz with Peak detection for Peak measurement at frequency above 1GHz.</p> <p>The resolution bandwidth of test receiver/spectrum analyzer is 1MHz and the video bandwidth with Peak detection for Average Measurement as below at frequency above 1GHz.</p> <p>■ 1 kHz (Duty cycle < 98%) □ 10 Hz (Duty cycle > 98%)</p> <p>5. Steps 2 and 3 were repeated for the next frequency point, until all selected frequency points were measured.</p>
Remark	
Result	<input checked="" type="checkbox"/> Pass <input type="checkbox"/> Fail

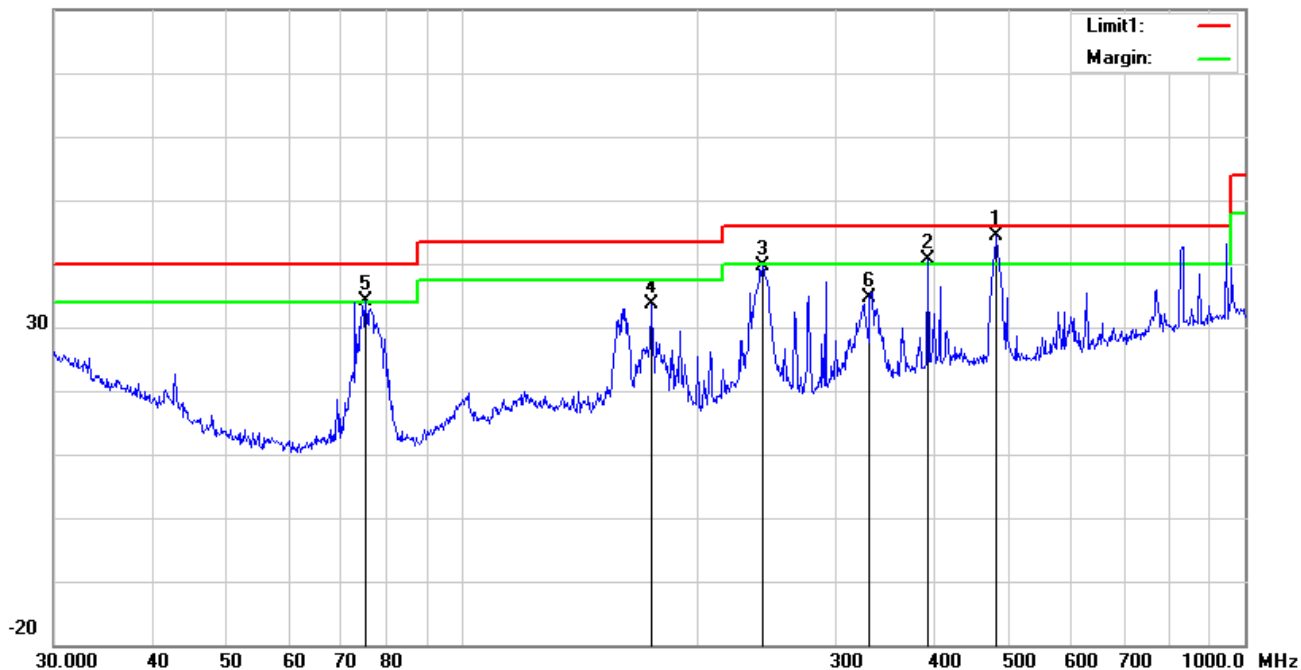
Test Data ☒ Yes ☐ N/A

Test Plot ☒ Yes (See below) ☐ N/A

Test Mode : USB Mode

Below 1GHz

80.0 dBuV/m

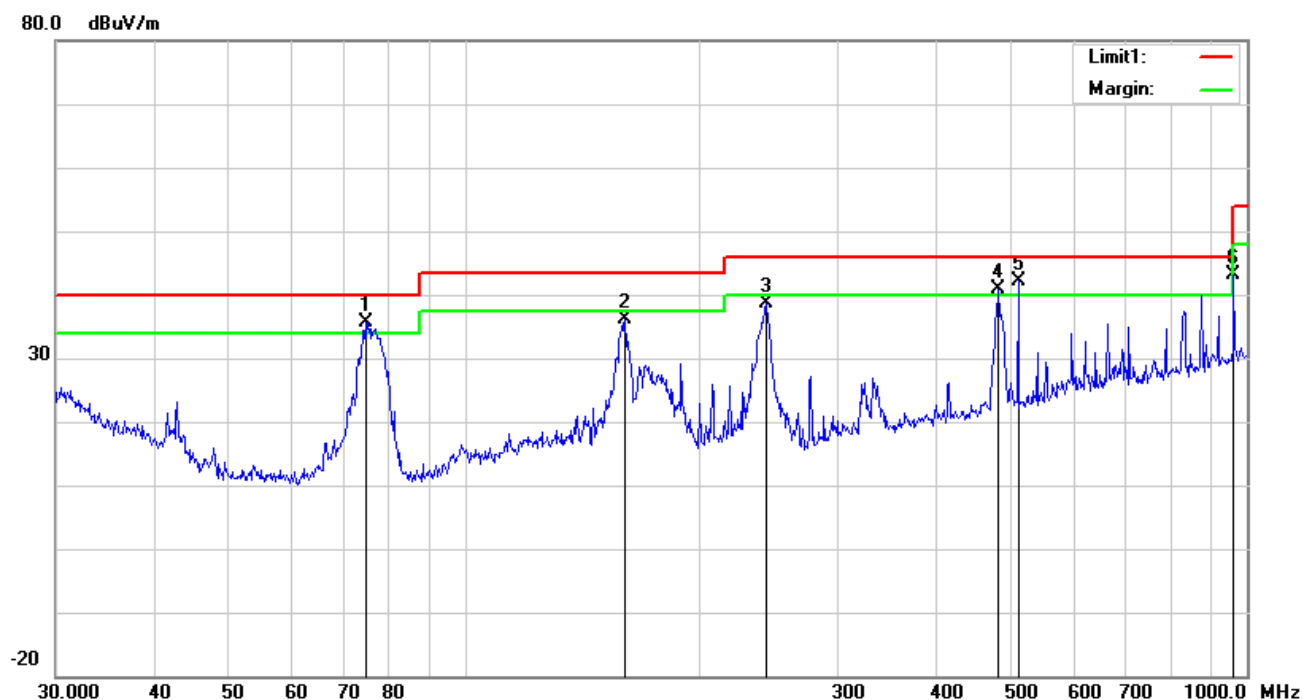


Test Data

Horizontal Polarity Plot @3m

No.	P/L	Frequency	Reading	Detector	Ant_F	PA_G	Cab_L	Result	Limit	Margin	Height	Degree
		(MHz)	(dBuV/m)		(dB/m)	(dB)	(dB)	(dBuV/m)	(dBuV/m)	(dB)	(cm)	(°)
1	H	480.5276	46.60	QP	17.31	21.85	2.31	44.37	46.00	-1.63	200	226
2	H	393.4724	44.98	peak	15.56	22.03	2.01	40.52	46.00	-5.48	100	57
3	H	241.6763	48.72	peak	11.52	22.30	1.67	39.61	46.00	-6.39	300	178
4	H	174.4241	43.07	peak	11.45	22.26	1.36	33.62	43.50	-9.88	100	62
5	H	75.1823	47.89	peak	7.70	22.40	0.96	34.15	40.00	-5.85	100	343
6	H	331.3547	40.59	peak	14.26	22.20	1.95	34.60	46.00	-11.40	100	186

Below 1GHz



Test Data

Vertical Polarity Plot @3m

No.	P/L	Frequency	Reading	Detector	Ant_F	PA_G	Cab_L	Result	Limit	Margin	Height	Degree
		(MHz)	(dBuV/m)		(dB/m)	(dB)	(dB)	(dBuV/m)	(dBuV/m)	(dB)	(cm)	()
1	V	74.6569	49.27	QP	7.71	22.40	0.96	35.54	40.00	-4.46	300	297
2	V	160.3457	44.55	peak	12.57	22.27	1.39	36.24	43.50	-7.26	200	78
3	V	242.5253	47.71	peak	11.50	22.30	1.68	38.59	46.00	-7.41	300	249
4	V	480.5276	43.08	QP	17.31	21.85	2.31	40.85	46.00	-5.15	200	105
5	V	510.0436	43.53	QP	17.84	21.79	2.43	42.01	46.00	-3.99	200	123
6	V	962.1623	37.90	peak	22.81	20.76	3.24	43.19	54.00	-10.81	300	137

Above 1GHz

Frequency (MHz)	Amplitude (dBμV/m)	Azimuth	Height (cm)	Polarity (H/V)	Factors (dB)	Limit (dBμV/m)	Margin (dB)	Detector (PK/AV)
1176.3	50.18	78	100	V	-20.64	74	-23.82	PK
1765.2	54.36	49	200	V	-21.38	74	-19.64	PK
2049.8	52.97	267	300	V	-19.87	74	-21.03	PK
1659.2	51.27	34	100	H	-20.13	74	-22.73	PK
2287.5	55.62	128	100	H	-20.94	74	-18.38	PK
1928.3	51.38	157	200	H	-20.17	74	-22.62	PK

Note1: The highest frequency of the EUT is 2480 MHz, so the testing has been conformed to $5 \times 2480 \text{ MHz} = 12,400 \text{ MHz}$.

Note2: The frequency that above 3GHz is mainly from the environment noise.

Note3: The AV measurement performed, more than 20dB below limit so AV test data was not presented.

Annex A. TEST INSTRUMENT

Instrument	Model	Serial #	Cal Date	Cal Due	In use
AC Line Conducted Emissions					
EMI test receiver	ESCS30	8471241027	09/16/2016	09/15/2017	<input checked="" type="checkbox"/>
Line Impedance Stabilization Network	LI-125A	191106	09/24/2016	09/23/2017	<input checked="" type="checkbox"/>
Line Impedance Stabilization Network	LI-125A	191107	09/24/2016	09/23/2017	<input checked="" type="checkbox"/>
LISN	ISN T800	34373	09/24/2016	09/23/2017	<input checked="" type="checkbox"/>
Transient Limiter	LIT-153	531118	08/31/2016	08/30/2017	<input checked="" type="checkbox"/>
Radiated Emissions					
EMI test receiver	ESL6	100262	09/16/2016	09/15/2017	<input checked="" type="checkbox"/>
OPT 010 AMPLIFIER (0.1-1300MHz)	8447E	2727A02430	08/31/2016	08/30/2017	<input checked="" type="checkbox"/>
Microwave Preamplifier (1 ~ 26.5GHz)	8449B	3008A02402	03/24/2016	03/23/2017	<input checked="" type="checkbox"/>
Bilog Antenna (30MHz~6GHz)	JB6	A110712	09/20/2016	09/19/2017	<input checked="" type="checkbox"/>
Double Ridge Horn Antenna	AH-118	71259	09/23/2016	09/22/2017	<input checked="" type="checkbox"/>

Annex B. EUT And Test Setup Photographs

Annex B.i. Photograph: EUT External Photo

Whole Package View



Adapter - Front View



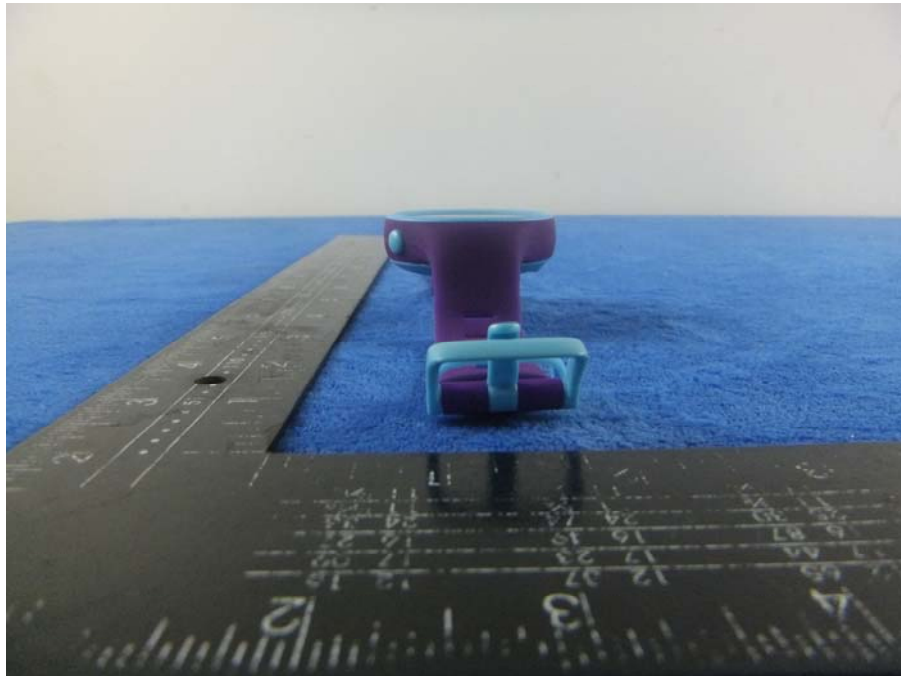
EUT - Front View



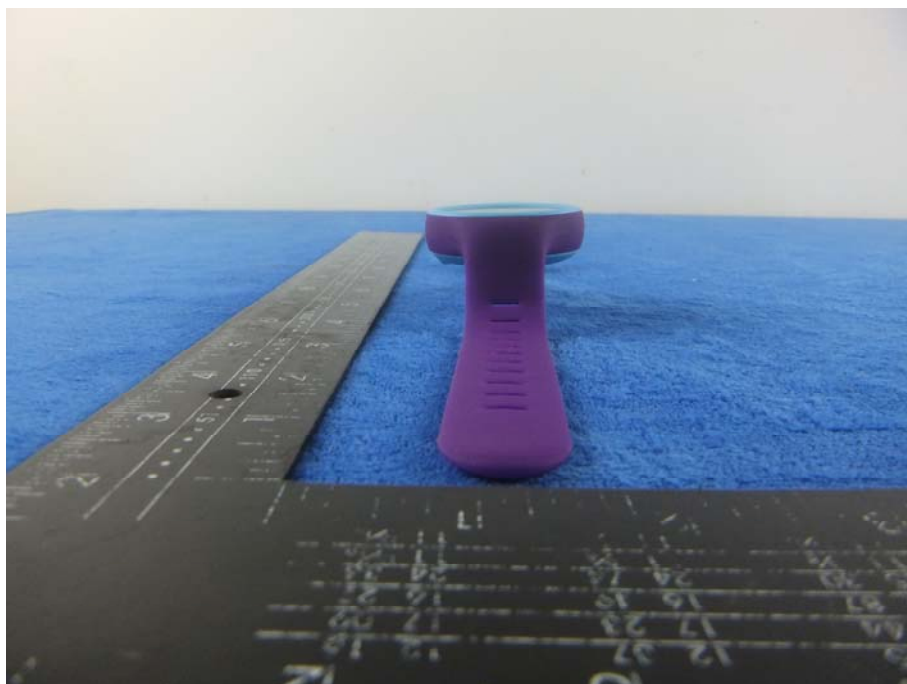
EUT - Rear View



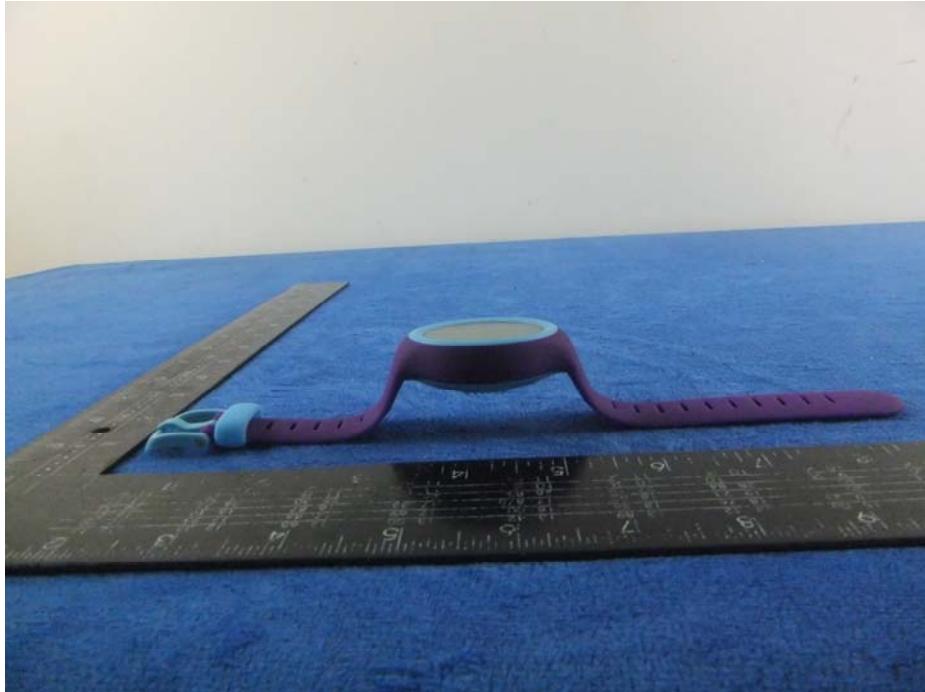
EUT - Top View



EUT - Bottom View



EUT - Left View

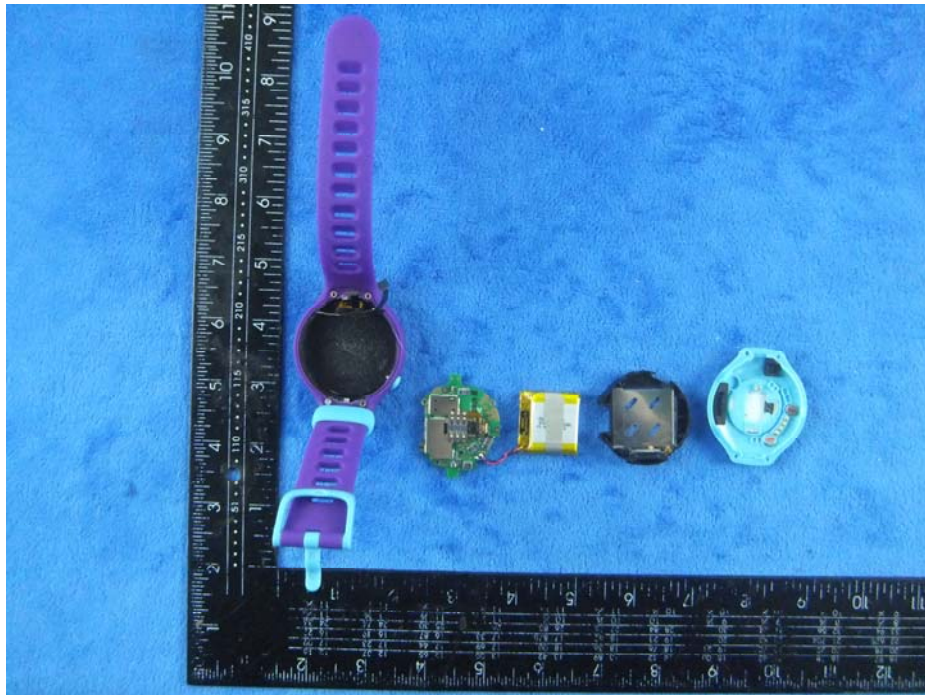


EUT - Right View



Annex B.ii. Photograph: EUT Internal Photo

Cover Off - Top View 1



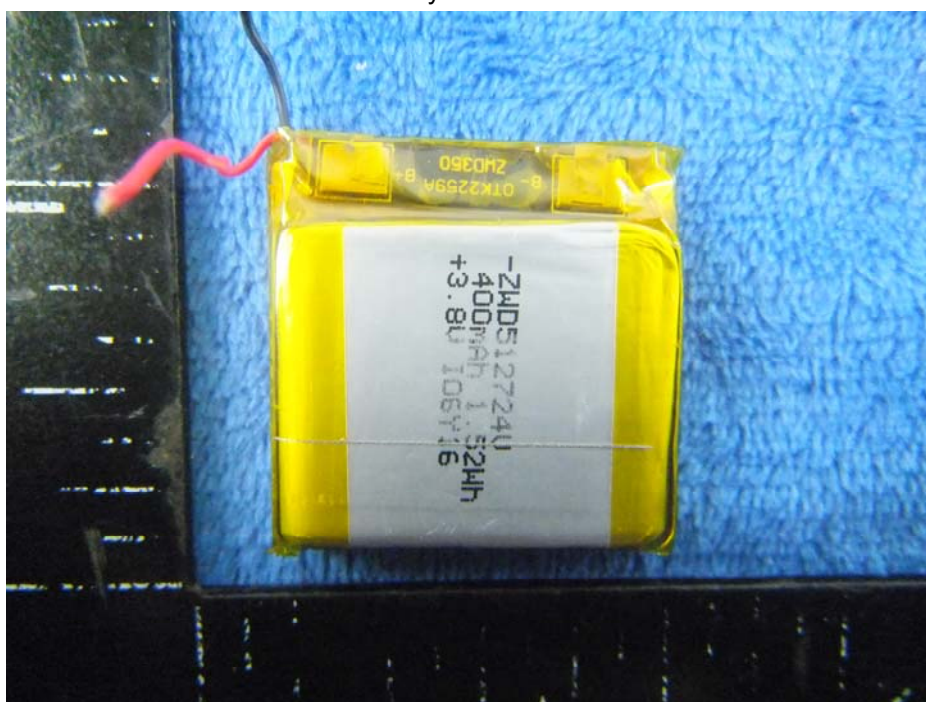
Cover Off - Top View 2



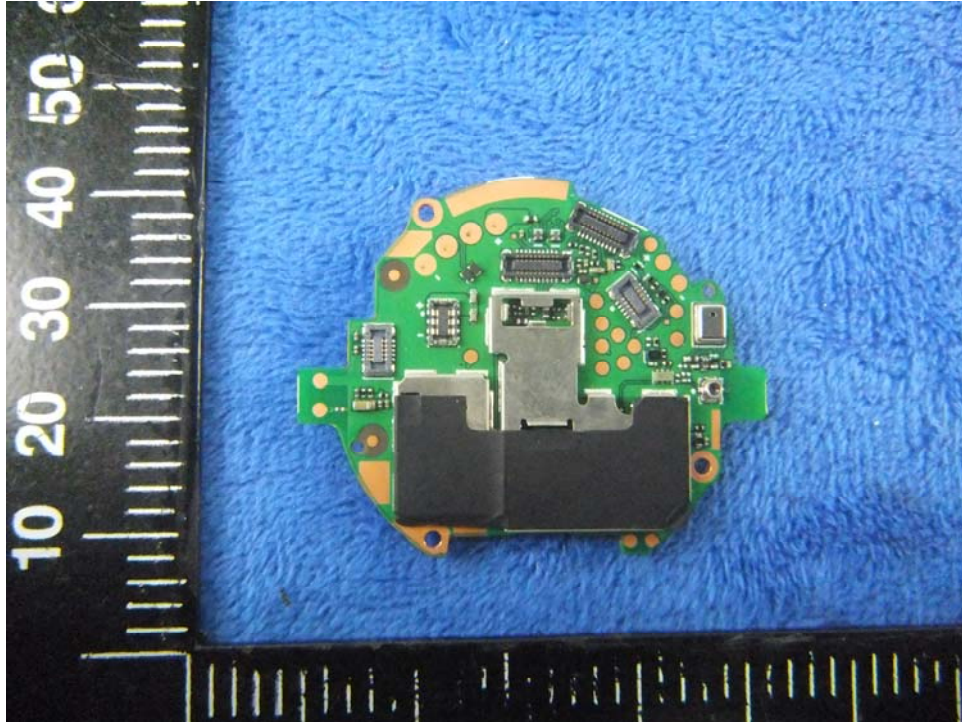
Battery - Front View



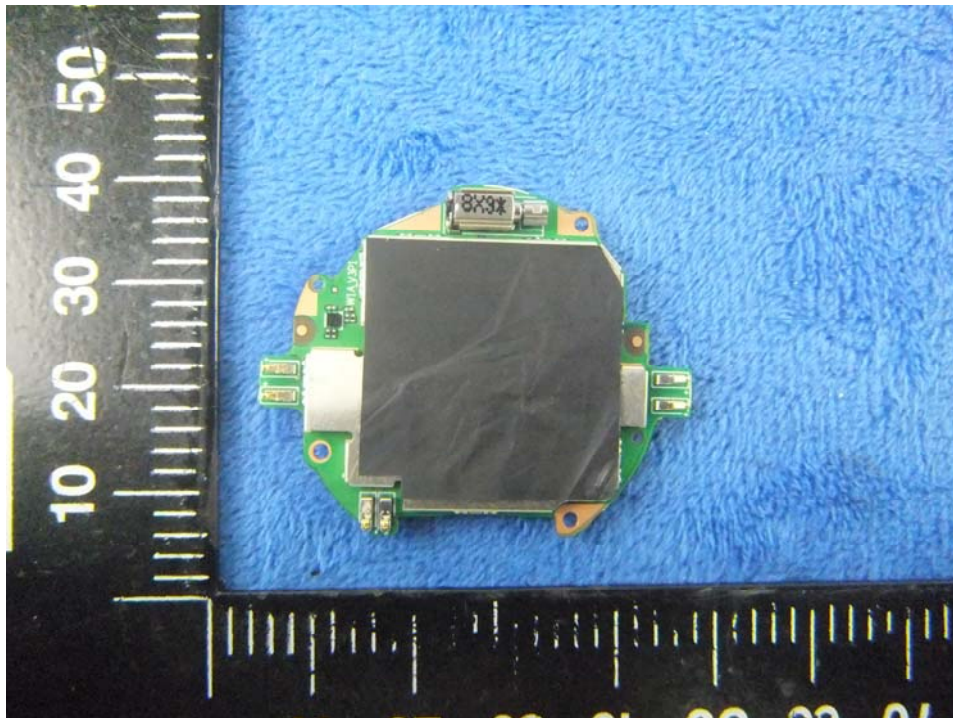
Battery - Rear View



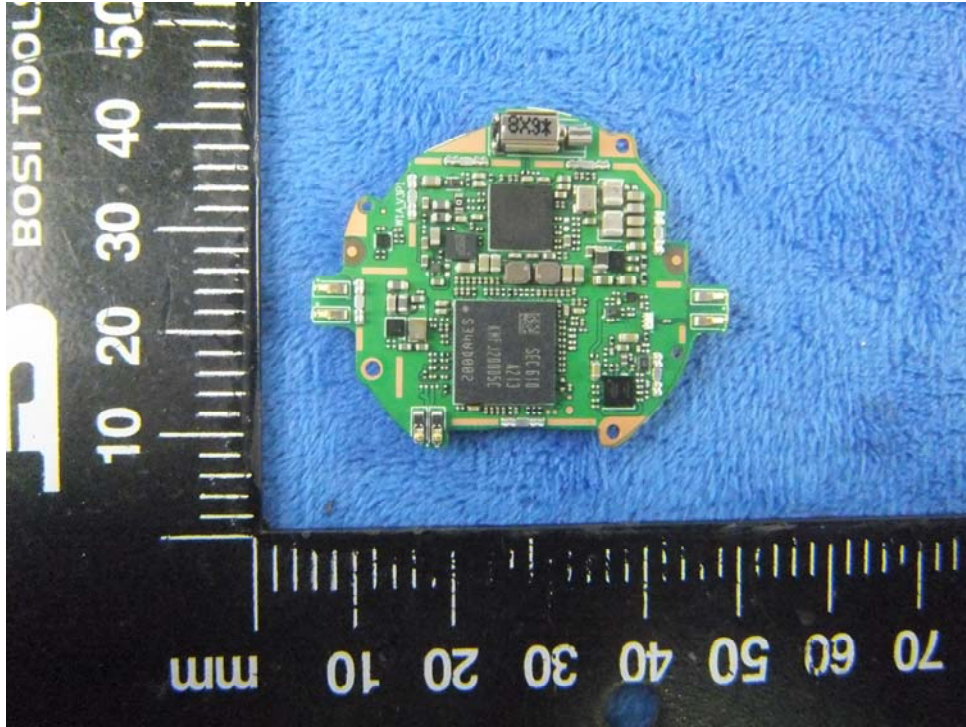
Mainboard with Shielding - Front View



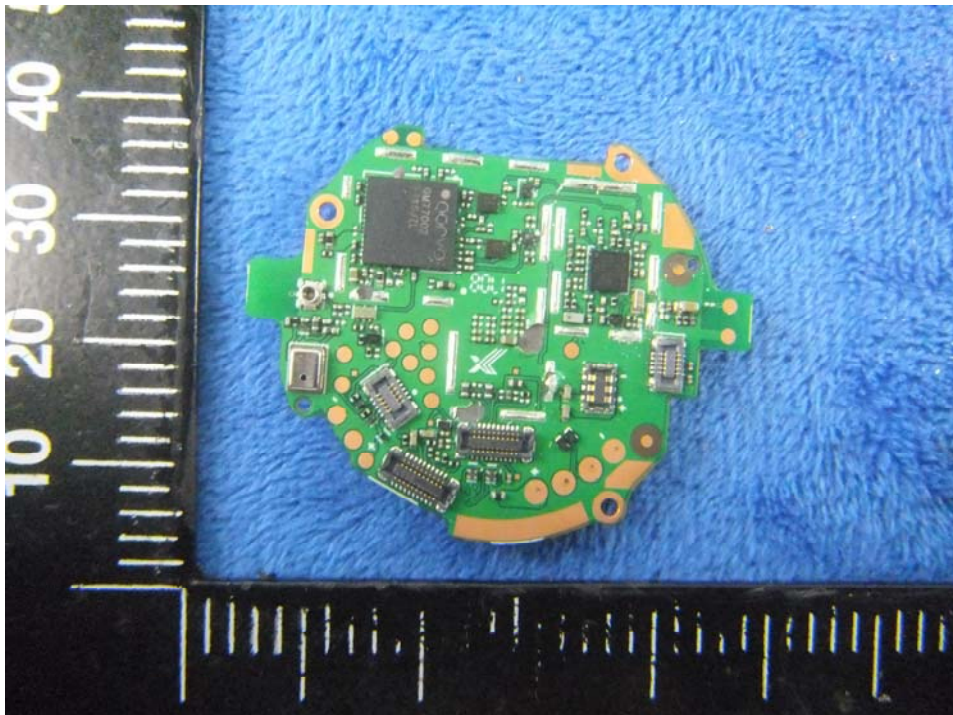
Mainboard without Shielding - Front View



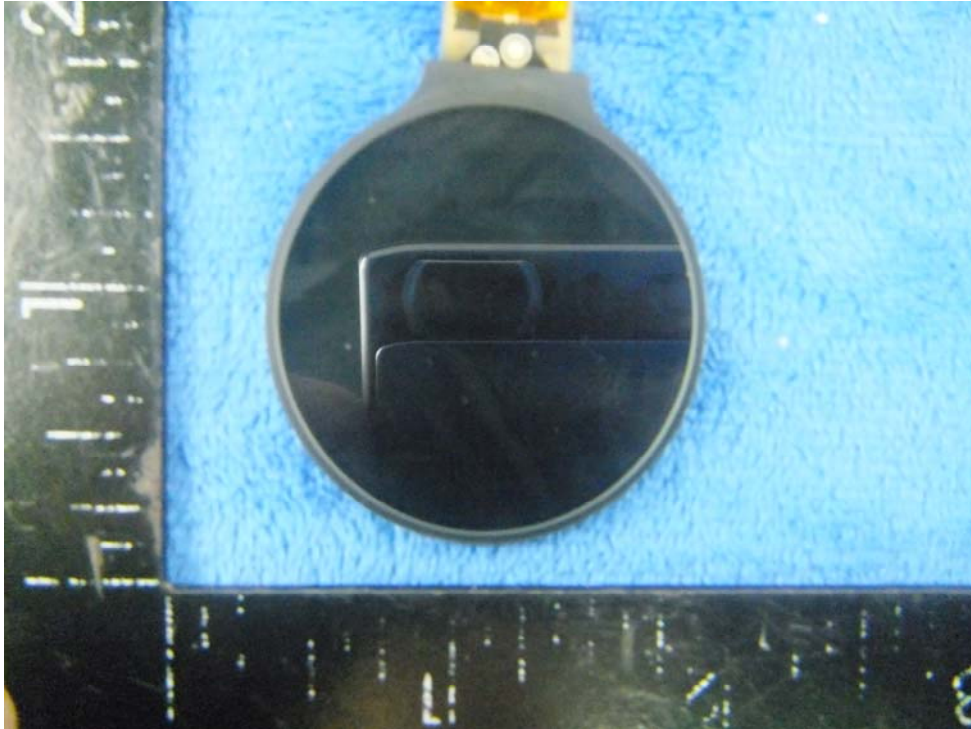
Mainboard with Shielding – Rear View



Mainboard without Shielding - Rear View



LCD – Front View



LCD – Rear View



GSM/PCS/UMTS-FDD Antenna View



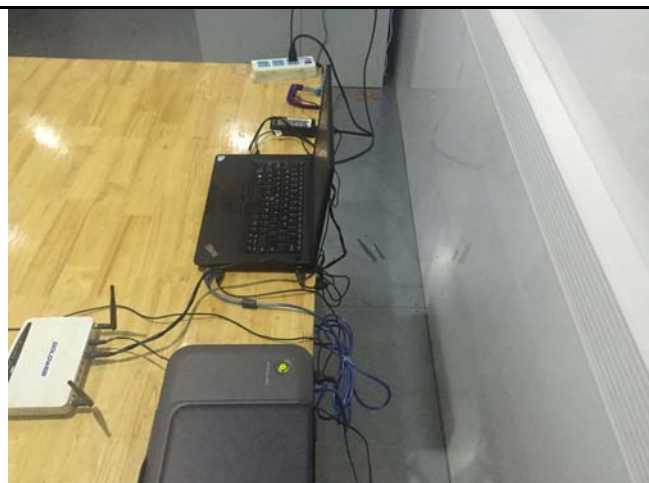
WIFI/BT/BLE/GPS - Antenna View



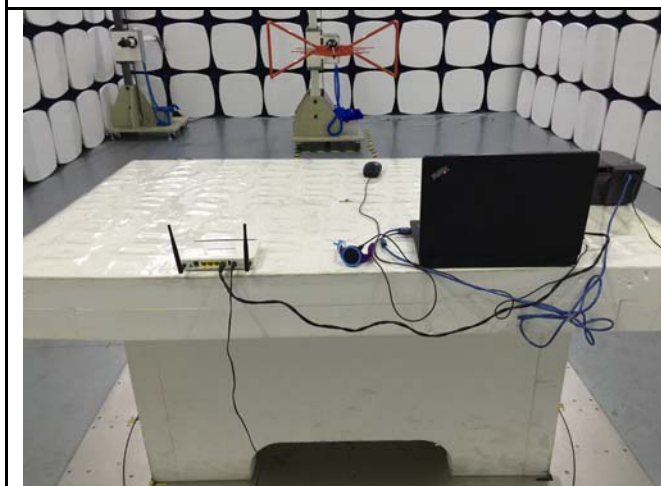
Annex B.iii. Photograph: Test Setup Photo



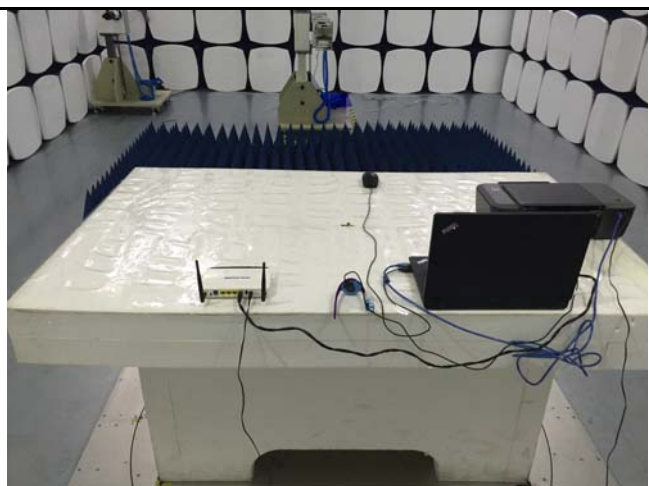
Conducted Emissions Test Setup – Front View



Conducted Emissions Test Setup – Side View



Radiated Emissions Test Setup Below 1GHz

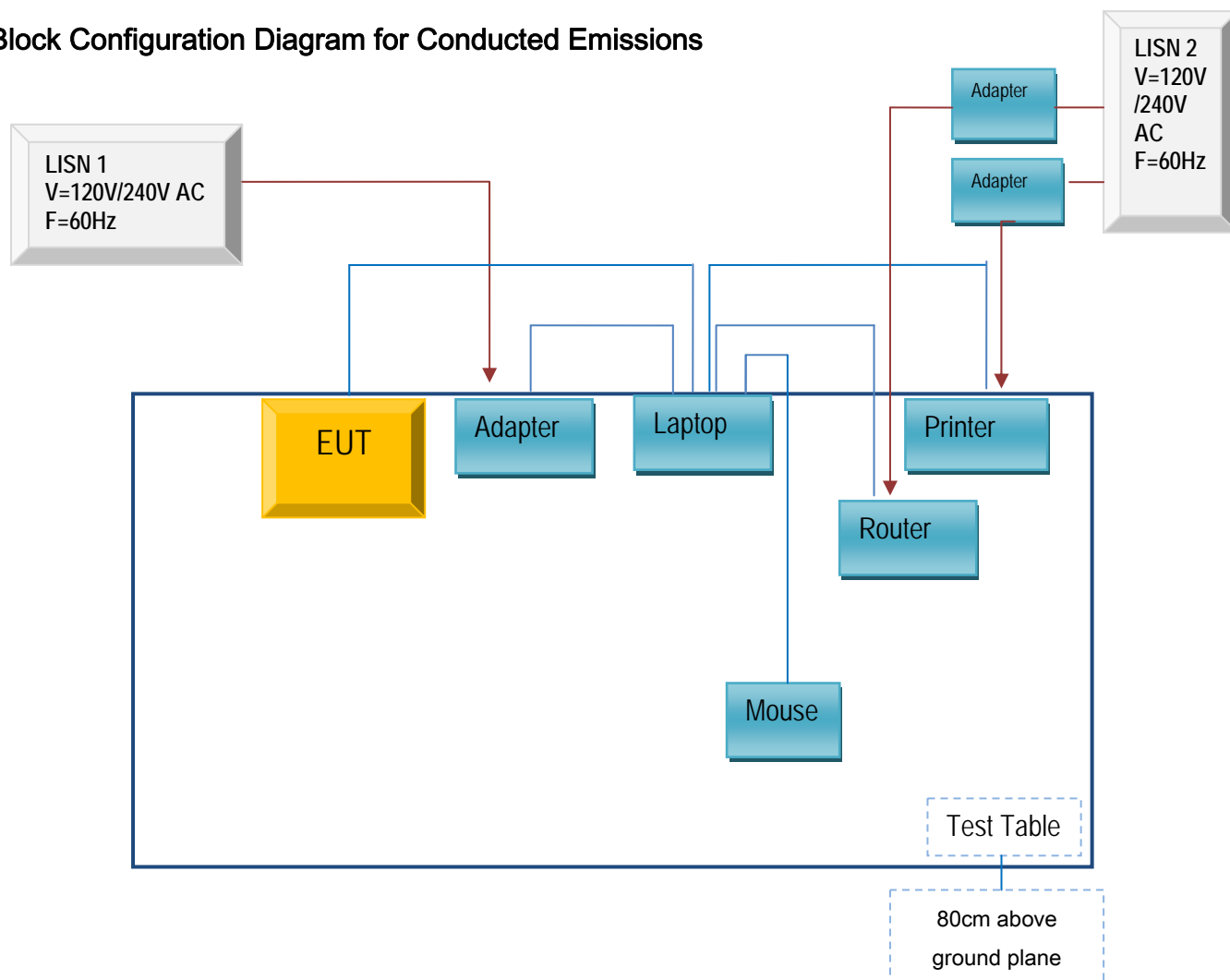


Radiated Emissions Test Setup Above 1GHz

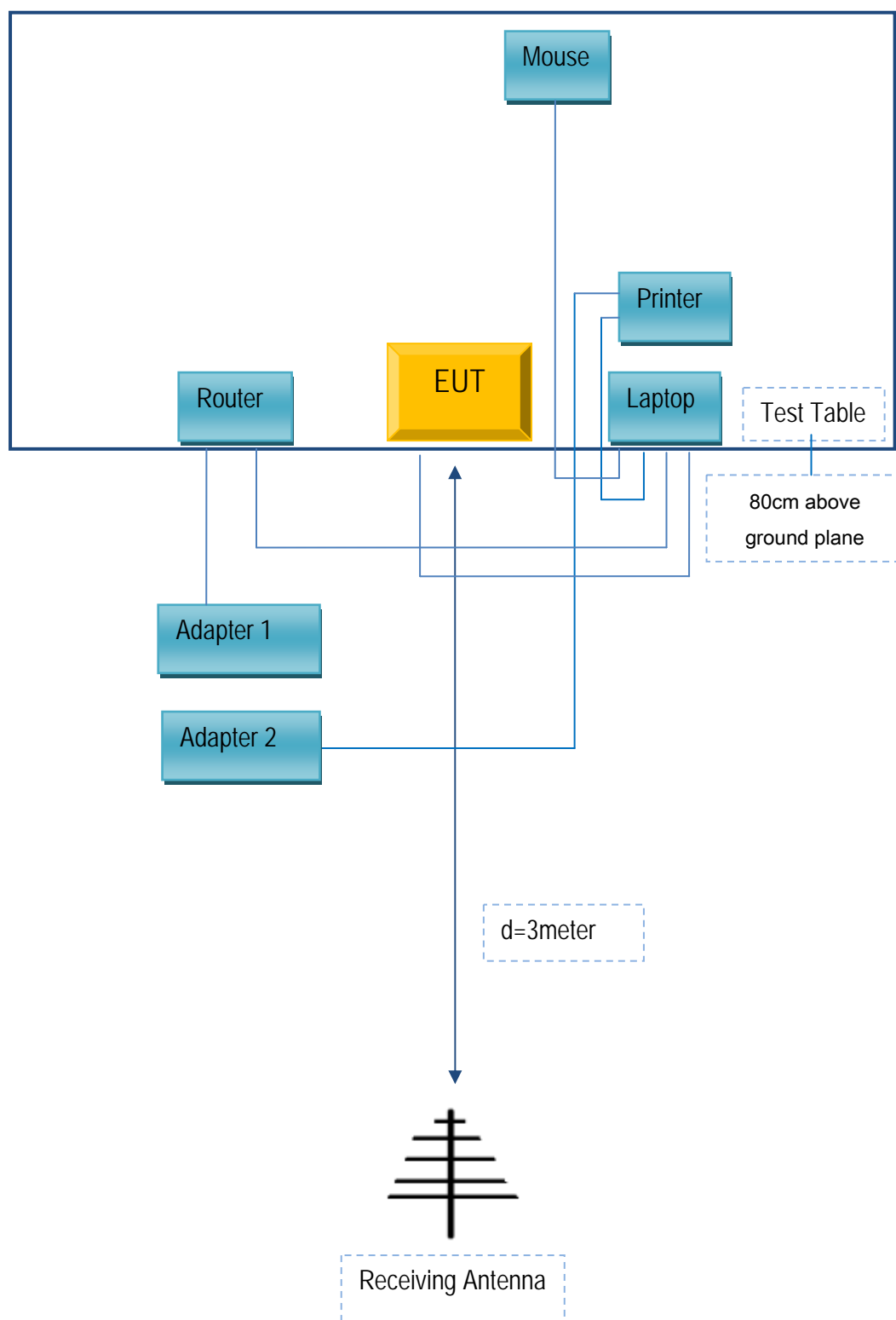
Annex C. TEST SETUP AND SUPPORTING EQUIPMENT

Annex C.ii. TEST SET UP BLOCK

Block Configuration Diagram for Conducted Emissions



Block Configuration Diagram for Radiated Emissions



Annex C. ii. SUPPORTING EQUIPMENT DESCRIPTION

The following is a description of supporting equipment and details of cables used with the EUT.

Supporting Equipment:

Manufacturer	Equipment Description	Model	Serial No
Lenovo	Laptop	E40	LR-1EHRX
GOLDWEB	Router	R102	1202032094
Lenovo	AC Adapter	42T4416	21D9JU
HP	Printer	VCVRA-1003	CN36M19JWX
DELL	Mouse	E100	912NMTUT41481
BULL	Socket	GN-403	GN201203

Supporting Cable:

Cable type	Shield Type	Ferrite Core	Length	Serial No
USB Cable	Un-shielding	No	2m	JX120051274
USB Cable	Un-shielding	No	2m	CBA3000AH0C1
RJ45 Cable	Un-shielding	No	2m	KX156327541
Router Power cable	Un-shielding	No	2m	13274630Z
Printer Power cable	Un-shielding	No	2m	127581031
Power Cable	Un-shielding	No	0.8m	GT211032

Annex D. User Manual / Block Diagram / Schematics / Partlist

Please see the attachment

Annex E. DECLARATION OF SIMILARITY

N/A