

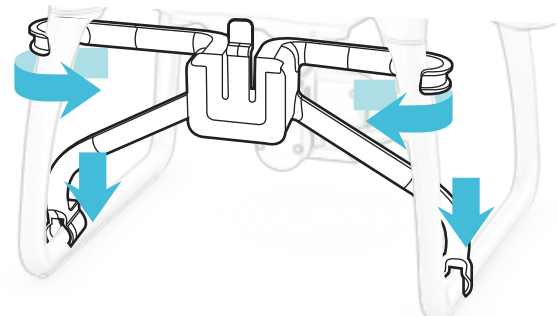
Airdrop Quick Guide Airdrop 簡単ガイド Airdrop 퀵가이드



Attach the bracket

ブラケットを締結する
브라켓 체결하기

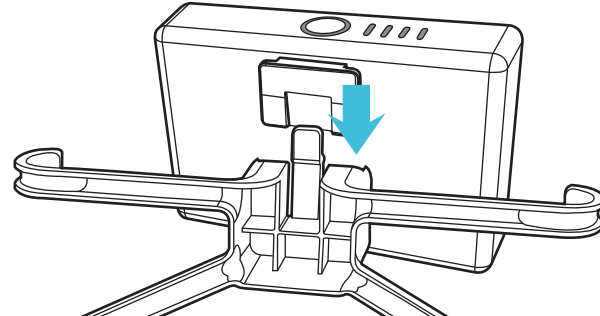
- Attach the bracket to the leg.
ブラケットを脚に装着する
브라켓을 다리에 장착한다.



Attach the product

製品を装着する
제품 장착하기

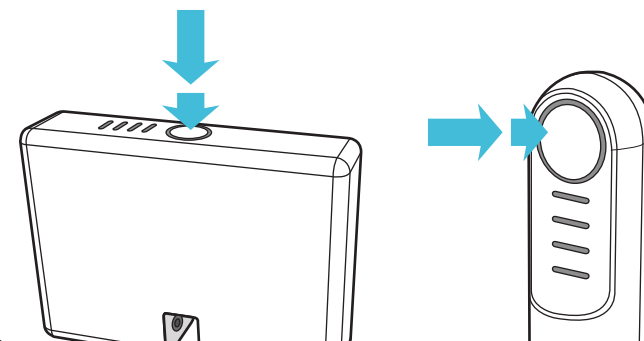
- Combine the bracket's groove and the protruded part of the main product.
ブラケットの溝と製品の突き出し部分を繋ぐ
브라켓의 홈과 제품의 돌출부위를 결합한다.



Turn on/off

電源を点ける/消す
제품 켜기/끄기

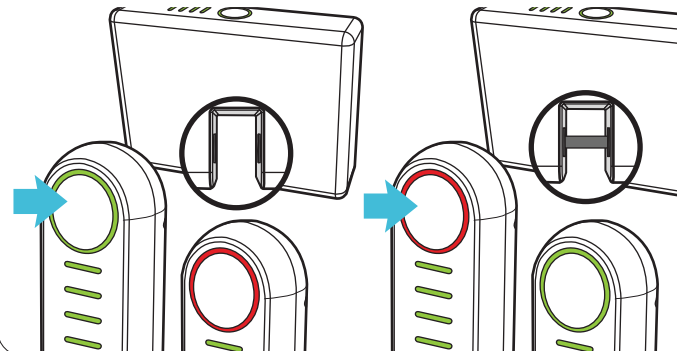
- Double-Click the button and hold it for a while.
ボタンを短く一回押した後、長く押す
버튼을 짧게 누른 후, 길게 누른다.



Operate

作動する
작동하기

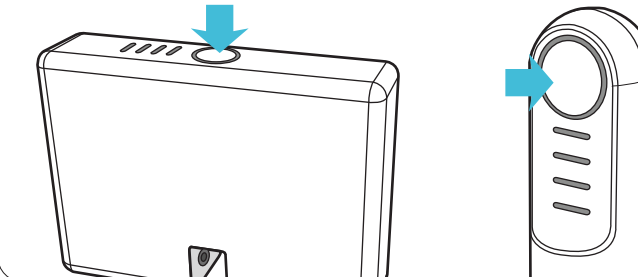
- Short-Press the button when the product is turned off.
リモコンのボタンを短く押す
리모콘의 버튼을 짧게 누른다.



Check remaining battery

バッテリーの残量をチェックする
배터리 잔량체크하기

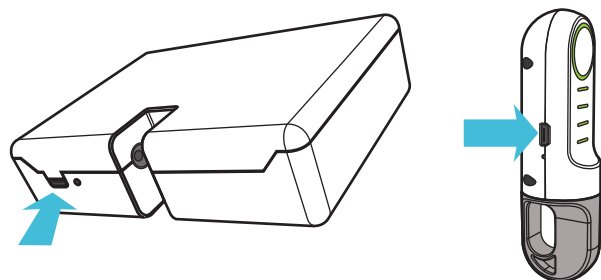
- To check the remaining battery, press the button when the product is turned off.
製品の電源が消えた状態でボタンを短く押してバッテリーの残量をチェックする
제품전원이 꺼진 상태에서 버튼을 짧게 눌러 배터리 잔량을 체크한다.



Charge Battery

バッテリーを充電する
배터리 충전하기

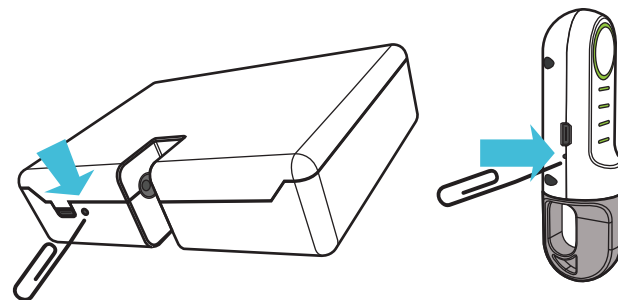
- Connect the charging cable to the charging socket at the bottom(side) of the product.
製品の下段(側面)の充電器の連結ジャックに充電ケーブルを繋ぐ
제품 하단(옆)의 충전기의 연결잭에 충전케이블을 연결한다.



Reset

リセットする
리셋 하기

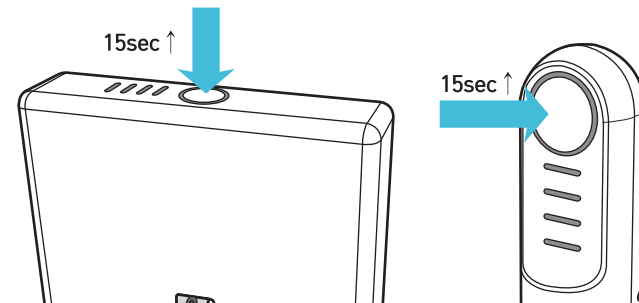
- Press the reset button by using paper clip or sharp material.
クリップ (clip) またはそれに相応する細い道具でリセットボタンを押す
클립이나 뾰족한 도구를 이용하여 리셋버튼을 눌러준다.



Synchronization

同期化する
동기화 시키기

- Press both buttons on the main product and the remote control at the same time for 15 seconds.
本体(メイン製品)とリモコンの電源を同時に長く(約15秒以上)押す
메인제품과 리모콘의 전원을 동시에 길게(15초 이상) 누른다.



LED Light Signal

LED点滅信号
LED 불빛신호

- Button LED Color



[LED GREEN]

Switch Closed
開閉器が閉まる
개폐기 닫힘



[LED RED]

Switch Opened
開閉器が開く
개폐기 열림

- Synchronization LED



1-3, 2-4 LED Blink
1-3, 2-4 LED がチカチカ光る
1-3, 2-4 LED 깜빡임

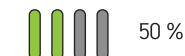
- Verifying battery remains



100 %



75 %



50 %



25 %

For more details and other inquiries, please visit our webpage (MyFLiFLi.com).
その他の問い合わせ及び詳細な事項はホームページ(MyFLiFLi.com)をご参照して下さい。
기타 문의 및 자세한 사항은 홈페이지(MyFLiFLi.com)를 참고하여 주시기 바랍니다.

Attention

FCC Part 15.19

This device complies with part 15 of the FCC Rules. Operation is subject to the following two conditions:
(1) This device may not cause harmful interferences, and
(2) This device must accept any interference received, including interference that may cause undesired operation.

FCC Part 15.21

Any changes or modifications (including the antennas) to this device that are not expressly approved by the manufacturer may void the user's authority to operate the equipment.

FCC RF Radiation Exposure Statement

This equipment complies with FCC RF Radiation exposure limits set forth for an uncontrolled environment. This device and its antenna must not be co-located or operating in conjunction with any other antenna or transmitter.

Main Control : This equipment should be installed and operated with a minimum distance of 20cm between the radiator and your body.

Remote Control : This equipment should be installed and operated with a minimum distance of 5mm between the radiator and your body.

Some part of this product can be partly changed.

~ 메인
적합성평가를 받은 자의 상: 주식회사 아이오팩토리(IO FACTORY Inc.)
기자재 명칭 / 모델명: RFID/USN용 무선기기(900MHz 대역 사용 기기) / FAD-1000
제조년월: 별도표기
제조사 / 제조국가: 주식회사 아이오팩토리(IO FACTORY Inc.) / 한국
인증번호: MSIP-CRM-M2X-FAD-10000

~ 리모콘
적합성평가를 받은 자의 상: 주식회사 아이오팩토리(IO FACTORY Inc.)
명칭 / 모델명: RFID/USN용 무선기기(900MHz 대역 사용 기기) / FAD-1000
제조년월: 별도표기
제조사 / 제조국가: 주식회사 아이오팩토리(IO FACTORY Inc.) / 한국
인증번호: MSIP-CRM-M2X-FAD-1000



MyFLiFLi.com