

Internal Photos

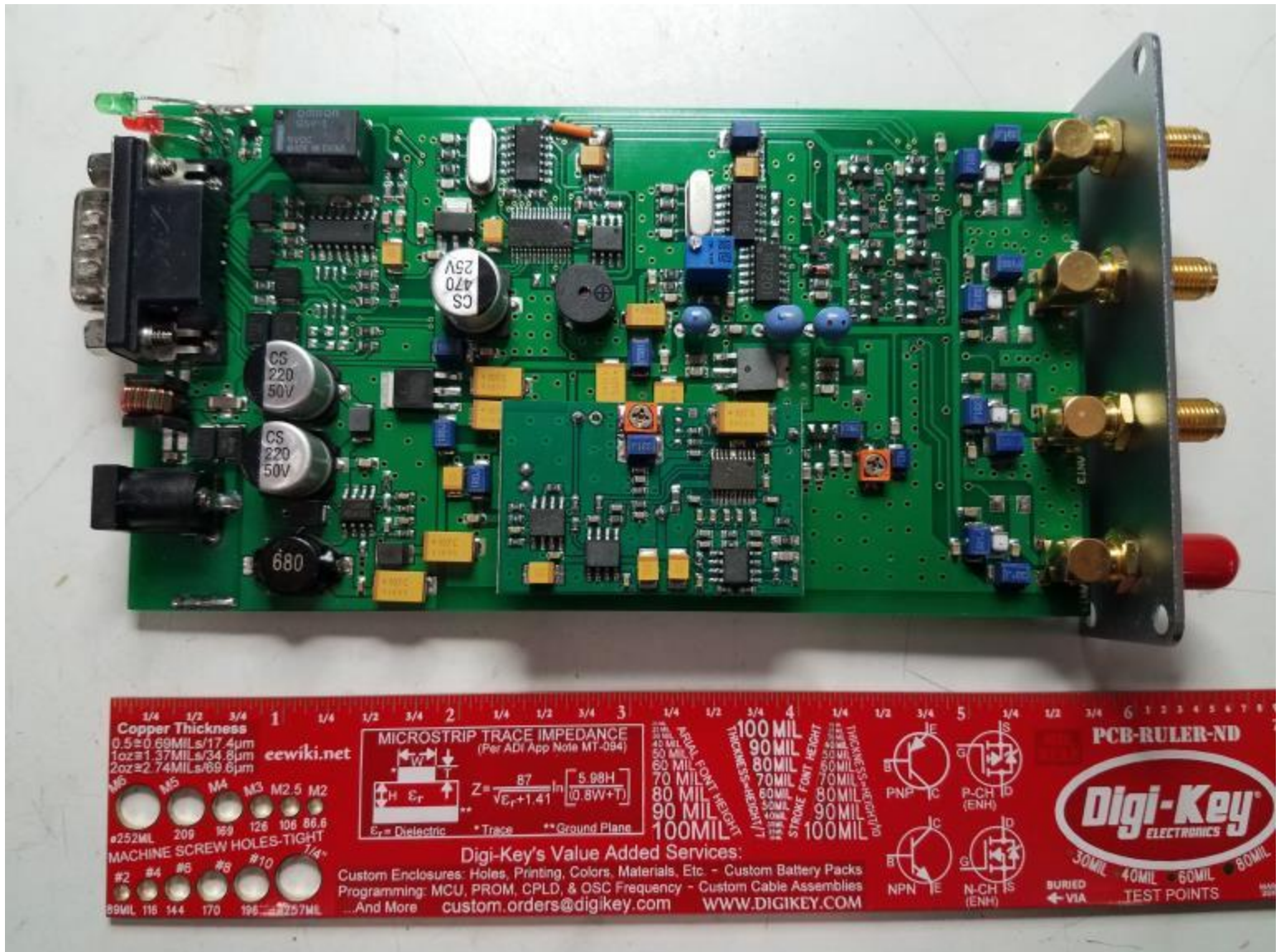


Figure 1 - RF ID Module, Top

Internal Photos

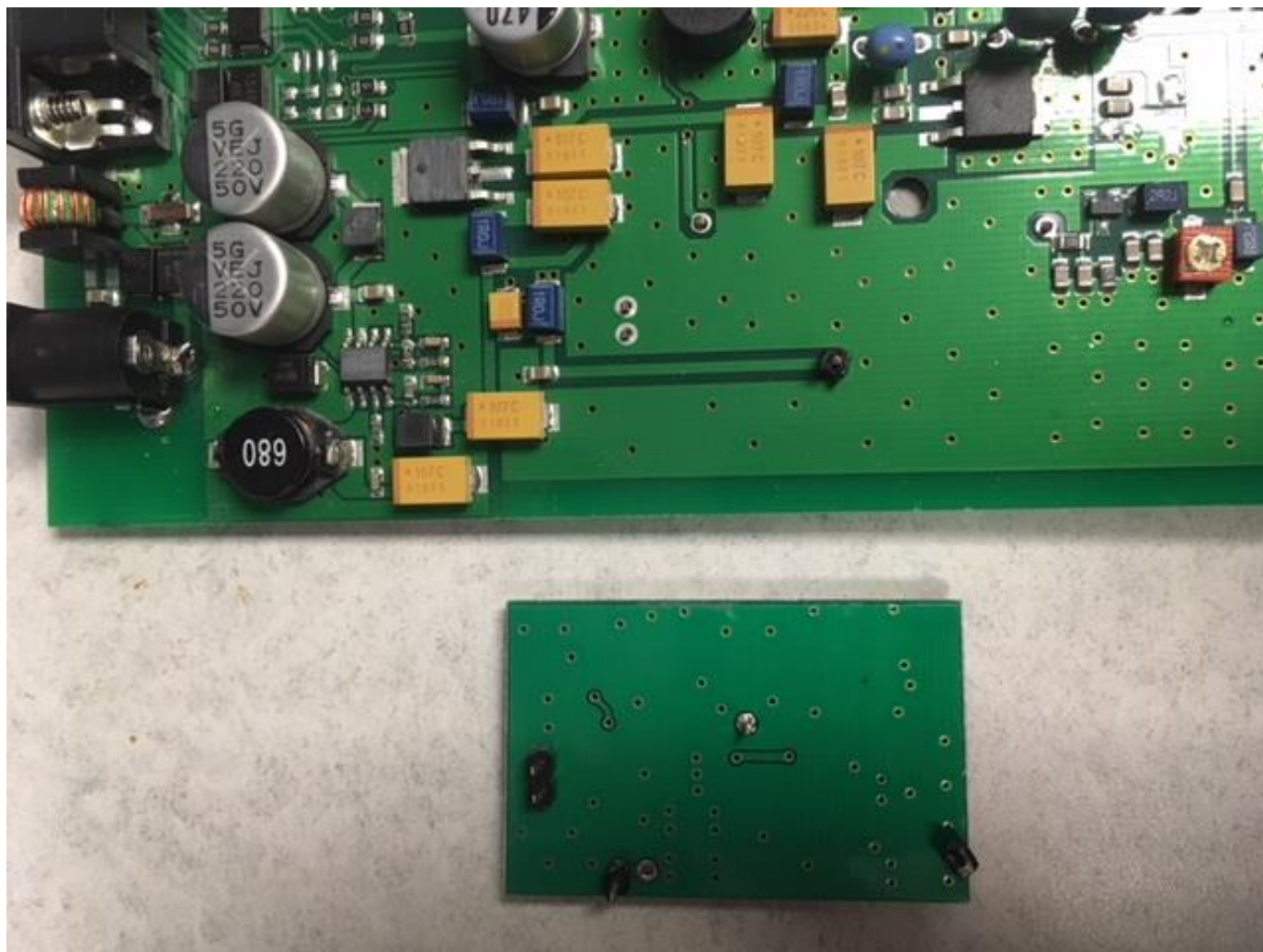


Figure 2 - RF ID Module, Top, Daughterboard removed

Internal Photos

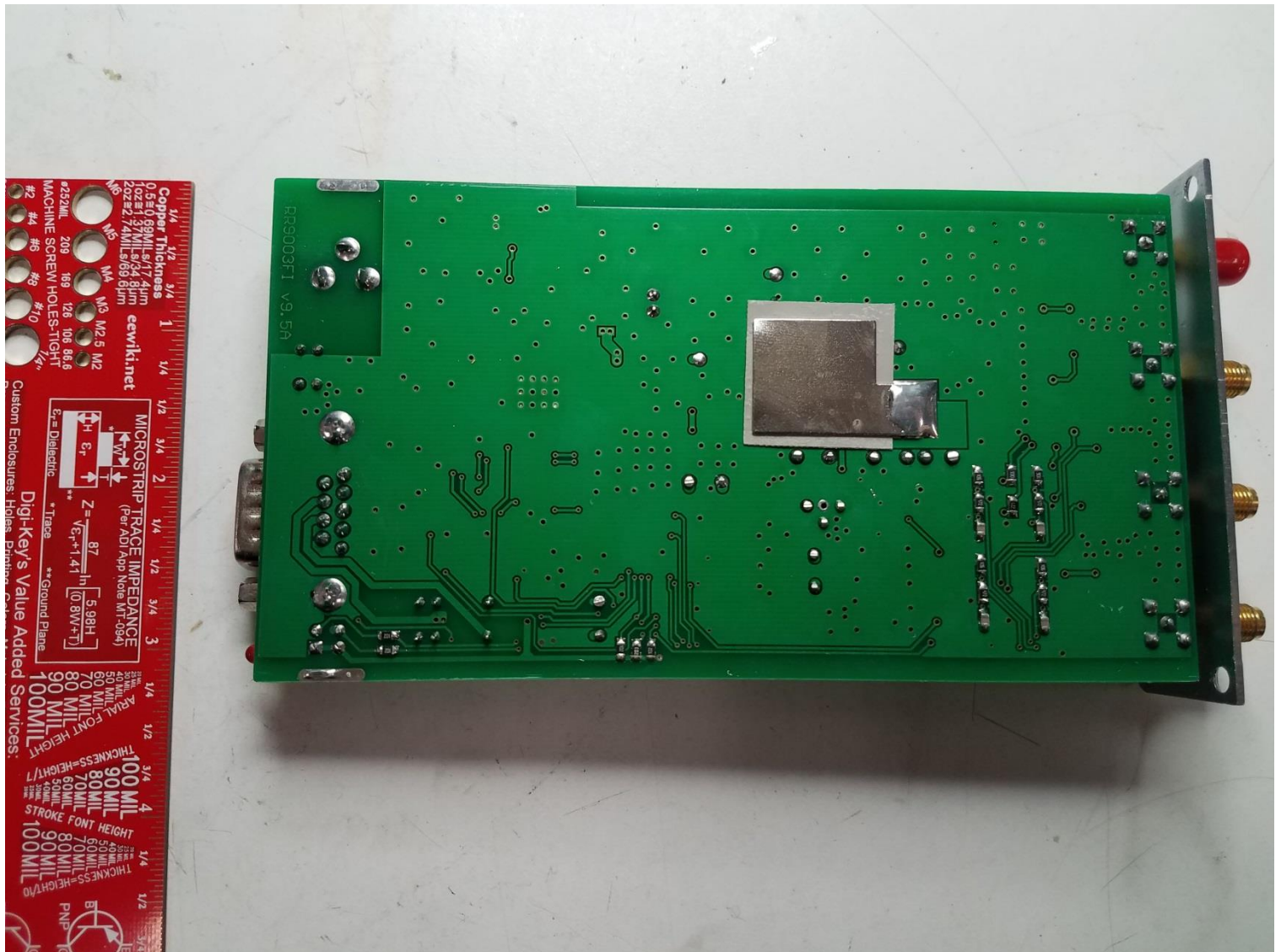


Figure 3 - RF ID Module, Bottom

Internal Photos



Figure 4 - Antenna Balun Enclosure, shown from bottom, (wires cut)

Internal Photos

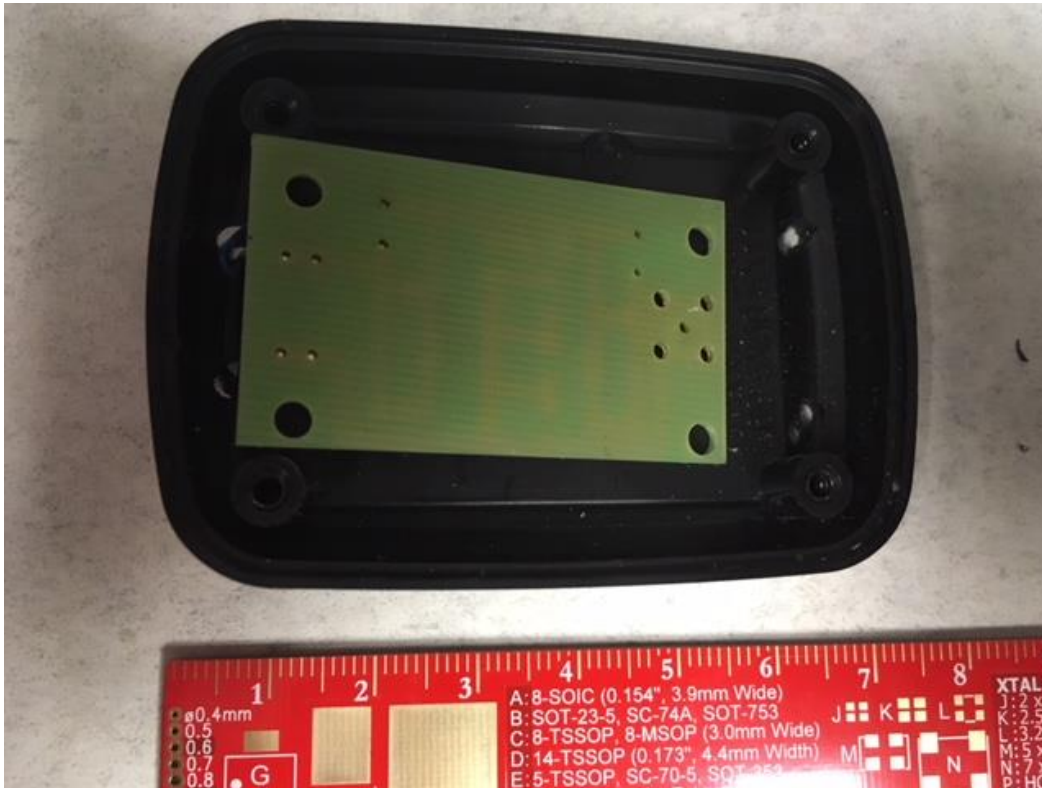


Figure 5 - Antenna Balun Cover open, shown from top (wires cut)

Internal Photos

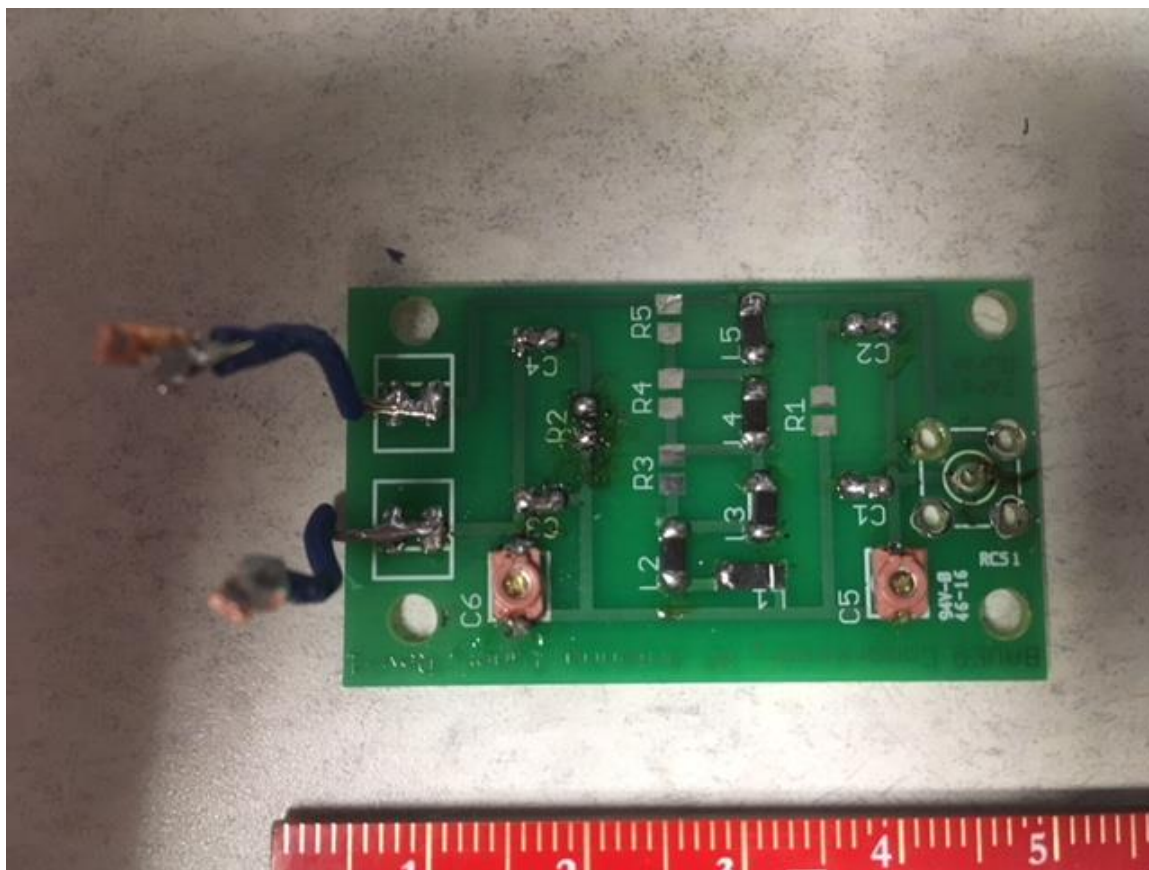


Figure 6 - Antenna Balun, Top, (right-angle SMA connector on right side was removed)

Internal Photos

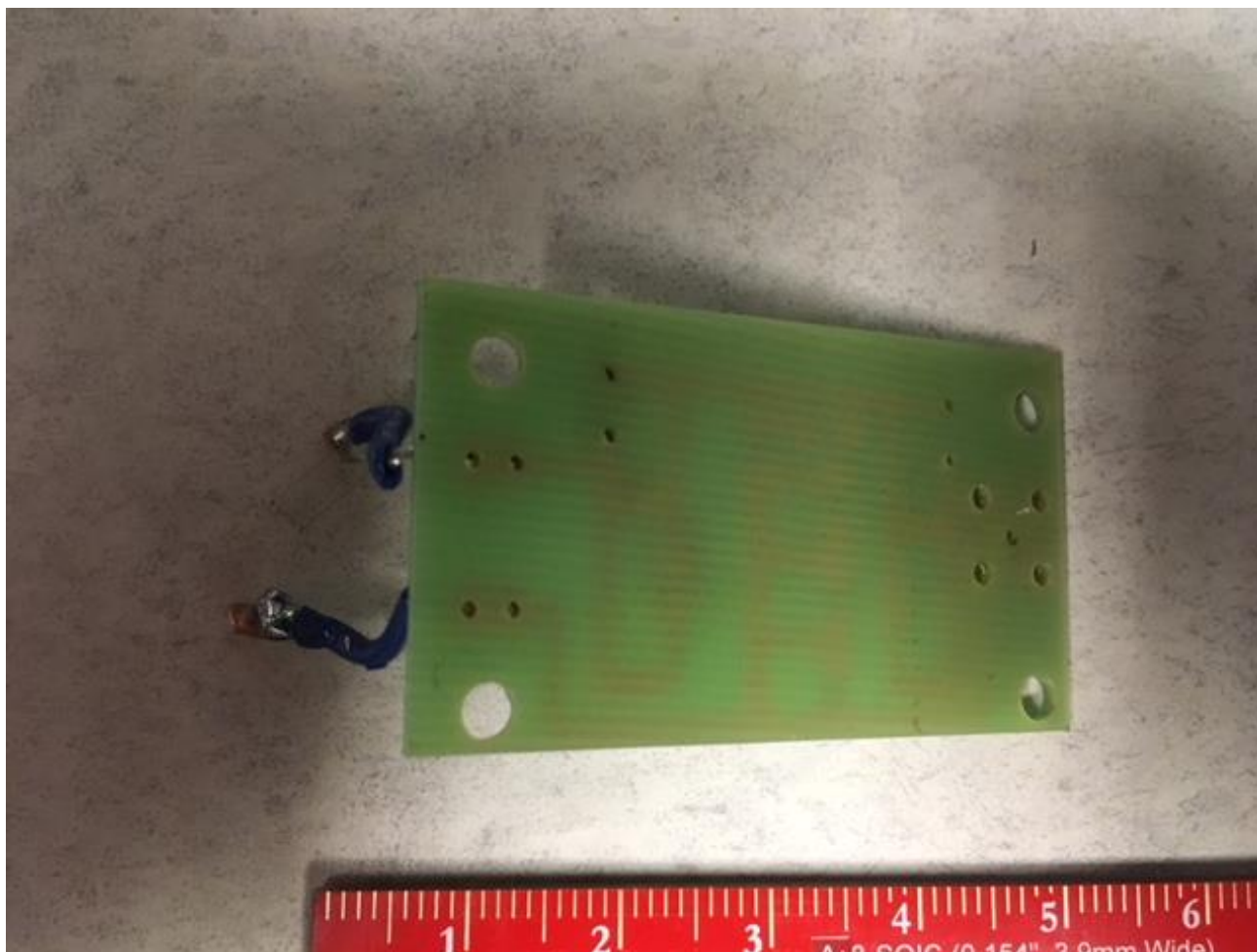


Figure 7 - Antenna Balun, Bottom

Internal Photos



Figure 8 – RF ID balun with SMA connector

Shows shrink-wrap which prevent disconnecting the antenna.

Internal Photos



Figure 9 – Loop antenna (wires cut)

The balun shown in figures 3 – 6 is connected to a wire loop antenna that goes around the circumference of the cylindrical tank storage bin.

All 3 antennas and baluns are identical.

Internal Photos