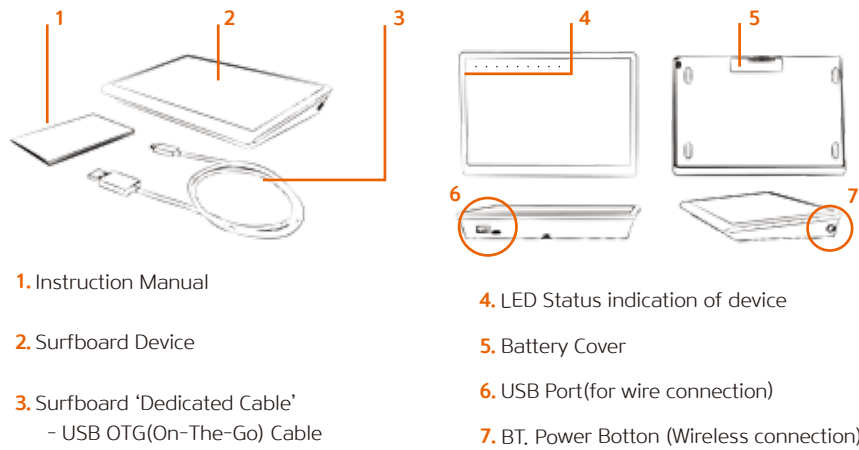




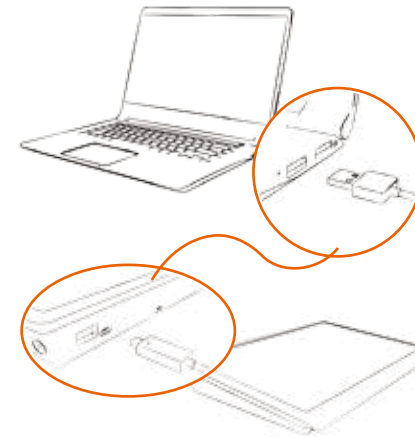
Product Instruction Manual

Product Composition



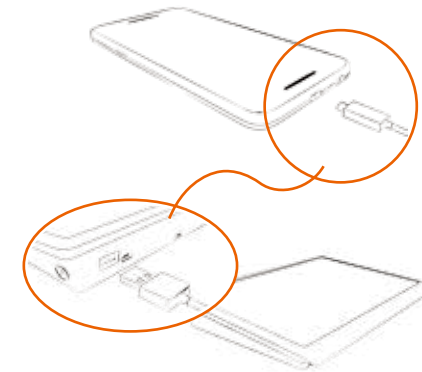
USB Connection

► PC



► Smart Device

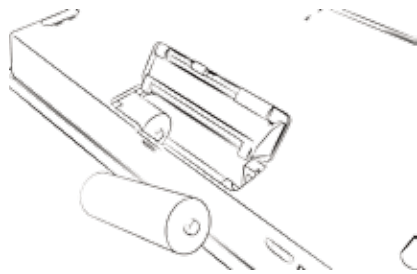
Please use the "USB cable" included in the box ONLY!



BT. Connection

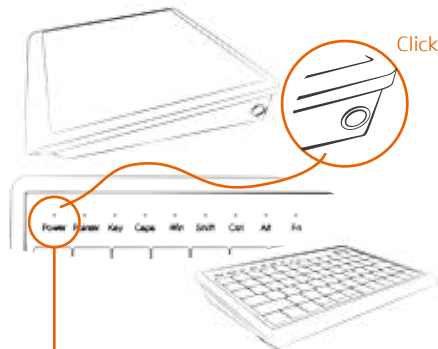
There can be crossed during wireless operation.
∴ DO NOT use this device for human safety service.

► Insert Battery



Open the battery cover and insert two 'AA' batteries.

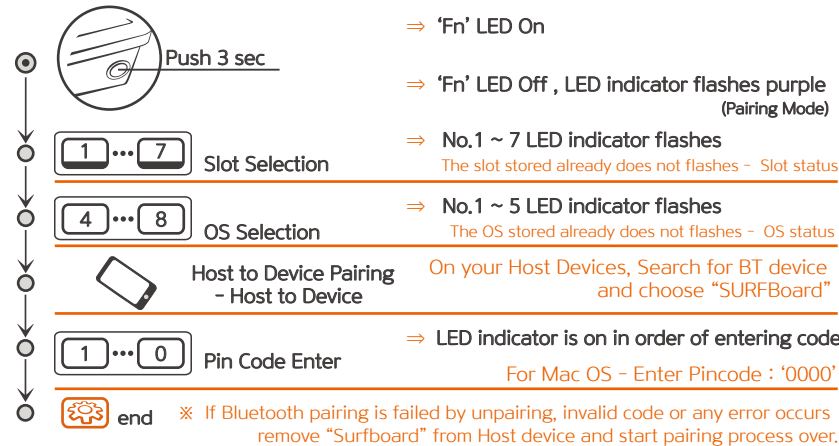
► Power On



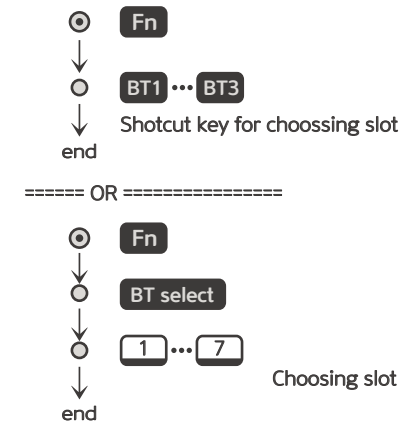
⇒ LED indicator flashes blue after connection is completed.

※ Power Off : Press for 1Sec

► BT. Pairing ※ Pairing Cancel 'ESC'



► BT. Reconnection



Device Setting

1. "SURFBoard" does not need other devices to set for basic use.

※ Surfboard does not need other devices to set for basic use.

You can download at our website, www.lentus.co.kr.

2. Press Setting button for 2 secs for Setting Mode.

The support functions are following:

- Select OS
- Adjust pointer speed
- Adjust scrolling speed
- "Maker" Initialization

► How to Use Setting Mode

