

Wireless Audio System

JY-R700

User Manual

Please read all details of this manual prior to using this device for the proper use of the product and any error or malfunction prevention.

Made for



iPod



iPhone



iPad



Bluetooth™



Content

Introduction

Accessories included	4
About this manual	5
Battery charging this device	6

Names of components and parts8~9

Getting started

Turning on lights/power	10~11
-------------------------------	-------

Listening to music via Bluetooth connection

Pairing the device with the equipment	12~13
Connecting the Bluetooth device paired and playing music	14~15
Automated connection and playing music	16~17
Multi connection with Bluetooth and playing music	18~19

Making phone calls with the Bluetooth equipment

Placing outgoing calls/ taking incoming calls	20~21
---	-------

Listening to stereoscopic music via the Bluetooth dual play

Dual play	22~23
-----------------	-------

Listening to external source of music

Connecting external device	24~25
----------------------------------	-------

Trouble shooting26~27

Product specification28~29

Cautions30~32

Product Warranty36~37



Introduction

Please check the packaged items inside and carefully read this manual

Accessories included



Data cable



User manual



Main component (JY-R700)

About this manual

- **Operation**

iPhone you see in this manual is interchangeable with iPod touch or iPad.

- **Figures**

Figures and descriptions may not be congruent with actual items.

Any typographical errors or incorrect information discovered within this manual may be changed by JINYOUNG G&T without prior notice. Pertinent wireless equipments may experience transmission problems while being operated. Services related to the safety of human lives cannot be delivered.

Introduction

Please check the packaged items inside and carefully read this manual

Battery charging this device

Please use the USB cable supplied with to connect with the device and the AC adapter for charging batteries for the initial use of this device.

- Red LED indicates that this device is being charged, purple LED indicates 80% charged, and blue LED indicates full batteries.
- It takes approximately 5 hours to fully charge batteries if the device had been turned off, and approximately 7 hours if the device is on.



AUX USB Charge Signal

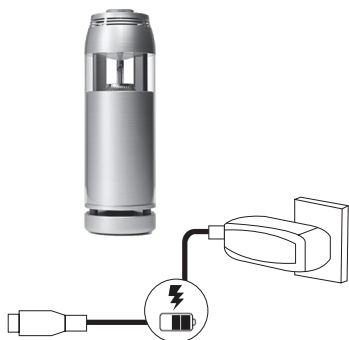
Charge Signal

- When batteries are low, red LED and alarm will go off every minute to indicate low batteries.
- Failure to charge batteries at this time may cause the power to go off.

Battery Signal

- The LED signal at the bottom indicates battery status in different colors.

Battery status	High	Medium	Low
LED signal	Blue LED blinks	Purple LED blinks	Red LED blinks
Battery status			



- **USB (USB. POWER)**

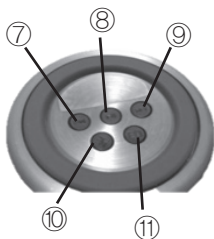
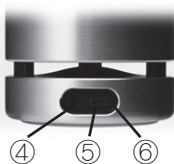
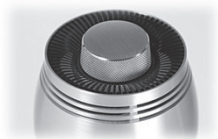
Use the USB cable supplied with to connect the AC adapter to charge batteries.

※ **Cautions**

- The device may charge faster than usual or may not charge at all in places where the temperature is extremely high or low.
- The device must be charged every six months for performance maintenance.
- Rechargeable batteries have limited life. Their capacity will incrementally decline as per the frequency of use and time consumed.
- Rechargeable batteries have a different life depending on how they are stored, used, and where they are used.
- The use of the device running on batteries in the AC adapter connection may each affect battery life and the sound volume and quality.
- The device power may go off regardless of battery status, subject to volume and lighting conditions.

Names of components and parts

Please carefully study the name and function of each component and part



① **Power/Volume/Call/Light Switch**

- **Power**

- Press : Turns the device on or off.

- Press and hold : Disconnects the Bluetooth device.

- Start chime goes off when the device is turned on, and the end chime goes off when the device is turned off.

- **VOLUME +/-**

- Adjusts volume level when music is played.

- **Call**

- Takes incoming phone call on speaker if pressed.

- **Light +/-**

- Adjusts light contrast or turns on light if pressed.

② **Microphone**

③ **Mood light**

④ **AUX connection termina**

connects external device via the 3.5mm stereo plug.

⑤ **DC IN**

connects the mobile phone AC adapter.

⑥ **Charge signal**

⑦ **RWD Button**

⑧ **PLAY/PAUSE Button**

⑨ **FWD Button**

⑩ **BT Button**

⑪ **EQ Button**

Getting Started

Please turn on the device after reading all details of this manual prior to using this device

Turning on lights/power

1. Switch on

Press the dial knob of the power switch for two seconds. The device will turn on after the start chime. Then the device can play music.

2. Switch off

Press the dial knob of the power switch for five seconds. The device will turn off after the end chime.



Power save mode

- The product will automatically turn off to save power if there is no entry signal of any external equipment for 20 minutes as unpaired.
- Press the dial knob at the top of the speaker if the speaker is automatically turned off. (Press the dial knob button at the top of the speaker for five seconds to turn the power off. Press for two seconds again to turn it back on.)

Auto standby mode

- The auto standby mode is activated as follows. (Default) The equipment will automatically turn off if there is no device connected to AUX or Bluetooth for 20 minutes.

Light contrast mode

Contrast may be adjusted if the device is turned on.

1. Click the dial knob once.
2. Turn clockwise or counterclockwise to adjust contrast.
3. Turn the dial knob to achieve the contrast desired, which will be maintained until the power is switched off. (Click the dial knob button once each time to “Adjust volume → Adjust mood lighting → Adjust volume mode.” Press the button to adjust contrast or volume of the mode desired.)

Adjust and Activate Light Contrast

- Light contrast is automatically activated for long hours if the device is connected with Bluetooth or AUX.
 - Light is activated if the device is not connected with Bluetooth or AUX.
1. Click the dial knob once to prompt light setting when the power is on.
 2. Turn the dial knob to achieve the contrast desired.
 3. The light will stay activated without interruption thereafter.

Listening to music via Bluetooth connection

Music can be played wireless from Bluetooth compatible devices

Pairing the device with the equipment

The device must be registered with the equipment if the Bluetooth device is connected with equipment for the first time. This process is called “pairing.” The following process need not be repeated after registration is completed.

Easy registration

- 1) Switch on the speaker.
 - When the speaker is set to search mode, LED at the bottom of the speaker will blink twice every two seconds.
- 2) Search Bluetooth menu and new equipment on the mobile phone.
 - Select and register ‘JY-R700(XXX)’ from the searched device list.
 - ※**Note:** Speaker is the last three digits of the Bluetooth address. For example, if the Bluetooth address is 9C:20:98:4A:F0:85, then that will correspond to “JY-R700(085).”
- 3) Enter four zeros when asked for PIN during the registration process.
 - Some mobile phones may skip the PIN entry step.
 - If connection is completed via hands-free or speaker connection, or auto completed, there is not a problem.
- 4) Manual registration is required if registration with another equipment is needed.
 - The speaker will automatically turn off if connection with mobile phone is not made within 20 minutes.

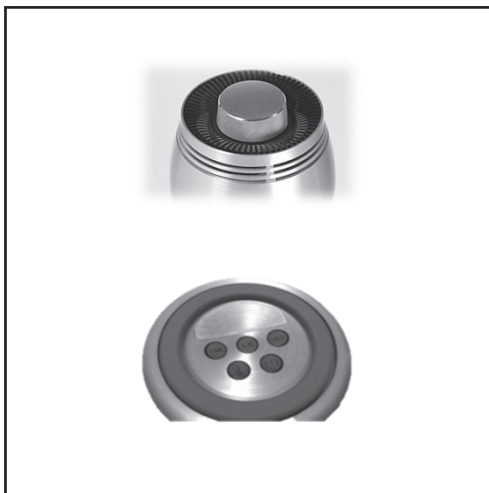
Manual Registration

For re-registering speaker and registering with other equipments

- 1) Press the BT button on the speaker when the power is on.
 - The device will set to the speaker search mode, and the blue LED will blink.
- 2) Repeat steps 2 through 4 of the “Easy Registration” process.
 - If the device’s pairing information is deleted, pairing must be executed again to reconnect.

※ **Note**

Please note that some devices may not register.



Connect Bluetooth and Play

Connecting the Bluetooth device paired and playing music

If the equipment is connected with another device via Bluetooth connection, that connection will be terminated before connecting with a new device desired.

1. Press the dial knob button to switch on the device.
(For registering the Bluetooth speaker with mobile for the first time, press the BT button at the bottom of the speaker to search and register the device.)
2. Execute the Bluetooth connection.
 - Turn on the Bluetooth function and select "JY-R700."
 - Signal will blink in blue if connection is established, and the device will activate the Bluetooth connection chime.
 - If the device is the latest device connected via Bluetooth, switching on this equipment will activate auto connection with the connecting device via Bluetooth.
3. Play music on the connected device.
4. Turn the dial knob switch clockwise or counter-clockwise to adjust volume.

※ Caution

Do not use high volume by turning the knob clockwise to avoid hearing impairment. Warning chime will go off at the highest volume level.



- ※ aptX HD(24bit) is a wireless Bluetooth technology that delivers CD-quality audio experience while preventing acoustic loss. It empowers a very clean and gentle music and movie watching experience.

Note : It automatically activates only on mobile phones or audio equipments that support aptX HD.

Connect Bluetooth and Play Music

Auto connect and play music

- Mobile phone connection will terminate if the speaker is switched off. If the power is switched back on within the reach of transmission, the connection will automatically re-establish.
- Select 'JY-R700(XXX)' from the mobile phone's Bluetooth menu to connect second mobile phone.

Out of Reach

- Connection with mobile phone will terminate if the speaker is set apart approximately 10 meters away from the mobile phone for the weak transmission. If the speaker returns to the proximity within 5 minutes therefrom, connection will automatically re-establish.
- ※ Note : If connection is lost, LED will blink and the loss chime will activate every 30 seconds. If auto connection is not made, short press the Play/Pause button at the bottom of the speaker to manually connect.
- If the speaker is switched on, search the mobile phone previously registered to attempt auto connect.
- ※ Note : If auto connection is not made, attempt to connect from your mobile phone, or delete registration list to re-register.

Audio Streaming

- Play : Short press the Play/Pause button.
- Pause : Short press the Play/Pause button while playing music.
- Next song : Short press the FWD switch.
- Previous song : Short press the RWD switch.



Equalizer (EQ)

- Press the EQ button to change to the equalizer mode while playing music. The following sequence will initiate if the button is repeatedly pressed:
Normal → PWR Boost → Normal



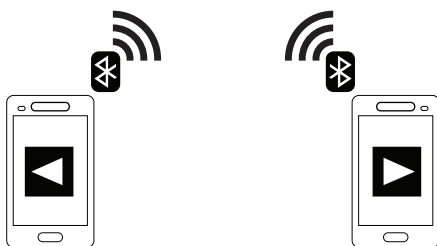
Connect Bluetooth and Play Music

Multi Connect with Bluetooth and Play Music

You can Bluetooth connect with two mobile equipments simultaneously and play music on the selected equipment.

Muti Connection

- 1) Refer to the manual registration procedures to register and connect one of the two mobile phones equipped with Bluetooth function.
 - 2) Refer to the 'manual registration' procedures to connect from the other mobile phone. This mobile phone will become the master mobile phone.
 - 3) Reconnect with the mobile phone initially registered and connected. This mobile phone will become the secondary slave mobile phone.
- ※ Note: If the speaker is connected with two mobile phones simultaneously, the relevant function will activate with the master mobile phone.



Making Phone Calls with Bluetooth Equipment

You can make phone calls from Bluetooth devices

Placing outgoing calls / taking incoming calls

Placing outgoing calls

- Placing outgoing calls from mobile phone will automatically initiate calls on speaker.

Taking / ending incoming calls

- Press dial knob to take or end incoming calls.
- Ring tone will go off on the speaker if there is an incoming call.

Call Switch

- Press dial knob for 2 seconds while on a call to switch calls.
(Mobile phone → Speaker → Mobile phone)

Call Waiting

- If there is another incoming call while you are on a call, press the FWD button at the bottom to end the existing call and take the new incoming call. If there is another incoming call while you are on a call, press the Play button to put the existing call on wait and take the new incoming call. Press the Play button again to switch back and forth.
 - Short press the Call button to end the call, or end both calls simultaneously. However, you can set these features under the mobile phone's setting.
- ※ Note: Inquire with your carrier on the 'Call Waiting' auxiliary service.

Reject Call

- Press the Call button for 2 seconds to reject an incoming call when the bell rings.



HD Voice

Supports high-quality voice call and audio experience.

Note: Your carrier must provide high-quality voice call features.

Listening to Stereoscopic Music via the Bluetooth Dual Play

You can connect two Bluetooth devices wireless to listen to stereo sound

Dual Play (Optional)

You can use two speakers to enjoy music on stereo, and you need two units of speaker.

1. Connect (a) or (b) speaker with your mobile equipment in advance.
2. Press the FWD button on (a) speaker for 2 seconds. (At this time, the dual play entry alarm of "Ding" will go off every 5 seconds.)
3. Press the RWD button on (b) speaker for 2 seconds. (At this time, the dual play entry alarm of "Ding" will go off every 5 seconds.)
4. The alarm of "Ding" will not recur if the two speakers are connected. (It means that the two speakers are connected.) If connection failed, try again from the start.
5. Connect the registered speaker (a) or (b) while the mobile phone's Bluetooth is powered on.



-
- You can adjust the two speakers' volume simultaneously while in the dual play mode.
 - If the master speaker is switched off, the other slave speaker will automatically switch off.
 - Long press the FWD or RWD button to deactivate the dual play connection.
 - Dual play can be activated on Androids and iOS equipments.
 - Dual play is connectable with mobile equipments only from one of the Bluetooth speakers ((a) or (b) speaker).
 - Dual play is run on this speaker alone with Androids and iOS equipments. Other smart audio products do not offer this function.
 - Multi connection for Bluetooth is not enabled while dual play is on.
 - You cannot change to other equipments unless you disconnect the previously connected mobile equipment while dual play is on. You can connect with other mobile equipments after disconnection is made.
 - You cannot search this equipment from other Bluetooth equipments while dual play is on.

Listening to External Source of Music

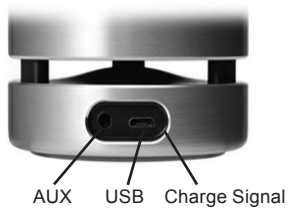
This equipment can play external devices connected to the AUX terminal. For this connection, 3.5 mm stereo mini-plug cables, which are available in the market, are needed.

Connecting External Device

1. Connect cable to the equipment's AUX terminal.
2. Connect the cable's the other end to the external device.

Play

1. Press the dial knob button for 2 seconds to play the equipment.
2. Play from the external device.
 - For details on play, please refer to the User Manual accessory to the external device.
 - While the AUX cable is connected, BT music will not be played.



- Please keep low this equipment's and external device's volume before connection.

Trouble Shooting

Bluetooth

Problem	Cause
Equipment cannot pair with Bluetooth device.	Equipment is switched off.
	Equipment is connected with other Bluetooth device.
	This equipment and device are too distant from each other.
	Devices transmitting 2.4GHz of frequency band (such as microwave oven and wireless LAN) are located.
	Devices such as Bluetooth adapter pairing with this equipment are set to passwords other than "0000."
	Bluetooth device does not support A2DP.
Bluetooth connection failed.	Equipment is switched off.
	Other Bluetooth device is connected.
	Device's Bluetooth function is switched off.
	Pairing information is deleted.
	This equipment is not registered with the device's Bluetooth connection list.
The sound will not be heard or the sound will be interrupted during playback.	Connecting device's volume is set too low.
	Connecting device's Bluetooth audio signals are not set to be sent to equipment.
	Equipment's and device's Bluetooth connection is terminated.
	Devices transmitting 2.4GHz of frequency band (such as microwave oven and wireless LAN) are located.
	This equipment and device are too distant from each other.

Solution

Power on equipment and execute pairing.

Terminate the existing Bluetooth connection and execute pairing with new device.

Execute pairing between equipment and device within 10 meters of distance

Separate this equipment from the radio signal transmitting device.

Use Bluetooth adaptors ending in "0000" for password.

Execute pairing with device supporting A2DP.

Switch on equipment.

Terminate the existing Bluetooth connection and reconnect with applicable device via Bluetooth.

Switch on device's Bluetooth function.

Execute pairing again. This equipment can execute pairing with 8 devices. If pairing is executed with 9th device, the oldest pairing information will be deleted.

Execute pairing again.

Increase connecting device's volume.

Switch to produce connecting device's Bluetooth audio signals via equipment.

Execute Bluetooth connection again.

Separate this equipment from the radio signal transmitting device.

Relocate connecting device to 10 meters from within equipment.

Product Specification

Bluetooth

Bluetooth Version	Version 3.0
Profile Support	Hands-free/A2DP/AVRCP
Compatible Codec	SBC, aptX, aptX HD
Wireless Output	Bluetooth Class1
Operating Frequency Band	2420 MHz ~ 2480 MHz
Maximum Communication Range	10 meters (without obstacles)

AUX

Entry Connector	3.5 mm Stereo Mini Jack
-----------------	-------------------------

Rechargeable Batteries

Built-in Batteries	Lithium Ion Batteries
Capacity / Voltage	5000 mAh / 3.6V
Play Time	Appx. 12 hours from full charge (Output: 500mW)
Recharge Time	5 hours or less from power off

General


Rated Input Voltage	DC4.75V ~ 5.25V, 1200mA
Operating Temperature	-10°C ~50°C
Volume (W x H)	77pi x 233mm
Weight	750g



"Made for iPod", "Made for iPhone" and "Made for iPad" signify that electronic accessories are specifically designed to connect with an iPod, iPhone or an

iPad, respectively, and are certified by the developer to comply with Apple performance standards. Apple is not responsible for the operation of this device or compliance with safety and regulatory standards. Using this accessory with your iPod, iPhone, or iPad may affect wireless performance. iPad, iPhone, iPod, and iPodtouch are trademarks of Apple Inc., registered in the United States and other countries.

Bluetooth

- Bluetooth is a technology for wireless communication between devices at distances of less than 10 meters, and uses the 2.4 GHz frequency band, which can be used without a license.
- The Bluetooth  character brand and logo are registered trademarks owned by Bluetooth SIG, Inc.
- Bluetooth is a registered trademark of Bluetooth SIG and is used by JINYOUNG G&T under license agreement.

Bluetooth communication processing

- The 2.4 GHz band used by Bluetooth compatible devices is the radio band shared by various types of devices. Bluetooth-compatible devices use technology that minimizes the impact on other components that use the same wireless band, but these effects can reduce communication speed and distance, and in some cases intercept communications. Depending on the user environment, wireless communication may be interrupted.
- The signal transmission speed and the distance that can be communicated are the distance between communicating devices, whether or not obstacles exist. It depends on the radio state and device type.
- JINYOUNG G&T does not guarantee that all wireless connections between this unit and the device are compatible with the Bluetooth function.

©2013CSR plc and its affiliates,

aptX® mark and the aptX logo are trademarks of CSR plc or one of its affiliated companies and may have been registered in more than one jurisdiction.

Android™

Android and Google Play are trademarks of Google, Inc.

Cautions

◆ Cautions for using the product

- Be careful not to drop the equipment from height.
- Please be careful not to repair or disassemble.
- Avoid contact with water, alcohol, benzene, etc.
- Avoid contact with flammable materials.
- Keep away from flammable materials.
- Keep away from humidity and dusty places.
- Do not place heavy objects on the equipment.
- If you repair the device at will, you will not be able to receive service.
- There is a risk of explosion if battery is replaced.
- Using a non-compliant charger may cause the product to malfunction.
- Since this product does not support the waterproof function, please avoid moisture or moisture.
- Please be careful to prevent infants from swallowing magnets and small parts attached to the product.
- If you have transplanted medical equipment, please consult with your physician.
- This product is not a medical equipment.
- To prevent unnecessary power consumption when the product is fully charged, remove the charger from the wall outlet.

◆ Safety Information

Prevention of hearing impairment

- If the speaker volume is too high, permanent hearing loss may occur.
- Set the volume to a safe level.
- It may sound normal, but you will get used to it over time as you listen to the higher sounds that can damage your hearing.
- The louder the volume, the faster your hearing can be damaged.
- Experts suggest the following to protect your hearing.
- Limit the amount of time the speakers are used when the volume is set high.
- Avoid the habit of increasing the volume to avoid loud surroundings.
- If you cannot hear people speaking nearby, turn down the volume.
- ※ Note: Please refer to the function guide of your mobile phone to find out how to set the maximum volume limit on your mobile phone.

Class B equipment (household broadcasting communication equipment) :

This equipment is intended for household (Class B) electromagnetic compatibility equipment and can be used in all areas.

Cautions

◆ Battery information

- Rechargeable batteries may have a long life if properly managed.
 - However, if not used for a long time, their capacity may be reduced within a few times of use. Be careful not to expose the battery to extremely high or low temperatures, above 50 °C or below -10 °C.
 - To maintain maximum battery capacity, use the battery at room temperature.
 - When the battery is used at low temperatures, the battery capacity is reduced.
- ※ Note: Batteries are chargeable only at temperatures between 10 °C and 45 °C.

Cautions

FCC NOTICE TO USERS:

This device complies with part 15 of the FCC rules.

Operation is subject to the following two conditions:

- (1) This device may not cause harmful interference, and
- (2) This device must accept any interference received, including interference that may cause undesired operation.

Changes or modifications not expressly approved by the manufacturer (or party responsible) for compliance could void the user's authority to operate the equipment.

FCC Part 15.105 statement

This equipment has been tested and found to comply with the limits for a Class B digital device, pursuant to part 15 of the FCC Rules.

These limits are designed to provide reasonable protection against harmful interference in a residential installation. This equipment generates, uses and can radiate radio frequency energy and, if not installed and used in accordance with the instructions, may cause harmful interference to radio communications.

However, there is no guarantee that interference will not occur in a particular installation. If this equipment does cause harmful interference to radio or television reception, which can be determined by turning the equipment off and on, the user is encouraged to try to correct the interference by one or more of the following measures:

- Reorient or relocate the receiving antenna.
- Increase the separation between the equipment and receiver.
- Connect the equipment into an outlet on a circuit different from that to which the receiver is connected.
- Consult the dealer or an experienced radio/TV technician for help.

Part 15.21 statement

Changes or modifications not expressly approved by the manufacturer (or party responsible) for compliance could void the user's authority to operate the equipment.

MEMO

MEMO

Product Warranty

Warranty period (free/paid service 1 year)

The warranty period is calculated from the date of purchase, so please complete this warranty and keep your receipt.

(If the date of purchase cannot be confirmed, the warranty period will be calculated from the date three months have elapsed from the month of manufacture.)

Free Service

You can receive free service when the product is in normal use and the product is functioning within the warranty period.

We will exchange or refund at the place of purchase when there is serious quality trouble within 14 days after purchase. (Simple change of mind is unacceptable.)

You must bring all of the components, including your purchase receipt and packing, for an exchange or refund.

Paid Service

1. In case of malfunction due to consumer error

- If the consumer disassembles, modifies, or fails due to carelessness (flooding, breakage, damage, etc.)
- If a person who is not a designated service center engineer repairs and a malfunction occurs.
- If a malfunction occurs due to failure to observe the "Cautions" in the User Manual.

2. Other cases

- If a malfunction occurs due to natural disasters (fire, salt damage, flood, lightning)

This warranty is used only in the Republic of Korea and will not be re-issued.

For service, please contact the place of purchase or the following service center if a malfunction occurs.

- Phone: 82-70-4147-0011 (Toll Free)

Product Name JINYOUNG G&T Bluetooth Speaker

Date of Purchase Year Month Day

Place of Purchase Phone

Model Number & Serial number

Compensation will be notified within 7 days of the request date, and the compensation will be settled within 14 days from the notification date.

Warranty Conditions

- The warranty is valid only if the original receipt (with the date of purchase and serial number) of the receipt issued by the seller to the original purchaser is presented with the product to be repaired or replaced. JINYOUNG G&T may refuse to provide warranty service if this information is erased or changed after the initial purchase of the product.
- Under the product's use and maintenance guidelines, this warranty shall not be liable for product malfunctions resulting from normal wear and tear, including those used in normal and unusual ways. In addition, this warranty does not apply to product malfunctions caused by damage caused by liquid materials, incidental events, disassembly or modification, and natural disasters, among other causes.
- This warranty does not apply to malfunctions caused by improper disassembly or repair by a person who is not delegated by JINYOUNG G&T.
- Subject to the conditions of this limited warranty, JINYOUNG G&T warrants that this product will be free from defects in design, materials and workmanship at the time of first purchase by the consumer and for one year thereafter. If your product requires warranty service, return it to where you purchased it, or contact the service center for more information.

Certified tradename: JINYOUNG G & T Co.,

Device name (model name) :

Wireless device for wireless data communication system (JY-R700)

Year and month of manufacture: . . .

Manufacturer / Country of Origin: JINYOUNG G & T Co., Ltd. / Korea



EMOTIONAL AUDIO

Sound Design

©2017 JINYOUNG G&T Corporation
Rev 1.0 KR All rights reserved. JINYOUNG G&T., 2017



JINYOUNG G&T CORPORATION
Printed in Korea