

深圳市森茂微科技有限公司

<http://www.sunmore-etc.com>

Add: 深圳市龙华区龙华街道三联社区三联创业路 19 号弓村新城商业中心 (汇海广场) A 座 19 层 1901、1914 室
Tel: 0755-23498381 Fax: 0755- 23498380

规格书

客户名称 Customer Name: _____

产品型号 Product Model: _____ C18-A

客户料号 Customer P/N : _____

料 号 P/N : _____ WJ.05.0000038

产品规格 SPECIFICATIONS: _____ 频段: 433.92MHz

制作日期 Production date: _____ 2025. 04. 23

封样版本 Sample Version: _____ R1

SUNMROE		
编制 (FICTION)	结构 (Structure)	研发 (R&D)
客户 (Customer)		
采 购 (PUR)	品质 (QC)	研发 (R&D)

<http://www.sunmore-etc.com>

R & D, production and sales of professional wireless terminal antenna

深圳市森茂微科技有限公司

<http://www.sunmore-etc.com>

Add: 深圳市龙华区龙华街道三联社区三联创业路 19 号弓村新城商业中心 (汇海广场) A 座 19 层 1901、1914 室
Tel: 0755-23498381 Fax: 0755- 23498380

一、基本参数

A. Electrical Characteristics	
Frequency	433.92MHz
Gain	0dBi Maximum
B. Material & Mechanical Characteristics	
Material of Radiator	碳钢镀镍
C. Environmental	
Operation Temperature	- 20 °C ~ + 70 °C
Storage Temperature	- 20 °C ~ + 70 °C

二、电性规格

Those specifications were specially defined for C18-A model.

三、暗室简介

Introduction:

Microwave darkroom and no reflection chamber, absorbing short wave darkroom dark room. Microwave darkroom by electromagnetic shielding room, filtering and isolation, grounding device, the ventilation duct, indoor distribution system, monitoring system, ceiling wave material part. It is based on the wave absorbing material as the lining of the shield room, it can absorb the most of the electromagnetic energy into the six wall is a better simulation of the free space conditions.

深圳市森茂微科技有限公司

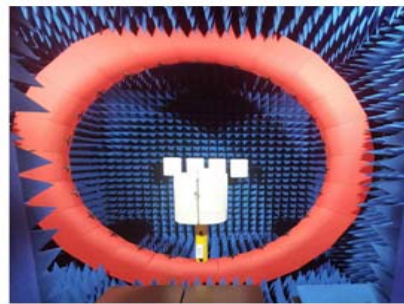
<http://www.sunmore-etc.com>

Add: 深圳市龙华区龙华街道三联社区三联创业路 19 号弓村新城商业中心 (汇海广场) A 座 19 层 1901、1914 室
Tel: 0755-23498381 Fax: 0755- 23498380

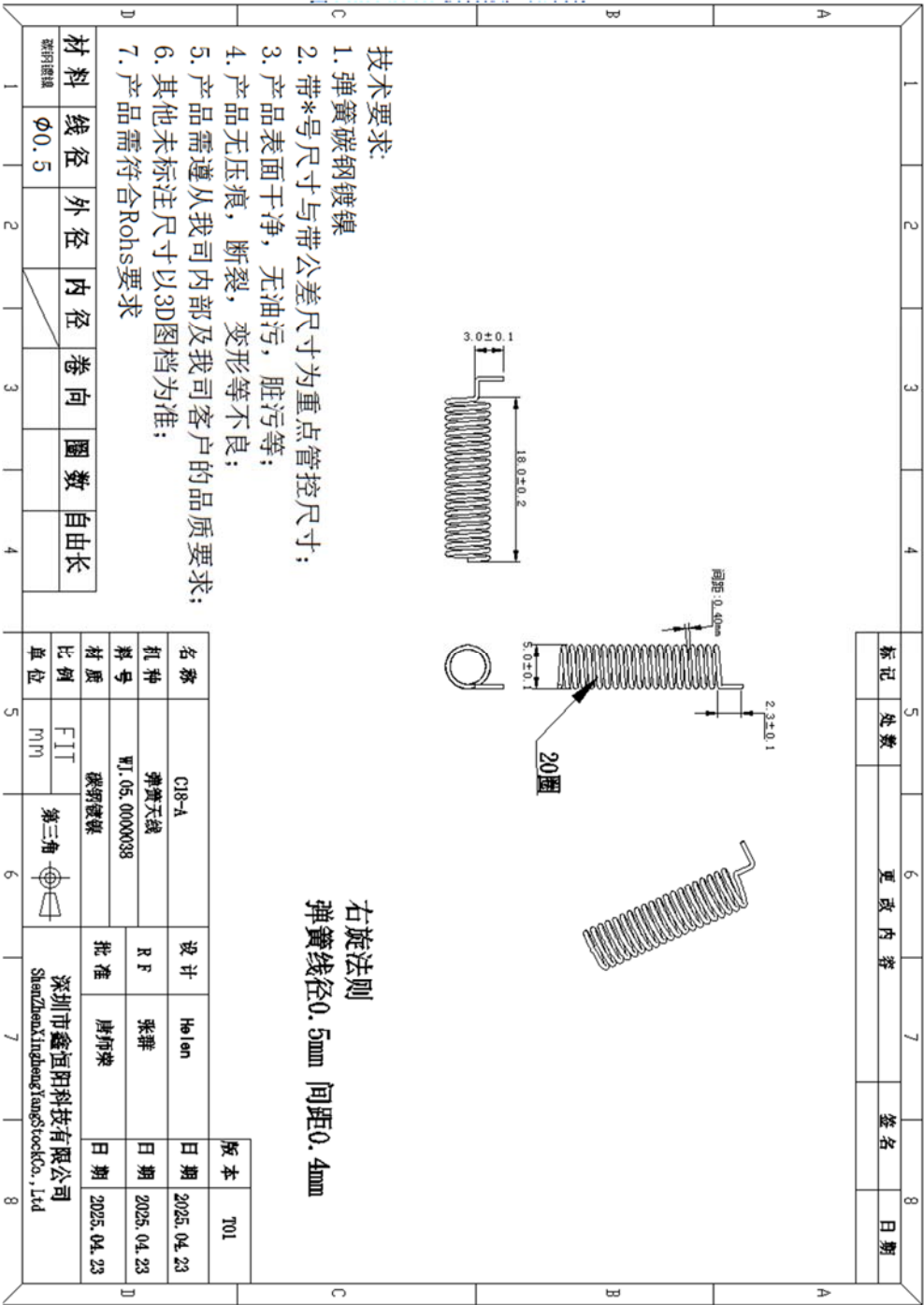
The main working principle of microwave anechoic chamber is according to the electromagnetic wave in the medium from the low magnetic guide magnetic direction of propagation rules, absorbing materials to guide the electromagnetic wave using high permeability, through resonance, a substantial absorption of electromagnetic wave radiation energy, by coupling the electromagnetic energy into heat energy.

main performance :

Frequency range: 400MHz ~ 6GHz ceiling reflected wave loss materials: 400MHz ~ 6GHz is equal to or more than 15dB (microwave absorbing material by composite wave absorbing materials, namely tapered containing carbon sponge suction wave material paste in ferrite)



四、天线图纸尺寸



五、ROHS

Antenna WJ.05.0000038 meets RoHS requirements.

深圳市森茂微科技有限公司

<http://www.sunmore-etc.com>

Add: 深圳市龙华区龙华街道三联社区三联创业路 19 号弓村新城商业中心 (汇海广场) A 座 19 层 1901、1914 室

Tel: 0755-23498381 Fax: 0755- 23498380

六、 产品包装说明

A. packing should meet the moistureproof, vibration, pressure and mildew proof, etc.

B. the smallest packing unit logo must have the manufacturer trademarks, product model, name, code and quantity.

C. in the attached packing list, certificate of approval, and the factory inspection report.

*****END*****