

CR PHOTOELECTRIC TECHNOLOGY CO. LTD

No. 205 Hongchuan Road, Tongqiao Town, Zhongkai, Huicheng District, Huizhou City, China

ChinaTel:0752-3166801 FCC ID: 2AL9S-MRFS1G09

---

## **433.92MHz module specification**

# **MRFS1G09**

### **Important Notice:**

CR PHOTOELECTRIC reserves the right to make changes to its products or to discontinue any integrated circuit product or service without notice. CR PHOTOELECTRIC integrated circuit products are not designed, intended, authorized, or warranted to be suitable for use in life-support applications, devices or systems or other critical applications. Use of CR PHOTOELECTRIC products in such applications is understood to be fully at the risk of the customer.

No. 205 Hongchuan Road, Tongqiao Town, Zhongkai, Huicheng District, Huizhou City, China  
ChinaTel:0752-3166801 FCC ID: 2AL9S-MRFS1G09

ChinaTel:0752-3166801    FCC ID: 2AL9S-MRFS1G09

[illegible]

Table of Contents

1. General Description ..... 4

2. Electrical specification .....4

3. Interface .....4

4. Module packaging information ..... 5

## 1.General Description

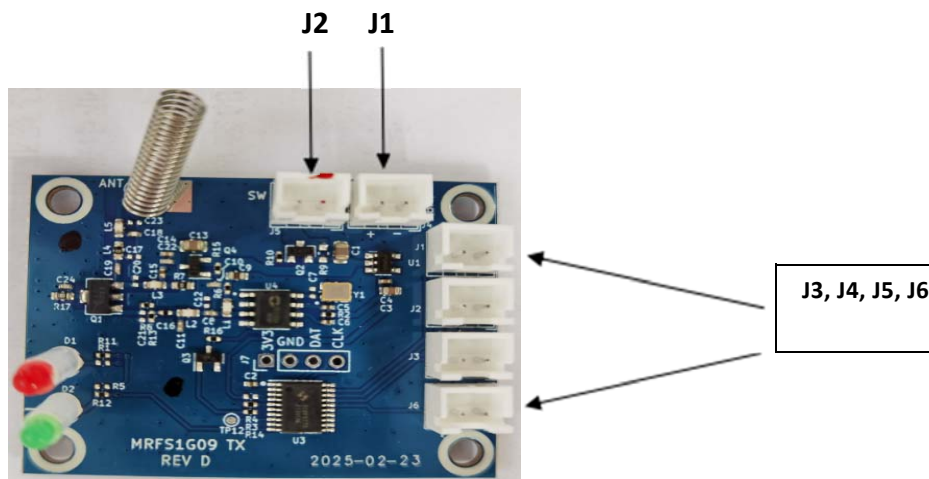
This product is a customized module designed with a medium to micro enhanced MCU and a high-power wireless transmission module. It features flexible and customizable address codes and data operation codes, a wide operating voltage range, low turn off current, high RF output power, and long distance.

Application scope: Remote control access control system, remote control fan, lighting switch, etc

## 2.Electrical specification

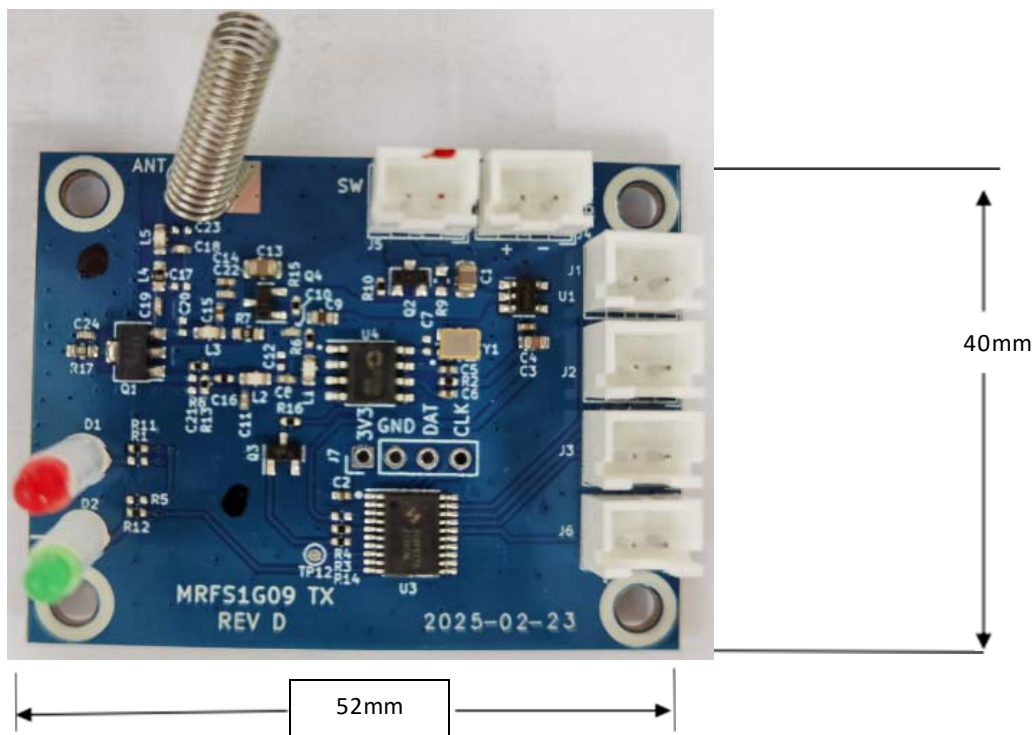
working voltage	DC 5V-12V	
Working current	<150mA (300mA MAX 100% DUTY, DC9V)	
Standby current	<1.5mA	
way of working	Pulse operation	
operation temperature	-20℃~+70℃	
PCB Size	54mm*40mm	

## 3. Interface



J1	POWER IN	DC5-12V
J2	POWER ON/OFF	
J3~J6	KEY	

## 4.Module packaging information



## FCC Statement

FCC standards: FCC CFR Title 47 Part 15 Subpart C Section 15.231

Device is equipped with Integral Antenna , Antenna gain 0dBi

This device complies with part 15 of the FCC Rules. Operation is subject to the following two conditions:

(1) This device may not cause harmful interference, and (2) this device must accept any interference received, including interference that may cause undesired operation.

Any Changes or modifications not expressly approved by the party responsible for compliance could void the user's authority to operate the equipment.

Note: This equipment has been tested and found to comply with the limits for a Class B digital device, pursuant to part 15 of the FCC Rules. These limits are designed to provide reasonable protection against harmful interference in a residential installation. This equipment generates, uses and can radiate radio frequency energy and, if not installed and used in accordance with the instructions, may cause harmful interference to radio communications. However, there is no guarantee that interference will not occur in a particular installation. If this equipment does cause harmful interference to radio or television reception, which can be determined by turning the equipment off and on, the user is encouraged to try to correct the interference by one or more of the following measures:

- Reorient or relocate the receiving antenna.
- Increase the separation between the equipment and receiver.
- Connect the equipment into an outlet on a circuit different from that to which the receiver is connected.
- Consult the dealer or an experienced radio/TV technician for help.

## FCC Radiation Exposure Statement

This modular complies with FCC RF radiation exposure limits set forth for an uncontrolled environment.

This transmitter must not be co-located or operating in conjunction with any other antenna or transmitter.

If the FCC identification number is not visible when the module is installed inside another device, then the outside of the device into which the module is installed must also display a label referring to the enclosed module. This exterior label can use wording such as the following: “Contains Transmitter Module FCC ID: 2AL9S-MRFS1G09 Or Contains FCC ID: 2AL9S-MRFS1G09”

When the module is installed inside another device, the user manual of the host must contain below warning statements;

1. This device complies with Part 15 of the FCC Rules. Operation is subject to the following two conditions:

- (1) This device may not cause harmful interference;
- (2) This device must accept any interference received, including interference that may cause undesired operation.

Note: This equipment has been tested and found to comply with the limits for a Class B digital device, pursuant to part 15 of the FCC Rules. These limits are designed to provide reasonable protection against harmful interference in a residential installation. This equipment generates, uses and can radiate radio frequency energy and, if not installed and used in accordance with the instructions, may cause harmful interference to radio communications.

However, there is no guarantee that interference will not occur in a particular installation. If this equipment does cause harmful interference to radio or television reception, which can be determined by turning the equipment off and on, the user is encouraged to try to correct the interference by one or more of the following measures:

- Reorient or relocate the receiving antenna.

- Increase the separation between the equipment and receiver.
  - Connect the equipment into an outlet on a circuit different from that to which the receiver is connected.
  - Consult the dealer or an experienced radio/TV technician for help.
2. Changes or modifications not expressly approved by the party responsible for compliance could void the user's authority to operate the equipment.

The devices must be installed and used in strict accordance with the manufacturer's instructions as described in the user documentation that comes with the product.

Any company of the host device which install the modular with modular approval should perform the test of radiated & conducted emission and spurious emission, etc. according to FCC part 15B Class B requirement, Only if the test result comply with FCC part 15B Class B requirement, then the host can be sold legally.