

# Quick Installation Guide

DTW5511CL

## Package contents

- Router x 1
- Power adapter x 1
- Ethernet cable x 1
- Manual x 1

Please read this user guide before you start with the quick setup upon the first use.  
This guide instructs how to install and connect the device.

# Get to know the Router

## LED indicator



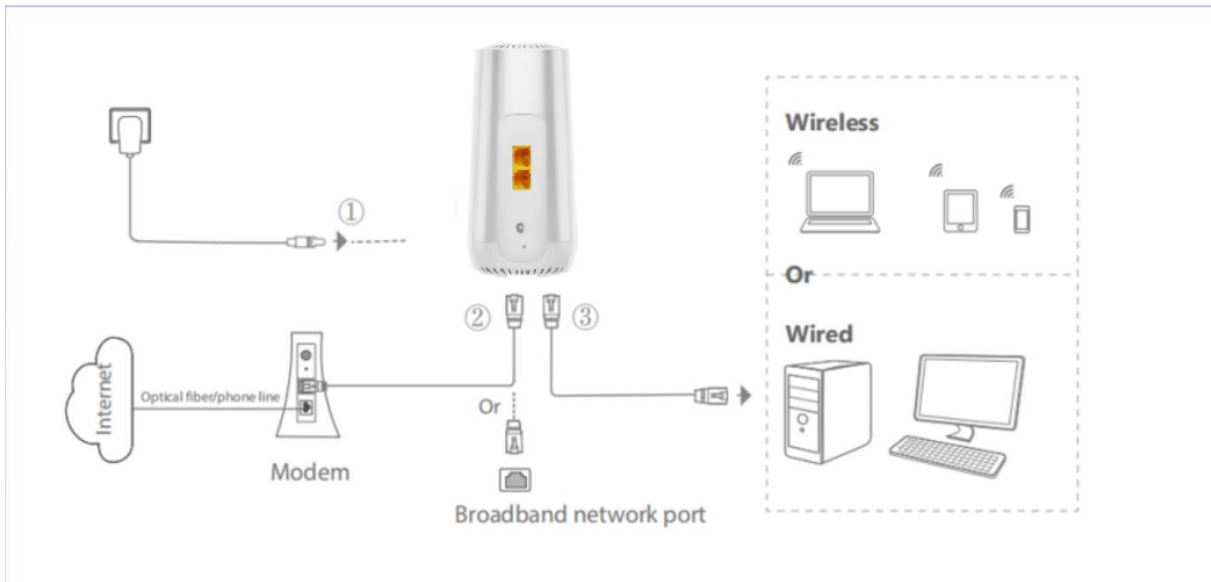
Color	Status	Description
White	Always on	Power on, have internet, create mesh successfully
	Fast Blinking	Create mesh internet
	Slow Blinking	No internet or service
Off		Power off

## Ports & Button



Port/Button	Description
RESET	Reset button: To restore the device to factory settings: After the device completes startup, press the button for morethan10 seconds and release it. The LED indicator will light off in a few seconds.
DC	Power jack: Please use the adapter included in the accessories.
WAN	WAN port: Used to connect to a modem or ONT for internet access.
LAN	LAN port: Used to connect to devices, such as switches and computers.

# 1. Connect the Device



For better WiFi performance, it is recommended that the router be positioned according to the following guidelines:

- Place the router in an elevated, open and unobstructed location, not in confined spaces or corners.
- Place the router away from metal obstructions, such as weak current boxes and metal racks.
- Place the router away from electrical devices with strong interference, such as microwaves, ovens, and cordless phones.

- 1 Power on the router.
- 2 Connect the WAN port of the router to the LAN port of your modem using an Ethernet cable.
- 3 Connect your wireless client such as a smart phone to the WiFi network of the router, or use an Ethernet cable to connect the computer to the LAN port of the router.

**Note: The SSID and password can be found on the bottom label of the device.**

## 2. Configure the Router to the internet

### Step 1: Log in to the web UI

- 1 Start a web browser and visit **<https://192.168.80.1>**.
- 2 Enter the **User Name: ClaroUsuario/Password: ClienteCLARO** login to the settings.
- 3 If you want login with administrator account: User Name: **ClaroAdministrador/Password: soporte< Last\_6\_digits\_SN>**



Introduzca nombre de usuario y contraseña

Acceso

Seleccionar idioma: Español ▼

## Step 2: Set up a WAN connection

Normally no special settings are required to access the Internet, but if that doesn't work you can try the following settings.

- 1 Choose **WAN**> Ethernet WAN.
- 2 Set **Modo de canal** to **IPoE**.
- 3 Set **Tipo de conexión** to **INTERNET\_TR069**
- 4 Click **Aplicar cambios**.
- 5 Click **OK** when **Change setting successfully** is shown on the page.

WAN

> Ethernet WAN

### Ethernet WAN

Esta página se utiliza para configurar los parámetros de Ethernet WAN

nas0_0	
Habilitar VLAN:	<input type="checkbox"/>
VLAN ID:	
802.1p_Marca	
VLAN de multidifusión ID: [1-4095]	
Modo de canal:	IPoE
Habilitar NAT:	<input checked="" type="checkbox"/>
Estado de administrador:	<input checked="" type="radio"/> Permitir <input type="radio"/> Desactivar
Tipo de conexión:	INTERNET_TR069
MTU: [1280-1500]	1500
Mac Clon:	NINGUNO
Ruta por defecto:	<input type="radio"/> Desactivar <input checked="" type="radio"/> Permitir
Habilitar proxy IGMP:	<input checked="" type="checkbox"/>
Enable MLD-Proxy:	<input type="checkbox"/>
IP Protocolo:	IPv4/IPv6

## Step 3: Set the Wi-Fi Configuration

Normally no special settings are required to access the Internet, but if you want change setting you can do as following.

- 1 Choose **WLAN**>**WLAN (5GHz) or WLAN(2.4GHz)**
- 2 Choose **Ajustes básicos**, You can change the Ancho de banda/SSID/Control de banda, etc.

Estado

WLAN

Firewall

Admin

WAN

WLAN (5G)

> Ajustes básicos

> Ajustes avanzados

> Seguridad

> Control de acceso

> Inspección del lugar

> Estado

> Configuración de invitados

WLAN (2.4G)

Easy Mesh

### Configuración básica de WLAN

Esta página se utiliza para configurar los parámetros de los clientes WLAN que pueden conectarse a su punto de acceso. Aquí puede cambiar la configuración de cifrado inalámbrico, así como los parámetros de la red inalámbrica.

<input type="checkbox"/> Deshabilitar la interfaz WLAN	
Banda:	5 GHz (A+N+AC+AX)
Modo:	AP <input type="button" value="Múltiples AP"/>
SSID:	CLARO_AE3E8B
Ancho de banda:	160MHz
Control de banda:	Auto
Country:	Colombia
Numero de canal:	Auto(36)
Potencia de radio (%):	100%
Clientes Asociados:	<input type="button" value="Mostrar clientes WLAN activos"/>
Oculto SSID:	<input checked="" type="radio"/> Desactivado <input type="radio"/> Activado
<input checked="" type="checkbox"/> Enable Universal Repeater Mode (Acting as AP and client simultaneously)	
SSID of Extended Interface:	repeater_ssid1

Aplicar cambios

3 Choose **Seguridad**, You can change the Encriptación/Clave previamente compartida, etc.

WLAN (5G)

> Ajustes básicos

> Ajustes avanzados

> Seguridad

> Control de acceso

> Inspección del lugar

> Estado

> Configuración de invitados

WLAN (2.4G)

Easy Mesh

Configuración de seguridad de WLAN

Esta página le permite configurar la seguridad de WLAN. Activar WEP o WPA mediante el uso de claves de cifrado podría evitar cualquier acceso no autorizado a su red inalámbrica.

SSID Tipo:

Root AP - CLARO\_WIFI8B\_5G

Encriptación:

WPA2/WPA3 Mixed

H2E:

☒ Capable ☐ Required

IEEE 802.11w:

☐ None ☒ Capable ☐ Required

SHA256:

☐ Disable ☒ Enable

Conjunto de cifrado:

☒ AES

Temporizador de actualización de clave de grupo:

86400

Clave previamente compartida:

.....

☐ Show Password

Aplicar cambios

4 Click **Aplicar cambios**.

Step 4: Set the Band steering

Band steering is enabled by default.The SSID is:CLARO\_<last 6 characters of MAC>; you can set the SSID and password by web page. When Band steering is Disable:The 2.4G SSID is: CLARO1\_< last 6 characters of MAC>, The 5G SSID is CLARO2\_<last 6 characters of MAC>;

If you want to set the SSID and password in Band steering mode, please follow the steps below.

- 1 Choose **WLAN >Band Steering**
- 2 Set **Enabl**d/Disable or **Change SSID/Password**
- 3 Click **Aplicar cambios**.

Estado

LAN

WLAN

Servicios

WAN

Avance

Diagnóstico

Estadísticas

Modo De Operación

Admin

WLAN (5G)

WLAN (2.4G)

Band Steering

> Band Steering Setting

Easy Mesh

Band Steering Ajustes

Esta página se utiliza para configurar la dirección de banda, SSID, contraseña y RSSI.

Wireless Management

Band Steering

☒ Enabled ☐ Disabled

SSID Name

CLARO\_AE3E8B

Password

.....

☐ Show Password

WiFi Rssi

2.4GHz to 5GHz WiFi RSSI

-60

5GHz to 2.4GHz WiFi RSSI

-80

Aplicar cambios

## Step 5: Create a mesh network

- ❶ Factory reset the Controller and agents before you want create a new network.
- ❷ Create a mesh network by wireless: First press the controller's WPS button, then press the agent's WPS button. At this time, the indicator lights of both devices will flash, indicating the start of networking, when the LED always on, it shows connect successfully.
- ❸ Create a mesh network by wired: Take a network cable, connect the LAN port of the controller device and the other end to the WAN port of the agent, when the LED always on, it shows connect successfully.

## Step 6: Automatically switch between controller and agent

- ❶ Factory reset the Controller and agents if you want to change the controller and agent modes of devices.
- ❷ After connecting to the optical modem or higher-level router, if there is a network, the device will automatically switch to controller.
- ❸ After connecting to the controller device through wired or wireless networking, the device will automatically switch to an agent.

## Step 7: APP Instructions

### ❶ APP Download Instructions

You can scan the QR code on the label of device to download the APP, Or you can do as following:

Google: Open the Google Play Store - search for "Jezetek home" and find the corresponding APP to download and install.

iOS: Open the App Store - search for "Jezetek home", find the corresponding APP to download and install.

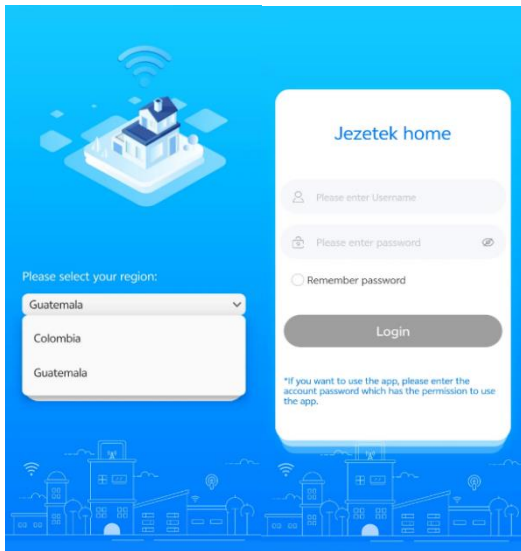
The APP icon is shown below:



### ❷ APP Region Selection

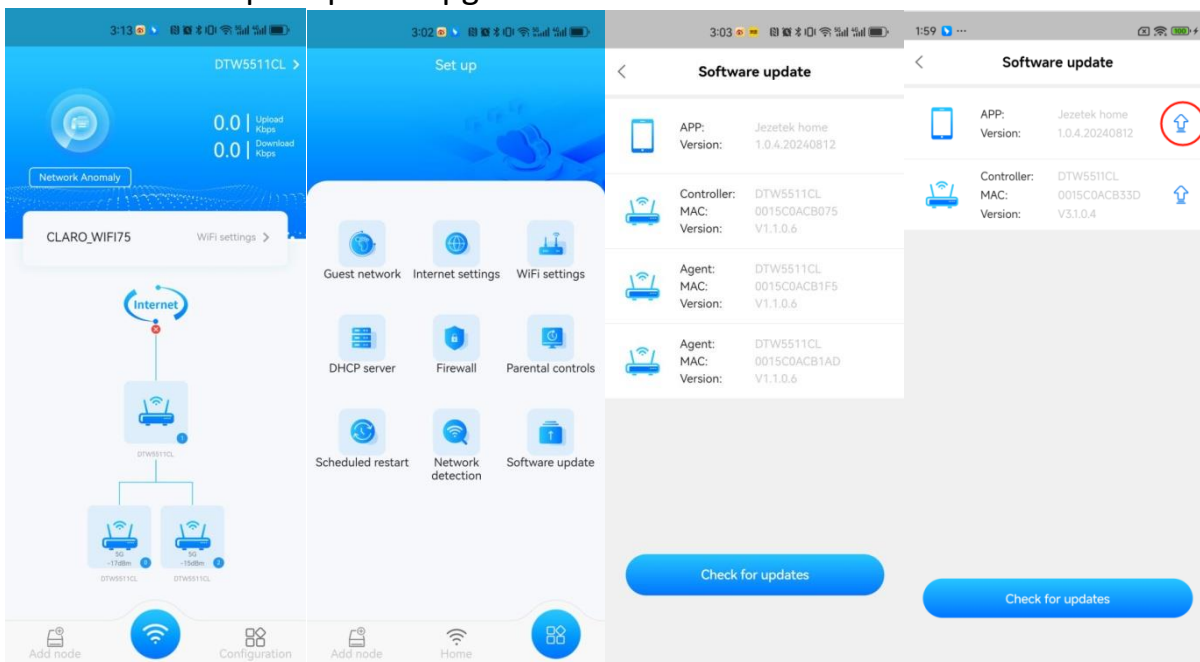
Open the APP, select **Guatemala**, and click the button to enter the next page. As shown in the following figure;

Enter the account password for the APP usage permission, **Account: admin, Password: admin123456**



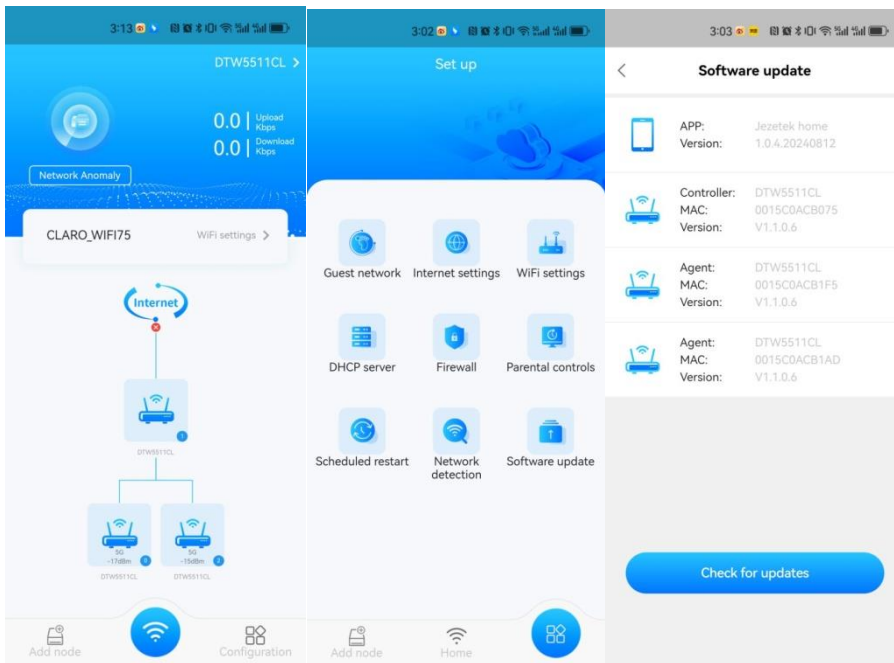
## Step 8: APP Upgrade

Enter into APP, Choose **configuration**, choose **software update**, Click **check for updates**. If there is a new version, the APP version will show a upgrade icon, Click the icon, then follow the prompts to upgrade.

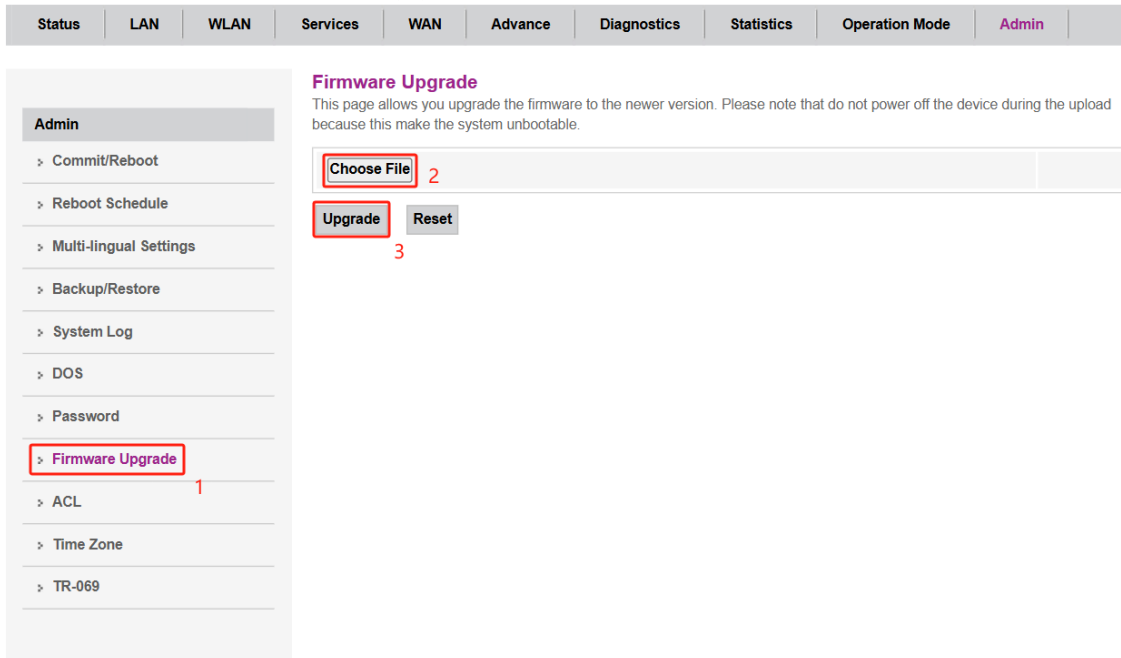


## Step 9: Firmware Upgrade

**1** By APP upgrade: Enter into APP, Choose **configuration**, choose **software update**, Click **check for updates**. If there is a new version, the APP will prompt user to upgrade new firmware. Please follow the prompts to upgrade.



**2** By Web upgrade: log in to web UI, Choose **admin**, choose **Firmware Upgrade**, choose the new version. Then Click **Upgrade**.



## Step 10: Set Router or Bridge mode

Normally no special settings are required to access the Internet, but if you want change setting you can do as following.

- 1** Choose **Mode De Operación**
- 2** Choose **Ajustes del modo de operación**, You can change the router or bridge mode.
- 3** Click **Aplicar cambios**.



Estado	LAN	WLAN	Servicios	Avance	Diagnóstico	Estadísticas	Modo De Operación	Admin
--------	-----	------	-----------	--------	-------------	--------------	-------------------	-------

Modo de operación

> Ajuste del modo de operación

**Modo de operación**  
 Esta página muestra el estado del modo de funcionamiento actual del dispositivo.

Modo de operación:
 ☐ Enrutador
 ☒ Puente

Aplicar cambios

## FAQ

● **Q1:** I cannot log in to the web UI of the router. What should I do?

**A1:** Try the following solutions:

1. If you are using a WiFi-enabled device, such as a smartphone:- Ensure that it connects to the WiFi network of the router.- Ensure that the cellular network (mobile data) of the smartphone is disabled.
2. If you are using a wired device, such as a computer:- Ensure that **https://192.168.80.1** is entered correctly in the address bar. Ensure that the computer is connected to a LAN port (1or2) of the router properly using an Ethernet cable.- Ensure that the computer is set to obtain an IP address automatically and obtain DNS server address automatically. If the problem persists, reset the router, and try again.

● **Q2:** I cannot access the internet after the configuration. What should do?

**A2:** Try the following solutions:

1. Check whether the WAN port of the router is connected to a modem or Ethernet jack properly.
2. If the problem persists, try the following solutions:  
 -For WiFi-enabled devices, check whether your WiFi-enable devices are connected to the WiFi network of the router.  
 -For wired devices:- Check whether your wired devices are connected to a LAN port (1, 2 or IPTV/3)properly.  
 -Check whether wired devices are set to obtain an IP address automatically and obtain DNS server address automatically.

● **Q3:** How to reset the router?

**A3:** When the router is working normally, hold down the RST button for about 7 seconds and release it when the LED indicator blinks fast. The router is reset.

## Safety Precautions

Before performing an operation, read the operation instructions and precautions to be taken, and follow them to prevent accidents. The warning and danger items in other documents do not cover all the safety precautions that must be followed. They are only supplementary information, and the installation and maintenance personnel need to understand the basic safety precautions to be taken.

- For desktop mounting, the device must be horizontally Device ally mounted for safe use.
- Do not use the device in a place where wireless devices are not allowed.
- Please use the included power adapter.
- Mains plug is used as the disconnect device, and shall remain readily operable.
- The power socket shall be installed near the device and easily accessible.
- Operating environment: Temperature:-5 °C to 45 °C ; Humidity: (10% - 95%) RH, non-condensing;
- Keep the device away from water, fire, high electric field, high magnetic field, and inflammable and explosive items.
- Unplug this device and disconnect all cables during lightning storms or when the device is unused for long periods.
- Do not use the power adapter if its plug or cord is damaged.
- If such phenomena as smoke, abnormal sound or smell appear when you use the device, immediately stop using it and disconnect its power supply, unplug all connected cables, and Device act the after-sales service personnel.
- Disassembling or modifying the device or its accessories without authorization voids the warranty, and might cause safety hazards.

## **FCC Statement**

This device complies with Part 15 of the FCC Rules. Operation is subject to the following two conditions: (1) This device may not cause harmful interference, and (2) this device must accept any interference received, including interference that may cause undesired operation.

This equipment has been tested and found to comply with the limits for a Class B digital device, pursuant to Part 15 of the FCC Rules. These limits are designed to provide reasonable protection against harmful interference in a residential installation. This equipment generates, uses and can radiate radio frequency energy and, if not installed and used in accordance with the instructions, may cause harmful interference to radio communications. However, there is no guarantee that interference will not occur in a particular installation. If this equipment does cause harmful interference to radio or television reception, which can be determined by turning the equipment off and on, the user is encouraged to try to correct the interference by one of the following measures:

- Reorient or relocate the receiving antenna.
- Increase the separation between the equipment and receiver.
- Connect the equipment into an outlet on a circuit different from that to which the receiver is connected.
- Consult the dealer or an experienced radio/TV technician for help.

FCC Caution: Any changes or modifications not expressly approved by the party responsible for compliance could void the user's authority to operate this equipment.

This transmitter must not be co-located or operating in conjunction with any other antenna or transmitter.

#### Radiation Exposure Statement:

The device has been evaluated to meet general RF exposure requirements.

To maintain compliance with RF exposure requirement, use product that maintain a 20cm distance between the device and human body.

#### FOR COUNTRY CODE SELECTION USAGE (WLAN DEVICES)

Note: The country code selection is for non-US model only and is not available to all US model.

Per FCC regulation, all WiFi product marketed in US must fixed to US operation channels only.