

FCC Statement

This equipment has been tested and found to comply with the limits for a Class B digital device, pursuant to Part 15 of the FCC Rules. These limits are designed to provide reasonable protection against harmful interference in a residential installation. This equipment generates uses and can radiate radio frequency energy and, if not installed and used in accordance with the instructions, may cause harmful interference to radio communications. However, there is no guarantee that interference will not occur in a particular installation. If this equipment does cause harmful interference to radio or television reception, which can be determined by turning the equipment off and on, the user is encouraged to try to correct the interference by one or more of the following measures:

- Reorient or relocate the receiving antenna.
- Increase the separation between the equipment and receiver.
- Connect the equipment into an outlet on a circuit different from that to which the receiver is connected.
- Consult the dealer or an experienced radio/TV technician for help.

This device complies with part 15 of the FCC Rules. Operation is subject to the following two conditions:(1) This device may not cause harmful interference, and (2) this device must accept any interference received, including interference that may cause undesired operation.

Changes or modifications not expressly approved by the party responsible for compliance could void the user's authority to operate the equipment.

Warning on Safety



The voltage of this player is AC 120V and safe voltage ranges from 180 V to 240 V. Otherwise, the player will be damaged or can't be used. There is no part that can be repaired by a user inside the player. Ask a qualified technician for maintenance. Don't make this player wet by rain to prevent fire or electric shock. Don't open the cover of this player to reduce the danger of electric shock from "dangerous voltage."

★ Please observe above safety suggestions. In case of malfunction, please pull plug out of socket and contact your distributor.

(The specification of a product can be changed without any further notice)



FM Radio/Bluetooth/USB/SD/Recording Rechargeble



MODEL:S7

Please read this manual carefully before installing and operating. Keep this manual for further reference.

Important safety measure

When you go out

■ Pull its plug out of socket even if the play that is still connected to AC power supply is in the state of stop.

To protect the surface of this player

■ Don't spray insecticide near this player. Also don't use gasoline or banana water or other solvent to clean because this kind of solution will cause discolor to the surface of this player. Use soft cloth to get rid of dust. For a chemical detergent, please use according to its instructions.

To prevent humidity, water and dust

■ Don't put this player in a place with high humidity or much dust. A vase or other object with water should not be put over this player.

Don't dismantle this player

■ It is dangerous to open the top cover and the back of this player or put hands into the player. Don't dismantle this player. In case of malfunction, pull plug out of socket immediately and contact your distributor or ask a professional for help.

To prevent high temperature

■ Don't expose this player to sun or put it near heat-sending equipment.

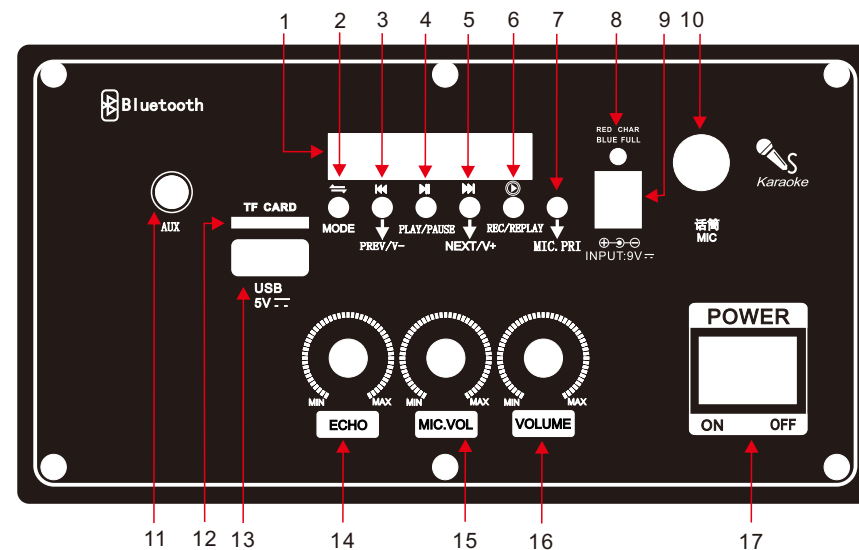
To remove plug

■ Pull plug out of socket instead of grasping cable.

Remote control function

- 1 Power on/off button
- 2 Mode select button
- 3 Numbered button
- 4 Mute on/off button
- 5 EQ button
- 6 Repeat plat button
- 7 In the condition of radio automatic search for radio.
- 8 Prev track button,(In the FM mode it is a Prev channel button)
- 9 Next track button,(Inthe FM mode it is a Next channel button)
- 10 This button for when playing music: play/pause
- 11 Master volume up/down button

Front panel function



- 1 . LED display, display the current status.
- 2 . Mode select button.
- 3 . Prev track button,(Inthe FM mode it a Prev channel button).
- 4 . This button to play/pause button.
- 5 . Next track button,(Inthe FM mode it a Next channel button).
- 6 . Recording and playback function keys.
- 7 . Recording and playback function keys.
- 8 . Charging indicator light, red light, on the charging full of bright blue light.
- 9 . The charging interface.
- 10 . Wired microphone input pin.
- 11 . An external audio source input.
- 12 . TF card socket.
- 13 . Insert the USB interface.
- 14 . The karaoke reverberation, the volume knob to adjust volume.
- 15 . The karaoke main volume knob, adjust the volume.
- 16 . The main volume control knob.
- 17 . The power switch..

Using the Wired Microphone

You can connect the wired microphone to this unit using the MIC INPUT located on the rear panel of the unit.

1. Turn on the unit.
2. Connect your wired microphone to the MIC INPUT located at the rear panel of the unit.
3. Adjust the microphone volume by tuning the MIC VOL/ECHO knobs located at the rear panel of the unit.

NOTES: You can use the wired microphone and wireless microphone at the same time.

BLUETOOTH playback

You can connect your Bluetooth phone or other device to the PA speaker.

1. Turn on the unit.
2. Press the MODE button which is located on top control panel.
3. The Bluetooth is on when unit screen show BT word.
4. Use your Bluetooth phone or other device to search for the PA speaker.

It will displayed as S7.

5. Connect your devices with REX12, it will pair with unit automatically.

6. You do not need code and get connected with unit.

7. Play music on your phone or device, sound will come from the speaker through the BLUETOOTH wireless connection.

8. You can use the VOLUME/BASS/TREBLE to adjust the sound level for BLUETOOTH, also you can adjust the Bluetooth music sound through your own phone or other device.

NOTES: If there is no sound through the PA speaker during Bluetooth, Check the volume controller both on the unit and on your phone or other device.

USB/SD Card Playback

You can play music from USB stick or SD Card using the USB/SD slot on the PA speaker.

1. Turn on the unit.
2. Insert your USB or SD card into the slot.
3. Once inserted the USB or SD card unit will automatically play.
4. You can use the PRE/NEXT/PLAY/PAUSE to control and play music.

NOTES: The speaker system can play the following audio file formats: MP3, The USB/SD Card no more than 32GB. Operation may be slower when searching large memory files. It will need several seconds to respond when your USB/SD Card full of contents.