

Paralenz®

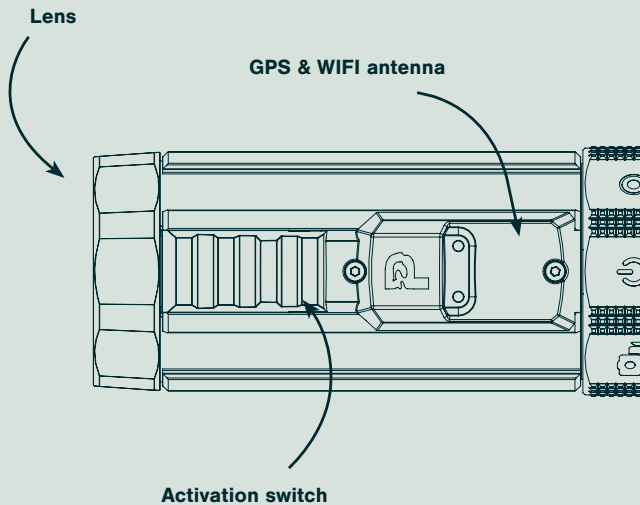


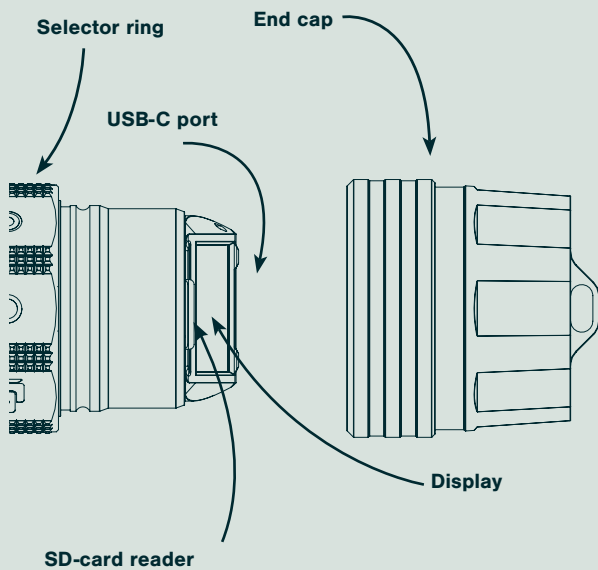
Quick Start Guide

www.paralenz.com

The Vaquita

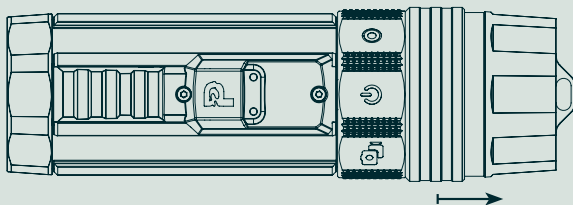
The Vaquita camera is a great addition to your dive, no matter what kind of diver you are.



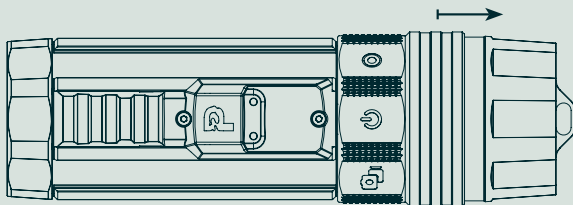


Getting started

Here we present some of the things you need to know, to safely get started with your brand new Paralenz camera.



Pull back and hold



The end cap

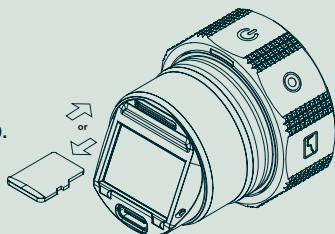
The first thing to know about the Vaquita camera is; how to take off the protective end cap for charging or handling the SD-card.

As pictured on the illustrations above, you need to pull back the “collar” on the end cap, to get it off. While holding this back, you will be able to pull off the end cap.

The same mechanism is used when you put the end-cap back on. Pull back the “collar”, push it back on.


SD-Card

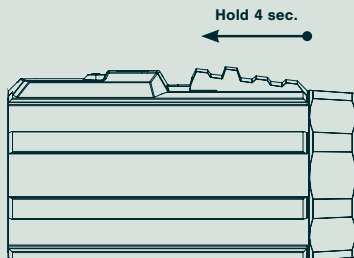
Remove the end cap and insert a micro SD-card. **It must be a Sandisk card with class U3 or V30.**



A capacity of **32 GB** or more is recommended. A full memory card is as useful as no memory card! Make sure to empty the SD-card after each export.

Turn on camera

Select the power icon  on the selector ring and hold the activation switch for 4 sec. To turn off again hold for 4 sec. while on Power mode.



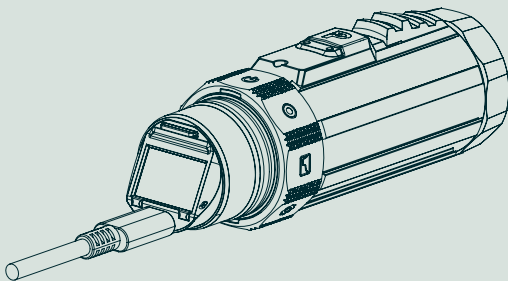


Select mode

Turn the selector ring so the icon of your desired mode is facing upwards. You can choose between the following; Power, Snap, Video, Custom I, Custom II, Settings, Dive Logs, and Location.

Battery & charging

Use an USB-C to USB-A charger that can deliver 2.1A for fast charging. Make sure the battery is charged before you enter the water. Maintain the camera battery by charging it every second month, if not in use.

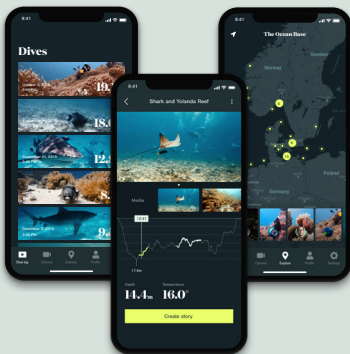


Latest update

Make sure to always have the latest firmware installed on the camera. Firmware updates are made through the Paralenz App or manually downloaded from our website.

The Paralenz App

Unlock your camera's full potential with the free Paralenz App. Access and organize your dive footage in the media library and dive log, edit your recordings smoothly, and share your highlights with other Ocean lovers and marine scientists worldwide.



The free Paralenz App makes downloading, sharing and viewing your photos and recordings easy. Download the app via App Store or Google Play. The app will guide you through the connection process. Note that you can also update the camera firmware through the app.

Camera firmware updates

Firmware updates are made through the Paralenz App. The app will give a notification when a new update is available.

Camera features

The camera features spoken about here, are the seven icons on the selector ring.



Snap

To take pictures select the photo & snap record icon on the selector ring, and the camera will confirm with vibration. Click once on the activation switch to take a photo. If you want to record a short video hold the activation switch. As long as you are holding it, you record video. Release the switch to end recording.



Video

To record a video select the video mode on the selector ring, and the camera will confirm with vibration. To start recording hold the activation switch for 1 sec. To stop recording hold for 1 sec.



Custom I & Custom II

For each custom icon, you can choose a custom mode setting (it is done under the respective Custom menu in the settings). You can choose between: Timelapse, Burst, Slow Motion, Video, and Snap.

- Timelapse works by taking pictures at a set interval resulting in a video where time seem to move faster.
- Burst works by continuously shooting photos in quick succession.

- Slow Motion is operated like Video, but the videos recorded will be in Slow Motion. This mode restricts the maximum resolution of the video.
- Video is operated like the regular Video mode, but with custom settings
- Snap Record is operated like the regular Snap Record mode, but with custom settings.



Settings

In the settings you can change resolution, frames per second, turn Wi-Fi on/off and choose your custom mode. Click one to move to the next menu point. Hold it to enter and confirm. See the Main Manual for more information.



Dive log

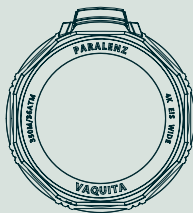
In this mode you can view your dives and their corresponding data, arranged by date. You can either view the dive highlights by holding the button and selecting 'Dive Info', or view an animation of the entire dive by choosing 'View Dive'.



Location

Locks your dive position - for more information see the Main Manual.

Maintenance



Cleaning the camera

We recommend to rinse the camera in fresh, warm water, while working the ring and switch. Also - no solvents/chemicals should be used while cleaning. If sand grains should get stuck underneath the magnetic switches please contact our support for instructions.

Cleaning the o-rings

Check that the o-rings have not been stretched and that they do not have any cuts, tears and dirt (hair, dust). To lubricate the o-rings apply a thin layer of grease and run them through your fingers while gently rubbing the grease into the o-ring (do not use spray lubricant or petroleum based grease).

Cleaning the lens

All waters looks murky with a dirty lens! Make sure your lens is clean and has no scratches. To clean the lens, wipe it with a soft, lint-free cloth. You can use Eyeglass Cleaning Fluid – but do not use strong solvents such as benzene or alcohol.

How do I prevent the camera from flooding?

The triple o-rings are tested to 250 m/820 ft./26 ATM. , so as long as you properly maintain the o-rings and don't open the camera below water you should be fine. Remember to put on the end cap correctly.

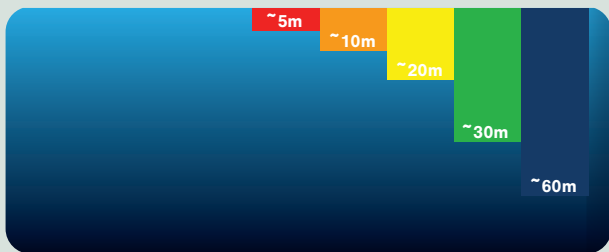
DCC

Depth Color Correction

What is DCC?

DCC stands for Depth Color Correction and is a digital version of a color filter, which are normally made from plastic and placed in front of your camera lens, to remove the green or blue taint in your videos.

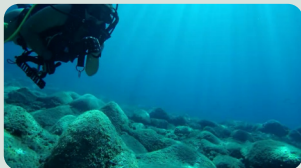
DCC is controlled by the pressure sensor. Every second it adjusts the strength of the color correction to match the depth you are at. It cannot add colors that are not present, but it can make better use of the colors that are.



*Here you see at which depth the different colors gets absorbed
– red is the first color to disappear.*

How to use DCC?

When using DCC instead of a plastic color filter, the footage will have better colors and be sharper and brighter.



*Video recorded with DCC off
(WB 5000K).*



Video recorded with DCC on.

DCC has two settings – blue or green:

Use blue for  blue water

Use green for  green water



Use blue for blue water.



Use green for green water.

How to activate DCC?

Toggle DCC on/off by clicking three times on the activation switch while in power- or video-mode. Choose blue or green in DCC settings.

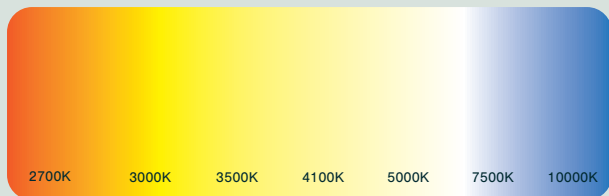


IMPORTANT: Do not use dive lights together with the DCC – this will discolor the image.

WB - white balance

What is WB?

WB stands for White Balance, which adjusts the color temperature. Color temperature is measured in Kelvin (K) and ranges from the warm orange glow of a match 1500K to the light on a clear day with a blue sky 10.000K.



How to activate WB?

To toggle between the WB (when diving with lights) and the DCC (when diving without lights), click the activation switch fast 3 times. The display will show which mode is active. You will also be able to see which mode is active in the standby screen.



IMPORTANT: For the best results use the WB only when you dive with lights on.

Before your next dive

Check your camera in advance of your next dive!

- Does your camera turn on and off without problems? Sweet.
- Do the selector ring and the activation switch move effortlessly? Great.
- Can you do a short recording and snap a picture without any issue? Awesome.
- Does that recording look fine without any disturbances in the image quality? Perfect.
- Have you updated your camera with the newest firmware and updated your Paralenz App? Congrats, your camera is ready!

What should I do if I notice something is not working?

If you notice something out of the ordinary, please contact our support at support@paralenz.com

Often, we can give you simple, guided instructions on how to fix smaller problems yourself. However, there might be cases where we would need you to send your camera to us, so we can have a look and fix it here.



IMPORTANT: Don't open up your camera and try to fix it yourself without guidance from our support team. Unguided maintenance can lead to broken parts, which can further lead to the camera flooding on your next trip.

This is why it is important that you check your camera in advance of your next trip, so we can make sure to handle the repair and shipment of your camera on time.

Warnings

When overheated the camera will shut down!

The Vaquita camera is primarily made for underwater use. If the camera is used above water there is a risk of it overheating which will result in the camera shutting down until the temperature is stabilized.

Working temperature

The battery should be used in a temperature range from 14° to 104° F (-10° to 40° C). Use of the battery in an environment above 104° F (40° C) can lead to a fire or explosion. Use of the battery below 14° F (-10° C) can lead to permanent damage.

Battery is recommended to be charged at room temperature

DO NOT charge the battery until it cools down to near room temperature. Charging the battery outside of the temperature range of 41° to 104° F (5 to 40°C) may lead to leakage, overheating, or battery damage.

Battery precautions

- Avoid replacement with a battery of an incorrect type.
- Don't dispose of a battery into fire or a hot oven, or mechanically crushing or cutting of the battery.
- Don't leave the battery in an extremely high temperature environment.
- Avoid the battery being subject to extremely low air pressure.

FCC Statement

Warning: Changes or modifications to this unit not expressly approved by the party responsible for compliance could void the user's authority to operate the equipment.

NOTE: This equipment has been tested and found to comply with the limits for a Class B digital device, pursuant to Part 15 of the FCC Rules. These limits are designed to provide reasonable protection against harmful interference in a residential installation. This equipment generates, uses and can radiate radio frequency energy and, if not installed and used in accordance with the instructions, may cause harmful interference to radio communications.

However, there is no guarantee that interference will not occur in a particular installation. If this equipment does cause harmful interference to radio or television reception, which can be determined by turning the equipment off and on, the user is encouraged to try to correct the interference by one or more of the following measures:

- Reorient or relocate the receiving antenna.
- Increase the separation between the equipment and receiver.
- Connect the equipment into an outlet on a circuit different from that to which the receiver is connected.
- Consult the dealer or an experienced radio/TV technician for help

The device must not be co-located or operating in conjunction with any other antenna or transmitter.

This device complies with Part 15 of the FCC Rules. Operation is subject to the following two conditions : (1) this device may not cause harmful interference, and (2) this device must accept any interference received, including interference that may cause undesired operation.

This device complies with FCC's radiation exposure limits set forth for an uncontrolled environment.

IC Statement

This device complies with RSS247 of Industry Canada. Cet appareil se conforme à RSS247 de Canada d'Industrie. This device complies with Industry Canada license-exempt RSS standard(s). Operation is subject to the following two conditions: (1) this device may not cause interference, and (2) this device must accept any interference, including interference that may cause undesired operation of the device. appareils radio exempts de licence. Son fonctionnement est sujet aux deux conditions suivantes: (1) le dispositif ne doit pas produire de brouillage préjudiciable, et (2) ce dispositif doit accepter tout brouillage reçu, y compris un brouillage susceptible de provoquer un fonctionnement indésirable.

The device must not be co-located or operating in conjunction with any other antenna or transmitter.

Radiation Exposure Statement: The product comply with the Canada portableRF exposure limit set forth for an uncontrolled environment and are safe for intended operation as described in this manual.

Déclaration d'exposition aux radiations : Le produit est conforme aux limites d'exposition pour les appareils portableRF pour les Etats-Unis et le Canada établies pour un environnement non contrôlé.

This device complies with FCC and IC radiation exposure limits set forth for an uncontrolled environment.

Cet appareil est conforme aux limites d'exposition aux rayonnements de la FCC et de l'IC établies pour un incontrôlé environnement.

SAR

This device meets the government's requirements for exposure to radio waves. This device is designed and manufactured not to exceed the emission limits for exposure to radio frequency (RF) energy set by the Federal Communications Commission of the U.S. Government.

The exposure standard for wireless devices employs a unit of measurement known as the Specific Absorption Rate, or SAR. The SAR limit set by the FCC is 1.6 W/kg. Tests for SAR are conducted using standard operating positions accepted by the FCC with the device transmitting at its highest certified power level in all tested frequency bands.

Although the SAR is determined at the highest certified power level, the actual SAR level of the device while operating can be well below the maximum value. This is because the device is designed to operate at multiple power levels so as to use only the power required to reach the network.

In general, the closer you are to a wireless base station antenna, the lower the power output. While there may be differences between the SAR levels of various devices and at various positions, they all meet the government requirement.

Designed & developed in Denmark - tested all over the world

The feedback and requests we receive from divers and other Ocean lovers all over the world is the basis of every improvements we make. Whether it is deciding to add a camera feature, changing the packaging or developing a new accessory, our product development is guided by you.

Join Paralenz World on Facebook

We at Paralenz love the enthusiasm and commitment in the diving community. This is why we have made the Paralenz World Facebook group for you to share your dives, get tips and tricks, and connect with us and other Paralenz users.

Recycling



This product bears the selective sorting symbol for Waste electrical and electronics equipment (WEEE). This means that this product must be handled pursuant to European directive 2012/19/EU in order to be recycled or dismantled to minimize its impact on the environment. User has the choice to give the product to a competent recycling organization or to the retailer when he buys a new electrical or electronic equipment.



The entire **Quick Start Guide**
can be found here:

support.paralenz.com