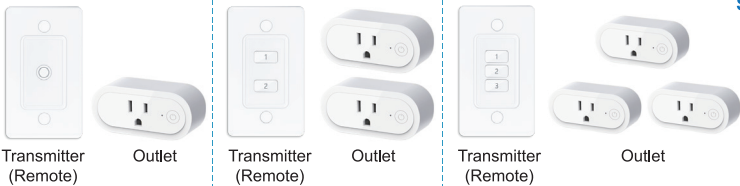




Wireless Outlet User Guide



Scan the QR Code for Video Instructions



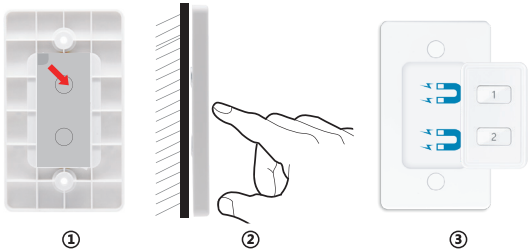
If you have any questions about installation and use, please email us at support@loratap.com

Technical Specifications

Outlet	
Input Voltage	100 - 250VAC
Output Voltage	100 - 250VAC
Maximum Load	16A
Operating Temperature	-13°F ~ 122°F (-25°C ~ 50°C)

Transmitter installation

1. Tear off the adhesive tape on the back of the wall plate.
2. Stick the wall plate to the wall by adhesive tape.
3. Attach the transmitter on the wall plate by magnetic force.



Operation

- Plug the receiver into a 120V AC electrical outlet.
- To test, plug an electrical device like a lamp into the receiver's outlet located at the bottom of the unit. Make sure that your electrical device is powered ON.
- On the transmitter switch, push the button in the middle to turn the device ON or OFF.

Manual Override: You can manually power the unit ON/OFF by pressing the ON/OFF override button located on the side of the Receiver. (Do not hold the button down for manual ON/OFF operation as this will cause the unit to enter the pairing mode.)

TROUBLESHOOTING

The wireless switch receiver does not turn on

- Make sure the unit is securely plugged into an AC power outlet.
- Unplug the unit for a moment, and then plug it back in again.
- Check the outlet by plugging in another device.

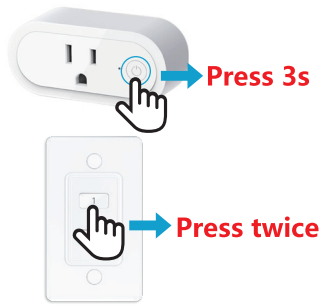
The remote transmitter does not work

- Make sure the battery is fresh.
- Move the transmitter closer to the receiver. Actual operational distance will vary based on walls, obstructions and other nearby electronic devices.
- Re-pair the transmitter to the receiver.

Please be advised that the products in the set are pre-paired during manufacturing. In most cases, customers do not need to re-pair the new product upon receipt and can use it directly.

Pairing

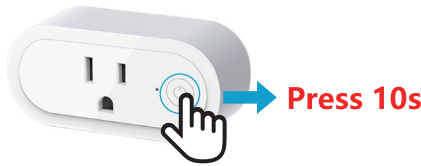
- Press and hold the ON/OFF button on the receiver for 3 seconds. The LED indicator will begin to flash slowly.
- Press the transmitter button twice.



- 5/EN英语 -

To un-pair

- Press and hold the ON/OFF button on the receiver for 10 seconds. The LED indicator will begin to flash rapidly.
- The un-pairing procedure will un-pair all transmitters from that receiver.



Battery replacement

Remove screws on the back of the transmitter. It uses a CR2032 battery.

- 6/EN英语 -

Model No: SP7513Q1-US-V3
SKU: SP511Q1-US-1GANG/SP7512Q1-V3-US/SP7513Q1-V3-US
FCC ID: FCC ID: 2AL7S-SP7513Q1
Email: support@loratap.com
Manufacturer:
Shenzhen QianChuan Smart Technology Co., Ltd.
Address: 2/F, Bldg #13, Wangtang Industrial park, Xinwei Village, Xili Str., Nanshan District Shenzhen 518000, China



FCC Caution.

This device complies with part 15 of the FCC Rules. Operation is subject to the following two conditions:
(1) This device may not cause harmful interference, and (2) this device must accept any interference received, including interference that may cause undesired operation.
Any Changes or modifications not expressly approved by the party responsible for compliance could void the user's authority to operate the equipment.

- 7/EN英语 -

Note: This equipment has been tested and found to comply with the limits for a Class B digital device, pursuant to part 15 of the FCC Rules. These limits are designed to provide reasonable protection against harmful interference in a residential installation. This equipment generates uses and can radiate radio frequency energy and, if not installed and used in accordance with the instructions, may cause harmful interference to radio communications. However, there is no guarantee that interference will not occur in a particular installation. If this equipment does cause harmful interference to radio or television reception, which can be determined by turning the equipment off and on, the user is encouraged to try to correct the interference by one or more of the following measures:
-Reorient or relocate the receiving antenna.
-Increase the separation between the equipment and receiver.
-Connect the equipment into an outlet on a circuit different from that to which the receiver is connected.
-Consult the dealer or an experienced radio/TV technician for help.
***RF warning for Portable device:**
The device has been evaluated to meet general RF exposure requirement. The device can be used in portable exposure condition without restriction.

- 8/EN英语 -

⚠ WARNING

- **INGESTION HAZARD:** This product contains a button cell or coin battery.
- **DEATH:** or serious injury can occur if ingested.
- A swallowed button cell or coin battery can cause **Internal Chemical Burns** in as little as **2 hours**.
- **KEEP** new and used batteries **OUT OF REACH** of **CHILDREN**. **Seek immediate medical attention** if a battery is suspected to
- be swallowed or inserted inside any part of the body.



- 9/EN英语 -