

Light Bulb Socket User Guide



If you have any questions regarding installation and use, please contact us via the email address on the after-sales card.

1.0

- 1/EN英语 -

130

Attention! (Troubleshooting!)

1. Ensure your device and WiFi router are in the same room, and avoid placing the device in a metal box to prevent signal interference.
2. Confirm that the Smart Life APP is updated to the latest version and that network and location permissions are enabled.
3. Connect your phone to a 2.4GHz WiFi network (not 5GHz). If using a dual-band router, separate the 2.4GHz and 5GHz bands to ensure a dedicated 2.4GHz connection for the device.
4. If your router's security is too high, it may prevent the device from connecting to the network. Set the security to WPA/WPA2 for proper connection.
5. If the device still can't connect, try using another phone's "personal hotspot" (2.4GHz) as a router to troubleshoot the WiFi network.
6. If the issue persists, email us and we'll respond within 24 hours.

- 2/EN英语 -

Control Device with Phone App

Note: Due to the app's upgrade and updates, the steps may vary slightly. Please follow the current instructions in the Smart Life App.

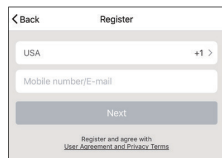
1. Download the Smart Life App

Please scan the QR code, or download the Smart Life app (provided by Volcano Technology Limited) from App Store, Google Play or Android Market.



2. Register

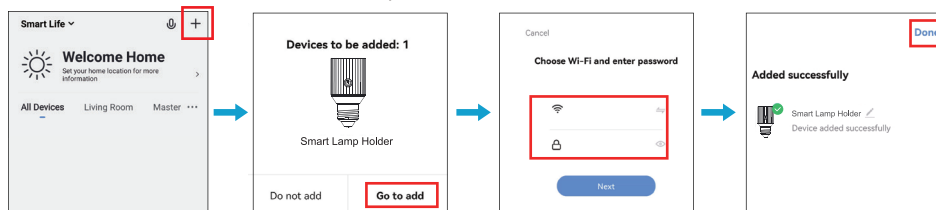
Open the Smart Life app, tap "Register" to register an account, then sign in to the app.



- 3/EN英语 -

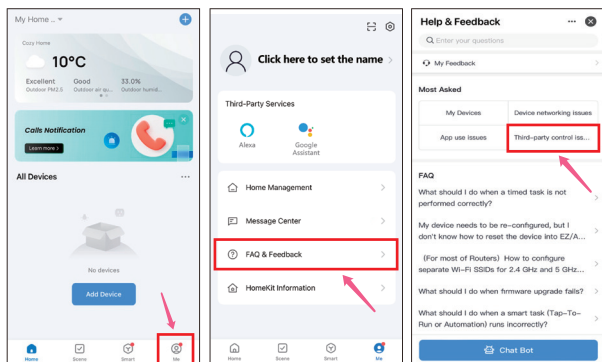
3. Add device

- A. Please turn on the Bluetooth on your cell phone, and enter the main interface of Smart Life App.
- B. Make sure the light socket is powered on, press the pairing button for **5 seconds** until the indicator light flashes, and then release it.
- C. Smart Life App will automatically scan all the devices in pairing mode, and then select the device you want to add. Enter your Wi-Fi name and password, it will connect the Wi-Fi device automatically.



- 4/EN英语 -

For information on how to use Google Assistant and Alexa Echo to control smart devices, please refer to the [FAQ](#) guidelines in the Smart Life app.



- 5/EN英语 -

- Voice Control

You need to control the device with commands like:

- Alexa, turn on the [device name]
- Alexa, turn off the [device name]

- Specification

Wi-Fi Frequency	2.4GHz
Wi-Fi Standard	IEEE 802.11 b/g/n
Radio Type	2.4GHz Wi-Fi
Max RF Power Transmitted	17.5 dBm

EU Declaration of Conformity

Hereby, Shenzhen QianChuan Smart Technology Co., Ltd. declares that the radio equipment type Wireless Light Bulb Adapter/Socket is in compliance with Directive 2014/53/EU.

The full text of the EU declaration of conformity is available at the following internet address:
<https://drive.google.com/file/d/1LQBRugqTDGy24JC3l-yhkAarToS0ju/view>

Model No: BA200W

FCC ID: 2AL7S-BA200W

Manufacturer:

Shenzhen QianChuan Smart Technology Co., Ltd.

Address: Floor 6, No.10 South 2nd lane, Jiafu Road, Baihao Village, Houjie Town, Dongguan City, Guangdong, China



- 6/EN英语 -

Made in China

FCC Caution.

This device complies with part 15 of the FCC Rules. Operation is subject to the following two conditions: (1) This device may not cause harmful interference, and (2) this device must accept any interference received, including interference that may cause undesired operation.

Any Changes or modifications not expressly approved by the party responsible for compliance could void the user's authority to operate the equipment.

Note: This equipment has been tested and found to comply with the limits for a Class B digital device, pursuant to part 15 of the FCC Rules. These limits are designed to provide reasonable protection against harmful interference in a residential installation. This equipment generates uses and can radiate radio frequency energy and, if not installed and used in accordance with the instructions, may cause harmful interference to radio communications. However, there is no guarantee that interference will not occur in a particular installation. If this equipment does cause harmful interference to radio or television reception, which can be determined by turning the equipment off and on, the user is encouraged to try to correct the interference by one or more of the following measures:

- 7/EN英语 -

- Reorient or relocate the receiving antenna.
- Increase the separation between the equipment and receiver.
- Connect the equipment into an outlet on a circuit different from that to which the receiver is connected.
- Consult the dealer or an experienced radio/TV technician for help.

*RF warning for Mobile device:

This equipment complies with FCC radiation exposure limits set forth for an uncontrolled environment. This equipment should be installed and operated with minimum distance 20cm between the radiator & your body.

- 8/EN英语 -