

WARNING

- 1. Never play a cracked CD or a CD is NOT clean, that would damage the laser.
- 2. Please remove the protection paper CD from the CD Player before powering on, otherwise, the laser could be damaged.
- 3. Never touch the laser of the device.
- 4. If the device is unable to scan discs properly, use a standard commercially available cleaner to clean the laser optics. Other cleaning methods may damage the laser optics.

Accessories:

- 1. CD player x1
- 2. 5V-2A USB adaptor x1
- 3. Remote control X1
- 4. Wall-mount kit X1
- 5. User manual x1
- 6. Desk stand X1
- 7. Type C cable x1

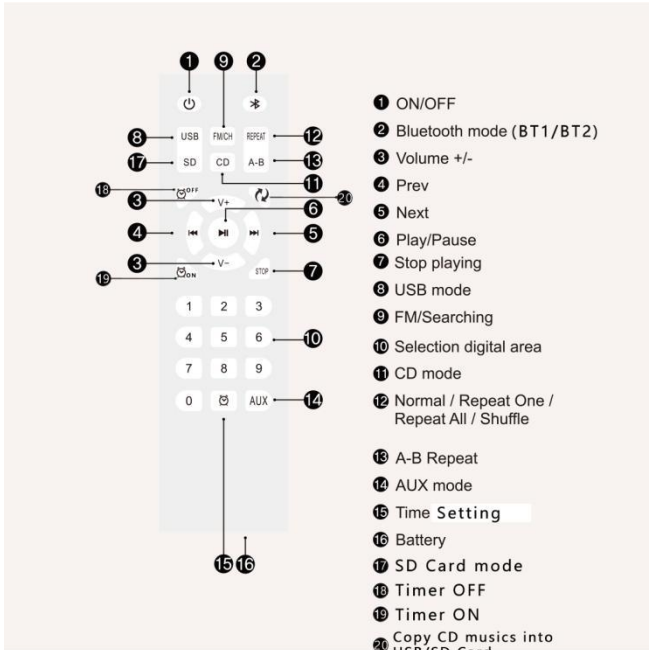
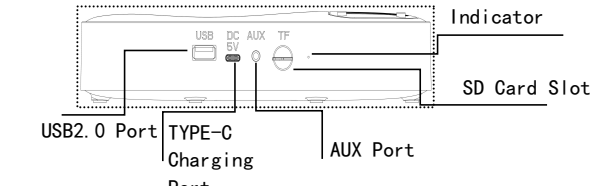
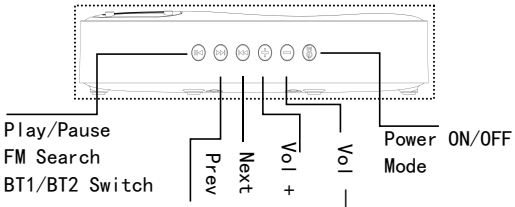
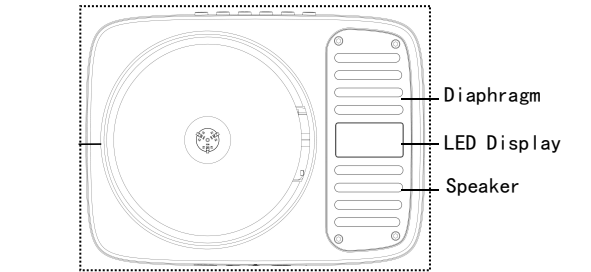
Specifications:

- 1. CD format support CD, CD-R, CD-RW, MP3, WMA, WAV
- 2. FM Radio Range 87.5MHz-108.0MHz
- 3. Speaker: 50mmX2
- 4. Rated impedance: 4Ω
- 5. Speaker output: 3Wx2
- 6. Power supply: AC110-220V, 50Hz/60Hz
- 7. Type C cable length: 2.5m
- 8. Dimension of main unit/package:

- 9. Net weight/Gross weight:
- 10. Color: White

Main Features:

- 1. LED screen display
- 2. USB flash reading/playing
- 3. Micros SD card reading/playing
- 4. Full-band FM radio
- 5. Bluetooth IN/OUT V5.1
- 6. Standard 3.5mm audio input/output port
- 7. Loop Playback modes: Repeat One, Repeat All, Shuffle, Normal
- 8. Support A-B repeat
- 9. Support time and alarm clock
- 10. Copy CD songs into USB/SD Card



Basic Operation

- 2. Remove the protection paper CD from the CD Player before powering on, otherwise, the laser could be damaged.
- 3. Put a CD into the CD Player.
- 1. Plug in the Type C cable to the USB adaptor.
- 4. Keep press “Power ON/OFF” button(on the device) about 3s to power it on, and then it will play the CD in 5-12s.
- 5. Press the “MODE” button(on the device) to switch among 5 modes: “CD”, “USB”, “SD”, “FM”, and “Bluetooth”.

Power On/Off Instructions

- 1. Power On
Keep press “Power ON/OFF” button about 3s to power on the CD Player, the CD Player will play the CD automatically(the Compact Disk must be inserted to the CD Player before turn on).
- 2. Power off
Keep press “Power ON/OFF” button again about 3s to Power off the CD Player. Please do not touch the Compact Disk before turn off the device.

CD Mode Instructions

Press the CD button on the remote to switch to CD mode or switch the “Mode” key(on the device) to CD mode, then the Compact Disk will run automatically

CD Copy/Transcription Mode Instructions

- 1. Press the Copy/Transcription button on the remote, it will copy CD musics into the USB/SD card from the current music time, the blue light will flash.
- 2. Press the Copy/Transcription button again on the remote, it will end the copy, the blue light will stay on.

Bluetooth Mode Instructions

1. BT1 mode

- 1). Press Bluetooth button on the remote to switch to BT1 mode or switch the “Mode”key(on the device) to the BT1 mode, and the Bluetooth icon will appear on the screen, the blue light will flash.
- 2). Activate the Bluetooth in your mobile phone.
- 3). Choose the named “CD” device in your mobile phone Bluetooth device list to pair.
- 4). Your mobile phone will be paired/connected to the CD Player in a few seconds, and the blue light will stay on.
- 5). Playing music on your mobile phone and the audio will be transmitted to the CD Player speaker through Bluetooth.

2. BT2 mode

- 1). When stay on BT1 mode, press Bluetooth button again on the remote to switch to BT2 mode or keep press the “Play/Pause” key(on the device) about 3s to the BT2 mode, then the CD Player will be ready to pair other Bluetooth devices such as bluetooth speaker, bluetooth earphone etc., the blue light will flash.

- 2). Activate the Bluetooth devices such as bluetooth speaker, bluetooth earphone etc., and it will automatically search nearby Bluetooth devices to pair.
- 3). The CD player will be connected to the bluetooth device in a few seconds, it will automatically enter the CD mode, the CD musics will be transmitted to the bluetooth device through Bluetooth, and the blue light will stay on.
- 4). Under the BT2 mode, you can switch to CD/USB/SD/FM/AUX/BT2 mode, then the audio will be transmitted to the bluetooth device through Bluetooth.
- 5). When switch to BT2 mode, you can switch back to BT1 mode by press Bluetooth button again on the remote or keep press the “Play/Pause” key(on the device) about 3s

Note: If the bluetooth device is off, you want to connect to other bluetooth device, first you need switch back to BT1 mode, then switch to BT2 mode again, will automatically search other Bluetooth devices to pair.

FM Mode Instructions

- 1. Press FM/SH button on the remote to switch to FM mode or switch the “Mode”key(on the device) to the FM mode.
- 2. Then the CD Player will play the preset radio station, the “FM” icon will appear on the screen.
- 3. Press FM/SH button again or Keep the “Play/Pause” button(on the device) about 3s to search all radio stations and it will automatically store the first 40 stations if there are such enough stations around; After completed the searching, it will play the first station.
- 4. Press<Prev>or<Next>button to go to previous station pre-stored or next station pre-stored; or press digital keys to change to a certain station pre-stored.

USB Mode Instructions

- 1. Plug in a U-disk to the CD Player USB port.
- 2. Press USB button on the remote to switch to USB mode or switch the “Mode” key(on the device) to the USB mode.
- 3. The CD Player will read and play the music in the U-disk, the “USB” icon will appear on the screen.

Micro SD Mode Instructions

- 1. Insert a Micro SD card to the Micro SD card slot.
- 2. Press SD button on the remote to switch to Micro SD mode or switch the “Mode” Key(on the device) to the Micro SD mode.
- 3. The CD Player will read and play the music in the SD card, the “SD” icon will appear on the screen.

Repeat Function

Press the repeat button on the remote to cycle between playback modes, available playback modes are: “Repeat One”, “Repeat ALL” or “Shuffle play”, and “Normal play”, will appear “ONE”, “ALL”, “SFL” and “OFF” on the screen.

A-B Repeat Function

The A-B Repeat function enables playback to a specific section repeatedly by setting the start point(A) and end point(B) for the section.

1. Press A-B button on the remote to set the start point(A) while playing, and will appear the"A"on the screen.
2. Press A-B button on the remote to set the end point(B) while playing, and will appear the"B"on the screen.
3. Then the specified section from A to B will be played back repeatedly.
4. Press A-B button again to exit AB repeat, and will appear the "OFF" on the screen.
5. Note: A-B Repeat function only works on CD,USB and Micro SD mode

AUX Mode

1. Connect the CD Player to other Audio player devices with the 3.5mmmale-to-male audio cable.
2. Press AUX button on the remote to switch to AUX IN mode or switch the "Mode" key(on the device) to the AUX IN mode, then the audio will be transmitted to the CD Player speaker, and will appear the "AUX" on the screen.

Time Setting

1. Press the "Time Setting" button on the remote, the CD Player will display current time.
2. Long press the "Time Setting" button on the remote to set the time, first set the hour, then press "Next" button to set minute. Press the "V+" and "V-" button to adjust time(hour and minute), finally press the "Play/Pause" button to finish Time Setting.

Timer OFF Setting

1. Press the "Timer OFF" button on the remote, the CD Player will display current timer off.
2. Long press the "Timer OFF" button on the remote to set the time, first set the hour, then press "Next" button to set minute. Press the "V+" and "V-" button to adjust time(hour and minute), finally press the "Play/Pause" button to finish Timer OFF. When the time is same as Timer OFF, the CD player will automatically off.

Timer ON Setting

1. Press the "Timer ON" button on the remote, the CD Player will display current timer on.
2. Long press the "Timer ON" button on the remote to set the time, first set the hour, then press "Next" button to set minute. Press the "V+" and "V-" button to adjust time(hour and minute), finally press the "Play/Pause" button to finish Timer ON. When the time is same as Timer ON, the CD player will automatically on.

Trouble shooting

1. Cannot be turned on.
Reason1: Switch is not turned on.
Solution 1: Please keep press the "Power ON/OFF" button about 3s or if the Type C cable is broken.
Reason 2: The player is damaged.
Solution2: Please contact us or ask a professional for repairs.

2. Cannot read discs.
Reason1: The disc is installed incorrectly.
Solution1: Make sure the label side of the disc is facing up;Ensure the disc is inserted fully into the place.
Reason2: The disc cannot be recognized.
Solution2: The player is only compatible with CD format.
Reason3: The disc is dirty or damaged.
Solution3: Make sure the disc is not heavily scratched or damaged;Wipe the disc gently from the center radially out to the edge with a clean&soft cloth;Try another new disc to check if the disc is faulty.
Reason4: The loader is dirty.
Solution4: Wipe the laser gently with a degreasing cotton swab.
Note: DO NOT TOUCH THE LASER WITH YOUR HANDS.


3. Remote does not work.
Reason1: The insulation sheet is not removed.
Solution 1: Check if the insulation sheet is removed from the battery slot.
Reason2: The remote is out of power.
Solution2: Check if the remote battery is running out.
Reason3: The remote is too far from the CD player.
Solution3: Make sure the remote is in the range of a reasonable distance (within 6 meters).

4. Noisy and screaming when it plays.
Reason1: Usage time of the disk may be too long, so the disk is not smooth.
Solution1: Make sure the disc is not heavily scratched or damaged;Wipe the disc gently from the center radically out to the edge with a clean&soft cloth;Try another new disc to check if the disc is faulty.
Reason2: If there is a"Jiji"sound inside the earphone, it may be caused by scratching of the disc.
Solution2: Please change to another disc, and do not use the old one again to prevent the player from damage.

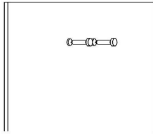
Installation guide

Wall Mounted Guide

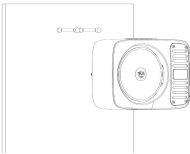
1. Nail 2 expansion bolts into the wall on the table



2. Screw the screw into the expansion bolt on the stand

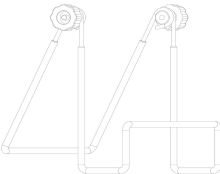


3. Insert the two holes on the back of the CD player into the screws

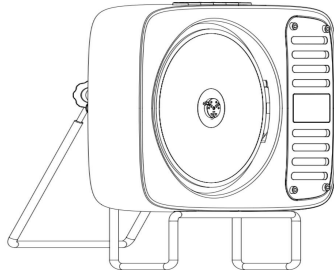


Desk Guild

1. Put the stand

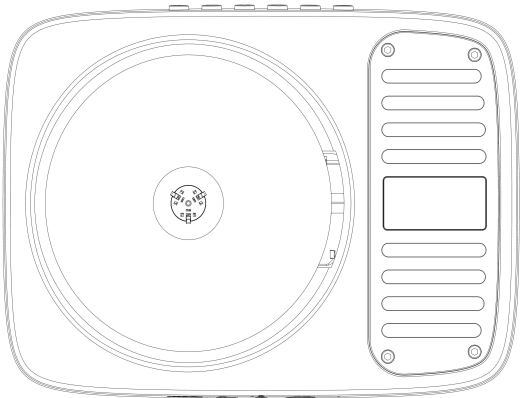


2. Put the CD Player



User Manual

portable
bluetooth CD
player



FCC Caution.

(1) § 15.19 Labelling requirements.

This device complies with part 15 of the FCC Rules. Operation is subject to the following two conditions: (1) This device may not cause harmful interference, and (2) this device must accept any interference received, including interference that may cause undesired operation.

§ 15.21 Changes or modification warning

Any Changes or modifications not expressly approved by the party responsible for compliance could void the user's authority to operate the equipment.

§ 15.105 Information to the user.

Note: This equipment has been tested and found to comply with the limits for a Class B digital device, pursuant to part 15 of the FCC Rules. These limits are designed to provide reasonable protection against harmful interference in a residential installation. This equipment generates uses and can radiate radio frequency energy and, if not installed and used in accordance with the instructions, may cause harmful interference to radio communications. However, there is no guarantee that interference will not occur in a particular installation. If this equipment does cause harmful interference to radio or television reception, which can be determined by turning the equipment off and on, the user is encouraged to try to correct the interference by one or more of the following measures:

- Reorient or relocate the receiving antenna.

- Increase the separation between the equipment and receiver.

- Connect the equipment into an outlet on a circuit different from that to which the receiver is connected.

- Consult the dealer or an experienced radio/TV technician for help.

RF warning for Mobile device:

This equipment complies with FCC radiation exposure limits set forth for an uncontrolled environment. This equipment should be installed and operated with minimum distance 20cm between the radiator & your body.