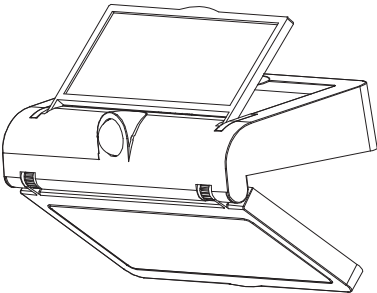


HT 1500L PATH LIGHT

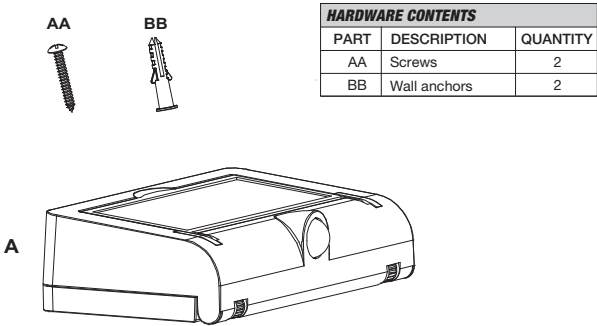
Vendor Stock Number: ZDL1207AHB

Questions, Problems, Missing parts ?
Before returning to the store,
call Walmart’s Customer Service at:
1-833-908-2024



IMPORTANT: Please read this manual carefully and save it for reference.

01 PRODUCT IMAGE



HARDWARE CONTENTS		
PART	DESCRIPTION	QUANTITY
AA	Screws	2
BB	Wall anchors	2

PRODUCT CONTENTS		
PART	DESCRIPTION	QUANTITY
A	Light fixture	1

02 WARNING AND SAFETY INFORMATION

WARNING: Do not dispose of lithium batteries in municipal waste stream or by fire as batteries may explode. Do not open, short circuit, or destroy batteries. Dispose of batteries in accordance with Local, State, and Federal regulations. Do not mix old and new batteries. Do not mix alkaline, standard(carbon-zinc), or rechargeable(nickel cadmium, nickel metal hydride or lithium ion) batteries.

03 FCC STATEMENT

This device complies with Part 15 of the FCC Rule. Operation is subject to the following two conditions: (1) This device may not cause harmful interference, and (2) this device must accept any interference received, including interference that may cause undesired operation.

Any Changes or modifications not expressly approved by the party responsible for compliance could void the user's authority to operate the equipment.

This equipment has been tested and found to comply with the limits for a Class B digital device, pursuant to part 15 of the FCC Rules. These limits are designed to

03 FCC STATEMENT

provide reasonable protection against harmful interference in a residential installation. This equipment generates uses and can radiate radio frequency energy and, if not installed and used in accordance with the instructions, may cause harmful interference to radio communications. However, there is no guarantee that interference will not occur in a particular installation. If this equipment does cause harmful interference to radio or television reception, which can be determined by turning the equipment off and on, the user is encouraged to try to correct the interference by one or more of the following measures:

- Reorient or relocate the receiving antenna.
- Increase the separation between the equipment and receiver.
- Connect the equipment into an outlet on a circuit different from that to which the receiver is connected.
- Consult the dealer or an experienced radio/TV technician for help.

FCC Radiation Exposure Statement

This equipment should be installed and operated with minimum distance 20cm between the radiator & your body. This transmitter must not be co-located or operating in conjunction with any other antenna or transmitter.

Distributed by: Wal-Mart Stores,Inc
Bentonville , AR72716
Walmart.com
Telephone:1-833-908-2024

04 ELECTRICAL INFORMATION

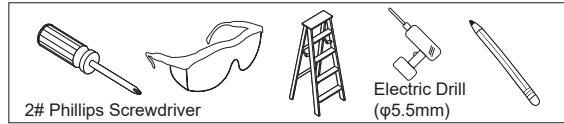
SPECIFICATIONS			
Product Weight	1.07LB	Battery	Li-ion 3.7V 2400mAh
Product Length	9.06"	Rated Power	16W
Product Width	2.17"	Lumen Output	1500Lumens
Product Height	4.80"	Color temperature	5000K

05 PREPARATION

Before beginning assembly of product, Make sure all parts are present. Compare parts with product contents list and hardware contents list. If any part is missing or damaged, do not attempt to assemble the product.

05 PREPARATION

Tools required (Not included)

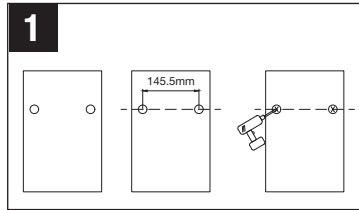


06 INSTALLATION INSTRUCTIONS

CAUTION: BEFORE BEGINNING INSTALLATION TURN OFF THE CIRCUIT BREAKER AND LIGHT SWITCH.

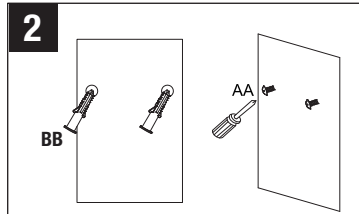
1. Marking the location

- Mark the location where you want to mount the light fixture(A).
- Mark two holes 5.73 in. (145.5 mm) apart. Use a level tool to insure the two holes are level.
- Drill two holes using a 0.22 in. (5.5 mm) drill bit.

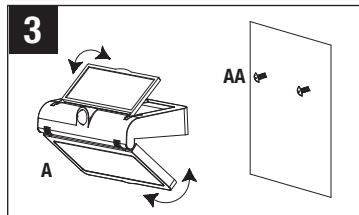


2. Mounting the light

- Insert the wall anchors (BB) so they are flush with the surface.
- Insert the screws (AA) and leave at least 1/4 in. (6.3 mm) of the screws (Part A) outside of the surface for holding the solar fence light.



3. Mount the light on the screws (AA) by placing the keyholes on the back of the light over the screw heads.

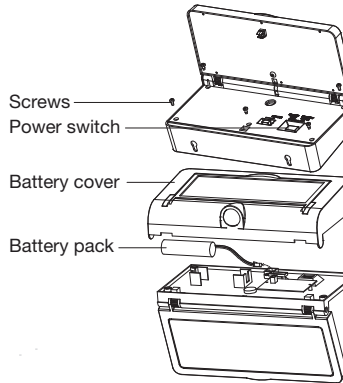


07 TROUBLE SHOOTING

PROBLEM	CORRECTIVE ACTION
Light will not come on.	If the light does not turn on, remove the battery cover and check if the battery pack is connected to the battery connector. If the connection is ok, replace the battery pack with a new one.

08 REPLACING THE BATTERY

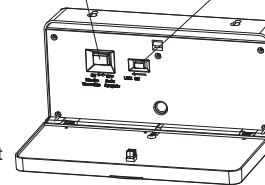
Slide the power switch to the "OFF" position. Use a Phillips head screwdriver to remove the 5 screws holding the battery cover in place. Gently pull battery pack away from the light fixture and disconnect the battery connector. Replace old battery pack with a new 3.7V, 2400 mAh lithium (18650) rechargeable battery pack. Connect the battery connector and insert battery pack into the light fixture. Replace the battery cover by aligning it properly and replacing the 5 screws removed earlier. Slide the power switch to the "ON" position.



09 LINKABLE SET-UP INSTRUCTIONS

- 1) Make sure the LED lights are directed away from your eyes then move the power switch to the "ON" position.
- 2) Among all the lights, select one as the parent light (PL), and the others as the children lights (CL).
- 3) (CL): Move the link button (C) to the "LINK ON" position (direction of arrow) on all children lights (CL) you want to connect to the parent light (PL). Keep in the "LINK ON" position for one

(B) Power switch (C) Link on button



09 LINKABLE SET-UP INSTRUCTIONS

second, then switch the link button (C) back to its initial position quickly. The (CL) will start flashing every second, now they are in link mode. All (CL) after complete step 3) operation, time to place the (PL) in link mode.

4) (PL): Move the link button (Part E) to the "LINK ON" position (direction of arrow). Keep in the "LINK ON" position for 5 seconds, then the parent light (PL) will flash very slowly (flashing every 4 seconds). The (PL) is now in link mode and sending signals to pair with the selected (CL).

5) Once the (CL) in link mode receives and saves the paired ID code signal transmitted by the (PL), the pairing is complete and the units exit the pairing mode. The blinking light(s) will stop flashing and resumes normal use. Only when all (CL) stopped flashing, all (CL) pairs are completed.

6) (PL): Move the link button (C) for parent light (PL) back to its initial position. The blinking light(s) will stop flashing and resumes normal use. Now the (PL) is linked with the (CL), the linking process is complete. When any of the lights (PL) or (CL) are triggered by motion, all lights will activate.

Note: Light will stay on 30 seconds when triggered by motion. Detection range is 19.69-26.2 ft (6-8 m), detection angle is 120°. The lights use radio frequency technology to link, and should not be greater than 49.2 ft (15 m) between the neighboring/adjacent lights.

If you buy a new linkable solar light and want to add it into the "family" by following the LINKABLE SET-UP instructions above, you can link up to 20 lights.

If you want one of the (CL) to unpair, turn link button (Part E) to the "LINK ON" position (direction of arrow), stay for more than 5 seconds, the (CL) will flash very slowly (flashing every 4 seconds). then turn back to the original position. Then this (CL) is unpaired. Attention:

If the lights are linked unsuccessfully, please turn off all lights then follow the LINKABLE SET-UP instructions above and try again.

10 WARRANTY

This security light is backed with a two-year limited warranty to the original purchaser. This warranty covers against defects in material and workmanship under normal use. This warranty does not cover against abuse, improper use, failure to follow directions, neglect, ordinary wear and tear.