

INSTALLATION INSTRUCTIONS

LED Flush Mount Ages

SAFETY PRECAUTIONS:

- CONSULT A QUALIFIED ELECTRICIAN TO ENSURE CORRECT BRANCH CIRCUIT CONDUCTOR.
- WARNING: RISK OF PERSONAL INJURY - PLEASE READ THESE INSTRUCTIONS CAREFULLY. FOLLOW ALL INSTALLATION INSTRUCTIONS AND OBSERVE ALL WARNINGS.
- RETAIN THESE INSTRUCTIONS.
- MAKE SURE THE "SUPPLY" VOLTAGE CORRESPONDS TO THE "RATED" PRODUCT VOLTAGE 120V 60HZ. WITH THE NATIONAL ELECTRICAL CODE AND CORRESPONDING LOCAL CODES.
- IF THE PRODUCT IS DAMAGED, DO NOT ATTEMPT INSTALLATION AND DO NOT USE.
- WARNING: BE SURE THE ELECTRICITY TO THE WIRES YOU ARE WORKING ON IS SHUT OFF. EITHER REMOVE THE FUSE OR TURN THE CIRCUIT OFF.
- WARNING: RISK OF ELECTRICAL SHOCK: THIS PRODUCT MUST BE INSTALLED IN ACCORDANCE WITH THE APPLICABLE INSTALLATION CODE BY A PROFESSIONAL FAMILIAR WITH THE CONSTRUCTION AND OPERATION OF THE PRODUCT. THE PROFESSIONAL SHOULD ALSO BE AWARE OF, AND UNDERSTAND THE HAZARDS INVOLVED WITH THE INSTALLATION OF THIS PRODUCT.
- WARNING: RISK OF FIRE: ALWAYS CONSULT WITH A QUALIFIED ELECTRICIAN TO ENSURE THE CORRECT BRANCH CIRCUIT CONDUCTOR IS UTILIZED. THE MINIMUM CONDUCTOR RATING REQUIREMENT IS 90°C (194°F) IN ORDER TO BE CODE COMPLIANT.
- CAUTION: RISK OF INJURY: ALWAYS WEAR THE NECESSARY SAFETY EQUIPMENT TO PREVENT INJURIES WHEN OPENING, HANDLING, INSTALLING AND MAINTAINING THIS PRODUCT.

SENSOR FUNCTION:

- ON IF THERE'S MOTION.
- OFF WHEN NO MOTION FOR 5 MINUTES.

INDUCTION DISTANCE:

THE LIGHTING WITH SENSOR IS HUNG 9.84FT HIGH, THE INDUCTION RADIUS IS ABOUT 11.48FT.

CAUTIONS:

TRY TO AVOID THE DIRECTION OF THE INDUCTION LIGHTING FACING LARGE METAL EQUIPMENT OR PIPELINES; WHEN INSTALLING MULTIPLE INDUCTION LIGHTS, TRY TO ENSURE THAT THE INDUCTION LIGHTS ARE PARALLEL TO EACH OTHER.

AVOID DIRECTLY FACING TO ANOTHER INDUCTION LIGHT, AND NEED TO KEEP A DISTANCE OF 11.48FT FROM ANOTHER INDUCTION LIGHT.

THIS DEVICE COMPLIES WITH PART 15 OF THE FCC RULES. OPERATION IS SUBJECT TO THE FOLLOWING TWO CONDITIONS: (1) THIS DEVICE MAY NOT CAUSE HARMFUL INTERFERENCE, AND (2) THIS DEVICE MUST ACCEPT ANY INTERFERENCE RECEIVED, INCLUDING INTERFERENCE THAT MAY CAUSE UNDESIRE OPERATION.

FCC WARNING:

ANY CHANGES OR MODIFICATIONS NOT EXPRESSLY APPROVED BY THE PARTY RESPONSIBLE FOR COMPLIANCE COULD VOID THE USER'S AUTHORITY TO OPERATE THE EQUIPMENT.

NOTE: THIS EQUIPMENT HAS BEEN TESTED AND FOUND TO COMPLY WITH THE LIMITS FOR A CLASS B DIGITAL DEVICE, PURSUANT TO PART 15 OF THE FCC RULES. THESE LIMITS ARE DESIGNED TO PROVIDE REASONABLE PROTECTION AGAINST HARMFUL INTERFERENCE IN A RESIDENTIAL INSTALLATION. THIS EQUIPMENT GENERATES USES AND CAN RADIATE RADIO FREQUENCY ENERGY AND, IF NOT INSTALLED AND USED IN ACCORDANCE WITH THE INSTRUCTIONS, MAY CAUSE HARMFUL INTERFERENCE TO RADIO COMMUNICATIONS. HOWEVER, THERE IS NO

SAFETY PRECAUTIONS:

GUARANTEE THAT INTERFERENCE WILL NOT OCCUR IN A PARTICULAR INSTALLATION. IF THIS EQUIPMENT DOES CAUSE HARMFUL INTERFERENCE TO RADIO OR TELEVISION RECEPTION, WHICH CAN BE DETERMINED BY TURNING THE EQUIPMENT OFF AND ON, THE USER IS ENCOURAGED TO TRY TO CORRECT THE INTERFERENCE BY ONE OR MORE OF THE FOLLOWING MEASURES:

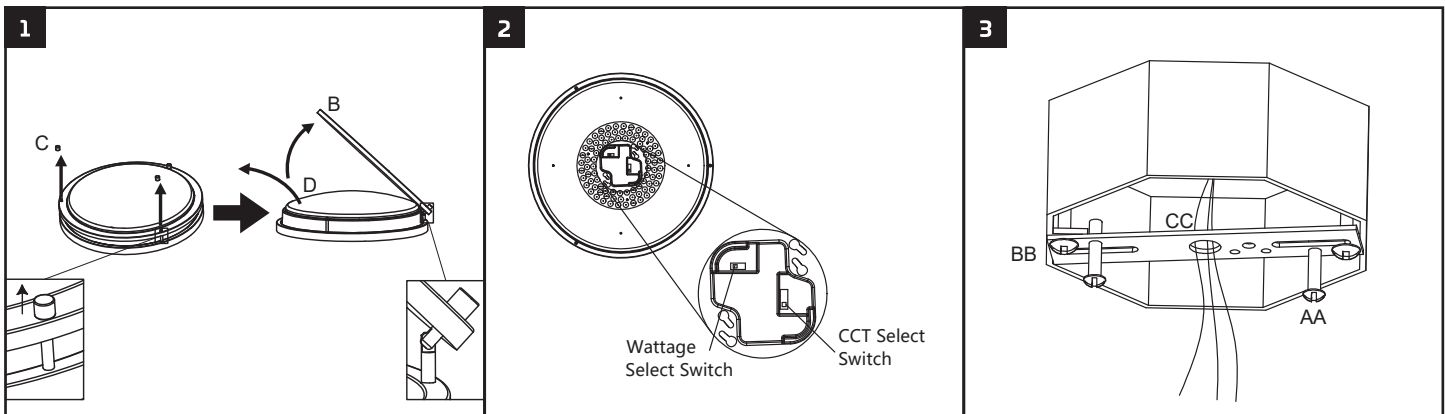
- REORIENT OR RELOCATE THE RECEIVING ANTENNA.
- INCREASE THE SEPARATION BETWEEN THE EQUIPMENT AND RECEIVER.
- CONNECT THE EQUIPMENT INTO AN OUTLET ON A CIRCUIT DIFFERENT FROM THAT TO WHICH THE RECEIVER IS CONNECTED.
- CONSULT THE DEALER OR AN EXPERIENCED RADIO/TV TECHNICIAN FOR HELP.

THIS EQUIPMENT COMPLIES WITH FCC RADIATION EXPOSURE LIMITS SET FORTH FOR AN UNCONTROLLED ENVIRONMENT. THIS EQUIPMENT SHOULD BE INSTALLED AND OPERATED WITH MINIMUM DISTANCE 20CM BETWEEN THE RADIATOR & YOUR BODY.

INSTALLATION:

ALWAYS TURN OFF THE POWER SUPPLY FROM MAIN CIRCUIT BREAKER FIRST!

1. Remove the lens cover D.
2. Select CCT and Wattage.
3. Pre-install (AA) on (CC) and attach it to the Junction Box with screws (BB).



4. Wiring with DD connection: L-L, N-N, GND-GND.
5. Place (A) upward so that (AA) passes through the corresponding mounting hole, then, turn (A) at an Angle so that (AA) snaps into the limit slot, latch (AA) from back until (A) fitted to ceiling.
6. Reinstall the lens cover(D).

