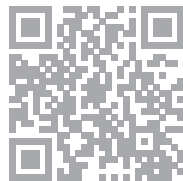


## QUICK GUIDE

**SALTED**  
SMART INSOLE



1

Download App



2

Connect by Bluetooth



3

Enjoy it !!

## SALTED Smart Insole

SALTED is an IoT based digital healthcare solution company, aims to make a healthier life for everyone. Based on foot pressure and the weight shift data, 'SALTED Smart Insole' provides personalized workout plan including corrective exercises and training solutions for both fitness/athletic fields and individual users.

## SALTED Balance

'SALTED Balance' is a balance training application, which assesses the body balance and provide personalized corrective exercises based one's body balance data.

## SALTED Golf

'SALTED Golf' provides optimized body balance and weight shift solution in golf swing. Real-time audio and vibration feedback help users to practice golf drills.

## SALTED Training

'SALTED Training' helps users to perform proper form of workout such as squats, lunges and deadlift by audio coaching in real-time.



Real-time  
vibration feedback

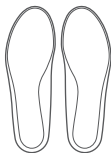


Waterproof  
certification  
(IP68)



Easy and convenient  
magnetic charge

## Packaging



Pair of insoles



Magnetic charging cable



User's Manual

## How to use

⚠ Please use 'SALTED Smart Insole' after charging the battery more than 30 minutes.

⚠ Vibration occurs, once the cable is properly connected to the smart insole.

- 1 Please download and open the application  
Download app from App Store/Google Play.



SALTED Balance



SALTED Golf



SALTED Training



- 2 Please connect smart insole to the application by Bluetooth.

Vibration occurs once the smart insole is connected to the application. Please connect left insole first and then right insole. If there are more than 2 pairs of insoles are around, select 'keep searching' button until it connects to the right one.



⚠ If your smart insole was not used for a long time, please use it after charging it. (standby power for 7 days, successive use for 3 days.)

- 3 Enjoy smart training by SALTED's personalized workout plan

## Specifications

- Transmission/reception frequency : Bluetooth(BLE) : 2402MHz ~ 2480MHz  
Bluetooth(BLE) Class2 Max : 4dBm
- Supply voltage : DC 3.8V(Battery)
- Operating temperature : -10°C ~ +50°C

## Product certification

- Company name : SALTED Co., Ltd. (<http://salted.ltd>)
- Name of apparatus : A wireless data-communication device which is used for system.
- Manufacturing date : marked separately
- Manufacturer/manufacturing country : SALTED Co., Ltd./MADE IN KOREA
- KC Certified number : R-C-IOF-SV-BTINSOLE001



⚠ The wireless device may be crossed.

## A warranty of quality for a year

The quality of this product has been qualified, but if the product is defective, then it will be exchanged to a new product within 1 year. Extra fee may occur if the customer wants to repair the product.

⚠ To exchange/refund, please enclose the receipt/warranty when returning the product. If you are a pre-purchase customer, the date will be counted based on a batch number on the product.

note, \_\_\_\_\_  
\_\_\_\_\_  
\_\_\_\_\_  
\_\_\_\_\_  
\_\_\_\_\_

## Compensation for damage (1year warranty)

According to the customer compensatory regulation for damage, the product will be exchanged or refunded if the product is faulty.

⚠ Exceptions of compensation : default due to customer negligence and carelessness, product used over 1 year will be charged fee for repair.



## Precautions



Please put away from  
hot/electromagnetic waves



Please do not twist  
or impact products



Please do not place smart  
insoles in a car during hot days

- Please use smart insoles as insoles in footwear. Otherwise, the product will be used in a right condition.
- Please put away smart insoles from salty water.
- If the product gets wet by sweat or rain, it should be hand-washed. Then please place them in a dry place.
- Customer is responsible for the damage of the product by washing. Do not wash with a washing machine or a dryer.
- Bad Bluetooth connection may occur due to surroundings

## Exchange/return information

Exchange/refund is available within 7days of receiving unless the product is not used. If the customer changed her/his mind, then the customer must pay the shipping fee.

## A/S Service

Please provide receipt/order date and the ID where you bought the product.

☎ Customer center : +82-2-552-0815

🕒 Business hours : 10:00 ~ 17:00 (Off on weekends/holidays)

📞 Kakao Talk Plus : @Salted Fitness

✉ E-mail : [cs@salted.ltd](mailto:cs@salted.ltd)

## FCC compliance information

THIS DEVICE COMPLIES WITH PART 15 OF THE FCC RULES.

Operation is subject to the following two conditions:

- (1) This device may not cause harmful interference, and
- (2) This device must accept any interference received, including interference that may cause undesired operation.

Note: This equipment has been tested and found to comply with the limits for a Class B digital device, pursuant to part 15 of the FCC Rules. These limits are designed to provide reasonable protection against harmful interference in a residential installation. This equipment generates, uses, and can radiate radio frequency energy and, if not installed and used in accordance with the instructions, may cause harmful interference to radio communications. However, there is no guarantee that interference will not occur in a particular installation. If this equipment does cause harmful interference to radio or television reception, which can be determined by turning the equipment off and on, the user is encouraged to try to correct the interference by one or more of the following measures:

- Reorient or relocate the receiving antenna.
- Increase the separation between the equipment and receiver.
- Connect the equipment into an outlet on a circuit different from that to which the receiver is connected.
- Consult the dealer or an experienced radio/TV technician for help.

Modifications not expressly approved by the manufacturer could void the user's authority to operate the equipment under FCC rules.