

Test Mode:	802.11b	Test channel :	06
<div><div><div>Agilent Spectrum Analyzer - Swept SA</div><div><div>Marker 1 2.436490000000 GHz</div><div>Trig: Free Run #Atten: 20 dB</div></div><div><div>10 dB/div Log</div><div>Ref 10.00 dBm</div></div><div><div>Mkr1 2.436 49 GHz -3.475 dBm</div><div><div>Center 2.43700 GHz #Res BW 100 kHz</div><div><div>Span 30.00 MHz #VBW 300 kHz</div><div>Sweep 2.933 ms (1001 pts)</div></div></div></div><div><div>Peak Search</div><div>Next Peak</div><div>Next Pk Right</div><div>Next Pk Left</div><div>Marker Delta</div><div>Mkr→CF</div><div>Mkr→Ref Lvl</div><div>More 1 of 2</div></div></div></div>			
Channel 06			
<div><div><div>Agilent Spectrum Analyzer - Swept SA</div><div><div>Marker 1 11.538000 kHz</div><div>Trig: Free Run #Atten: 20 dB</div></div><div><div>10 dB/div Log</div><div>Ref 10.00 dBm</div></div><div><div>Mkr1 11.538 kHz -59.098 dBm</div><div><div>Start 9.00 kHz #Res BW 1.0 kHz</div><div><div>Stop 150.00 kHz #VBW 3.0 kHz</div><div>Sweep 134.8 ms (1001 pts)</div></div></div></div><div><div>Peak Search</div><div>Next Peak</div><div>Next Pk Right</div><div>Next Pk Left</div><div>Marker Delta</div><div>Mkr→CF</div><div>Mkr→Ref Lvl</div><div>More 1 of 2</div></div></div></div>			
9KHz~150KHz			
<div><div><div>Agilent Spectrum Analyzer - Swept SA</div><div><div>Marker 1 150.000000 kHz</div><div>Trig: Free Run #Atten: 20 dB</div></div><div><div>10 dB/div Log</div><div>Ref 10.00 dBm</div></div><div><div>Mkr1 150.00 kHz -70.715 dBm</div><div><div>Start 150 kHz #Res BW 10 kHz</div><div><div>Stop 10.00 MHz #VBW 30 kHz</div><div>Sweep 94.20 ms (1001 pts)</div></div></div></div><div><div>Peak Search</div><div>Next Peak</div><div>Next Pk Right</div><div>Next Pk Left</div><div>Marker Delta</div><div>Mkr→CF</div><div>Mkr→Ref Lvl</div><div>More 1 of 2</div></div></div></div>			
150KHz ~10MHz			

Test Mode:	802.11b	Test channel :	06								
<div><div><div><div>Agilent Spectrum Analyzer - Swept SA</div><div><div>Marker 1 16.900000000 MHz</div><div>Trig: Free Run #Atten: 20 dB</div></div><div><div>10 dB/div Log</div><div>Ref 10.00 dBm</div></div><div><div>Mkr1 16.90 MHz -70.433 dBm</div></div><div><div>Start 10.00 MHz #Res BW 100 kHz</div><div>#VBW 300 kHz</div><div>Stop 30.00 MHz Sweep 1.933 ms (1001 pts)</div></div></div><div><div>Peak Search</div><div>Next Peak</div><div>Next Pk Right</div><div>Next Pk Left</div><div>Marker Delta</div><div>Mkr→CF</div><div>Mkr→Ref Lvl</div><div>More 1 of 2</div></div></div></div> <div>10MHz ~30MHz</div> <tr><td colspan="4"><div><div><div><div>Agilent Spectrum Analyzer - Swept SA</div><div><div>Marker 1 2.634690000000 GHz</div><div>Trig: Free Run #Atten: 20 dB</div></div><div><div>10 dB/div Log</div><div>Ref 10.00 dBm</div></div><div><div>Mkr1 2.634 7 GHz -64.429 dBm</div></div><div><div>Start 30 MHz #Res BW 100 kHz</div><div>#VBW 300 kHz</div><div>Stop 3.000 GHz Sweep 283.9 ms (1001 pts)</div></div></div><div><div>Peak Search</div><div>Next Peak</div><div>Next Pk Right</div><div>Next Pk Left</div><div>Marker Delta</div><div>Mkr→CF</div><div>Mkr→Ref Lvl</div><div>More 1 of 2</div></div></div></div><div>30MHz ~3GHz</div><tr><td colspan="4"><div><div><div><div>Agilent Spectrum Analyzer - Swept SA</div><div><div>Marker 1 24.516000000000 GHz</div><div>Trig: Free Run #Atten: 20 dB</div></div><div><div>10 dB/div Log</div><div>Ref 10.00 dBm</div></div><div><div>Mkr1 24.516 GHz -55.984 dBm</div></div><div><div>Start 3.00 GHz #Res BW 100 kHz</div><div>#VBW 300 kHz</div><div>Stop 25.00 GHz Sweep 2.103 s (1001 pts)</div></div></div><div><div>Peak Search</div><div>Next Peak</div><div>Next Pk Right</div><div>Next Pk Left</div><div>Marker Delta</div><div>Mkr→CF</div><div>Mkr→Ref Lvl</div><div>More 1 of 2</div></div></div></div><div>3GHz~25GHz</div></td></tr></td></tr>				<div><div><div><div>Agilent Spectrum Analyzer - Swept SA</div><div><div>Marker 1 2.634690000000 GHz</div><div>Trig: Free Run #Atten: 20 dB</div></div><div><div>10 dB/div Log</div><div>Ref 10.00 dBm</div></div><div><div>Mkr1 2.634 7 GHz -64.429 dBm</div></div><div><div>Start 30 MHz #Res BW 100 kHz</div><div>#VBW 300 kHz</div><div>Stop 3.000 GHz Sweep 283.9 ms (1001 pts)</div></div></div><div><div>Peak Search</div><div>Next Peak</div><div>Next Pk Right</div><div>Next Pk Left</div><div>Marker Delta</div><div>Mkr→CF</div><div>Mkr→Ref Lvl</div><div>More 1 of 2</div></div></div></div> <div>30MHz ~3GHz</div> <tr><td colspan="4"><div><div><div><div>Agilent Spectrum Analyzer - Swept SA</div><div><div>Marker 1 24.516000000000 GHz</div><div>Trig: Free Run #Atten: 20 dB</div></div><div><div>10 dB/div Log</div><div>Ref 10.00 dBm</div></div><div><div>Mkr1 24.516 GHz -55.984 dBm</div></div><div><div>Start 3.00 GHz #Res BW 100 kHz</div><div>#VBW 300 kHz</div><div>Stop 25.00 GHz Sweep 2.103 s (1001 pts)</div></div></div><div><div>Peak Search</div><div>Next Peak</div><div>Next Pk Right</div><div>Next Pk Left</div><div>Marker Delta</div><div>Mkr→CF</div><div>Mkr→Ref Lvl</div><div>More 1 of 2</div></div></div></div><div>3GHz~25GHz</div></td></tr>				<div><div><div><div>Agilent Spectrum Analyzer - Swept SA</div><div><div>Marker 1 24.516000000000 GHz</div><div>Trig: Free Run #Atten: 20 dB</div></div><div><div>10 dB/div Log</div><div>Ref 10.00 dBm</div></div><div><div>Mkr1 24.516 GHz -55.984 dBm</div></div><div><div>Start 3.00 GHz #Res BW 100 kHz</div><div>#VBW 300 kHz</div><div>Stop 25.00 GHz Sweep 2.103 s (1001 pts)</div></div></div><div><div>Peak Search</div><div>Next Peak</div><div>Next Pk Right</div><div>Next Pk Left</div><div>Marker Delta</div><div>Mkr→CF</div><div>Mkr→Ref Lvl</div><div>More 1 of 2</div></div></div></div> <div>3GHz~25GHz</div>			
<div><div><div><div>Agilent Spectrum Analyzer - Swept SA</div><div><div>Marker 1 2.634690000000 GHz</div><div>Trig: Free Run #Atten: 20 dB</div></div><div><div>10 dB/div Log</div><div>Ref 10.00 dBm</div></div><div><div>Mkr1 2.634 7 GHz -64.429 dBm</div></div><div><div>Start 30 MHz #Res BW 100 kHz</div><div>#VBW 300 kHz</div><div>Stop 3.000 GHz Sweep 283.9 ms (1001 pts)</div></div></div><div><div>Peak Search</div><div>Next Peak</div><div>Next Pk Right</div><div>Next Pk Left</div><div>Marker Delta</div><div>Mkr→CF</div><div>Mkr→Ref Lvl</div><div>More 1 of 2</div></div></div></div> <div>30MHz ~3GHz</div> <tr><td colspan="4"><div><div><div><div>Agilent Spectrum Analyzer - Swept SA</div><div><div>Marker 1 24.516000000000 GHz</div><div>Trig: Free Run #Atten: 20 dB</div></div><div><div>10 dB/div Log</div><div>Ref 10.00 dBm</div></div><div><div>Mkr1 24.516 GHz -55.984 dBm</div></div><div><div>Start 3.00 GHz #Res BW 100 kHz</div><div>#VBW 300 kHz</div><div>Stop 25.00 GHz Sweep 2.103 s (1001 pts)</div></div></div><div><div>Peak Search</div><div>Next Peak</div><div>Next Pk Right</div><div>Next Pk Left</div><div>Marker Delta</div><div>Mkr→CF</div><div>Mkr→Ref Lvl</div><div>More 1 of 2</div></div></div></div><div>3GHz~25GHz</div></td></tr>				<div><div><div><div>Agilent Spectrum Analyzer - Swept SA</div><div><div>Marker 1 24.516000000000 GHz</div><div>Trig: Free Run #Atten: 20 dB</div></div><div><div>10 dB/div Log</div><div>Ref 10.00 dBm</div></div><div><div>Mkr1 24.516 GHz -55.984 dBm</div></div><div><div>Start 3.00 GHz #Res BW 100 kHz</div><div>#VBW 300 kHz</div><div>Stop 25.00 GHz Sweep 2.103 s (1001 pts)</div></div></div><div><div>Peak Search</div><div>Next Peak</div><div>Next Pk Right</div><div>Next Pk Left</div><div>Marker Delta</div><div>Mkr→CF</div><div>Mkr→Ref Lvl</div><div>More 1 of 2</div></div></div></div> <div>3GHz~25GHz</div>							
<div><div><div><div>Agilent Spectrum Analyzer - Swept SA</div><div><div>Marker 1 24.516000000000 GHz</div><div>Trig: Free Run #Atten: 20 dB</div></div><div><div>10 dB/div Log</div><div>Ref 10.00 dBm</div></div><div><div>Mkr1 24.516 GHz -55.984 dBm</div></div><div><div>Start 3.00 GHz #Res BW 100 kHz</div><div>#VBW 300 kHz</div><div>Stop 25.00 GHz Sweep 2.103 s (1001 pts)</div></div></div><div><div>Peak Search</div><div>Next Peak</div><div>Next Pk Right</div><div>Next Pk Left</div><div>Marker Delta</div><div>Mkr→CF</div><div>Mkr→Ref Lvl</div><div>More 1 of 2</div></div></div></div> <div>3GHz~25GHz</div>											

Test Mode:	802.11b	Test channel :	11
<div><div><div>Agilent Spectrum Analyzer - Swept SA</div><div><div>Marker 1 2.461490000000 GHz</div><div>Trig: Free Run #Atten: 20 dB</div></div><div><div>10 dB/div Log</div><div>Ref 10.00 dBm</div></div><div><div>Mkr1 2.461 49 GHz -2.949 dBm</div><div><div>Center 2.46200 GHz #Res BW 100 kHz</div><div><div>Span 30.00 MHz #VBW 300 kHz</div><div>Sweep 2.933 ms (1001 pts)</div></div></div></div><div><div>Peak Search</div><div>Next Peak</div><div>Next Pk Right</div><div>Next Pk Left</div><div>Marker Delta</div><div>Mkr→CF</div><div>Mkr→Ref Lvl</div><div>More 1 of 2</div></div></div></div>			
Channel 11			
<div><div><div>Agilent Spectrum Analyzer - Swept SA</div><div><div>Marker 1 9.0000000 kHz</div><div>Trig: Free Run #Atten: 20 dB</div></div><div><div>10 dB/div Log</div><div>Ref 10.00 dBm</div></div><div><div>Mkr1 9.000 kHz -58.434 dBm</div><div><div>Start 9.00 kHz #Res BW 1.0 kHz</div><div><div>Stop 150.00 kHz #VBW 3.0 kHz</div><div>Sweep 134.8 ms (1001 pts)</div></div></div></div><div><div>Peak Search</div><div>Next Peak</div><div>Next Pk Right</div><div>Next Pk Left</div><div>Marker Delta</div><div>Mkr→CF</div><div>Mkr→Ref Lvl</div><div>More 1 of 2</div></div></div></div>			
9KHz~150KHz			
<div><div><div>Agilent Spectrum Analyzer - Swept SA</div><div><div>Marker 1 159.850000 kHz</div><div>Trig: Free Run #Atten: 20 dB</div></div><div><div>10 dB/div Log</div><div>Ref 10.00 dBm</div></div><div><div>Mkr1 159.85 kHz -70.843 dBm</div><div><div>Start 150 kHz #Res BW 10 kHz</div><div><div>Stop 10.000 MHz #VBW 30 kHz</div><div>Sweep 94.20 ms (1001 pts)</div></div></div></div><div><div>Peak Search</div><div>Next Peak</div><div>Next Pk Right</div><div>Next Pk Left</div><div>Marker Delta</div><div>Mkr→CF</div><div>Mkr→Ref Lvl</div><div>More 1 of 2</div></div></div></div>			
150KHz ~10MHz			

Test Mode:	802.11b	Test channel :	11
<div><div><div><div>Agilent Spectrum Analyzer - Swept SA</div><div><div>Marker 1 16.460000000 MHz</div><div>Trig: Free Run #Atten: 20 dB</div></div><div><div>10 dB/div</div><div>Ref 10.00 dBm</div></div><div><div>Mkr1 16.46 MHz -69.620 dBm</div></div><div><div>Start 10.00 MHz #Res BW 100 kHz</div><div><div>#VBW 300 kHz</div><div>Sweep 1.933 ms (1001 pts)</div></div></div></div><div><div>Peak Search</div><div>Next Peak</div><div>Next Pk Right</div><div>Next Pk Left</div><div>Marker Delta</div><div>Mkr→CF</div><div>Mkr→Ref Lvl</div><div>More 1 of 2</div></div></div></div>			
10MHz ~30MHz			
<div><div><div><div>Agilent Spectrum Analyzer - Swept SA</div><div><div>Marker 1 2.619840000000 GHz</div><div>Trig: Free Run #Atten: 20 dB</div></div><div><div>10 dB/div</div><div>Ref 10.00 dBm</div></div><div><div>Mkr1 2.619 8 GHz -63.888 dBm</div></div><div><div>Start 30 MHz #Res BW 100 kHz</div><div><div>#VBW 300 kHz</div><div>Sweep 283.9 ms (1001 pts)</div></div></div></div><div><div>Peak Search</div><div>Next Peak</div><div>Next Pk Right</div><div>Next Pk Left</div><div>Marker Delta</div><div>Mkr→CF</div><div>Mkr→Ref Lvl</div><div>More 1 of 2</div></div></div></div>			
30MHz ~3GHz			
<div><div><div><div>Agilent Spectrum Analyzer - Swept SA</div><div><div>Marker 1 24.516000000000 GHz</div><div>Trig: Free Run #Atten: 20 dB</div></div><div><div>10 dB/div</div><div>Ref 10.00 dBm</div></div><div><div>Mkr1 24.516 GHz -57.290 dBm</div></div><div><div>Start 3.00 GHz #Res BW 100 kHz</div><div><div>#VBW 300 kHz</div><div>Sweep 2.103 s (1001 pts)</div></div></div></div><div><div>Peak Search</div><div>Next Peak</div><div>Next Pk Right</div><div>Next Pk Left</div><div>Marker Delta</div><div>Mkr→CF</div><div>Mkr→Ref Lvl</div><div>More 1 of 2</div></div></div></div>			
3GHz~25GHz			

Test Mode:

802.11g

Test channel :

01

Agilent Spectrum Analyzer - Swept SA

Marker 1 2.416140000000 GHz

Trig: Free Run #Atten: 20 dB

Avg Type: Log-Pwr AvgHold: 100/100

Ref 10.00 dBm

Mkr1 2.416 14 GHz -13.033 dBm

Center 2.41200 GHz #Res BW 100 kHz #VBW 300 kHz Span 30.00 MHz Sweep 2.933 ms (1001 pts)

Peak Search

Next Peak

Next Pk Right

Next Pk Left

Marker Delta

Mkr→CF

Mkr→Ref Lvl

More 1 of 2

Channel 01

Agilent Spectrum Analyzer - Swept SA

Marker 1 15.204000 kHz

Trig: Free Run #Atten: 20 dB

Avg Type: Log-Pwr AvgHold: 100/100

Ref 10.00 dBm

Mkr1 15.204 kHz -60.619 dBm

Start 9.00 kHz #Res BW 1.0 kHz #VBW 3.0 kHz Stop 150.00 kHz Sweep 134.8 ms (1001 pts)

Peak Search

Next Peak

Next Pk Right

Next Pk Left

Marker Delta

Mkr→CF

Mkr→Ref Lvl

More 1 of 2

STATUS: DC Coupled

9KHz~150KHz

Agilent Spectrum Analyzer - Swept SA

Marker 1 150.000000 kHz

Trig: Free Run #Atten: 20 dB

Avg Type: Log-Pwr AvgHold: 100/100

Ref 10.00 dBm

Mkr1 150.00 kHz -71.952 dBm

Start 150 kHz #Res BW 10 kHz #VBW 30 kHz Stop 10.000 MHz Sweep 94.20 ms (1001 pts)

Peak Search

Next Peak

Next Pk Right

Next Pk Left

Marker Delta

Mkr→CF

Mkr→Ref Lvl

More 1 of 2

STATUS: DC Coupled

150KHz ~10MHz

Test Mode:	802.11g	Test channel :	01
<div><div><div><div>Agilent Spectrum Analyzer - Swept SA</div><div><div>Marker 1 19.540000000 MHz</div><div>Trig: Free Run #Att: 20 dB</div></div><div><div>10 dB/div</div><div>Ref 10.00 dBm</div></div><div><div>Mkr1 19.54 MHz -70.574 dBm</div></div><div><div>Start 10.00 MHz #Res BW 100 kHz</div><div><div>#VBW 300 kHz</div><div>Sweep 1.933 ms (1001 pts)</div></div></div></div><div><div>Peak Search</div><div>Next Peak</div><div>Next Pk Right</div><div>Next Pk Left</div><div>Marker Delta</div><div>Mkr→CF</div><div>Mkr→Ref Lvl</div><div>More 1 of 2</div></div></div></div>			
10MHz ~30MHz			
<div><div><div><div>Agilent Spectrum Analyzer - Swept SA</div><div><div>Marker 1 2.604990000000 GHz</div><div>Trig: Free Run #Att: 20 dB</div></div><div><div>10 dB/div</div><div>Ref 10.00 dBm</div></div><div><div>Mkr1 2.605 0 GHz -66.615 dBm</div></div><div><div>Start 30 MHz #Res BW 100 kHz</div><div><div>#VBW 300 kHz</div><div>Sweep 283.9 ms (1001 pts)</div></div></div></div><div><div>Peak Search</div><div>Next Peak</div><div>Next Pk Right</div><div>Next Pk Left</div><div>Marker Delta</div><div>Mkr→CF</div><div>Mkr→Ref Lvl</div><div>More 1 of 2</div></div></div></div>			
30MHz ~3GHz			
<div><div><div><div>Agilent Spectrum Analyzer - Swept SA</div><div><div>Marker 1 24.472000000000 GHz</div><div>Trig: Free Run #Att: 20 dB</div></div><div><div>10 dB/div</div><div>Ref 10.00 dBm</div></div><div><div>Mkr1 24.472 GHz -56.994 dBm</div></div><div><div>Start 3.00 GHz #Res BW 100 kHz</div><div><div>#VBW 300 kHz</div><div>Sweep 2.103 s (1001 pts)</div></div></div></div><div><div>Peak Search</div><div>Next Peak</div><div>Next Pk Right</div><div>Next Pk Left</div><div>Marker Delta</div><div>Mkr→CF</div><div>Mkr→Ref Lvl</div><div>More 1 of 2</div></div></div></div>			
3GHz~25GHz			

Test Mode:	802.11g	Test channel :	06
<div><div><div><div>Agilent Spectrum Analyzer - Swept SA</div><div><div>Marker 1 2.441140000000 GHz</div><div>Trig: Free Run #Atten: 20 dB</div></div><div><div>10 dB/div Log</div><div>Ref 10.00 dBm</div></div><div><div>Mkr1 2.441 14 GHz -12.517 dBm</div></div><div><div>Center 2.43700 GHz #Res BW 100 kHz</div><div>#VBW 300 kHz</div><div>Span 30.00 MHz Sweep 2.933 ms (1001 pts)</div></div></div><div><div>Peak Search</div><div>Next Peak</div><div>Next Pk Right</div><div>Next Pk Left</div><div>Marker Delta</div><div>Mkr→CF</div><div>Mkr→Ref Lvl</div><div>More 1 of 2</div></div></div></div>			
Channel 06			
<div><div><div><div>Agilent Spectrum Analyzer - Swept SA</div><div><div>Marker 1 11.397000 kHz</div><div>Trig: Free Run #Atten: 20 dB</div></div><div><div>10 dB/div Log</div><div>Ref 10.00 dBm</div></div><div><div>Mkr1 11.397 kHz -58.059 dBm</div></div><div><div>Start 9.00 kHz #Res BW 1.0 kHz</div><div>#VBW 3.0 kHz</div><div>Stop 150.00 kHz Sweep 134.8 ms (1001 pts)</div></div></div><div><div>Peak Search</div><div>Next Peak</div><div>Next Pk Right</div><div>Next Pk Left</div><div>Marker Delta</div><div>Mkr→CF</div><div>Mkr→Ref Lvl</div><div>More 1 of 2</div></div></div></div>			
9KHz~150KHz			
<div><div><div><div>Agilent Spectrum Analyzer - Swept SA</div><div><div>Marker 1 159.850000 kHz</div><div>Trig: Free Run #Atten: 20 dB</div></div><div><div>10 dB/div Log</div><div>Ref 10.00 dBm</div></div><div><div>Mkr1 159.85 kHz -71.780 dBm</div></div><div><div>Start 150 kHz #Res BW 10 kHz</div><div>#VBW 30 kHz</div><div>Stop 10.000 MHz Sweep 94.20 ms (1001 pts)</div></div></div><div><div>Peak Search</div><div>Next Peak</div><div>Next Pk Right</div><div>Next Pk Left</div><div>Marker Delta</div><div>Mkr→CF</div><div>Mkr→Ref Lvl</div><div>More 1 of 2</div></div></div></div>			
150KHz ~10MHz			

Test Mode:	802.11g	Test channel :	06
<div><div><div>Agilent Spectrum Analyzer - Swept SA</div><div><div>Marker 1 16.800000000 MHz</div><div>Trig: Free Run #Atten: 20 dB</div></div><div><div>10 dB/div Log</div><div>Ref 10.00 dBm</div></div><div><div>Mkr1 16.80 MHz -70.880 dBm</div></div><div><div>Start 10.00 MHz #Res BW 100 kHz</div><div>#VBW 300 kHz</div><div>Stop 30.00 MHz Sweep 1.933 ms (1001 pts)</div></div></div><div><div>Peak Search</div><div>Next Peak</div><div>Next Pk Right</div><div>Next Pk Left</div><div>Marker Delta</div><div>Mkr→CF</div><div>Mkr→Ref Lvl</div><div>More 1 of 2</div></div></div>			
10MHz ~30MHz			
<div><div><div>Agilent Spectrum Analyzer - Swept SA</div><div><div>Marker 1 2.634690000000 GHz</div><div>Trig: Free Run #Atten: 20 dB</div></div><div><div>10 dB/div Log</div><div>Ref 10.00 dBm</div></div><div><div>Mkr1 2.634 7 GHz -64.123 dBm</div></div><div><div>Start 30 MHz #Res BW 100 kHz</div><div>#VBW 300 kHz</div><div>Stop 3.000 GHz Sweep 283.9 ms (1001 pts)</div></div></div><div><div>Peak Search</div><div>Next Peak</div><div>Next Pk Right</div><div>Next Pk Left</div><div>Marker Delta</div><div>Mkr→CF</div><div>Mkr→Ref Lvl</div><div>More 1 of 2</div></div></div>			
30MHz ~3GHz			
<div><div><div>Agilent Spectrum Analyzer - Swept SA</div><div><div>Marker 1 24.472000000000 GHz</div><div>Trig: Free Run #Atten: 20 dB</div></div><div><div>10 dB/div Log</div><div>Ref 10.00 dBm</div></div><div><div>Mkr1 24.472 GHz -57.582 dBm</div></div><div><div>Start 3.00 GHz #Res BW 100 kHz</div><div>#VBW 300 kHz</div><div>Stop 25.00 GHz Sweep 2.103 s (1001 pts)</div></div></div><div><div>Peak Search</div><div>Next Peak</div><div>Next Pk Right</div><div>Next Pk Left</div><div>Marker Delta</div><div>Mkr→CF</div><div>Mkr→Ref Lvl</div><div>More 1 of 2</div></div></div>			
3GHz~25GHz			



Test Mode:	802.11g	Test channel :	11
<div><div><div>Agilent Spectrum Analyzer - Swept SA</div><div><div>Display Line -32.01 dBm</div><div>PN0: Fast IF Gain: Low</div><div>Trig: Free Run #Atten: 20 dB</div><div>Align Now</div><div>Align OFF</div><div>04:52:35 PM Jun 02, 2017</div><div>TRACE 1 2 3 4 5</div><div>TYPE M W W W W W W W</div><div>DET P H I L T N L N</div></div><div><div>10 dB/div</div><div>Ref 10.00 dBm</div><div>Mkr1 2.466 14 GHz -12.031 dBm</div><div>1</div><div>Center 2.46200 GHz</div><div>#Res BW 100 kHz</div><div>#VBW 300 kHz</div><div>Span 30.00 MHz</div><div>Sweep 2.933 ms (1001 pts)</div><div>STATUS</div></div><div><div>All</div><div>All but RF</div><div>RF</div></div></div></div>			
Channel 11			
<div><div><div>Agilent Spectrum Analyzer - Swept SA</div><div><div>Marker 1 9.705000 kHz</div><div>PN0: Wide IF Gain: Low</div><div>Trig: Free Run #Atten: 20 dB</div><div>Align Now</div><div>Align OFF</div><div>04:54:37 PM Jun 02, 2017</div><div>TRACE 1 2 3 4 5</div><div>TYPE M W W W W W W W</div><div>DET P H I L T N L N</div></div><div><div>10 dB/div</div><div>Ref 10.00 dBm</div><div>Mkr1 9.705 kHz -58.703 dBm</div><div>1</div><div>Start 9.00 kHz</div><div>#Res BW 1.0 kHz</div><div>#VBW 3.0 kHz</div><div>Stop 150.00 kHz</div><div>Sweep 134.8 ms (1001 pts)</div><div>STATUS</div></div><div><div>Peak Search</div><div>Next Peak</div><div>Next Pk Right</div><div>Next Pk Left</div><div>Marker Delta</div><div>Mkr--CF</div><div>Mkr--Ref Lvl</div><div>More 1 of 2</div></div></div></div>			
9KHz~150KHz			
<div><div><div>Agilent Spectrum Analyzer - Swept SA</div><div><div>Marker 1 150.000000 kHz</div><div>PN0: Wide IF Gain: Low</div><div>Trig: Free Run #Atten: 20 dB</div><div>Align Now</div><div>Align OFF</div><div>04:55:18 PM Jun 02, 2017</div><div>TRACE 1 2 3 4 5</div><div>TYPE M W W W W W W W</div><div>DET P H I L T N L N</div></div><div><div>10 dB/div</div><div>Ref 10.00 dBm</div><div>Mkr1 150.00 kHz -72.636 dBm</div><div>1</div><div>Start 150 kHz</div><div>#Res BW 10 kHz</div><div>#VBW 30 kHz</div><div>Stop 10.000 MHz</div><div>Sweep 94.20 ms (1001 pts)</div><div>STATUS</div></div><div><div>Peak Search</div><div>Next Peak</div><div>Next Pk Right</div><div>Next Pk Left</div><div>Marker Delta</div><div>Mkr--CF</div><div>Mkr--Ref Lvl</div><div>More 1 of 2</div></div></div></div>			
150KHz ~10MHz			

Test Mode:	802.11g	Test channel :	11
<div><div><div>Agilent Spectrum Analyzer - Swept SA</div><div><div>Marker 1 16.280000000 MHz</div><div>Trig: Free Run #Att: 20 dB</div></div><div><div>10 dB/div Log</div><div>Ref 10.00 dBm</div></div><div><div>Mkr1 16.28 MHz -71.422 dBm</div><div>Start 10.00 MHz #Res BW 100 kHz</div><div><div>Stop 30.00 MHz #VBW 300 kHz Sweep 1.933 ms (1001 pts)</div></div></div><div><div>Peak Search</div><div>Next Peak</div><div>Next Pk Right</div><div>Next Pk Left</div><div>Marker Delta</div><div>Mkr→CF</div><div>Mkr→Ref Lvl</div><div>More 1 of 2</div></div></div></div>			
10MHz ~30MHz			
<div><div><div>Agilent Spectrum Analyzer - Swept SA</div><div><div>Marker 1 2.685180000000 GHz</div><div>Trig: Free Run #Att: 20 dB</div></div><div><div>10 dB/div Log</div><div>Ref 10.00 dBm</div></div><div><div>Mkr1 2.685 2 GHz -65.570 dBm</div><div>Start 30 MHz #Res BW 100 kHz</div><div><div>Stop 3.000 GHz #VBW 300 kHz Sweep 283.9 ms (1001 pts)</div></div></div><div><div>Peak Search</div><div>Next Peak</div><div>Next Pk Right</div><div>Next Pk Left</div><div>Marker Delta</div><div>Mkr→CF</div><div>Mkr→Ref Lvl</div><div>More 1 of 2</div></div></div></div>			
30MHz ~3GHz			
<div><div><div>Agilent Spectrum Analyzer - Swept SA</div><div><div>Marker 1 24.538000000000 GHz</div><div>Trig: Free Run #Att: 20 dB</div></div><div><div>10 dB/div Log</div><div>Ref 10.00 dBm</div></div><div><div>Mkr1 24.538 GHz -56.391 dBm</div><div>Start 3.00 GHz #Res BW 100 kHz</div><div><div>Stop 25.00 GHz #VBW 300 kHz Sweep 2.103 s (1001 pts)</div></div></div><div><div>Peak Search</div><div>Next Peak</div><div>Next Pk Right</div><div>Next Pk Left</div><div>Marker Delta</div><div>Mkr→CF</div><div>Mkr→Ref Lvl</div><div>More 1 of 2</div></div></div></div>			
3GHz~25GHz			

Test Mode:	802.11n HT20	Test channel :	01
<div><div><div>Agilent Spectrum Analyzer - Swept SA</div><div><div>Marker 1 2.409120000000 GHz</div><div>Trig: Free Run #Atten: 20 dB</div></div><div><div>SENSE:INT</div><div>ALIGN: OFF</div><div>04:58:04 PM Jun 02, 2017</div></div><div><div>10 dB/div</div><div>Ref 10.00 dBm</div></div><div><div>Mkr1 2.409 12 GHz</div><div>-12.742 dBm</div></div><div><div>Center 2.41200 GHz</div><div>#Res BW 100 kHz</div><div>#VBW 300 kHz</div><div>Span 30.00 MHz</div><div>Sweep 2.933 ms (1001 pts)</div></div><div><div>MSO</div><div>STATUS</div></div></div><div><div>Peak Search</div><div>Next Peak</div><div>Next Pk Right</div><div>Next Pk Left</div><div>Marker Delta</div><div>Mkr→CF</div><div>Mkr→Ref Lvl</div><div>More 1 of 2</div></div></div>			
Channel 01			
<div><div><div>Agilent Spectrum Analyzer - Swept SA</div><div><div>Marker 1 11.115000 kHz</div><div>Trig: Free Run #Atten: 20 dB</div></div><div><div>SENSE:INT</div><div>ALIGN: OFF</div><div>04:59:36 PM Jun 02, 2017</div></div><div><div>10 dB/div</div><div>Ref 10.00 dBm</div></div><div><div>Mkr1 11.115 kHz</div><div>-58.930 dBm</div></div><div><div>Start 9.00 kHz</div><div>#Res BW 1.0 kHz</div><div>#VBW 3.0 kHz</div><div>Stop 150.00 kHz</div><div>Sweep 134.8 ms (1001 pts)</div></div><div><div>MSO</div><div>STATUS</div></div></div><div><div>Peak Search</div><div>Next Peak</div><div>Next Pk Right</div><div>Next Pk Left</div><div>Marker Delta</div><div>Mkr→CF</div><div>Mkr→Ref Lvl</div><div>More 1 of 2</div></div></div>			
9KHz~150KHz			
<div><div><div>Agilent Spectrum Analyzer - Swept SA</div><div><div>Marker 1 159.850000 kHz</div><div>Trig: Free Run #Atten: 20 dB</div></div><div><div>SENSE:INT</div><div>ALIGN: OFF</div><div>05:00:26 PM Jun 02, 2017</div></div><div><div>10 dB/div</div><div>Ref 10.00 dBm</div></div><div><div>Mkr1 159.85 kHz</div><div>-71.908 dBm</div></div><div><div>Start 150 kHz</div><div>#Res BW 10 kHz</div><div>#VBW 30 kHz</div><div>Stop 10.000 MHz</div><div>Sweep 94.20 ms (1001 pts)</div></div><div><div>MSO</div><div>STATUS</div></div></div><div><div>Peak Search</div><div>Next Peak</div><div>Next Pk Right</div><div>Next Pk Left</div><div>Marker Delta</div><div>Mkr→CF</div><div>Mkr→Ref Lvl</div><div>More 1 of 2</div></div></div>			
150KHz ~10MHz			

Test Mode:	802.11n HT20	Test channel :	01								
<div><div><div><div>Agilent Spectrum Analyzer - Swept SA</div><div><div>Marker 1 23.640000000 MHz</div><div>Trig: Free Run #Atten: 20 dB</div></div><div><div>10 dB/div Log</div><div>Ref 10.00 dBm</div></div><div><div>Mkr1 23.64 MHz -71.501 dBm</div><div>Start 10.00 MHz #Res BW 100 kHz</div><div>Stop 30.00 MHz #VBW 300 kHz Sweep 1.933 ms (1001 pts)</div></div></div><div><div>Peak Search</div><div>Next Peak</div><div>Next Pk Right</div><div>Next Pk Left</div><div>Marker Delta</div><div>Mkr→CF</div><div>Mkr→Ref Lvl</div><div>More 1 of 2</div></div></div></div> <div>10MHz ~30MHz</div> <tr><td colspan="4"><div><div><div><div>Agilent Spectrum Analyzer - Swept SA</div><div><div>Marker 1 2.6198400000000 GHz</div><div>Trig: Free Run #Atten: 20 dB</div></div><div><div>10 dB/div Log</div><div>Ref 10.00 dBm</div></div><div><div>Mkr1 2.619 8 GHz -66.219 dBm</div><div>Start 30 MHz #Res BW 100 kHz</div><div>Stop 3.000 GHz #VBW 300 kHz Sweep 283.9 ms (1001 pts)</div></div></div><div><div>Peak Search</div><div>Next Peak</div><div>Next Pk Right</div><div>Next Pk Left</div><div>Marker Delta</div><div>Mkr→CF</div><div>Mkr→Ref Lvl</div><div>More 1 of 2</div></div></div></div><div>30MHz ~3GHz</div><tr><td colspan="4"><div><div><div><div>Agilent Spectrum Analyzer - Swept SA</div><div><div>Marker 1 24.4720000000000 GHz</div><div>Trig: Free Run #Atten: 20 dB</div></div><div><div>10 dB/div Log</div><div>Ref 10.00 dBm</div></div><div><div>Mkr1 24.472 GHz -57.636 dBm</div><div>Start 3.00 GHz #Res BW 100 kHz</div><div>Stop 25.00 GHz #VBW 300 kHz Sweep 2.103 s (1001 pts)</div></div></div><div><div>Peak Search</div><div>Next Peak</div><div>Next Pk Right</div><div>Next Pk Left</div><div>Marker Delta</div><div>Mkr→CF</div><div>Mkr→Ref Lvl</div><div>More 1 of 2</div></div></div></div><div>3GHz~25GHz</div></td></tr></td></tr>				<div><div><div><div>Agilent Spectrum Analyzer - Swept SA</div><div><div>Marker 1 2.6198400000000 GHz</div><div>Trig: Free Run #Atten: 20 dB</div></div><div><div>10 dB/div Log</div><div>Ref 10.00 dBm</div></div><div><div>Mkr1 2.619 8 GHz -66.219 dBm</div><div>Start 30 MHz #Res BW 100 kHz</div><div>Stop 3.000 GHz #VBW 300 kHz Sweep 283.9 ms (1001 pts)</div></div></div><div><div>Peak Search</div><div>Next Peak</div><div>Next Pk Right</div><div>Next Pk Left</div><div>Marker Delta</div><div>Mkr→CF</div><div>Mkr→Ref Lvl</div><div>More 1 of 2</div></div></div></div> <div>30MHz ~3GHz</div> <tr><td colspan="4"><div><div><div><div>Agilent Spectrum Analyzer - Swept SA</div><div><div>Marker 1 24.4720000000000 GHz</div><div>Trig: Free Run #Atten: 20 dB</div></div><div><div>10 dB/div Log</div><div>Ref 10.00 dBm</div></div><div><div>Mkr1 24.472 GHz -57.636 dBm</div><div>Start 3.00 GHz #Res BW 100 kHz</div><div>Stop 25.00 GHz #VBW 300 kHz Sweep 2.103 s (1001 pts)</div></div></div><div><div>Peak Search</div><div>Next Peak</div><div>Next Pk Right</div><div>Next Pk Left</div><div>Marker Delta</div><div>Mkr→CF</div><div>Mkr→Ref Lvl</div><div>More 1 of 2</div></div></div></div><div>3GHz~25GHz</div></td></tr>				<div><div><div><div>Agilent Spectrum Analyzer - Swept SA</div><div><div>Marker 1 24.4720000000000 GHz</div><div>Trig: Free Run #Atten: 20 dB</div></div><div><div>10 dB/div Log</div><div>Ref 10.00 dBm</div></div><div><div>Mkr1 24.472 GHz -57.636 dBm</div><div>Start 3.00 GHz #Res BW 100 kHz</div><div>Stop 25.00 GHz #VBW 300 kHz Sweep 2.103 s (1001 pts)</div></div></div><div><div>Peak Search</div><div>Next Peak</div><div>Next Pk Right</div><div>Next Pk Left</div><div>Marker Delta</div><div>Mkr→CF</div><div>Mkr→Ref Lvl</div><div>More 1 of 2</div></div></div></div> <div>3GHz~25GHz</div>			
<div><div><div><div>Agilent Spectrum Analyzer - Swept SA</div><div><div>Marker 1 2.6198400000000 GHz</div><div>Trig: Free Run #Atten: 20 dB</div></div><div><div>10 dB/div Log</div><div>Ref 10.00 dBm</div></div><div><div>Mkr1 2.619 8 GHz -66.219 dBm</div><div>Start 30 MHz #Res BW 100 kHz</div><div>Stop 3.000 GHz #VBW 300 kHz Sweep 283.9 ms (1001 pts)</div></div></div><div><div>Peak Search</div><div>Next Peak</div><div>Next Pk Right</div><div>Next Pk Left</div><div>Marker Delta</div><div>Mkr→CF</div><div>Mkr→Ref Lvl</div><div>More 1 of 2</div></div></div></div> <div>30MHz ~3GHz</div> <tr><td colspan="4"><div><div><div><div>Agilent Spectrum Analyzer - Swept SA</div><div><div>Marker 1 24.4720000000000 GHz</div><div>Trig: Free Run #Atten: 20 dB</div></div><div><div>10 dB/div Log</div><div>Ref 10.00 dBm</div></div><div><div>Mkr1 24.472 GHz -57.636 dBm</div><div>Start 3.00 GHz #Res BW 100 kHz</div><div>Stop 25.00 GHz #VBW 300 kHz Sweep 2.103 s (1001 pts)</div></div></div><div><div>Peak Search</div><div>Next Peak</div><div>Next Pk Right</div><div>Next Pk Left</div><div>Marker Delta</div><div>Mkr→CF</div><div>Mkr→Ref Lvl</div><div>More 1 of 2</div></div></div></div><div>3GHz~25GHz</div></td></tr>				<div><div><div><div>Agilent Spectrum Analyzer - Swept SA</div><div><div>Marker 1 24.4720000000000 GHz</div><div>Trig: Free Run #Atten: 20 dB</div></div><div><div>10 dB/div Log</div><div>Ref 10.00 dBm</div></div><div><div>Mkr1 24.472 GHz -57.636 dBm</div><div>Start 3.00 GHz #Res BW 100 kHz</div><div>Stop 25.00 GHz #VBW 300 kHz Sweep 2.103 s (1001 pts)</div></div></div><div><div>Peak Search</div><div>Next Peak</div><div>Next Pk Right</div><div>Next Pk Left</div><div>Marker Delta</div><div>Mkr→CF</div><div>Mkr→Ref Lvl</div><div>More 1 of 2</div></div></div></div> <div>3GHz~25GHz</div>							
<div><div><div><div>Agilent Spectrum Analyzer - Swept SA</div><div><div>Marker 1 24.4720000000000 GHz</div><div>Trig: Free Run #Atten: 20 dB</div></div><div><div>10 dB/div Log</div><div>Ref 10.00 dBm</div></div><div><div>Mkr1 24.472 GHz -57.636 dBm</div><div>Start 3.00 GHz #Res BW 100 kHz</div><div>Stop 25.00 GHz #VBW 300 kHz Sweep 2.103 s (1001 pts)</div></div></div><div><div>Peak Search</div><div>Next Peak</div><div>Next Pk Right</div><div>Next Pk Left</div><div>Marker Delta</div><div>Mkr→CF</div><div>Mkr→Ref Lvl</div><div>More 1 of 2</div></div></div></div> <div>3GHz~25GHz</div>											

Test Mode:	802.11n HT20	Test channel :	06
------------	--------------	----------------	----

Agilent Spectrum Analyzer - Swept SA

Display Line -32.65 dBm

PN0: Fast  
IF Gain: Low

Trig: Free Run  
#Atten: 20 dB

SENSE:INT

ALIGN: OFF

05:01:40 PM Jun 02, 2017

TRACE 1 2 3 4 5

TYPE M W W W W W W W

DET P N I I I I I I I I

10 dB/div

Ref 10.00 dBm

Mkr1 2.440 39 GHz  
-12.648 dBm

Center 2.43700 GHz

#Res BW 100 kHz

#VBW 300 kHz

Span 30.00 MHz

Sweep 2.933 ms (1001 pts)

Display

Annotation▶

Title▶

Graticule  
On Off

Display Line  
-32.65 dBm  
On Off

System  
Display▶  
Settings

Channel 06

Agilent Spectrum Analyzer - Swept SA

Marker 1 10.128000 kHz

PN0: Wide  
IF Gain: Low

Trig: Free Run  
#Atten: 20 dB

SENSE:INT

ALIGN: OFF

05:03:06 PM Jun 02, 2017

TRACE 1 2 3 4 5

TYPE M W W W W W W W

DET P N I I I I I I I I

10 dB/div

Ref 10.00 dBm

Mkr1 10.128 kHz  
-60.406 dBm

Start 9.00 kHz

#Res BW 1.0 kHz

#VBW 3.0 kHz

Stop 150.00 kHz

Sweep 134.8 ms (1001 pts)

Peak Search

Next Peak

Next Pk Right

Next Pk Left

Marker Delta

Mkr→CF

Mkr→Ref Lvl

More  
1 of 2

9KHz~150KHz

Agilent Spectrum Analyzer - Swept SA

Marker 1 159.850000 kHz

PN0: Wide  
IF Gain: Low

Trig: Free Run  
#Atten: 20 dB

SENSE:INT

ALIGN: OFF

05:03:39 PM Jun 02, 2017

TRACE 1 2 3 4 5

TYPE M W W W W W W W

DET P N I I I I I I I I

10 dB/div

Ref 10.00 dBm

Mkr1 159.85 kHz  
-71.491 dBm

Start 150 kHz

#Res BW 10 kHz

#VBW 30 kHz

Stop 10.000 MHz

Sweep 94.20 ms (1001 pts)

Peak Search

Next Peak

Next Pk Right

Next Pk Left

Marker Delta

Mkr→CF

Mkr→Ref Lvl

More  
1 of 2

150KHz ~10MHz

Test Mode:	802.11n HT20	Test channel :	06								
<div><div><div><div>Agilent Spectrum Analyzer - Swept SA</div><div><div>Marker 1 21.340000000 MHz</div><div>Trig: Free Run #Atten: 20 dB</div></div><div><div>10 dB/div Log</div><div>Ref 10.00 dBm</div></div><div><div>Mkr1 21.34 MHz -71.426 dBm</div></div><div><div>Start 10.00 MHz #Res BW 100 kHz</div><div>#VBW 300 kHz</div><div>Stop 30.00 MHz Sweep 1.933 ms (1001 pts)</div></div></div><div><div>Peak Search</div><div>Next Peak</div><div>Next Pk Right</div><div>Next Pk Left</div><div>Marker Delta</div><div>Mkr→CF</div><div>Mkr→Ref Lvl</div><div>More 1 of 2</div></div></div></div> <div>10MHz ~30MHz</div> <tr><td colspan="4"><div><div><div><div>Agilent Spectrum Analyzer - Swept SA</div><div><div>Marker 1 2.655480000000 GHz</div><div>Trig: Free Run #Atten: 20 dB</div></div><div><div>10 dB/div Log</div><div>Ref 10.00 dBm</div></div><div><div>Mkr1 2.655 5 GHz -65.423 dBm</div></div><div><div>Start 30 MHz #Res BW 100 kHz</div><div>#VBW 300 kHz</div><div>Stop 3.000 GHz Sweep 283.9 ms (1001 pts)</div></div></div><div><div>Peak Search</div><div>Next Peak</div><div>Next Pk Right</div><div>Next Pk Left</div><div>Marker Delta</div><div>Mkr→CF</div><div>Mkr→Ref Lvl</div><div>More 1 of 2</div></div></div></div><div>30MHz ~3GHz</div><tr><td colspan="4"><div><div><div><div>Agilent Spectrum Analyzer - Swept SA</div><div><div>Marker 1 24.516000000000 GHz</div><div>Trig: Free Run #Atten: 20 dB</div></div><div><div>10 dB/div Log</div><div>Ref 10.00 dBm</div></div><div><div>Mkr1 24.516 GHz -56.184 dBm</div></div><div><div>Start 3.00 GHz #Res BW 100 kHz</div><div>#VBW 300 kHz</div><div>Stop 25.00 GHz Sweep 2.103 s (1001 pts)</div></div></div><div><div>Peak Search</div><div>Next Peak</div><div>Next Pk Right</div><div>Next Pk Left</div><div>Marker Delta</div><div>Mkr→CF</div><div>Mkr→Ref Lvl</div><div>More 1 of 2</div></div></div></div><div>3GHz~25GHz</div></td></tr></td></tr>				<div><div><div><div>Agilent Spectrum Analyzer - Swept SA</div><div><div>Marker 1 2.655480000000 GHz</div><div>Trig: Free Run #Atten: 20 dB</div></div><div><div>10 dB/div Log</div><div>Ref 10.00 dBm</div></div><div><div>Mkr1 2.655 5 GHz -65.423 dBm</div></div><div><div>Start 30 MHz #Res BW 100 kHz</div><div>#VBW 300 kHz</div><div>Stop 3.000 GHz Sweep 283.9 ms (1001 pts)</div></div></div><div><div>Peak Search</div><div>Next Peak</div><div>Next Pk Right</div><div>Next Pk Left</div><div>Marker Delta</div><div>Mkr→CF</div><div>Mkr→Ref Lvl</div><div>More 1 of 2</div></div></div></div> <div>30MHz ~3GHz</div> <tr><td colspan="4"><div><div><div><div>Agilent Spectrum Analyzer - Swept SA</div><div><div>Marker 1 24.516000000000 GHz</div><div>Trig: Free Run #Atten: 20 dB</div></div><div><div>10 dB/div Log</div><div>Ref 10.00 dBm</div></div><div><div>Mkr1 24.516 GHz -56.184 dBm</div></div><div><div>Start 3.00 GHz #Res BW 100 kHz</div><div>#VBW 300 kHz</div><div>Stop 25.00 GHz Sweep 2.103 s (1001 pts)</div></div></div><div><div>Peak Search</div><div>Next Peak</div><div>Next Pk Right</div><div>Next Pk Left</div><div>Marker Delta</div><div>Mkr→CF</div><div>Mkr→Ref Lvl</div><div>More 1 of 2</div></div></div></div><div>3GHz~25GHz</div></td></tr>				<div><div><div><div>Agilent Spectrum Analyzer - Swept SA</div><div><div>Marker 1 24.516000000000 GHz</div><div>Trig: Free Run #Atten: 20 dB</div></div><div><div>10 dB/div Log</div><div>Ref 10.00 dBm</div></div><div><div>Mkr1 24.516 GHz -56.184 dBm</div></div><div><div>Start 3.00 GHz #Res BW 100 kHz</div><div>#VBW 300 kHz</div><div>Stop 25.00 GHz Sweep 2.103 s (1001 pts)</div></div></div><div><div>Peak Search</div><div>Next Peak</div><div>Next Pk Right</div><div>Next Pk Left</div><div>Marker Delta</div><div>Mkr→CF</div><div>Mkr→Ref Lvl</div><div>More 1 of 2</div></div></div></div> <div>3GHz~25GHz</div>			
<div><div><div><div>Agilent Spectrum Analyzer - Swept SA</div><div><div>Marker 1 2.655480000000 GHz</div><div>Trig: Free Run #Atten: 20 dB</div></div><div><div>10 dB/div Log</div><div>Ref 10.00 dBm</div></div><div><div>Mkr1 2.655 5 GHz -65.423 dBm</div></div><div><div>Start 30 MHz #Res BW 100 kHz</div><div>#VBW 300 kHz</div><div>Stop 3.000 GHz Sweep 283.9 ms (1001 pts)</div></div></div><div><div>Peak Search</div><div>Next Peak</div><div>Next Pk Right</div><div>Next Pk Left</div><div>Marker Delta</div><div>Mkr→CF</div><div>Mkr→Ref Lvl</div><div>More 1 of 2</div></div></div></div> <div>30MHz ~3GHz</div> <tr><td colspan="4"><div><div><div><div>Agilent Spectrum Analyzer - Swept SA</div><div><div>Marker 1 24.516000000000 GHz</div><div>Trig: Free Run #Atten: 20 dB</div></div><div><div>10 dB/div Log</div><div>Ref 10.00 dBm</div></div><div><div>Mkr1 24.516 GHz -56.184 dBm</div></div><div><div>Start 3.00 GHz #Res BW 100 kHz</div><div>#VBW 300 kHz</div><div>Stop 25.00 GHz Sweep 2.103 s (1001 pts)</div></div></div><div><div>Peak Search</div><div>Next Peak</div><div>Next Pk Right</div><div>Next Pk Left</div><div>Marker Delta</div><div>Mkr→CF</div><div>Mkr→Ref Lvl</div><div>More 1 of 2</div></div></div></div><div>3GHz~25GHz</div></td></tr>				<div><div><div><div>Agilent Spectrum Analyzer - Swept SA</div><div><div>Marker 1 24.516000000000 GHz</div><div>Trig: Free Run #Atten: 20 dB</div></div><div><div>10 dB/div Log</div><div>Ref 10.00 dBm</div></div><div><div>Mkr1 24.516 GHz -56.184 dBm</div></div><div><div>Start 3.00 GHz #Res BW 100 kHz</div><div>#VBW 300 kHz</div><div>Stop 25.00 GHz Sweep 2.103 s (1001 pts)</div></div></div><div><div>Peak Search</div><div>Next Peak</div><div>Next Pk Right</div><div>Next Pk Left</div><div>Marker Delta</div><div>Mkr→CF</div><div>Mkr→Ref Lvl</div><div>More 1 of 2</div></div></div></div> <div>3GHz~25GHz</div>							
<div><div><div><div>Agilent Spectrum Analyzer - Swept SA</div><div><div>Marker 1 24.516000000000 GHz</div><div>Trig: Free Run #Atten: 20 dB</div></div><div><div>10 dB/div Log</div><div>Ref 10.00 dBm</div></div><div><div>Mkr1 24.516 GHz -56.184 dBm</div></div><div><div>Start 3.00 GHz #Res BW 100 kHz</div><div>#VBW 300 kHz</div><div>Stop 25.00 GHz Sweep 2.103 s (1001 pts)</div></div></div><div><div>Peak Search</div><div>Next Peak</div><div>Next Pk Right</div><div>Next Pk Left</div><div>Marker Delta</div><div>Mkr→CF</div><div>Mkr→Ref Lvl</div><div>More 1 of 2</div></div></div></div> <div>3GHz~25GHz</div>											

Test Mode:	802.11n HT20	Test channel :	11
<div><div><div>Agilent Spectrum Analyzer - Swept SA</div><div>Display Line -32.01 dBm</div><div>10 dB/div</div><div>Ref 10.00 dBm</div><div>Mkr1 2.466 14 GHz</div><div>-11.781 dBm</div><div>Center 2.46200 GHz</div><div>#Res BW 100 kHz</div><div>#VBW 300 kHz</div><div>Span 30.00 MHz</div><div>Sweep 2.933 ms (1001 pts)</div></div><div><div>Align Now</div><div>All</div><div>All but RF</div><div>RF</div></div></div>			
Channel 11			
<div><div><div>Agilent Spectrum Analyzer - Swept SA</div><div>Marker 1 11.961000 kHz</div><div>10 dB/div</div><div>Ref 10.00 dBm</div><div>Mkr1 11.961 kHz</div><div>-59.314 dBm</div><div>Start 9.00 kHz</div><div>#Res BW 1.0 kHz</div><div>#VBW 3.0 kHz</div><div>Stop 150.00 kHz</div><div>Sweep 134.8 ms (1001 pts)</div></div><div><div>Peak Search</div><div>Next Peak</div><div>Next Pk Right</div><div>Next Pk Left</div><div>Marker Delta</div><div>Mkr--CF</div><div>Mkr--Ref Lvl</div><div>More 1 of 2</div></div></div>			
9KHz~150KHz			
<div><div><div>Agilent Spectrum Analyzer - Swept SA</div><div>Marker 1 159.850000 kHz</div><div>10 dB/div</div><div>Ref 10.00 dBm</div><div>Mkr1 159.85 kHz</div><div>-71.344 dBm</div><div>Start 150 kHz</div><div>#Res BW 10 kHz</div><div>#VBW 30 kHz</div><div>Stop 10.000 MHz</div><div>Sweep 94.20 ms (1001 pts)</div></div><div><div>Peak Search</div><div>Next Peak</div><div>Next Pk Right</div><div>Next Pk Left</div><div>Marker Delta</div><div>Mkr--CF</div><div>Mkr--Ref Lvl</div><div>More 1 of 2</div></div></div>			
150KHz ~10MHz			

Test Mode:	802.11n HT20	Test channel :	11								
<div><div><div><div>Agilent Spectrum Analyzer - Swept SA</div><div><div>Marker 1 16.900000000 MHz</div><div>Trig: Free Run #Atten: 20 dB</div></div><div><div>10 dB/div</div><div>Ref 10.00 dBm</div></div><div><div>Mkr1 16.90 MHz -70.820 dBm</div></div><div><div>Start 10.00 MHz #Res BW 100 kHz</div><div><div>#VBW 300 kHz</div><div>Sweep 1.933 ms (1001 pts)</div></div></div></div><div><div>Peak Search</div><div>Next Peak</div><div>Next Pk Right</div><div>Next Pk Left</div><div>Marker Delta</div><div>Mkr→CF</div><div>Mkr→Ref Lvl</div><div>More 1 of 2</div></div></div></div> <div>10MHz ~30MHz</div> <tr><td colspan="4"><div><div><div><div>Agilent Spectrum Analyzer - Swept SA</div><div><div>Marker 1 2.703000000000 GHz</div><div>Trig: Free Run #Atten: 20 dB</div></div><div><div>10 dB/div</div><div>Ref 10.00 dBm</div></div><div><div>Mkr1 2.703 0 GHz -63.968 dBm</div></div><div><div>Start 30 MHz #Res BW 100 kHz</div><div><div>#VBW 300 kHz</div><div>Sweep 283.9 ms (1001 pts)</div></div></div></div><div><div>Peak Search</div><div>Next Peak</div><div>Next Pk Right</div><div>Next Pk Left</div><div>Marker Delta</div><div>Mkr→CF</div><div>Mkr→Ref Lvl</div><div>More 1 of 2</div></div></div></div><div>30MHz ~3GHz</div><tr><td colspan="4"><div><div><div><div>Agilent Spectrum Analyzer - Swept SA</div><div><div>Marker 1 24.516000000000 GHz</div><div>Trig: Free Run #Atten: 20 dB</div></div><div><div>10 dB/div</div><div>Ref 10.00 dBm</div></div><div><div>Mkr1 24.516 GHz -57.295 dBm</div></div><div><div>Start 3.00 GHz #Res BW 100 kHz</div><div><div>#VBW 300 kHz</div><div>Sweep 2.103 s (1001 pts)</div></div></div></div><div><div>Peak Search</div><div>Next Peak</div><div>Next Pk Right</div><div>Next Pk Left</div><div>Marker Delta</div><div>Mkr→CF</div><div>Mkr→Ref Lvl</div><div>More 1 of 2</div></div></div></div><div>3GHz~25GHz</div></td></tr></td></tr>				<div><div><div><div>Agilent Spectrum Analyzer - Swept SA</div><div><div>Marker 1 2.703000000000 GHz</div><div>Trig: Free Run #Atten: 20 dB</div></div><div><div>10 dB/div</div><div>Ref 10.00 dBm</div></div><div><div>Mkr1 2.703 0 GHz -63.968 dBm</div></div><div><div>Start 30 MHz #Res BW 100 kHz</div><div><div>#VBW 300 kHz</div><div>Sweep 283.9 ms (1001 pts)</div></div></div></div><div><div>Peak Search</div><div>Next Peak</div><div>Next Pk Right</div><div>Next Pk Left</div><div>Marker Delta</div><div>Mkr→CF</div><div>Mkr→Ref Lvl</div><div>More 1 of 2</div></div></div></div> <div>30MHz ~3GHz</div> <tr><td colspan="4"><div><div><div><div>Agilent Spectrum Analyzer - Swept SA</div><div><div>Marker 1 24.516000000000 GHz</div><div>Trig: Free Run #Atten: 20 dB</div></div><div><div>10 dB/div</div><div>Ref 10.00 dBm</div></div><div><div>Mkr1 24.516 GHz -57.295 dBm</div></div><div><div>Start 3.00 GHz #Res BW 100 kHz</div><div><div>#VBW 300 kHz</div><div>Sweep 2.103 s (1001 pts)</div></div></div></div><div><div>Peak Search</div><div>Next Peak</div><div>Next Pk Right</div><div>Next Pk Left</div><div>Marker Delta</div><div>Mkr→CF</div><div>Mkr→Ref Lvl</div><div>More 1 of 2</div></div></div></div><div>3GHz~25GHz</div></td></tr>				<div><div><div><div>Agilent Spectrum Analyzer - Swept SA</div><div><div>Marker 1 24.516000000000 GHz</div><div>Trig: Free Run #Atten: 20 dB</div></div><div><div>10 dB/div</div><div>Ref 10.00 dBm</div></div><div><div>Mkr1 24.516 GHz -57.295 dBm</div></div><div><div>Start 3.00 GHz #Res BW 100 kHz</div><div><div>#VBW 300 kHz</div><div>Sweep 2.103 s (1001 pts)</div></div></div></div><div><div>Peak Search</div><div>Next Peak</div><div>Next Pk Right</div><div>Next Pk Left</div><div>Marker Delta</div><div>Mkr→CF</div><div>Mkr→Ref Lvl</div><div>More 1 of 2</div></div></div></div> <div>3GHz~25GHz</div>			
<div><div><div><div>Agilent Spectrum Analyzer - Swept SA</div><div><div>Marker 1 2.703000000000 GHz</div><div>Trig: Free Run #Atten: 20 dB</div></div><div><div>10 dB/div</div><div>Ref 10.00 dBm</div></div><div><div>Mkr1 2.703 0 GHz -63.968 dBm</div></div><div><div>Start 30 MHz #Res BW 100 kHz</div><div><div>#VBW 300 kHz</div><div>Sweep 283.9 ms (1001 pts)</div></div></div></div><div><div>Peak Search</div><div>Next Peak</div><div>Next Pk Right</div><div>Next Pk Left</div><div>Marker Delta</div><div>Mkr→CF</div><div>Mkr→Ref Lvl</div><div>More 1 of 2</div></div></div></div> <div>30MHz ~3GHz</div> <tr><td colspan="4"><div><div><div><div>Agilent Spectrum Analyzer - Swept SA</div><div><div>Marker 1 24.516000000000 GHz</div><div>Trig: Free Run #Atten: 20 dB</div></div><div><div>10 dB/div</div><div>Ref 10.00 dBm</div></div><div><div>Mkr1 24.516 GHz -57.295 dBm</div></div><div><div>Start 3.00 GHz #Res BW 100 kHz</div><div><div>#VBW 300 kHz</div><div>Sweep 2.103 s (1001 pts)</div></div></div></div><div><div>Peak Search</div><div>Next Peak</div><div>Next Pk Right</div><div>Next Pk Left</div><div>Marker Delta</div><div>Mkr→CF</div><div>Mkr→Ref Lvl</div><div>More 1 of 2</div></div></div></div><div>3GHz~25GHz</div></td></tr>				<div><div><div><div>Agilent Spectrum Analyzer - Swept SA</div><div><div>Marker 1 24.516000000000 GHz</div><div>Trig: Free Run #Atten: 20 dB</div></div><div><div>10 dB/div</div><div>Ref 10.00 dBm</div></div><div><div>Mkr1 24.516 GHz -57.295 dBm</div></div><div><div>Start 3.00 GHz #Res BW 100 kHz</div><div><div>#VBW 300 kHz</div><div>Sweep 2.103 s (1001 pts)</div></div></div></div><div><div>Peak Search</div><div>Next Peak</div><div>Next Pk Right</div><div>Next Pk Left</div><div>Marker Delta</div><div>Mkr→CF</div><div>Mkr→Ref Lvl</div><div>More 1 of 2</div></div></div></div> <div>3GHz~25GHz</div>							
<div><div><div><div>Agilent Spectrum Analyzer - Swept SA</div><div><div>Marker 1 24.516000000000 GHz</div><div>Trig: Free Run #Atten: 20 dB</div></div><div><div>10 dB/div</div><div>Ref 10.00 dBm</div></div><div><div>Mkr1 24.516 GHz -57.295 dBm</div></div><div><div>Start 3.00 GHz #Res BW 100 kHz</div><div><div>#VBW 300 kHz</div><div>Sweep 2.103 s (1001 pts)</div></div></div></div><div><div>Peak Search</div><div>Next Peak</div><div>Next Pk Right</div><div>Next Pk Left</div><div>Marker Delta</div><div>Mkr→CF</div><div>Mkr→Ref Lvl</div><div>More 1 of 2</div></div></div></div> <div>3GHz~25GHz</div>											



#### 4.8. Antenna Requirement

##### Standard Applicable

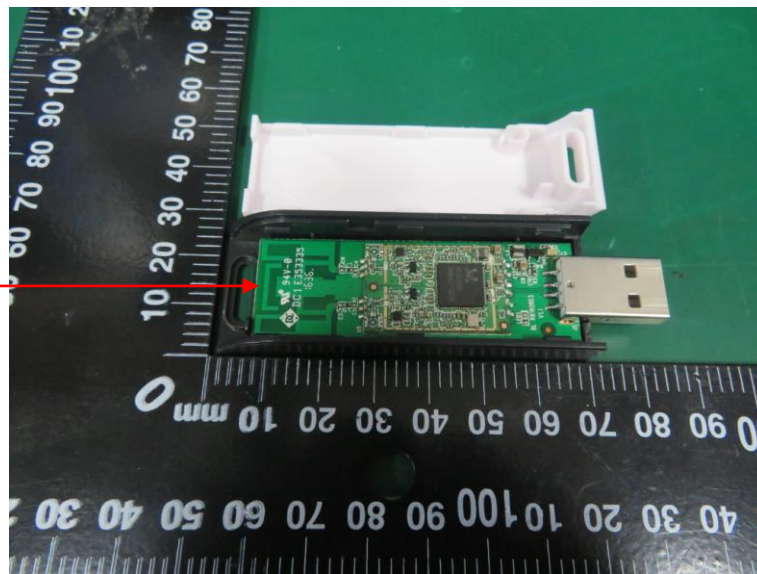
For intentional device, according to FCC 47 CFR Section 15.203, an intentional radiator shall be designed to ensure that no antenna other than that furnished by the responsible party shall be used with the device.

And according to FCC 47 CFR Section 15.247 (c), if transmitting antennas of directional gain greater than 6dBi are used, the power shall be reduced by the amount in dB that the directional gain of the antenna exceeds 6dBi.

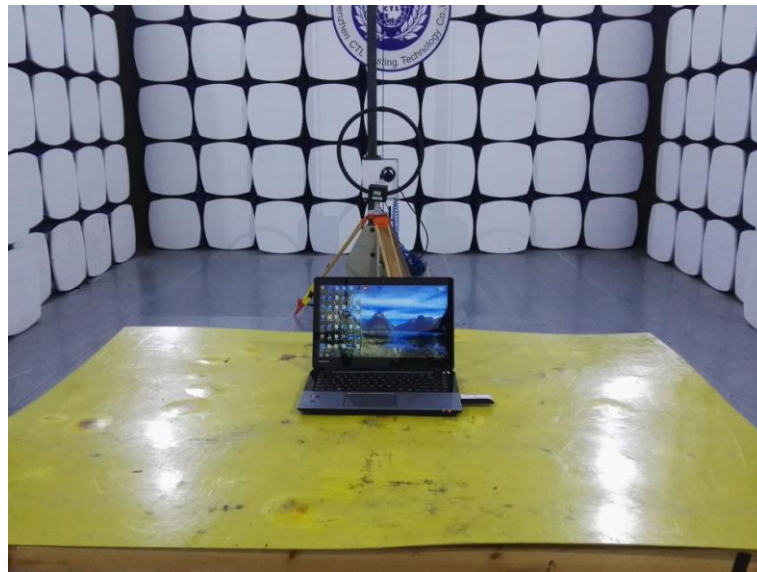
##### **Antenna Information**

The antenna is layout on PCB board, the directional gains of antenna used for transmitting is 1.13dBi.

WIFI  
Antenna



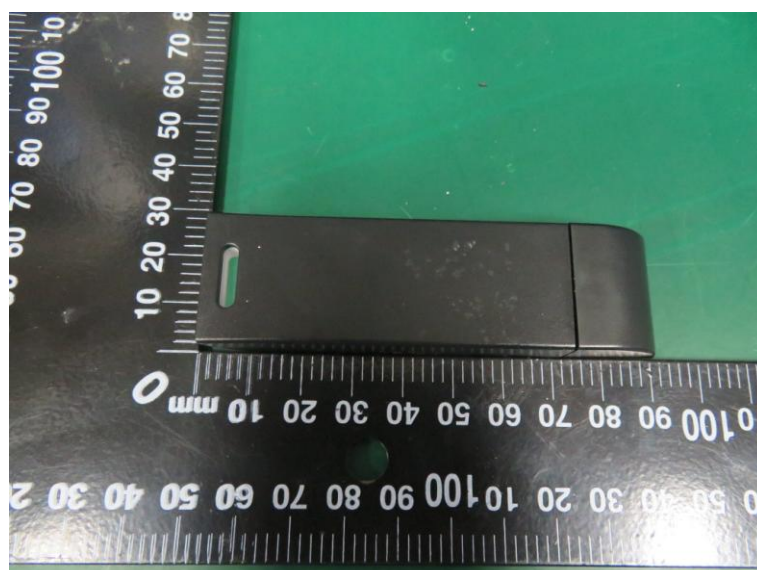
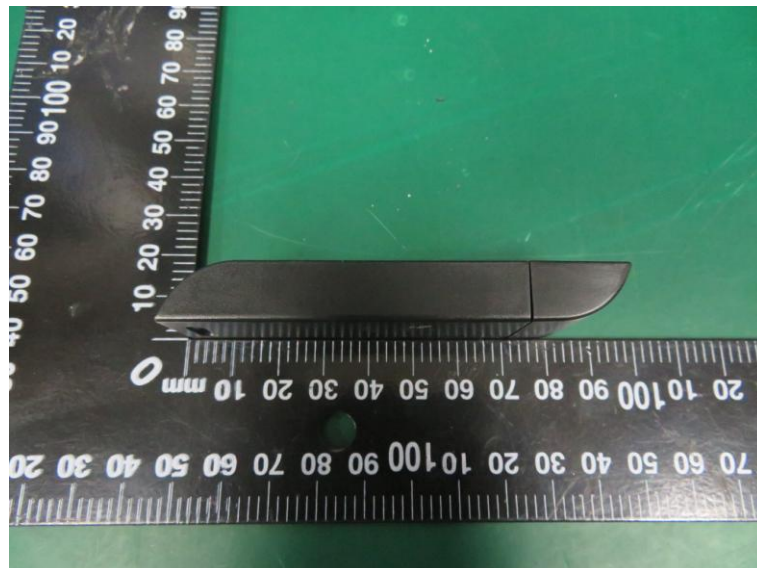
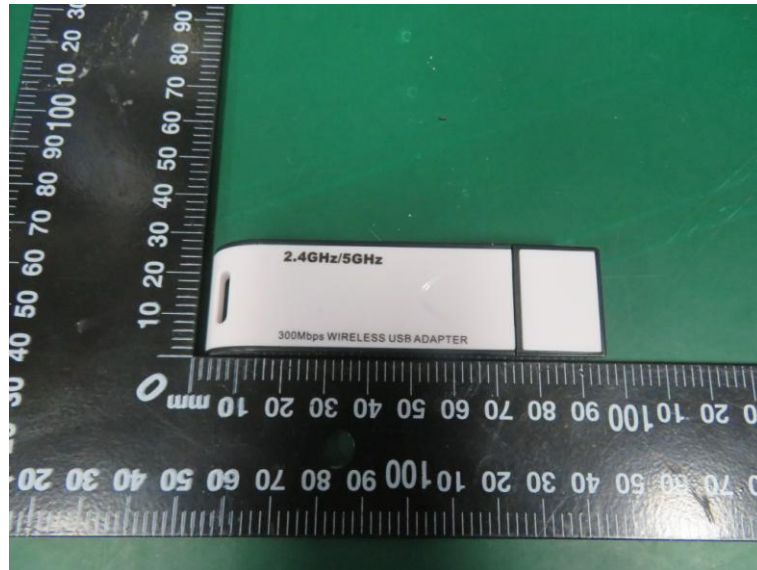
## 5. Test Setup Photos of the EUT



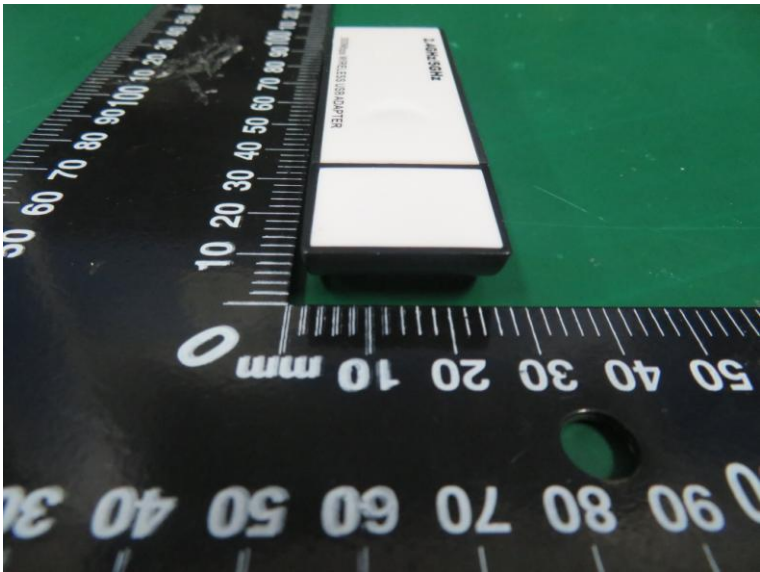
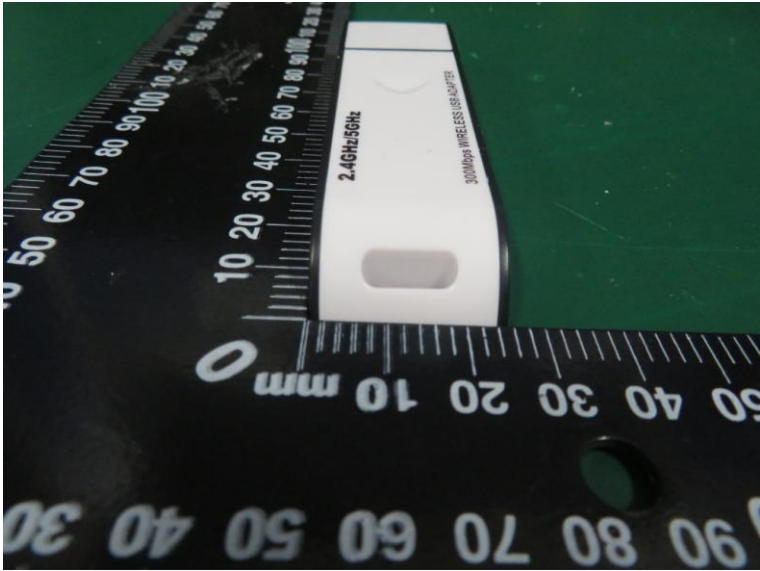
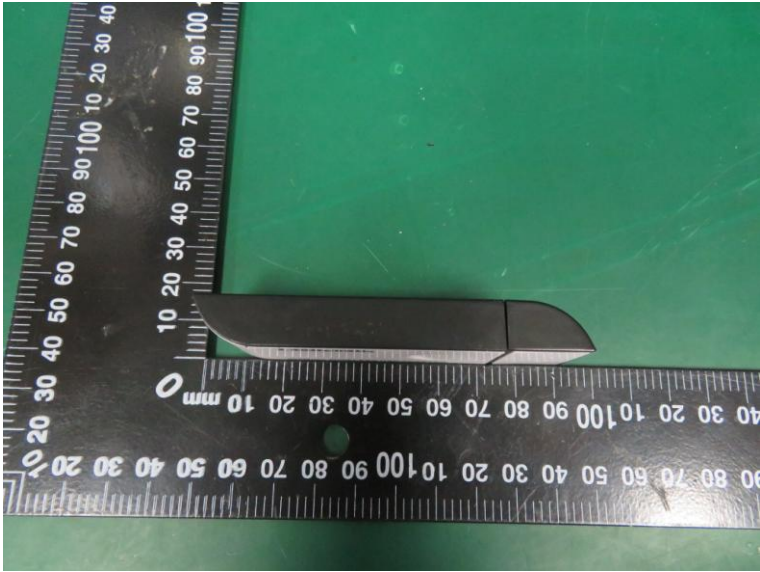


## 6. External and Internal Photos of the EUT

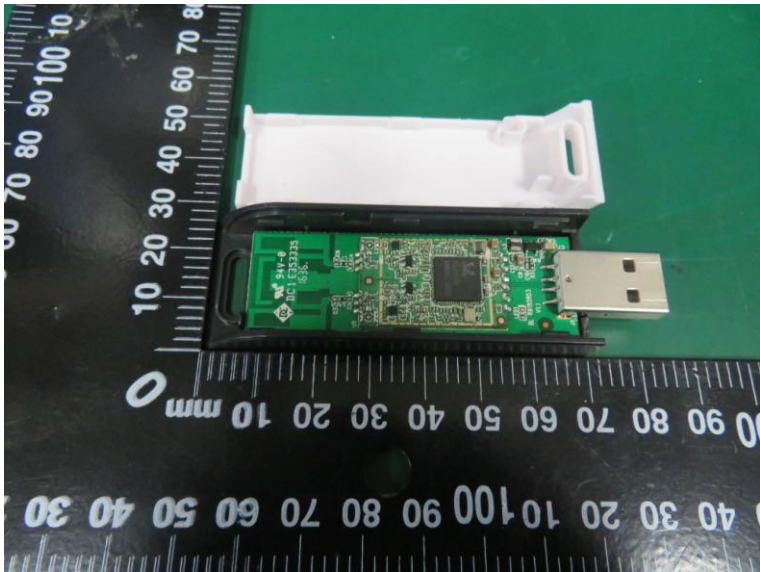
### External Photos



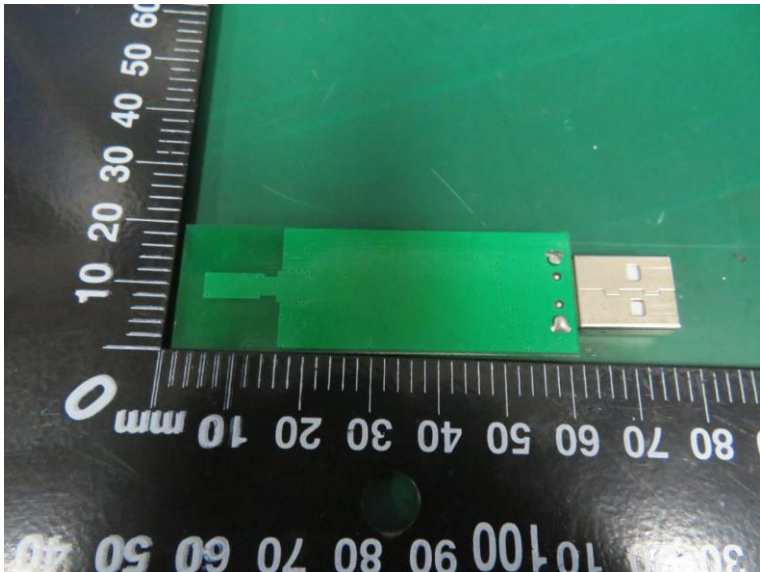
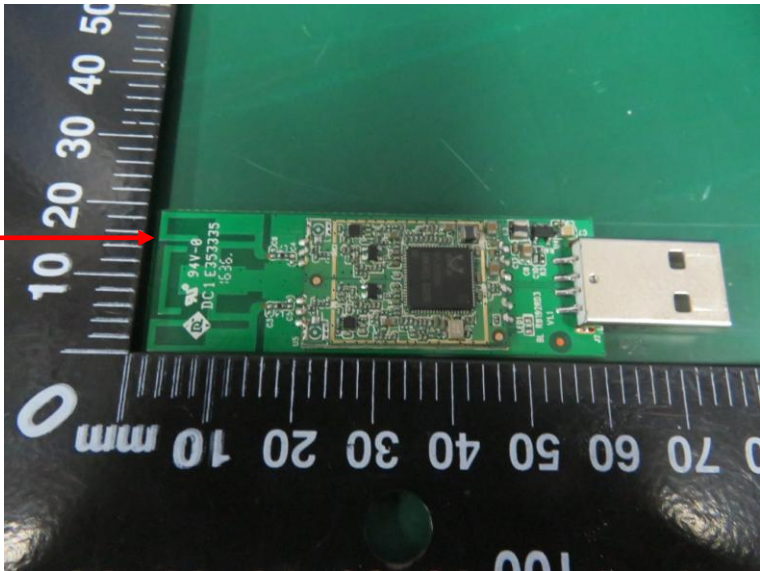




Internal Photos



WiFi Antenna



.....End of Report.....