

Antenna Test Report



顺达成科技

Manufacturer: Shenzhen Shun reach technology Co.,LTD

Manufacturer's address: 4th Floor, Building B5, Xinfu Industrial Park, Chongqing Road, Fuyong Town, Bao 'an District, Shenzhen City

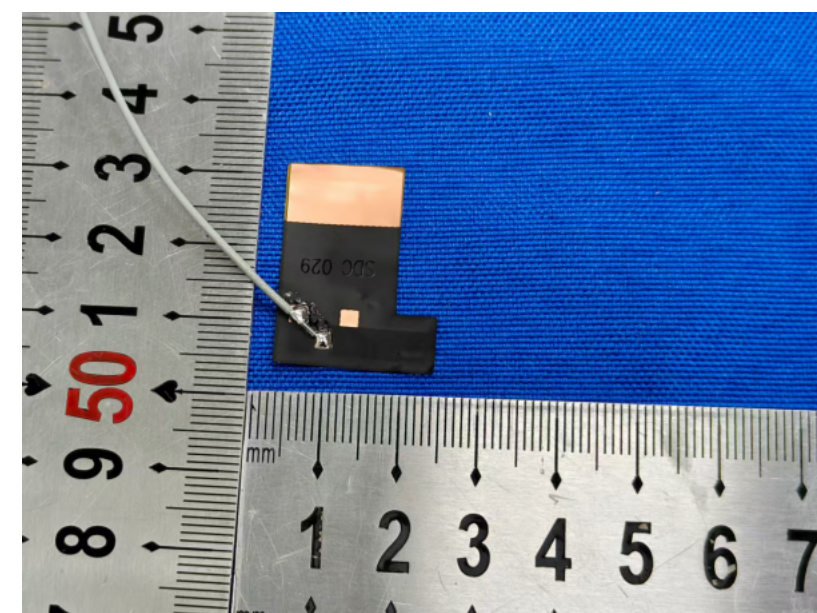
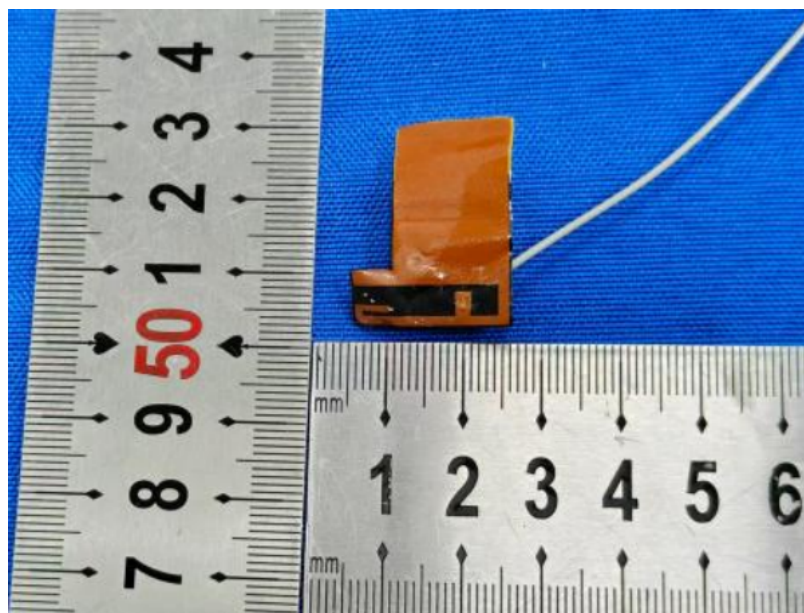
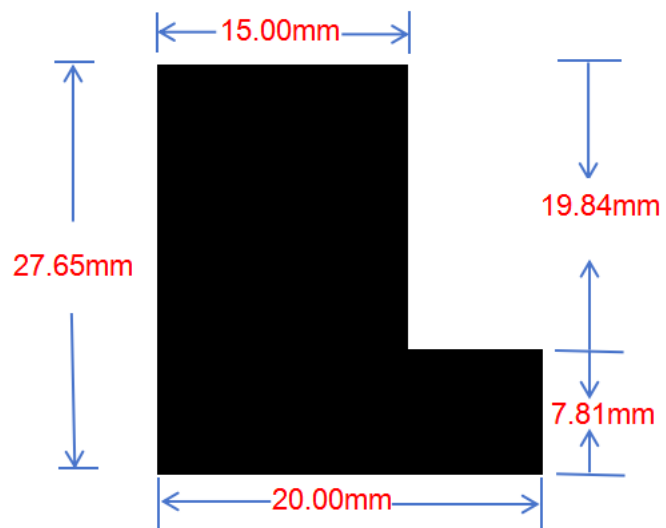
Customer Name: Shenzhen Qiuyu Electronic Co., Ltd

Project Name: QS18-RK3326S

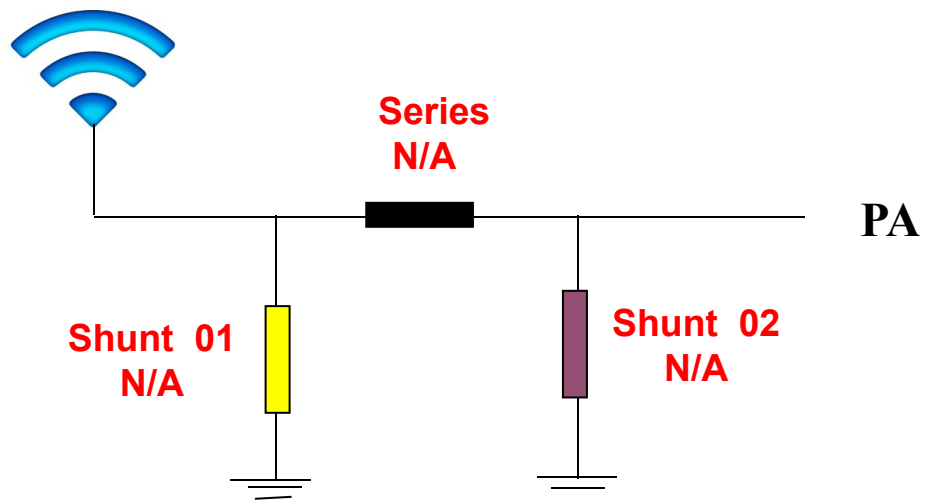
Production date: March 18, 2025



Antenna Size

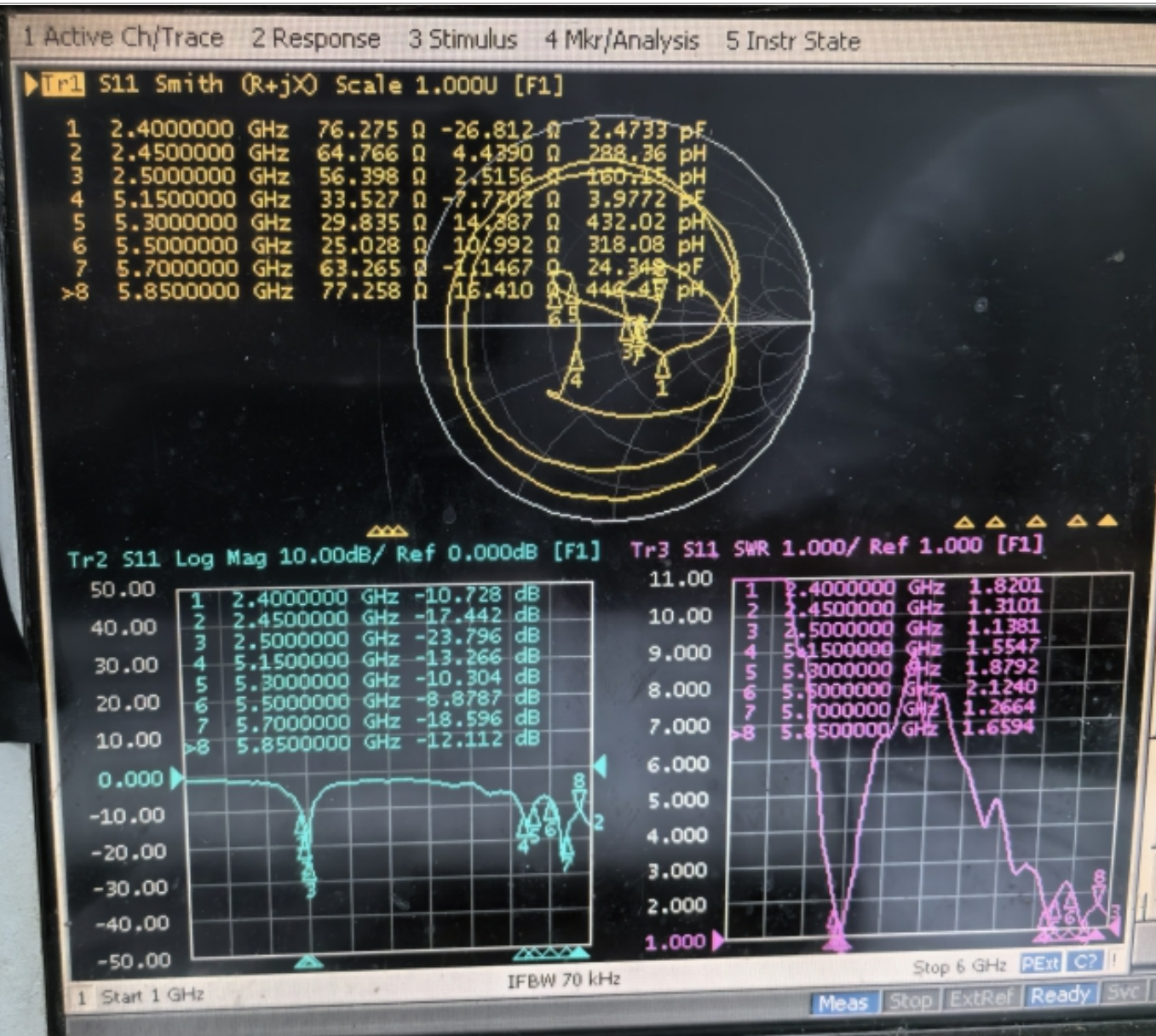


Antenna



Location	Description
Shunt 01	N/A
Series	N/A
Shunt 02	N/A

S11 SWR /Smith/ Log Mag



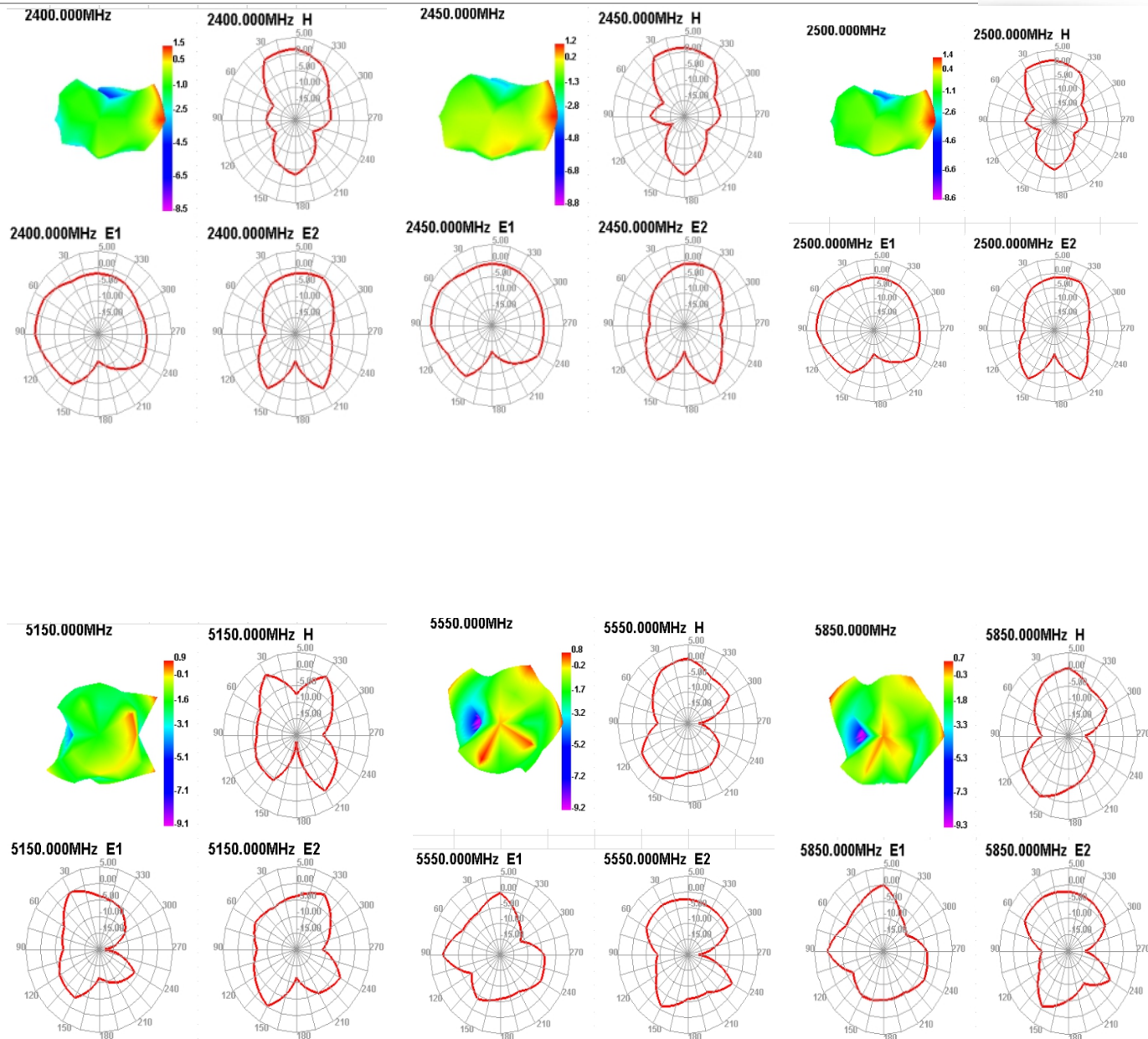
频率 (MHZ)	2400	2450	2500	5150	5300	5500	5700	5850
驻波比	1.82	1.31	1.13	1.54	1.87	2.12	1.26	1.65

频率 (MHZ)	2400	2450	2500	5150	5300	5500	5700	5850
阻抗	76.2 Ω	64.7 Ω	56.3 Ω	33.5 Ω	29.8 Ω	25 Ω	63.2 Ω	77.2 Ω

频率 (MHZ)	2400	2450	2500	5150	5300	5500	5700	5850
回损	-10.7	-17.4	-23.7	-13.2	-10.3	-8.8	-18.5	-12.1

Gain & Efficiency-WiFi

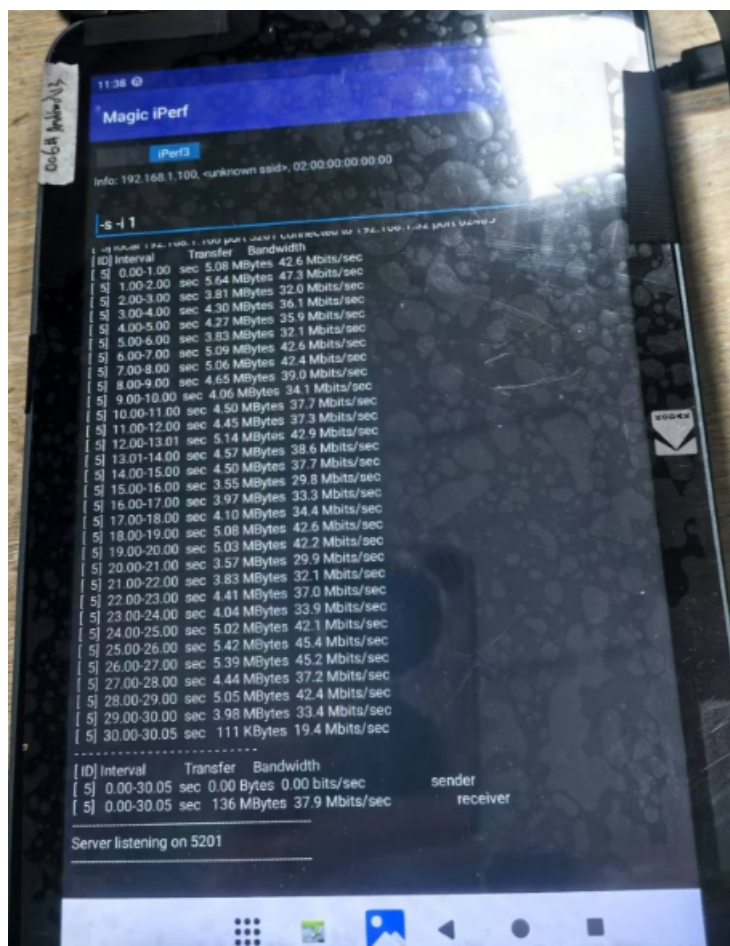
Frequency (MHz)	Efficiency (%)	Peak GAIN (dBi)
2400	43.45	1.48
2450	44.73	1.23
2500	44.22	1.39
5150	44.78	0.92
5350	43.22	1.01
5550	45.52	0.77
5750	45.43	1.35
5850	42.94	0.69



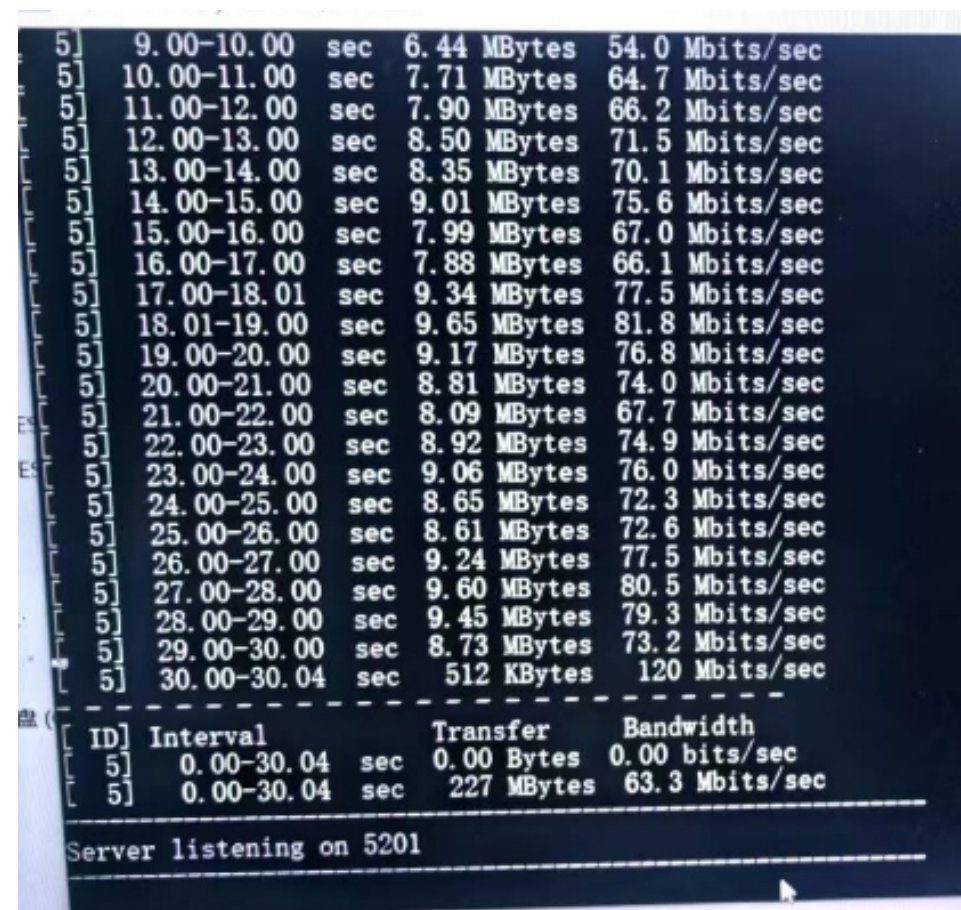
WIFI OTA Data

2.4G WIFI	TRP			TIS		
Channel	CH1	CH6	CH12	CH1	CH6	CH12
802.11 b , 11M	14.97	15.51	15.15	-79.46	-79.13	-78.75
802.11 g , 54M	13.25	13.36	13.17	-67.14	-67.29	-67.31
802.11 n , MCS7 (65M)	12.56	12.18	12.35	-66.22	-66.27	-66.09

5.8G WIFI	TRP			TIS		
Channel	CH36	CH60	CH165	CH36	CH161	CH165
802.11 A , 54M	12.55	12.36	13.18	-67.09	-68.32	-69.84



Download



Upload


```

C:\windows\system32\cmd.exe
5] 9.00-10.00 sec 8.05 MBytes 67.5 Mbits/sec
5] 10.00-11.01 sec 8.77 MBytes 73.1 Mbits/sec
5] 11.01-12.01 sec 8.97 MBytes 75.4 Mbits/sec
5] 12.01-13.00 sec 9.12 MBytes 76.9 Mbits/sec
5] 13.00-14.00 sec 9.21 MBytes 77.0 Mbits/sec
5] 14.00-15.00 sec 8.44 MBytes 70.7 Mbits/sec
5] 15.00-16.00 sec 8.66 MBytes 72.7 Mbits/sec
5] 16.00-17.00 sec 9.53 MBytes 80.0 Mbits/sec
5] 17.00-18.00 sec 8.72 MBytes 73.3 Mbits/sec
5] 18.00-19.00 sec 8.84 MBytes 74.2 Mbits/sec
5] 19.00-20.00 sec 9.65 MBytes 80.9 Mbits/sec
5] 20.00-21.00 sec 8.87 MBytes 74.2 Mbits/sec
5] 21.00-22.00 sec 8.98 MBytes 75.5 Mbits/sec
5] 22.00-23.01 sec 8.51 MBytes 71.0 Mbits/sec
5] 23.01-24.00 sec 8.81 MBytes 74.3 Mbits/sec
5] 24.00-25.00 sec 8.60 MBytes 72.0 Mbits/sec
5] 25.00-26.00 sec 8.63 MBytes 72.5 Mbits/sec
5] 26.00-27.00 sec 9.44 MBytes 79.2 Mbits/sec
5] 27.00-28.01 sec 9.30 MBytes 77.3 Mbits/sec
5] 28.01-29.00 sec 9.09 MBytes 76.6 Mbits/sec
5] 29.00-30.00 sec 8.68 MBytes 73.1 Mbits/sec
5] 30.00-30.08 sec 801 KBytes 83.6 Mbits/sec
-----
[ ID] Interval      Transfer      Bandwidth
[ 5] 0.00-30.08 sec 0.00 Bytes 0.00 bits/sec
[ 5] 0.00-30.08 sec 263 MBytes 73.5 Mbits/sec
-----
Server listening on 5201
  
```

Download

```

Info: 192.168.1.100, <unknown ssid>, 02:00:00:00:00:00
-c 192.168.1.32 -t 30 -i 1 -w 1m
Connecting to host 192.168.1.32, port 5201
[ 4] local 192.168.1.100 port 49288 connected to 192.168.1.32 port 5201
[ ID] Interval      Transfer      Bandwidth
[ 4] 0.00-1.00 sec 12.5 MBytes 105 Mbits/sec
[ 4] 1.00-2.00 sec 14.4 MBytes 121 Mbits/sec
[ 4] 2.00-3.00 sec 12.4 MBytes 104 Mbits/sec
[ 4] 3.00-4.00 sec 14.9 MBytes 125 Mbits/sec
[ 4] 4.00-5.00 sec 14.6 MBytes 123 Mbits/sec
[ 4] 5.00-6.00 sec 13.0 MBytes 109 Mbits/sec
[ 4] 6.00-7.00 sec 15.4 MBytes 129 Mbits/sec
[ 4] 7.00-8.00 sec 15.3 MBytes 128 Mbits/sec
[ 4] 8.00-9.00 sec 14.8 MBytes 124 Mbits/sec
[ 4] 9.00-10.00 sec 13.8 MBytes 116 Mbits/sec
[ 4] 10.00-11.00 sec 14.7 MBytes 123 Mbits/sec
[ 4] 11.00-12.00 sec 14.3 MBytes 120 Mbits/sec
[ 4] 12.00-13.00 sec 13.2 MBytes 111 Mbits/sec
[ 4] 13.00-14.00 sec 12.2 MBytes 102 Mbits/sec
[ 4] 14.00-15.00 sec 14.3 MBytes 120 Mbits/sec
[ 4] 15.00-16.00 sec 14.0 MBytes 117 Mbits/sec
[ 4] 16.00-17.00 sec 14.5 MBytes 121 Mbits/sec
[ 4] 17.00-18.00 sec 13.3 MBytes 112 Mbits/sec
[ 4] 18.00-19.00 sec 13.2 MBytes 110 Mbits/sec
[ 4] 19.00-20.00 sec 14.2 MBytes 119 Mbits/sec
[ 4] 20.00-21.00 sec 13.4 MBytes 113 Mbits/sec
[ 4] 21.00-22.00 sec 13.0 MBytes 109 Mbits/sec
[ 4] 22.00-23.00 sec 12.7 MBytes 107 Mbits/sec
[ 4] 23.00-24.00 sec 12.9 MBytes 108 Mbits/sec
[ 4] 24.00-25.00 sec 13.9 MBytes 117 Mbits/sec
[ 4] 25.00-26.00 sec 12.6 MBytes 105 Mbits/sec
[ 4] 26.00-27.00 sec 13.1 MBytes 110 Mbits/sec
[ 4] 27.00-28.00 sec 12.9 MBytes 108 Mbits/sec
[ 4] 28.00-29.00 sec 15.4 MBytes 130 Mbits/sec
[ 4] 29.00-30.00 sec 13.0 MBytes 109 Mbits/sec
-----
[ ID] Interval      Transfer      Bandwidth
[ 4] 0.00-30.00 sec 412 MBytes 115 Mbits/sec
[ 4] 0.00-30.00 sec 410 MBytes 115 Mbits/sec
-----
iperf Done.
sender
receiver
  
```

Upload



Thanks