

BEASUN

"Beautiful day start  
from morning run"

BEASUN-For Sports

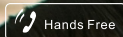


BEASUN

**Bone**

BONE CONDUCTION  
SPORTS HEADPHONE

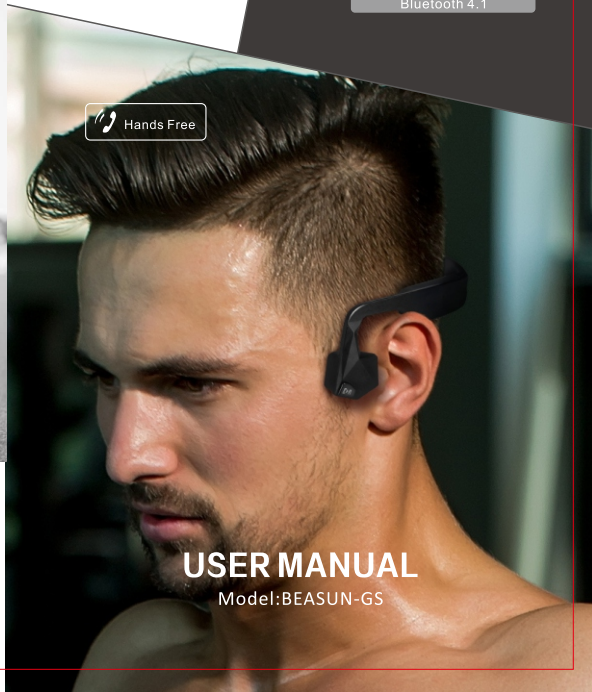
Bluetooth 4.1



Hands Free

**USER MANUAL**

Model: BEASUN-GS



## FCC STATEMENT :

This device complies with Part 15 of the FCC Rules. Operation is subject to the following two conditions:

- (1) This device may not cause harmful interference, and
- (2) This device must accept any interference received, including interference that may cause undesired operation.

**Warning:** Changes or modifications not expressly approved by the party responsible for compliance could void the user's authority to operate the equipment.

**NOTE:** This equipment has been tested and found to comply with the limits for a Class B digital device, pursuant to Part 15 of the FCC Rules. These limits are designed to provide reasonable protection against harmful interference in a residential installation. This equipment generates uses and can radiate radio frequency energy and, if not installed and used in accordance with the instructions, may cause harmful interference to radio communications. However, there is no guarantee that interference will not occur in a particular installation. If this equipment does cause harmful interference to radio or television reception, which can be determined by turning the equipment off and on, the user is encouraged to try to correct the interference by one or more of the following measures:

- Reorient or relocate the receiving antenna.
- Increase the separation between the equipment and receiver.
- Connect the equipment into an outlet on a circuit different from that to which the receiver is connected.
- Consult the dealer or an experienced radio/TV technician for help.

## RF warning statement:

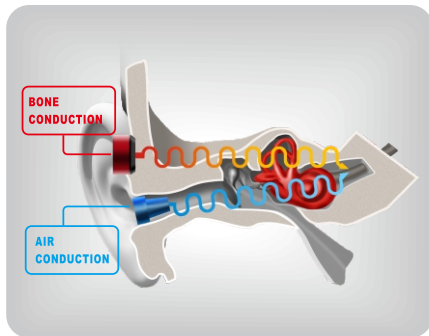
The device has been evaluated to meet general RF exposure requirement. The device can be used in portable exposure condition without restriction.

## WELCOME

Thank you for choosing our GS Bone Conduction Waterproof Neckband Sports Bluetooth Headset.

This guide will help you quickly learn how to use it properly.

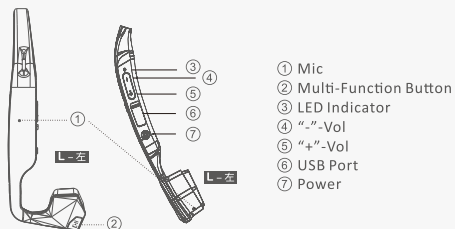
## PRINCIPLE



## Bone conduction Principle

Bone conduction converts electrical signals into different frequency vibration, which conducts into the inner ear cochlear duct directly without passing external auditory canal or middle ear. When reach the cochlear duct, these vibrations can stimulate the auditory nerve in lymph to hear the sound effect.

## PARTS DESCRIPTION

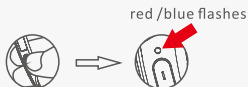


## ACCESSORIES

ITEMS	DETAILS
GS Bluetooth headset	1pcs
Micro USB cable	1pcs
Mute earplug	2pcs
User manual	1pcs

## HOW TO PAIR

- 1.a. In the power off state. Press and hold the power button firmly for 8 seconds until the LED indicator shows red /blue flashes.

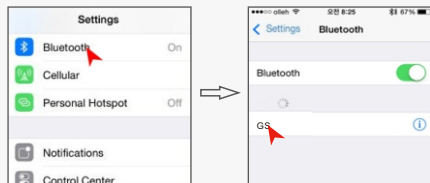


- b. In the power off state, and didn't connect to a device. Press and hold the **MFB** button for 3 seconds until the LED indicator shows red/blue flashes alternatively.

- c. In the power off state, and connected to a device, but not on duty for task. Press and hold the **MFB** button for 6 seconds until the LED indicator shows red/blue flashes alternatively.

- d. In the power off state, and connected to a device, and in the playing or calling mode. Pause or quit the current task first, press and hold the **MFB** button for 6 seconds until the LED indicator shows red/blue flashes alternatively.

2. Locate the Bluetooth menu on the device, search for “GS” and select it to pair.



- When the LED indicator shows blue flashes every 5 seconds, connection is successful.
- In case there is fail, please repeat the steps above.

**\*\*\*Notice\*\*\*** iPhone/iPad and some Android products can display the remaining headset battery power on its notification bar.



## LED INDICATOR

COLOR	STATUS	INDICATE
Red	Flash	Low battery
Red	Solid	Charging/Connected
Blue	Solid	Charging Complete
Red & Blue	Flash alternatively	Pairing
Blue	Single flash every 5 seconds	Connected Successfully
Blue	Double flash every 2 seconds	No connect/Stand-by
Violet	Light for 1 second	Power-on/Power-off

## HOW TO WEAR



## HOW TO CHARGE




- When the LED indicator shows red flashes, it indicates the headset battery is low.
- Connect the headset to a charger or a standard USB port on your PC via the Micro USB cable. The LED indicator will show solid red when charging.
- The LED indicator will turn solid blue when fully charged within 2 hours.

### \*\*\*Notice\*\*\*

Keep the charge port of headset dry.

Do not charge right after exercising or using with water, the sweat or water inside the port could lead to circuit burning while charging.

## ACTIONS

BASIC FUNCTION		
ACTIONS	CONTROL	PROMPT
Power on	Long press the Power Button for 4 seconds	LED (Blue-Red light for 1 second), Sound
Power off (Manually)	Long press the Power Button for 4 seconds	LED (Blue-Red light for 1 second), Sound
Power off (Automatically)	Stand by for 10 minutes/ Battery voltage below 3.0V	
Pairing	Long press the Power Button  for 8 seconds	LED (Blue-Red flash alternatively), Sound
	Long press the Power Button  for 6 seconds	
Connected		LED (Blue single flash every 5 seconds after connected), Sound
Reconnect (Auto)		
Reconnect (Manual)	Press the  button	

MUSIC FUNCTION		
Play/Pause	Press the button <b>⏮</b>	Sound
Previous/Next	Long press the <b>⏮</b> for 2 seconds	Sound
Volume control	Press the “+”/“-”button	Sound (for max/min)

**\*\*\*Notice\*\*\*** Some player software or devices may cause the earphone “play/pause,previous/next”functions fail,then please operate the buttons on device or software to control.

CALL FUNCTION		
ACTIONS	CONTROL	PROMPT
Answer/End	Press the button <b>⏮</b>	Sound
Reject	Hold the button for <b>⏮</b> 2 seconds	Sound
Redial	Quickly double click the <b>⏮</b> button	Sound
Call Switch (phone/earphone)	Long press the <b>⏮</b> Button for 2 seconds during a call	Sound
Volume control	Press the “+”/“-”button	Sound (for max/min)

## SPECS

Play time	1pcs
Standby time	Up to 10 days
Charging time	2 hours
Bluetooth version	4.1,CSR with apt-X
Duty range	10m/ 33 ft.
Compatible Bluetooth profiles	A2DP,AVRCP,HSP,HFP
Frequency range	20Hz-20kHz
Speaker sensitivity	100±3dB
Microphone sensitivity	-45±3dB
Microphone type	Noise cancelling
Speaker type	Bone conduction
Waterproof rating	IPX6

## TROUBLE SHOOTING

ISSUE	POSSIBLE PROBLEM	RESOLUTION
Can't turn on	Not enough battery	Charge
Can't find in list	Out of effective range	Bring device within effective range And reconnect
No Music or call voice	Disconnect or not in Bluetooth mode	Reconnect or switch to Bluetooth mode

## WHAT'S SPECIAL

### MULTI-CONNECTION

- 1.Pair and connect the headset to a device successful, then power off the headset and close the Bluetooth of device.
- 2.Power on the headset, pair and connect to second device well.
- 3.Open the Bluetooth of first device, click to connect to headset.
- 4.Now you can easily switch between two devices.

**\*\*\*Notice\*\*\*** Different performance or setting of devices may cause different priority to connect.

## STORAGE AND MAINTENANCE

- A.1.Store the product in cool and dry place.
- B.1.The recommended working temperature range is 0-45°C ( 32-113°F ) ; Cold/Hot or highly humid environment will reduce the life of battery.
2. Do not use this product during lightning storm.
3. After storage for a long period, please charge before using.
4. Clean the product with a soft of dry cloth.
5. If there is water inside the port, dry it with a soft cloth.
6. Do not bring the product into contact with any sharp object.

## QUALITY WARRANTY

- 1.This product has one year free warranty from date of purchase.
- 2.Any human factors or force majeure that cause the malfunction of the product will not be included in the free warranty.
- 3.For any quality problems,please contact your local distributor and take the product to check, repair or replace in time if need.