

Model

CX-D90H

ELST0055-000A

Thank you for purchasing this product.
Please read through the “Electronic Manual” installed from the software package carefully in advance to ensure proper use of this product.
Also, to make sure that the product is used safely, please read through the “Safety Precautions” in the “READ ME FIRST” booklet. Please store the manuals properly after reading so that they can be referred to whenever necessary.

Place this “Instruction Manual” near the printer and use it as and when needed.

Accessories

- Instruction Manual.....1
- READ ME FIRST1
- Power Cord (2 m)2
- Cleaning Card1
- Card Stacker.....1
- USB 2.0 Cable (2 m)1
- Gloves1
- Tweezers1
- Screws (for locking the accessory space)2
- Cable Ties2

Products Sold Separately

To purchase these items, consult our authorized dealers.
Use the retransfer film or ink ribbon within one year after purchase.

- YMCK (1000 frames/roll) Set, Model: CY-P340A-D*
- YMCKP (750 frames/roll) Set, Model: CY-P35PA-D*
- Ink Ribbon (YMCKK) 750 frames/roll, Model: CY-35K-75D*
- Ink Ribbon (YMCKU) 750 frames/roll, Model: CY-35U-75D*
- Retransfer Film 1000 frames/roll, Model: CY-3RA-100
- Cleaning Kit, Model: CX7000-CKIT2
Magnetic Head Cleaning Card (5 Pcs),
Cotton Swab (5 Large and 5 Small),
Cleaning Wipes (1 Box)
- Cleaning Card, Model: CX210-CC1
10 Pcs/Set

◆ The product name after the * mark varies from customer to customer.
If you are unsure of the details, please contact with the authorized dealer.

Software Package Content

Please download the software package from the website below.
https://www.global.dnp.biz/solution/products/detail/1193109_4130.html

If you are not sure how to obtain it, please consult our authorized dealers.

- Electronic Manual
- Printer Driver
- Status Monitor
- Software Development Technical Information

Content of Electronic Manual

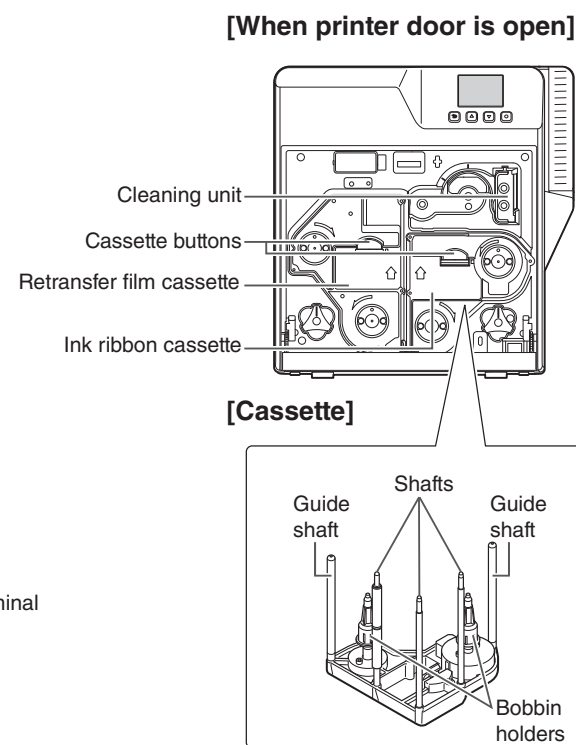
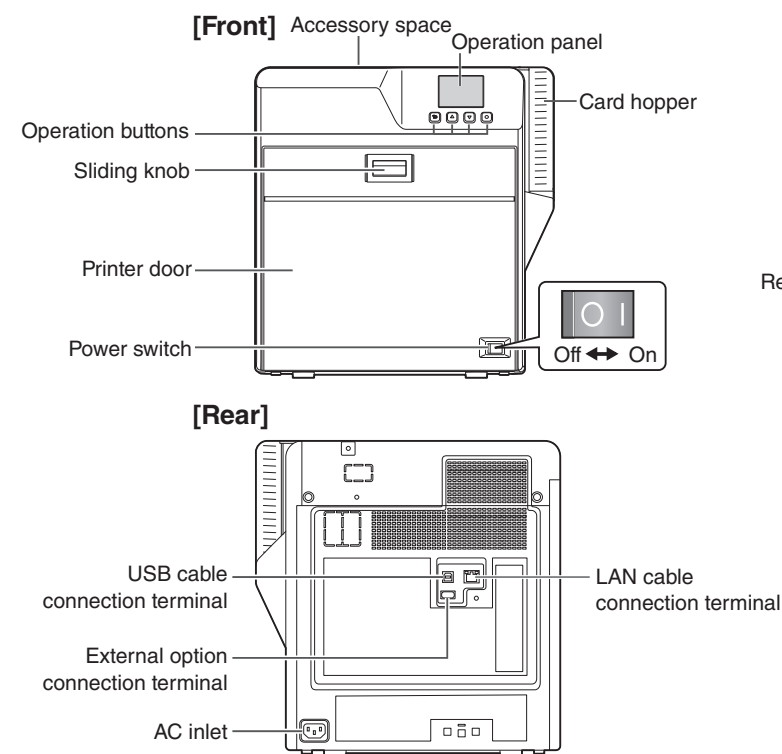
- Before UsePrecautions, disclaimer, etc.
- Setup..... Installation, connection, setting, etc.
- Operating the Printer Procedures for printing cards
- Maintenance..... Cleaning procedures
- Troubleshooting.....Actions to take when troubles occur

Specifications

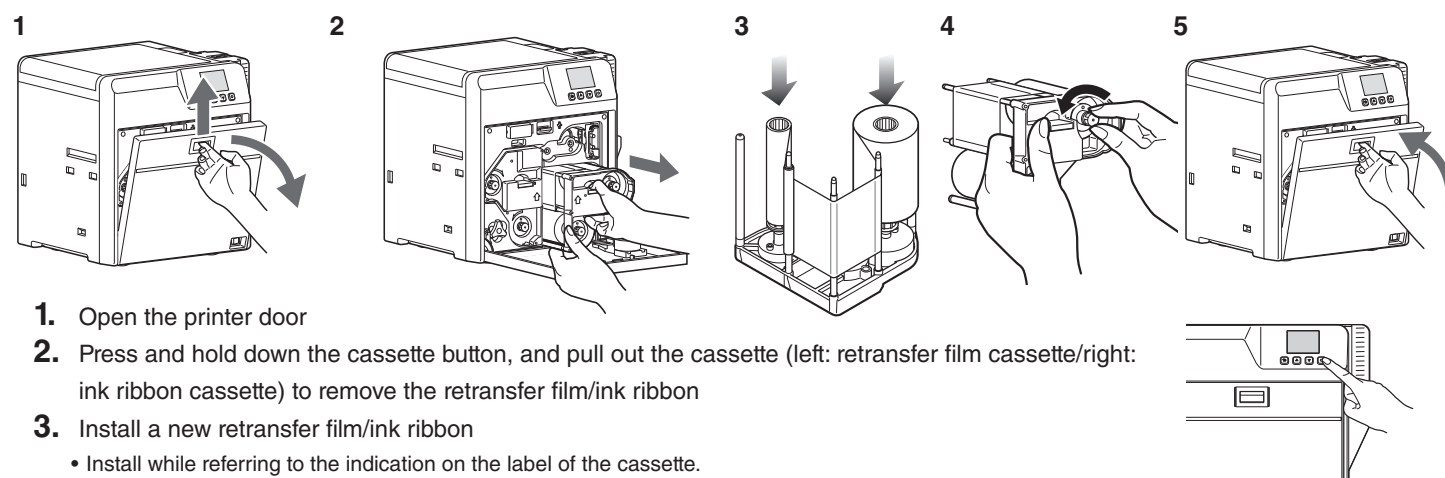
- Operating environment conditions..... Temperature: 15°C to 30°C
(When peel-off ink, UV ink is used: 17 °C to 28 °C)
Humidity: 35 % to 70 % No condensation
(When peel-off ink, UV ink is used: 35 % to 60 %)
- Storage environment conditions
<Printer unit>
Temperature : -15 °C to 55 °C
Humidity : 20 % to 80 %
<Printing media (retransfer film or ink ribbon) / card>
Temperature : 5 °C to 25 °C
Humidity : 40 % to 60 %
- Power supply.....AC 100 V - 120 V, 50 Hz/60 Hz
AC 220 V - 240 V, 50 Hz/60 Hz
- Power consumption..... 310 W
(maximum power when all options are installed)
- Current consumption..... 3.5 A (100 V system)
1.6 A (200 V system)
- Mass..... approx. 14 kg
(double-sided printer, excluding optional built-in items)
- Dimensions 346 mm x 360 mm x 326 mm (W x H x D)

◆ The specifications and appearance of this product may be modified for improvement without prior notice.

Name of Parts

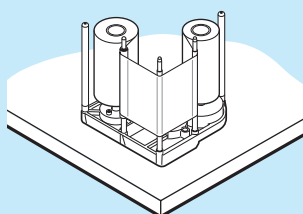


Replacing the Retransfer Film/Ink Ribbon

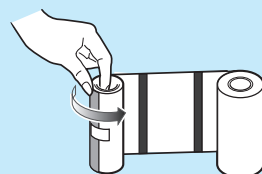


Precautions

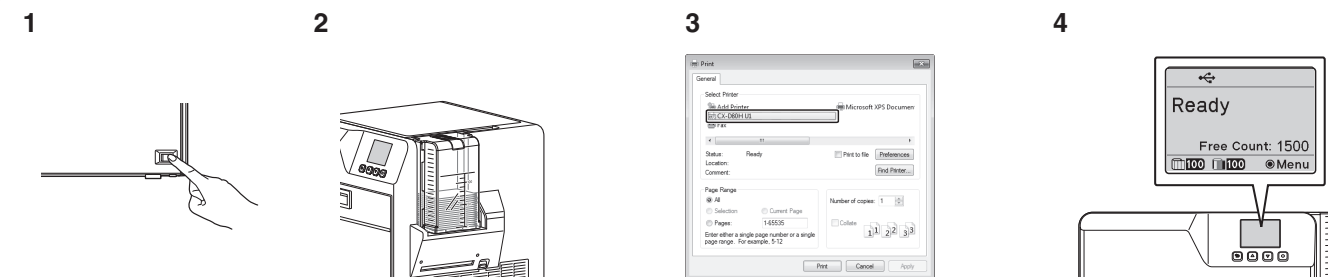
- If the security lock is on, deactivate it. After work is complete, activate the security lock again.
- When installing a used ink ribbon, align the yellow side of the unused ribbon with the arrow indicated on the label of the cassette.
- When installing a used retransfer film, align the unused side of the film with the arrow indicated on the label of the cassette.
- Stand the cassette on a flat surface as illustrated in the diagram.



- The cassette is heavy when the retransfer film/ink ribbon is loaded. To prevent the cassette from dropping during handling, make sure to hold it with both hands.
- Do not touch the retransfer/inked face (the side that faces outward when installed) with your hand. Touching it may cause printing errors. Put on the supplied gloves when handling the retransfer film/ink ribbon.
- Do not perform any work on the printer door. Do not place heavy objects or apply load on the printer.
- When installing a new film, make sure that at least four black lines are wound onto the take-up side.



Printing a Card

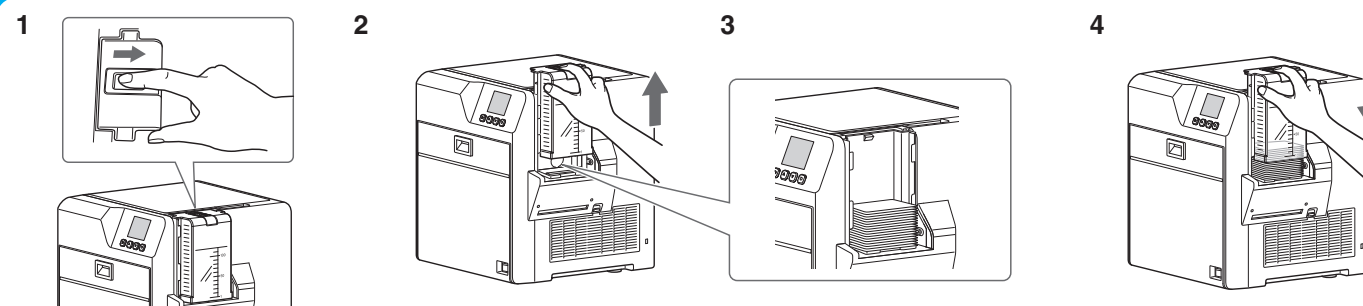


1. Turn on the power
2. Check to ensure that cards are inserted into the card hopper
3. Open the software's print settings screen, and select this printer
4. After ensuring that a [Ready] message appears on the LCD panel of the printer, start printing

Precautions

- If you see an [Initializing...] or [Preheating...] message on the LCD panel of the printer, this means the printer is not ready yet. Printing cannot be performed until a [Ready] message appears.
- Printing the card on the side with the magnetic stripe may cause printing errors or damage to the card's functions. If you want to do so, please consult our authorized dealers in advance.
- For printing using application software prepared by the user, refer to the instruction manual of the corresponding software.

Replenishing Cards

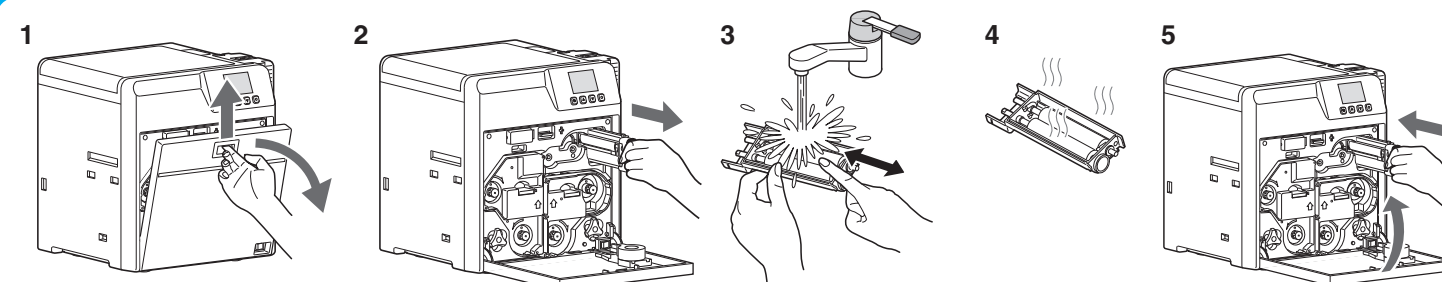


1. Set the card hopper knob to [OPEN]
2. Lift to remove the card hopper cover
3. Align the orientation of the cards, and set them in the printer
4. Install the card hopper cover, and set the card hopper knob to [LOCK]

Precautions

- If the security lock is on, deactivate it. After work is complete, activate the security lock again.
- Do not touch the printing surface of the card. Touching it may cause printing errors. Put on the supplied gloves when handling the cards.
- To prevent card jams from occurring, limit the number of cards stored in the card hopper at any time to about 100 pieces regardless of the card thickness.
- When using new cards, set them after making sure that they are not adhered to each other due to static.
- Align the cards before setting them in the printer. Otherwise, the card hopper cover may not close properly, and this may damage the printer.

Maintenance of Cleaning Roller



1. Open the printer door
2. Remove the cleaning unit
3. Wash the cleaning roller with water
 - Wash the roller with water, and remove any dirt from the surface of the cleaning roller with your finger.
4. Allow the cleaning roller to air dry
5. Set the cleaning unit, and close the printer door

Precautions

- If the security lock is on, deactivate it. After work is complete, activate the security lock again.
- Start work after ensuring that the power has been turned off.
- If the printer is used every day, make sure to clean the cleaning roller daily at the end of the operation.
- Do not wash the cleaning roller with anything other than water or alcohol.
- After washing, allow the cleaning roller to dry completely before installing it to the printer.
- Replace the cleaning unit with a new one after using it for about one year. For details on its replacement, please consult our authorized dealers.