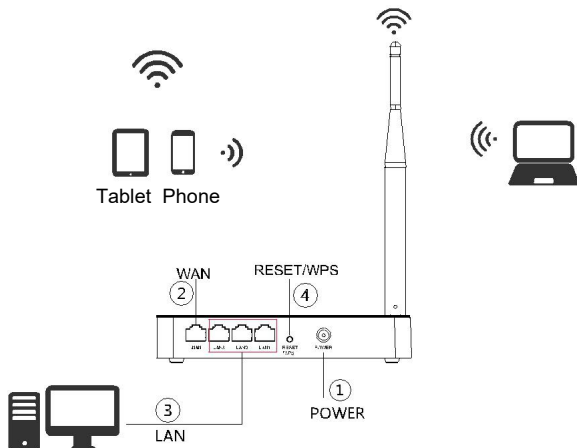


## I Hardware Connection

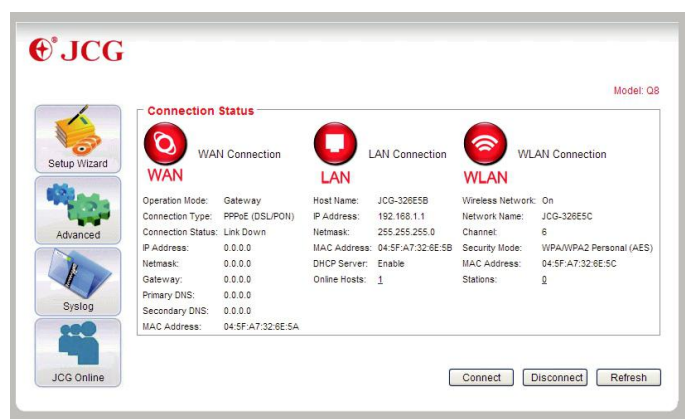
Connect the WAN ports of router to internet ,Connect LAN Ports of router to computer with network cable,Connect DC IN Ports with power adapter ,Powers on.



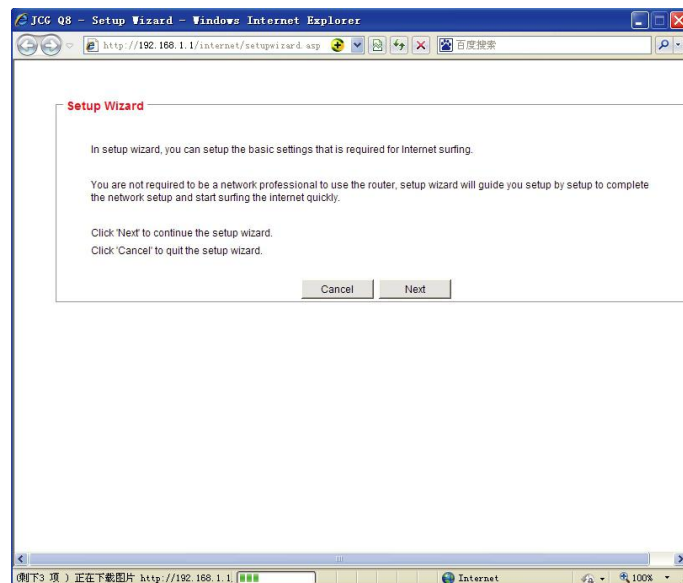
- ① Power Ports. Connect it with power adapter . WAN
- ② Ports,Connect xDLS/Cable Modem/Ethernet LAN
- ③ Ports,Connect Computer ,Laptop Device
- ④ Restore factory settings/One button connecting:Make sure powers on ,Push the button 5-10 Seconds , the system will restore factory setting .otherwise push 1-4 seconds, Connect 2.4G network.(After open WPS Function,the phone which support wps will connect network directly without password )

## II Router setup:

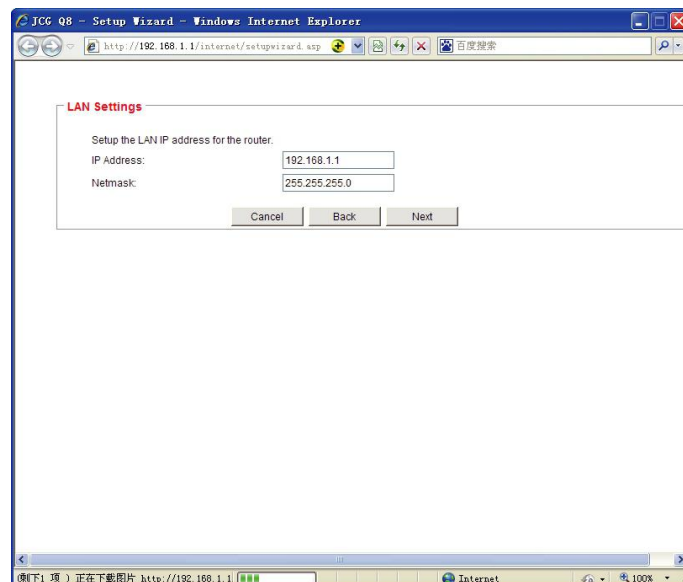
A. Enter 192.168.1.1 in your web browser(do not use Google, enter it in the URL bar).



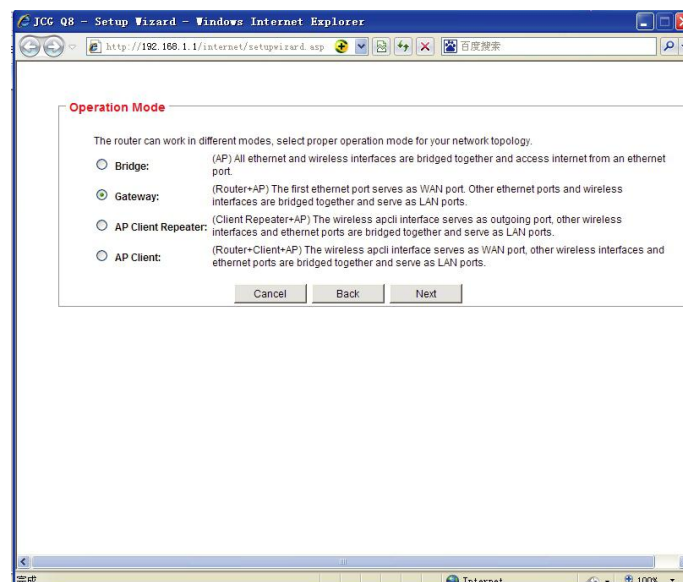
B. Click “Setup Wizard”



C. Set the LAN info



D. Set the operation mode, here we take “Gateway” as an example.



## E. Wireless settings. Set the wireless network name(SSID), wireless key etc.

**Wireless Settings**

In this page, you can set SSID, network mode and channel etc. for the wireless network.

Network Name (SSID): JCG-328ESC

Security Mode: WPA/WPA2 Personal

WPA Algorithm: ☐ TKIP ☒ AES ☐ TKIP/AES

Pass Phrase: gogogogo

Network Name (SSID): Service Set Identifier (SSID) is the identifier of the wireless network. It is displayed in the station's scanning list.

Cancel Back Next

## F. WAN settings. Connection type Static, DHCP, PPPoE are supported.

**WAN Settings**

Several WAN connection types are provided in this router, select proper connection type for your network. Consult your ISP or network administrator if you are not sure which connection type to use.

Connection Type: PPPoE (DSL/PON) Auto Detect

User Name: pppoe\_user

Password: pppoe\_passwd

Confirmed Password: pppoe\_passwd Show

Auto Detect: Detect your WAN connection type automatically.

Static (Fixed IP): You need to setup the IP address, subnet mask, gateway and dns information provided by ISP or network administrator.

DHCP (Auto Config): DHCP server will assign the IP address and other network parameters properly, and the router will be connected automatically.

PPPoE (DSL/PON): You can connect the router to DSL/PON modem, and router will use the username and password to connect internet.

Cancel Back Next

## G. Summary. There will be a summary of all the settings. Go back if there are anything wrong or click Save/Apply to finish the setting.

**Summary**

Summary page lists the settings you've done in the setup wizard. Please confirm your settings before applying.  
**Note:** All of the settings will be discarded if you leave the wizard without applying.

IP Address: 192.168.1.1

Netmask: 255.255.255.0

Operation Mode: Gateway

Network Name (SSID): JCG-328ESC

Security Mode: WPA/WPA2 Personal

Encryption Type: AES

Pass Phrase: gogogogo

Connection Type: PPPoE (DSL/PON)

User Name: pppoe\_user

Password: pppoe\_passwd

Cancel Back Save/Apply

## Frequently Asked Questions (FAQ)

### Q1: What should I do if my handy can not find WIFI signal?

A: Please make sure the router is connected, power and broadband interface has no loose. If everything is normal but still no signal, please try to use computer to set, or restore the router to factory settings. If after restoring factory settings but still no signal, you can restart the router, if it still doesn't work, maybe the router has fault.

### Q2: How to Reset to defaults?

A: While the power is still on, keep pressing the reset button for 7 to 8 seconds, and wait for 1-2 minutes and it will restore to factory settings. ( Please be noted: After restoring the factory settings you need to reset again. )

### Q3: Why cannot my phone enter the Setting Page of Router?

A : Please make sure your Phone is connected to the JCG Router WIFI And make sure you enter the right site in the browser.

### Q4: Why cannot I enter the Setting Page of Router after restarting the Router?

A : After restarting the Router, maybe your phone connect automatically to other WIFI, please make sure your phone is connected to JCG Router WIFI.

### Q5: What should I do if I forget the WIFI password or the username and password of the Login settings Page?

A: Restore factory settings, and then reset the router.

### FCC Statement

This equipment has been tested and found to comply with the limits for a Class B digital device, pursuant to Part 15 of the FCC Rules. These limits are designed to provide reasonable protection against harmful interference in a residential installation. This equipment generates uses and can radiate radio frequency energy and, if not installed and used in accordance with the instructions, may cause harmful interference to radio communications. However, there is no guarantee that interference will not occur in a particular installation. If this equipment does cause harmful interference to radio or television reception, which can be determined by turning the equipment off and on, the user is encouraged to try to correct the interference by one or more of the following measures:

- Reorient or relocate the receiving antenna.
- Increase the separation between the equipment and receiver.
- Connect the equipment into an outlet on a circuit different from that to which the receiver is connected.
- Consult the dealer or an experienced radio/TV technician for help.

This device complies with part 15 of the FCC Rules. Operation is subject to the following two conditions: (1) This device may not cause harmful interference, and (2) this device must accept any interference received, including interference that may cause undesired operation.

Changes or modifications not expressly approved by the party responsible for compliance could void the user's authority to operate the equipment.

This equipment complies with FCC radiation exposure limits set forth for an uncontrolled environment. This equipment should be installed and operated with minimum distance 20cm between the radiator & your body.