



User Manual

QOD Electric Golf Trolley

Version 2.0

QOD Golf International. www.qodgolf.com

Warning: Product Patent Protected, Design Protected, Copyright Protected. All rights Reserved

Please keep a record of your trolley serial number here for future reference

Q	O	D												
---	---	---	--	--	--	--	--	--	--	--	--	--	--	--

Serial Number is located on the back of the bottom chassis.



QOD Golf International. www.qodgolf.com

Warning: Product Patent Protected, Design Protected, Copyright Protected. All rights Reserved

Contents

First Use	4
<i>Box Contents</i>	4
<i>Assembly Instructions</i>	4
<i>General Purpose Use of Your QOD Trolley, FCC Notice</i>	4/5
Using Your Cart	6
Testing your Cart before Use	8
Features	10
Controls	11
Battery and Charger Care	15
Specification	16
Expanding Your QOD Trolley	17
Battery Fitting	19
Golf Bag Fitting	20
Control Functions and Usage of Your QOD Trolley	21
<i>Usage of the Trolley with the Controls</i>	21
Tracking	22
<i>One-Way Bearings</i>	22
<i>Cruise Control</i>	22
Guiding the Trolley in the Most Effective Way	23
<i>Steering</i>	23
General Warnings	24
<i>Folding and Unfolding the Trolley</i>	24
<i>Downhill Terrain</i>	24
<i>Flat Terrain</i>	24
<i>Lifting</i>	24
<i>Frame</i>	24
<i>Wheels</i>	24
Caring For Your QOD Trolley	25
Warranty (Brief)	25
Transportation of your Trolley	26
Maintenance of the Trolley	27
Frequently Asked Questions (FAQs)	28
Warning	29

First Use

Box Contents

- Assembled QOD Trolley
- Lithium Battery with Charger
- QOD Trolley Manual (What you are reading) Pictures in the manual are for illustration purposes. They may vary slightly with your cart but the working principals of the cart are the same.
- Trolley, Remote controller and Battery & Charger Manual

Assembly Instructions

- 1 On unpacking the box, put the battery on charge and verify battery charging information in the battery manual. Make sure the charger does not share the same wall plug as another appliance that is constantly drawing power such as a fridge or an appliance with a lot of power draw such as a dryer. When disconnecting the battery from the charger makes sure the power point is turned off. If you don't you may damage the connectors with power spikes.
- 2 Expand the trolley to its setup position as per instructions in this manual. Please note that the bottom arm on the QOD trolley is designed to be vertical for proper balance and control. The upper arm with the T handle can be adjusted to any height you desire for your playing comfort.
- 3 Put the battery in the cradle. Make sure the trolley is switched off before connecting the battery cable to the trolley
- 4 You must complete the warranty information online at www.qodgolf.com or fill out the warranty card and send it back to us in order to validate your warranty. Please include your email address and give us permission to communicate with you so that we are able to keep you informed about special offers and helpful hints on how to maintain your cart through our newsletters.

General Purpose Use of Your QOD Trolley

The trolley is designed to carry your golf bag on any golf course that you would normally walk or drive on a ride on golf cart. The heavier the bag the more energy it requires to propel the trolley and bag. Use good judgment as to where you want to walk. If you normally walk around a hill or steep incline then do so with the QOD trolley. The harder you work it, the harder you work yourself. The design of this trolley is to transport your golf bag with a minimum of effort. It is not designed to climb steep slopes that you would normally not climb or ride up or down in a riding trolley. The trolley was designed to accommodate a standard golf bag with clubs. Extra-large golf bags with a maximum diameter at the top of 22cm also fit the trolley.

QOD Golf International. www.qodgolf.com

Warning: Product Patent Protected, Design Protected, Copyright Protected. All rights Reserved

The intent of the cart is to assist you to convey your golf bag around the course with a minimum of effort to allow you to concentrate on your game and fully enjoy the game itself. Work with the cart and it will make your golf game so much more effortless and enjoyable.

The battery supplied is a Dual Motor Lithium battery. The charger is specially designed for the type of usage experienced by a golf cart – fully charging before use and discharging during use, unlike a car which has a constant re-charging via the alternator. The charger supplied will only charge your battery until completely charged and will not drain your battery if the charger is disconnected from mains supply. Use of a general automotive style battery charger may compromise the charging capacity of your battery and shorten its life.

Like any buggy used on a golf course, your cart will inevitably collect soil, mud, grass and dirty water during a game. To keep your cart working properly you should regularly clean it as you would any other cart. Remove accumulated dirt and objects from the underside, wheels, axles and any moving parts. Give the frame a wipe over to maintain the powder coated finish. Ensure bolts and nuts are tight and secure and spray any corrosion with a suitable water dispersant spray such as WD40. High pressure washers should not be used as water may penetrate the electrical components and bearings and render the cart inoperative.

Important Notice:

The pictures in this manual are for illustrative purposes only and may vary from the actual model purchased. Model variations may occur as new models and upgrades and enhancements are released over time. The principles of the instructions however are unchanged. If you are ever unsure of any instruction please call your local distributor or call QOD::® in Australia on +611300787924. Email enquiries are also welcome, our email address is info@QODGolf.com. If you need us to call you or we need to discuss your concern in person, please include a contact phone number and we will return your call to anywhere in the world.

FCC Notice:

This equipment has been tested and found to comply with the limits for a Class B digital device, pursuant to part 15 of the FCC Rules. These limits are designed to provide reasonable protection against harmful interference in a residential installation. This equipment generates, uses and can radiate radio frequency energy and, if not installed and used in accordance with the instructions, may cause harmful interference to radio communications. However, there is no guarantee that interference will not occur in a particular installation. If this equipment does cause harmful interference to radio or television reception, which can be determined by turning the equipment off and on, the user is encouraged to try to correct the interference by one or more of the following measures:

Reorient or relocate the receiving antenna.

Increase the separation between the equipment and receiver.

Connect the equipment into an outlet on a circuit different from that to which the receiver is connected.

Consult the dealer or an experienced radio/TV technician for help.

Caution: Any changes or modifications to this device not explicitly approved by the manufacturer could void your authority to operate this equipment.

This device complies with part 15 of the FCC Rules. Operation is subject to the following two conditions: (1) This device may not cause harmful interference, and (2) this device must accept any interference received, including interference that may cause undesired operation.

QOD Golf International. www.qodgolf.com

Warning: Product Patent Protected, Design Protected, Copyright Protected. All rights Reserved

Using your cart

Your QOD:® Q1; Q2; Q3 Walking Electric Cart is designed to maximise your golfing pleasure and minimise exertion not directly related to the game itself. The following guide will help you to get the maximum performance out of your cart.

- Be alert and act responsibly at all times while operating your cart , just as you would when operating a riding cart, motor vehicle or any other type of machinery. We do not recommend operating your cart under the influence of alcohol or any other recreational drug.
- Do not operate the cart using the remote control in narrow or difficult locations. When manoeuvring your cart in enclosed areas, such as car parks, locker rooms, pro-shops or areas where pedestrian traffic creates an obstacle, operate your cart in free-wheeling mode with power turned to Off.
- **Always ensure the cart power switch is turned to the Off position when you park and leave the cart for any reason, either on or off course.**
- With its optimized balance and straight front wheel the cart has extraordinarily narrow and responsive turning and manoeuvring abilities, however it may react unexpectedly to uneven weight distribution or steep slope variations where it follows the gradient of the slope. To avoid such occurrences ensure that the weight in your bag is distributed evenly by moving heavy items to both sides, or shifting the bag on the cart.
- When operating your cart by remote control anticipate the slope of the course in order to avoid frequent corrections in directions. In some extreme environments, such as very uneven terrain, steep hills, narrow and/or sloped cart paths, muddy areas, close to bunkers and hazard, around bushes and trees, it is recommended to operate the cart via manual control in order to prevent any collisions, damage or the need for complicated direction correctional manoeuvres.

Flat Terrain

- On flat fairways you will most likely walk along beside or behind the cart. The cart will drive in a straight line by itself, but you should control the cart and never operate the cart faster than you would normally walk.
- If the terrain is undulating or the surface is uneven, ensure you keep hold of the cart handle to avoid the cart veering should it encounter an unexpected bump or rut.

Downhill Terrain

- When travelling down a slope control the cart by reducing the forward speed and use the motor and gearbox for braking.
- Do not allow the cart to go downhill unaided as it could accelerate and exceed the remote controllers signal distance.

Going Backwards

- If you need to pull the cart backwards, the cart needs to be put into free-wheeling mode. To activate the free wheeling mode turn the main switch to "Off" or (0). The cart can now be pulled or pushed manually without resistance. The cart is not designed to be operated in this manner for extended distances.
- Power is not required for the cart to be operated in free-wheeling mode.

Seat

- When using the optional seat, be sure the seat base is firmly on the turf and that your seating position is balanced so as not to cause the buggy to become unstable. The seat will automatically lift when you stand up.

QOD Golf International. www.qodgolf.com

Warning: Product Patent Protected, Design Protected, Copyright Protected. All rights Reserved

Tracking

- Tracking is set at the factory, however it may be impacted by the weight and positioning of your bag and club. Your cart is equipped with a tracking adjustment system that allows you to adjust the tracking if required. Note that tracking adjustments should be done on a flat, level grass surface as would be found on most fairways.

Lifting

- When lifting the cart or battery at any time, lift with your legs and not with your back to help prevent injury.
- **Never lift or pull on the electrical cable** between the upper and lower arms. This is not a handle and excessive pulling on this cable can cause the wires to be detached from the handle or controller unit and render the cart inoperable.
- **Always tighten the knuckle knobs** in both the extended and collapsed position. Make sure the teeth in the round knuckles mesh before tightening the lock nut. Failure to tighten the locking nut can cause damage to the knuckle assembly during transit.
- Take care when folding the cart to avoid catching your hand or clothes between the frame and arms.

Frame

- Never stand on the frame or base of the cart. The weight of a person or even a large child could cause the frame to bend or the axles to be damaged. The cart is designed for the average weight of a fully equipped golf bag and clubs and is not suitable for conveying a passenger.

Testing Your cart Operations

Before using your cart, test it's operations to ensure it is operating correctly.

Test the cart power supply by turning the **On/Off** switch to the **On** position – all control lights should come on and the cart should be operable by both the manual control on the handle and the optional remote control.

It is recommended that you familiarise yourself with the handle and remote control functions before using the cart for the first time.

Manual controls showing speed control rheostat



Test Environment

Select an open and safe suitable location free of obstructions to perform your tests. Do not test your cart near traffic, parked cars, bodies of water, steep slopes or anywhere the cart could cause damage or be damaged in the event of a control failure.

Manual Control Operation

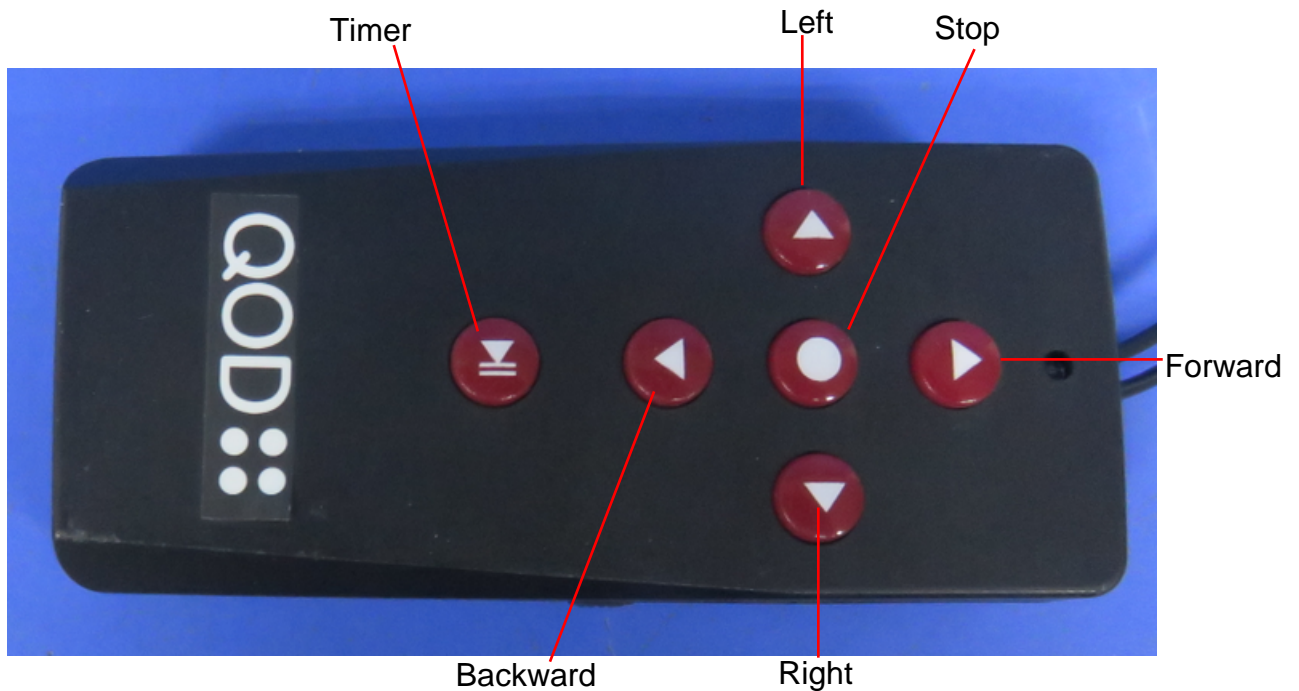
Test the manual function first.

Turn the main switch to the **On** position. The manual functions of the cart are controlled through the rheostat control wheel on the right side of the handle. Turning the wheel forwards will increase the forward speed of the cart. Turning the wheel backwards will slow or stop forward movement of the cart.

Remote Control Operation

Ensure you remain close to the cart at all times while testing remote operations and familiarizing yourself with the remote control functions

Ensure the rheostat control wheel is in the off position and turn the main switch to the **On** position.



Pressing the Forward or Backward arrows will initiate movement in the chosen direction. Pressing the arrow again will increase the speed.

To stop the cart press the button in the middle of the remote or turn the cart power off with the 'OFF' button.

To turn the cart either left or right press the left or right buttons respectively. The cart will continue to turn in the chosen direction whilst the turn button is depressed.

The cart reacts immediately to any turn commands, so practice will assist you to best judge the turning input required to perform the direction change manoeuvres.

To move your cart forward automatically in increments of 10 metres (up to 40 metres), press the Timer button as needed.

Note that turning and overall performance of the cart will be affected by the operating surface (grass, asphalt, concrete) and the weight of the cart (with or without golf bag).

Operational Range of the Remote controller

The remote controller is designed to have a maximum range of between 40-80 meters, depending on terrain. It is recommended that the working limit for operation be no more than 30 metres and a maximum of 50 metres to ensure visual contact is maintained with the cart at all times. Operation of the cart beyond this distance may allow your cart to collide with obstructions, fellow golfers or fall into hazards not otherwise visible.

An additional safety feature of this cart is that it will stop moving if it does not receive a signal from the remote control at least every 60 seconds. This reduces the possibility of your cart travelling outside of your range of control or ending up in a lake or other hazard.

QOD Golf International. www.qodgolf.com

Warning: Product Patent Protected, Design Protected, Copyright Protected. All rights Reserved

Features

- Telescoping technology folds to the smallest footprint (27 cm x 30 cm x 42 cm)
- Weighing only approximately 11kg and varies with accessories
- USB Connection for your electrical appliances.
- Silent and powerful 180 watt motor - for cruising around those rough, rugged, hilly courses
- Long lasting LiFePO4 lithium battery with battery case and charger
- Four wheels for perfect balance
- Floatation Rubber tyres with gripping thread for smooth operation on the roughest of courses
- Front tires adjust in for storage and out for stability during use
- Folds with ease in seconds - with no essential separate parts to attach except the battery
- Simple to operate and steer
- Variable speeds - match it to your walking pace
- Cruise control for flat or gradual sloping fairways
- Comfortable for right or left-hand users
- Solid slope performance
- Handle adjusts up and down - perfect for golfers of any height
- Minimum boot space required (Fit four easily in the boot of a full size car.)
- Frame is constructed from powder coated aluminum - high grade bolts, grips and fasteners throughout for long dependable use
- Sure lock ratchet, locks handle into operating position
- Stringently tested in Australia, United States and the United Kingdom
- Low maintenance
- Distant control with countdown feature
- Water resistance (not water proof)
- Optional Remote Control features, Currently forward and reverse control. Soon to be released is with complete navigation using the same remote controller.

Controls

Your cart has two modes of operation – manual controls through the T-handle control panel and remote operation by use of the remote transmitter if you have that option.

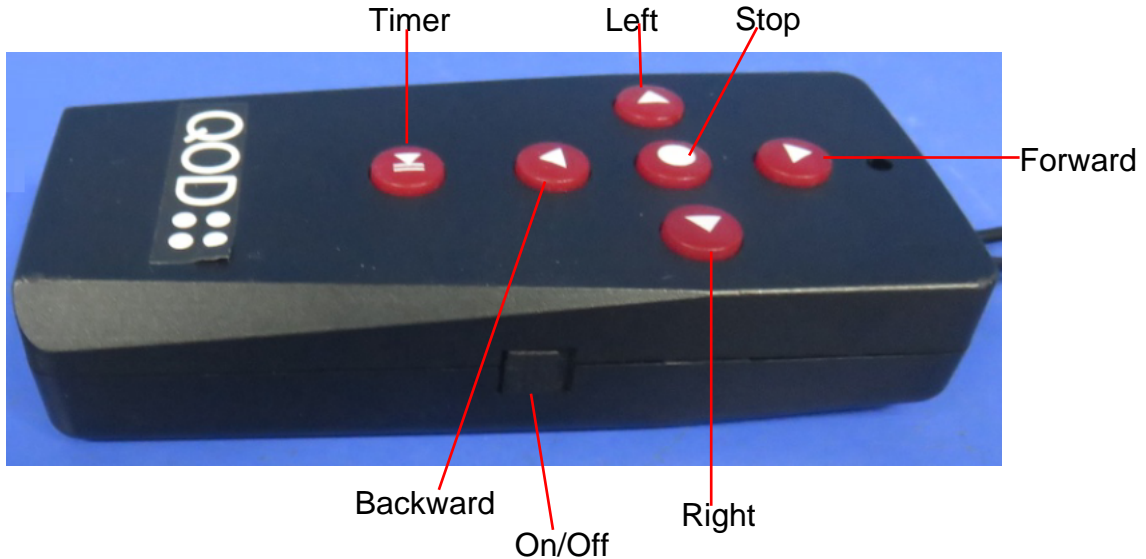
Manual Handle Controls

- The main power switch (green) activates/de-activates the cart
- The LED light on top of handle control indicates if the power is on the cart.
- A flashing red light indicates the battery is out of power
- The rheostat speed control knob lets you vary the speed to the desired pace
- The timer advance function can be activated by using the distance control buttons. Press 10s to send the cart approx 10 metres. Press 20s to send the cart approx 20 metres. Press 30s to send the cart approximately 30 metres.

Distance Function



Remote Transmitter Controls



Functions

- **Stop Button** : The red button in the middle of the directional arrows is the stop button – pressing this will stop the cart regardless of the direction of travel
- **ON/OFF Switch**: Located on the right side of the remote for turning remote on and off. (UP= ON & DWN = Off)
- **Timer**: 10, 20, 30 metres, Stop (same as manual control timer function)
- **Forward Arrow**: Pushing the forward arrow will set the cart in forward motion. – 5 Speed and speed can be adjusted to slower with Backward Arrow
- **Left Arrow**: initiates left turns. When the arrows are released the cart stops turning and continues straight with the original speed prior to turning.
- **Right Arrow**: same as left arrow function
- **Backward Arrow**: Pressing the back arrow will set the cart in backward motion - 5 Speed and speed can be adjusted to slower with Forward Arrow

Maintaining your remote

- Change the remote control batteries once the indicator LED gets weak
- The remote control uses two commonly available 1.5V AAA batteries.
- It is recommended to keep a set of extra batteries safely ready as replacement if you need it. We suggest keeping it in a sealed plastic container.
- To change the batteries open up the battery compartment cover and place the batteries according to the diagram in the battery compartment
- The remote control system is designed so it does not interfere with other remote controlled electric carts.
- The maximum range of the remote control varies between 40-80 metres.
- **It is strongly recommended to operate the cart at a maximum range not exceeding 50 metres in order to prevent the loss of control of the unit**

Replacing Remote Transmitter Batteries

- Open the slide cover in the rear of the remote transmitter unit
- Following the guide inside the compartment, replace both batteries with 2 new AAA 1.5 volt alkaline or lithium batteries.

Replacing Remote controller.

The Remote controller needs to be returned to your QOD product . Each remote control handset is unique to each QOD.

To tune in your remote control follow these procedures.

Be careful to do this procedure in open space to allow the remote to work and to avoid knocking into something when the remote control connects to the cart.

- Connect the battery to the QOD Cart and do not turn on the power to the QOD cart.
- Turn on the power to the Remote handset.
- Press and hold the forward button of the remote handset, the red led light on the handset should be illuminated
- Whilst holding the remote with the led light on, turn on the QOD trolley at the T handle.
- Keep holding the remote control led light on.
- Test all operations of the remote control operation.

Battery & Charger Care (Brief)

Important: Battery should be charged overnight prior to using your trolley.

For full guidelines including tips for warranty & prolonging battery life, please refer to the battery instruction booklet enclosed with your trolley. It is important that you read the full charging information to ensure safe use of your battery and charger.

- All batteries must be charged as soon as possible after each use. Leaving batteries discharged for long periods of time may affect the battery life.
- The Lithium battery charger **MUST NOT** be used to charge any other battery and is designed for use with QOD Lithium batteries only.
- The battery must be stored and charged in a dry environment between 0° Celsius to 35° Celsius.
- When connecting your battery to the trolley, please ensure that the connections match up black to black and red to red depending on your battery type.

Lead Acid

Never charge the battery outside or in conditions that may allow moisture to penetrate the charger or connections. If the battery is not used for prolonged periods of time, please charge your battery at regular intervals (every 6 weeks). Please do not leave it on charge or connected to the charger.

The battery should be charged for at least 12 hours before using it for the first time, please be aware that the charger can take up to a further 8 hours to show fully charged once the battery has reached 90% charge.

Lithium Battery

1. Charge your battery by plugging the charger plug into the socket located on the side of the battery.
2. When the charging led indicator has turned green, the battery is fully charged and ready to be used.
3. The charging process will take between 3 to 5 hours depending on the depth of discharge (please be aware that this may take longer for the first few charges).
4. Once charging is complete please disconnect the charger from the mains power supply.
5. Finally disconnect the charger from the battery.

Caring for your Lithium Battery

- Do not connect unmatched batteries or charger otherwise the warranty on each will be void.
- Try to avoid getting the battery too wet (Don't submerge the battery in water)
- Dropping the battery may cause damage to the internal cells.
- Use a damp cloth to clean off any dirt.
- Do not use the trolley to pull you up the hills

Note: The battery is a sealed battery. If you are intending to take your trolley and battery on air travel, we advise you contact your airline prior to travel.

Specification

Drive Train/Transmission	<i>Type: Power Polymer Gear, Steel Worm Drive, with 25:1 Gear Ratio Rate</i>
Weight	<i>Net Weight Trolley: Approx. 11 kg</i>
Speed	<i>Approximately 8.0 km</i>
Distance/Range	<i>20 km/ 18 Holes</i>
Maximum Load	<i>35 kg</i>
Climbing Ability	<i>20 degrees</i>
USB Power Output	<i>+5v</i>
Construction	<i>Stainless Steel, Aluminum, Zinc Plated Steel and Nylon 6.6</i>
Dimensions (cm)	<i>Folded: 42(L) x 30(W) x 27(H) Full: 66(L) x 59(W) x Adjustable to 140(H)</i>



Folded
42(L) x 30(W) x 32 (H) cm



Expanded
66(L) x 59(W) Adjustable to 140(H) cm

QOD Golf International. www.qodgolf.com

Warning: Product Patent Protected, Design Protected, Copyright Protected. All rights Reserved

Expanding Your QOD Trolley



Step 1

Undo the top knuckle lever on the trolley to extend top arm and lock off after positioning.



Step 2

Undo the bottom knuckle lever to adjust the position of the lower arm to be parallel and lock off.



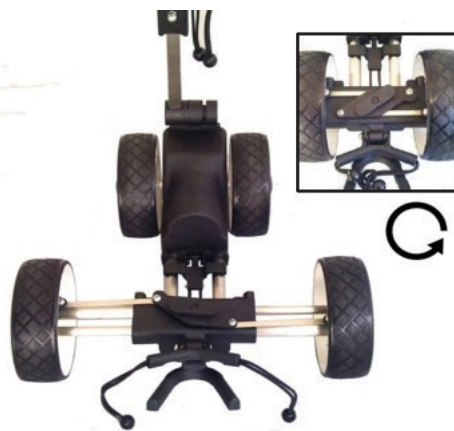
Step 3

Loosen back lever and pull the arm upwards extending its full height and lock off lever. (It is designed to only sit on one position when extended with the locking system)



Step 4

Standing in front of your QOD trolley, pull the front piece of the trolley towards you for extending the length of your trolley and let down bottom bag support.



Step 5

Lift wheels off the ground and turn the lever on the front end piece anti clock wise to loosen the wheels lock position then pull both front wheels outwards at the same time to extend.

You have now finished extending your QOD Golf Trolley. To pack down your QOD Trolley, please reverse the steps/procedures above

Battery Fitting



Step 1

Locate the battery cradle on the trolley



Step 2

Place the battery in the battery cradle with lead facing to the rear of trolley



Step 3

Locate the battery connection plug on the trolley located on the side of the trolley



Step 4

Plug the connection on the battery into the trolley. Make sure the connections align black to black and red to red and the wheel is not rubbing on the battery lead

Important: Please refer back to battery manual for battery usage and care.

Golf Bag Fitting

Place and position your golf bag in the centre on the bag holders and stretch the bungee cord around your golf bag to lock the bag in position onto your trolley. Push one of the end knobs into the cord of the other like shown in the photos to lock the bag off as followed:



Step 1

Upper bag holder



Step 2

Lower bag holder

Control functions and Usage of Your QOD Trolley

Usage of the Trolley with the Controls



Light Indications - ● Full Power → ● 50% Capacity → ● Power Low

Complete Handle and Controls

Red light indicator (Power) - A flashing red light on the handle indicates that the battery is too low to drive the trolley. LCD display shows variable speed between values 1 to 5.



USB Connection

On the right hand side behind the T-handle locates a USB connection for the convenience of maintaining power on the course for your GPS or your sub devices. Power will output in the duration of the battery being connected to the trolley if any device is connected. Charging will be slower because the power output is similar to a computer output.



ON/OFF Button

Needs to be held down for a few seconds (or until light turns on) before trolley will be turned on or off.



Speed Button



Potentiometer

Variable Speed Control (*Mutually Independent*)

Variable speed adjustments, up to 5 speeds. Only one speed control can be used at a time as the potentiometer and variable speed button are mutually independent to each other. When the trolley starts the speed will gradually increase due to the soft start



Time Forward Advance

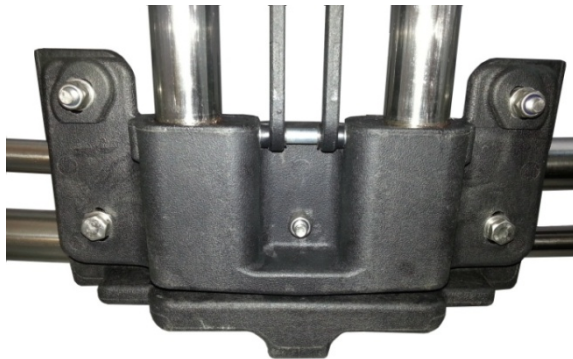
Time forward advance allows the trolley to run for a set amount of time with a countdown feature for your reference. It operates at a preset speed which not adjustable.

- 10 seconds - Runs for 10 seconds and stop
- 20 seconds - Runs for 20 seconds and stop
- 30 seconds - Runs for 30 seconds and stop

STOP/START Button

Soft switch to stop the trolley and then resume the trolley. This button maintains the variable speed control previously set before stopping

Tracking



1. Flip the trolley around and locate on the front chassis the tracking system
2. Loosen the four nuts and bolts placed on the two sides.
3. Place the trolley back into position and adjust by running the buggy to verify which side it is tracking to
4. To adjust the tracking tap the front wheel slightly/gently with your foot
5. If the trolley is tracking to the left tap the left wheel and if the trolley is tracking to the right, tap it on the right wheel

After the adjustment of tracking has been made, lock off the four nuts / bolt.

One-Way Bearings

When going downhill you will need to pull back on the handle to slow down the trolley. If you need to stop on a downhill slope turn the trolley 90 degrees to a sideway position. Steep Inclines: Use your good judgment. Remember you need to have a good control of your trolley.

Never use the trolley to pull you up a hill. Look at the terrain and you will soon become accustomed to the easiest and most appropriate path for both you and the trolley. Remember your trolley is designed to go where you would normally walk. Attempting to climb steep inclines always requires a more urgent draw on the battery. The battery is designed to play 18 holes of golf. The battery should then be recharged before further use.

Cruise Control

One unique feature of your QOD trolley is cruise control. For gradual slopes on the fairways and trolley paths, the trolley will automatically maintain the speed setting you have selected. Steep slopes require more power, so you may have to increase the speed on the control knob for steeper slopes.

Guiding the Trolley in the Most Effective Way

The QOD trolley is designed, with balance in mind, to avoid tipping backwards when hitting large bumps or indentations on the course. The trolley achieves best balance results by placing the battery over the front wheels to act as a counter balance. This does not affect the ease of steering; however it does give the trolley more tracking capabilities as the front wheels have less chance of bouncing. Very rough terrain or rock trolley paths will affect the tracking.

Never leave the trolley unattended on downhill slopes. If you do, the trolley may run away from you. Place the trolley sideways to avoid rolling if left unattended.

Steering

Easy turning on the drive wheel by lifting the front wheels:



For small directional changes of less than 45 degrees, simply apply sideways pressure to the handle. Do not twist the handle or put the trolley in a position where it is running on two outside wheels. For abrupt turns, the one way bearing makes turning on the drive wheels easy to do on all surfaces.

For abrupt turns of 45 degrees or more, simply push down on the handle and turn the trolley. The differential action of the one way bearings allows one wheel to remain stationary and the other wheel to rotate. Just like the drive wheels of a vehicle.

General Warnings

Folding and unfolding the trolley

- Never lift or pull on the electrical cable between the upper and lower arm. This should NOT be mistaken for a handle. Pulling on this cable can detach the wires from the handle or controller and render the trolley unusable.
- Always lock off the knuckle lever in both the expanded and folded position. Make sure the teeth in the round knuckle mesh before locking off. Not locking off the knuckle lever when the trolley is in transit can cause damage to the trolley on heavy bumps.
- Watch that your hands do not become pinched in the folding frame.

Downhill Terrain

- Do not drive the Trolley great distances away from you.
- Never leave the trolley unattended on downhill slopes as the trolley can roll forward whether the motor is on or off.

Flat Terrain

- On flat fairways you will most likely walk alone beside or behind the trolley. Remember, always keep control of the trolley and never operate the trolley faster than you wish to walk.

Lifting

- When lifting the trolley or battery at any time, lift with your legs and not with your back to help prevent injury.

Frame

- Never stand on the frame. The weight of a person or even a large child could cause damage to the frame, particularly the axles. This trolley is designed to carry a golf bag and golf clubs only.

Wheels

- If you remove the rear wheels ensure that the correct wheels are reinstalled on each side. The rear wheels are installed with one way bearings that free- flow moving forward when the motor is off. When the motor is turned on the axle shaft turns the one way bearings grip and turn the wheels. Be careful that the key way is installed on the shaft if the wheels are removed prior to installing the rear wheels. If the keyway is left out or if the wheels are installed left to right the wheels will not turn when the axle shaft turns.

Caring for Your Trolley

To get the best performance out of your QOD Trolley, it is recommended that you take the opportunity to perform regular maintenance. If you perform some simple tasks each time you use your trolley, the appearance and operation of you trolley will be maintained for much longer.

1. After playing a round of golf it is advisable to wipe off any mud or grass from the frame, wheels and chassis with a cloth or paper towel before putting your trolley away. This will leave your trolley ready for use the next time you need it.
2. Even though the components of your trolley are designed to resist casual water during use, do NOT use any high-pressure or jet washers to clean your trolley as this may allow the penetration of water into the electronics, motor, gear box or wheel bearings and affect the operation of your trolley.
3. Remove the rear wheels every few weeks and remove any debris that might cause the wheels to drag. Don't use any solvent based chemical to lubricate any part of the trolley (i.e. WD40)
4. A four or five hour round of golf played once a week for 12 months is equivalent to four years use for a lawnmower, so regular inspection of your trolley will assist in keeping your trolley in good working condition. If you notice any worn or broken parts, please contact QOD Golf International or your local distributor in the country of purchase for replacement parts or service. Alternatively service issues can be sent to QOD Golf International via the website or email.
5. Always disconnect the battery when you store the trolley and always put your trolley together before re-connecting the battery. If you are not planning to play for at least a month, store the battery in a warm and dry place (not on concrete floor).

All of these recommendations will help keep your QOD trolley in top condition and ensure that it remains your reliable partner, on and off the links.

Warranty (Brief)

Purchase location and date of purchase must be supplied to QOD golf international before warranty is accepted for processing. In the event of a need for warranty service, either contacts QOD Golf International on our website or email service@qodgolf.com

Warranty Exclusions – the following events will void warranty:

- a. Any alteration performed by non authorised people or companies.
- b. Accidents in which cause damage to the QOD Trolley
- c. Fitting of parts or accessories not recommended by QOD Golf International.
- d. Any damage caused by continued operation of the motorised trolley after it is known to be defective.

All implied warranties [save those preserved by statute] are excluded. Liability for consequential damages under any and all warranties are excluded to the extent exclusion is permitted by law.

Important: For complete warranty guideline and information; please refer to the warranty card enclosed with your trolley.

QOD Golf International. www.qodgolf.com

Warning: Product Patent Protected, Design Protected, Copyright Protected. All rights Reserved

Transporting your trolley

It is critically important to keep your trolley in its closed position when it is stored for traveling. Customers have a general duty of care to take care of their trolley hence forth damaging it due neglecting their trolley.



Knuckle cannot be left open at any time especially during transport – It is opened and positioned then it has to be locked.



Knuckle must always be kept closed and meshing so it won't cause irreversible damages

Note: Please avoid leaving any loose joint as it will cause damage to the trolley. If the knuckles hasn't been closed in the scenario of the damage happening, it will not be covered by warranty due acts of neglecting to look after the QOD trolley.

Maintenance of the Trolley

As your golf trolley is an electric vehicle it is necessary to continuously maintain it throughout its life. QOD highly recommends you to service your Trolley at regular intervals to maximize performance, durability and reliability. In the annual service the battery is checked, the nuts and bolts tightened, the motor is checked, the gearbox is checked, and all electrical connections are checked.

Prior to undertaking any repairs the QOD repair centre/country distributor will contact you to explain what needs to be done if any. To book your trolleys in for its annual service please refer to www.qodgolf.com or either contact QOD Golf International by email to find your nearest QOD repair centre/country distributor.

In order to get maximum value and use out of your trolley it is important to maintain your trolley by keeping it clean and tidy. We recommend that you wipe down your trolley after every round of golf. Emphasis should be placed on the sliding parts. Do not under any circumstance power wash your trolley.

We at QOD wish you a great golfing experience. We are always here to help you. We want you to enjoy the trolley, your exercise and your game. Do not hesitate to contact the QOD repair centre/country distributor by phone or email. If you would prefer the manufacturer contact you please send an email to info@qodgolf.com and we will return your call to anywhere in the world.

Note: For any questions or necessary repairs e-mail or call the QOD repair centre/country distributor for the most appropriate way to handle any issues you might have. This will allow us to maintain detail statistics and provide you with a higher level of service. We will meet all your needs on a very personal level and endeavor to exceed your expectations.

The trolley has a small number of parts that can be easily replaced. In order to get your QOD back on the course as soon as possible, it may be more time effective for the repair centre to send the part and have replacement with our detailed instructions. First, we want to know the nature of the problem. Defective parts are replaced at no charge to you under warranty. Parts damaged by misuse or improper operation of the trolley will result in charges for the replacement parts and any labor involved.

Trolley returns will be handled in the following manner. If the trolley requires service and must be returned to us, the owner of the trolley should pay the freight to and from the service centre. We can provide a pickup and delivery service at a nominal charge. So please retain the box and packaging for transport for these circumstances.

Frequently Asked Questions (FAQs)

Is it important to register my purchase for warranty purposes? You must register your purchase as soon as possible with QOD Golf International or your warranty will not be validated and recognised for any service or warranty. You can register on line www.qodgolf.com . The serial number for your trolley is located on the bottom behind the chassis.

How often should my battery be charged? Your battery must always be charged before and after each game. Leaving the battery in a discharged state will shorten its life.

Should I discharge my battery fully to remove memory? NO – lithium batteries do not have memory issues. Fully discharging the battery will damage it and the charger will not be able to recharge the battery which will ultimately void your battery warranty.

If I only play 9 holes, do I still have to recharge the battery before the next game? The battery must always be charged after every use regardless of the number of holes played.

Should I buy a second battery? If you need to play 36 holes in a day you should either buy an extended range battery or a spare standard battery. If you opt for using two batteries make sure you rotate their use to prolong the life of both batteries.

Should I fully discharge my battery from time to time? You must never fully discharge the battery as this could severely reduce the capacity of the battery. If you notice the trolley starting to travel more slowly than usual you should stop using it as soon as possible.

What happens if my battery stops before I've finished my round? If your battery stops before the completion of the round, QOD trolleys have a freewheel feature to allow you to complete your game. We advise to check the battery terminals to ensure that they are properly connected. If this does not resolve the issue, please call the QOD repair centre/ country distributor.

Warning

QOD Golf International Limited, Eagle Compac EU SARL and Oceania Lifestyle Distribution and its associated companies strictly enforces protection in their products and legal enforcement will be made on infringement on their protected areas mandatorily. The products have been designed protected, copyright protected and patent protected internationally including the following countries: European Countries, USA, Canada, China, Australia and Australasia.

As of the high product exposure this is an acknowledgement that the product purchased will be safe and free from any infringement type on all GOD Golf International products.

QOD Golf International product designs are exclusive property of their respective authors and must not be reproduced or used without their express consent and any partial or total reproduction of the content is strictly prohibited.

Copyright Protection – QOD Golf International, Eagle Compac SARL and Oceania Lifestyle Distribution and its associated companies individually or collectable are the exclusive owner of all right, title and interest, including all intellectual property rights, in the Works;

Design Protection - The holder of a registered design right has the exclusive right to authorize or prohibit others from using the design in any way, notably by producing, importing, selling or using products based on the design.

Patent Protection - Covers the ornamental design for an object having practical utility. An object with a design that is substantially similar to the design claimed in a design patent cannot be made, used, copied or imported. The copy does not have to be exact for the patent to be infringed. It only has to be substantially similar.

By breaching any of the copyright, patent and design protection QOD Golf International will withhold the rights to enforce legal action at that time.