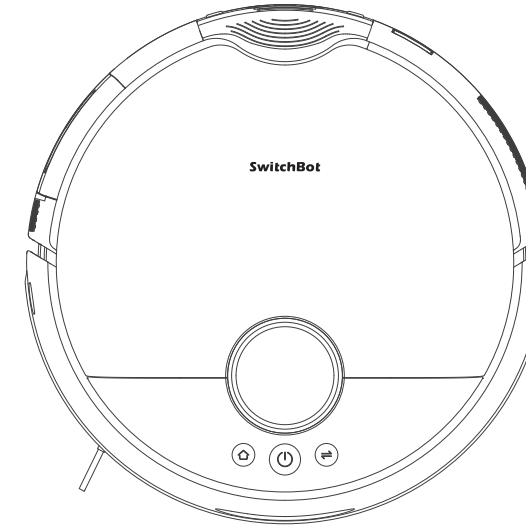


文件名称: Cleaner S20上下水版-SMS-EN-2502	设计师:LBY	完成时间:2025/02/18
版本号: V1.0-2502	成品尺寸:140mm×200mm	
材质和工艺: 封面 157g铜版纸+内页80g书写纸+1专+4C+封面过哑胶+骑马钉 <div>PT 2034C</div>		
更改内容:		
备注:蓝色线框不印刷, 此页表格不印刷		

# **SwitchBot**

## **Floor Cleaning Robot S20 with Auto-Fill & Drain System**

### **User Manual**



Please read this user manual carefully before using your device.

# Thank you for choosing SwitchBot!

This manual will guide you through a comprehensive understanding and quick installation of this product, and provide important information on product usage and maintenance to help you achieve the best product experience.

If you have any questions during use, please call the service hotline or contact the official email. SwitchBot technical support experts will answer your questions.

Setup and Troubleshooting: [support.switch-bot.com](https://support.switch-bot.com)  
Customer Support: [support@switch-bot.com](mailto:support@switch-bot.com)

Scannen Sie den QR-Code, um die deutsche Version unseres Benutzerhandbuchs zu erhalten.  
Scannez le code QR pour obtenir notre manuel d'utilisation en version française.  
Escanee el código QR para obtener la versión en español de nuestro manual de usuario.  
Scan de QR code voor de Nederlandse versie van onze gebruikershandleiding.  
Scansionate il codice QR per ottenere la versione italiana del nostro manuale d'uso.  
<https://www.switch-bot.com/pages/switchbot-user-manual>



User Manual



Scan the QR code to get started  
using your product.

# Contents

## Product Overview

List of Components	01
LED Indicator Light Status	06

## Preparing for Use

Setting Up the Base Station and Robot	06
Decluttering	09

## Instructions for Use

Mapping	10
Starting Your Robot	10
Switching Mode	11
Pausing Your Robot	11
Recharging	11
Exchanging Water	11
Hibernation	11
Do Not Disturb Mode	11
Child Lock	12
Restoring to Factory Settings	12
Upgrading Firmware	12

## Care and Maintenance

Daily Maintenance (Robot)	12
Daily Maintenance (Base Station)	21

## Troubleshooting

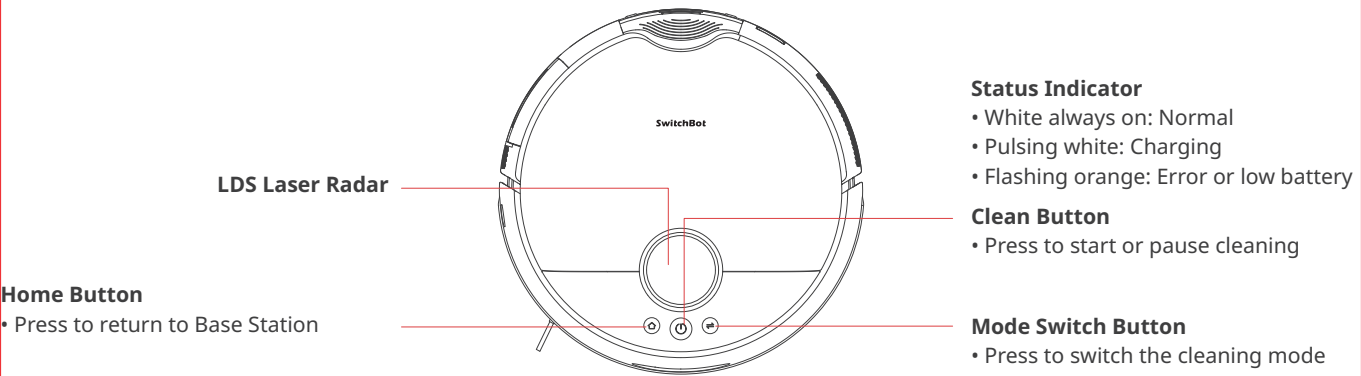
Common Issues	24
Specifications	25

## Warranty & Support

Warranty	27
Disclaimers	28
Contact & Support	28

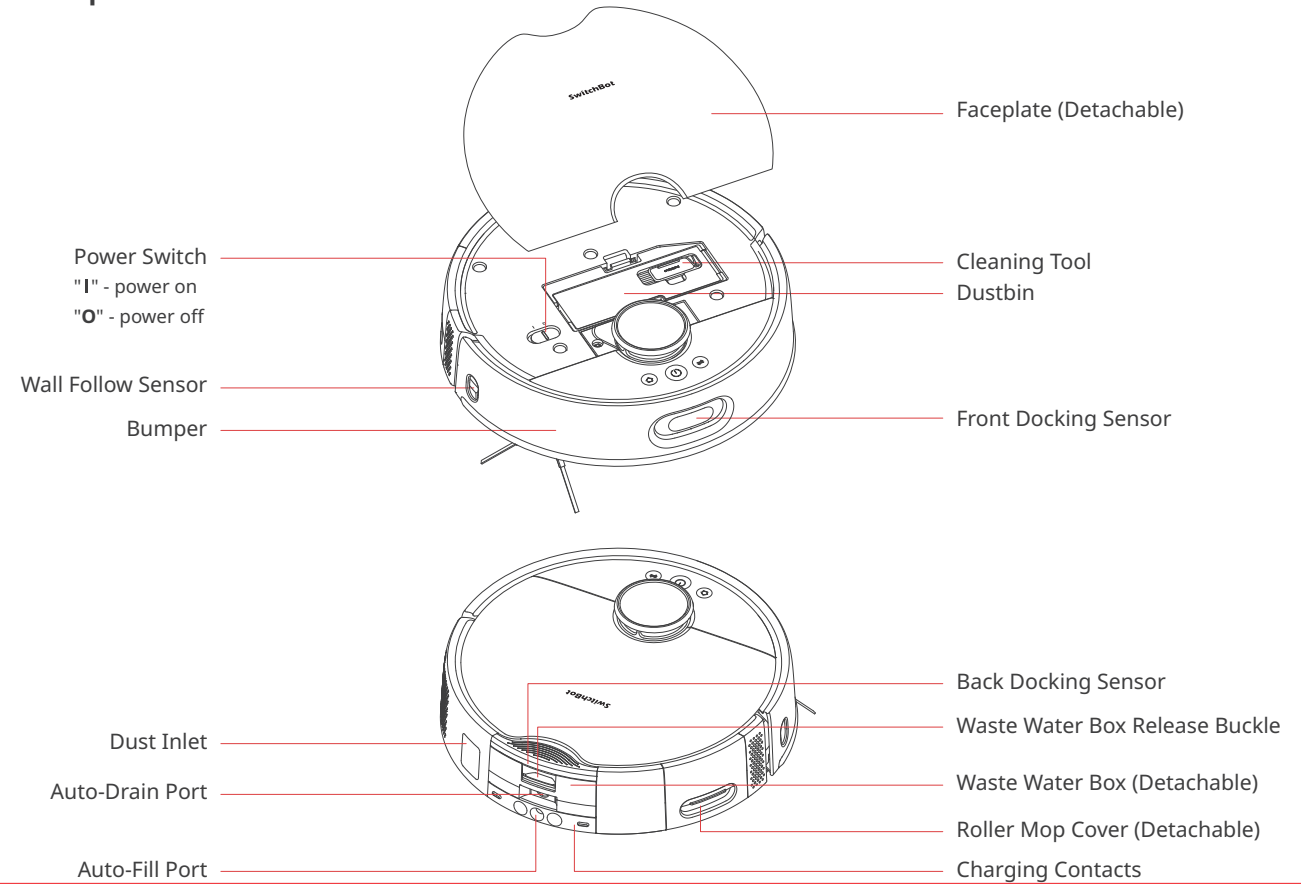
# Product Overview

## List of Components

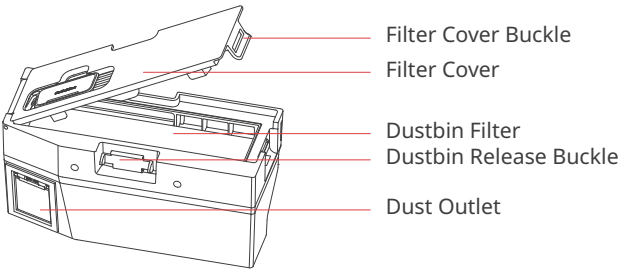
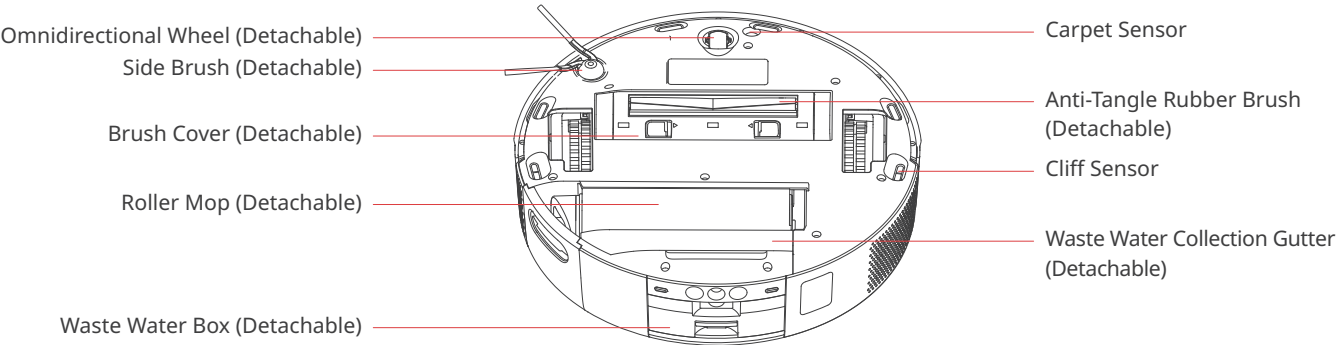


**Note:** Press any button to stop the robot during cleaning or docking.

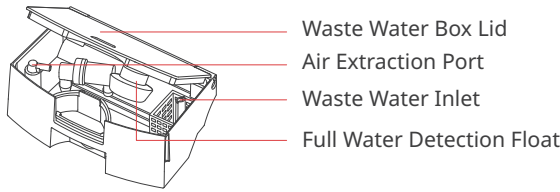
## Robot Top View



Robot Bottom View



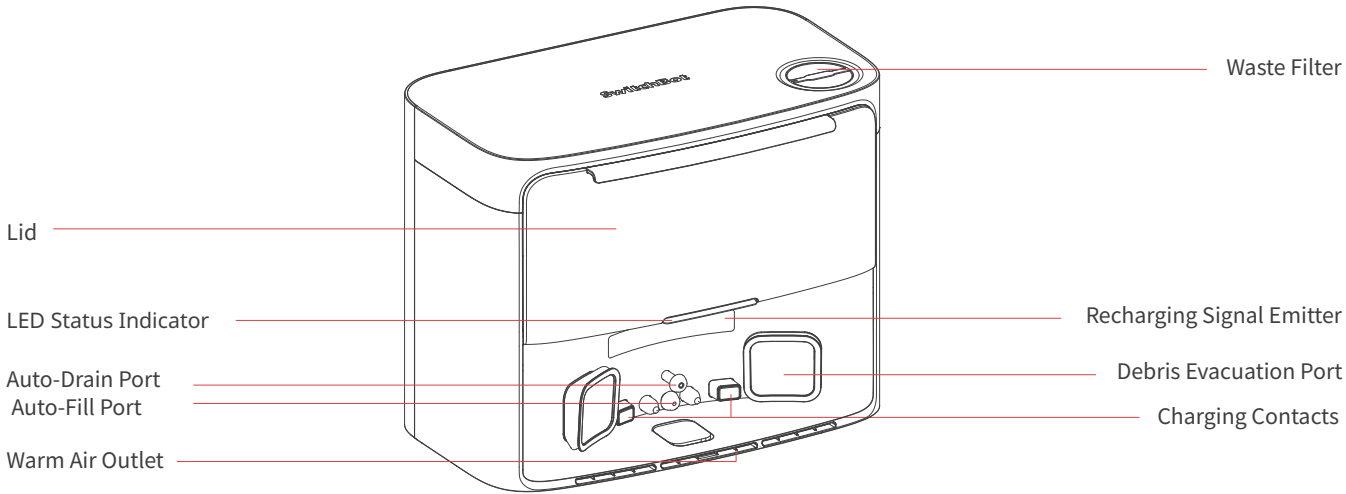
Dustbin Components



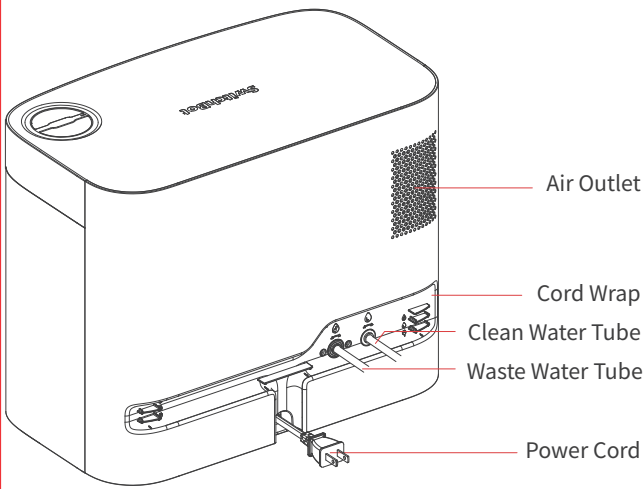
Waste Water Box Components

Base Sation

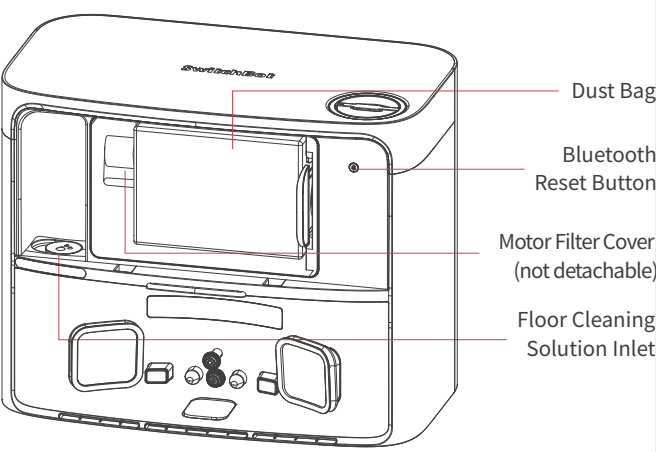
Front View



Rear View



Dust Bag Compartment



LED Indicator Light

Device	Indicator Light Status	Description
Robot	On in white	Operating
	Pulsates in white	Charging
	Flashes fast in white	Upgrading firmware or configuring network
	Flashes fast in orange	Error
	Flashes slowly in orange	Realigning
Base Station	On in white	Powered on
	Flashes in white	Bluetooth pairing, docking, or Base Station about to operate.
	On in orange	Error

Preparing for Use

Setting Up the Base Station and Robot

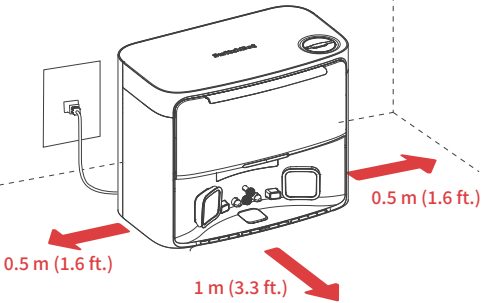
1. Unpack and check package contents.

Ensure you have everything listed on our Quick Guide.

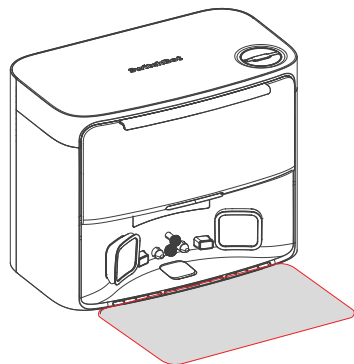


2. Place your Base Station at a proper position.

- 1 Choose a suitable location for your station with a strong Wi-Fi signal.
- 2 Plug the station's power cord into an outlet.



- ③ Locate the included Moisture-proof Pad, remove the tape liner, and attach it to the ground in front of the station.

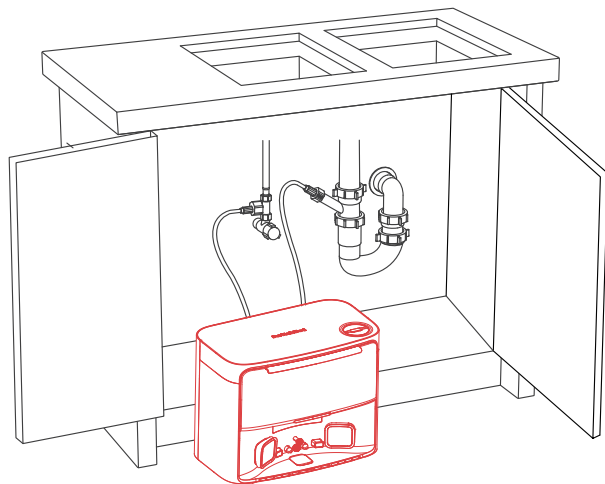


**Please note**

- Organize the power cord. If left on the ground, it may be dragged by the robot, causing the station to move or disconnect from power.
- Place the station on a level indoor surface, away from open flames, heat sources, water, narrow spaces, or areas where the robot may fall.
- Placing the station on non-hard surfaces (such as carpets, mats, etc.) poses a risk of tipping over, and the robot may not be able to leave its station properly.
- Do not place the station under direct sunlight or block its signal emitter area with any objects, as this may prevent the robot from returning automatically.
- Please follow the maintenance instructions for the station and avoid using wet cloths or rinsing it with water.

**3. Connect the Base Station to your home's plumbing system.**

- ① Scan the QR code to watch the installation video. Follow the step-by-step instructions to select the appropriate installation method and accessories, then connect the station to your home's plumbing system.



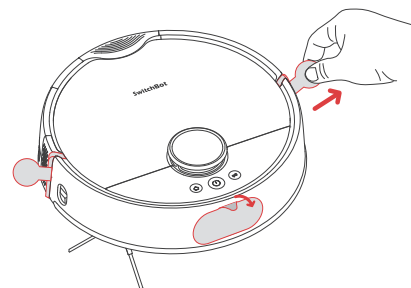
- ② Once connected, open the water valve to check the tube connections. When using the water exchange function for the first time, carefully inspect for any leaks to ensure proper installation.



How to install S20 Base Station with Auto-Fill & Drain System

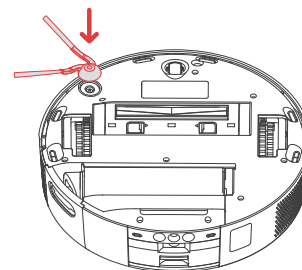
**4. Set up your robot.**

- ① Remove the foam strips on both sides of your robot. Install the Side Brush, then power on.

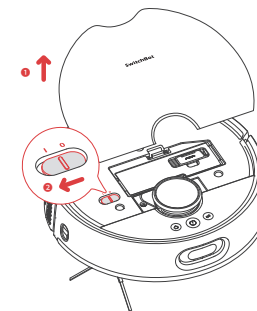


**Tips**

When you hear a clicking sound, it means the Side Brush has been properly installed.

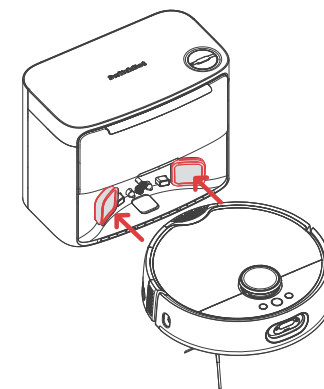


- ② Remove the faceplate and turn on the Power Switch. "I" means powering on, and "O" means powering off.



- ③ Dock your robot to the station. You will hear a sound prompt when docked successfully.

Tips: Dock your robot for 30 minutes of charging before initial use.



### 5. Add your robot to the SwitchBot app.

- 1 Scan the QR code to download our app. Register an account or directly log in if you already have one.
- 2 Tap the "+" icon located at the right-hand corner of the home page, select Add Device.
- 3 Follow the instructions to add your robot.

You will need:

- A smartphone or tablet using Bluetooth 4.2 or later.
- The latest version of our app, downloadable via the Apple App Store or Google Play Store.
- A SwitchBot account, you can register via our app or sign in to your account directly if you already have one.



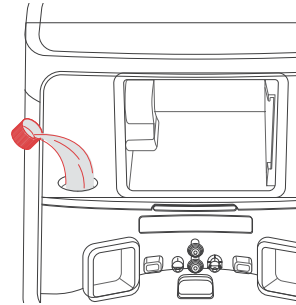
iOS and Android system requirements:

<https://support.switch-bot.com/hc/en-us/articles/12567397397271>



### 6. Add Floor Cleaning Solution.

- 1 Open the dust compartment and locate the rubber seal on the left side.
- 2 Pour 150 ml (5 fl oz) of SwitchBot Floor Cleaning Solution into the station.



- Please use the official SwitchBot cleaning solution, with each bottle containing 150 ml (5 fl oz.) and a cap volume of 6 ml (0.2 fl oz).
- Do not use non-official cleaning agents, as they may cause corrosion and device damage.
- When using with a SwitchBot Humidifier, do not add cleaning solution, as it may damage the device.

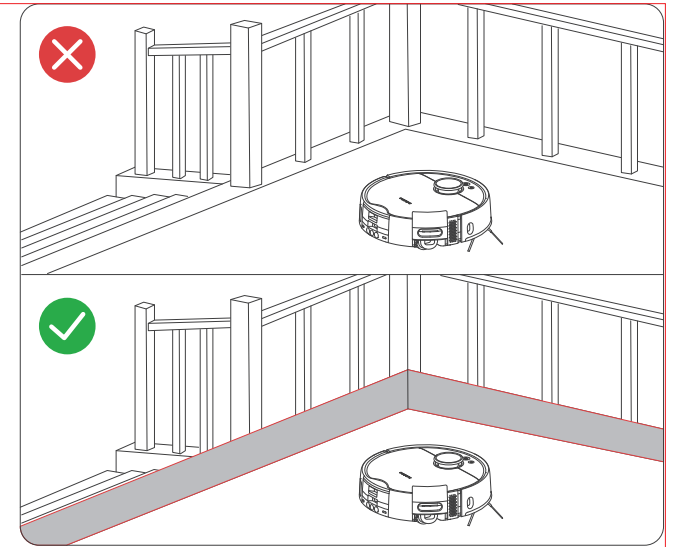
### Decluttering

Before starting the robot, please check the floor and clean up any scattered items such as wires, socks, slippers, children's toys, etc. to improve the efficiency of the robot.

Clear the floor of hard or sharp objects (e.g., nails, glass), and move away items that are fragile, valuable, or potentially dangerous to avoid being caught, tangled, or knocked over by the robot, causing personal or property damage.



Before cleaning, please use a physical barrier to avoid areas that are hanging in the air or low, ensuring the safety and smooth operation of your robot.



Open the doors of the rooms to be cleaned, arrange the furniture neatly, and try to clear the largest cleaning space.


Please avoid standing in front of your robot, doorways, or narrow passages in case your robot cannot detect the area to be cleaned.




# Instructions for Use

## Mapping

Before starting mapping, ensure your robot is docked and charged. Follow the in-app instructions to begin fast mapping. Once mapping is complete, the robot will automatically return to the station and save the map.

**Tip:** When using for the first-time, short press the  button, and your robot will start mapping while cleaning.

## Starting Your Robot


Control your robot via our app or press the  button on the robot to start. Your robot will plan cleaning routes based on saved maps. For first-time use, your robot will automatically work on the Vacuum mode.



### Please note

- To facilitate the normal water exchange of the robot, please do not move the Base Station during the cleaning and mopping process. If there is a door hiding the station, please keep the door open.
- If the battery is low, please charge it before starting the cleaning task.
- If the battery is insufficient during the cleaning process, the robot will automatically dock to charge.
- When the robot is set to clean carpets, it will automatically raise the Roller Mop. You can choose to bypass carpets in our app.

## Switching Mode


You can adjust the cleaning suction power and mopping water volume in the app based on the floor's dirt level. Or short press the  button on your robot to switch between default cleaning modes.




### Please note

In Vacuum mode, the Roller Mop will automatically raise and stop rolling.

## Pausing Your Robot

Stop your robot via the app or by press any button on the robot. When paused, resume the previous cleaning task via the app or by pressing the  button.

## Recharging

- 1 After finishing a cleaning task, your robot will automatically dock to the Base Station to charge.
- 2 When in standby mode, your robot will dock and charge after pressing the  button.
- 3 By default, your robot will automatically resume interrupted cleaning tasks (e.g., due to low battery or new commands). If the battery level drops during a task, the robot will dock to recharge and resume the task once the battery reaches above 80%.

### Please note

If the robot does not find the Base Station, it will automatically return to the starting position. Please manually dock it for charging.

## Exchanging Water

- 1 During a mopping task, your robot will automatically dock to drain waste water and clean water.
- 2 After completing a mopping or cleaning task, your robot will dock to empty dust, exchange water, deep clean and dry its Roller Mop, then start a recharging session.

## Hibernation

If your robot is not operated for more than 10 minutes, it will automatically enter hibernation. Press any button to wake it up.

### Please note

The robot will not enter hibernation while charging.

## Do Not Disturb Mode

The default setting for this mode is from 22:00 to 08:00, and you can modify or disable this via our app. During the Do Not Disturb period, device button lights will stay off, and your robot will not automatically resume cleaning or play voice prompts.

## Child Lock

You can use the Child Lock function in our app to lock the robot buttons. You can unlock it via our app.

## Restoring to Factory Settings

Press and hold the  +  +  Switch buttons simultaneously for 6 seconds to restore the robot to factory settings.

## Upgrading Firmware

In order to improve user experience, we will regularly release firmware updates to introduce new functions and solve any software defects that may occur during usage. When a new firmware version is available, we will send an upgrade notification to your account via our app. When upgrading, please make sure your product has sufficient battery or stay powered on and make sure your smartphone is within range to prevent interference.

You're advised to enable Automatic Upgrades via the Firmware & Battery page of our app.

Care and Maintenance


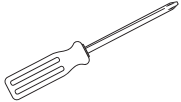
Daily Maintenance (Robot)

To keep your robot and station running at peak performance, perform the procedures on the following pages.

Part	Care Frequency	Replacement Frequency
Front Caster Wheel	Clean as needed	/
Dustbin		
Anti-Tangle Rubber Brush	Once every 2 weeks	6 to 12 months
Waste Water Collection Gutter		1 to 3 months
Roller Mop		3 to 6 months
Dustbin Filter		
Side Brush	Monthly	6 to 12 months
Brush Frame		
Waste Filter (Base Station)		
Waste Water Box		
LDS Laser Radar	Monthly	/
Wall Follow Sensor		
Front Docking Sensor		
Back Docking Sensor		
Infrared Obstacle Avoidance Sensor		
Carpet Sensor		
Cliff Sensor		
Charging Contacts		
Debris Evacuation Port		
Water Inlet		
Dust Inlet (Base Station)		
Recharging Signal Emitter (Base Station)		

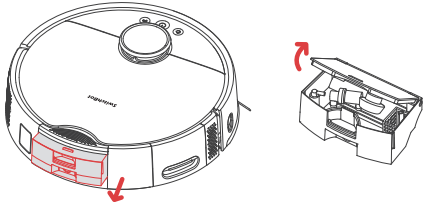
Charging Contacts (Base Station)		3 to 6 months
Auto-Fill Port & Auto-Drain Port		
Moisture-proof Pad		
Diatom Mud Mat		
Floor Cleaning Solution	/	Add once every 1 to 3 months
Dust Bag	/	Replace every 1 to 3 months

Cleaning tools needed

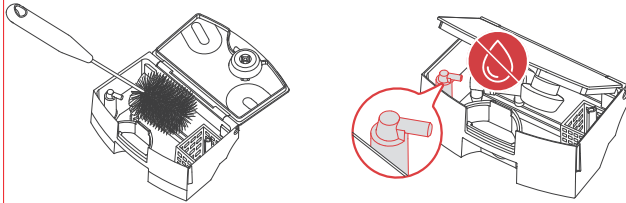
	
Provided	Not provided

Waste Water Box

1 Remove the Waste Water Box from the robot and open the lid.



2 Clean the sediment inside the Waste Water Box.



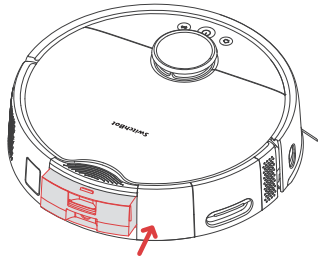
Please note

Avoid getting water into the Air Extraction Port during the cleaning process.

3 Install the Waste Water Box back to the robot.

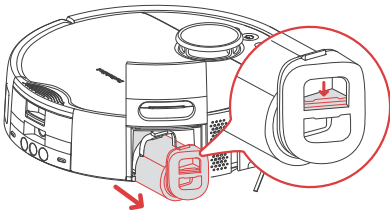
Please note

Before flipping the robot over to clean, empty the Waste Water Box first to prevent waste water spillage.



Waste Water Collection Gutter

1 Remove the Roller Mop from the robot.



2 Flip the robot over, and lift the Waste Water Collection Gutter from its left end to remove.

