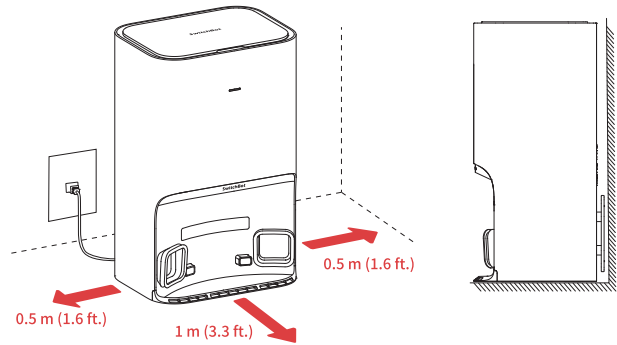


Note:

1. When using the robot for the first time, follow it throughout its whole cleaning route and watch for potential problems. The robot will be able to clean itself in the future.
2. If the robot gets stuck under low furniture, you can try the following solutions:
 - ① Block the bottom of the furniture;
 - ② Set a virtual wall in the app to prevent the robot from entering;
 - ③ If possible, raise the furniture slightly.

Placing the Auto-empty Station

- ① Place the Auto-empty Station on a hard, level surface (such as a floor or ceramic tile) against a wall, ensuring there is at least 1 meter of space in front and above, and 0.5 meters on both sides. Make sure the location has a good Wi-Fi signal to provide a better network connection and app user experience.
- ② Plug the Auto-empty Station into an outlet, ensure the indicator light turns on, and store any excess cable in the Cord Wrap.

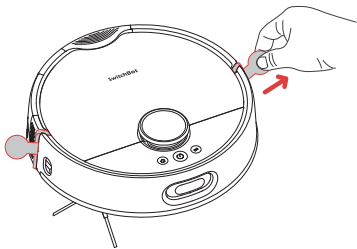


Note:

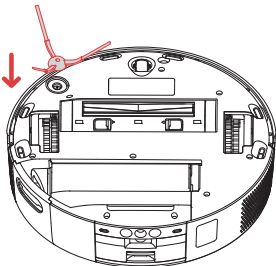
- The power cord may be dragged by the robot if hanging on the ground, causing the Auto-empty Station to move or disconnect from power.
- The indicator light on the Auto-empty Station will stay on when powered, and go off when the robot is charging.
- If there is an issue with the Auto-empty Station, the indicator light will turn red and stay on as a reminder.
- Make sure to place the Auto-empty Station on a level indoor surface, away from open flames, heat sources, water, narrow spaces, or areas that may cause the robot to hang in the air.
- Placing the Auto-empty Station on non-hard surfaces (such as carpets, mats, etc.) poses a risk of tipping over, and the robot may not be able to leave the Auto-empty station properly.
- Do not place the Auto-empty Station under direct sunlight or block its signal emitter area with any objects, as this may prevent the robot from returning automatically.
- Please maintain the Auto-empty Station according to the maintenance instructions and avoid using wet cloths or wipes for cleaning.

Preparing Your Robot

Removing the protective foam strips



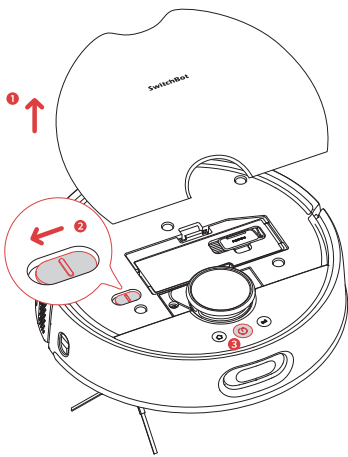
Installing the Side Brush



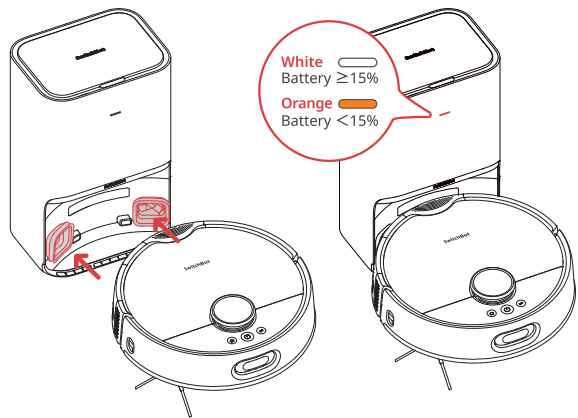
Tip:
When you hear a clicking sound, it means the Side Brush has been properly installed.

Powering on and charging

- 1 Remove the faceplate as shown in the picture, and turn on the Power Switch. "I" means powering on, and "O" means powering off.



2 Wait for the indicator light on your robot to light on, then manually dock your robot to the Auto-empty Station to charge, as shown in the picture. You will hear the voice prompt "Charging".



Note:

- To maintain battery performance, please keep the robot charged during daily use.
- Before using the robot for the first time, it is recommended to charge it for a while. If it cannot be turned on, it might be due to insufficient battery. Please dock the robot directly to the Auto-empty Station.

Installing the Water Station

Please follow the User Manual of SwitchBot Floor Cleaning Robot S10 Water Station to install your Water Station.



Instructions for Use

Connecting to Our App

1 Download the SwitchBot app to experience more personalized settings and a better user experience.

You will need:

- A smartphone or tablet using Bluetooth 4.2 or later.
- The latest version of our app, downloadable via the Apple App Store or Google Play Store.
- A SwitchBot account, you can register via our app or sign in to your account directly if you already have one.



iOS 12.0+



Android OS 5.0+

2 Open our app, tap "+" located at the right-handed corner of the home page, select Add Device.

3 Find the device icon and select, follow the instructions to add your device.

Mapping and Marking Water Station Position


1 For first-time use, make sure your robot starts from the Auto-empty Station. Short press the Ⓢ button, and your robot will start mapping. It will automatically return to the Auto-empty Station and save the map once the mapping is complete.

2 After the map is created, you need to manually mark the position of the Water Station.

- Marking via our app: tap "Mark Position" in the app and follow the prompted instructions.
- Manual marking: Manually dock your robot to the Water Station. Press the Ⓢ button to begin. Your robot will leave the Water Station and relocate itself. Once the voice prompt confirms successful relocation, press the Ⓢ button. Your robot will then automatically return to the Auto-empty Station.

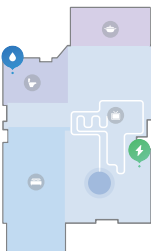
3 After marking the Water Station position, control your robot via our app or press the Ⓢ button on the robot to start. Your robot will start cleaning from the Auto-empty Station.

Vacuuming and Mopping

1 Press the  button on your robot, and your robot will plan the cleaning route dynamically based on the scanned map.



2 Before mopping, your robot will go to the Water Station (marked) to add clean water first, then return to the task starting point to start.



Note:


For first-time use, your robot will automatically work on the Vacuum and Mop mode.

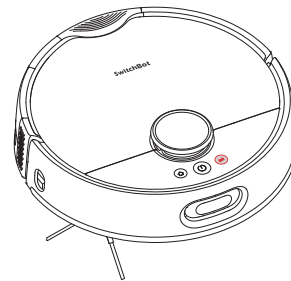
3 During the cleaning process, your robot will determine the timing for exchanging water itself. It will automatically return to the Water Station, drain the waste water and replenish clean water to ensure good cleaning performance.

Note:

- To facilitate the normal water exchange of the robot, please do not move the Water Station during the cleaning and mopping process. If there is a door hiding the Water Station, please keep the door open.
- If the battery is low, please charge it before starting the cleaning task.
- When the cleaning time is less than 10 minutes, the robot will perform the task twice by default.
- If the battery is insufficient during the cleaning process, the robot will automatically return to the Auto-empty Station for charging, and it will automatically resume cleaning and mopping after the battery is sufficient.
- When the robot is set to clean carpets, it will automatically raise the Roller Mop, and you can choose to bypass carpets in our app.
- Before starting each mopping task, please make sure that the Roller Mop is correctly installed.

Switching Mode



Press the  button once to change the cleaning mode of your robot. You will hear a sound and voice prompt when the mode switches successfully. It will be set to Vacuum and Mop mode by default.



Note:

In Vacuum mode, the Roller Mop will automatically raise and stop rolling.


Pausing Your Robot

Press any button on your robot to stop it while working. When paused, tap the  button to resume the previous cleaning task, tap the  button to finish the task, and your robot will go to the Water Station first to exchange water and then return to the Auto-empty Station to recharge.

Exchanging Water

- 1 While vacuuming or mopping, your robot will automatically go to the Water Station to exchange water if needed, and then go back to its previous position to resume cleaning.
- 2 After finishing a cleaning task, your robot will go to the Water Station first, have a deep cleaning and replenish clean water, then return to Auto-empty Station to recharge.

Recharging

After finishing a cleaning task, your robot will automatically return to Auto-empty Station to recharge. To manually send it back to recharge, press the  button on your robot. The indicator light will be breathing when charging.

Note: If the robot does not find the Auto-empty Station, it will automatically return to the starting position. Please manually dock it to the Auto-empty Station for charging.

Hibernation

If your robot is not operated for more than 10 minutes, it will automatically enter hibernation. Press any button to wake it up.

Note:

- The robot will not enter hibernation while charging.
- If the hibernation time exceeds 12 hours, the robot will automatically turn off (to turn it on, press and hold the Clean button for 3 seconds).

Do Not Disturb Mode

The default setting for this mode is from 22:00 to 08:00, and you can modify or disable it via our app. During the Do Not Disturb period, your robot will not automatically resume cleaning or empty dust. Volume and indicator light brightness will be reduced.

Child Lock

You can use the Child Lock function in our app to lock the robot buttons. You can unlock it via our app.

Restoring to Factory Settings

Press and hold the ⏻ + ⏮ + ⏭ button simultaneously for 6 seconds to restore the robot to factory settings. The voice prompt will say, "Restoring to factory settings."

Care and Maintenance

To keep your robot running at peak performance, care and maintain your robot regularly as shown in the sheet below. (Care and Replacement Frequency)

| Part | Care Frequency | Replacement Frequency |
|------------------------------------|--------------------|-----------------------|
| Omnidirectional Wheel | Clean as needed | / |
| Dustbin | | |
| Anti-Tangle Rubber Brush | Once every 2 weeks | 6 to 12 months |
| Dustbin Filter | | 3 to 6 months |
| Side Brush | | |
| Roller Mop | Monthly | 1 to 3 months |
| Waste Water Tank | | 6 to 12 months |
| Waste Water Gutter | | |
| Water Station | | 6 to 12 months |
| LDS Laser Radar | Monthly | / |
| Wall Follow Sensor | | |
| Front Docking Sensor | | |
| Back Docking Sensor | | |
| Infrared Obstacle Avoidance Sensor | | |
| Carpet Sensor | | |
| Cliff Sensor | | |
| Charging Contacts | | |
| Debris Evacuation Port | | |
| Water Inlet | | |
| Bottom Surface | | |

| Part | Care Frequency | Replacement Frequency |
|--|----------------|------------------------------|
| Dust Inlet (Auto-empty Station) | Monthly | / |
| Recharging Signal Emitter (Auto-empty Station) | | |
| Charging Contacts (Auto-empty Station) | | |
| Cleaning Solution (Water Station) | / | Add once every 1 to 3 months |
| Dust Bag | / | Replace every 1 to 3 months |

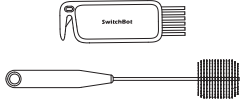
Replacement frequency may vary. Parts should be replaced if visible wear appears.

For free replacement parts, please contact our customer support at support@switch-bot.com

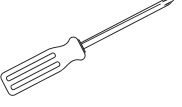
If you need to purchase a refill of SwitchBot Floor Cleaning Solution, please visit the authorized channels or our official website www.switch-bot.com

Daily Maintenance (Robot)

Cleaning tools needed



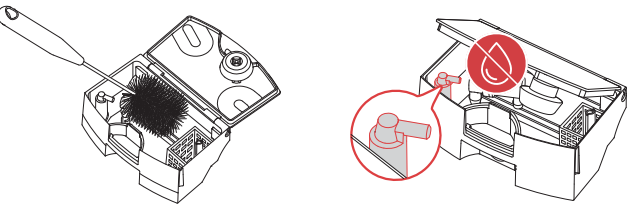
Provided



Not provided

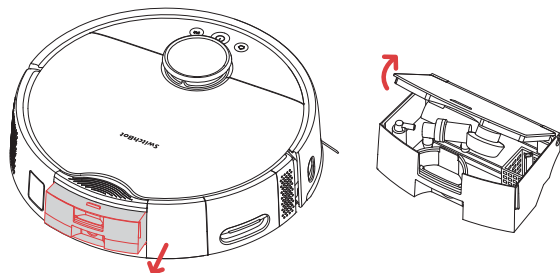
Waste Water Tank

- 1 Remove the Waste Water Tank from the robot and open the lid.

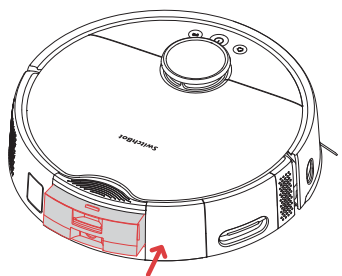


Note: Avoid getting water into the Air Extraction Port during the cleaning process.

- 2 Clean the sediment inside the Waste Water Tank.

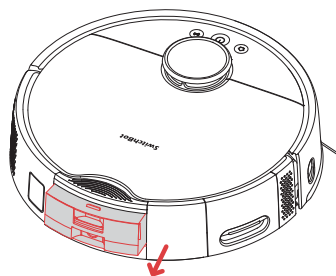


- 3 Install the Waste Water Tank back to the robot.

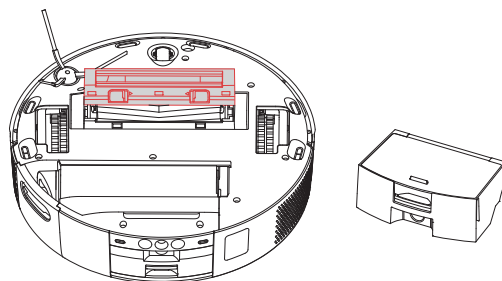


Anti-Tangle Rubber Brush

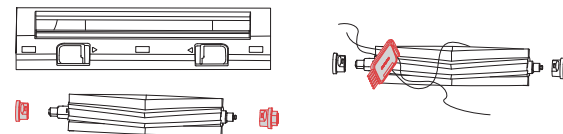
- 1 Remove the Waste Water Tank from the robot to prevent spillage when flipping the robot over.



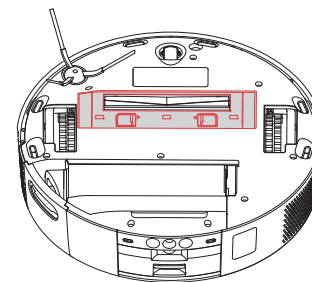
- 2 Flip the robot over, press the latch, and remove the brush cover.



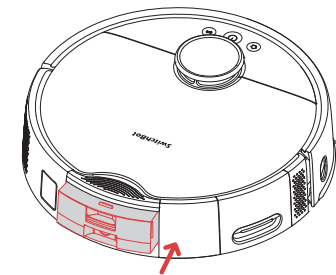
- 3 Remove the Anti-Tangle Rubber Brush, pull out the bearings at both ends, and clean any hair or dirt wrapped around the brush. You can use the provided small cleaning tool for this.



- 4 Reinstall the Anti-Tangle Rubber Brush onto the robot, make sure both ends of the brush are inserted into the robot's pegs, and then cover it with the brush cover.



- 5 Install the Waste Water Tank to the robot.

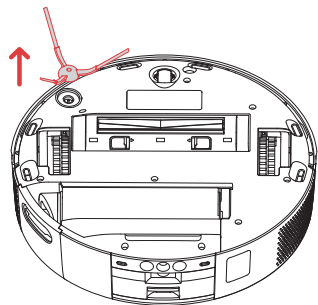


Important:

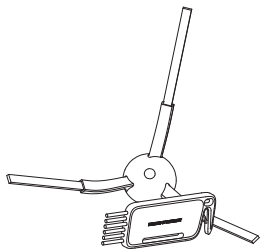
- Wipe off the dirt on the Anti-Tangle Rubber Brush with a damp cloth. If the brush is soaked, dry it thoroughly and avoid direct sunlight.
- Do not use corrosive cleaning liquids or disinfectants to clean the Anti-Tangle Rubber Brush.

Side Brush

- 1 Remove the Side Brush.

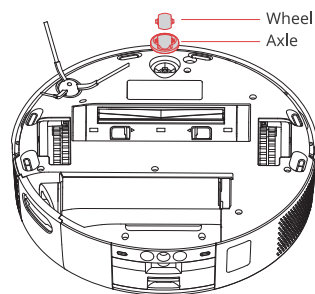


- 2 Clean the Side Brush and its mounting shaft, then reinstall it.

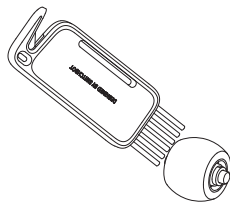


Omnidirectional Wheel

- 1 Use a small screwdriver or similar tool to pry out the wheel and clean it.

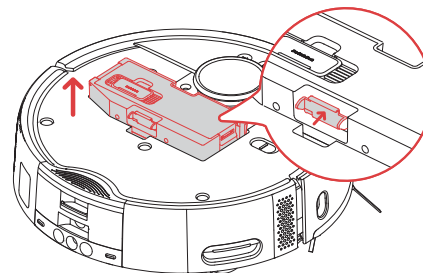


- 2 Rinse the wheel and axle to remove hair or dirt. Dry it and reattach the wheel, pressing it firmly into place.

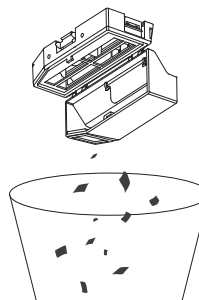


Dustbin

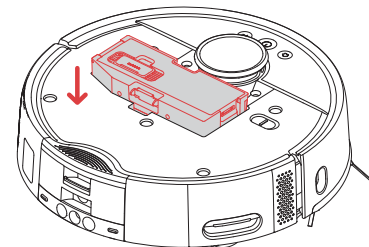
- 1 Open the robot's cover and remove the dustbin.



- 2 Open the dustbin lid and empty the trash. You can use the small cleaning tool provided for this.



- 3 Reinstall the dustbin.



Important:

If washing, do not add any detergent, as it may cause filter clogging. Make sure to dry the dustbin and the filter thoroughly before installing them back.

Dustbin Filter

- 1 Open the dustbin cover and remove the filter.

