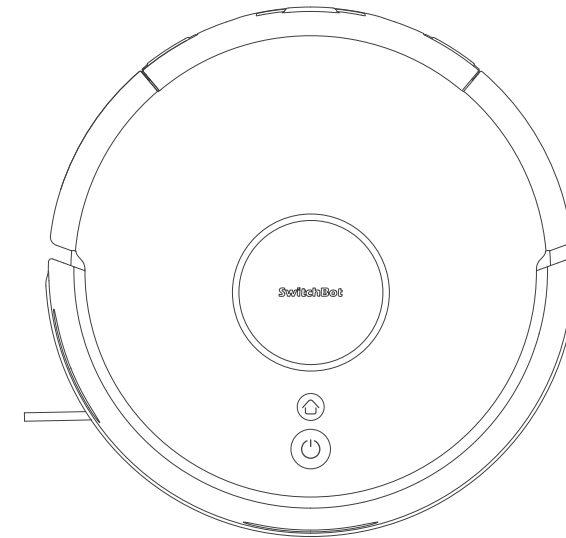


文件名称: K10+ Pro-SMS-EN-2403	设计师:WQY	完成时间:2024/03/22
版本号: V1.0-2304	成品尺寸:140mm×200mm	
材质和工艺: 封面 157g铜版纸+内页80g书写纸+封面过哑油+四色+一专+骑马钉 <div>2034C</div>		
更改内容:		
备注:红色、蓝色辅助线框不印刷、此页表格不印刷		

# SwitchBot

## Mini Robot Vacuum K10+ Pro

### User Manual



Contents

**Safety Information ----- 01**  
Warning ----- 01  
Precautions ----- 02

**Product Overview**  
Package Contents ----- 03  
List of Components ----- 03

**How to Use**  
Preparation ----- 06  
Using Your Mini Robot Vacuum K10+ Pro ----- 06

**Troubleshooting ----- 11**

**Care and Maintenance ----- 12**

**Technical Guide ----- 17**  
LED Indicator Light ----- 17  
Network Configuration ----- 17  
Firmware Upgrades ----- 17

**Specifications ----- 17**

**Warranty Information**  
Warranty ----- 18  
Contact & Support ----- 18

Scannen Sie den QR-Code, um die deutsche Version unseres Benutzerhandbuchs zu erhalten.

Scannez le code QR pour obtenir notre manuel d'utilisation en version française.

Escanee el código QR para obtener la versión en español de nuestro manual de usuario.

Scan de QR code voor de Nederlandse versie van onze gebruikershandleiding.

Scansionate il codice QR per ottenere la versione italiana del nostro manuale d'uso.

<https://www.switch-bot.com/pages/switchbot-user-manual>



User Manual

# Safety Information

## Warning

Before using this product, please finish reading the safety instructions. Any operation that does not follow the steps laid out in our manual may cause serious injury or damage.

## Restrictions

- This appliance can be used by children aged from 8 years and above and persons with reduced physical, sensory or mental capabilities or lack of experience and knowledge if they have been given supervision or instructions concerning use of the appliance in a safe way and understand the hazards involved. Children shall not play with the appliance. Cleaning and user maintenance shall not be made by children without supervision.
- This appliance is intended for household use.
- To reduce the risk of fire, electric shock, or injury:
  - a) Do not leave appliance when plugged in. Unplug from outlet when not in use and before servicing.
  - b) Do not use outdoors or on wet surfaces.
  - c) Do not allow to be used as a toy. Close attention is necessary when used by or near children.
  - d) Use only as described in this manual. Use only manufacturer's recommended attachments.
  - e) Do not use with damaged cord or plug. If appliance is not working as it should, has been dropped, damaged, left outdoors, or dropped into water, return it to a service center.
  - f) Do not pull or carry by cord, use cord as a handle, close a door on cord, or pull cord around sharp edges or corners. Do not run appliance over cord. Keep cord away from heated surfaces.
  - g) Do not unplug by pulling on cord. To unplug, grasp the plug, not the cord.
  - h) Do not handle plug or appliance with wet hands.
  - i) Do not put any object into openings. Do not use with any opening blocked; keep free of dust, lint, hair, and anything that may reduce air flow.
  - j) Keep hair, loose clothing, fingers, and all parts of body away from openings and moving parts.
  - k) Turn off all controls before unplugging.
  - l) Use extra care when cleaning on stairs.
  - m) Do not use to pick up flammable or combustible liquids, such as gasoline, or use in areas where they may be present.
  - n) Do not pick up anything that is burning or smoking, such as cigarettes, matches, or hot ashes.
  - o) Do not use without dust bag and/or filters in place.

## Battery and Charging

- Do not charge non-rechargeble batteries.
- This appliance contains batteries that are only replaceable by skilled persons.

- This appliance is only to be used with the power supply unit provided with the appliance.
- If the supply cord is damaged, it must be replaced by the manufacturer, its service agent or similarly qualified persons in order to avoid a hazard.
- This appliance contains 1 rechargeable lithium-ion battery with a rated capacity of 3200 mAh.
- The plug must be removed from the socket outlet before cleaning or maintaining the appliance.
- For the purposes of recharging the battery, only use the detachable supply unit provided with this appliance.
- Prevent unintentional starting. Ensure the switch is in the off-position before connecting to battery pack, picking up or carrying the appliance. Carrying the appliance with your finger on the switch or energizing appliance that have the switch on invites accidents.
- Recharge only with the charger specified by the manufacturer. A charger that is suitable for one type of battery pack may create a risk of fire when used with another battery pack.
- Use appliances only with specifically designated battery packs. Use of any other battery packs may create a risk of injury and fire.
- When battery pack is not in use, keep it away from other metal objects, like paper clips, coins, keys, nails, screws or other small metal objects, that can make a connection from one terminal to another. Shorting the battery terminals together may cause burns or a fire.
- Under abusive conditions, liquid may be ejected from the battery; avoid contact. If contact accidentally occurs, flush with water. If liquid contacts eyes, additionally seek medical help. Liquid ejected from the battery may cause irritation or burns.
- Do not use a battery pack or appliance that is damaged or modified. Damaged or modified batteries may exhibit unpredictable behavior resulting in fire, explosion or risk of injury.
- Do not expose a battery pack or appliance to fire or excessive temperature. Exposure to fire or temperature above 130°C (265°F) may cause explosion.
- Follow all charging instructions and do not charge the battery pack or appliance outside of the temperature range specified in the instructions. Charging improperly or at temperatures outside of the specified range may damage the battery and increase the risk of fire.
- Have servicing performed by a qualified repair person using only identical replacement parts. This will ensure that the safety of the product is maintained.
- Do not modify or attempt to repair the appliance or the battery pack (as applicable) except as indicated in the instructions for use and care.



[symbol IEC 60417-5957 (2004-12)]  
for indoor use only



[symbol ISO 7000-0790 (2004-01)]  
read operator's manual

## Precautions

- This product is used for floor cleaning in a home environment. Do not use it in outdoor, non-grounded, commercial, or industrial environments.
- Before using this product, make sure there are no cords present that may obstruct it.
- Remove fragile or valuable objects (such as vases) on the floor to prevent your robot from damaging them.
- Place the small cleaning tool in an area out of reach of children.
- Do not let hair, fingers or any other body parts near the dust suction port when in operation.
- Do not use this product to clean sharp objects (such as decoration debris, glass, or iron nails).
- Do not use this product to clean burning or smoking objects (such as cigarette butts).

# Product Overview

## Package Contents

Mini Robot Vacuum K10+ Pro × 1    Auto-Empty Station × 1    Mopping Pad Plate × 1    Edge-Sweeping Brush × 2  
Small Cleaning Tool × 1    Dust Bag × 2    Bin Filter × 2    Original Mopping Cloth Pack × 1    Quick Start Guide × 1  
User Manual × 1    After-sales Card × 1

## List of Components

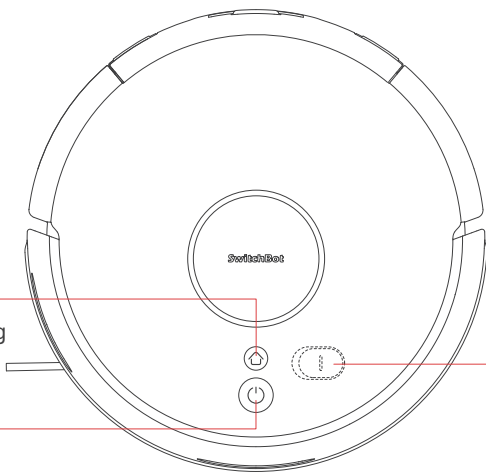
### Mini Robot Vacuum K10+ Pro

#### HOME Button

- Short press to recharge / pause recharging

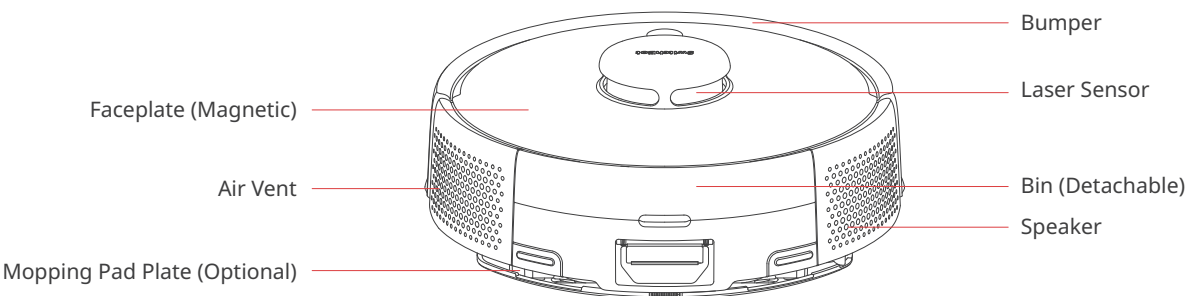
#### CLEAN Button

- Long press to turn on/off
- Short press to start/pause cleaning

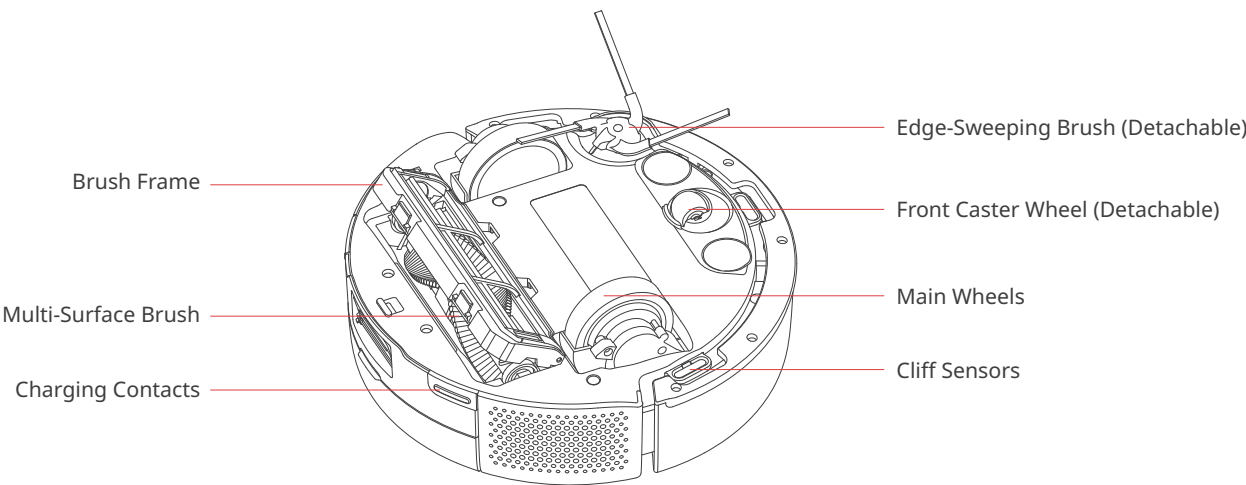


#### ON/OFF Switch

- Flip to "O" to turn OFF
- Flip to "I" to turn ON

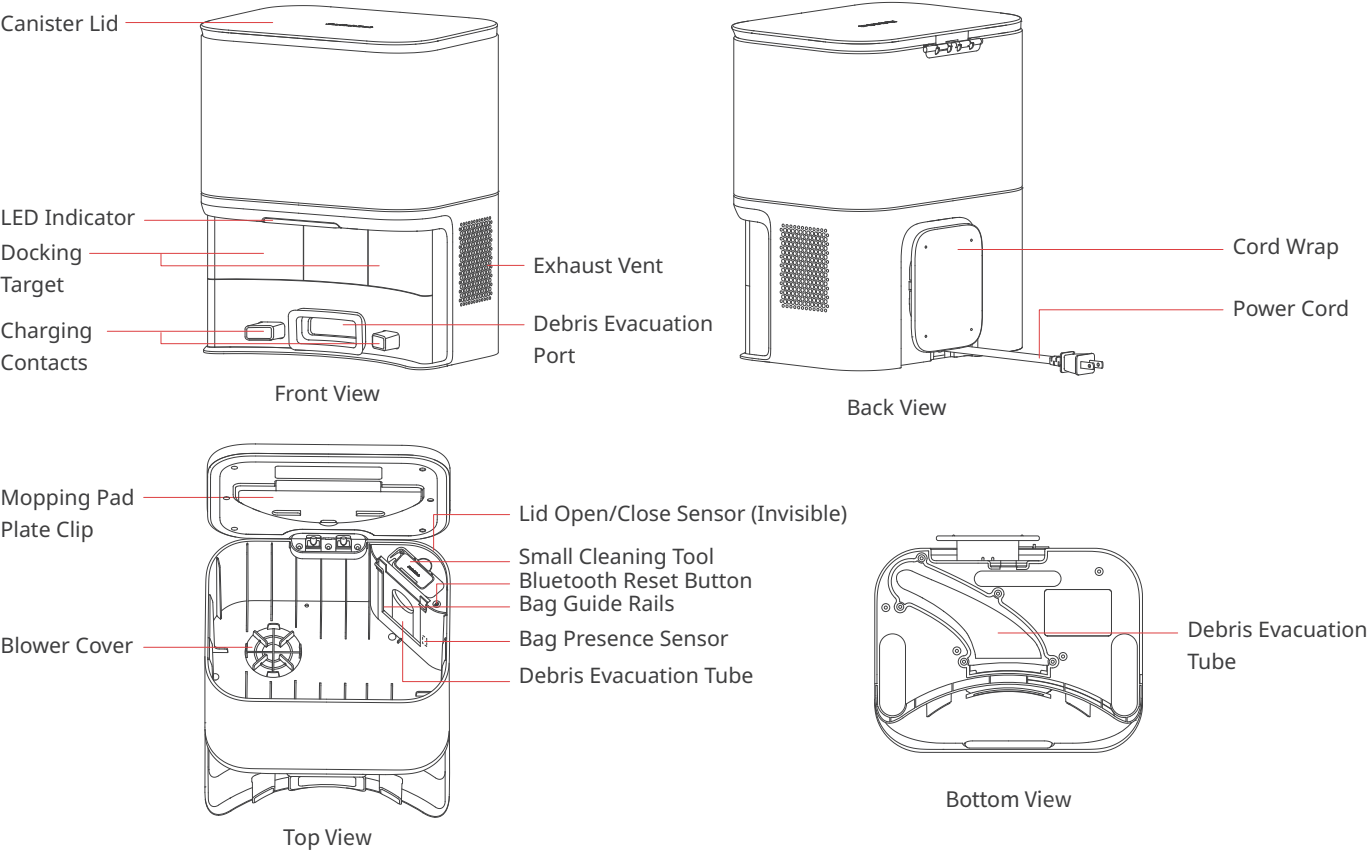


Top View



Bottom View

Auto-Empty Station



How to Use

Preparation

- You will need:
- A smartphone or tablet using Bluetooth 4.2 or later.
  - The latest version of our app, downloadable via the Apple App Store or Google Play Store.
  - A SwitchBot account, you can register via our app or sign in to your account directly if you already have one.

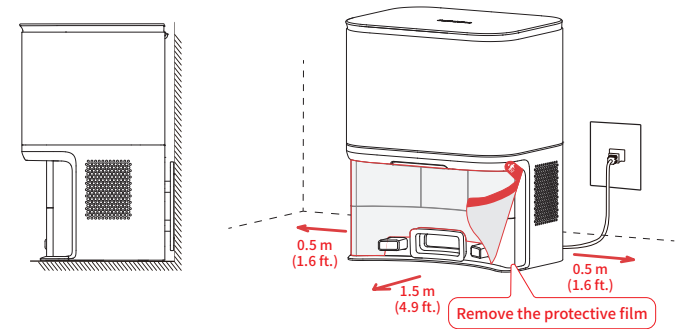


Using Your Mini Robot Vacuum K10+ Pro

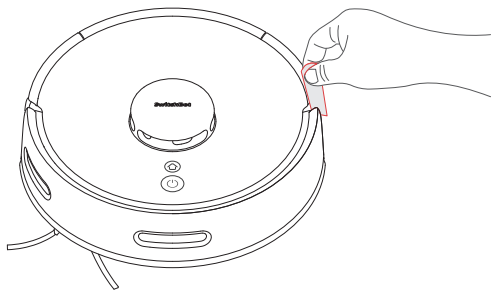
Positioning and Powering On

1. Place the Auto-Empty Station on a horizontal hard floor and connect the power supply.
- Remove the protective film covering the charging area of your dock to ensure your device can charge correctly.
  - Organize any excess cable to prevent your power cable from being stretched by your robot while cleaning.

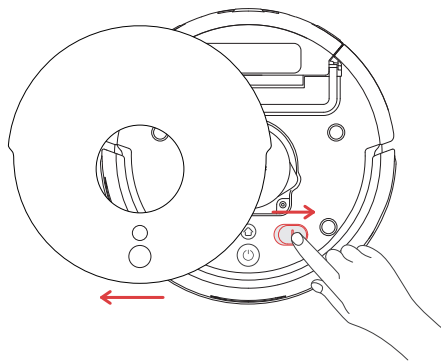
- Leave a space of 0.5 m (1.6 ft.) on both sides and 1.5 m (4.9 ft.) in front of the Auto-Empty Station. Make sure this area is away from sunlight.
- Ensure the Auto-Empty Station is placed away from stairs, other open areas and heat sources (such as heaters).
- Do not put the Auto-Empty Station on carpets or move it frequently. Otherwise your robot may fail to locate itself and map information (no-go zones, room names, etc.) may be lost. Your robot will create and save a new map during the next cleaning session.



2. Put your robot on the floor and remove the two protective foam strips on both sides.



3. Remove the faceplate and flip the ON/OFF switch to "I".



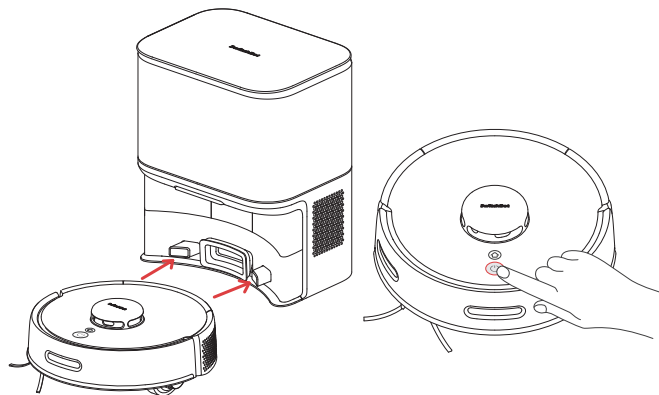
4. Wake up your robot.

Method 1: Press and hold the CLEAN button for 5 to 10 seconds, the light ring will illuminate with a voice prompt to indicate that your robot has been woken up.

Method 2: Attach your robot to the Auto-Empty Station. The LED indicator on the Auto-Empty Station will turn off and your robot will automatically turn on and start charging.

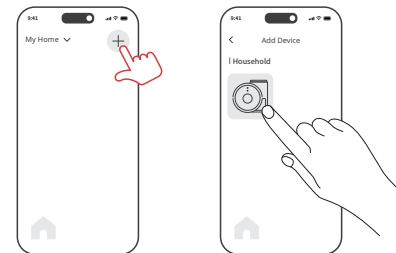
**Please note:**

- Your robot cannot be turned on when the battery is insufficient. It will automatically turn on when it is attached to the Auto-Empty Station.
- Your robot will only start cleaning tasks when the battery level is more than 30 %.
- Please ensure the Auto-Empty Station is always connected to a power source.



## Setting Up Your Mini Robot Vacuum K10+ Pro

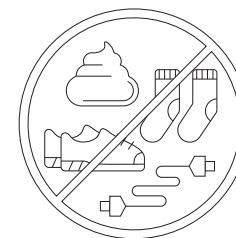
Open our app, tap the "+" button found in the top right-hand corner of the home page, find the Mini Robot Vacuum K10+ icon and select, then follow the step-by-step instructions to add your robot.



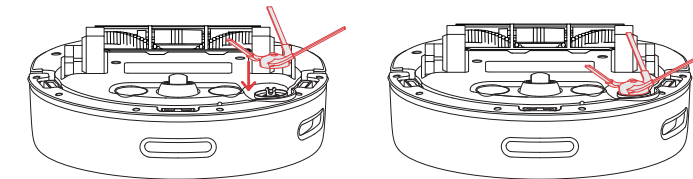
## Cleaning

### Vacuuming

1. Remove excess clutter from floors before cleaning, for example, socks, shoes and cords etc.

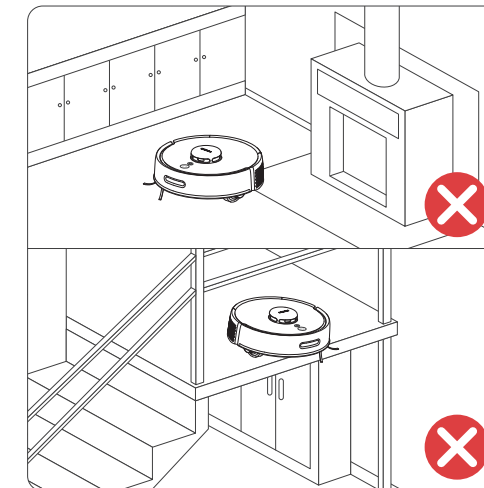


2. Install the Edge-Sweeping Brush on your robot. Align and press, you will hear a clicking sound when it is installed correctly.

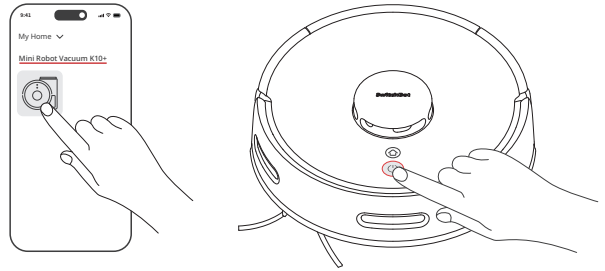


3. If your robot is operated near areas such as stairs or fireplaces, please add guardrails or other barriers to prevent potential risks, which could result in personal or property damage.

After mapping is completed, set no-go zones or virtual walls via our app to ensure your robot avoids these areas.

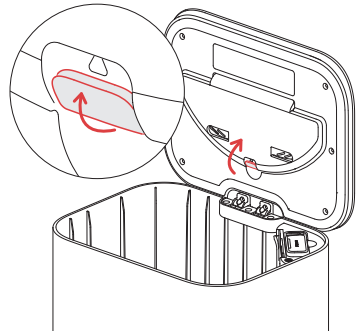


4. Press the CLEAN button to start cleaning, or control via our app.

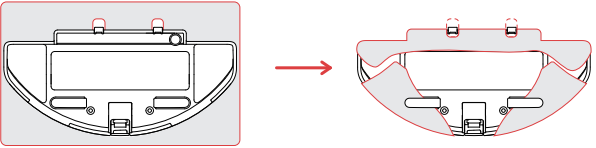


Mopping

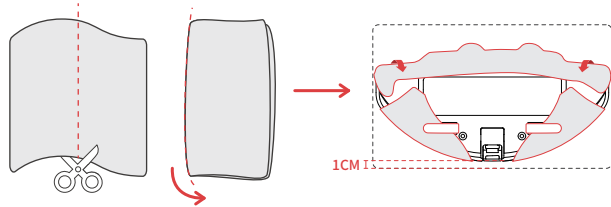
1. Open the Canister Lid and take the mopping pad plate off.



2. Attach a mopping cloth to the mopping pad plate.  
Option 1: Use the original mopping cloth

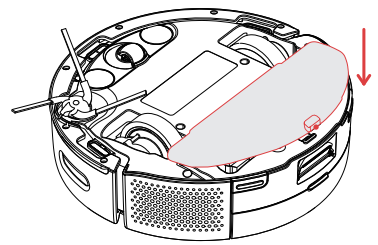


Option 2: Use a common mopping cloth

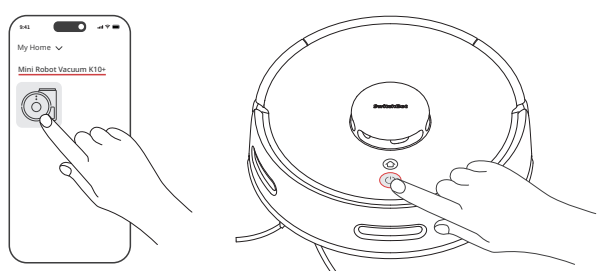


**Please note:** Dimensions of a common mopping cloth is usually approx. 30 × 20 cm (11.8 × 7.9 in.), while your robot's mopping pad plate is compatible with 20 × 15 cm (7.9 × 5.9 in.) cloth. If you use a common mopping cloth, fold or cut it in half before attaching to the mopping pad plate.

3. Install the mopping pad plate at the bottom of the Multi-Surface Brush covering the brush.

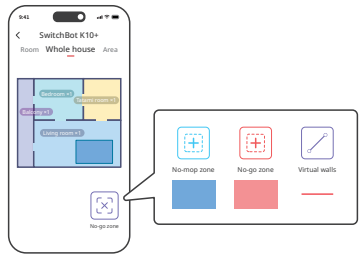


4. Press the CLEAN button to start mopping, or control via our app.

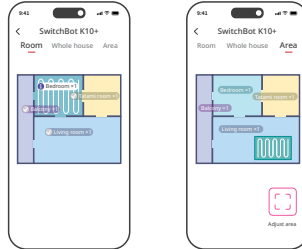


Please note:

① Set no-go zones in the app so your robot won't mop and wet areas like carpets.



② The mopping cloth will become dry after 20 or 30 minutes of use. It is recommended to only mop designated rooms or areas set in the app.



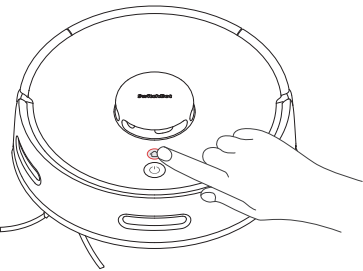
③ The dry mopping cloth can still wipe away some dust or hair, but it is not as effective as when it's wet. Please replace the dry mopping cloth in time when mopping.

Charging

To send your robot back to the Auto-Empty Station and recharge, press the HOME button on your robot or control via our app.

When pausing: tap HOME once, your robot will return to the Auto-Empty Station to recharge.

When cleaning: tap HOME once, your robot will pause cleaning; tap again, your robot will return to the Auto-Empty Station to charge and collect dust.

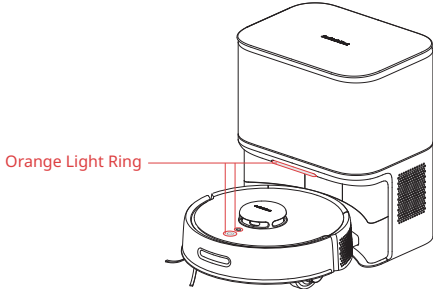




## Troubleshooting

1. If your robot bumps into furniture or walls frequently while cleaning, check if you've removed the protective foam strips on both sides. These protective foam strips may stop the robot from normal contracting and rebounding when bumping into obstacles.
2. If your robot fails to connect to Wi-Fi, follow the instructions below and try again.
  - Check whether the ON/OFF Switch has been switched to "I".
  - Your robot can only connect to a 2.4GHz Wi-Fi. 5GHz Wi-Fi is not supported. Check your Wi-Fi band if your robot is unable to connect to the Internet.
  - Before configuring your network, please disable mobile data on your phone and connect via Wi-Fi only.
  - For smartphones running iOS 14 or above, please enable location permissions for our app when using.
  - For phones using Android operating systems, please make sure all permissions are allowed when using our app.
  - Make sure wireless SSID broadcast is enabled on your router.
  - Make sure your robot's Wi-Fi is not in your router's blacklist.

3. Your robot will tell you when something is wrong by playing an audio alert and turning the light ring into orange. You can get more information, including video tutorials via our app.



4. If you are not sure whether your robot is in paused state or has finished a cleaning task, check via our app.

Please visit our website or scan the QR code below for more information.  
<https://support.switch-bot.com/hc/en-us/categories/12968105432855>



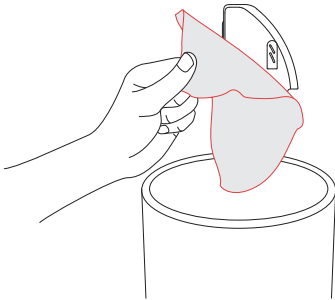
## Care and Maintenance

To keep your robot running at peak performance, perform the procedures on the following pages.  
 If you notice the robot picking up less debris from your floor, empty the bin, clean the brushes, and clean or replace the filter if needed. Replace the dust bag in time when it is full.

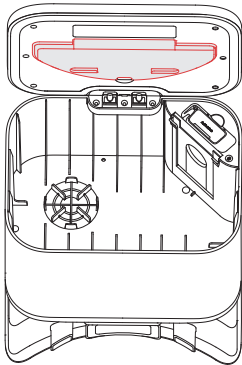
Part	Care Frequency	Replacement Frequency
Bags		Every 70 days
Bin	Wash bin as needed	
Cliff Sensor	Clean once a month or when prompted by the app	
Filter	Clean once a month or when prompted by the app	Every 2 or 3 months
Front Caster Wheel	Clean once a month. Clean more if your pet sheds a lot.	Every 12 months
Edge-Sweeping Brush	Clean once a month. Clean more if your pet sheds a lot.	Every 12 months
Multi-Surface Brush	Clean once a month. Clean more if your pet sheds a lot.	Every 12 months

## Cleaning the Mopping Pad Plate

1. Remove the mopping pad plate and throw away the disposable mopping cloth. Wash the pad plate with water.

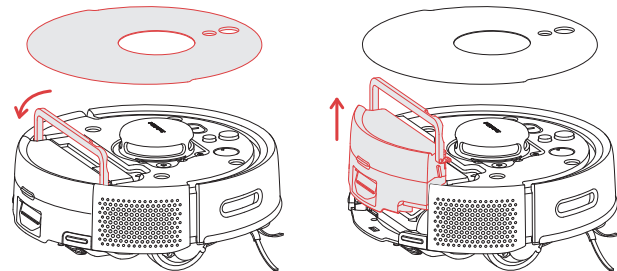


2. Place the Mopping Pad Plate back in the Canister Lid.

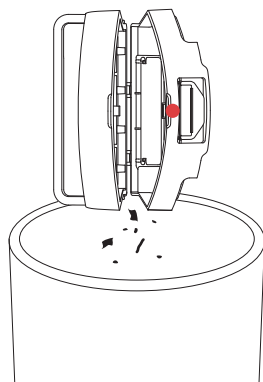


## Washing the Bin

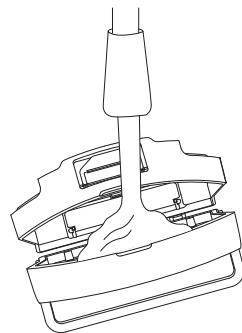
1. Open the faceplate and remove bin.



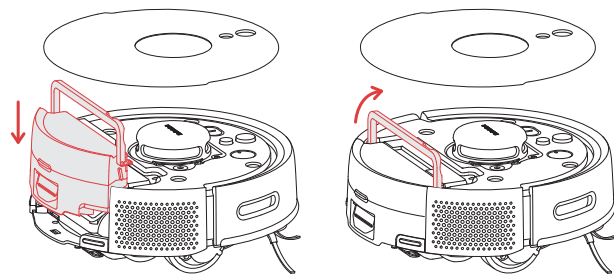
2. Press the red area (marked in the picture) to open and empty the bin.



3. Rinse the bin using warm water and dry the bin.

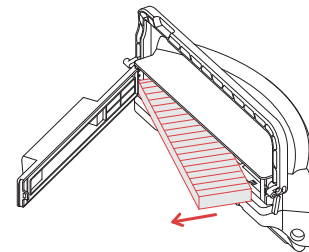


4. Place the bin back in the robot.

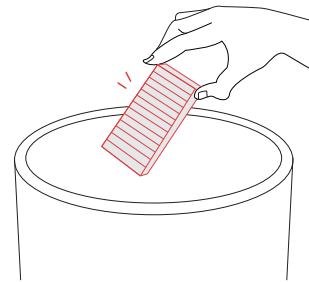


## Cleaning the Filter

1. Remove the bin. Remove the filter by grasping the end and pulling out.



2. Remove the debris by tapping the filter against your trash container.

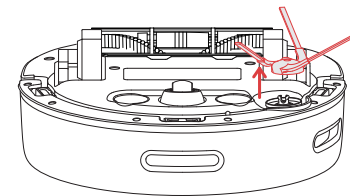


3. Reinsert filter and place bin back in the robot.

**Please note:** Your robot will not run if the filter is not installed correctly. Replace the filter every 3 months.

## Cleaning the Edge-Sweeping Brush

1. Pull to remove the Edge-Sweeping Brush.

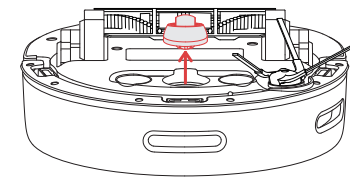


2. Remove any hair or debris and replace the brush.
3. Align and reinstall the brush.

**Please note:** Replace the Edge-Sweeping Brush every one year.

## Cleaning the Front Caster Wheel

1. Pull firmly on the front wheel to remove it from the robot.

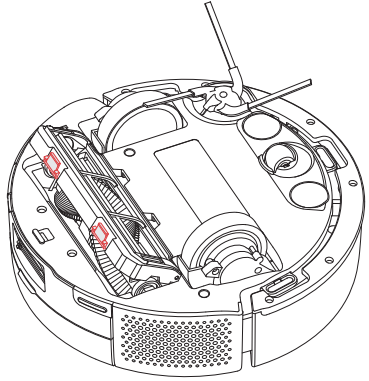


2. Remove any debris from inside the wheel cavity.
3. Reinstall the wheel. Make sure the wheel clicks into place.

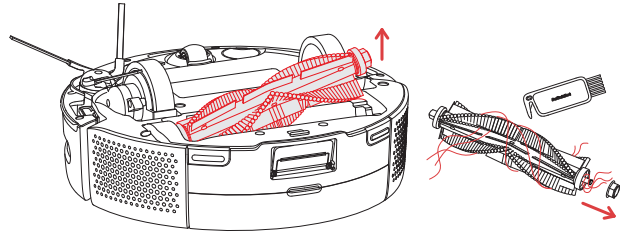
**Please note:** Replace the Front Caster Wheel every one year.

## Cleaning the Multi-Surface Brush

1. Press two release tabs and open the brush frame.



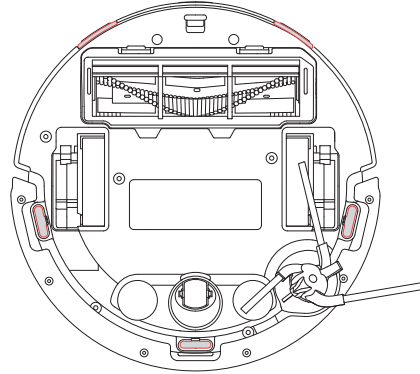
2. Remove the brush from the robot by holding its left end. Remove the brush caps from the end. Use the small cleaning tool to remove any hair and debris that has collected beneath the caps. Reinstall the brush caps and brush frame.



**Please note:** Replace the Multi-Surface Brush every 12 months.

## Cleaning the Sensors and Charging Contacts

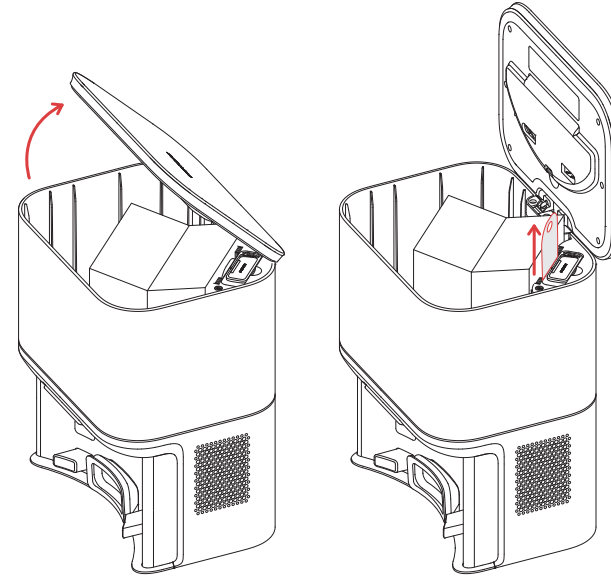
Wipe sensors and charging contacts with a clean, dry cloth.



**Please note:** Do not spray cleaning solution or water onto the sensors, sensor openings or charging contacts.

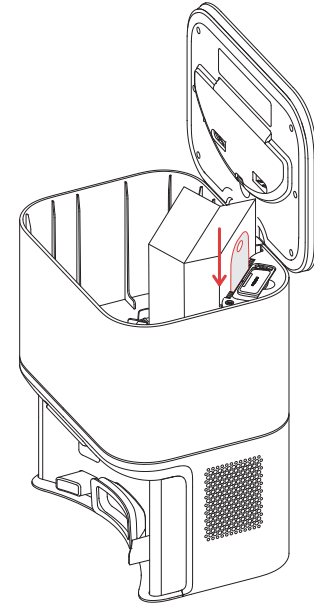
## Replacing the Dust Bag

1. Lift up on the canister lid to open.
2. Pull up on the hard paper card to remove the bag from the canister.



3. Discard the used bag.

4. Install a new bag, sliding the card into the guide rails. Press down on the lid making sure it is completely closed.



## Technical Guide

### LED Indicator Light

Light Ring Indicator	Descriptions
Solid White	The robot is fully charged or cleaning properly.
Slowly Flashing White	The robot is charging.
Blinking White	The robot is ready to configure Wi-Fi.
Solid Orange	Low battery.
Blinking Orange	The robot has run out of power or an error occurred.

### Network Reconfiguration

Press and hold the HOME and CLEAN button for 3 seconds to reconfigure your Wi-Fi network.

### Firmware Upgrades

In order to improve user experience, we will regularly release firmware updates to introduce new functions and solve any software defects that may occur during usage. When a new firmware version is available, we will send an upgrade notification to your account via our app. When upgrading, please make sure your product has sufficient battery and make sure your smartphone is within range to prevent interference.

## Specifications

### Mini Robot Vacuum K10+ Pro

Size: 248 × 248 × 92 mm (9.8 × 9.8 × 3.6 in.)  
Weight: Approx. 2.3 kg (81.1 oz.)  
Rated Power: 35 W  
Battery Voltage: 14.4 V  
Battery Capacity: 3200 mAh  
Operating Temperature: 0 °C to 30 °C (32 °F to 86 °F)  
Connectivity: 2.4 GHz Wi-Fi, Bluetooth 4.2 or later  
System Requirements: iOS 14.0+, Android OS 5.0+

### Auto-Empty Station

Size: 261 × 210 × 323 mm (10.3 × 8.3 × 12.7 in.)  
Rated Power (Charging): 30 W  
Rated Power (Emptying Dust): 950 W  
Rated Input: 24 V  $\overline{\square}$  1 A

## Warranty Information

### Warranty

We warrant to the original owner of the product that the product will be free from defects in materials and workmanship. Please note that this limited warranty does not cover:

1. Products submitted beyond the original limited warranty period.
2. Products on which repairs or modifying have been attempted.
3. Products subjected to falls, extreme temperatures, water, or other operating conditions outside the product specifications.
4. Damage due to natural disaster (including but not limited to lightning, flood, tornado, earthquake, or hurricane, etc.).
5. Damage due to misuse, abuse, negligence or casualty (e.g. fire).
6. Other damage that is not attributable to defects in the manufacture of product materials.
7. Products purchased from unauthorized resellers.
8. Consumable parts (including but not limited to batteries).
9. Natural wear of the product.

## Contact & Support

Setup and Troubleshooting: [support.switch-bot.com](https://support.switch-bot.com)

Support Email: [support@switch-bot.com](mailto:support@switch-bot.com)

Feedback: If you have any concerns or problems when using our products, please send feedback via our app through the Profile > Help & Feedback page.

### CE/UKCA Warning

To comply with RF exposure requirements, a minimum separation distance of 20 cm must be maintained between the user's body and the device, including the antenna. Use only the supplied or an approved antenna. This device is in compliance with the essential requirements and other relevant provisions of directive 2014/53/EU. All essential radio test suites have been carried out.

#### CE DOC

Hereby, Woan Technology (Shenzhen) Co., Ltd. declares that the radio equipment type W3011020/W3011030 is in compliance with Directive 2014/53/EU. The full text of the EU declaration of conformity is available at the following internet address: [support.switch-bot.com](https://support.switch-bot.com)

#### UKCA DOC

Hereby, Woan Technology (Shenzhen) Co., Ltd. declares that the radio equipment type W3011020/W3011030 is in compliance with UK Radio Equipment Regulations (SI 2017/1206). The full text of the UK declaration of conformity is available at the following internet address: [support.switch-bot.com](https://support.switch-bot.com)

This product can be used in EU member states and UK.

Manufacturer: Woan Technology (Shenzhen) Co., Ltd.  
Address: Room 1101, Qiancheng Commercial Center, No. 5 Haicheng Road, Mabu Community, Xixiang Subdistrict, Bao'an District, Shenzhen, Guangdong, P.R.China, 518100

Operation frequency

Mini Robot Vacuum K10+  
Wi-Fi: 2412 MHz to 2472 MHz  
BLE: 2402 MHz to 2480MHz

Auto-Empty Station  
BLE: 2402 MHz to 2480 MHz  
Operation temperature: 0 °C to 30 °C

FCC Warning

This device complies with Part 15 of the FCC Rules. Operation is subject to the following two conditions:  
(1) This device may not cause harmful interference.  
(2) This device must accept any interference received, including interference that may cause undesired operation.

NOTE: This equipment has been tested and found to comply with the limits for a Class B digital device, pursuant to part 15 of the FCC Rules. These limits are designed to provide reasonable protection against harmful interference in a residential installation. This equipment generates uses and can radiate radio frequency energy and, if not installed and used in accordance with the instructions, may cause harmful interference to radio communications. However, there is no guarantee that interference will not occur in a particular installation. If this equipment does cause harmful interference to radio or television reception, which can be determined by turning the equipment off and on, the user is encouraged to try to correct the interference by one or more of the following measures:  
- Reorient or relocate the receiving antenna.  
- Increase the separation between the equipment and receiver.  
- Connect the equipment into an outlet on a circuit different from that to which the receiver is connected.  
- Consult the dealer or an experienced radio/TV technician for help.

NOTE: This equipment has been tested and found to comply with the limits for a Class B digital device, pursuant to part 15 of the FCC Rules.

These limits are designed to provide reasonable protection against harmful interference in a residential installation. This equipment complies with FCC radiation exposure limits set forth for an uncontrolled environment. This equipment should be installed and operated with minimum distance 20 cm between the radiator and your body.

FCC Radiation Exposure Statement

This equipment complies with FCC radiation exposure limits set forth for an uncontrolled environment. This equipment should be installed and operated with minimum distance 20 cm between the radiator & your body.

IC Warning

This device contains license-exempt transmitter(s)/receiver(s) that comply with Innovation, Science and Economic Development Canada's license-exempt RSS(s). Operation is subject to the following two conditions:  
(1) This device may not cause interference.  
(2) This device must accept any interference, including interference that may cause undesired operation of the device.

L'émetteur/récepteur exempt de licence contenu dans le présent appareil est conforme aux CNR d'Innovation, Sciences et Développement économique Canada applicables aux appareils radio exempts de licence. L'exploitation est autorisée aux deux conditions suivantes :  
(1) L'appareil ne doit pas produire de brouillage;  
(2) L'appareil doit accepter tout brouillage radioélectrique subi, même si le brouillage est susceptible d'en compromettre le fonctionnement.

IC Radiation Exposure Statement

This equipment complies with the IC radiation exposure limits established for uncontrolled environment. This equipment must be installed and operate at least 20 cm from a radiator or your body. Cet équipement est conforme aux limites d'exposition aux rayonnements de la IC établies pour unenvironnement non contrôlé. Cet équipement doit être installé et fonctionner à au moins 20cmde distance d'un radiateur ou de votre corps.

NOTE: The manufacturer is not responsible for any radio or TV interference caused by unauthorized modifications to this equipment, Such modifications could void the user's authority to operate the equipment.