

User Guide

Federal Communications Commission (FCC) Statement

This device complies with part 15 of the FCC Rules. Operation is subject to the following two conditions: (1) This device may not cause harmful interference, and (2) this device must accept any interference received, including interference that may cause undesired operation.

**Note:** This equipment has been tested and found to comply with the limits for a Class B digital device, pursuant to part 15 of the FCC Rules. These limits are designed to provide reasonable protection against harmful interference in a residential installation. This equipment generates, uses and can radiate radio frequency energy and, if not installed and used in accordance with the instructions, may cause harmful interference to radio communications. However, there is no guarantee that interference will not occur in a particular installation. If this equipment does cause harmful interference to radio or television reception, which can be determined by turning the equipment off and on, the user is encouraged to try to correct the interference by one or more of the following measures:

- Reorient or relocate the receiving antenna.
- Increase the separation between the equipment and receiver.
- Connect the equipment into an outlet on a circuit different from that to which the receiver is connected.
- Consult the dealer or an experienced radio/TV technician for help.

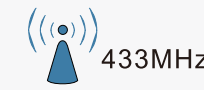
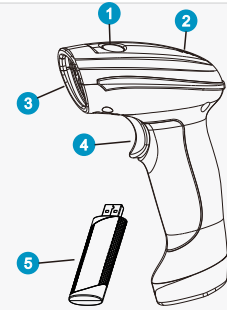
**Warning:** Changes or modifications made to this device not expressly approved by **Shenzhen Findo Technology Co., LTD** may void the FCC authorization to operate this device.  
**Note:** The manufacturer is not responsible for any radio or TV interference caused by unauthorized modifications to this equipment. Such modifications could void the user's authority to operate the equipment.

Warning: Do not arbitrary scan the barcodes in this manual



Description

- 1 Indicator LED
- 2 Sound hole
- 3 Scan Window
- 4 Scan Button
- 5 Wireless Receiver



1. Plug the receiver into the USB interface of the main device(Computer or Tablet PC)
2. Scan Setting Barcode "Pair Status" in 20 seconds.
3. When you hear a "Bi" sound it means you have successfully connected.
4. Now you can use.

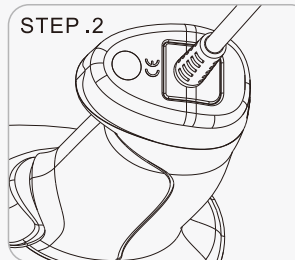
Charging and cable transmission

Cable Transmission:Using a cable connected to the main device can be used.

Charger:Using a cable connected to the phone charger or computer USB.

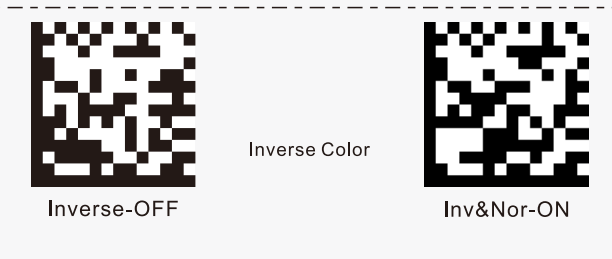
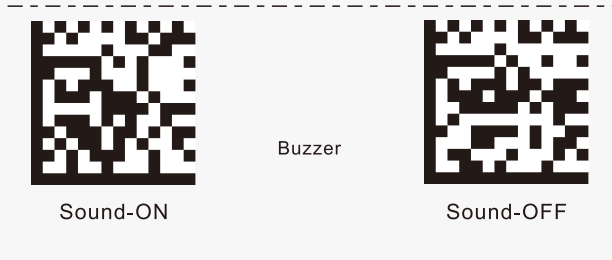
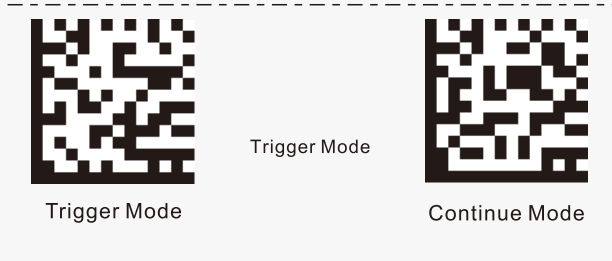
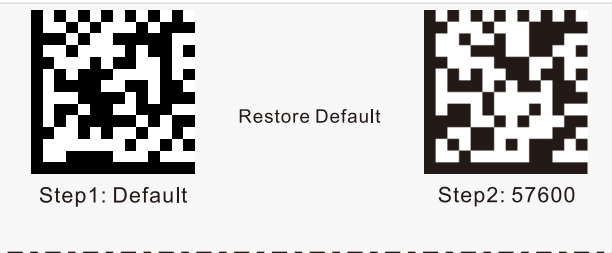
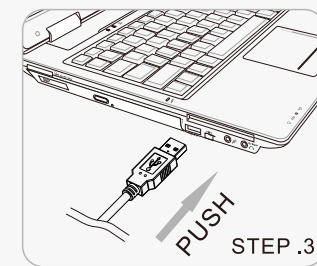
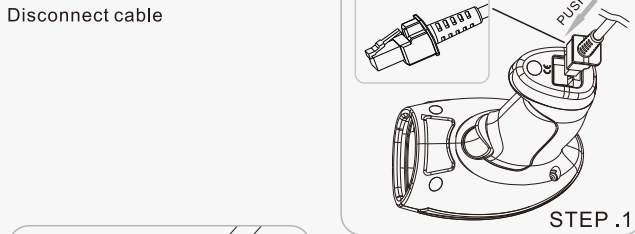
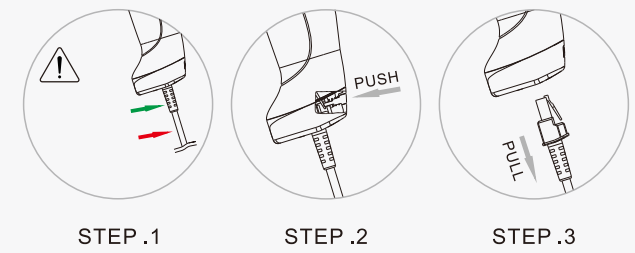
reference charger specifications: Input:100~240V/50Hz, Output:5V 2000mA with CE mark

Disconnect cable



It is strongly recommended not to connect the scanner to your front USB interface of desktop computer . Due to different degrees of aging computer may appear insufficient power supply situation. Scanner may also appear unstable, and many other fault performance.

Disconnect cable



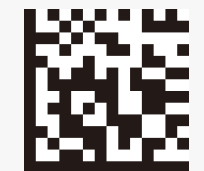
Add Custom Prefix

Step2: Add Hex Data

Example/ 「ODE」  
Scan the numeric barcodes:9  
,9,4,F,4,4,4,5

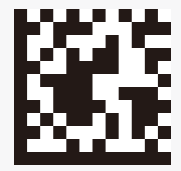


Step1: suffix



Step3: save

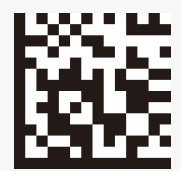
Step1: suffix



Step2: Add Hex Data

Example/ 「ODE」  
Scan the numeric barcodes:9  
,9,4,F,4,4,4,5

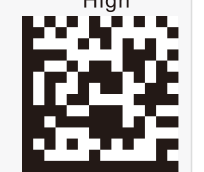
Step3: save



Add Custom Suffix



Low



High



Middle



LF



CR



TAB

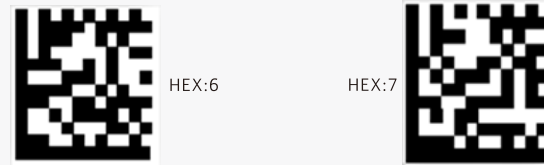


CRLF

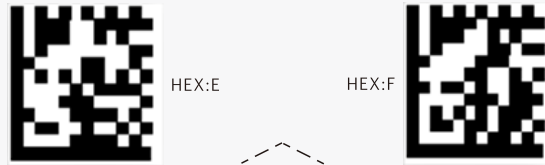


General Configuration

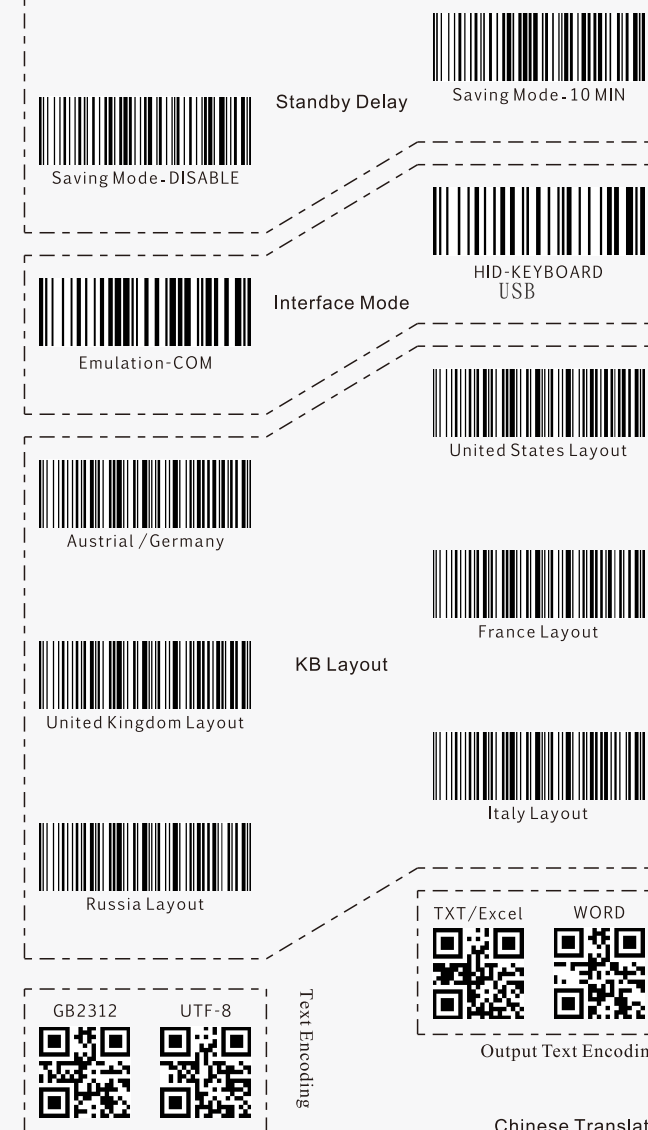
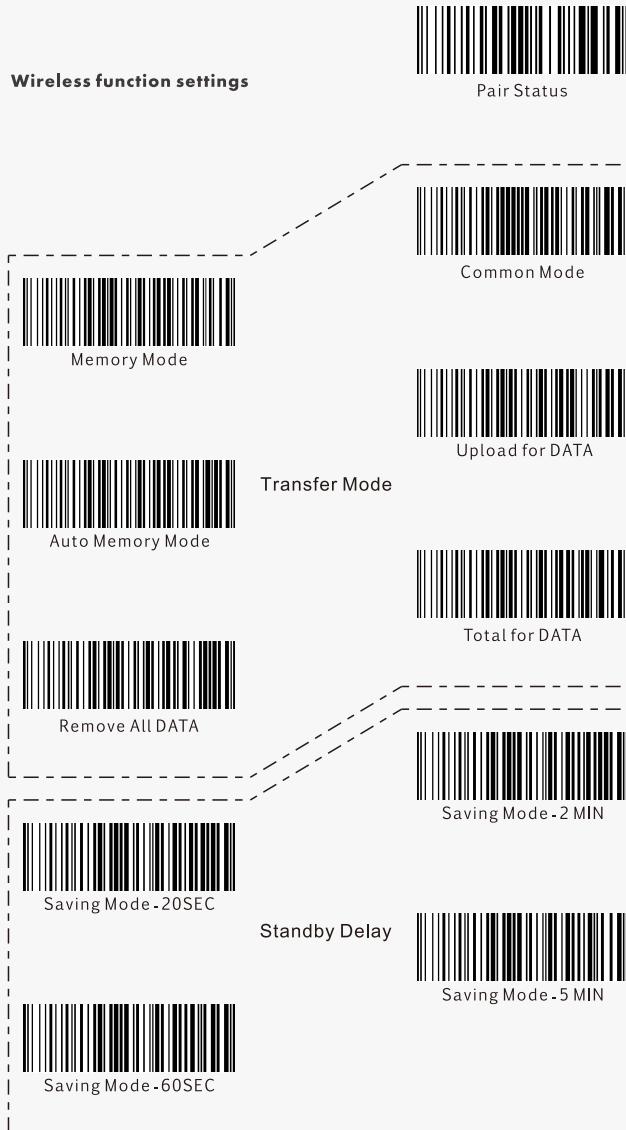
Beeper Volume



HEX:7



HEX:0



EMC (Article 3.1b)	ETSI EN 301 489-1 V 1.9.2 (2011-09)	Report No.: CTL1611210604-WE
	ETSI EN 301 489-3 V1.6.1 (2013-08)	
	ETSI EN 300 220-1 V2.4.1 (2012-05)	Report No.: CTL1611210604-WR
	ETSI EN 300 220-2 V2.4.1 (2012-05)	
Safety (Article 3.1a)	EN 60950-1:2006+A1:2009+A1:2010+A12:2011+A2:2013	Report No.: CTL1611210604-WH
Health (Article 3.1a)	EN 62479: 2010	Report No.: CTL1611210604-WS

C € 0700

