



Smart Fever Control
ATBF-1000

thermoblue®

Available on the App store
Available on the Android
Bluetooth

Product details

Length	225mm
Weight	About 20G(No battery)
Range	32°C~43°C
Precision	±0.1°C
Unit	°C or F
Battery	CR2032 3V (210mAh)
Working time	1000hours
Adjustable length	150mm-180mm
Limited distance	About18M(No barrier)
Connection mode	BLE4.0
Download APP	www.thermoblue.com

FCC Statement

This device complies with Part 15 of the FCC rules. Operation is subject to the following two conditions: 1) this device may not cause harmful interference, and 2) this device must accept any interference received, including interference that may cause undesired operation.

Note: This equipment has been tested and found to comply with the limits for a Class B digital device, pursuant to part 15 of the FCC Rules. These limits are designed to provide reasonable protection against harmful interference in a residential installation. This equipment generates uses and can radiate radio frequency energy and, if not installed and used in accordance with the instructions, may cause harmful interference to radio communications. However, there is no guarantee that interference will not occur in particular installation. If this equipment does cause harmful interference to radio or television reception, which can be determined by turning the equipment off and on, the user is encouraged to try to correct the interference by one or more of the following measures:

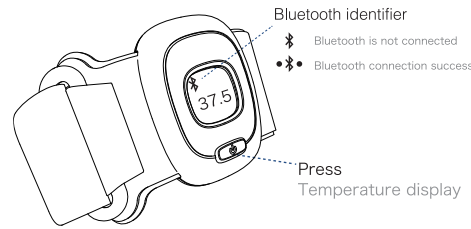
- Reorient or relocate the receiving antenna.
- Increase the separation between the equipment and receiver.
- Connect the equipment into an outlet on a circuit different from that to which the receiver is connected.
- Consult the dealer or an experienced radio/TV technician for help.

Changes or modifications not expressly approved by the party responsible for compliance could void the user's authority to operate the equipment.

Acknowledge

First of all, thank you for choosing **babyFever** infant baby intelligent thermometer. These instructions give you the information required to safely operate the equipment. It is important to read these instructions before using the thermometer for the first time. **babyFever** infant baby intelligent thermometer is small, portable and simple to operate. The thermometer is designed to take accurate 24 hours real-time measurement. It also includes a high temperature alarm, a basic medical system and historical data.

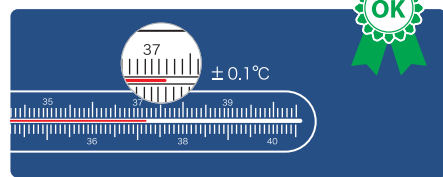
Function keys



* Please connect to the app within the five minutes the screen remains illuminated.

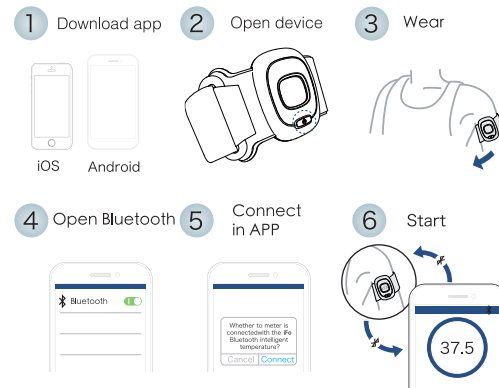


• Through the fabric safety inspection

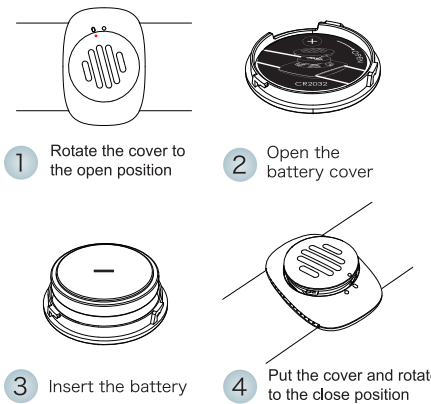


• Through the measurement accuracy test

Operation manual



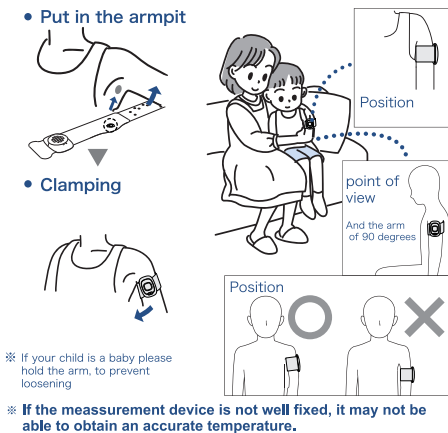
Replace the battery



Warranty notes

1. Because of the defects in materials and workmanship, the product can be send back. Once the package is received, a refund will be made which not includes the shipping costs.
2. The package to be returned must include a copy of the original invoice and a note with the reasons by which the package is wanted to be returned.
3. Thermoblue warranty does not cover product malfunction arising from:
 - (1) The warranty expires ;
 - (2) Damages result from operation, maintenance which are not according to the user guide;
 - (3) Damages caused by people: burnt down or waterlogging;
 - (4) Abrasion, corrosion and discoloration after regular use.

The correct way of wearing



* If your child is a baby please hold the arm, to prevent loosening.

* If the measurement device is not well fixed, it may not be able to obtain an accurate temperature.

Safety information

1. Do not drop and twist the thermometer.
2. Do not let the part above the display panel to be in contact with liquid.
3. The display panel can be disinfected by alcohol, while the part above the display panel can be cleaned by a dry cloth. Do not put it into water or disinfect it in boiling water, because it has no waterproof.
4. Do not disassemble the product unless replacing the battery.
5. The thermometer can be damaged if stored in a high temperature area or exposed directly to the sun. Do not keep the product in contact with any chemical solvents in order to avoid dysfunctions caused by chemical reactions.
6. The battery must be recycled or disposed of separately from household waste, which protects human health, water resource and the environment.

Note: This product uses wireless Bluetooth to communicate with cell phones, which is not always stable and reliable under any circumstance. Also, the app data from the related thermometer could not replace clinical diagnostics.