



## Flyears smart speaker

### Flyears 1

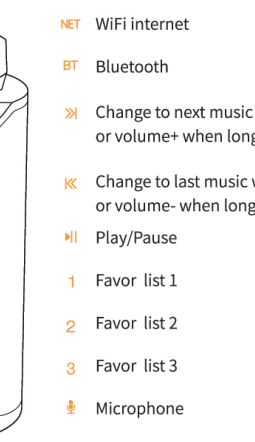
Support Amazon Alexa



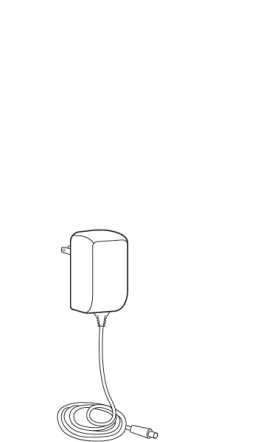
iOS

Android

## Getting to know Flyears



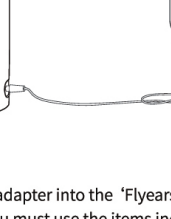
- NET** WiFi internet
- BT** Bluetooth
- >** Change to next music when quick tap or volume+ when long press
- <** Change to last music when quick tap or volume- when long press
- ⏮** Play/Pause
- 1** Favor list 1
- 2** Favor list 2
- 3** Favor list 3
- 🎤** Microphone



power adapter

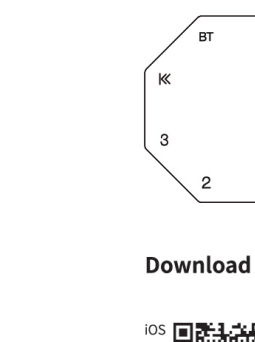
power

Aux



power adapter

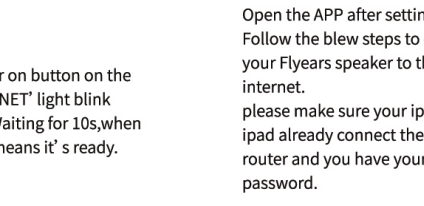
## Plug in your Flyears speaker



Power adapter

Plug the power adapter into the 'Flyears speaker' and then into a power outlet. You must use the items included in the original Flyears package for optimal performance.

## The 'NET' light blink



The 'NET' light blink

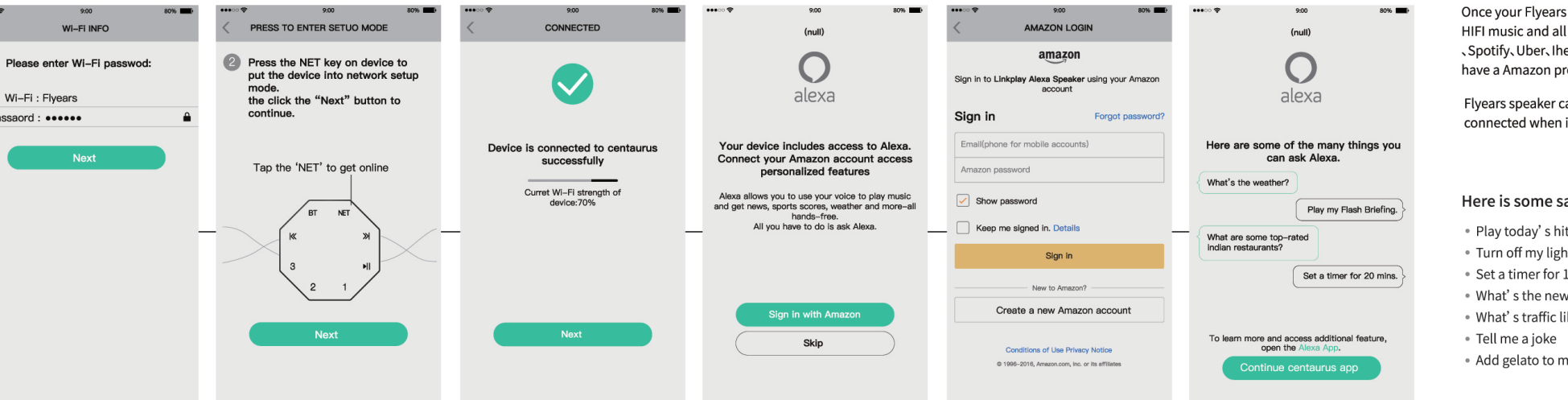
Short press the power on button on the speaker's back. The 'NET' light blink means it's starting. Waiting for 10s, when a voice notes sound means it's ready.

## Configuration

Open the APP after setting up. Follow the below steps to connect your Flyears speaker to the internet. please make sure your iPhone or iPad already connects the WiFi router and you have your WiFi password.



setting up



## Experience

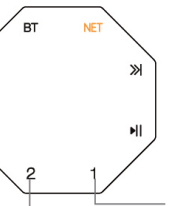
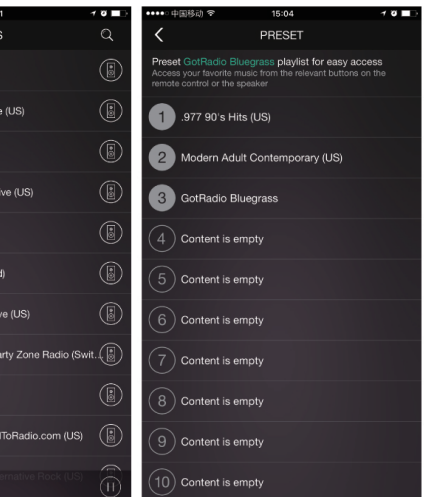
Once your Flyears speaker connects to the internet, you can enjoy the HiFi music and all the Alexa voice services which include Amazon Music, Spotify, Uber, iHeartRadio, NBC News, WeMo. Before that, you should have an Amazon Prime account.

Flyears speaker can automatically connect to the router last time he connected when it restarts.

## Here are some samples:

- Play today's hits on Spotify
- Turn off my lights
- Set a timer for 15 minutes
- What's the news today
- What's the traffic like right now
- Tell me a joke
- Add gelato to my shopping list

## Three favor keys—Autoplay your favor collection without phone



Tap 1 or 2 or 3 to autoplay music

## Other

AUX in

Plug into the computer or your phone also can work.

BT

Connect your phone by Bluetooth and play music.

## FCC Statement

- This device complies with Part 15 of the FCC Rules. Operation is subject to the following two conditions:
  - This device may not cause harmful interference, and
  - This device must accept any interference received, including interference that may cause undesired operation.
- Changes or modifications not expressly approved by the party responsible for compliance could void the user's authority to operate the equipment.

## NOTE:

This equipment has been tested and found to comply with the limits for a Class B digital device, pursuant to Part 15 of the FCC Rules. These limits are designed to provide reasonable protection against harmful interference in a residential installation.

This equipment generates uses and can radiate radio frequency energy and, if not installed and used in accordance with the instructions, may cause harmful interference to radio communications. However, there is no guarantee that interference will not occur in a particular installation. If this equipment does cause harmful interference to radio or television reception, which can be determined by turning the equipment off and on, the user is encouraged to try to correct the interference by one or more of

1. Reorient or relocate the receiving antenna.
2. Increase the separation between the equipment and receiver.
3. Connect the equipment into an outlet on a circuit different from that to which the receiver is connected.
4. Consult the dealer or an experienced radio/TV technician for help.

The distance between user and products should be no less than 20cm



The Spotify software is subject to third party licenses found here: <https://developer.spotify.com/esdk-third-party-licenses/>

FCC/CE certification paper and number

Design by **ShenZhen Centaurus Technology LTD.,Co**  
Made In China