

1 Product overview

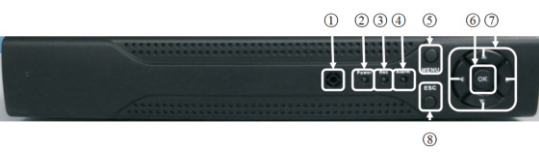
Embedded LINUX operating system is introduced to ensure system stability. With advanced H.264 high profile video compression and its unique temporal filtering algorithm, it's quite easy to achieve high-quality image along with synchronous low bit rate audio & video surveillance. Additionally, it also introduces TCP/IP and other network technology, which equips it with powerful network data transmission capacity as well as remote control capacity.

NVR6904T-F as well as NVR6904T-F/POE introduce highly advanced NVIDIA, realising plug and play. DVR can automatically identify and add IP camera when the camera is connected to the internal network port of the DVR.

NVR6904T-F/POE introduce steady and mature POE technology, DVR can charge the camera directly, which greatly optimize wiring structure, saving cable costs.

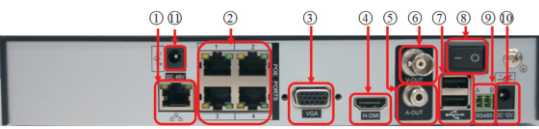
2 Panel functions

2.1 Front-end panel
NVR6904T-F & NVR6904T-F/POE front-end panel

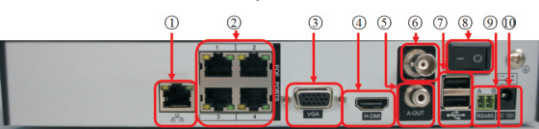


NO.	Function	NO.	Function	NO.	Function
1	remote receiver	2	power indicator	3	Record indicator
4	alarm indicator	5	menu	6	OK
7	direction key	8	cancel/return		

2.2 Real panel
1. NVR6904T-F/POE real panel interface



2. NVR6904T-F real panel interface



NO.	Function	NO.	Function	NO.	Function	NO.	Function
1	network interface	2	internal network interface	3	VGA interface	4	HDMI interface
5	audio output	6	BNC output	7	USB	8	power switch
9	RS485 interface	10	DC12V	11	DC48V		

Note:
① Network interface, connect to switch;
② Network interface connect to IP camera.
NVR6904T-F/POE support POE power supply, compatible with POE-conformed IP camera.

3 Boot up & login

3.1 HDD installation (Skip this when you don't want to store):

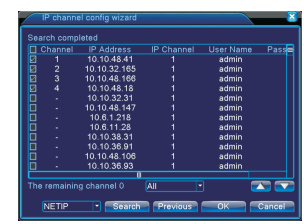
First disassemble the shell, fix the HDD to chassis, connect the data line and power

line, then install the shell and fasten the screws.

Note: When DVR is enabled, go to **main menu** > **management tool** > **storage management** to check the HDD state quo. Check it when HDD can't be recognized or there is identification error.

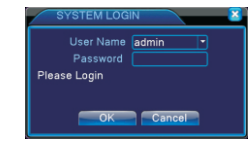
Boot:
Plug the power, open the rear panel power switch, power turns on, video recorder starts.
Note: Power supply demands: 220V±10%/50Hz.

3.2 Boot up guide
After boot up, you can add monitoring devices to the DVR quickly with bootup guide. Go to **menu shortcuts** > **boot guide** > **next**, the device starts search automatically and monitoring devices within Local area network will show up, as follows:



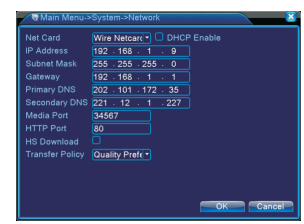
channel: Reverse means chosen, monitoring devices added to the corresponding channel.
unchosen channels: Remaining channels.
up/down: To modify the added channel order
search: Search for monitoring devices within LAN manually.
previous: Go back to the previous operation
finish: Adding is completed, return to preview interface, connect to preview automatically.
3.3 System login

Login before operations and configurations. When the NVR boots up, the user must login and the system provides the corresponding functions with the user privilege. The names are admin, guest and default. No password is needed. For your system security, please modify your password after first login. The login interface is as follows:



4 Network Setting

Go to **Main Menu** > **System Settings** > **Network Settings**.
IP address: default is 192.168.1.9;
Subnet Mask: default is 255.255.255.0;
Default Gateway: default is 192.168.1.1.



Recorder IP address should share with the router when you need to connect the recorder to network, which also should confirm to the IP and can't conflict with other IP address. Or go to **main menu** > **system settings** > **network settings**, select "auto obtain IP address" (Router should enable DHCP).

5 Channel management and POE

5.1 Channel auto add
IP camera connects directly to the internal network port of the DVR, which can be added to related channels. When connected, internal

network port takes priority,IP camera searched can't be connected successfully;when not connected,IP camera can be connected.Both methods can work properly uder multiple connections.
Note: Config name for IP camera is POEDEVICE.



5. 2 POE (NVR6904T-F/POE)
Conform to IEEE 802.3af, max.power 13W, able to charge the IP camera via Network cable,which greatly optimize wiring structure,saving cable costs.
Note:1.This function is available only when the IP camera is POE-conformed.
2.Use standard network cable please.

6 Record Configuration

Steps:
1.Charge the device,system will remind you to format the disk for first use,please format it .
2.You can enter [Main Menu]> [Record> [Record Conf] to set.
Note:There is at least one read-write HDD for nomal record.



Picture Record Conf
【 Channel】 Choose the corresponding channel number. Choose the all option to set the entire channels.
【 Length】 Set the time length of each video

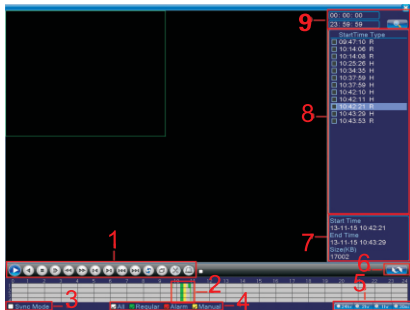
file. 60 minutes is default value.
【Record Control】 Set video state: schedule, manual or stop.
【 Period】 Set the time section of common recording, The recording will start only among the set range.
【 Record type】 Set recording type: regular, detection.

7 Playback

There are two ways for you to play the video files in the HDD
In the desktop shortcut menu
2.Main Menu>Record>playback
Note:The HDD which saves the video files must be set as read-write or read-only state.

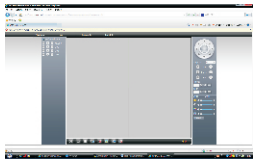
1.Playback control	2.Time display	3.Synchronous	4.Video type
5.Time schedule options	6.search by time/switch mode	7.File Attributes	8.Listed files
9.search by time			

Double-click the file name to playback the video.



8 LAN Access

When connected to the network,login NVR to start long-distance monitoring with brower on PC.
Step 1: Connect the device. Open web browser, enter IP address, take 192.168.1.9 as an example, input http: //192.168.1.9 to connect.
Step 2: Login.Enter user name and password.(default user name is admin, no password). Change the administrator password timely after login.Login success interface is as follows:

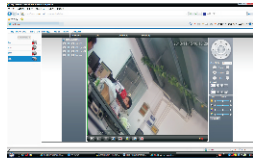


Note: Plug-ins need to be installed if you login via IE browser.IE is default to intercept plugin. Please set IE security level.Go to<internet options>--<security>--< Customerized Level>--<ActiveX >,enable them all.Or go to our official website to download and install plug-ins(<http://www.xmeye.net>); Or install IE plug-in _V1.1.0.78.exe via CD.

9 Public network access device (Cloud operation)

Cloud technology realises one step on the Internet, which greatly facilitates the customers in public network monitoring. For first use, please start here.If not ,just skip.
(1) Cloud service website login.
<http://www.xmeye.net/>

(3) Click login to enter cloud service interface, as follows:

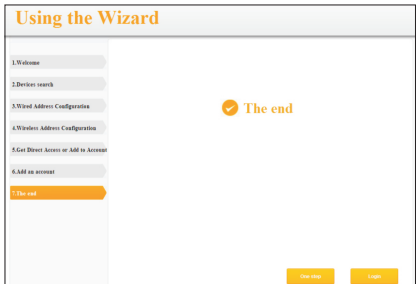


(4)After successful configuration, wherever and whenever you are, as long as you can surf the Internet ,you can get access to the device. PC monitoring:Login <http://www.xmeye.net>;Login with user name and password(user name:guest password:123).
(5) Device list is on the left,click the device the preview.
(6) Mobile Access
Network environment:wifi,3G
Mobile system:Android, Apple
Software Name:VmEyeCloud
Software Download:Google Market,app store

10 PRODUCT WARRANTY CARD

Product Name		Model	
Purchase Date		Distributor	
Purchase Place			
Customer Name		Occupation	
Tel		Post Code	
Company			
Address			

(2) Install step by step according to the guides.



FCC Statement

This equipment has been tested and found to comply with the limits for a Class B digital device, pursuant to Part 15 of the FCC Rules. These limits are designed to provide reasonable protection against harmful interference in a residential installation. This equipment generates uses and can radiate radio frequency energy and, if not installed and used in accordance with the instructions, may cause harmful interference to radio communications. However, there is no guarantee that interference will not occur in a particular installation. If this equipment does cause harmful interference to radio or television reception, which can be determined by turning the equipment off and on, the user is encouraged to try to correct the interference by one or more of the following measures:

- Reorient or relocate the receiving antenna.
- Increase the separation between the equipment and receiver.
- Connect the equipment into an outlet on a circuit different from that to which the receiver is connected.
- Consult the dealer or an experienced radio/TV technician for help.

This device complies with part 15 of the FCC Rules. Operation is subject to the following two conditions: (1) This device may not cause harmful interference, and (2) this device must accept any interference received, including interference that may cause undesired operation.

Changes or modifications not expressly approved by the party responsible for compliance could void the user's authority to operate the equipment.

This equipment complies with FCC radiation exposure limits set forth for an uncontrolled environment. This equipment should be installed and operated with minimum distance 20cm between the radiator & your body.