

# **Tablet PC**

## **TVE8901C**

**Techvision Intelligent Technology Inc.**

### **Introduction**

Thank you for your choosing the new Tablet PC.

This guide serves to enable users to get to know and familiar with our product as soon as possible.

Here we have made a brief introduction to the key layout and definitions in figures and words.

## Interface and Buttons layout




- |                               |                               |
|-------------------------------|-------------------------------|
| <b>1</b> Headphone socket     | <b>8</b> microSD card slot    |
| <b>2</b> Front camera         | <b>9</b> Micro USB connection |
| <b>3</b> Windows Home button  |                               |
| <b>4</b> On/Off Switch        | <b>10</b> HDMI connection     |
| <b>5</b> Volume up + button   | <b>11</b> USB connection      |
| <b>6</b> Volume down - button | <b>12</b> Rear Camera         |
| <b>7</b> SIM card slot        | <b>13</b> Speaker             |

## **Contents**

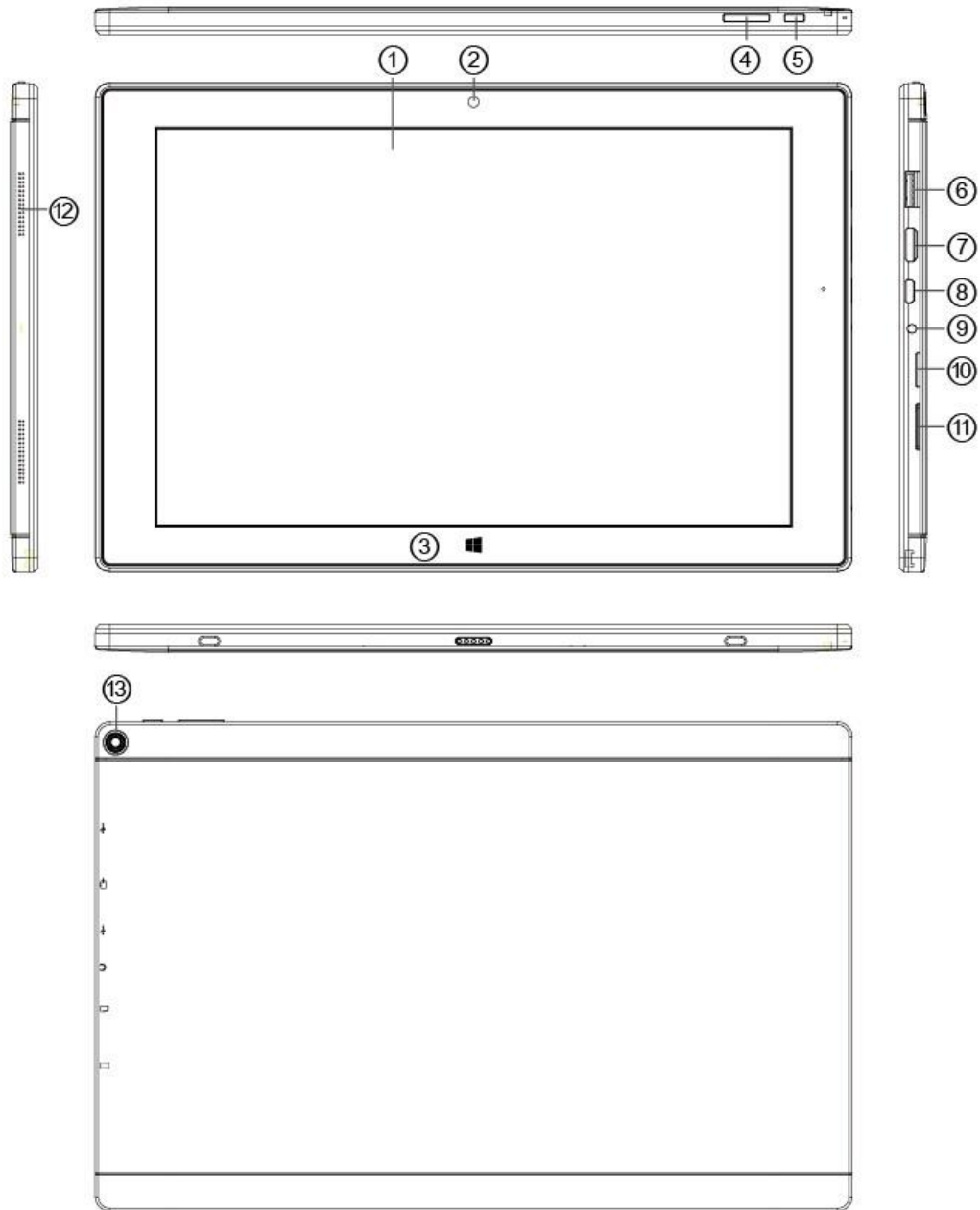
I . Precautions before Use	05
II . Key Layout and Definitions	06
III . Introduction to Desktop	07
1. Microsoft account brings many benefits	07
2. The Start menu and the Action Center	09
3. OneDrive extends your local storage	10
4. Windows Store makes getting apps easier	11
5. Restore Windows	12
6. Dormancy, Restart, and Power off	13
IV . About	15

## I . Precautions before Use

- 1.This production is suitable for use in non-tropic areas below 2,000 meters, and the mark  in the nameplate indicates the product is suitable for use in non-tropic areas.
2. Prevent the Tablet PC from falling to the ground or being strongly impacted otherwise.
3. Do not use it in the long term in any environment where the air is too cold, too hot (<35°C), too humid or with too much dust. Do not expose the Tablet PC to sunlight.
4. Avoid using it in the strong magnetic and strong static environment as much as possible.
5. Once any water or other liquid splashes onto the Tablet PC, close it immediately and do not use it until it dries out.
6. Do not clean the Tablet PC with any detergent containing chemical element or other liquid to avoid causing damage due to corrosion and becoming damp. If cleaning is really necessary, clean it with dry soft cloth tissue paper.
7. Our company shall not bear any and all responsibilities for loss or deletion of material inside the machine caused due to abnormal software and hardware operation, maintenance or any other accident.
8. Please back up your important material at any time to avoid loss.
9. Please do not disassemble the Tablet PC by yourself;otherwise you will lose the right to warranty.
10. Quick Use Guide and the relevant software shall be updated at any time. For updated software version, visit [www.techvision.com.cn](http://www.techvision.com.cn)for downloading by yourself, and no notice shall be given otherwise. If any anything is found to be inconsistent with the Quick Use Guide, the material object shall prevail.
12. Replacement with incorrect type batteries may cause explosion. Make sure to use original batteries.

## II .Key Layout and Definitions

All view ID:



1. Touch screen: Display application software interface and interact with application software.
2. Windows key: Press this button to return to the Start screen.
3. Sound-/sound+: Lower/raise volume
4. Power button: Press it down to start or close the touch screen panel. You can also let the computer to enter dormancy through this button or wake from the dormancy mode.

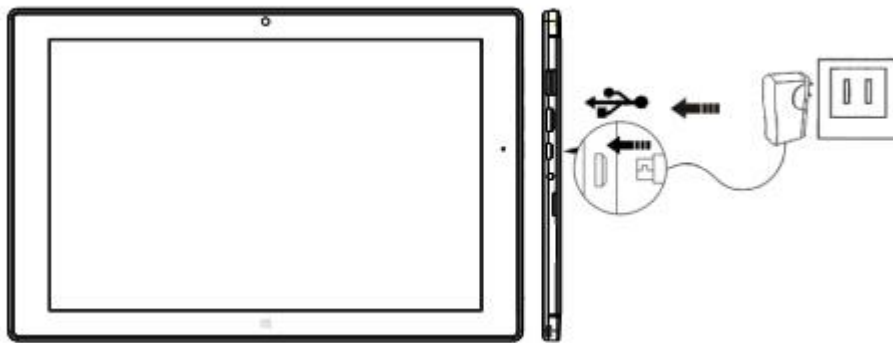
5. USB 2.0 Interface: You can read the data through USB.
6. Mini HDMI Interface: High-Definition Multimedia Interface
7. Micro USB Interface: You can read the data through USB.
8. Socket for earphone and microphone: This socket can transmit the audio signals of Tablet PC to loudspeaker or earphone.
9. Micro SD card slot: The built-in storage card reader slot supports MicroSD and MicroSDHC format.
10. Loudspeaker: The built-in loudspeaker enables you to hear the sound without having to linking additional device.

## Charging your tablet

A rechargeable battery is used to power your tablet. Charge the battery using the USB cable (power cord) and the charger (power outlet adapter) included with your tablet. Make sure to fully charge the battery before using your tablet for the first time.

**WARNING!** If the touchscreen won't function while the tablet's in the process of charging, this may be due to an unstable power supply. If this occurs, disconnect the USB cable from the tablet or unplug the charger from the power outlet.

Connect the USB cable to the travel adapter and insert the other end of the USB cable into the USB/Charging port.



## III. Introduction to Desktop

### 1. Microsoft account brings many benefits

What is it

It is a pair of user name and associating password that you use to sign into Microsoft software and services. If you use Microsoft services like OneDrive, Outlook.com, Xbox Live, Office 365, and Skype, you might already have one. If you don't have one, be assured that creating one is easy and free.

### **The benefits**

There are two main benefits of using a Microsoft account:

- Sign in only once. If you use a Microsoft account to sign into Windows 10, you don't need to sign in again to use OneDrive, Skype, Outlook.com, and other Microsoft services.
- You're connected to all your devices. If you use your Microsoft account to sign into multiple Windows-based devices, all the personalized settings will go with you.

### **Create a Microsoft account**

If you don't have a Microsoft account, you can create one. The user name for the Microsoft account must be a valid e-mail address. To create a Microsoft, go to Microsoft's sign-up page at [Microsoft.com/account](https://Microsoft.com/account).

Either way, you'll be directed to Microsoft's sign-up page for a Microsoft account. On the page, you're required to enter your e-mail address as the user name and set a password. You also need to fill in some personal information. Before the account is created, you need to check your inbox for a message from the Microsoft account team. Follow the instructions in the message to finish setting up your account. If you don't have an e-mail address, click **get a new email address**. This way, you will get a Microsoft account and a Microsoft-hosted inbox at the same time.

**Note:** The rationale for using an e-mail address as the user name is that it ensures each Microsoft account is unique.

### **Switch to a Microsoft account**

If you sign in with a local account, you can choose to switch to a Microsoft account anytime.

Step 1. Click **Start** → **Apps** → **Settings** → **Accounts**.

Step 2. Click **Sign in with a Microsoft account**.

**Note:** Internet connection is required the first time you sign into a device with a Microsoft account.

### **Add other user accounts**

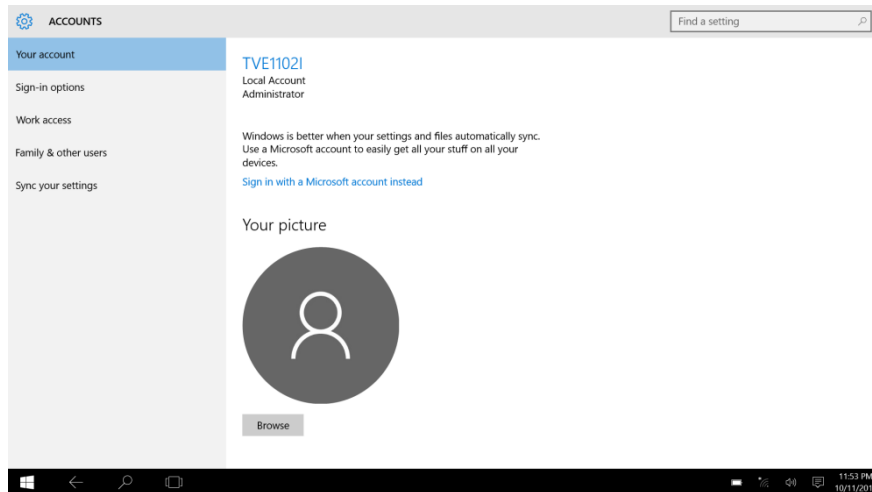
For security concerns, you may need to create a Standard User account for use; or if someone else needs to use your computer, you can add a user account for that person. The added user account can be a Microsoft account or a local account.

**Note:** If you want to add other user accounts, your account type must be Administrator.

Step 1. Click **Start** → **All apps** → **Settings** → **Accounts**.

Step 2. Click **Family & other users** then select **Add someone else to this PC**.

Step 3. From here, you can add a Microsoft account or a local account to your computer.



### Add a Microsoft account

If the person who wants to use your computer has a Microsoft account, you can add his or her Microsoft account to your computer.

**Note:** To add a Microsoft account to your computer, your computer must be connected to the Internet.

Step 1. Complete the first two steps listed in “Add other user accounts” on page 4. If your computer is connected to the Internet, you’ll be prompted to enter the user name (an e-mail address) of the Microsoft account you want to add to your computer.

Step 2. Type the email address and click **Next**. The email address will be sent to Microsoft for verification. This might take several minutes.

Step 3. Click **Finish** to complete adding the Microsoft account. The person should now be able to sign into your computer with his or her Microsoft account.

**Note:** If the email address you entered is not an existing Microsoft account, you’ll be prompted to create a Microsoft account using the email address.

### Add a local account

If your computer is not connected to the Internet, you can add a local account for the person who wants to use your computer.

Step 1. Complete the first two steps listed in “Add other user accounts”.

Step 2. Create a user name and password for the account.

Step 3. Click **Finish** to complete adding the account.

### Change account type

By default, the user account added is a Standard User account. If you’re the Administrator, you can change a Standard User account to Administrator.

Step 1. Click **Start** → **All apps** → **Settings** → **Accounts**.

Step 2. Click **Family & other users**.

Step 3. Under **Other users**, click the user name of the account you want to change then click **Change account type**.

Step 4. Change the account type in the pull-down menu.



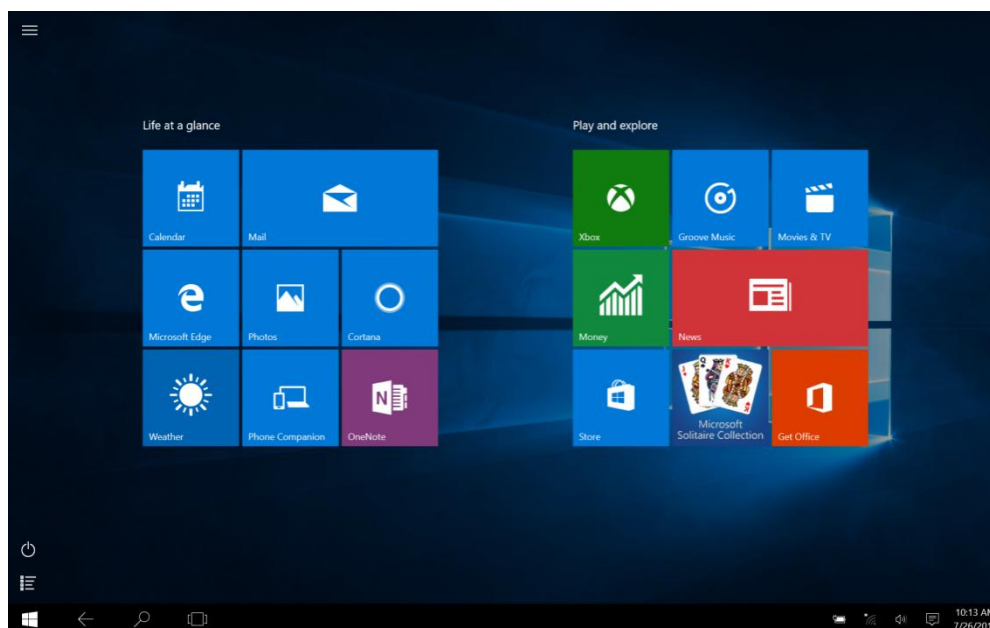
**Important:** Be extremely careful when granting administrator permission. An Administrator account can change security settings, delete important system files, and make changes that may affect others.

## 2. The Start menu and the Action Center

There are two places worth mentioning about the main user interface of Windows 10. One is the Start menu in the lower left corner and the other is the Action Center in the lower-right corner.

### The return of the Start menu

If you click the Start button in the lower-left corner, you'll notice that the Start menu is back with Windows 10. The Start menu not only brings back convenience, but also it is more powerful.



### The power button

The power button is in the Start menu. Click it and you can choose to shut down or restart the computer, or put the computer into sleep mode.

### Locate apps

Apps that you use frequently will be displayed under **Most used** in the Start menu. If you cannot find an app there, click **All apps** and locate it through the alphabetically ordered apps list.

### Pin apps to Start or the taskbar

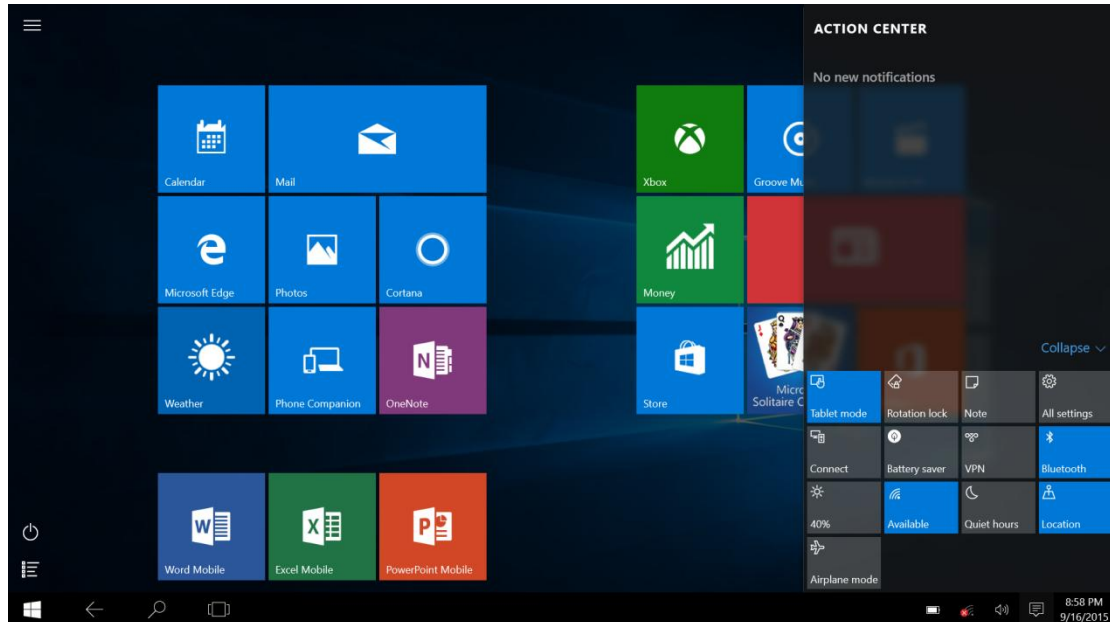
If you use an app frequently, you can pin it to Start or to the taskbar.

Step 1. Locate the app under **Most used** or **All apps**.

Step 2. Right-click on the app name then select **Pin to Start** or **Pin to taskbar**.

## The Action Center

On the far right of the taskbar is the notification area. Click the Action Center icon in the notification area and the Action Center is displayed.



From the Action Center, you may examine important notifications from Windows and your apps. More conveniently, you can change common settings quickly.

### Enable Tablet mode

Step 1. Click the Action Center icon in the notification area.

Step 2. Click **Tablet mode**.

### Enable airplane mode

When airplane mode is enabled, all radio from your computer is turned off.

Step 1. Click the Action Center icon in the notification area.

Step 2. Click **Airplane mode**.

## 3. OneDrive extends your local storage

### What is it

OneDrive refers to the online storage provided to you by Microsoft. By creating a Microsoft account, you get a portion of free online storage at the same time.

**Note:** Currently, you get 15GB of free online storage. You may purchase additional storage space if you need it.

### Access your OneDrive through a Web browser

If you signed into Windows 10 using a local account, you can access your OneDrive through a

Web browser.

Step 1. Click Microsoft Edge on the taskbar.

Step 2. Type <https://onedrive.com/> and press Enter.

Step 3. Click **Sign in** to sign in with your account.

### Local OneDrive folder

By default, a local folder has been created for syncing files with your OneDrive. It is called the OneDrive folder and its default location is C:\Users\[ACCOUNT\_NAME]\OneDrive.

**Note:** [ACCOUNT\_NAME] is your user name.

### Access local OneDrive folder

Step 1. Click the File Explorer icon on the taskbar.

Step 2. Click **OneDrive** on the left pane.

Files in your OneDrive folder are synced with your OneDrive, so you can work with local files when you're disconnected. They are automatically synced to OneDrive when Internet connection is available.

### Choose what to be synced

By default, all files and folders are synced between OneDrive in the cloud and the Onedrive folder on your local storage. This means your local OneDrive folder takes more and more storage overtime when files are added to your OneDrive. If you want to save local storage, explicitly specify the files and folders you want to keep in sync.

Step 1. Right-click the OneDrive icon in the notification area.

Step 2. Select **Settings** → **Choose folders**.

Step 3. Check the files and folders you want to keep in sync.

### Move local OneDrive folder

If you want to save space on your system partition, you can move the OneDrive folder to another partition.

Step 1. Click the File Explorer icon on the taskbar.

Step 2. On the left pane, right-click **OneDrive** and select **Properties**.

Step 3. Click the Location tab and select **Move**.

Step 4. Pick or create a folder on another partition and click **Select folder**.

Step 5. Click **Yes**.

### Turn off syncing

By default, your PC settings and preferences are saved as a file on OneDrive and will be synced with any computer you sign into with your Microsoft account. You can turn off syncing for all or individual settings on the computer you use.

Step 1. Click **Start** → **All apps** → **Settings** → **Accounts** → **Sync your settings**.

Step 2. Click the toggle button for Sync settings to turn off all syncing; or click the buttons under **Individual sync settings** to turn off syncing for individual settings.

## 4. Windows Store makes getting apps easier

Windows 10 comes with many built-in apps for your convenience, for example Music, Photos, and News. But of course those aren't enough. You can find tons of apps in the Windows Store. To go to Windows Store, click **Start → Store**.

### Install apps from the Store

Step 1. Search and find the app you want to download.

Step 2. Click the name of the app to open the product information page.

Step 3. If it is a free app, click **Install**; if it is a paid app, click **Buy** to purchase the app before installing it on your computer.

**Note:** You must sign in with your Microsoft account to install apps from the Windows Store.

### Install apps on another computer

All of the apps you've installed from the Windows Store are listed in the **My apps** section of the Store.

You can see which of your apps are installed on the different computers you use, and can install apps directly from there.

## 5. Restore Windows

If you feel Windows isn't performing as well as it once did, and you don't know why, you can restore Windows to its initial status.

Step 1. Click **Start → All apps → Settings → Update & security**.

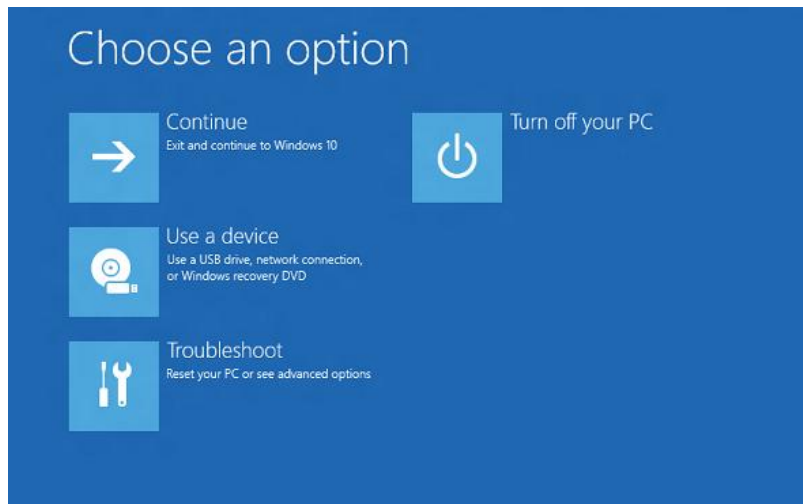
Step 2. Click **Recovery**.

Step 3. Under **Reset this PC**, click **Get started**.

Step 4. If you want to keep personal files, select **Keep my files**. If you have backed up your personal files, click **Remove everything**.

If you PC *cannot launch the windows* or you *forget your password*, you can launch **WinRE** mode to restore windows.

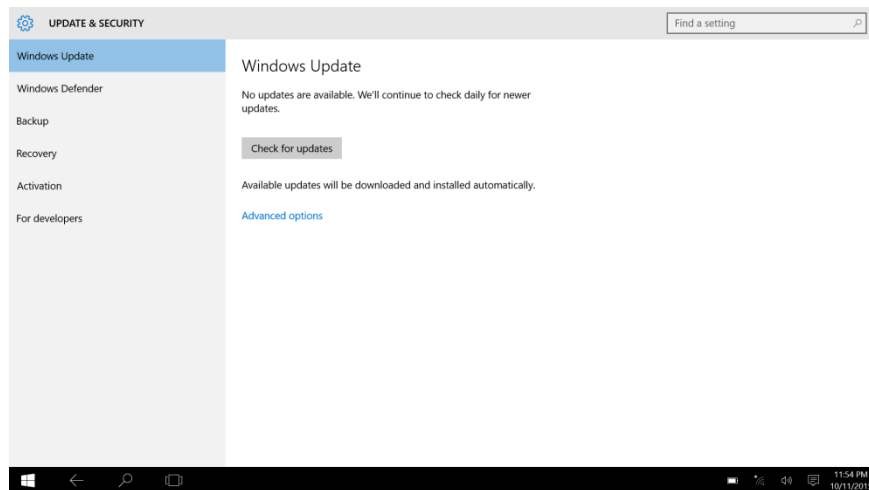
Step 1. Press **Volume up** and **Power** button for 5 seconds in power-off state, the PC launch the WinRE mode.



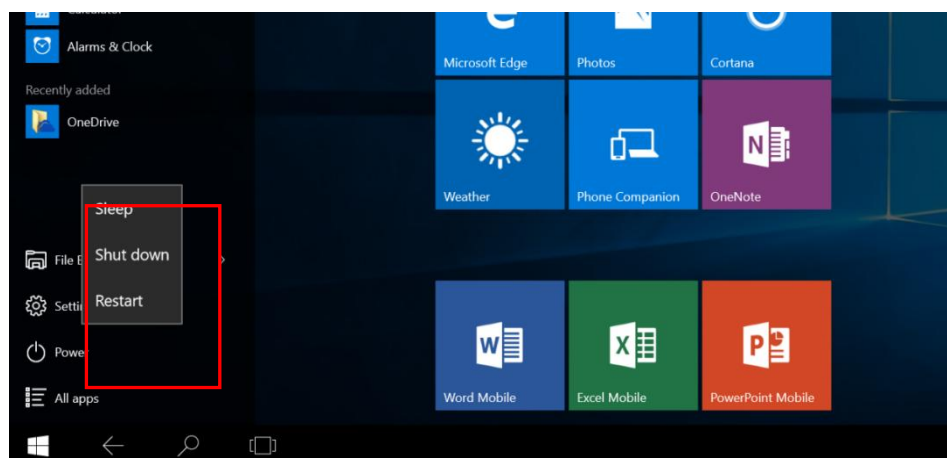
Step 2. Click **Troubleshoot**.

Step 3. Click **Reset this PC**.

Step 4. Click **keep my files** (removes apps and settings, but keeps your personal files) or **removeeverything** (removes all of your apps and settings and personal files).



## 6. Dormancy, restart and power off



## IV. About

Information about the meaning of Logo WEEE (Waste Electrical and Electronic Equipment):



The WEEE logo on the product or on its box indicates that this product must not be disposed of or dumped with your other household waste. You are liable to dispose of all your electronic or electrical waste equipment by relocating over to the specified collection point for recycling of such hazardous waste. Isolated collection and proper recovery of your electronic and electrical waste equipment at the time of disposal will allow us to help conserving natural resources. Moreover, proper recycling of the electronic and electrical waste equipment will ensure safety of human health and environment.

Dispose of electronic waste, such as batteries according to the instructions.

Caution: risk of explosion if battery is replaced by an incorrect type.

For pluggable equipment, the socket-outlet shall be installed near the equipment and shall be easily accessible.

This quick start guide and software related thereto may be changed without notice. You could download the latest software on [www.techvision.com.cn](http://www.techvision.com.cn). If this quick start guide does not exactly match the tablet you have before, please always refer to what is stated in the tablet.

Specific Absorption Rate (SAR) information:

This Tablet PC meets the government's requirements for exposure to radio waves. The guidelines are based on standards that were developed by independent scientific organizations through periodic and thorough evaluation of scientific studies. The standards include a substantial safety margin designed to assure the safety of all persons regardless of age or health. FCC RF Exposure Information and Statement The SAR limit of USA (FCC) is 1.6 W/kg averaged over one gram of tissue. Device types: T(FCC ID: 2AKP7SAT01) has also been tested against this SAR limit. The highest SAR value reported under this standard during product certification for on the body is 1.137W/kg. This device was tested for typical body-worn operations with the back of the Tablet PC kept 0mm from the body. To maintain compliance with FCC RF exposure requirements, use accessories that maintain a 0mm separation distance between the user's body and the back of the Tablet PC. The use of belt clips, holsters and similar accessories should not contain metallic components in its assembly. The use of accessories that do not satisfy these requirements may not comply with FCC RF exposure requirements, and should be avoided.

**Warning:**

This device complies with part 15 of the FCC Rules. Operation is subject to the following two conditions: (1) this device may not cause harmful interference, and (2) this device must accept any interference received, including interference that may cause undesired operation.

Any changes or modifications not expressly approved by the party responsible for compliance could void the user's authority to operate the equipment.

NOTE: This equipment has been tested and found to comply with the limits for a Class B digital device, pursuant to Part 15 of the FCC Rules. These limits are designed to provide reasonable protection against harmful interference in a residential installation. This equipment generates, uses and can radiate radio frequency energy and, if not installed and used in accordance with the instructions, may cause harmful interference to radio communications. However, there is no guarantee that interference will not occur in a particular installation.

If this equipment does cause harmful interference to radio or television reception, which can be determined by turning the equipment off and on, the user is encouraged to try to correct the interference by one or more of the following measures:

- Reorient or relocate the receiving antenna.
- Increase the separation between the equipment and receiver.
- Connect the equipment into an outlet on a circuit different from that to which the receiver is connected.
- Consult the dealer or an experienced radio/TV technician for help.

The device has been evaluated to meet general RF exposure requirement. The device can be used in portable exposure condition without restriction.

FCC ID: 2AKP7SAT01