

VisionAR

Control Unit QUICK GUIDE

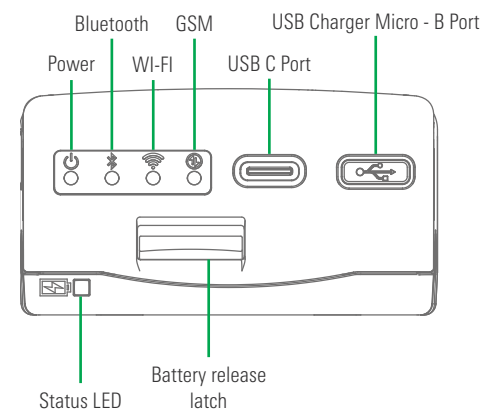
ETL-PN0006.01 Rev.1.0

What's in the box?

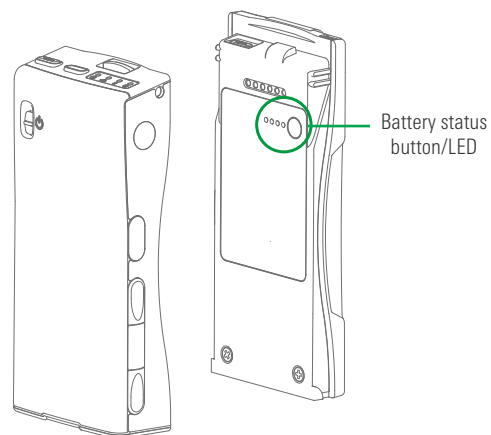
LEVEL 1:

- 1 Control Unit (CU) and battery pack
- 1 Spare battery
- 1 Charger
- 3 Plug Adapters
- 1 USB type A to type micro-B

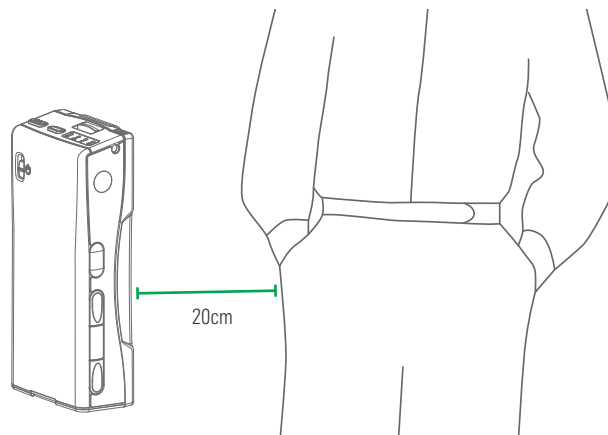
Control Unit (CU) Top View



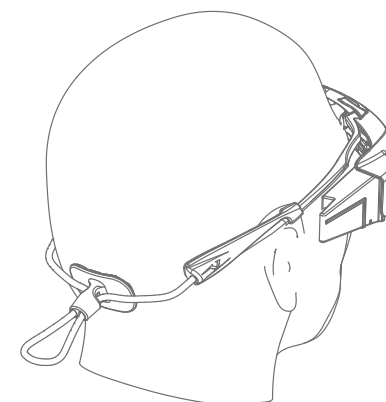
1 • Check the status of the battery



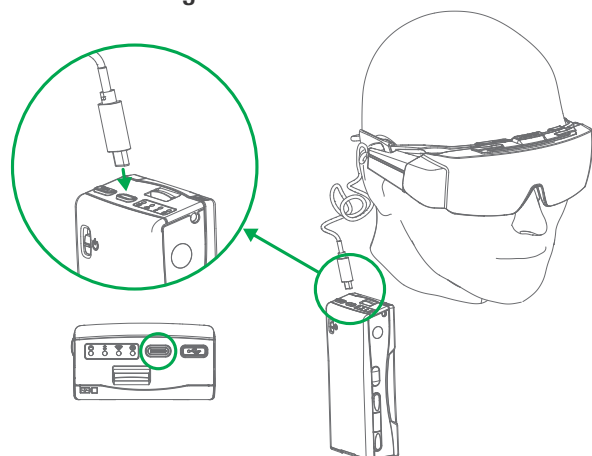
2 • Placement the Control Unit



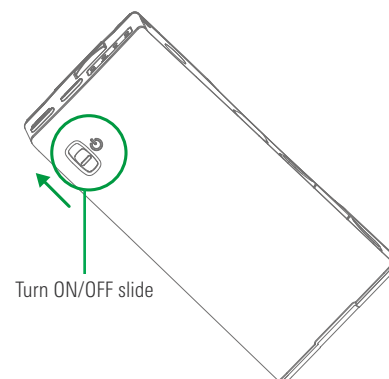
3 • Put your VisionAR on



4 • Plug the VisionAR into the CU



5 • Turn on the CU



For more information scan here!

