



PRODUCT USER MANUAL

Precautions before Use

1. This production is suitable for use in non-tropic areas below 2,000 meters, and the mark in the nameplate indicates the product is suitable for use in non-tropic areas.
2. Prevent the Tablet PC from falling to the ground or being strongly impacted otherwise.
3. Do not use it in the long term in any environment where the air is too cold, too hot (<35℃), too humid or with too much dust. Do not expose the Tablet PC to sunlight.
4. Avoid using it in the strong magnetic and strong static environment as much as possible.
5. Once any water or other liquid splashes onto the Tablet PC, close it immediately and do not use it until it dries out.
6. Do not clean the Tablet PC with any detergent containing chemical element or other liquid to avoid causing damage due to corrosion and becoming damp. If cleaning is really necessary, clean it with dry soft cloth tissue paper.
7. Our company shall not bear any and all responsibilities for loss or deletion of material inside the machine caused due to abnormal software and hardware operation, maintenance or any other accident.
8. Please back up your important material at any time to avoid loss.
9. Please do not disassemble the Tablet PC by yourself; otherwise you will lose the right to warranty.
10. This product supports the overwhelming majority of mainstream brands of 3G DONGLE network cards. The cases for 3G Dongle may be different. It is suggested that you test it to make sure it is OK before buying it.
11. Replacement with incorrect type batteries may cause explosion. Make sure to use original batteries.



SHENZHEN ALLDOCUBE TECHNOLOGY AND SCIENCE CO.,LTD
en@1cube.com



Caution:

This equipment has been tested and found to comply with the limits for a Class B digital device, pursuant to part 15 of the FCC Rules. These limits are designed to provide reasonable protection against harmful interference in a residential installation. This equipment generates uses and can radiate radio frequency energy and, if not installed and used in accordance with the instructions, may cause harmful interference to radio communications. However, there is no guarantee that interference will not occur in a particular installation. If this equipment does cause harmful interference to radio or television reception, which can be determined by turning the equipment off and on, the user is encouraged to try to correct the interference by one or more of the following measures:

- Reorient or relocate the receiving antenna.
- Increase the separation between the equipment and receiver.
- Connect the equipment into an outlet on a circuit different from that to which the receiver is connected.
- Consult the dealer or an experienced radio/TV technician for help.

This device complies with part 15 of the FCC Rules. Operation is subject to the following two conditions: (1) This device may not cause harmful interference, and (2) this device must accept any interference received, including interference that may cause undesired operation.

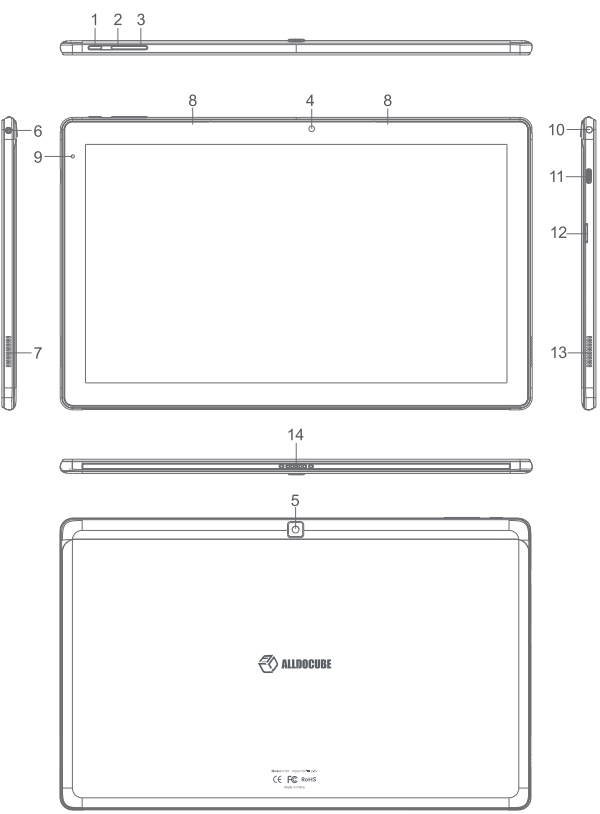
Any Changes or modifications not expressly approved by the party responsible for compliance could void the user's authority to operate the equipment.

170x95mm 250克书写纸

Thank you very much for purchasing our product ALLDOCUBE KNote. Please confirm the following items in the package:

- i1101 tablet
- User Manual

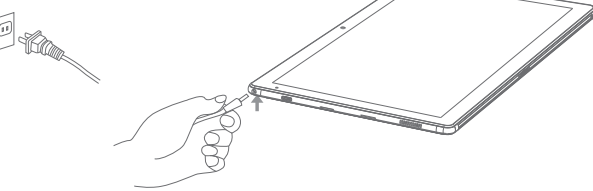
Controls & Ports



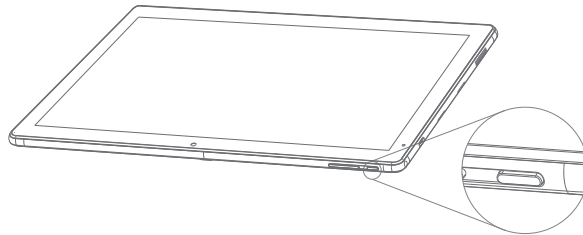
- 1| Power button
- 2| Volume down
- 3| Volume up
- 4| Front Camera
- 5| Rear Camera
- 6| 3.5mm Headphone Jack
- 7| Right speaker
- 8| MIC
- 9| Charging: red Full charged: green
- 10| DC charging port: 3.5mm 12V/2.5A
- 11| Multifunction type C port
- 12| Micro SD card slot
- 13| Left speaker
- 14| Adorption Keyboard Port

Initial Setting

First: connect the power adapter
Please connect the power adapter to activate the battery when you first use this tablet.



Second: press the power button for 3 seconds



Third: complete the system setting according to the steps in the screen.

Wireless Device information

In some cases or environments, wireless device may be limited. Please comply with the relational provision. For example, using wireless device in a flying plane will do harm to other device or service.

Battery Declaration

Do not replace or remove the battery by yourself, it may cause the damage of battery, over heat or damage to your health.
The built-in battery should be replaced by the ALLDOCUBE or the authorized service provider.
Please deal with the battery according to the regulations of local legislation.
Never: • Throw the battery into the water. • Repair or disassemble the battery
Do not try to disassemble or refill the battery, you may be in danger of battery's explosion or liquid leakage if you do like that. The batteries which were disassembled or refitted are not in warranty. The battery contains a small amount of harmful substances.

Current Safety Information

Current is existed in the battery and the cable when charging.
Please not charge or repair the product during lightning period.
You should disconnect the charging cable if you want to open the case of the product.
If the charging cable be damaged, please use the special cable bought from manufacturer or maintenance department.

Important Matter

This product conform to the specification of EMC. You must use the peripherals conform to the specification and connect them with shielded cable to reduce the interference to other device.

Working Temperature: 5℃ ~ 35℃ Storage Temperature: -15℃ ~ 45℃
Working Humidity: 5% ~ 90%

Name and content of harmful substances or elements in the product

Part	Harmful Substance or element					
	Pb	Hg	Cd	Cr(VI)	PBB	PBDE
Circuit board	X	0	0	0	0	0
Hard disk drive	X	0	0	0	0	0
Screen	X	0	0	0	0	0
Case	X	0	0	0	0	0
Battery	X	0	0	0	0	0
Keyboard	X	0	0	0	0	0
Speaker	X	0	0	0	0	0
Heat sink Module	X	0	0	0	0	0
MIC	X	0	0	0	0	0
Wi-Fi Module	X	0	0	0	0	0
AC adapter	X	0	0	0	0	0

Generally, the harmful substance or element of the tablet and its accessories will not be Leaked.
Using this product will not do harm to environment, health and property.

This table is worked out according to the regulations of SJ/T11364.
0: The content of harmful substance in this part is lower than the limits of GB/T26572.
X: The content of harmful substance in this part is higher than the limits of GB/T26572.

170x95mm 80克书写纸

“i1101” Technical data

Processor (CPU):	Intel Apollo Lake N3450 quad-core 1.10GHz
Operating system:	Windows 10
RAM:	4GB
Storage capacity:	64GB
Graphics unit (GPU):	Intel HD Graphics 500
Display size:	11.6"
Aspect ratio:	16:9
Screen resolution:	1920 x 1080 pixel
Camera:	2.0 Megapixel / 5.0 Megapixel
Interfaces:	Charging Port: 5V 2A Micro USB USB Port: Micro 5PIN USB/Micro USB3.0 Earphone Port: 3.5MM
Supported memory cards:	Up to 128GB
Dimensions (B x H x T):	289*180*8.6mm
Weight:	764 g
Battery:	7.6V 4000mAh
Battery charged via:	Micro-USB 3.0 socket
WiFi frequencies:	802.11ac/a/b/g/n(2.4GHz/5GHz)
Operating Temperature	-5° ~ 40° C

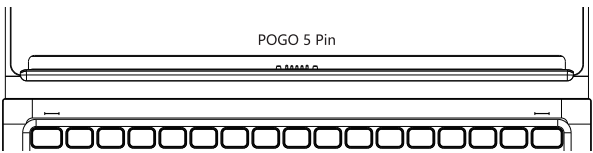
Refer to the detailed operating instructions for technical specifications on the power adapter.

The battery in this product cannot be easily replaced by users themselves.



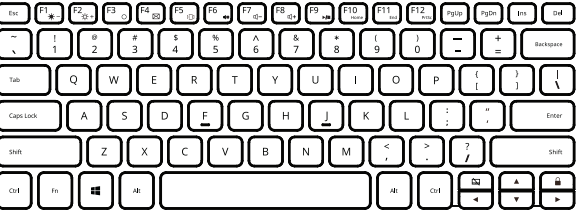
CDK10
Stylish Magnetic Keyboard

Interface



Keyboard Layout

Standard full-size QWERT keyboard
Windows shortcut keys and Media controls are available. Additional uses of the FN key can freely switch between the Media controls and Function keys (F1-F12).

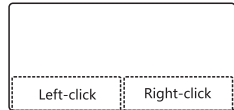


Function key introduction

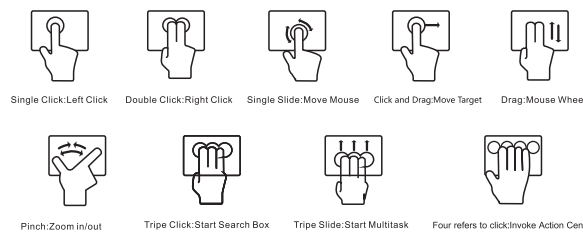
Function keys	Functions	Function keys	Functions
FN+F1	Brightness -	FN+F8	Vol+ / pause
FN+F2	Brightness +	FN+F9	Play / Home
FN+F3	Cortana	FN+F10	End
FN+F4	mailbox	FN+F11	Prtsc
FN+F5	Panel diagram	FN+F12	dormancy
FN+F6	Volume off	FN+	Lock touchpad
FN+F7	Vol-		

Touchpad

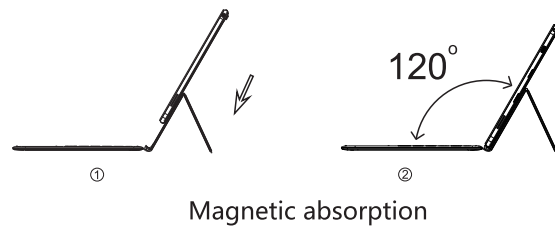
The CDK10 features a touchpad which supports multi-touch, mouse-like left & right key function and variety of gesture functions.



Touchpad Gestures



Set up your keyboard



170x95mm 80克书写纸