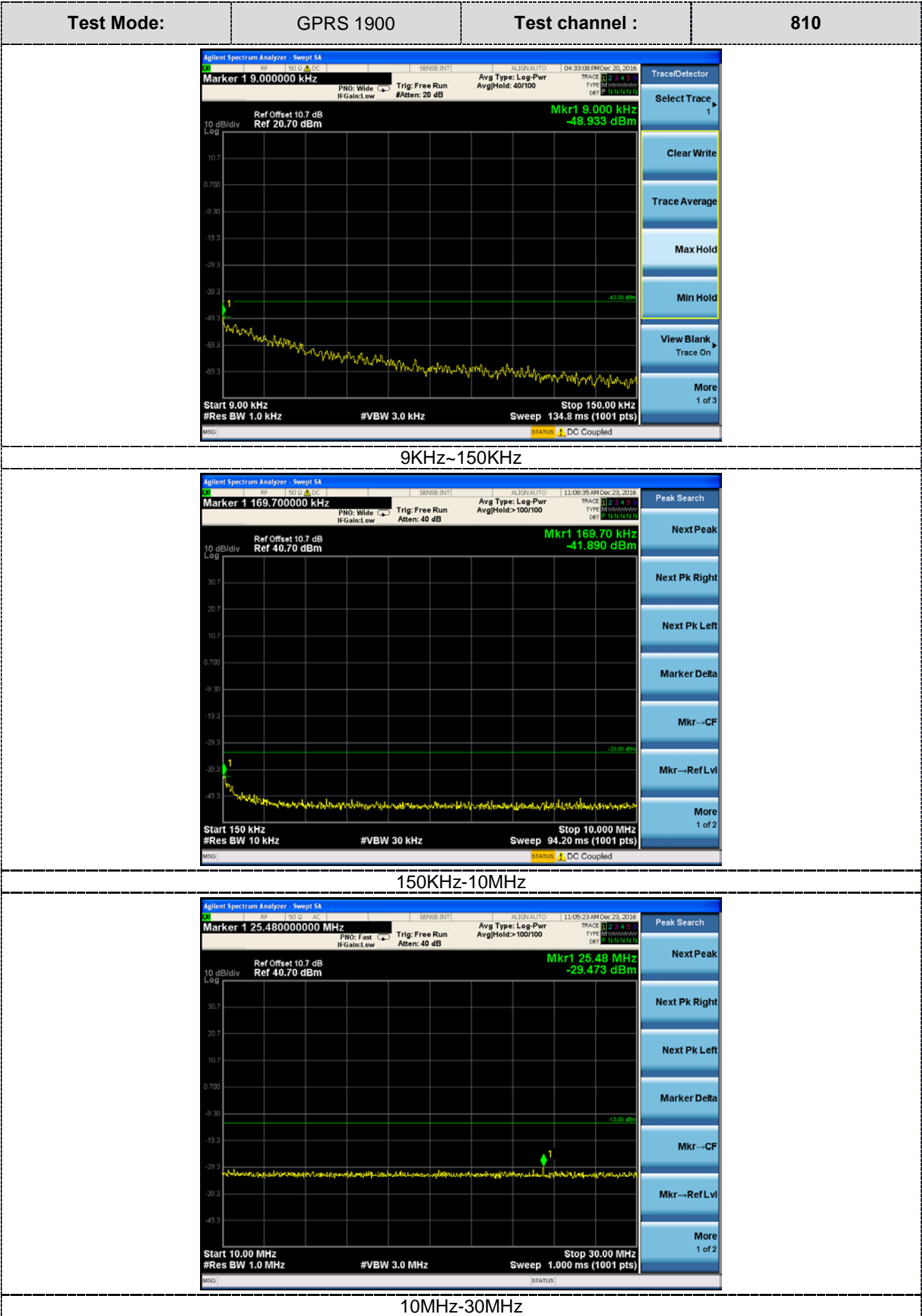


Test Mode:	GPRS 1900	Test channel :	661
<div><div><div><div><div>Agilent Spectrum Analyzer - Swept SA</div><div><div>Marker 1 2.670330000000 GHz</div><div>Trig: Free Run</div><div>Avg Type: Log-Pwr</div><div>Trig: Fast</div><div>IF Gain: Low</div><div>#Att: 40 dB</div></div><div>Ref Offset 10.7 dB</div><div>Ref 40.00 dBm</div><div>Mkr1 2.670 3 GHz</div><div>-26.404 dBm</div><div>10 dB/div</div><div>Log</div><div>Start 30 MHz</div><div>#Res BW 1.0 MHz</div><div>#VBW 3.0 MHz</div><div>Stop 3.000 GHz</div><div>Sweep 2.867 ms (1001 pts)</div><div>MDG</div><div>STATUS</div></div><div><div>Peak Search</div><div>Next Peak</div><div>Next Pk Right</div><div>Next Pk Left</div><div>Marker Delta</div><div>Mkr→CF</div><div>Mkr→Ref Lvl</div><div>More</div><div>1 of 2</div></div></div></div><div>30MHz-3GHz</div></div>			
<div><div><div><div><div>Agilent Spectrum Analyzer - Swept SA</div><div><div>Marker 1 5.814000000000 GHz</div><div>Trig: Free Run</div><div>Avg Type: Log-Pwr</div><div>Trig: Fast</div><div>IF Gain: Low</div><div>#Att: 40 dB</div></div><div>Ref Offset 10.7 dB</div><div>Ref 40.00 dBm</div><div>Mkr1 5.814 GHz</div><div>-26.026 dBm</div><div>10 dB/div</div><div>Log</div><div>Start 3.000 GHz</div><div>#Res BW 1.0 MHz</div><div>#VBW 3.0 MHz</div><div>Stop 9.000 GHz</div><div>Sweep 10.00 ms (1001 pts)</div><div>MDG</div><div>STATUS</div></div><div><div>Peak Search</div><div>Next Peak</div><div>Next Pk Right</div><div>Next Pk Left</div><div>Marker Delta</div><div>Mkr→CF</div><div>Mkr→Ref Lvl</div><div>More</div><div>1 of 2</div></div></div></div><div>3GHz-9GHz</div></div>			
<div><div><div><div><div>Agilent Spectrum Analyzer - Swept SA</div><div><div>Marker 1 19.593000000000 GHz</div><div>Trig: Free Run</div><div>Avg Type: Log-Pwr</div><div>Trig: Fast</div><div>IF Gain: Low</div><div>#Att: 40 dB</div></div><div>Ref Offset 10.7 dB</div><div>Ref 40.00 dBm</div><div>Mkr1 19.593 GHz</div><div>-21.939 dBm</div><div>10 dB/div</div><div>Log</div><div>Start 9.000 GHz</div><div>#Res BW 1.0 MHz</div><div>#VBW 3.0 MHz</div><div>Stop 20.000 GHz</div><div>Sweep 27.53 ms (1001 pts)</div><div>MDG</div><div>STATUS</div></div><div><div>Peak Search</div><div>Next Peak</div><div>Next Pk Right</div><div>Next Pk Left</div><div>Marker Delta</div><div>Mkr→CF</div><div>Mkr→Ref Lvl</div><div>More</div><div>1 of 2</div></div></div></div><div>9GHz-20GHz</div></div>			



Test Mode:	GPRS 1900	Test channel :	810								
<div><div><div><div><div>Agilent Spectrum Analyzer - Swept SA</div><div><div>Marker 1 2.750520000000 GHz</div><div>RF: Fast IF Gain: Low Trig: Free Run Avg Type: Log-Pwr Avg Hold: 100/100</div><div>Ref Offset 10.7 dB Ref 40.00 dBm</div><div><div>10 dB/div</div><div>Log</div><div><div><div>30.0</div><div>20.0</div><div>10.0</div><div>0.00</div><div>-10.0</div><div>-20.0</div><div>-30.0</div><div>-40.0</div><div>-50.0</div></div><div><div>Mkr1 2.750 5 GHz</div><div>-25.516 dBm</div></div><div><div>Start 30 MHz</div><div>#Res BW 1.0 MHz</div><div>#VBW 3.0 MHz</div><div>Stop 3.000 GHz</div><div>Sweep 2.867 ms (1001 pts)</div></div></div></div></div><div><div>Peak Search</div><div>Next Peak</div><div>Next Pk Right</div><div>Next Pk Left</div><div>Marker Delta</div><div>Mkr→CF</div><div>Mkr→Ref Lvl</div><div>More 1 of 2</div></div></div></div><div>30MHz-3GHz</div><tr><td colspan="4"><div><div><div><div><div>Agilent Spectrum Analyzer - Swept SA</div><div><div>Marker 1 5.886000000000 GHz</div><div>RF: Fast IF Gain: Low Trig: Free Run Avg Type: Log-Pwr Avg Hold: 39/100</div><div>Ref Offset 10.7 dB Ref 40.00 dBm</div><div><div>10 dB/div</div><div>Log</div><div><div><div>30.0</div><div>20.0</div><div>10.0</div><div>0.00</div><div>-10.0</div><div>-20.0</div><div>-30.0</div><div>-40.0</div><div>-50.0</div></div><div><div>Mkr1 5.886 GHz</div><div>-26.312 dBm</div></div><div><div>Start 3.000 GHz</div><div>#Res BW 1.0 MHz</div><div>#VBW 3.0 MHz</div><div>Stop 9.000 GHz</div><div>Sweep 10.00 ms (1001 pts)</div></div></div></div></div><div><div>Peak Search</div><div>Next Peak</div><div>Next Pk Right</div><div>Next Pk Left</div><div>Marker Delta</div><div>Mkr→CF</div><div>Mkr→Ref Lvl</div><div>More 1 of 2</div></div></div></div><div>3GHz-9GHz</div><tr><td colspan="4"><div><div><div><div><div>Agilent Spectrum Analyzer - Swept SA</div><div><div>Marker 1 19.780000000000 GHz</div><div>RF: Fast IF Gain: Low Trig: Free Run Avg Type: Log-Pwr Avg Hold: 27/100</div><div>Ref Offset 10.7 dB Ref 40.00 dBm</div><div><div>10 dB/div</div><div>Log</div><div><div><div>30.0</div><div>20.0</div><div>10.0</div><div>0.00</div><div>-10.0</div><div>-20.0</div><div>-30.0</div><div>-40.0</div><div>-50.0</div></div><div><div>Mkr1 19.780 GHz</div><div>-22.473 dBm</div></div><div><div>Start 9.000 GHz</div><div>#Res BW 1.0 MHz</div><div>#VBW 3.0 MHz</div><div>Stop 20.000 GHz</div><div>Sweep 27.53 ms (1001 pts)</div></div></div></div></div><div><div>Peak Search</div><div>Next Peak</div><div>Next Pk Right</div><div>Next Pk Left</div><div>Marker Delta</div><div>Mkr→CF</div><div>Mkr→Ref Lvl</div><div>More 1 of 2</div></div></div></div><div>9GHz-20GHz</div></div></div></td></tr></div></div></td></tr></div></div>				<div><div><div><div><div>Agilent Spectrum Analyzer - Swept SA</div><div><div>Marker 1 5.886000000000 GHz</div><div>RF: Fast IF Gain: Low Trig: Free Run Avg Type: Log-Pwr Avg Hold: 39/100</div><div>Ref Offset 10.7 dB Ref 40.00 dBm</div><div><div>10 dB/div</div><div>Log</div><div><div><div>30.0</div><div>20.0</div><div>10.0</div><div>0.00</div><div>-10.0</div><div>-20.0</div><div>-30.0</div><div>-40.0</div><div>-50.0</div></div><div><div>Mkr1 5.886 GHz</div><div>-26.312 dBm</div></div><div><div>Start 3.000 GHz</div><div>#Res BW 1.0 MHz</div><div>#VBW 3.0 MHz</div><div>Stop 9.000 GHz</div><div>Sweep 10.00 ms (1001 pts)</div></div></div></div></div><div><div>Peak Search</div><div>Next Peak</div><div>Next Pk Right</div><div>Next Pk Left</div><div>Marker Delta</div><div>Mkr→CF</div><div>Mkr→Ref Lvl</div><div>More 1 of 2</div></div></div></div><div>3GHz-9GHz</div><tr><td colspan="4"><div><div><div><div><div>Agilent Spectrum Analyzer - Swept SA</div><div><div>Marker 1 19.780000000000 GHz</div><div>RF: Fast IF Gain: Low Trig: Free Run Avg Type: Log-Pwr Avg Hold: 27/100</div><div>Ref Offset 10.7 dB Ref 40.00 dBm</div><div><div>10 dB/div</div><div>Log</div><div><div><div>30.0</div><div>20.0</div><div>10.0</div><div>0.00</div><div>-10.0</div><div>-20.0</div><div>-30.0</div><div>-40.0</div><div>-50.0</div></div><div><div>Mkr1 19.780 GHz</div><div>-22.473 dBm</div></div><div><div>Start 9.000 GHz</div><div>#Res BW 1.0 MHz</div><div>#VBW 3.0 MHz</div><div>Stop 20.000 GHz</div><div>Sweep 27.53 ms (1001 pts)</div></div></div></div></div><div><div>Peak Search</div><div>Next Peak</div><div>Next Pk Right</div><div>Next Pk Left</div><div>Marker Delta</div><div>Mkr→CF</div><div>Mkr→Ref Lvl</div><div>More 1 of 2</div></div></div></div><div>9GHz-20GHz</div></div></div></td></tr></div></div>				<div><div><div><div><div>Agilent Spectrum Analyzer - Swept SA</div><div><div>Marker 1 19.780000000000 GHz</div><div>RF: Fast IF Gain: Low Trig: Free Run Avg Type: Log-Pwr Avg Hold: 27/100</div><div>Ref Offset 10.7 dB Ref 40.00 dBm</div><div><div>10 dB/div</div><div>Log</div><div><div><div>30.0</div><div>20.0</div><div>10.0</div><div>0.00</div><div>-10.0</div><div>-20.0</div><div>-30.0</div><div>-40.0</div><div>-50.0</div></div><div><div>Mkr1 19.780 GHz</div><div>-22.473 dBm</div></div><div><div>Start 9.000 GHz</div><div>#Res BW 1.0 MHz</div><div>#VBW 3.0 MHz</div><div>Stop 20.000 GHz</div><div>Sweep 27.53 ms (1001 pts)</div></div></div></div></div><div><div>Peak Search</div><div>Next Peak</div><div>Next Pk Right</div><div>Next Pk Left</div><div>Marker Delta</div><div>Mkr→CF</div><div>Mkr→Ref Lvl</div><div>More 1 of 2</div></div></div></div><div>9GHz-20GHz</div></div></div>			
<div><div><div><div><div>Agilent Spectrum Analyzer - Swept SA</div><div><div>Marker 1 5.886000000000 GHz</div><div>RF: Fast IF Gain: Low Trig: Free Run Avg Type: Log-Pwr Avg Hold: 39/100</div><div>Ref Offset 10.7 dB Ref 40.00 dBm</div><div><div>10 dB/div</div><div>Log</div><div><div><div>30.0</div><div>20.0</div><div>10.0</div><div>0.00</div><div>-10.0</div><div>-20.0</div><div>-30.0</div><div>-40.0</div><div>-50.0</div></div><div><div>Mkr1 5.886 GHz</div><div>-26.312 dBm</div></div><div><div>Start 3.000 GHz</div><div>#Res BW 1.0 MHz</div><div>#VBW 3.0 MHz</div><div>Stop 9.000 GHz</div><div>Sweep 10.00 ms (1001 pts)</div></div></div></div></div><div><div>Peak Search</div><div>Next Peak</div><div>Next Pk Right</div><div>Next Pk Left</div><div>Marker Delta</div><div>Mkr→CF</div><div>Mkr→Ref Lvl</div><div>More 1 of 2</div></div></div></div><div>3GHz-9GHz</div><tr><td colspan="4"><div><div><div><div><div>Agilent Spectrum Analyzer - Swept SA</div><div><div>Marker 1 19.780000000000 GHz</div><div>RF: Fast IF Gain: Low Trig: Free Run Avg Type: Log-Pwr Avg Hold: 27/100</div><div>Ref Offset 10.7 dB Ref 40.00 dBm</div><div><div>10 dB/div</div><div>Log</div><div><div><div>30.0</div><div>20.0</div><div>10.0</div><div>0.00</div><div>-10.0</div><div>-20.0</div><div>-30.0</div><div>-40.0</div><div>-50.0</div></div><div><div>Mkr1 19.780 GHz</div><div>-22.473 dBm</div></div><div><div>Start 9.000 GHz</div><div>#Res BW 1.0 MHz</div><div>#VBW 3.0 MHz</div><div>Stop 20.000 GHz</div><div>Sweep 27.53 ms (1001 pts)</div></div></div></div></div><div><div>Peak Search</div><div>Next Peak</div><div>Next Pk Right</div><div>Next Pk Left</div><div>Marker Delta</div><div>Mkr→CF</div><div>Mkr→Ref Lvl</div><div>More 1 of 2</div></div></div></div><div>9GHz-20GHz</div></div></div></td></tr></div></div>				<div><div><div><div><div>Agilent Spectrum Analyzer - Swept SA</div><div><div>Marker 1 19.780000000000 GHz</div><div>RF: Fast IF Gain: Low Trig: Free Run Avg Type: Log-Pwr Avg Hold: 27/100</div><div>Ref Offset 10.7 dB Ref 40.00 dBm</div><div><div>10 dB/div</div><div>Log</div><div><div><div>30.0</div><div>20.0</div><div>10.0</div><div>0.00</div><div>-10.0</div><div>-20.0</div><div>-30.0</div><div>-40.0</div><div>-50.0</div></div><div><div>Mkr1 19.780 GHz</div><div>-22.473 dBm</div></div><div><div>Start 9.000 GHz</div><div>#Res BW 1.0 MHz</div><div>#VBW 3.0 MHz</div><div>Stop 20.000 GHz</div><div>Sweep 27.53 ms (1001 pts)</div></div></div></div></div><div><div>Peak Search</div><div>Next Peak</div><div>Next Pk Right</div><div>Next Pk Left</div><div>Marker Delta</div><div>Mkr→CF</div><div>Mkr→Ref Lvl</div><div>More 1 of 2</div></div></div></div><div>9GHz-20GHz</div></div></div>							
<div><div><div><div><div>Agilent Spectrum Analyzer - Swept SA</div><div><div>Marker 1 19.780000000000 GHz</div><div>RF: Fast IF Gain: Low Trig: Free Run Avg Type: Log-Pwr Avg Hold: 27/100</div><div>Ref Offset 10.7 dB Ref 40.00 dBm</div><div><div>10 dB/div</div><div>Log</div><div><div><div>30.0</div><div>20.0</div><div>10.0</div><div>0.00</div><div>-10.0</div><div>-20.0</div><div>-30.0</div><div>-40.0</div><div>-50.0</div></div><div><div>Mkr1 19.780 GHz</div><div>-22.473 dBm</div></div><div><div>Start 9.000 GHz</div><div>#Res BW 1.0 MHz</div><div>#VBW 3.0 MHz</div><div>Stop 20.000 GHz</div><div>Sweep 27.53 ms (1001 pts)</div></div></div></div></div><div><div>Peak Search</div><div>Next Peak</div><div>Next Pk Right</div><div>Next Pk Left</div><div>Marker Delta</div><div>Mkr→CF</div><div>Mkr→Ref Lvl</div><div>More 1 of 2</div></div></div></div><div>9GHz-20GHz</div></div></div>											

4.6 Frequency Stability Test

TEST APPLICABLE

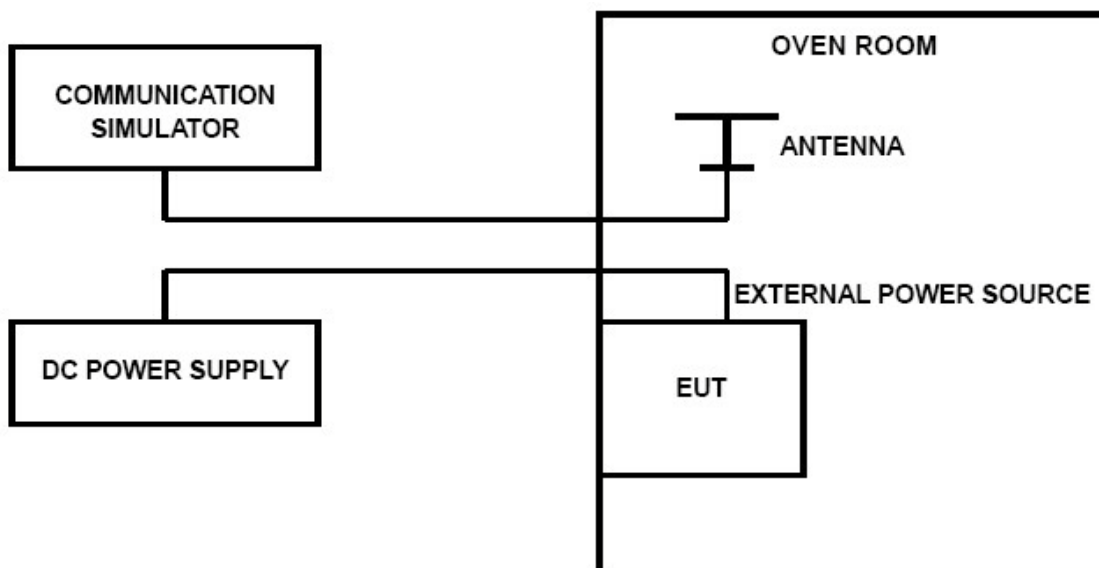
1. According to FCC Part 2 Section 2.1055 (a)(1), the frequency stability shall be measured with variation of ambient temperature from -30°C to +50°C centigrade.
2. According to FCC Part 2 Section 2.1055 (E) (2), for battery powered equipment, the frequency stability shall be measured with reducing primary supply voltage to the battery operating end point, which is specified by the manufacture.
3. Vary primary supply voltage from 85 to 115 percent of the nominal value for other than hand carried voltage equipment and the end voltage point was 3.4V.

TEST PROCEDURE

In order to measure the carrier frequency under the condition of AFC lock, it is necessary to make measurements with the EUT in a "call mode". This is accomplished with the use of R&S CMW500 DIGITAL RADIO COMMUNICATION TESTER.

1. Measure the carrier frequency at room temperature;
2. Subject the EUT to overnight soak at -30°C;
3. With the EUT, powered via nominal voltage, connected to the CMW500 and in a simulated call on middle channel of PCS 1900 and GSM850, measure the carrier frequency. These measurements should be made within 2 minutes of Powering up the EUT, to prevent significant self-warming;
4. Repeat the above measurements at 10°C increments from -30°C to +50°C. Allow at least 0.5 hours at each temperature, unpowered, before making measurements;
5. Remeasure carrier frequency at room temperature with nominal voltage. Vary supply voltage from minimum voltage to maximum voltage, in 0.1Volt increments remeasuring carrier frequency at each voltage. Pause at nominal voltage for 0.5 hours unpowered, to allow any self-heating to stabilize, before continuing;
6. Subject the EUT to overnight soak at +50°C;
7. With the EUT, powered via nominal voltage, connected to the CMW500 and in a simulated call on the centre channel, measure the carrier frequency. These measurements should be made within 2 minutes of Powering up the EUT, to prevent significant self-warming;
8. Repeat the above measurements at 10°C increments from +50°C to -30°C. Allow at least 0.5 hours at each temperature, unpowered, before making measurements;
9. At all temperature levels hold the temperature to +/- 0.5°C during the measurement procedure;

TEST CONFIGURATION



TEST LIMITS***For Hand carried battery powered equipment***

According to the JTC standard the frequency stability of the carrier shall be accurate to within 0.1 ppm of the received frequency from the base station. This accuracy is sufficient to meet Sec. 24.235, Frequency Stability. The frequency stability shall be sufficient to ensure that the fundamental emission stays within the authorized frequency block. As this transceiver is considered "Hand carried, battery powered equipment" Section 2.1055(d)(2) applies. This requires that the lower voltage for frequency stability testing be specified by the manufacturer. This transceiver is specified to operate with an input voltage of between 10.8VDC and 13.2VDC, with a nominal voltage of 12 DC. Operation above or below these voltage limits is prohibited by transceiver software in order to prevent improper operation as well as to protect components from overstress. These voltages represent a tolerance of -10 % and +12.5 %. For the purposes of measuring frequency stability these voltage limits are to be used.

For equipment powered by primary supply voltage

According to the JTC standard the frequency stability of the carrier shall be accurate to within 0.1 ppm of the received frequency from the base station. This accuracy is sufficient to meet Sec. 24.235, Frequency Stability. The frequency stability shall be sufficient to ensure that the fundamental emission stays within the authorized frequency block. For this EUT section 2.1055(d)(1) applies. This requires varying primary supply voltage from 85 to 115 percent of the nominal value for other than hand carried battery equipment.

TEST RESULTS

GPRS 850 Middle channel=190 channel=836.6MHz					
DC Power	Temperature (°C)	Frequency error(Hz)	Frequency error(ppm)	Limit (ppm)	Verdict
3.4	25	26	0.0311	2.50	PASS
3.8	25	21	0.0251	2.50	PASS
4.2	25	23	0.0275	2.50	PASS
3.8	-30	19	0.0227	2.50	PASS
3.8	-20	27	0.0323	2.50	PASS
3.8	-10	23	0.0275	2.50	PASS
3.8	0	22	0.0263	2.50	PASS
3.8	10	18	0.0215	2.50	PASS
3.8	20	20	0.0239	2.50	PASS
3.8	30	18	0.0215	2.50	PASS
3.8	40	17	0.0203	2.50	PASS
3.8	50	21	0.0251	2.50	PASS

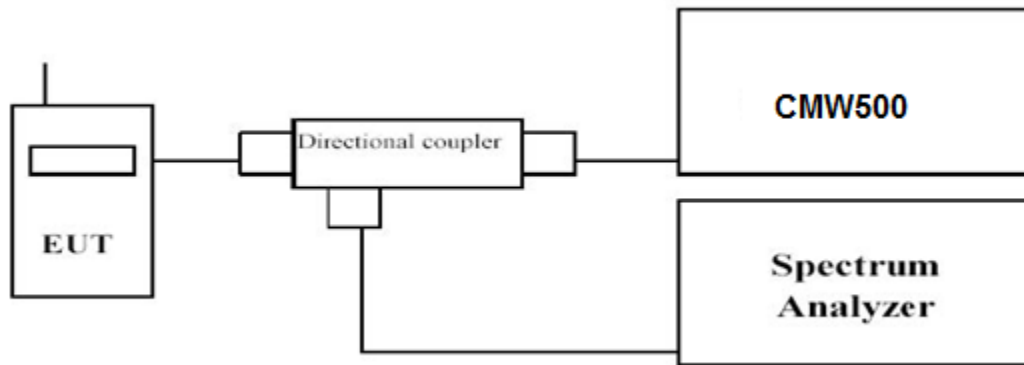
GPRS 1900 Middle channel=661 channel=1880MHz					
DC Power	Temperature (°C)	Frequency error(Hz)	Frequency error(ppm)	Limit (ppm)	Verdict
3.4	25	35	0.0186	2.50	PASS
3.8	25	31	0.0165	2.50	PASS
4.2	25	34	0.0181	2.50	PASS
3.8	-30	30	0.0160	2.50	PASS
3.8	-20	33	0.0176	2.50	PASS
3.8	-10	37	0.0197	2.50	PASS
3.8	0	32	0.0170	2.50	PASS
3.8	10	38	0.0202	2.50	PASS
3.8	20	35	0.0186	2.50	PASS
3.8	30	31	0.0165	2.50	PASS
3.8	40	32	0.0170	2.50	PASS
3.8	50	30	0.0160	2.50	PASS

4.7 Peak-to-Average Ratio (PAR)

LIMIT

The Peak-to-Average Ratio (PAR) of the transmission may not exceed 13 dB.

TEST CONFIGURATION



TEST PROCEDURE

Use spectrum to measure the total peak power and record as P_{Pk} . Use spectrum to measure the total average power and record as P_{Avg} . Both the peak and average power levels must be expressed in the same logarithmic units (e.g., dBm).

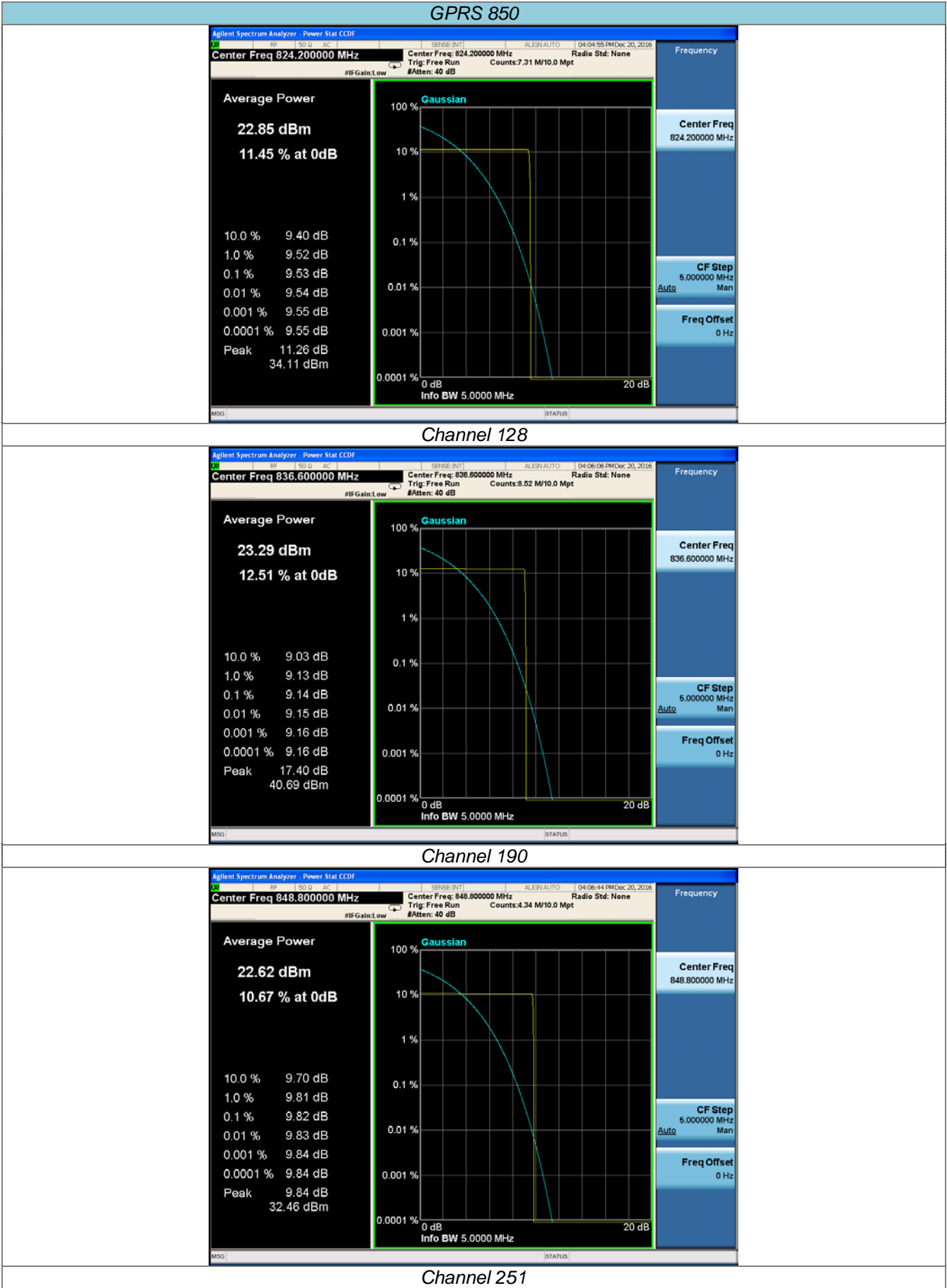
Determine the PAPR from:

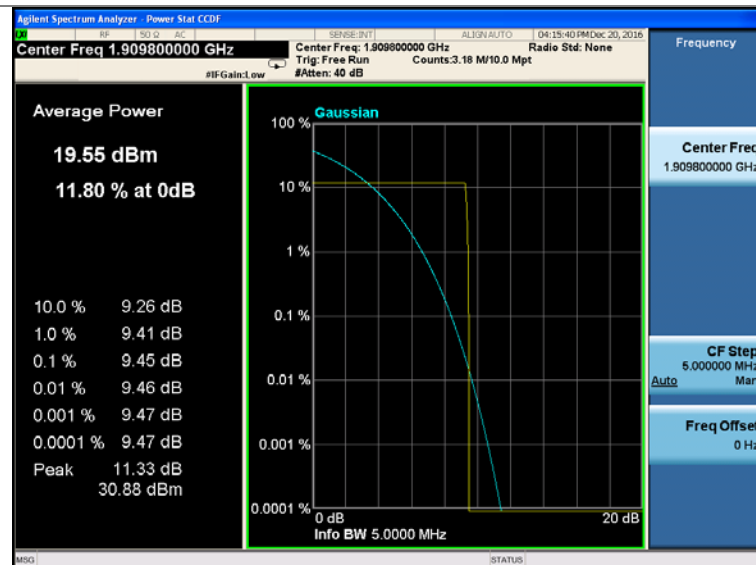
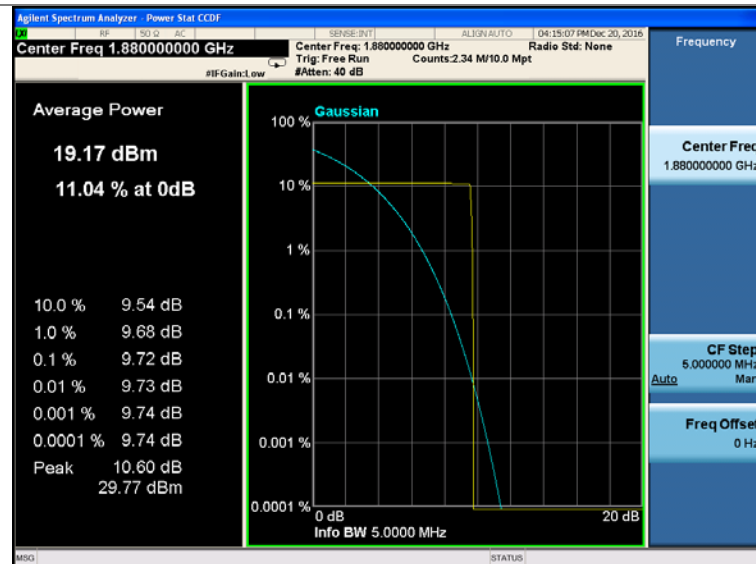
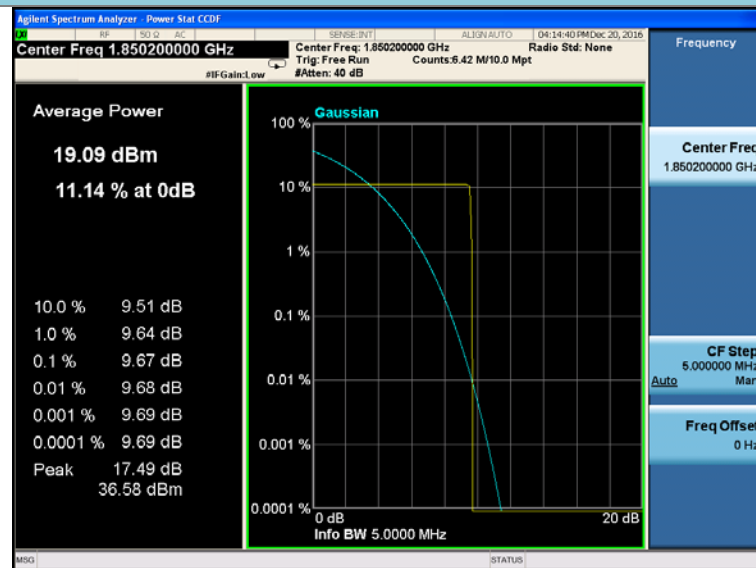
$$PAPR \text{ (dB)} = P_{Pk} \text{ (dBm)} - P_{Avg} \text{ (dBm)}.$$

TEST RESULTS

GPRS 850	
Frequency (MHz)	Measured (dB)
824.20	0.53
836.60	0.14
848.80	0.82

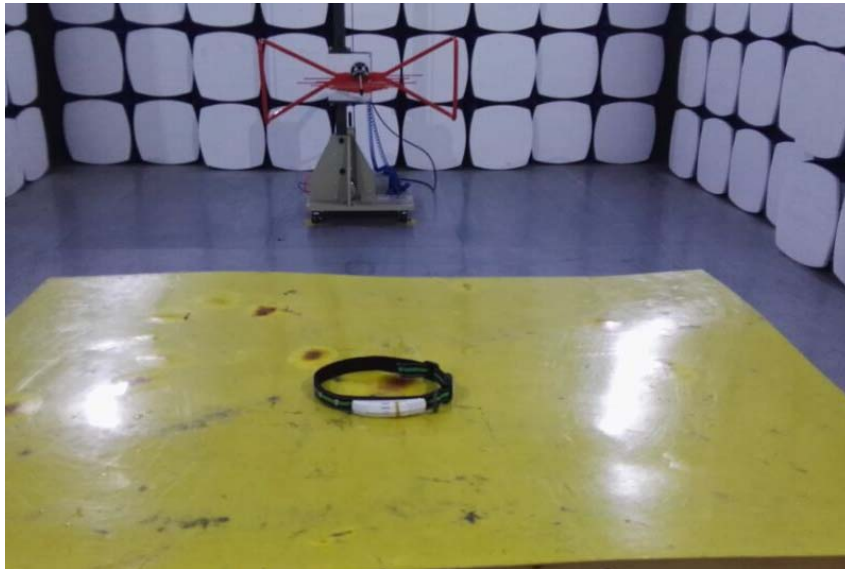
GPRS 1900	
Frequency (MHz)	Measured (dB)
1850.20	0.67
1880.00	0.72
1909.80	0.45





Channel 810

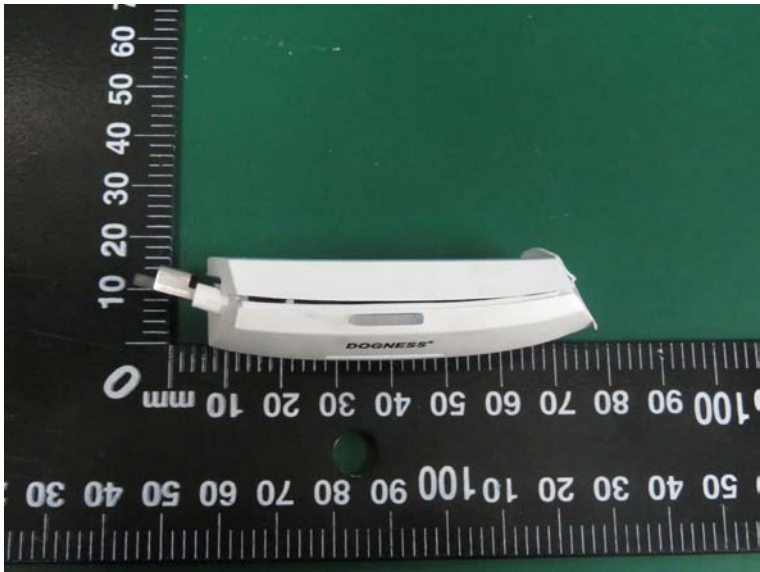
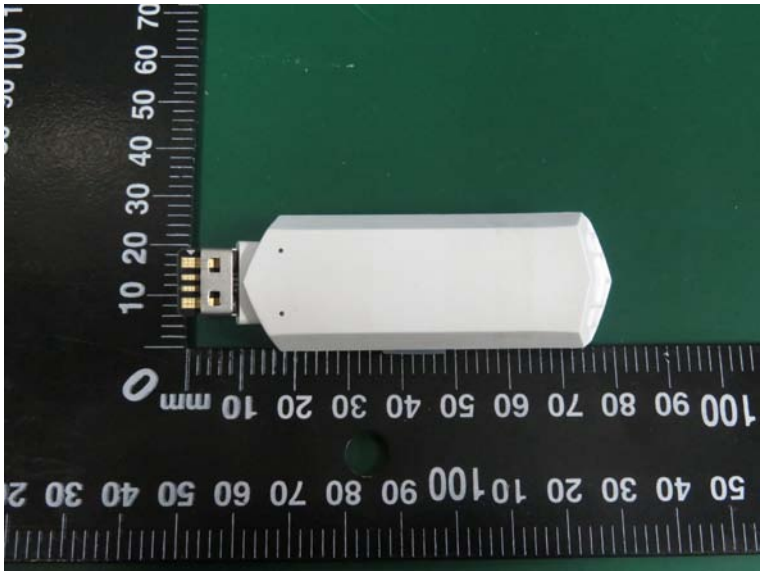
5 Test Setup Photos of the EUT

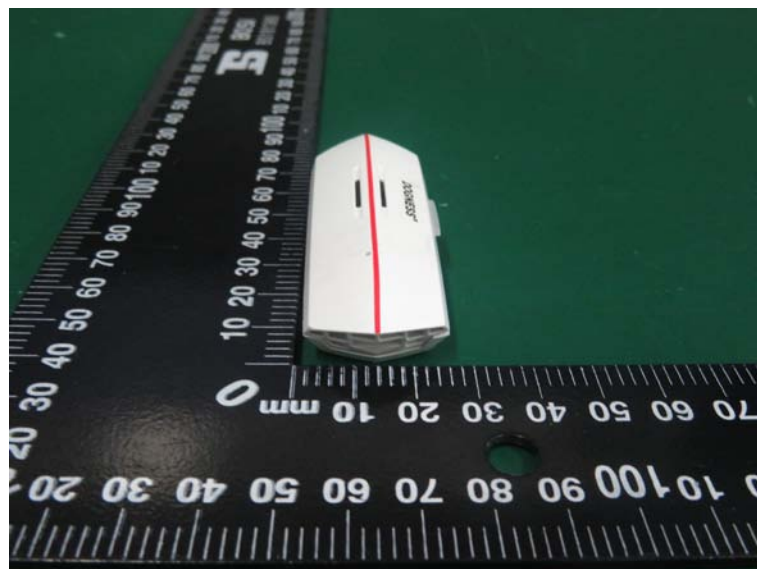
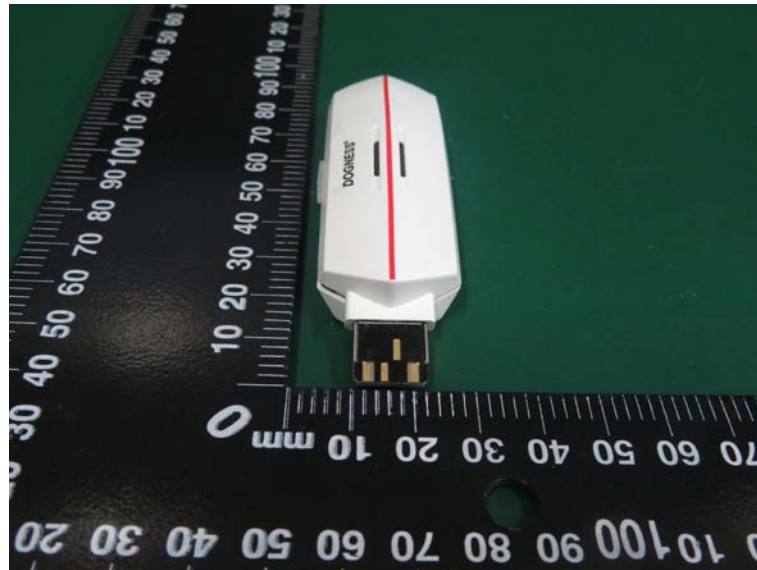


6 External and Internal Photos of the EUT

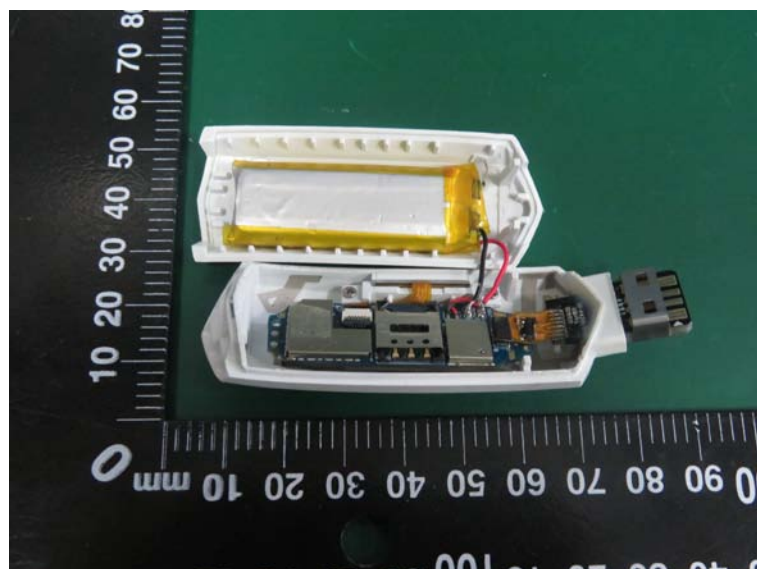
External Photos

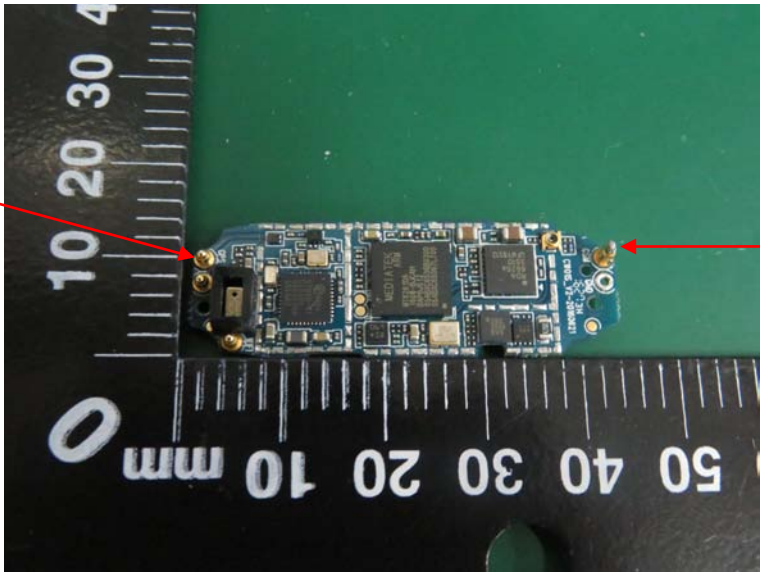
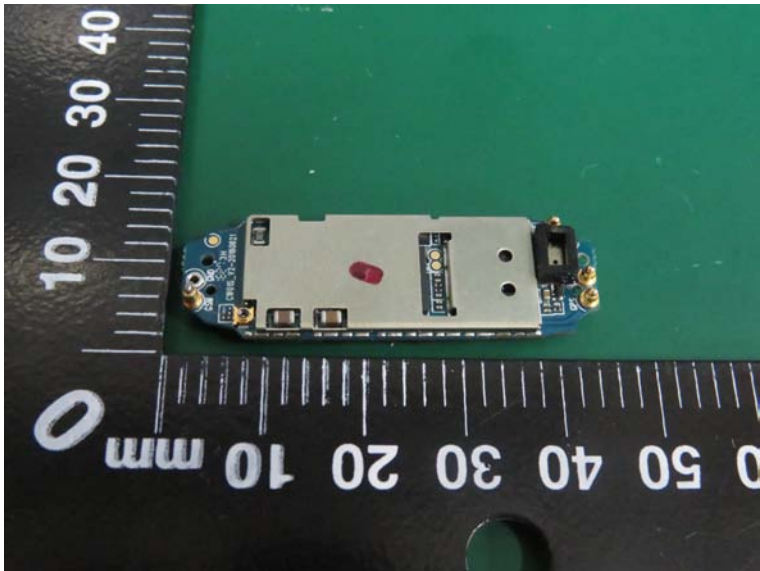
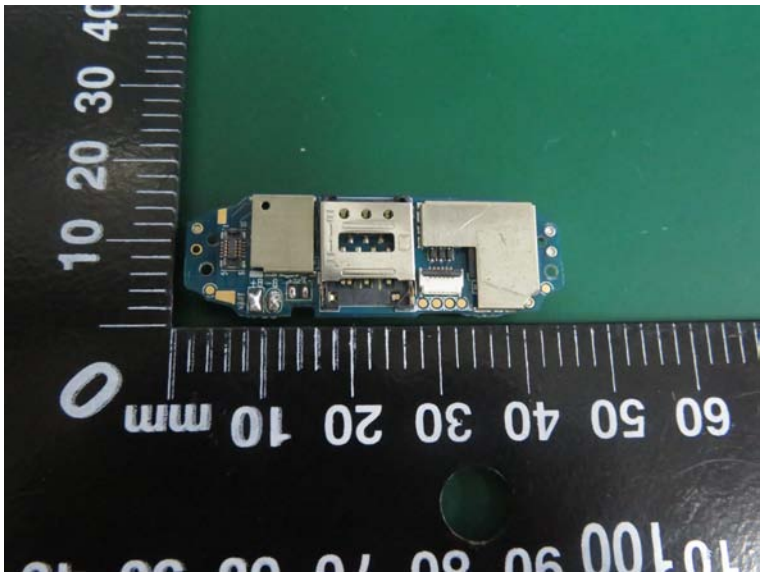






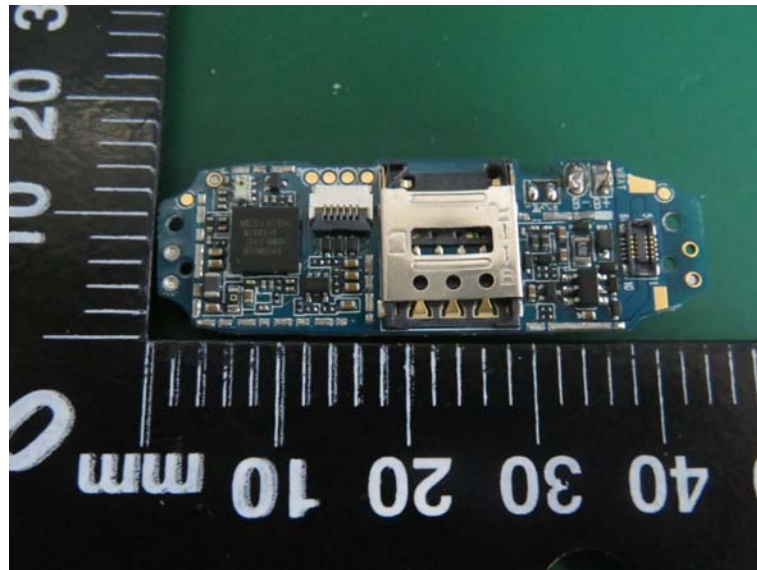
Internal Photos





GPS
antenna

GSM
antenna



.....End of Report.....