

Vr all-in-one

RT-V03 Product Instruction Manual

Please refer to the instruction file first

- In order to ensure safety and correct use, please refer to this manual before using RT-V03.
- Please use RT-V03 in normal way. If it used for other purposes, it may cause personal injury.
- For certain regions or networks, some parts of languages or contents may not be able to use.

Instructions and warnings

Health and safety warnings

- In order to reduce the risk of personal injury, discomfort or property damage, please make sure that the user reads warnings carefully before use.

Before using RT-V03

- Read and follow all the settings and operation instructions of RT-V03 below. Before experiencing visual reality, please adjust RT-V03 according to each user's individual situation and following this indication may cause increasing risk of discomfort.
- If you are pregnant woman, old people, the one who had abnormal binocular vision before, or the one with mental illness, bad heart condition, or other serious illness, we advise you to consult a doctor before using RT-V03.

Convulsion

- Some people (about one in four thousand) may have severe dizziness, convulsion, epilepsy or syncope that caused by flicker or pattern. When these people are watching TV, playing video games or experience virtual reality, this kind of situation may also happen, even though they had never experienced convulsion or syncope, and have no history of convulsion or epilepsy. This kind of convulsion is more common among children who are under 20 years old and adolescent. Anyone who had convulsions, loss of consciousness or other symptoms related to epilepsy before, please consults a doctor before using RT-V03.

Children

- Children who under 13 years old shouldn't use RT-V03. When children (over 13 years old) are using VR, adult need to supervise and notice all the following symptoms, and limit the time children can use VR, so that it can ensure them enough rest time. Please avoid using VR for long time, because it may cause negative effects on their hand-eye coordination, balance and multitasking skills. While children using VR or after using, adult need to closely monitor that whether children appear to be degraded in these capacities.

Only use in a secure environment

- VR can provide immersive virtual reality experience, which will distract you and block your

view to the realistic environment. In order to experience it in the most secure way, please always keep sitting posture when using VR. Please be careful and make sure there is no other person, object, footstep, balcony, window, furniture or other items near you, so that it can prevent you from hitting or falling when using VR. Please do not hold any sharp or dangerous items when using VR. Do not use VR when you need to focus your attention, such as walking, riding bicycle or driving.

- Get used to VR's usage, so that your body can adapt to it. Please use VR just for few minutes at the first time, and then gradually extended the use time of VR, so that you can adapt to virtual reality. When you use VR at the first time, please look around, this can help you adapt to the nuances between real world and the final virtual reality experience.

- Only with intact sense of motion and balance, people can have comfortable experience of virtual reality. When you are tired, needing sleep, drinking or taking medicine, getting a hangover, indigestive, having mental stress or anxiety, getting a cold, flu, headache, migraine or ear pain, please do not use VR, because it will increase your sensitivity to the adverse symptoms.

- When you are in a running vehicle, please do not use VR, because it will increase your sensitivity to the adverse symptoms. Please rest at least 10 to 15 minutes when use VR every 30 minutes, even if you think you don't need to have a rest. Each person's situation is different, so if you feel unwell, please increase the frequency and time of rest. You should make sure how to achieve the best effect.

- If the device is heating, please stop using VR. Touch the overheating device for long time may cause burn.

- Please make sure to place VR horizontally and comfortably at your head, so that you can see single and clear image.

Discomfort

- If the following symptoms appear when using VR, please stop using immediately: convulsion, loss of consciousness, eye fatigue, eye or muscle twitch, inactive movement, distorted sight, blurring, ghosting or other abnormal vision, dizziness, losing direction, impaired balance, impaired hand-eye coordination, excessive sweating, increased saliva secretion, nausea, vertigo, discomfort or pain of head or eye, drowsiness, fatigue or any similar symptoms of motion sickness.

- Like symptoms that may occur after shipping, the symptoms that exposed by virtual reality may last for several hours and become more significant after using. These symptoms that occur after using may include the above symptoms, as well as the excessive sleepiness and degradation of multitasking ability. These symptoms may increase the risk of personal injury when you participate in regular activities in the real world.

- Please use VR again after all symptoms disappeared completely after several hours.

Repetitive stress injury

- Long time use of VR and input devices (such as controllers) may hurt your muscles, joints or skin. If any parts of your body feel tired, sore, numb, burn, stiff or some other symptoms, please stop using and rest for hours before playing again. If the above symptoms and discomfort continue to occur when you playing or after it, please stop using VR and consult a doctor.

Radio frequency interference

●VR may emit radio waves that may affect the function of nearby electronic devices, including cardiac pacemaker. If you wear a pacemaker or other implantable medical device, please do not use VR before consulting a doctor or the manufacturer of medical devices.

Electric shock

In order to reduce the risk of electric shock, please comply with the following warnings:

- Please do not modify or remove any provided components.
- If any cable damaged or wire exposed, please do not use VR.

Sun damage

●Please do not place VR in direct sunlight. Direct exposure to sunlight may cause fire or damage VR.

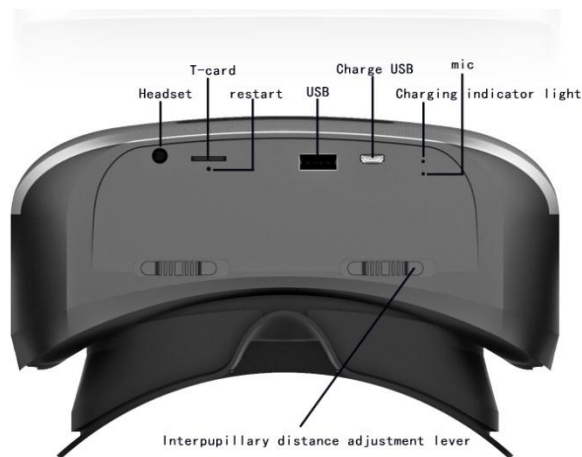
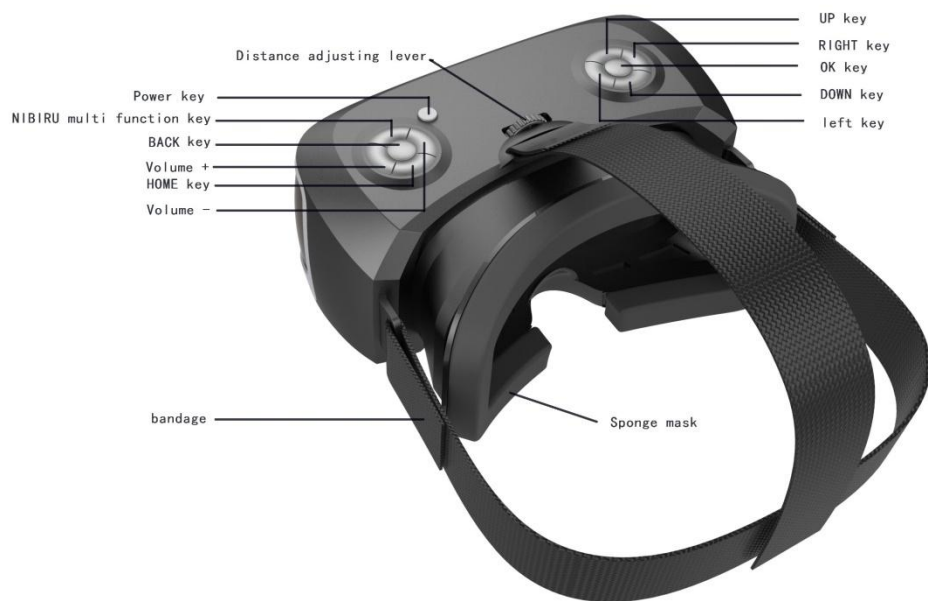
Beginner**About VR**

VR is a kind of helmet mounted virtual reality device, which can provide a wide range of immersive experience for user.

Package content

Check whether there are the following items inside the product box:

- VR, USB adapter, micro USB wired headphone, headband and user's manual.
- The items and available accessories that attached with device may be different because of the region and service provider.
- The attached items are only designed for this device, so it may compatible with other devices. Appearance and specification are subject to change without notice.
- Please only use the accessories that approved by the original factory. If use unapproved accessories, it may cause performance issues and failures, which do not belong to the category of warranty.
- It depends entirely on manufacturers that whether provide all the accessories.



Device structure

Function button

Button

Power button

Function

- Hold the button for 5 seconds to power-on.
- Press the button at display interface can enter to dormant mode. When it is in dormant mode, press the button can awaken.
- Hold the button for 5 seconds to power-off.

Nibiru button

- Long press on Nibiru button, the screen will align your right ahead.
- Short press on Nibiru button can call up the brightness

adjustment

- On application interface, press Nibiru button can call up shortcut menu

Back button

- Press the button can go back to previous menu or quit the application

Volume+

- Press the button can increase the volume of the headphones or the speaker

Volume-

- Press the button can decrease the volume of the headphones or the speaker

Up

- Press the button can select upward

Down

- Press the button can select downward

Left

- Press the button can select leftward

Right

- Press the button can select rightward

Enter button

- Press the button can enter the selected item

Object distance adjusting knob ● By rotating this knob to the left or right, the distance between the lens and the display can be adjusted to the optimal focal length.

Wear VR Sky

- Please do not wear VR when you are wearing glasses, because this may cause facial injury.
- Please keep the lens clean and prevent it from scratching. If the lens is dirty or covered with water vapor, please use the lens cleaning cloth to clean it.
- If you are facial sweating when wearing VR, facial sponge may become dirty, please clean it promptly in order to prevent facial discomfort.

The Usage of VR Sky

● **The enter button, back button and Nibiru button on the all-in-one machine are general buttons.**

1. Click the enter button can enter the subordinate page or adjust related functions.
2. Click the back button on the home page can quit the application; Click the back button on the subordinate page can go back to superior page.
3. Press the Nibiru button can call up system menu, including brightness adjustment button and close application button.
4. Part of applications and pages support all-in-one machine's direction buttons to adjust the operation of the relevant page.

VR Launcher

The operation mode of the entire VR Launcher is to use the head view to aim at the target, and then press the enter button on the all-in-one machine or remote control. All kinds of buttons on the all-in-one machine are playing a support role.



Home page

Use the head view to aim at the target on the home page of VR Launcher, and then click the enter button on the all-in-one machine or remote control to enter application or subordinate page.

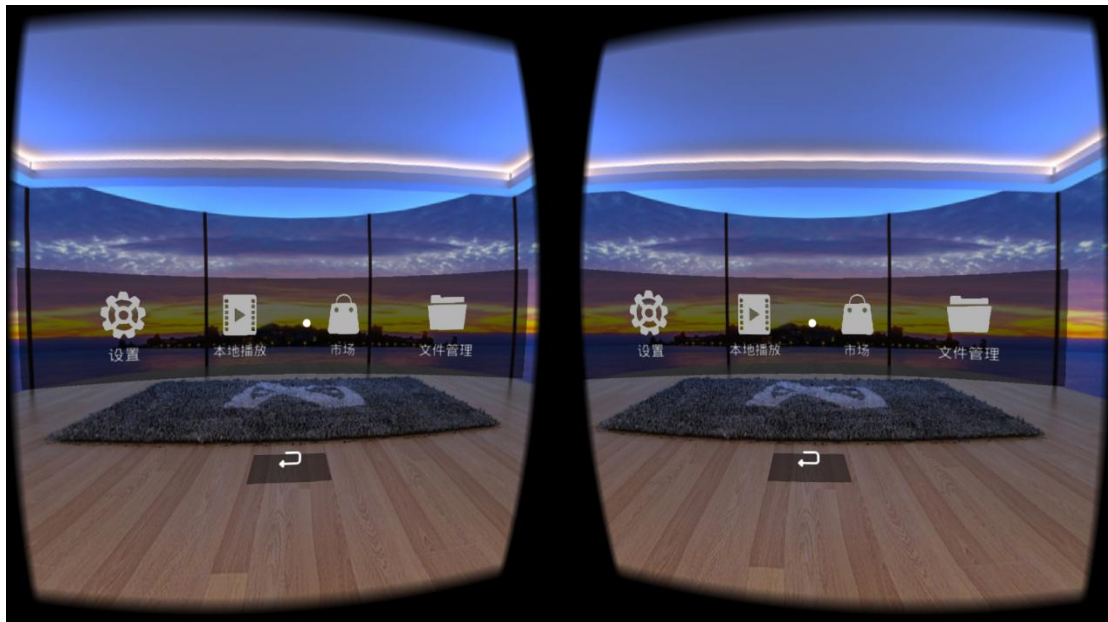
Native application page

1. There are three ways to switch pages within native applications, including using head view to aim at the target and then pressing enter button to switch pages, using the left and right buttons on the all-in-one machine and remote control to switch pages, clicking the left and right buttons at the bottom of the page to switch pages.
2. There are four function buttons at the bottom of the list page: left and right buttons that can switch pages, delete button that can delete APP, back button that can go back to home page.
3. On the list page, click the back button on the all-in-one machine can go back to the home page.



Tools page

1. Use the head view to aim at the target on the tools page, and then click the enter button on the all-in-one machine or remote control can enter subordinate page.
2. Press the back button on the all-in-one machine or the back button at the bottom of tools page can go back to the home page.



3. Settings and file browser pages use the direction buttons, enter button and back button on the all-in-one machine to operate.

Native player

The operation mode of native player is to use the head view to aim at the target, and then press the enter button on the all-in-one machine or remote control, including adjusting all kinds of

functions on the list page and play page; All kinds of buttons on the all-in-one machine are playing a support role.

Operation mode of the list page

1. Use the head view to aim at the target on the list page, and then click the enter button to enter play page; the left and right button on the all-in-one machine and the left and right button on the page can switch the list pages.
2. There are four function buttons at the bottom of the list page: scan button that can rescan the video files in the all-in-one machine, left and right button that can switch pages, delete button that can delete native video file.
3. On the list page, click the back button on the all-in-one machine can quit the application.



Operation mode of the play page and the menu page

1. The play page and menu page use the head view to aim at the target, and then click the enter button on the all-in-one machine or remote control to operate.
2. Downward the head visual angle on the play page can show the progress bar of play. Use head view to aim at any place expect progress bar on the play page and then press the enter button can lock the screen.
3. There are 6 function items and progress bar at the progress bar of play: item that switches the mode of play and pause, item that switches the mode of cycle playing, item that adjusts brightness and volume, item that adjusts play progress of the video, item that enters the menu page, and the item that backs to the list page.
4. On the play page, click the back button on the all-in-one machine can go back to superior page.



PPTV player

The operation mode of PPTV player is to use the head view to aim at the target on PPTV player, and then click the enter button on the all-in-one machine or remote control, including adjusting all kinds of functions on the list page and play page.

List page

1. Use the head view to aim at the target on the list page, and then click the enter button can enter detail page; after entering the detail page, aim at the play button or the back button and then press the enter button can enter the play list or the back list.
2. Click the left and right button at the bottom of the list page can switch pages.
3. On the list page, click the back button on the all-in-one machine can quit the application.





Play page

1. Downward the head visual angle on the play page can show the progress bar of play; Use head view to aim at any place expect progress bar on the play page and then press the enter button can lock the screen.
2. There are 4 function items and progress bar at the progress bar of play: item that switches the mode of play and pause, item that adjusts brightness and volume, item that adjusts play progress of the video and the item that backs to the detail page.
3. On the play page, click the back button on the all-in-one machine can go back to superior page.

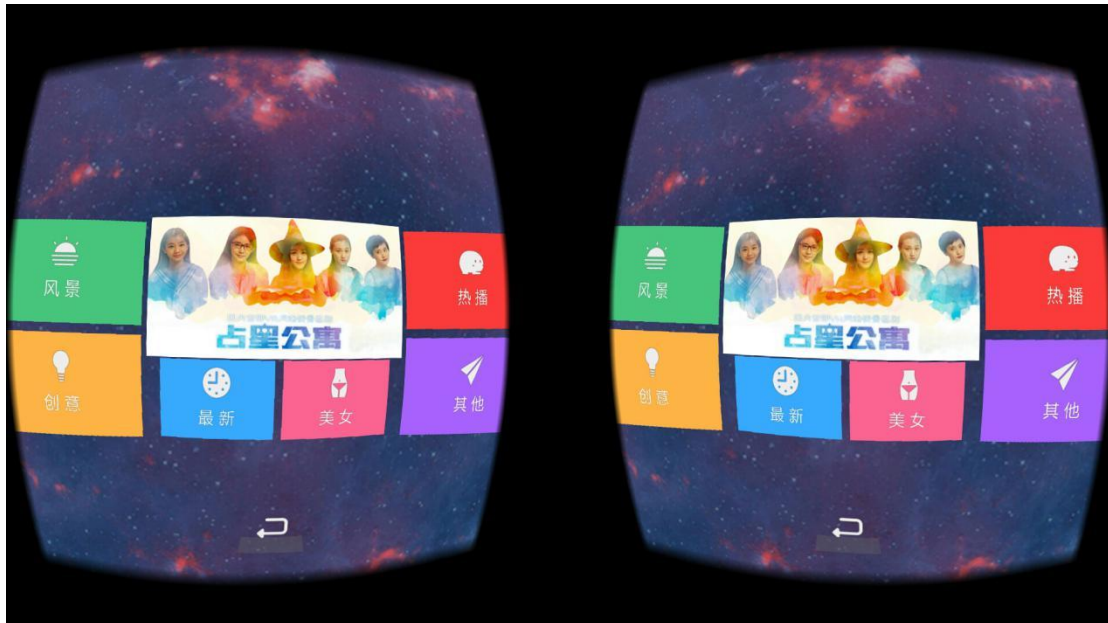


Panoramic OL

The operation mode of panoramic OL is to use the head view to aim at the target, and then press the enter button on the all-in-one machine or remote control, including adjusting all kinds of functions on the list page and the play page; All kinds of buttons on the all-in-one machine are playing a support role.

Operation mode of the home page

1. Use the head view to aim at the target on the home age, and then click the enter button to enter the list page.
2. Click the back button at the bottom of home page can quit the application.



Operation mode of the list page

1. Use the head view to aim at the target on the list age, and then click the enter button to enter the play page.
2. Use the head view to aim at the next page on the list page and then click the enter button can switch the pages; the left and right button on the all-in-one machine and the left and right button on the page also can switch the list pages.
3. There are three function buttons at the bottom of the list page: the left button and the right button that can switch pages, back button that can go back to superior page.



Operation mode of the play page

1. The play page uses the head view to aim at the target, and then click the enter button on the all-in-one machine or remote control to operate.
2. Downward the head visual angle on the play page can show the progress bar of play; Use head view to aim at any place expect progress bar on the play page and then press the enter button can lock the screen.
3. There are 4 function items and progress bar at the play page: item that switches the mode of play and pause, item that adjusts brightness and volume, item that adjusts play progress of the video and the item that backs to the list page.
4. On the play page, click the back button on the all-in-one machine can go back to superior page.

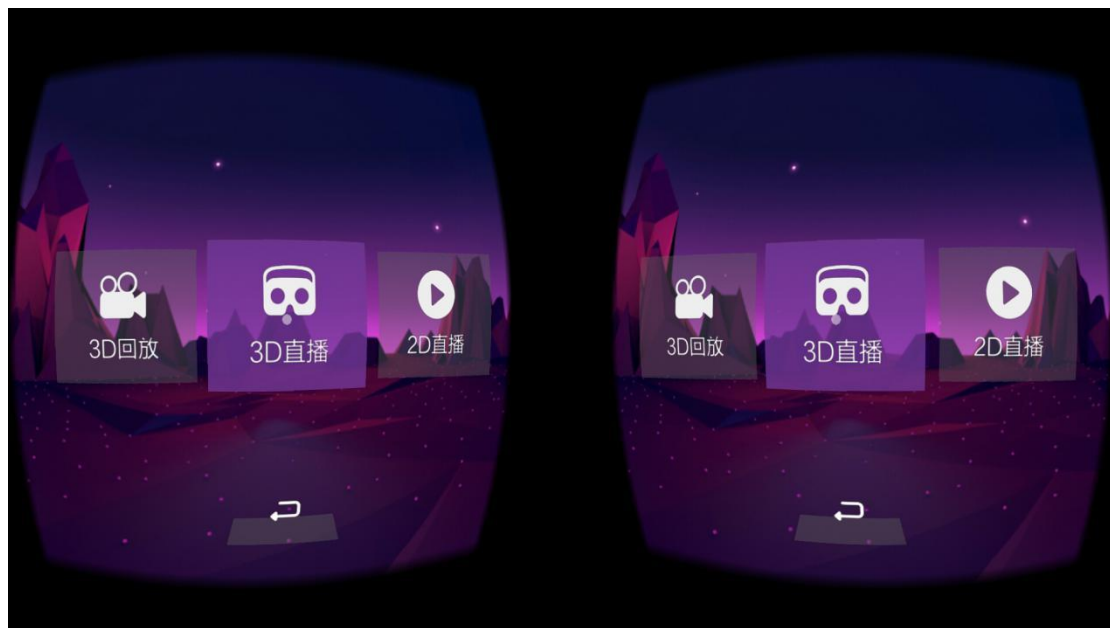


Live sing

The operation mode of live sing is to use the head view to aim at the target, and then press the enter button on the all-in-one machine or remote control, including list page enter play page and adjusting all kinds of functions on the play page; All kinds of buttons on the all-in-one machine are playing a support role.

Operation mode of home page

1. Use the head view to aim at the target on home age, click the enter key to enter to list page.
2. Click the back key at the bottom of home page can quit the application.



Operation mode of the list page

1. Use the head view to aim at the target on the list age, and then click the enter button to enter the play page.
2. Use the head view to aim at the next page on the list page and then click the enter button can switch the pages; the left and the right buttons on the all-in-one machine and the left and the right buttons on the page also can switch the list pages.
3. There are three function buttons at the bottom of the list page: left button and right button that can switch pages, back button that can go back to superior page.



Operation mode of the play page

1. The play page uses the head view to aim at the target, and then click the enter button on the all-in-one machine or remote control to operate.
2. Downward the head visual angle on the play page can show the progress bar of play; click any place expect progress bar on the play page can lock the screen.
3. There are 4 function items and progress bar at the play page: item that switches the mode of play and pause, item that adjusts brightness and volume, item that adjusts play progress of the video and item that backs to the list page. Live page does not have progress bar of play and the progress adjustment function.
4. On the play page, click the back button on the all-in-one machine can go back to superior page.

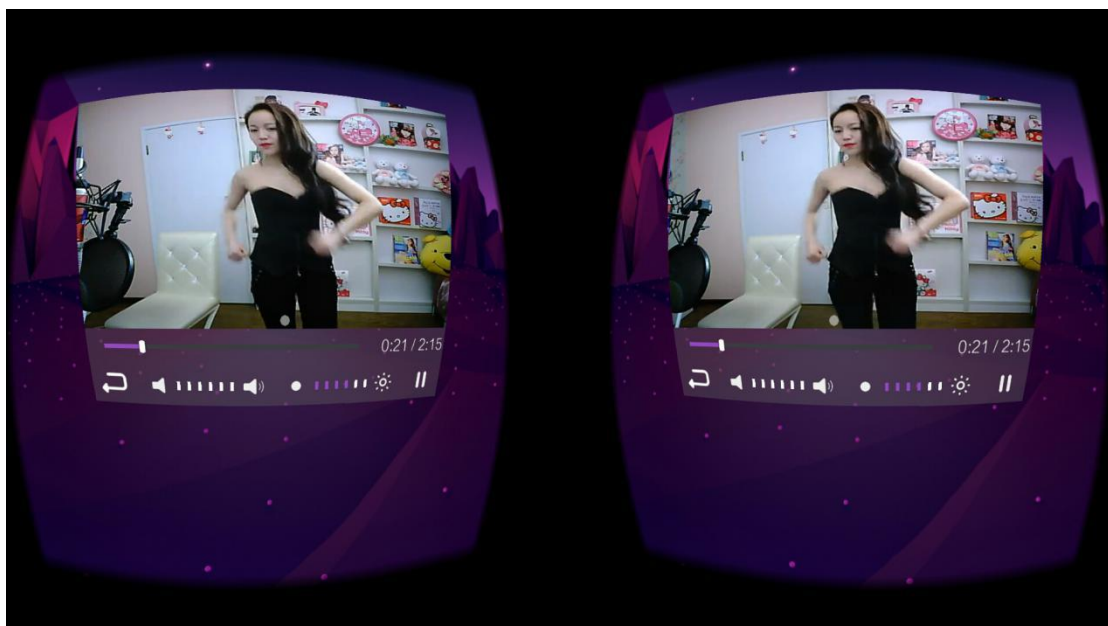
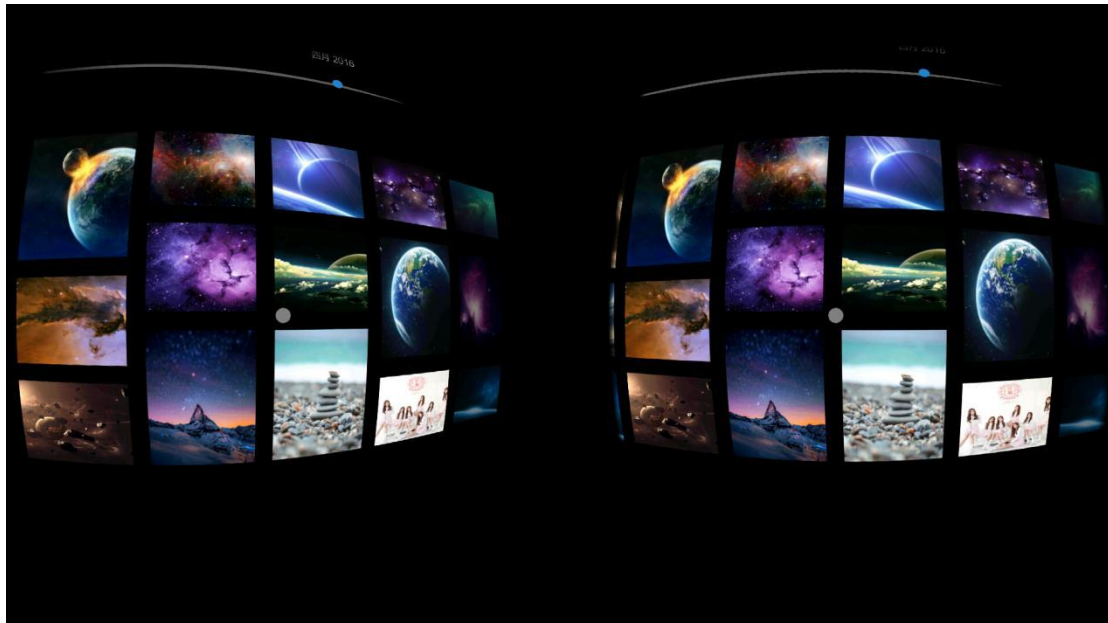


Photo wall

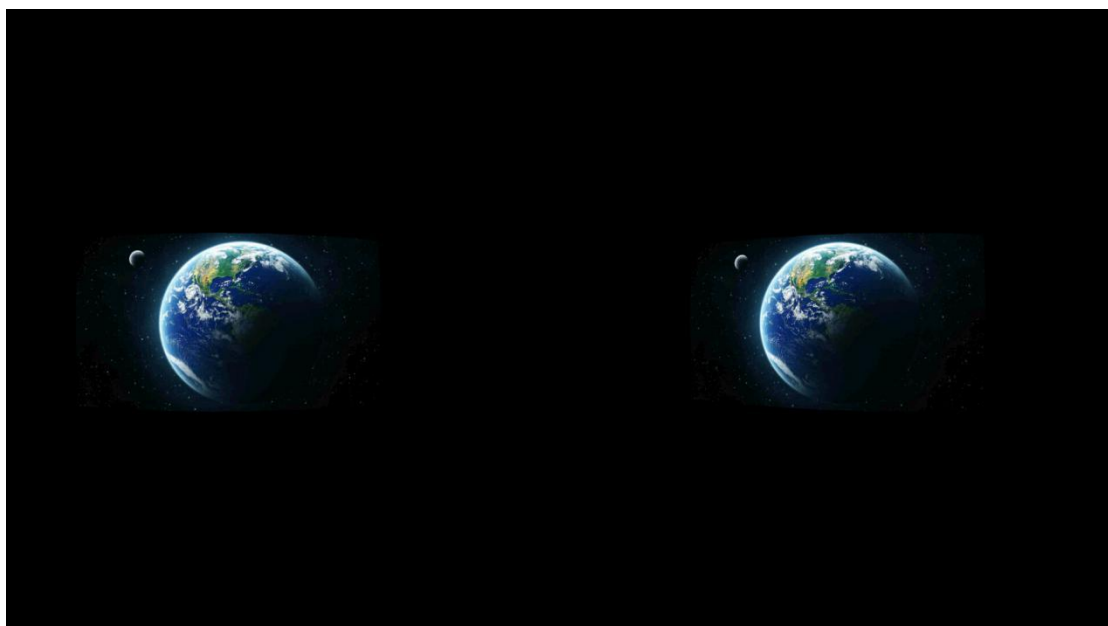
The photo wall uses the head view to aim at the target, and then click the enter button on the all-in-one machine or remote control to operate.

Operation mode of the page

1. On the photo wall page, use the head view to aim at the non-current page, and then click the enter button can switch the pages.
2. Use the head view to aim at the current photo on the photo wall page, and then click the enter button can enter the photo page.



3. Click the enter button on the photo wall can view the next photo.
4. On the photo page, click the back button on the all-in-one machine can go back to the photo wall page; Click the back button on the photo wall page can quit the application.

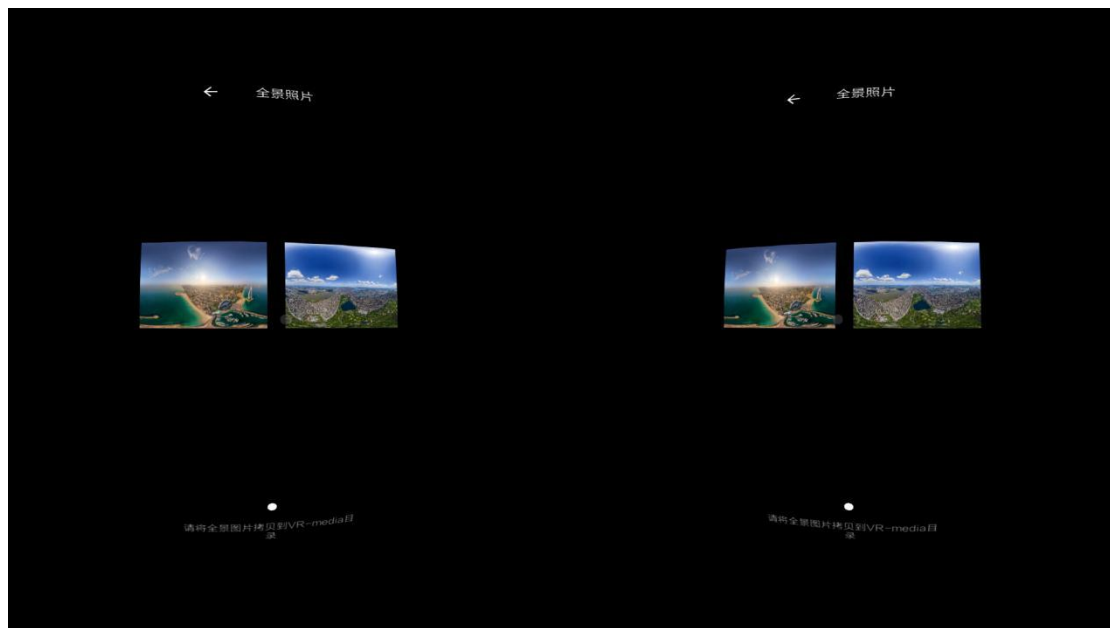


Panoramic photo

Panoramic photo uses the head view to aim at the target, and then click the enter button on the all-in-one machine or remote control to operate.

Operation mode of the page

1. Use the head view to aim at the non-current page on the photo wall page, and then click the enter button can switch the pages.
2. Use the head view to aim at the current photo on the photo wall page, and then click the enter button can enter the photo page.



3. On the photo page, click the back button on the all-in-one machine can go back to the photo wall page; Click the back button on the photo wall page can quit the application.



Application program

Install the application software

If you need to use VR, you must install application software manually.

The installation method or the screen display may be different due to the different software versions.

Click the store icon on the page, select the application that needs to be download, and then press the “enter” to start the installation.

Delete the application software

Click the “native” icon on the page, press the “dustbin” icon until it turns red, select the application that needs to be uninstalled, and then click the “x” at the top right corner of the application to delete the application.

Language setting

If you want to change the language, please select: “setting” ”general” ”language”, and then select the language you want.

Video play

Select the video folder first and then select the video you want to watch, and then press the “enter” to play. After there appears tools bar, press the “enter” can use the following functions:

Pause or continue the play.

Use the head view to aim at the progress bar to perform fast forward or backward function.

View the images

Select the images folder, and then select the image.

If you need to view the previous image, please slide backward on the touch panel.

If you need to view the next image, please slide forward on the touch panel.

If you need to enlarge the size of image, please slide upward on the touch panel.

If you need to smaller the size of image, please slide downward on the touch panel.

Long press on Nibiru button, the screen will align your right ahead.

Trouble shooting

The image on the screen is moving randomly

VR Sky may be interfered by computer, television or electronic transmission lines and other items with magnetic field.

Please avoid using VR Sky at the magnetic field.

Unable to boot

Please check whether the battery has run out after a long time without use.

Safety information

In order to protect you and other people from hurt and also protect your device from damage, please use it after reading all the following information.

Please use the device for intended use

Please do not drop the charger or device, or cause any collisions.

Please do not use or store device at dusty or dirty place.

Dust or foreign matter will cause device breakdown.

Please do not allow the connector of device to contact with conductor, such as liquid, dust, metal filings or pencil lead.

Contact with conductor may cause short circuit or erosion at the connector part, as well as explosion, fire or device damage.

Please do not bite or suck the device.

Children or animals will be choked by swallowing small parts.

Please do not poke the device or the attached accessories to the eyes, ears or mouth.

This may cause suffocation or serious injuries.

Please do not put the device at a place with smoke or fog.

This may damage the surface of the device or cause device breakdown.

Please keep the device dry.

Moisture and various liquids may damage the device parts or electronic circuits.

The device can be used at ambient temperature between 0°C to 35°C and can be stored at ambient temperature between -20°C to 50°C. It will damage the device or shorten the lifespan of the battery if use or store the device beyond the recommended temperature range.

Please do not store the device in the high-temperature zone, such as putting it inside the car in summer. This may cause the screen failure, device breakdown or battery explosion.

Do not use the device when error occurs. Continue to use the device after an error may cause physical discomfort or personal injury.

Please do not poke the device or the attached accessories to the eyes, ears or mouth.

This may cause suffocation or serious injuries.

Please do not put the device at a place with smoke or fog.

This may damage the surface of the device or cause device breakdown.

If you are allergic to paint or metal parts of the product, the skin may be itching, inflammation or swelling, etc. If this occurs, please stop using and consult a doctor.

Please do not use your device in the hospital, aircraft, car or other places where will be interfered by channel. Doing this may cause device breakdown, personal injury or property damage.

Please protect your hearing and ears when using headphones.

- . Over exposure to loud sounds can cause hearing damage.
- . Always turn the volume down and then insert the headphones into the sound source, and listen to the music with the minimum volume set.
- . Please ensure that the headphones are not wrapped around the nearby objects.

If the device is broken or damaged, do not continue to use.

Broken glass may hurt your hands and face.

Use the battery, charger, accessories and supplies that approved by manufacturer.

Not responsible for the user's safety by using accessories or supplies that not approved by the original factory.

Please do not remove, modify or repair the device.

Any change or modification of the device will not be guaranteed by the manufacturer.

When cleaning the device, please note the following items.

- . Please use a clean soft cloth or cotton swab to wipe the device and its lens.
- . Please do not use chemicals or cleaning agents, otherwise it may fade the device shell or corrode it.
- . Please do not wash the foam pad, otherwise it may cause the quality degradation of the foam pad.

Please be caution when use or store the device and charger.

- . Please do not place the battery or device in a heating device (such as putting it inside or above the microwave oven, the oven, or the radiator).
- . Please do not squeeze or puncture the device.

Only allow the person with relevant qualifications to maintain the device.

If allow the person without relevant qualifications to maintain the device, it may damage the device, and it is not under warranty.

Product user

Log in the official website

1. Product firmware update and download
2. Official after-sales service inquiry
3. Product quality can be guaranteed if purchase the product through official channel.

Product model	RT-V03
Operation system	Based on Android4.4 custom-made multidimensional system
Screen size	5.5 inch
Screen type	Sharp IPS screen
Screen resolution	1920×1080
Processor	allwinner H8
GHz	2.0 GHz
RAM	2GB
Built-in storage	16GB
Wi-Fi	support
Geomagnetic gyroscope	support
Blue tooth 4.0	support
Aspherical concave lens	focal length 42mm
Built in interface	USB、TF、3.5mm headphone jack
TF card	support
OTG function	support
Physical button	10
Battery	built-in 3200mah
Size	184*120*82mm
Weight	408g

Service hotline:

FCC Warning:

This equipment has been tested and found to comply with the limits for a Class B digital device, pursuant to part 15 of the FCC Rules. These limits are designed to provide reasonable protection against harmful interference in a residential installation. This equipment generates, uses and can radiate radio frequency energy and, if not installed and used in accordance with the instructions, may cause harmful interference to radio communications. However, there is no guarantee that interference will not occur in a particular installation. If this equipment does cause harmful interference to radio or television reception, which can be determined by turning the equipment off and on, the user is encouraged to try to correct the interference by one or more of the following measures:

- Reorient or relocate the receiving antenna.
- Increase the separation between the equipment and receiver.
- Connect the equipment into an outlet on a circuit different from that to which the receiver is connected.
- Consult the dealer or an experienced radio/TV technician for help.

Caution: Any changes or modifications to this device not explicitly approved by manufacturer could void your authority to operate this equipment.

This device complies with part 15 of the FCC Rules. Operation is subject to the following two conditions: (1) This device may not cause harmful interference, and (2) this device must accept any interference received, including interference that may cause undesired operation.

The device has been evaluated to meet general RF exposure requirement. The device can be used in portable exposure condition without restriction.