

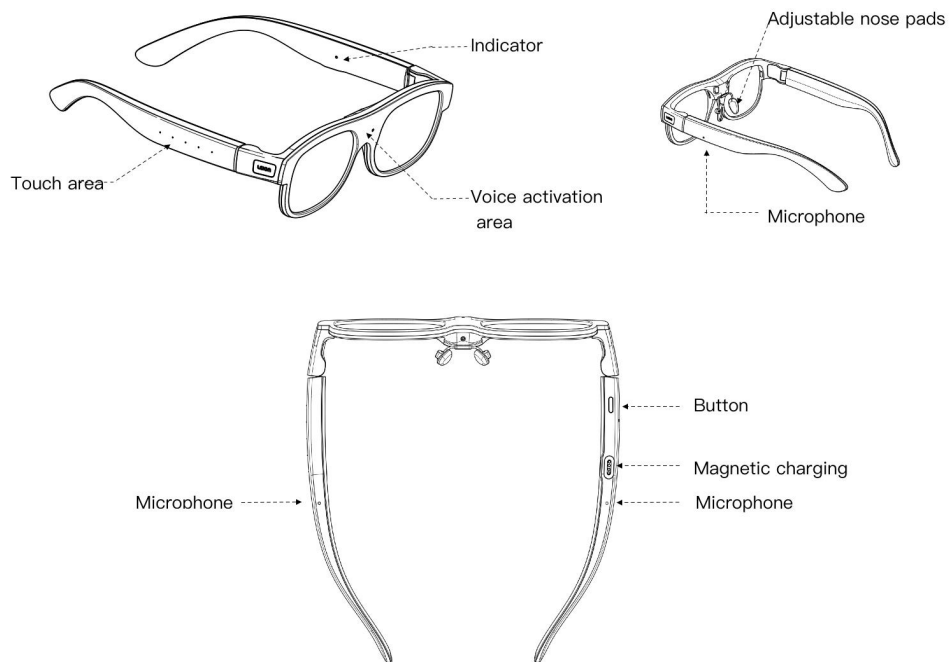
Cover

LEION HEY2 AR Glasses

User Guide

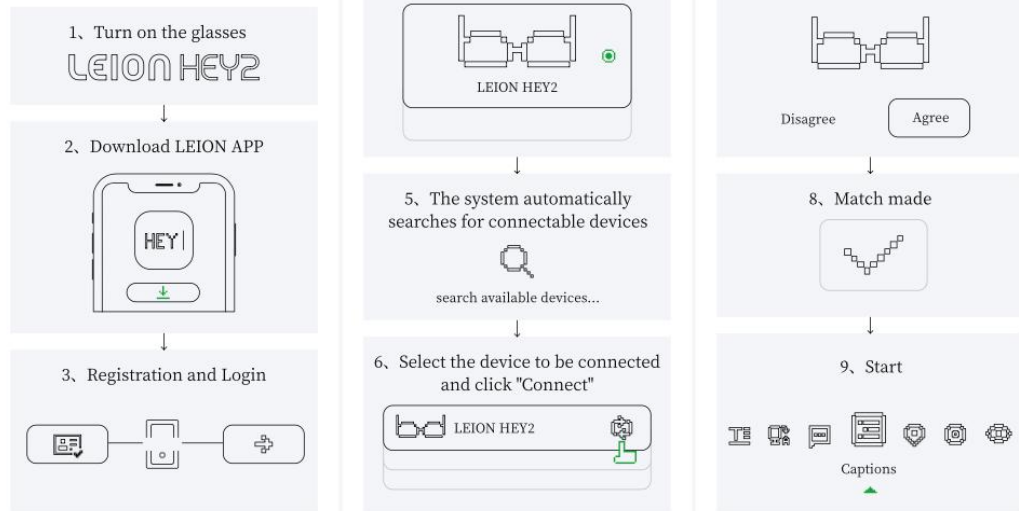
Product Overview

| | |
|-----------------------|---|
| Product Name | LEION HEY2 AR Glasses |
| Product model | G36A |
| Product Specification | LEION HEY2 AR Glasses,green LOEx2,MICx4,BLE,WiFi 2.4/5GHz,black |



Quick start

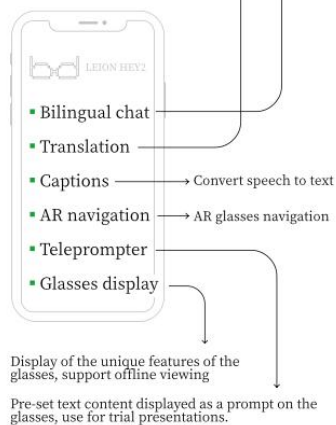
01/Glasses connection operation



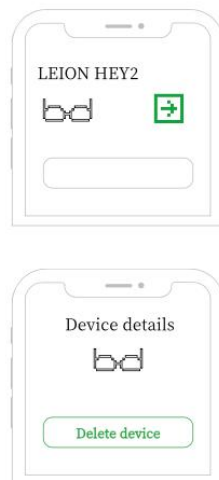
02/Main Function Introduction

Real-time bidirectional translation in a free communication environment between the speaker and the listener in a foreign language

In real-time, receive translated content such as lectures and meetings



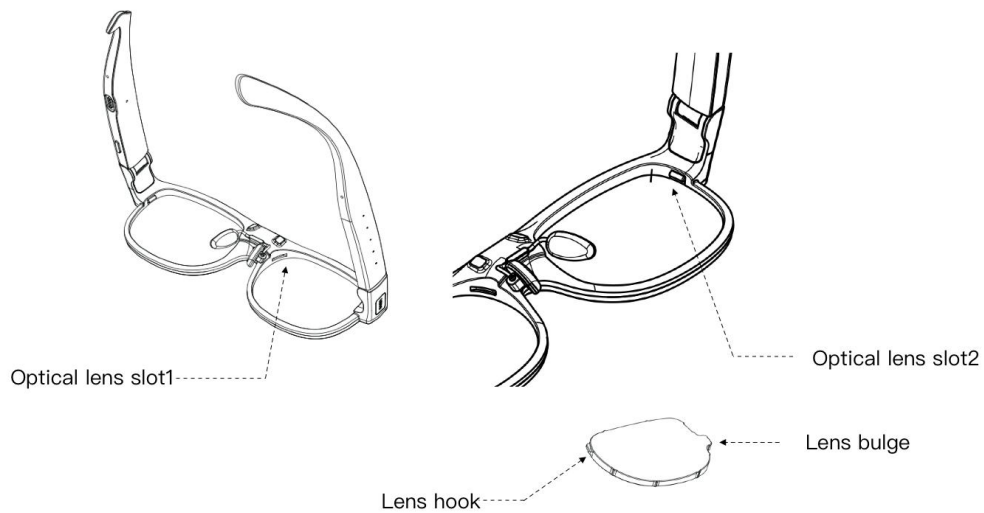
03/How to delete device



04/How to add device



Installation



1. Installation of refractive lenses (suitable for vision needs such as myopia/hyperopia/astigmatism)

Align the lens buckle with the position of the **optical lens slot1**, align the lens handle with the **optical lens slot2**, and lightly press the lens handle with your finger to install the optical lens in place.

2. Refractive lens removed

Pull the lens handle upward to lift the optical lens upward from one side of the lens handle to remove the optical lens.

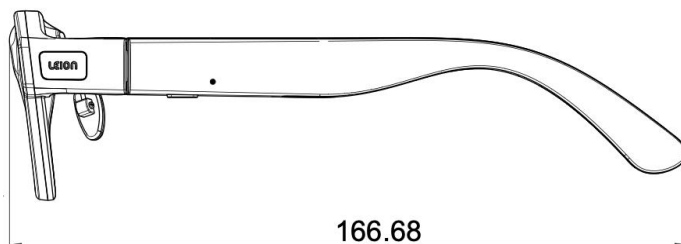
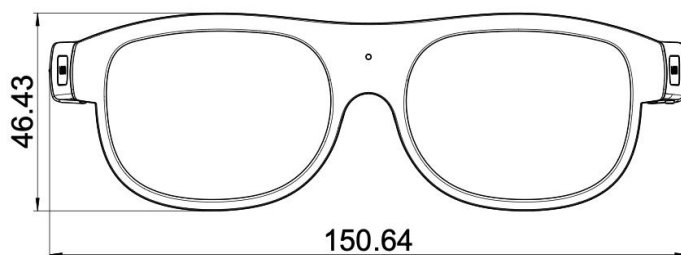
Buttons

| | |
|------------------------------|--|
| Power button | |
| Press and hold for 1 second | Power on |
| Press and hold for 3 seconds | Shut down |
| Click | Turn on the screen / Turn off the screen |
| Double cli | Launch Quick Actions |

| Indicator | | |
|------------------|---------------|---|
| Changing | Slow Flash | The device charges normally |
| Device is paired | Keep blinking | Device can be searched |
| Low battery | Flash 3 times | The battery is too low. Please charge it before turning on the device |

* Device operations may change in subsequent upgrades and updates. Please refer to the latest version.

Specifications



| Category | Content | Description |
|------------------|---------|------------------------|
| Basic parameters | Memory | RAM 64MB FIASH 64MB |
| | Weight | 49±2g |

| | | |
|------------------------|-----------------------|-------------------------|
| | Size | 167×151×46mm |
| | Resolution | 480×640 |
| | Brightness | 1500nits |
| | FOV | 25° |
| Basic characteristics | Color | Green |
| | Indicator light | White LED×1 |
| | Button | Physical button×1 |
| | Touch | Sliding control panel×1 |
| | Charging interface | Magnetic charging |
| Electrical performance | Calibration voltage | 3.87V |
| | Battery capacity | 245mAh |
| | Battery type | Lithium-ion battery |
| | Charging voltage | 5V $\overline{=}$ 250mA |
| Accessories | Charging case | 3100mAh |
| Other | Operating Temperature | 0℃ ~ 45℃ |
| | Storage Temperature | 0℃ ~ 35℃ |

Operations

Accessories include:

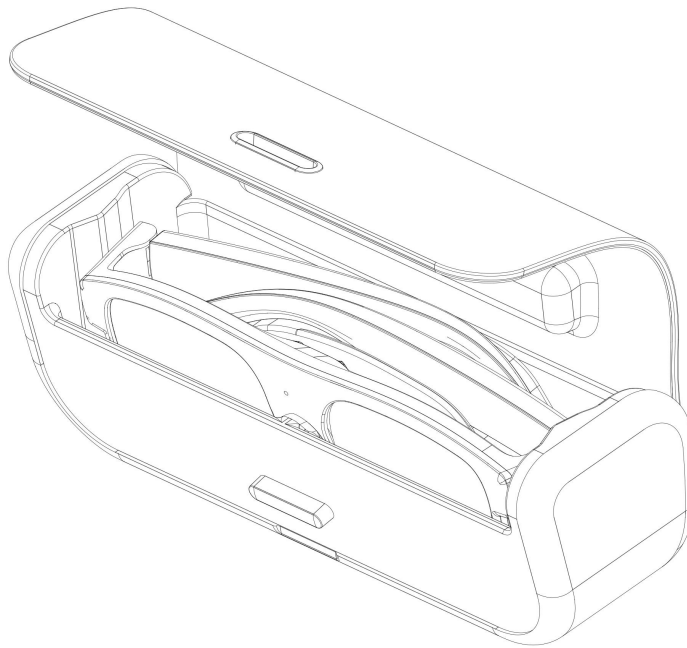
- Glasses * 1
- Glasses cloth *1
- Charging case *1

- Instruction set *1
- Letter to Users*1

*The product package does not include a power adapter. The glasses must be charged in the matching AR glasses charging case.

Storage and charging of glasses

Please fold and store the temple as shown in the figure, and place it horizontally in the smart charging case for glasses.



Steps for charging the glasses

Fold the temple of the glasses and place them in the charging slot of the case. The floating magnetic charging does not require special alignment.

Check battery level

- Open or close the door, four white LED lights show the remaining power, respectively 25%, 50%, 75%, 100%.
- Automatically detect the load status when the light is on. If there is no load (no glasses in the chamber), the light will go out after 3 seconds. If there is a load (glasses in the chamber), the light will stay on. The light will go out when the glasses are fully charged.
- When closing the door, the magnetic lock automatically locks.

Software Download and Use

Use your mobile phone to search for, download, and use the APP "LEION" that is compatible with this device to complete the Bluetooth network configuration and pairing operations for the glasses.

*The APP only supports pairing with mobile phone versions running Android 10 or higher, and Apple iOS 11 or higher.

1. During the pairing connection, please ensure that the Bluetooth function of your phone is turned on and that the distance between your phone and the glasses is within 1 meter.
2. To ensure successful pairing and setup, please make sure that both the glasses and the phone have a battery level higher than 20% to avoid pairing failure due to insufficient battery power.
3. After the pairing is successful, you can make personalized selections and adjustments in the settings according to your own habits.
4. To ensure a successful factory reset and firmware upgrade, please make sure your glasses have more than 50% battery power to avoid failure due to low battery.

*The product will be continuously optimized and updated. The content and specifications of this manual are subject to change without notice.

Scan the QR code for more operation instructions



Contact Us

Official Website: <https://leion.llvision.com>

Safety Instructions

Instructions for Use

Before using and operating the device, please read and follow the following precautions to ensure optimal device performance and avoid dangerous or illegal situations.

1. Based on ergonomic dimensions, this device is recommended for users aged 14 and above and is not suitable for children. The device and its accessories may

contain small parts. Please keep the device and its accessories out of the reach of children. Children may accidentally damage the device and its accessories, or swallow small parts, which may lead to suffocation or other hazards.

2. This device is a precision optical display device and is only waterproof for daily use. When there is water on the surface of the glasses during daily use, please dry it in time. If water is found to enter the glasses, please turn off the device first and continue to use it after it is dry.
3. Avoid contact with water and sweat at the magnetic position of the device to prevent power failure.
4. Avoid water ingress into the magnetic charging interface in the charging case of the smart glasses that come with this device.
5. The display lens of this device is made of glass, which is fragile. Please store it properly. Do not wear this device for intense sports or driving, or any other activities that require high concentration. Do not wear this device for any activity where distraction may cause danger.
6. Please use this device within the temperature range of 0°C to 45°C. If the device is stored for a long time, please ensure that it is stored within the temperature range of 0°C to 35°C.
7. When using this device, please keep it away from places with abnormal temperature and humidity, such as high-temperature and high-humidity places like heaters, stoves, hot springs, and bathrooms, to avoid damage to the electronic components of the glasses. Also, avoid any strong solvents coming into contact with the glasses and lenses, as these liquids can corrode and damage the components and appearance.
8. You should use the glasses case provided by LLVISION to store and protect this device. Otherwise, you should be aware that using other glasses cases to store and protect this device may cause wear and tear or breakage.
9. Please ensure that the device is connected to a stable network. For any charges, please contact your local network service provider.
10. Any radio transmitting equipment (including this product) may interfere with the use of inadequately protected medical equipment. Please consult medical personnel or medical equipment manufacturers to ensure compliance with relevant regulations when using relevant electronic equipment.
11. The operating system of this device supports official system updates. If you modify the system files in a cracked way, it may lead to security risks in the system. The manufacturer will not provide support or assume any responsibility for end users in these cases.

The content of this manual may vary slightly from the actual function, specification or design of the product without prior notice. Therefore, any claim based on the data, illustration or text description in this manual will not be accepted.

Battery Safety Instructions

1. This product is not sold with a power adapter. If the consumer uses a power adapter for power supply, a power adapter that meets the requirements of local regulations and standards should be used.
2. If the device is stored for a long time, ensure that the battery is fully charged and that the device is charged once every three months to avoid battery over-discharge, which may cause the device to malfunction.
3. This device contains a lithium battery. Please use a standard charger with safety certification for charging. Do not hit, throw or subject the battery to mechanical shock. Do not use this product in extremely hot environments, such as direct sunlight or in a car on a hot day, as this may cause the battery to overheat and pose a danger.
4. Do not submerge or wet the glasses.
5. Do not charge in the presence of fire or under extreme conditions such as extreme heat or cold.
6. Do not put the glasses into fire or heat them.
7. Do not use nails or other sharp objects to pierce the glasses housing.
8. Do not disassemble the glasses in any way.
9. Do not place glasses in a microwave oven or pressure vessel.
10. If the electrolyte gets into your eyes after battery leakage, do not rub them. Instead, rinse them with water and seek medical attention immediately.
11. The electronic device contains a lithium battery. When it is discarded, it should not be disposed of together with household waste. Please discard the device in a trash can for electronic devices or dispose of it in accordance with local laws and regulations.

Environmental Protection Notice

1. The "environmentally friendly service life" of this product is 10 years. The environmentally friendly service life of replaceable parts such as batteries may be different from that of the product. The environmentally friendly service life refers to the safe service life during which no hazardous substances will leak from the product under the normal use conditions described in this manual.
2. This product complies with the EU RoHS 2.0 Directive 2011/65/EU and its amendments, restricting the use of hazardous substances.

Disclaimer

If the product malfunctions or is damaged or you and/or any third party is damaged due to your improper use of the product in violation of the requirements of this instruction, you agree that LLVISION shall not be liable for any such malfunction, damage or injury, except as otherwise provided by applicable law.

Warranty Information

This warranty service only applies to the first purchaser of the product. The warranty period for the glasses body and the charging case of the smart glasses is 12 months, and the warranty period for the glasses-related accessories (prescription lenses and sunglasses lenses) is 30 days.

During the user's use, the following situations are not covered by the warranty:

1. The warranty period for the purchased product has expired.
2. Equipment damage caused by product dropping.
3. Unauthorized disassembly, repair, modification and other man-made causes of failure.
4. Product damage caused by accidental factors or human behavior. For example: liquid ingress, drop damage, input of inappropriate voltage, excessive extrusion, deformation of the main board, obvious hard object damage, cracks, broken pins, serious deformation, damage to the power cord, broken wires, bare cores, etc.
5. It is normal for the color of the nose pads of glasses to change after long-term use.
6. The surface of the display lens may be slightly worn due to repeated wiping, and surface wear is not covered by the warranty.
7. Malfunctions or damages caused by force majeure (such as fire, earthquake, flood, etc.).
8. The product serial number, accessory date number, waterproof label or warranty seal has been removed, erased, defaced, modified or is illegible.
9. Wear and tear on the product caused by normal use.

To protect your legal rights and interests, please note the following:

1. When purchasing, the sales unit must issue a valid purchase certificate.
2. The purchase vouchers should be properly kept by the user. No replacement will be provided if lost.
3. During the warranty period, if the product fails due to non-human reasons, the user can contact the local dealer's customer service with the purchase certificate.

FCC Statement

1. This device complies with Part 15 of the FCC Rules. Operation is subject to the following two conditions:

(1) This device may not cause harmful interference.

(2) This device must accept any interference received, including interference that may cause undesired operation.

2. Changes or modifications not expressly approved by the party responsible for compliance could void the user's authority to operate the equipment.

NOTE:

This equipment has been tested and found to comply with the limits for a Class B digital device, pursuant to Part 15 of the FCC Rules.

These limits are designed to provide reasonable protection against harmful interference in a residential installation.

This equipment generates uses and can radiate radio frequency energy and, if not installed and used in accordance with the instructions, may cause harmful interference to radio communications. However, there is no guarantee that interference will not occur in a particular installation. If this equipment does cause harmful interference to radio or television reception, which can be determined by turning the equipment off and on, the user is encouraged to try to correct the interference by one or more of the following measures:

Reorient or relocate the receiving antenna.

Increase the separation between the equipment and receiver.

Connect the equipment into an outlet on a circuit different from that to which the receiver is connected.

Consult the dealer or an experienced radio/TV technician for help.

SAR Information Statement

Your wireless device is a radio transmitter and receiver. It is designed and manufactured not to exceed the emission limits for exposure to radiofrequency (RF) energy set by the Federal Communications Commission of the U.S. Government. These limits are part of comprehensive guidelines and establish permitted levels of RF energy for the general population. The guidelines are based on standards that were developed by independent scientific organizations through periodic and thorough evaluation of scientific studies. The standards include a substantial safety margin designed to assure the safety of all persons, regardless of age and health. The exposure standard for wireless mobile phones employs a unit of measurement known as the Specific Absorption Rate, or SAR. The SAR limit set by the FCC is 1.6 W/kg. * Tests for SAR are conducted with the phone transmitting at its highest certified power level in all tested frequency bands. Although the SAR is determined at the highest certified power level, the actual SAR level of the phone while operating can be well below the maximum value. This is because the phone is designed to operate at multiple power levels so as to use only the power required to reach the network. In general, the closer you are to a wireless base station antenna, the lower the power output. Before a phone model is available for sale to the public, it must be tested and certified to the FCC that it does not exceed the limit established by the government adopted requirement for safe exposure. The tests are performed in positions and locations (e.g., at the ear and worn on the body) as required by the FCC for each model. The highest SAR value for this model when tested at the head is [1.023W/Kg](#). The maximum scaled SAR Extremity is [0.797W/Kg](#).

While there may be differences between the SAR levels of various phones and at various positions, they all meet the government requirement for safe exposure. The FCC has granted an Equipment Authorization for this model phone with all reported SAR levels evaluated as in compliance with the FCC RFexposure guidelines. SAR information on this model phone is on file with the FCC and can be found under the Display Grant section of <http://www.fcc.gov/oet/fccid> after searching on FCC ID: [2AKLNG36A0](#) Additional information on Specific Absorption Rates (SAR) can be found on the Cellular Telecommunications Industry Association (CTIA) web-site at <http://www.wow-com.com>. * In the United States and Canada, the SAR limit for mobile phones used by the public is 1.6 watts/kg (W/kg) averaged over one gram of tissue. The standard incorporates a substantial margin of safety to give additional protection for the public and to account for any variations in measurements.

Body-worn Operation

This device was tested for typical body-worn operations. To comply with RF exposure requirements, a minimum separation distance of 10mm must be maintained between the user's body and the handset, including the antenna. Third-party belt-clips, holsters, and similar accessories used by this device should not contain any metallic components. Body-worn accessories that do not meet these requirements may not comply with RF exposure requirements and should be avoided. Use only the supplied or an approved antenna.