

# MacDonald Humfrey's Hand held HF Tag Reader



MacDonald Humfrey's Hand held HF Tag Reader



Ergonomic  
Design



Simple  
Status  
Indication



Single  
button  
Operation

# RFID Scanner Connection to PC via USB 2.0



# RFID Scanner – Housing





# RFID Scanner – LED Status Indication



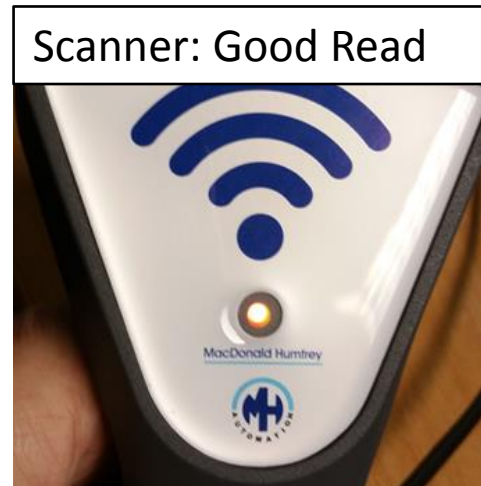
To read a tag, with the scanner in Idle mode, hold the scanner head parallel to the RFID Tag and press the orange trigger button.



Powering on LED flashing amber



LED Steady Green – Ready / Idle Mode

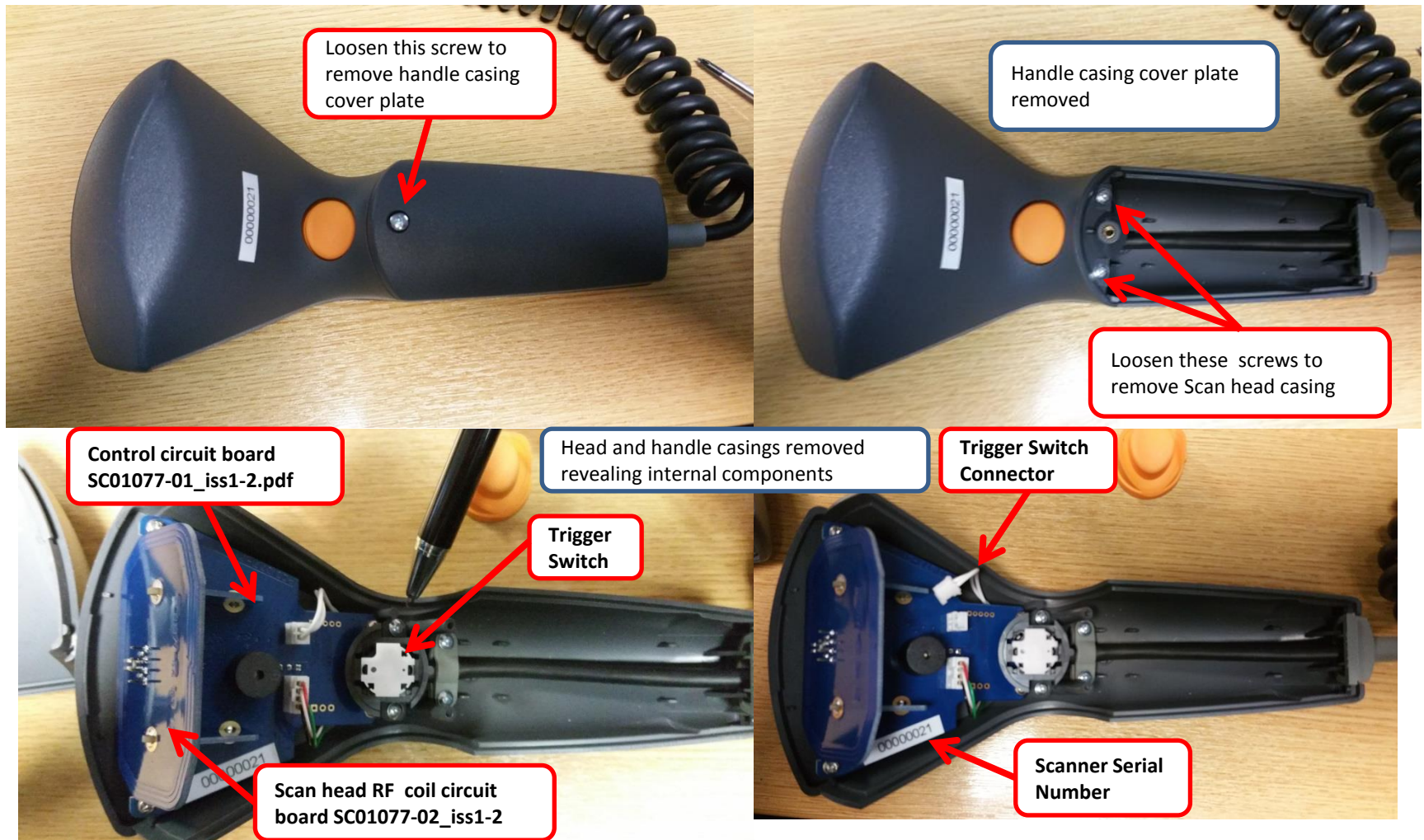


Good Read - LED indicates steady amber accompanied by a single long duration beep



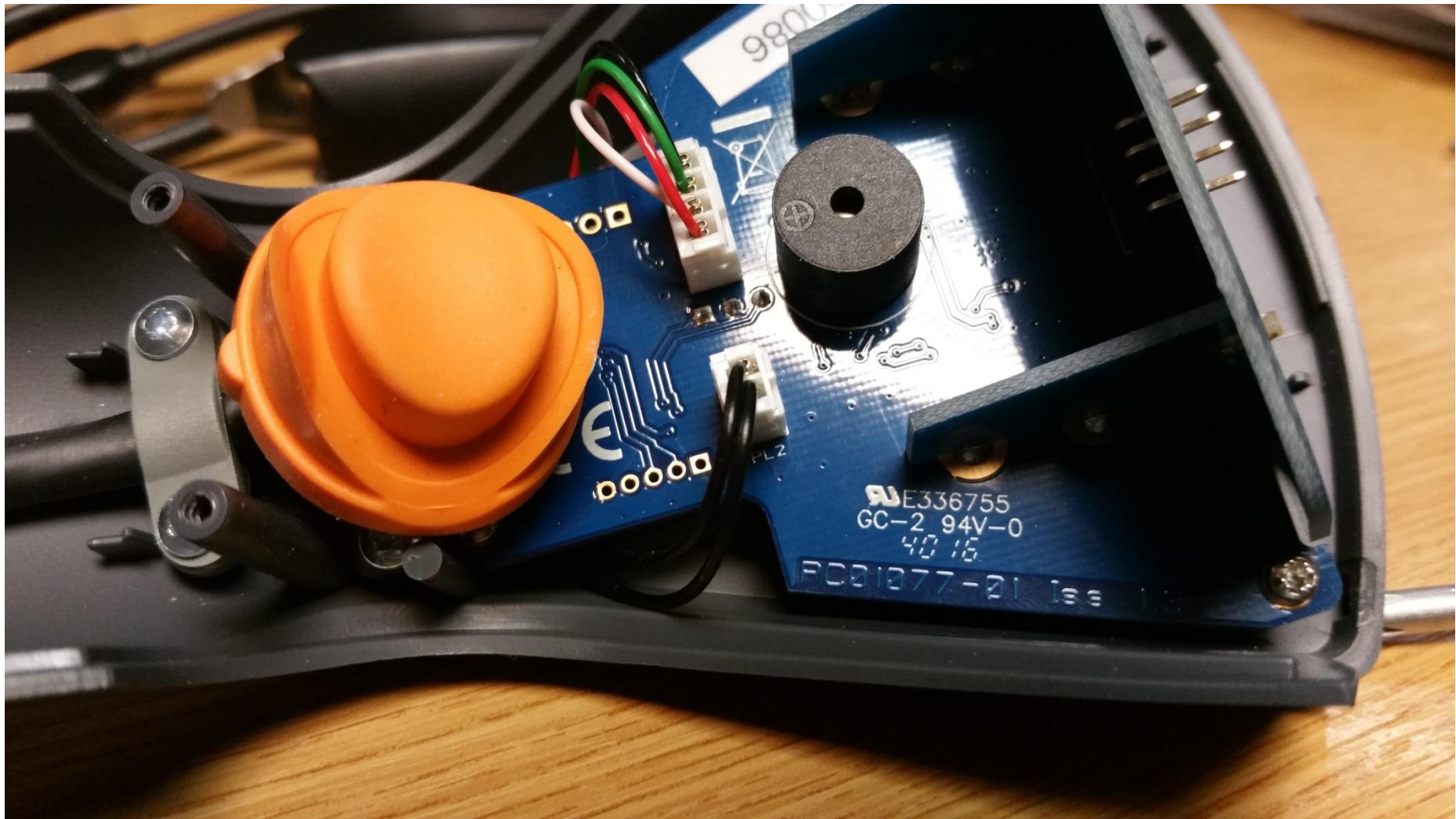
No Tag Read - LED indication flashes red accompanied by a multiple short duration beeps

# RFID Hand Scanner – Access to internal components





# HF RFID Scanner Main Circuit Board SC01077-01\_iss1-2



# HF RFID Scanner Circuit Board (SC01077-02\_iss1-2)

